

ACCOLADE

2025 SUPER CLASS C DIESEL MOTORHOME



2025 ENTEGRA COACH ACCOLADE


ENTEGR A
COACH



INTERIOR DÉCOR

Brookside

Wood	Furniture	Valance	Flooring	Countertop

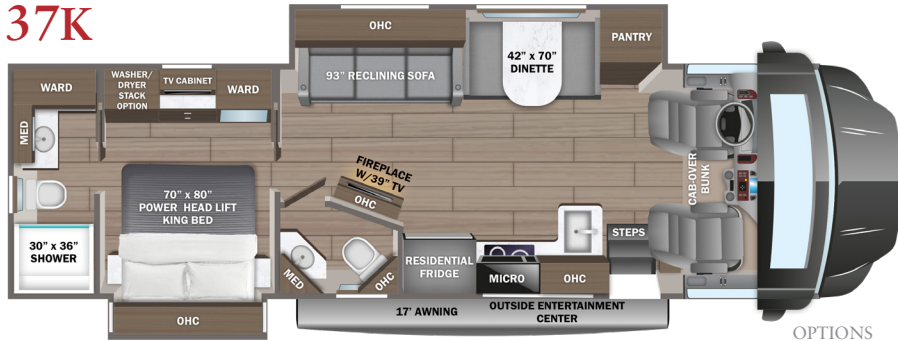
Modern Farmhouse

Wood	Furniture	Valance	Flooring	Countertop

2025 ACCOLADE

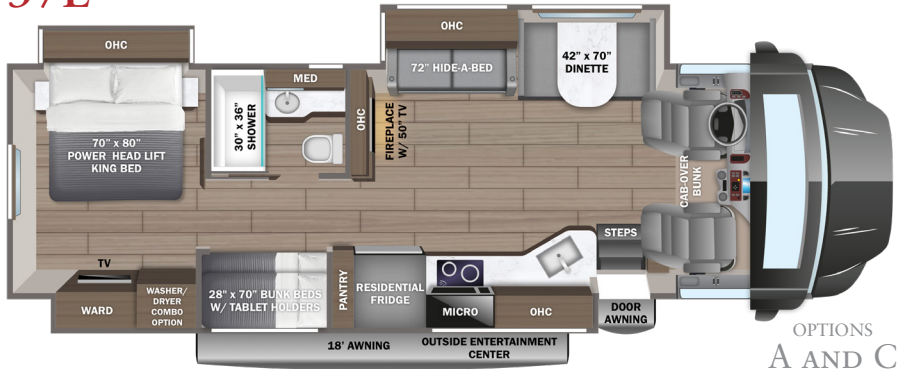
Super Class C Motorhome

37K



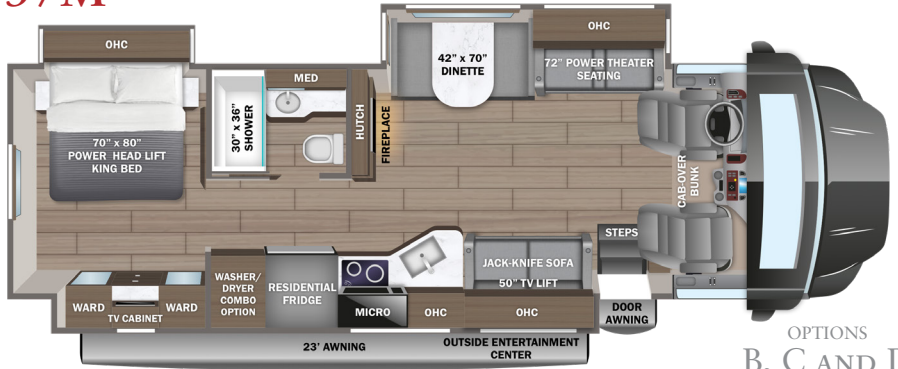
OPTIONS
B AND C

37L



OPTIONS
A AND C

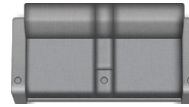
37M



OPTIONS
B, C AND D

OPTIONS

A



72-inch Power Theater Seating

B



Freestanding Dinette

C



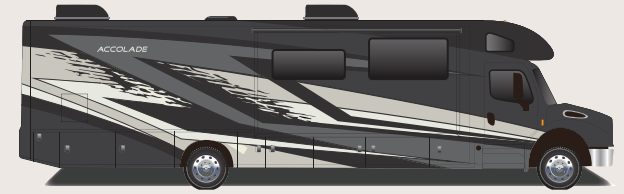
15 cu. ft. Fridge

D

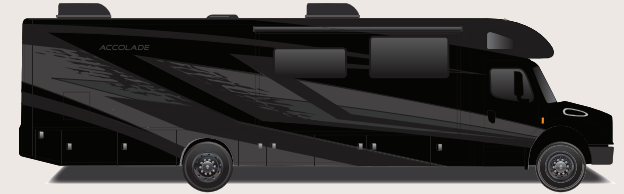


72-inch Hide-a-Bed Sofa

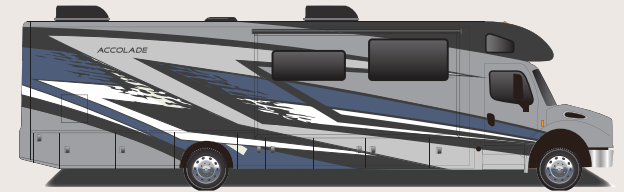
PAINT SELECTIONS



Fieldstone Full-Body Paint



Midnight Moon Full-Body Paint



Riverbank Full-Body Paint



Silver Leaf Full-Body Paint



Sundial Full-Body Paint



Touchstone Full-Body Paint

CUSTOMER VALUE PACKAGE

E-Z Drive™ Premier: Computer-balanced driveshaft, rear air suspension, heavy-duty rear stabilizer bar, full air brakes, SACHS shocks
 One-piece, seamless fiberglass front and rear caps
 Automotive-bonded panoramic window in front cap with power shade
 Lippert™ 4000 series dual-pane frameless bonded windows
 (2) 15,000 BTU A/C units with heat pump on main A/C
 Electric patio awning with LED lights
 2,000W pure sine wave inverter
 Power cord reel with 50-amp service
 Sony® infotainment center with tilt/swivel, Apple® CarPlay and Android Auto™
 Backup and side-view cameras
 Residential refrigerator
 Residential-size convection microwave

STANDARD CHASSIS EQUIPMENT

Freightliner® S2RV Plus chassis
 GVWR - 31,000 lb.
 GCWR - 43,000 lb.
 Cummins® ISB 6.7L 360 HP diesel engine with 800 ft.-lb. torque
 Allison® 3000 MH automatic transmission
 185-amp alternator
 G-rated highway tires - 275/80R22.5
 Alcoa® aluminum rims
 Engine exhaust brake
 12,000 lb. hitch with 1,200 lb. tongue capacity
 7-pin plug
 Dual 12V chassis batteries
 100 gal. fuel tank
 10 gal. DEF tank

STANDARD EXTERIOR EQUIPMENT

TuffShell™ vacuum-bond laminated roof, floor and sidewalls
 Bead-foam insulation (R-24 max roof, R-9 max floor, R-8 max walls)
 One-piece, seamless, crowned fiberglass roof
 Premium Sikkens full-body paint
 Automatic hydraulic leveling jacks
 Entrance door with industry's largest travel-view window
 Electric-powered entrance steps
 Slideout cover awnings
 Exterior entertainment center with outside speakers and LED HD
 Smart TV mounted on swivel bracket
 Winegard® In-motion satellite dish
 Carpeted, full pass-through storage compartments with Keyed Alike lockable slam-latch doors
 Thetford® Sani-Con Turbo macerator system

Third brake light
 Roof ladder
 Cable TV hookup with RG-6 coax and video selector switch
 Winegard 2.0 Wi-Fi/4G antenna
 8,000W diesel generator with auto-gen start
 200W solar panel with dual controller
 (4) 6V AGM (220Ah) house batteries on slideout tray
 Transfer switch with reverse polarity protection
 24.5 gal. propane tank (83 lb.)
 LP quick-connect hookup
 Exterior utility center
 Winterization drain system
 Black tank flush
 Outside shower
 12V demand water pump
 Water filtration system

STANDARD COCKPIT EQUIPMENT

6-way power driver and passenger seats
 Deluxe heated, remote-controlled, side-view mirrors
 Tilt steering wheel
 Cruise control
 Detroit automatic wipers/headlights
 Power windows and door locks
 Auxiliary start switch
 Privacy curtains for cab area

STANDARD INTERIOR EQUIPMENT

Custom-molded ABS surround in cab-over area
 Overhead bunk with 750 lb. capacity
 Firefly Multiplex system - wall-mounted touchscreen and mobile app for total coach control
 84 in. interior ceiling height with padded vinyl ceiling
 Integrated day/night cassette shades
 High-intensity recessed LED ceiling lights
 LED-lit fascia
 Vinyl plank flooring
 Hardwood cabinet doors and drawer fronts
 Deluxe hidden cabinet hinges
 Ball-bearing drawer guides
 30,000 BTU auto-ignition furnace
 10 gal. gas/electric water heater
 Electric fireplace
 Entegra-exclusive, easy-operation legless dinette table
 2-point lap safety belts in all designated seating locations
 Car seat tethers (select floorplans)
 LED HD Smart TV in living area
 JBL® audio system
 Smoke alarm
 Carbon monoxide detector
 Fire extinguisher

Wood-framed kitchen window with spice cabinets
 2-burner induction cooktop
 LED-lit, solid-surface kitchen countertops with recessed stainless steel sink and sink covers
 Walk-around, king-size bed with power head lift, bedspread and nightstands
 USB port and wireless charging in nightstands
 Under-bed storage (select models)
 LED HD Smart TV in bedroom
 Large wardrobes
 Bunks with industry-exclusive 300 lb. capacity each (37L)
 Wall-mounted tablet holder in each bunk (37L)
 Shower with decorative surround, glass door, skylight and light
 Porcelain toilet with foot flush
 Recessed stainless-steel bathroom sink
 Powered roof vent in bathroom with wall switch

OPTIONS

Power theater seating (37L) (STD on 37M)
 Hide-a-bed sofa ILO theater seating (37M)
 Freestanding table with 4 chairs (37K, 37M)
 15 cu. ft. 12V refrigerator
 Combination washer/dryer (37L, 37M)
 Stackable washer/dryer (37K)
 Starlink satellite internet system with KING Jack™ antenna IPO
 Winegard Connect 2.0
 Canadian Shaw® TRAV'LER® satellite dish
 Winegard® TRAV'LER® satellite dish - DIRECTV®
 Slide-out tray with 12V refrigerator cooler in basement
 Blackout package – includes black bumper, grille, mirrors and wheels (available with any exterior)



NO ONE OFFERS A BETTER WARRANTY

At Entegra Coach, we build our RVs to handle every adventure, then back them with our industry-leading 2+3 limited warranty. Our 2-year limited warranty has you covered for 2 camping seasons. That's 730 days. In addition, our 3-year structural limited warranty has you covered for 3 camping seasons or 1,095 days. You won't find a better limited warranty in the business, because the only strings we attach are those that deliver the ultimate in reliability. For a copy of our 2-year limited + 3-year structural limited warranty with complete terms and conditions, please contact your local Entegra Coach dealer.

Floorplan	GVWR (lbs.)	GCWR (lbs.)	Wheel Base	Overall Length	Exterior Height w/ A/C & Satellite	Exterior Width	Interior Height	Fresh Water Capacity (gal.)	Grey Waste Water Capacity (gal.)	Black Waste Water Capacity (gal.)
37K	31,000	43,000	279	39' 4"	13' 4"	101	84	72	51/40	40/23
37L	31,000	43,000	279	39' 4"	13' 4"	101	84	72	50/31	50
37M	31,000	43,000	279	39' 4"	13' 4"	101	84	72	40/40	33/23

It is important for your safety and enjoyment that you are aware of the weights and tow ratings of the RV you select. Consult a competent advisor for questions or advice. Whether you are new to RVing or a veteran, get a feel for the performance of your RV before heading out on the roadways. When you tow a vehicle with your RV, you must drive differently than when you drive a single vehicle. Practice hooking up, driving, backing up and braking in a safe environment or seek out professional instruction. Jayco affixes a weight label to each RV which lists weight information for that vehicle. Refer to that label to verify the vehicle will meet your requirements. Gross Vehicle Weight Rating (GVWR): The maximum permissible weight of the motorhome, including the Unloaded Vehicle Weight (UVW) plus passengers, personal items, all cargo, fluids, options and dealer-installed accessories. The GVWR is equal to or greater than the sum of the UVW and the Cargo Carrying Capacity. Gross Combined Weight Rating (GCWR): The maximum allowable combined weight of the motorhome used as a tow vehicle and the attached towed vehicle.



Part of Jayco Family of Companies

Entegra Coach, Inc., P.O. Box 460, Middlebury, IN 46540, www.entegracoach.com. See dealer for further information and prices. All information in this brochure is the latest available at the time of publication approval. Entegra Coach reserves the right to make changes and to discontinue models without notice or obligation. Photos in this brochure may show optional equipment and props for photography purposes. RVs built for sale in Canada may differ to conform to Canadian codes. ©2025 Entegra Coach, Inc. Printed in U.S.A. 2032944



entegracoach.com/accolade

LEGACY ISN'T LEFT,
IT'S LIVED.