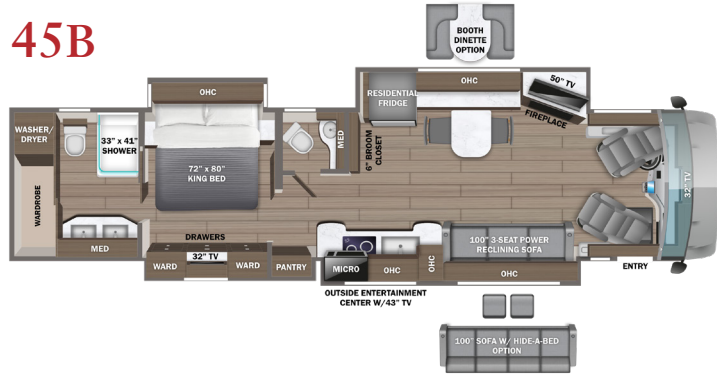


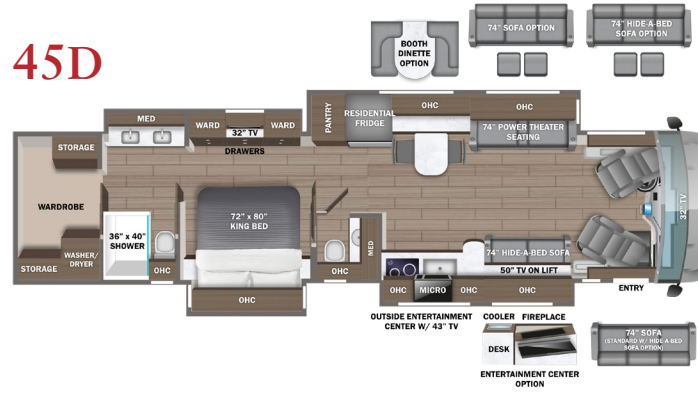
2025 CORNERSTONE

Luxury Diesel Motorhome

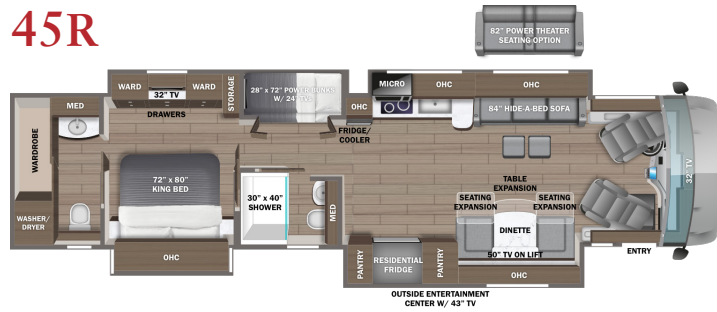
45B



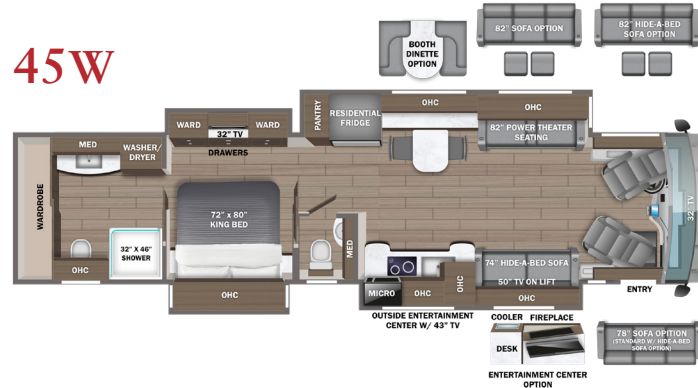
45D



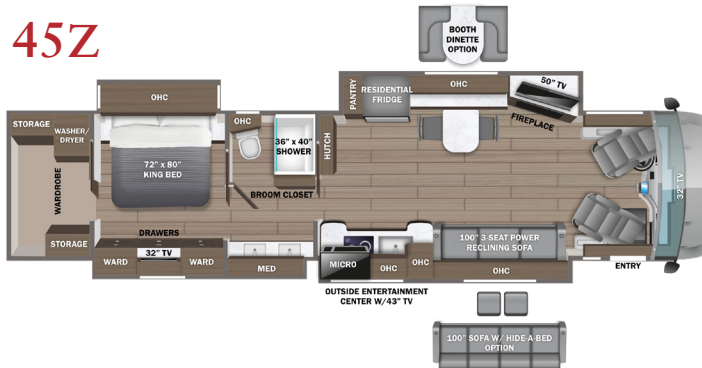
45R



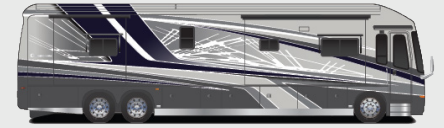
45W



45Z



PAINT SELECTIONS



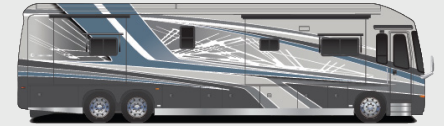
Agate Grey



Black Pearl



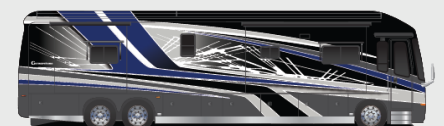
Carmine Red



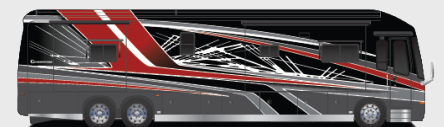
Coral Reef



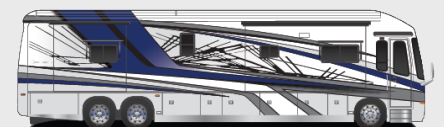
Golden Sand



Patriot Blue



Red Horizon



Silky Blue

CHASSIS

Spartan® K3 raised-rail chassis
 Cummins® 15 liter X15 turbocharged 605 HP engine with 1,950 lb. ft. torque at 1,150 RPM
 Allison® 4,000 MH 6-speed transmission
 Side-mounted, parallel-airflow radiator
 210 amp alternator
 1,500W engine block heater
 Three-stage engine brake
 Collision avoidance system with collision warning, adaptive cruise control and electronic stability control
 Meritor® front axle with independent front suspension, integrated anti-sway bar and custom-tuned Koni® shocks - 20,000 lb. rating
 Dana® rear axle - 20,000 lb. rating
 Reyco® Granning® passive-steer tag axle with onee-touch manual air dump - 14,000 lb. rating
 All-wheel ABS disc brakes
 4.30 rear axle ratio
 Michelin® 365/70R 22.5 in. tires (front) and 315/80R 22.5 in. tires (rear)
 Tire pressure monitoring system (TPMS) with temperature monitoring
 Automatic traction control
 Equalizer™ hydraulic automatic coach leveling
 Valid™ Truline air leveling system with auxiliary air compressor
 Remote air connection
 (2) 12V chassis batteries
 175 gal. fuel tank with dual fills
 15 gal. DEF tank with dual fills
 Spartan® Safehaul tow vehicle air brake system
 20,000 lb. hitch with 7-pin plug

CONSTRUCTION

Roof: 4 in. arched aluminum trusses filled with batt insulation and reflective Flexfoil® topped with ¾ in. plywood decking then one-piece fiberglass
 Sidewalls: 2-½ in. exterior walls with Alumina-Tru™ welded tubular aluminum studs on 16 in. centers or less, filled with batt and Flexfoil® insulation, then covered with high-gloss gelcoat fiberglass (R-16)
 Floors: 2 in. x 4 in. wood trusses on 16 in. centers or less filled with batt and Flexfoil® insulation then topped with ¾ in. 7-ply plywood decking (R-33)
 X-Bridge™ bracing welded into chassis frame
 Aqua-Hot® heated basement storage
 Insulated front and rear caps (R-24)
 Entegra-exclusive Relia-Torque flush-mounted 12V slideout system

HEAT, A/C, WATER, AND POWER

Onan® 12,500W diesel generator, with automatic start, on powered slide-out tray
 Victron 3,000W pure sine wave inverter with LED screen
 (4) L16 AGM batteries (6V/390 amp hrs. ea.)
 (2) 200W solar panels
 50 amp power cord on electric powered reel
 Smart automatic transfer switch with surge protection
 Bergstrom dual-zone HVAC system
 (3) 15,000 BTU A/C units with heat pumps and condensation drain system

Aqua-Hot® 600D hydronic water and heating system with in-floor heat throughout and engine preheat
 LED-lit fireplace with 5,000 BTU heating element (45B, 45Z)
 Sani-Con® macerator holding tank dump system with power gate valves and manual backup
 Heated exterior utility center with 5 in. LED Firefly® tank monitoring panel
 Black tank flush
 Grey tank flush
 Tilt tank dump
 City and tank water filtration system
 Hot and cold water hook-up in front cap area with 30 ft. quick-disconnect hose
 Water softener prep in driver-side compartment
 Water hose with electric reel

EXTERIOR

Executive Bus Armor 10 in stainless steel trim
 Power rear engine door with manual override
 Dual roof-mounted Girard® Vision dual-pitched patio awnings with LED lights
 Girard® power entrance door awning with LED lights
 Girard® Ultra slideout awnings
 Girard® Ultra power window awnings
 Frameless, dual-pane, tinted, safety-glass windows
 Lit grab handle with doorbell and keypad system for keyless entry
 43 in. Samsung® QLED 4K UHD Smart TV with tilt, swivel, and extend adjustment
 JBL® radio and speakers with USB port and receptacle
 Blind-spot monitoring indicators in chrome, heated, remote-control side-view mirrors
 Diamond Shield™ front protective film mask
 Automatic LED high and low beam headlights
 Halogen fog lights
 Automatic daytime running lights
 LED marker lights, turn lights, license plate light, third brake light, accent lights and docking lights
 LED accent lights under all slideout rooms
 LED-lit chrome clearance accent light
 Porch light and motion sensor security lights
 Mudflap with chrome "Entegra Coach" nameplate
 Starlink satellite internet system
 Winegard® TRAV'LER satellite dish DIRECTV® - standard with USA option
 Winegard® TRAV'LER Pro satellite dish Shaw TV - standard with CSA option
 Winegard® Rayzar Automatic powered TV antenna
 Winegard® WiFiRanger™ Wi-Fi extender
 (2) power slideout basement storage trays
 2.8 cu. ft. exterior refrigerator/freezer on slideout tray
 Push-button, power-unlatching baggage doors with LED indicator light
 Sikkens custom full-body paint

COCKPIT

Valid™ 15 in. digital dash with quad core graphics processor, on-board diagnostics and ability to display traditional instrument cluster, 360° camera system or GPS navigation
 Delta Mobile Systems® aiDARS™ 1X active 360° surround view system with 14 smart radar sensors and 6 HD cameras displayed on digital dash screen

Valid™ infotainment system with 15 in. touchscreen, Sygic navigation, Bluetooth®, Sirius XM™ and AM/FM tuner, integrated camera control, house mode whole-coach audio distribution and integrated Vega Touch coach control
 4.3 in. infotainment control touchscreen in passenger console
 E-Z Steer™ adjustable power steering assist
 Leather steering wheel with integrated controls for screen selection, instrument cluster navigation, media source selection, cruise, wipers and Bluetooth® phone functionality
 Power tilt and telescoping steering column
 JBL® premium audio 11-speaker sound system with amplifier, speakers and DVC subwoofer
 All-in-one automotive antenna for AM/FM/Sirius/GPS dash radio system
 Ultra-Vision® one-piece wrap-around tinted windshield
 Rain-sensing windshield wipers
 32 in. Samsung® QLED 4K UHD Smart TV in front overhead
 Heated and cooled leather driver and passenger seats with powered 6-way adjustment, lumbar, recline, footrest and massage functions
 Powered driver's window
 Powered flush stepwell cover
 Powered adjustable brake and accelerator pedals
 Powered front sun visors and privacy shades
 Dual USB port and one 12V socket for charging

INTERIOR

Firefly multiplex system with 10 in. Vega Touch touchscreen for complete integration of coach controls, with remote monitoring and control (mobile app available)
 Spyder 3.5 in. touchscreen switches throughout
 50 in. Samsung® QLED 4K UHD Smart TV
 Bose® sound bar with subwoofer and universal remote control
 Sony® Blu-ray™ player
 Premium leather Crown Compass furniture
 Hand-laid porcelain tiled floors
 LED interior lighting
 Decorative ceiling feature with integrated accent lighting
 Powered solar day and blackout night shades
 Portable Shark® vacuum cleaner
 Aire-Secure™ travel locks for all pocket doors
 Removable screen on entry door
 Bar area with beverage chiller and rain glass upper cabinet door with LED accent lighting (45R only)
 Carbon monoxide detector
 Smoke alarm

KITCHEN

Window with push out lever operation and screen
 Stainless steel residential refrigerator
 Induction cooktop with matching wood cover
 1.9 cu. ft. convection microwave oven
 Fisher & Paykel dishwasher
 Solid-surface countertops with Blanco single-bowl granite sink and dimmable LED accent lighting
 Filtered water dispenser at kitchen sink

Maxxair® power vent exhaust fan with intake and touch screen control
 Large, deep drawer for waste basket with easy access trash chute (trash chute not available in 45D, 45R)
 Pantry with pull-out shelves
 Slide-out storage tray(s) in overhead cabinet

BEDROOM

Personal Comfort® A5 king-size mattress
 32 in. Samsung® LED 4K UHD Smart TV
 Bose® sound bar with universal remote control
 Sony® Blu-ray™ player
 Ceiling fan
 Nightstands with solid-surface tops
 Automatic light in rear closet
 Bunks with industry-exclusive 300 lb. capacity each (45R)
 Storage safe

BATHROOM

Solid-surface countertops with integrated glass sink and dimmable LED accent lighting
 Porcelain tile shower walls and floor with skylight spray wand
 Aqua View SHOWERMISER™ water saving system
 Thetford® macerator toilet in main bath
 Thetford® macerator toilet in mid bath (45D, 45R, 45W)
 Thetford® Aria china toilet in mid bath (45B)
 Maxxair® Deluxe power exhaust vent fan with intake
 Splendide stackable washer and dryer

OPTIONS

Freightliner SL chassis ILO Spartan K3 chassis
 Theater seating with power recliners and fixed center console (45R)
 100 in. hide-a-bed sofa ILO 100™ power reclining 3-cushion sofa (45B, 45Z)
 Hide-a-bed sofa and standard sofa ILO power theater seating and hide-a-bed sofa (45D, 45W)
 Dinette booth ILO free-standing table and chairs (45B, 45D, 45W, 45Z)
 Fireplace/TV/entertainment center and work station IPO sofa (45D, 45W)
 Living Room and Bathroom Area Rugs
 Cabinet with two drawers ILO dishwasher
 Wood headboard
 Sleepmade memory foam mattress
 Winegard® in-motion satellite dome ILO
 Winegard® TRAV'LER
 Winegard® TRAV'LER satellite dish Dish Network® ILO DIRECTV®
 Canadian standards (CSA)



It is important for your safety and enjoyment that you are aware of the weights and tow ratings of the RV you select. Consult a competent advisor for questions or advice. Whether you are new to RVing or a veteran, get a feel for the performance of your RV before heading out on the roadways. When you tow a vehicle with your RV, you must drive differently than when you drive a single vehicle. Practice hooking up, driving, backing up and braking in a safe environment or seek out professional instruction. Jayco affixes a weight label to each RV which lists weight information for that vehicle. Refer to that label to verify the vehicle will meet your requirements. Gross Vehicle Weight Rating (GVWR): The maximum permissible weight of the motorhome, including the Unloaded Vehicle Weight (UVW) plus passengers, personal items, all cargo, fluids, options and dealer-installed accessories. The GVWR is equal to or greater than the sum of the UVW and the Cargo Carrying Capacity. Gross Combined Weight Rating (GCWR): The maximum allowable combined weight of the motorhome used as a tow vehicle and the attached towed vehicle.

| Floorplan | GVWR (lbs.) | GCWR (lbs.) | Front GAWR (lbs.) | Rear GAWR (lbs.) | Tag GAWR (lbs.) | Wheel Base | Overall Length | Exterior Height w/ A/C & Satellite | Exterior Width | Interior Height | Fresh Water Capacity (gal.) | Grey Waste Water Capacity (gal.) | Black Waste Water Capacity (gal.) |
|-----------|-------------|-------------|-------------------|------------------|-----------------|------------|----------------|------------------------------------|----------------|-----------------|-----------------------------|----------------------------------|-----------------------------------|
| ALL | 54,000 | 74,000 | 20,000 | 20,000 | 14,000 | 320" | 44' 11" | 12' 11" | 101" | 84" | 100 | 62 | 41 |



Entegra Coach, Inc., P.O. Box 460, Middlebury, IN 46540, www.entegracoach.com. See dealer for further information and prices. All information in this brochure is the latest available at the time of publication approval. Entegra Coach reserves the right to make changes and to discontinue models without notice or obligation. Photos in this brochure may show optional equipment and props for photography purposes. RVs built for sale in Canada may differ to conform to Canadian codes. ©2024 Entegra Coach, Inc. Printed in U.S.A. 2032922



entegracoach.com/cornerstone

A LEGACY OF LUXURY