

# **CRUISER** **&** **CRUISER** **AIRE**

**TRAVEL TRAILERS & 5<sup>TH</sup> WHEELS**



**CROSSROADS**<sup>™</sup>  
*Recreational Vehicles*

**32BH Front to Back**



**Kitchen**



**Modern Style Sink**



**Bedroom**



**32BH Back to Front**

# STANDARDS & OPTIONS

## STANDARDS EXTERIOR

- On Demand Gas Water Heater
- Laminated Sidewalls, Slide Ends, Rear Wall
- Solar Prep (Roof & Front Unit)
- Aerodynamic Front Cap
- Heated Tank Pads: On 45° - Off 67°
- 30" Friction Hinge Entry Door
- Extendable Grab Handle Main Entry
- EZ Lube Axles
- Nitrogen Filled Radial Tires
- Galvanized Wheel Well
- Outside Kitchen w/ Capitol Grill (VBM)
- Super-stor Pass Through Basement
- Magnetic Slam Latch Baggage Doors
- Exterior Marine Grade Speakers
- Roof Ladder
- 3/8" Roof Decking (Screw Secured)
- Fully Walkable Roof
- 5 Sided Aluminum Construction
- Elec. Rear Stabilizer Jacks
- Spring Loaded Pull Pins Front Jacks - FW
- Battery Disconnect Switch
- Tinted Safety Glass Windows
- Electric Front & Rear Stabilizer Jacks (TT)
- Turning Point 90° Pin Box (VBM)
- Winegard 360+ w/ WiFi Prep
- Hitch Receiver w/ 4 Pin Harness
- Awning Slide Topper

## STANDARD INTERIOR

- 70lb Full Extension Steel Ball Bearing Guides
- Solid Wood Drawer Construction
- Booth Dinette
- Decorative Back Splash
- Solid Surface Kitch. Countertops
- Stainless Steel Appliances
- Stainless Steel Kitchen Sink
- Tri-fold Hide a Bed Sofa
- Water Heater Bypass Kit
- EZ Winterization Kit
- 55 Amp Converter w/ Distribution Center
- 12-Volt Bath Power Vent
- Quick Drain - Fresh Tank
- Heated Pass Through Storage
- Hidden Cabinet Door Soft Close Cabinet Hinges
- Roller Shades
- 30" Residential Microwave (FW)
- 16 Ft<sup>3</sup> Refrigerator (FW)
- 10 Ft<sup>3</sup> Refrigerator (TT)
- Bath Skylight

- Built In Medicine Cabinet
- Porcelain Toilet w/ Foot Flush
- Under Bed Storage
- Plywood Bed Base w/ Strut Assist
- Spacious Bedroom Closets
- Fire Extinguisher
- 12 Volt Charging Station
- Spare Tire
- 5,100 BTU Fireplace (VBM)
- Docking Station
- HyperDeck™ Flooring
  - Water Resistant
  - Fiberglass Reinforced
  - Polypropylene Layers
- Flush Floor Slides

- Heated Tank Pads (12 Volt)

TT - Travel Trailers

FW - Fifth Wheels

\*VBM - Varies by Model

## OPTIONS

- 2nd A/C in Bedroom
- Free Standing Table & Chairs
- 4 Point Leveling (VBM)
- 6 Point Leveling (VBM)
- Theater Seats IPO Tri-Fold Sofa (VBM)
- 50 Amp Service (TT)

## SELECT PACKAGE MANDATORY

- Aluminum Wheels
- Black Tank Flush
- Power Awning w/ LED Lights
- Friction Hinge Entrance Doors
- LED Interior Lights
- 40" LED TV
- 50" LED TV
- Smoke Detector
- LP Detector
- Decorative Bedspread
- 30# LP Bottles (20# on TT)
- Backup Camera Prep
- Solar Prep - Side & Roof Mount
- Secure Stance Steps
- 50 Amp Service w/ 2<sup>nd</sup> A/C Prep - (Opt. TT)
- 15,000 BTU A/C (Opt. TT)
- WiFi Prep
- Oven with Glass Top
- King Bed

## "EXTREME WEATHER PACKAGE"

- Upgrade Insulation
- Heat Barrier - Reflective Foil
- Enclosed & Heated Underbelly
- Furnace - 30,000 BTU
- Heated Pass Through Storage - 5<sup>th</sup> Wheels

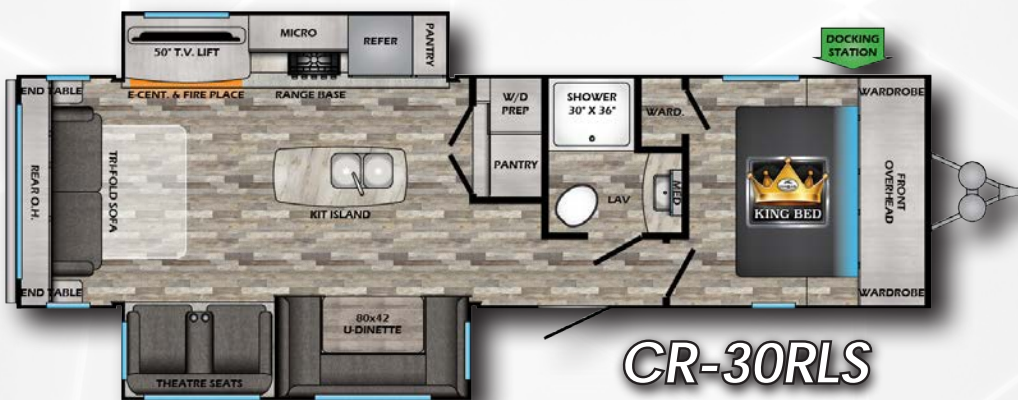
Travel Trailer  
Features



5th Wheel  
Features



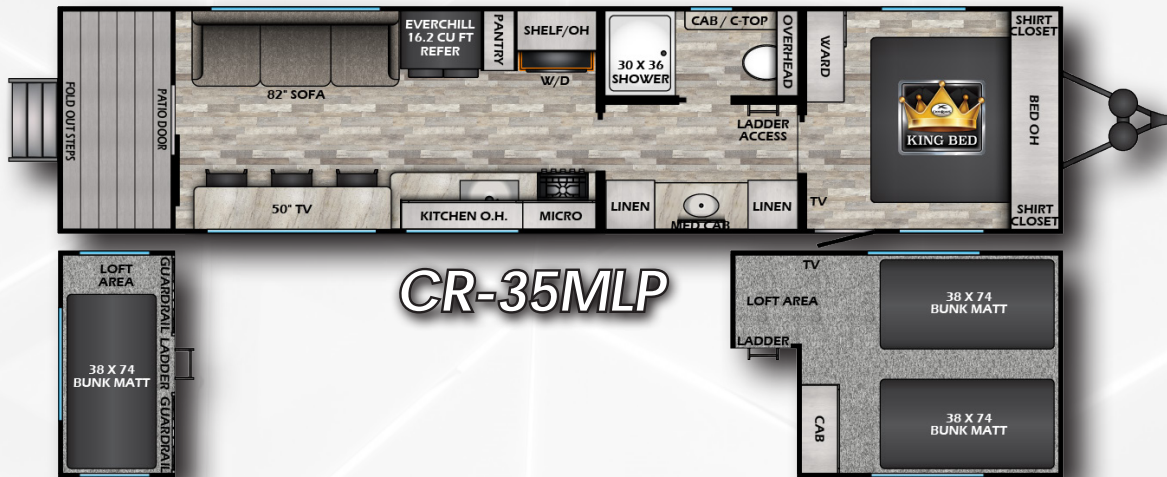
TRAVEL TRAILERS:



Floorplans



## TRAVEL TRAILERS:



Floorplans



MODEL	25MLP	27RBS	28BBH	30RLS	32FBS	34BHS	35MLP
DRY WEIGHT	7050	6405	6288	7192	TBD	TBD	TBD
HITCH	1110	846	896	830	TBD	TBD	TBD
LENGTH	29' 11"	32' 1"	32' 9"	34' 11"	TBD	37' 10"	TBD
EXT. HEIGHT + A/C	13' 6"	11' 4"	11' 4"	11' 4"	TBD	11' 6"	TBD
FRESH WATER	54 Gal	54 Gal	54 Gal	54 Gal	TBD	54 Gal	TBD
BLACK WATER	39 Gal	30 Gal	30 Gal	30 Gal	TBD	30 Gal	TBD
GRAY WATER	39 Gal	60 Gal	60 Gal	60 Gal	TBD	60 Gal	TBD

## 5<sup>th</sup> WHEELS:



**CR-26RK**



**CR-27BH**



**CR-30RD**



**CR-32BH**



**CR-31SI**



**CR-36BL**

Floorplans



## 5th WHEELS:



**CR-37LF**



**CR-37MD**

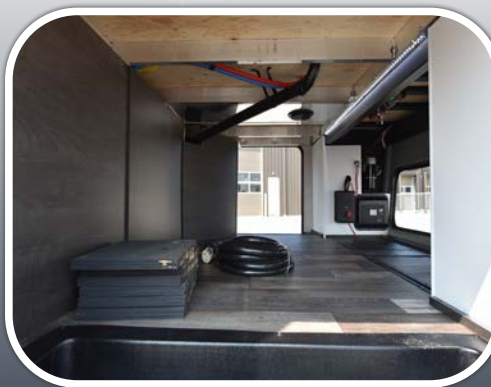
Floorplans



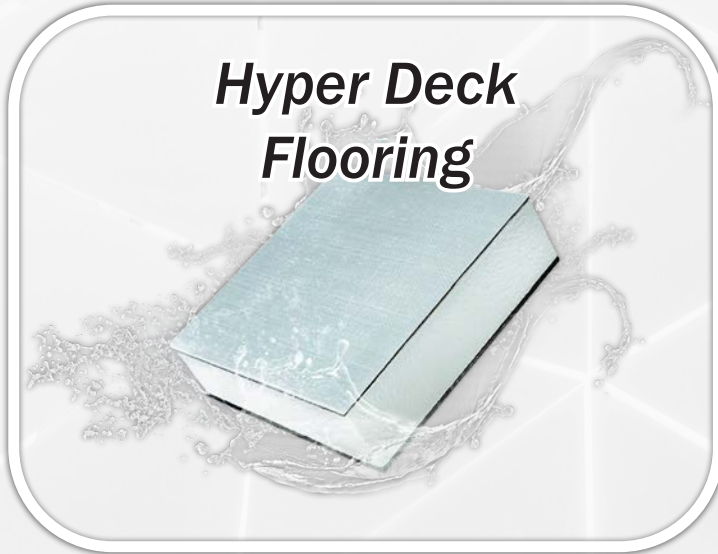
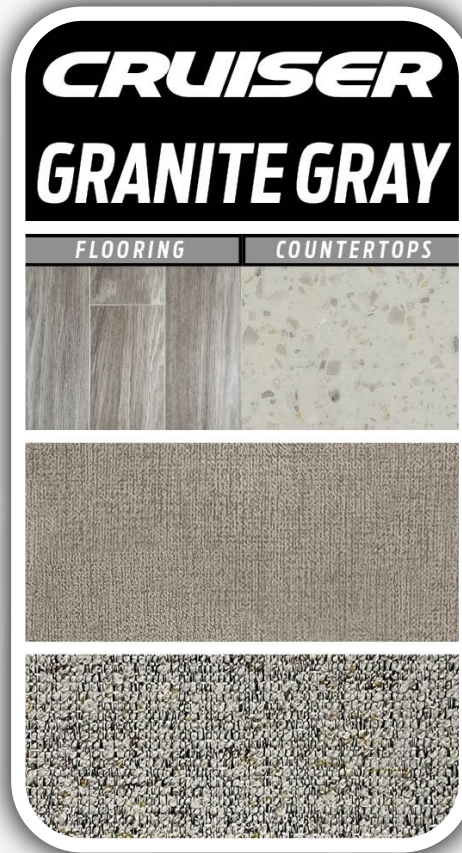
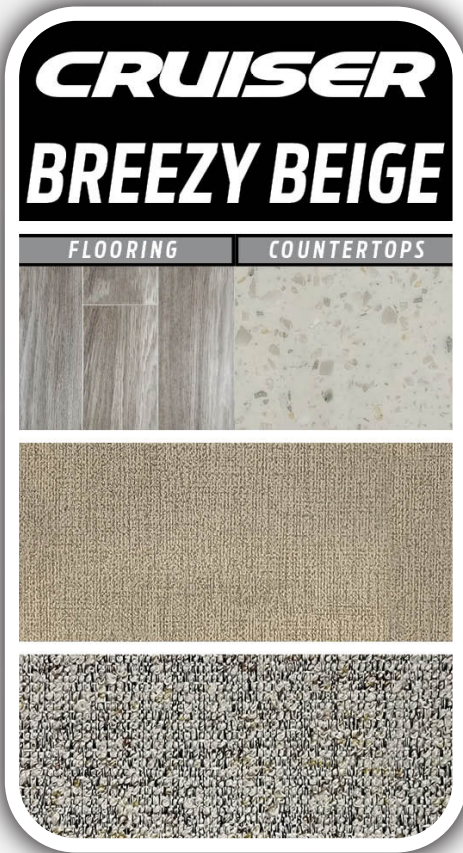
MODEL	26RK	27BH	30RD	31SI	32BH	36BL	37LF	37MD
DRY WEIGHT	TBD	TBD	9466	9278	10345	11098	TBD	11462
HITCH	TBD	TBD	1692	1622	2155	2178	TBD	2118
LENGTH	30' 4"	32' 1"	34' 4"	35' 0"	36' 2"	40' 11"	41' 8"	41' 8"
EXT. HEIGHT + A/C	12' 5"	12' 10"	13' 1"	13' 2"	13' 3"	13' 5"	13' 3"	13' 3"
FRESH WATER	60 Gal	60 Gal	54 Gal	60 Gal	54 Gal	54 Gal	54 Gal	54 Gal
BLACK WATER	39 Gal	39 Gal	39 Gal	39 Gal	78 Gal	78 Gal	78 Gal	78 Gal
GRAY WATER	78 Gal	78 Gal	78 Gal	78 Gal	78 Gal	78 Gal	78 Gal	78 Gal

## NEWLY DESIGNED 5TH WHEEL PASSTHROUGH

- 6" Taller
- Unobstructed
- 76 ft<sup>3</sup>
- Recessed Battery
- Recessed Inverter



# DECORS



**SCAN ME FOR MORE INFO!**



**OUR STANDARD  
IS LOADED**



[www.crossroadsrv.com](http://www.crossroadsrv.com) • 2164 Caragana Ct, Goshen, IN 46526 • (260) 593 - 3850

DISCLAIMER: Product information is as accurate as possible as of the date of publication of this brochure. All features, floor plans, and specifications in this brochure are subject to change without notice. Please also consult CrossRoads' web site at [www.crossroadsrv.com](http://www.crossroadsrv.com) for more current product information and specifications. Tow Vehicle Disclaimer. CAUTION: Owners of CrossRoads recreational vehicles are solely responsible for the selection and proper use of tow vehicles. All customers should consult with a motor vehicle manufacturer or their dealer concerning the purchase and use of suitable tow vehicles for CrossRoads products. CrossRoads disclaims any liability or damages suffered as a result of the selection, operation, use or misuse of a tow vehicle. CROSSROADS' LIMITED WARRANTY DOES NOT COVER DAMAGE TO THE RECREATIONAL VEHICLE OR THE TOW VEHICLE AS A RESULT OF THE SELECTION, OPERATION, USE OR MISUSE OF THE TOW VEHICLE. REFERENCE CROSSROADS RV COMPANY OWNERS MANUAL FOR LIMITED WARRANTY DETAILS. \*Length is defined as the distance from the centerline of hitch pin/coupler to rear bumper of trailer.