



CLASS C DIESEL

2025 VALENCIA

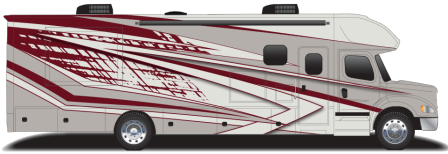
Version 2025.2 • Current as of 9/26/2024
All Features Are Subject To Change Without Notice Or Obligation

A NEW ERA IN MOTORHOME LUXURY

The 2025 Renegade RV Valencia is a Class C diesel that combines family-friendly features with stylish details to make living and traveling a pleasure. The Valencia's functional design creates a spacious and inviting interior. Every Valencia is built with high-quality maple cabinets that provide ample storage to accommodate your needs. The ultra-soft furniture, polished solid surface countertops and stainless steel appliances are just a few of the beautifully designed features you will find in this RV.

LENGTH	TOWING CAPACITY	BATHROOMS
36' 10"-38' 2"	12,000 lbs	1-1.5

EXTERIOR PAINT OPTIONS



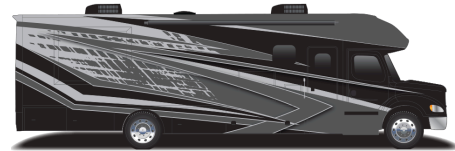
BRICKYARD



BURNOUT



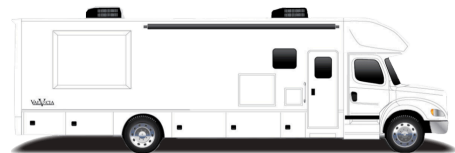
NITROUS



THROTTLE

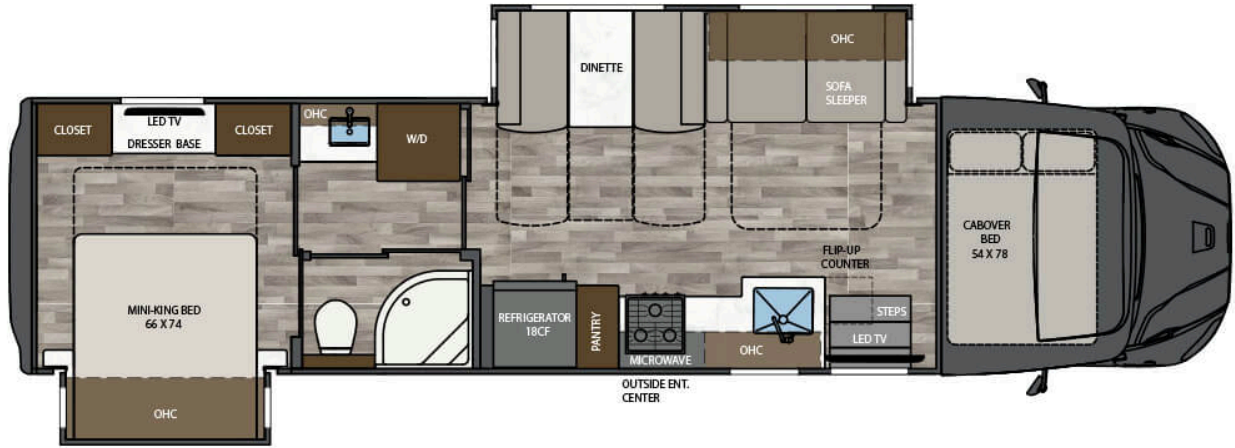


POLARIS

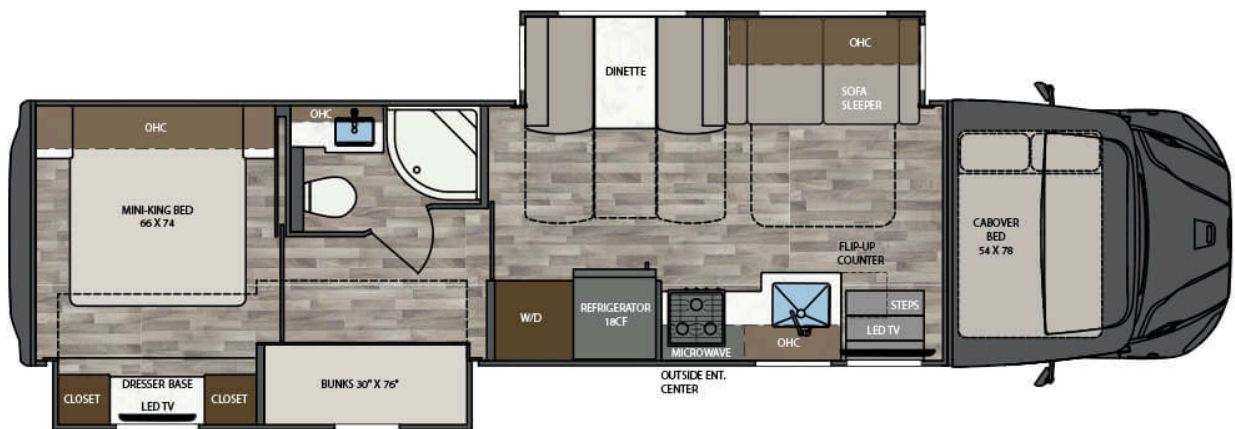


TUNDRA

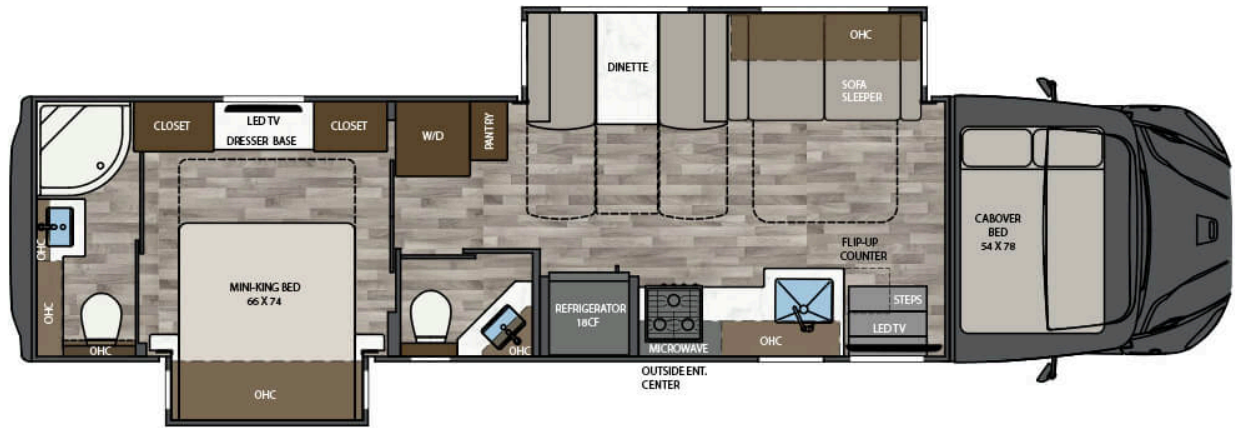
AVAILABLE FLOORPLANS



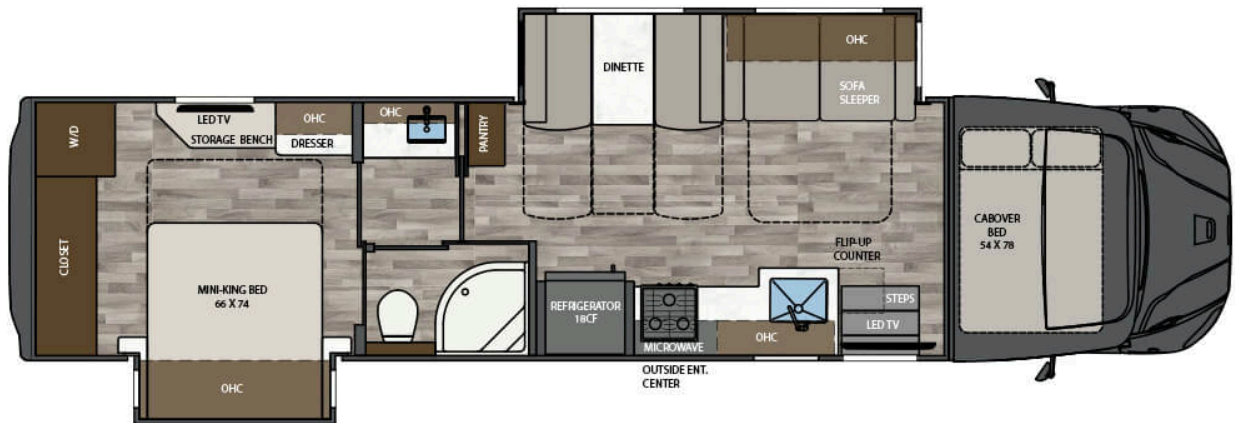
365B



388B



38RB



38RW

INTERIOR DETAILS



Lakewood Cabinetry // Augusta Interior Décor // Live a life of luxury on the road with beautiful hardwood cabinets and premium vinyl flooring.



Lakewood Cabinetry // Augusta Interior Décor // The cab-over bunk area is decked out with a 24" Smart LED TV and USB/USB-C charging ports.



Lakewood Cabinetry // Augusta Interior Décor // The kitchen comes with a stainless steel 3-burner LP cooktop and a convection microwave oven.



Lakewood Cabinetry // Augusta Interior Décor // The bedroom includes a comfortable memory foam mattress and lots of storage space.



Lakewood Cabinetry // Augusta Interior Décor // Relax and unwind in this comfortable seating area with ultra-soft touch vinyl furniture upholstery.



Lakewood Cabinetry // Augusta Interior Décor // The interior of the 2025 Valencia was thoughtfully designed with comfort, luxury and style in mind.



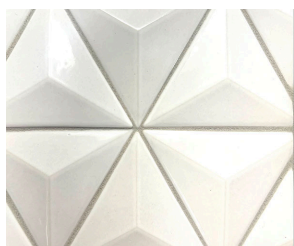
Lakewood Cabinetry // Augusta Interior Décor // The 2025 Valencia comes pre-wired and plumbed for an optional washer/dryer.



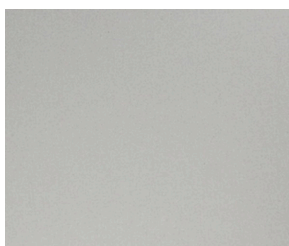
Lakewood Cabinetry // Augusta Interior Décor // Drive this coach with ease and peace of mind thanks to features like rear and side view cameras.



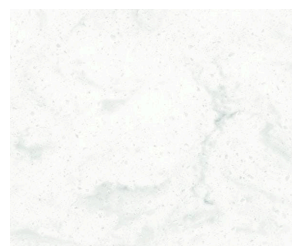
Augusta Décor



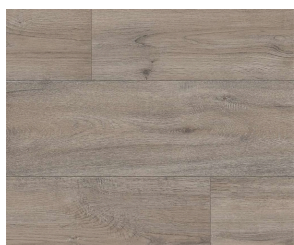
Backsplash



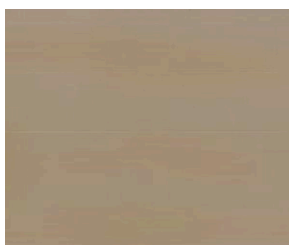
Bedsread



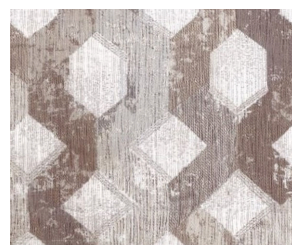
Countertop



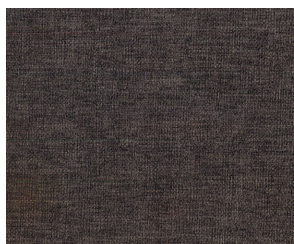
Flooring



Furniture



Sofa Pillows



Valance Accent



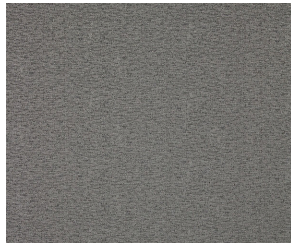
Valance



Hampton Décor



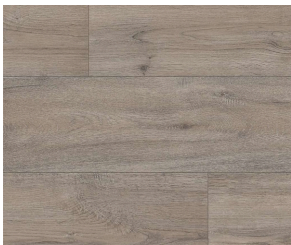
Backsplash



Bedsread



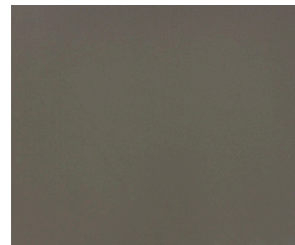
Countertop



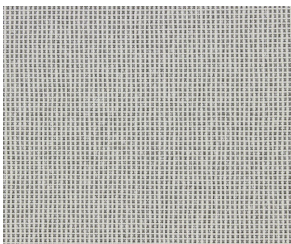
Flooring



Sofa Pillows



Valance Accent & Furniture



Valance



Newport Décor



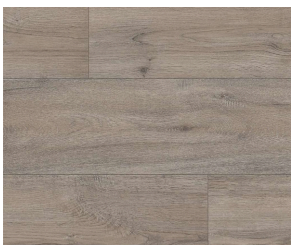
Backsplash



Bedsread



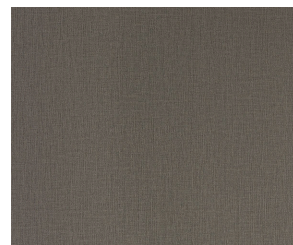
Countertop



Flooring



Sofa Pillow



Valance Accent & Furniture



Valance



Solid Wood Cabinetry Options



Cape Cod



Lakewood

BUILT BY THE BOLD, FOR THE BOLD

We became one of the world's top motorhome brands by building extraordinary coaches. We remain the industry rebels by continuously challenging the status quo in terms of quality, value, power, versatility, durability and style. Starting with the best chassis, and ending with a motorhome that outperforms and outlasts - Renegade RVs are designed for extreme luxury and extreme adventure. Renegade RVs are built for you.

STANDARDS & OPTIONS

CHASSIS AND CAB

- Freightliner® S2RV Chassis Plus
 - Cummins® ISB 6.7L 360HP, 800 lb. ft. Torque
 - 33,000 lbs GVWR
 - Allison® 3000MH Electronic 6-Speed Transmission
 - 12,000 lb. Towing Capacity
 - Single 100-Gallon Fuel Tank with Driver-Side Mounted Fill
 - 10-Gallon DEF Tank
 - Polished Aluminum Wheels with Center Caps
 - Airliner® Rear Air Suspension
 - Auto Drain Valve for Air Brake Reservoirs
 - Garmin® Touch Screen, Bluetooth, GPS, RV Maps, and Color Camera Monitor
 - Rear and Side View cameras
 - Upgraded Cab Sound System
 - JBL® 5.25” Dash
 - 6.25” Ceiling Speakers
 - Premium Freightliner® Sound and Thermal Insulation Package
 - LED Headlight Assemblies
 - Power Windows and Door Locks
 - Power/Heated Remote-Control Mirrors
 - Air Ride Driver and Passenger Seat Pedestals with Swivels
 - Soft Touch Driver/Passenger Seats with Armrests
 - Full Cab Mat
 - Auxiliary Air Chuck and Hose
 - Cummins® VG Engine Braking with Dash Switch
-

EXTERIOR FEATURES

- Aerodynamic Fiberglass Front and Rear Caps, Transition, and Cab Steps
 - Four-Point Hydraulic Leveling System with App
 - Exterior Entry Door Assist Handle
 - Powered Folding Double-Entry Steps
 - (6) Colorway Paint Options
 - Girard® GG Lateral Arm Electric Awning with LED Lights
 - Slide Toppers
 - Frameless Dual-Pane Tinted Windows with Screens
 - Side-Swing Aluminum Compartment Doors with Single-Handle Paddle Latches and Double-Catch
 - Steel Storage Compartments with Carpeted Lining
 - Diamond Shield® Nano-Fusion™ Paint Protection (Front Mask)
-

CONSTRUCTION

- 2" Vacuum Bond Laminated Sidewalls with Welded Aluminum Framing
 - Welded Aluminum Roof Truss System with Framed Cutouts
 - One-Piece Crowned Fiberglass Roof Surface
 - "Super Sandwich" Floor Construction with Composite Underbelly Includes:
 - 2" Welded Steel Floor Joist System Mounted to 3" Steel Longitudinal Floor Beams
 - 3/4" Fir Plywood Deck Over 2 x 4 Wood-Framed Residential Floor with Thermal and Sound Deadening Insulation
-

PLUMBING SYSTEMS

- 150 Gallon Fresh Water Tank
 - 75 Gallon Gray Tank
 - 75 Gallon Black Tank
 - 20 Gallon LP Tank
 - See-Level® Tank Monitoring System
 - Full Maintenance Wet Bay
 - Black Tank Flush System
 - Fresh Water Fill - City Water Hookup
 - Outside Faucet with Sprayer
 - On-Demand Water Pump
 - Whole House Water Filtration System
 - LP Quick Disconnect
-

INTERIOR FEATURES

- (3) Interior Décor Options
 - Décor Coordinating Fabric Valances
 - Double Roller Day/Night Shades (Manual)
 - Decorative Wallboard with Coordinating Accent in Slideouts
 - Premium Vinyl Flooring Throughout
 - Maple Hardwood Cabinetry
 - 2-Wood Stain Color Options
 - Dovetail Drawers on Soft Closing Slides
 - Framed Doors on Hidden Hinges
 - Pantry (N/A 38BB)
 - Hardwood Slide Fascia
 - Satin Nickel Door Hardware
 - Satin Nickel Kitchen Faucet
 - Solid Surface Countertops Throughout
 - Rectangular Single Bowl Undermount Kitchen Sink with Cover
 - Grouted Tile Backsplash
 - Flip-Up Countertop Extension
 - LED Lighting
 - Memory Foam Mattress
 - Ultra Soft Touch Vinyl Furniture Upholstery
 - Convertible Booth Dinette with Storage
 - Sofa Sleeper, Tri-Fold
 - Cabover Bunk with Window and Power Shade
-

BATH

- Maple Hardwood Vanity, Medicine, and Linen Storage Cabinets
 - LED Vanity Light
 - Deluxe Satin Nickel Bath Faucet and Adjustable Showerhead
 - Satin Nickel Towel Bar, Towel Ring, and Toilet Paper Holder
 - Porcelain Macerator Toilet with Push Button Flush
 - Solid Surface Countertop with Integrated Sink
 - Wavy Patterned Fiberglass Shower with Glass Door
 - Skylight Over Shower
-

APPLIANCES

- 18.0 cu. ft. Residential Stainless-Steel refrigerator with icemaker
 - Recessed Sealed 3-Burner Stainless-Steel LP Cooktop
 - 1.7 cu. ft. Stainless-Steel Convection Microwave Oven
 - Truma® Aquago Comfort Plus Tankless Water Heater
 - (2) 15,000 BTU Roof A/C with Heat Pumps and Plumbed Condensation Lines
 - Ducted Air Conditioning
 - 35,000 BTU LP Ducted Gas Furnace
 - MaxxAir® Power Vents
 - Pre-Wired and Plumbed for Optional Washer/Dryer
 - Carbon Monoxide, LP and Smoke Detectors, and Fire Extinguisher
-

ELECTRICAL SYSTEMS

- 8KW Onan Quiet Diesel Generator
 - Automatic Generator Start System
 - 50-Amp Electrical Panel
 - 3,000w True Sine Wave Inverter
 - Transfer Switch with Surge Protection
 - 330Ah AGM House Battery
 - Solar Charging System Pre-Wire
 - Multiplex Control System with Bluetooth App Control
 - USB/USB-C Charging in Living Area, Bedroom, Kitchen and Bunk Areas
 - 50-Amp Power Retractable Shore Cord Reel
 - 12V Holding Tank Heaters, Gray and Black Tanks
-

ENTERTAINMENT SYSTEMS

- 42" Smart LED TV in Living Area
 - Soundbar Home Theater with Bluetooth Streaming and Wireless Subwoofer in Living Area
 - 32" Smart LED TV in Bedroom
 - Exterior Entertainment Center
 - 32" Smart LED TV on Swivel
 - Soundbar with Bluetooth Streaming
 - USB Charging
 - Winegard® Connect 2.0 Rooftop OTA Antenna with Wi-Fi and 4G Ready (SIM Card Req.)
 - Prewire for Winegard® In-Motion Satellite System
 - Prewire for Winegard® Trav'ler Stationary HD Satellite System
-

POPULAR OPTIONS

- Reclining Theater Seat ILO Standard Sofa
 - 24" Smart LED TV at Cabover Bunk
 - Winegard® In-Motion Satellite Dish
 - Winegard® HD Satellite Trav'ler Pro
 - 600W Solar Panel System (3 at 200W)
 - (3) 100Ah Lithium Batteries ILO AGM Batteries
 - American Racing Wheels® Upgrade
 - Caliber 9® Grille Package (Available in Chrome or Black)
 - Full-Width Rock Guard Mud Flap
 - Washer and Dryer Stack
-

	36SB	38BB 38RB 38RW
Overall Exterior Length	36' 10"	38' 02"
Exterior Width	99.25"	99.25"
Wheelbase	263"	279"
Overall Exterior Height (Includes 15,000 BTU Roof Air Conditioners)	12' 10"	12' 10"
Interior Height	84"	84"
Fuel Tank Capacity	100 Gallons	100 Gallons
DEF Tank Capacity	10 Gallons	10 Gallons
Fresh Water	150 Gallons	150 Gallons
Gray Water	75 Gallons	75 Gallons
Black Water	75 Gallons	75 Gallons
LPG Capacity Gallons/lbs	20.3 Gallons 71 lbs	20.3 Gallons 71 lbs

THE RENEGADE RV WARRANTY

New Renegade motorhomes are covered by a 1-year unlimited miles limited warranty, plus a 3-year 36,000-mile limited structural warranty.

All Renegade motorhome chassis, engines and transmissions, and drivetrain warranties are provided and administered by their respective manufacturers.

For specific information about these warranties, [ask your dealer](#) or [contact Renegade RV](#).

