

# VIBE



2025 MIDWEST AND WEST



FOREST  
RIVER

# VIBE

2025 MIDWEST



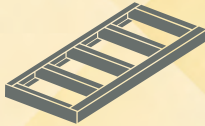
FOREST  
RIVER



# Lightweight, Luxury, Loaded



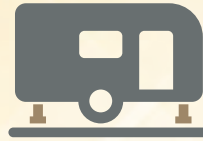
On Demand Tankless Water Heater (55K BTU)



BAL NXG Huck-Bolted Frame



Slam Latch Doors



Power Stabilizer /Tongue Jacks



Enclosed underbelly with 12V Tank Heating Pads



3 A/C Units Standard (on select models/optional on others)



Mor-Ryde Solid Entry Step



18K BTU A/C



PVC Roof Membrane with Lifetime Membrane Warranty



Quick Propane Disconnect



New Massive Opening Square Panoramic Windows



Thomas Pane Premium Residential Furniture



Optional Free Standing Table and Chairs



100% PDI (Pre-delivery Inspection)



Spread Axle Suspension



Seamless Kitchen Countertops



Powder Coated Cabinet Doors



10.7 cu. ft. 12V Refrigerator



Electronic Residential Microwave/Convection Oven/Air Fryer Combo



Universal Docking Station



Large Smart TV



6,000 BTU Fireplace (most models)



Foot Flush Ceramic Toilet



Battery Disconnect Switch



Washer/Dryer Prep



Custom King Size Mattress (78" x 66")

## Let's Talk Construction

### Exterior

- All new redesigned high gloss fiberglass exterior
- Laminated side, rear, floor and slideouts
- 2" laminated block foam floors (1.5" sidewalls)
- Finished pass through storage with peg board
- Aluminum Framed
- 16" on center fully walkable wood truss roof
- Lifetime warranty on PVC Membrane
- 3/4 painted fiberglass front cap with stone guard
- Heated and enclosed underbelly with 12V tank heating pads
- NXG Huck bolted frames- stronger/more durable than welds, rust proof



FOREST RIVER

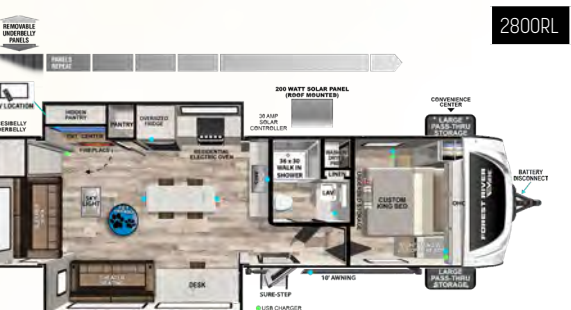
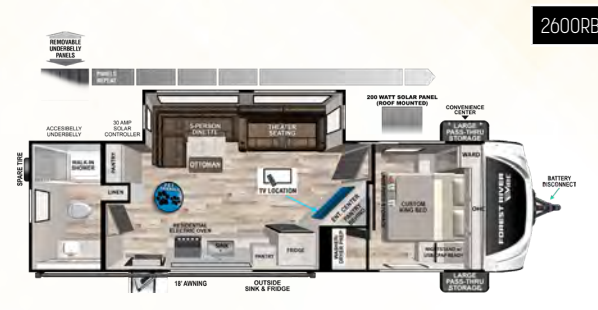
### Interior

- 80" interior ceiling height
- Shaw residential linoleum flooring (no carpet)
- BAL Accu-cable slide system
- Seamless Kitchen Countertops (select models)
- Solid wood drawer bases with full extension drawer guides
- No ducts in the floor or ceilings (creates much cooler environment)
- Oversized residential farmhouse sink (select models)
- European style camp side windows (select models)
- Theatre seating (most models, available as an option)

# VIBE

## FLOORPLANS

	UVW	HITCH	CCC	LENGTH	HEIGHT	CAPACITY (GAL)		
2400RB	6,303 LB	820 LB	1,517 LB	29' 9"	11' 4"	38	96	30
2500DB	6,053 LB	850 LB	1,797 LB	29' 10"	11' 4"	38	60	30
2500SP	6,663 LB	805 LB	2,942 LB	29' 11"	11' 4"	38	96	30
2600BH	TBD LB	TBD LB	TBD LB	TBD	11' 4"	TBD	TBD	TBD
2600RB	TBD LB	TBD LB	TBD LB	TBD	11' 4"	TBD	TBD	TBD
2600RK	6,938 LB	875 LB	2,737 LB	34' 0"	11' 4"	38	96	30
2800RL	7,793 LB	1,055 LB	2,062 LB	35' 0"	11' 4"	38	96	30
3400BH	8,933 LB	1,195 LB	1,062 LB	39' 10"	11' 4"	38	106	30
3400SB	8,708 LB	1,275 LB	2,767 LB	39' 10"	11' 4"	38	96	30
3400XL	8,780 LB	1,120 LB	2,000 LB	39' 10"	11' 4"	38	106	30





# VIBE

2025 WEST



FOREST  
RIVER



24DB





# Standards and Options

## EXTERIOR STANDARDS

### **SINGLE AXLE FLOORPLANS**

- Full Walk-On Truss Roof System (3" in the Center Tapered to 2" on Edge for Water Run-Off)
- XTRM-PLY PVC Roofing with 86% Solar Reflectance (LOW MAINTENANCE, STRONGEST RV ROOF ON THE MARKET with 15 Year Warranty)
- Fiberglass Sided Laminated "Aluma Frame" Side Walls, Rear Wall, Slideout Boxes & 2¼" Laminated Floor
- *All Seasons Insulation Package:*  
1" High Density Foam in Sidewalls, 2" High Density Foam in Floor, Double R-7 Roof Insulation, Dura Wrapped Holding Tanks, Double R-7 Insulation, & 12V Thermostatically Controlled Heat Pads on all Holding Tanks, Furnace Heated Underbelly with Removable Underbelly Armor Panel System
- Aerodynamic Aluminum Front Cap with Diamond Plate Protection
- Self-Adjusting Brakes & Easy Lube Axles
- Floorplan Specific Engineered Cambered Chassis with Mega Ground Clearance
- One Touch Large Electric Awning with LED Night Light
- 12 Volt Disconnect on all Models
- Oversized Front Pass Through Storage Compartments with Magnetic Catches & Interior Light
- 110 GFI Outlet, Cable & Satellite Prep
- WiFi Ready King Auto Seek Digital TV Antenna with Booster
- Hyper Lite Construction: Amazingly Light & Strong
- Stabilizing Jacks on all Four Corners
- Stylish Aluminum Wheels to Keep Brakes Cool, with Radial Tires & Spare
- Foldable, Large Easy Assist Entry Door Grab Handle
- 13.5 BTU Air Conditioning
- Ultra Dark Oversized Safety Glass Windows
- Outside Shower System With Hot & Cold Water (Great to Clean the Sewer Hose After Dumping)
- Pre-Wired 200 Watt Quick Charge Solar Panel with 30 Amp Controller—Expandable to 600 Watts
- Forest River Provided Roadside Assistance

### **DOUBLE AXLE FLOORPLANS**

#### ***ALL SINGLE AXLE FEATURES', PLUS:***

- Laminated, Easy Clean Fiberglass with Contemporary Graphics Package
- 30" Main Entrance Door With Friction Hinge & Extra Large Grab Bar (Most Models)
- Easy Load Wide Stance Entry Step w/500 lb. Rating at Main Entrance
- Best in Class Ultra Dark Tinted Safety Glass Panoramic Windows
- Quick Cool Ducted 13.5 BTU A/C with Prefabricated Styrofoam Duct Work
- Pre-Plumbed Propane Quick Disconnect

- Quick Drop Stabilizer Jack System
- Two 20 lb. Propane Tanks w/Auto Change Over & Easy Fill Propane Tank Cover (30 lb. Optional)
- 3500 LB Front Hitch Power Jack with LED Hitch Light
- Black Tank Flush on all Models
- Outside Kitchens on Most Models
- Rear Observation Camera Prep with Mounting Plate
- Lippert Stow and Go Ladder Bracket (Telescopic Ladder Available in Parts Department)

## INTERIOR STANDARDS

### **SINGLE AXLE FLOORPLANS**

- Solid Surface Thermofoil Wrapped Kitchen Countertops and Table Tops
- Residential Style High Rise Faucets w/Built in Sprayer
- Custom Built Cabinetry: Solid Core Wood Stiles, Screwed & Stapled w/Hidden Hinges on Cabinet Doors
- Custom Scratch Resistant Power Coated Cabinet Doors & Drawers
- 10+ CU. FT. Stainless Steel 12 Volt Quick Cool Refrigerator
- Deep Solid Wood Full Extension Drawers with Residential Ball Bearing Drawer Guides
- Ultra Bright LED Lighting Throughout, Saves Electricity & 90% Cooler than Incandescent
- 60,000 BTU On Demand/Quick Hot Tankless Water Heater w/Active Freeze Protection (Endless Hot Water)
- 3-Speed Fan in Bathroom Area
- Decorative Color Coordinated Window Treatments with Color Coordinated Room Darkening Roll Shades
- Comfortable High Density Memory Foam Dinette Cushions with Mega Storage Below
- 110 Outlets & USB Chargers On Each Side Of Bed, plus USB Chargers in Multiple Locations
- Dometic Pedal Easy Flush Toilet
- 12 Volt Dynamic Sound Bluetooth Speaker

### **DOUBLE AXLE FLOORPLANS**

#### ***ALL SINGLE AXLE FEATURES', PLUS:***

- Industrial Style High Rise Faucet with Built in Sprayer
- Residential Solid Surface Countertop with Oversized Undermounted Single Bowl Stainless Steel Sink with Built in Drying Rack & Decorative Kitchen Backsplash
- Stainless Steel Oven with 3 Burner Range w/Sealed Burners (Front Burner Is High Output with Glass Cover)
- Oversized Kitchen Skylight with Blind
- Large Built In Trash Can Storage with Easy Access
- 80" Ceiling Height with 70" Slide Out Boxes
- Stylish Electric Fireplace Heats up to 500 Square Feet
- 40"- 50" LED HD TV with Bluetooth/FM Radio & Built in Soundbar
- Residential Grade Linoleum & Carpet
- Residential Style Memory Foam Tri Fold Sofa
- Oversized Pantry & Hanging Closet in Most Models

- Below The Bed Storage with Gas Struts
- Pre-Blocked & Prewired Bedroom TV Location
- Upgraded Pillowtop Mattress with Bedspread and Pillow Shams

## FAMILY CAMPING PACKAGE

### **SINGLE AXLE FLOORPLANS**

- Stylish Aluminum Wheels With Radial Tires & Spare
- 12 Volt Battery Disconnect
- Black Tank Sanitation Flush
- 12V Thermostatically Controlled Heat Pads on all Holding Tanks, Furnace Heated Underbelly with Removable Underbelly Armor Panel System
- Flip-Up Countertop Extension (not available on all floorplans)
- Stainless Steel Flush-Mounted Kitchen with Sink Cover
- Outside Shower System with Hot & Cold Water
- Second Bunk Window (not available on all floorplans)
- One Piece Tub Walls with Skylight Over Tub/Shower
- Upgraded Teddy Bear Bunk Mats (not available on all floorplans)
- Upgraded Hidden Hinges on All Cabinet Doors

### **DOUBLE AXLE FLOORPLANS**

#### ***ALL SINGLE AXLE FEATURES', PLUS:***

- Coat Rack(DA)
- 3- Speed Fantastic Fan

## PREMIUM PACKAGE

### **SINGLE AXLE FLOORPLANS**

- Backup Camera Preparation
- Portable Bluetooth Stereo Speaker
- Decorative Window Treatments (dinette only)
- Electric Awning with LED Night Awning Light
- Magnetic Latches On Access Compartment Doors
- Decorative Blackout Roller Shades with Automatic Stop
- Recessed 2-Burner Cooktop with Glass Cover
- Seamless Countertop with Undermount Single Bowl Stainless Steel Sink
- 200 Watt on Board Solar System with 30 Amp Controller (Expandable to 600 Watts)
- USB Port Package in Convenient Locations
- Upgraded Designer Kitchen Faucet with Built in Sprayer

### **DOUBLE AXLE FLOORPLANS**

#### ***ALL SINGLE AXLE FEATURES', PLUS:***

- 40" TV With Built in Bluetooth, AM/FM & Dual Zone
- Decorative Window Treatments
- Electric Fireplace with Crystals Heats up to 500 Square Feet on 110 Current
- Power Saving LED Lights Throughout
- Outside Kitchen on Most Models

- Front Power Tongue Jack with Led Hitch Light
- Residential Solid Surface Countertop w/ Oversized Undermounted Single Bowl Stainless Steel Sink, Built in Drying Rack & Decorative Kitchen Backsplash
- Easy Load Wide Stance Entry Step w/500 lb. Rating at Main Entrance
- Quick Drop Stabilizer Jack System
- Upgraded Appliance Package
- 30" Main Entrance Door With Friction Hinge & Extra Large Grab Bar (Most Models)

## OPTIONS

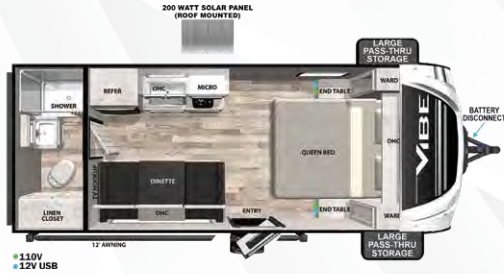
- Back Pack Rack Fold Down Storage Rack on Rear Bumper
- Recliners in place of Dinette
- Free-Standing Table & Chairs
- Theater Seating In Place Of Tri-Fold Sofa Sleeper
- 2nd 13.5k A/C In Bedroom With 50 AMP Service
- 15k BTU Ducted A/C IPO 13.5k
- 30 lb. LP Bottles With Cover
- 50 AMP Service With Wire & Brace for 2nd A/C
- (OHV) Off Road Tire Package on Single Axle Models Only

SCAN HERE  
FOR MORE INFO



*\*Double Axle features are the same or upgraded*

# Single Axle Floorplans



**16RB**

UVW	HITCH	CCC	LENGTH	HEIGHT	CAPACITY (GAL)
3,379	390	1,411	21' 11"	10' 8"	38 30 30



**17DB**

UVW	HITCH	CCC	LENGTH	HEIGHT	CAPACITY (GAL)
3,817	538	1,121	22' 5"	10' 8"	39 27 27

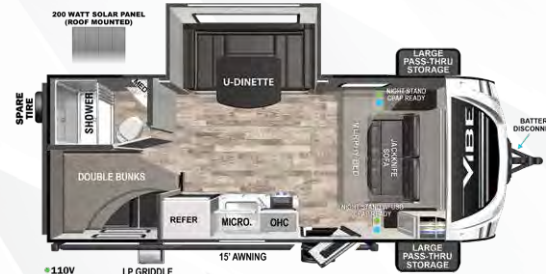


**16RB**



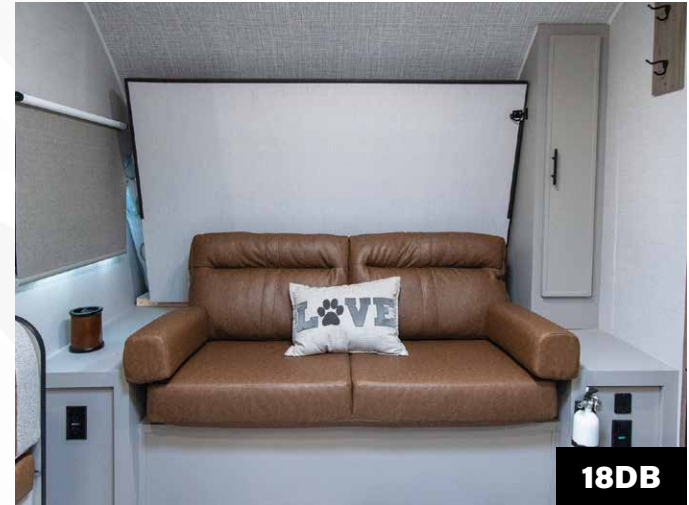
**17RS**

UVW	HITCH	CCC	LENGTH	HEIGHT	CAPACITY (GAL)
4,068	582	914	23' 1"	10' 8"	38 30 30



**18DB**

UVW	HITCH	CCC	LENGTH	HEIGHT	CAPACITY (GAL)
4,113	518	805	22' 11"	10' 8"	39 27 32



**18DB**



**18DB**





**16RB**



**18DB**



**18DB**

### **Remote. Control.**

You take the road less traveled.  
You go the extra mile.  
And you always cross that bridge when you come to it.  
Adventure is calling, and Vibe is your ticket to explore. Our units ship with battery, 30 AMP solar controller, and 200W solar panel already installed—so you always have the power you need to go off-grid and use your 12-volt system.

With a range of bunks and couple's coaches, the Vibe lineup is perfectly positioned to exceed your expectations—without sacrificing performance or reliability.

**Avoid the clichés. See why Vibe is right for you.**





# Double Axle Floorplans



**22RB**

UVW	HITCH	CCC	LENGTH	HEIGHT	CAPACITY (GAL)
5,372	606	2,234	25' 10"	10' 11"	38 64 32



**24DB**

UVW	HITCH	CCC	LENGTH	HEIGHT	CAPACITY (GAL)
5,741	759	2,018	28' 6"	10' 11"	38 64 32



**25KR**

UVW	HITCH	CCC	LENGTH	HEIGHT	CAPACITY (GAL)
5,800	634	1,834	29' 7"	10' 11"	38 66 33



**26DB**

UVW	HITCH	CCC	LENGTH	HEIGHT	CAPACITY (GAL)
6,640	686	2,846	34' 2"	11' 2"	39 96 32



**26RB**

UVW	HITCH	CCC	LENGTH	HEIGHT	CAPACITY (GAL)
6,464	884	3,220	31' 11"	11' 3"	39 74 32



**26RK**

UVW	HITCH	CCC	LENGTH	HEIGHT	CAPACITY (GAL)
6,796	748	2,752	34' 5"	11' 2"	39 64 32



**26RL**

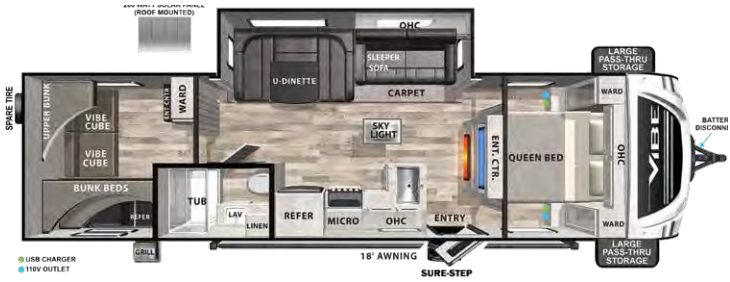
UVW	HITCH	CCC	LENGTH	HEIGHT	CAPACITY (GAL)
6,660	880	3,020	32' 11"	TBD	39 32 42





**27FK**

UVW	HITCH	CCC	LENGTH	HEIGHT	CAPACITY (GAL)
7,227	1,003	2,576	32' 5"	11' 2"	38 64 32



**28QB**

UVW	HITCH	CCC	LENGTH	HEIGHT	CAPACITY (GAL)
6,893	915	2,822	35' 3"	11' 2"	39 64 32



**Travel almost anywhere — in comfort and style**



**25KR**



**26DB**





**Get out there.**



**PRE-DELIVERY INSPECTION FACILITY**  
20,000 square feet of quality assurance. The bare essentials for a premium product. This state-of-the-art facility gives immediate daily feedback to production for quality assurance in every unit built.

**CUSTOMER SATISFACTION**



[www.ForestRiverBuyLocal.com](http://www.ForestRiverBuyLocal.com)



**24/7 EMERGENCY  
ROADSIDE ASSISTANCE  
WITH VEHICLE PURCHASE\***

TOWING  
JUMP-STARTS  
TIRE CHANGES  
FLUID DELIVERY  
LOCKOUT  
SERVICE

WINCH-OUT  
MOBILE MECHANIC  
TECHNICAL  
SUPPORT  
DEALER LOCATOR  
SERVICES



\*VALID FOR 1 YEAR FROM DATE OF PURCHASE

Download our Forest River mobile app or visit our dynamic online manual to enhance your ownership experience. These interactive options provide incredible ease and insight into use, maintenance and enjoyment of your Forest River product.

Ranging from "How-To" videos, pictures and illustrations of various components, systems and features, to fully searchable content and downloadable PDFs for individual component owner's manuals, answers are always just a click away. View the online manual at [www.forestriverinc.com/OnlineManual](http://www.forestriverinc.com/OnlineManual) or download our FREE app from the App Store or Google Play!



\*\*Starting January 1, 2024

**FREE MEMBERSHIP**  
to Forest River Owners' Group

[www.forestriverfrog.com](http://www.forestriverfrog.com)



**Learn More**  
Scan this barcode using a QR Reader on your smart phone to learn more about Forest River.



A Berkshire Hathaway company.

*GVWR (Gross Vehicle Weight Rating) - is the maximum permissible weight of the unit when fully loaded. It includes all weights, inclusive of all fluids, cargo, optional equipment and accessories. For safety and product performance do NOT exceed the GVWR.*

*GAWR (Gross Axle Weight Rating) - is the maximum permissible weight, including cargo, fluids, optional equipment and accessories that can be safely supported by a combination of all axles.*

*UVW (Unloaded Vehicle Weight)\* - is the typical weight of the unit as manufactured at the factory. It includes all weight at the unit's axle(s) and tongue or pin and LP Gas. The UVW does not include cargo, fresh potable water, additional optional equipment or dealer installed accessories.*

*CCC (Cargo Carrying Capacity)\*\* - is the amount of weight available for fresh potable water, cargo, additional optional equipment and accessories. CCC is equal to GVWR minus UVW. Available CCC should accommodate fresh potable water (8.3 lbs per gallon). Before filling the fresh water tank, empty black and gray tanks for more cargo capacity.*

*\*Estimated Average based on standard build optional equipment. \*\* Estimated average based on standard build optional equipment. Values estimated at time of printing.*

Each Forest River RV is weighed at the manufacturing facility prior to shipping. A label identifying the unloaded vehicle weight of the actual unit and the cargo carrying capacity is applied to every Forest River RV prior to leaving our facilities. The load capacity of your unit is designated by weight, not by volume, so you cannot necessarily use all available space when loading your unit.

All information contained in this brochure is believed to be accurate at the time of publication. However, during the model year, it may be necessary to make revisions and Forest River, Inc., reserves the right to make all such changes without notice, including prices, colors, materials, equipment and specifications as well as the addition of new models and the discontinuance of models shown in this brochure. Therefore, please consult with your Forest River, Inc., dealer and confirm the existence of any materials, design or specifications that are material to your purchase decision. ©2024 Vibe, a division of Forest River Inc., a Berkshire Hathaway company.