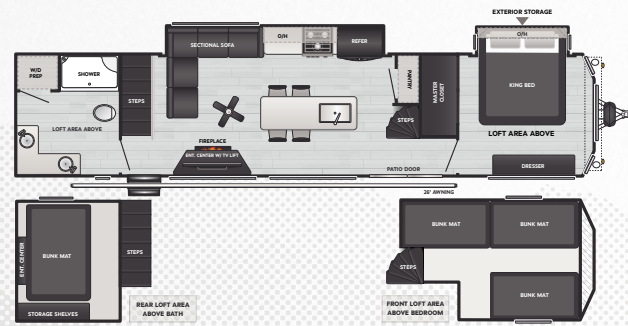




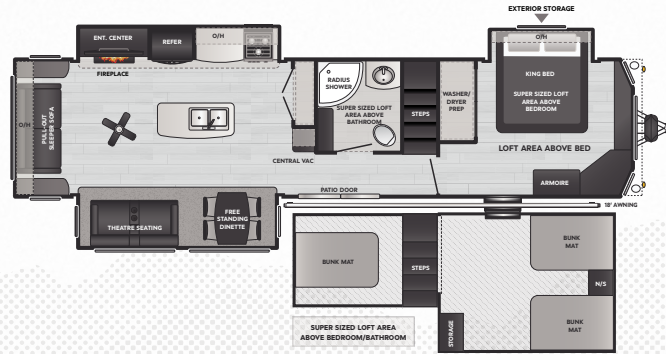
**KEYSTONE**  
RV COMPANY

# RESIDENCE

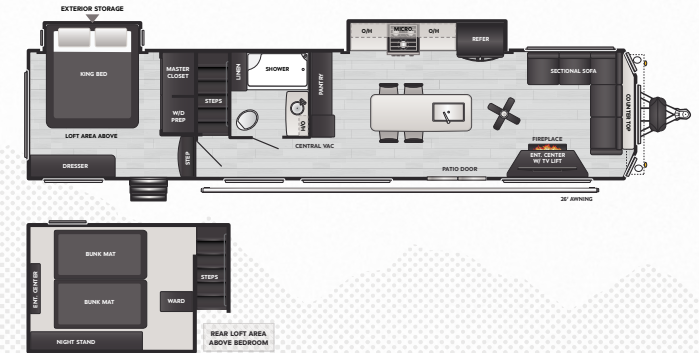
2025 | DESTINATION TRAILERS



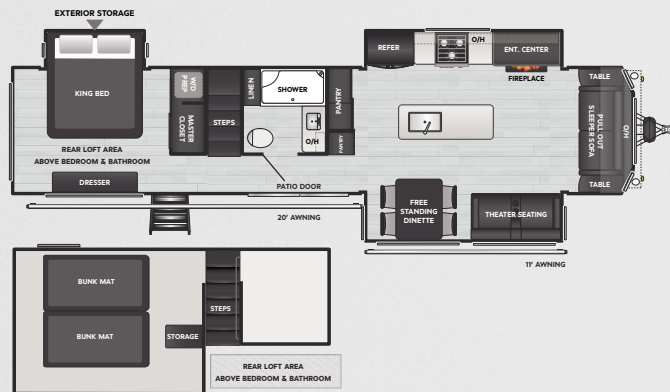
**40/401CLDL** WEIGHT 12710 LENGTH 42' 11"



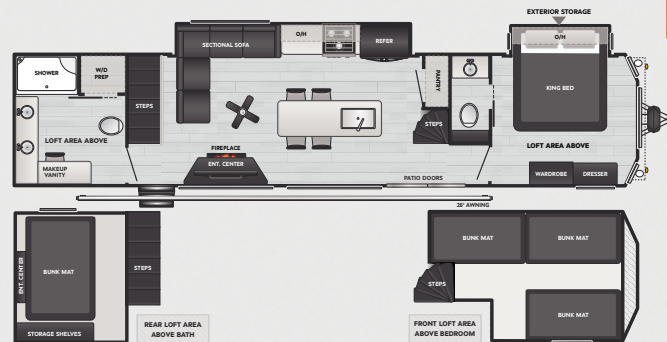
**40/401FLFT** WEIGHT 13126 LENGTH 40' 11"



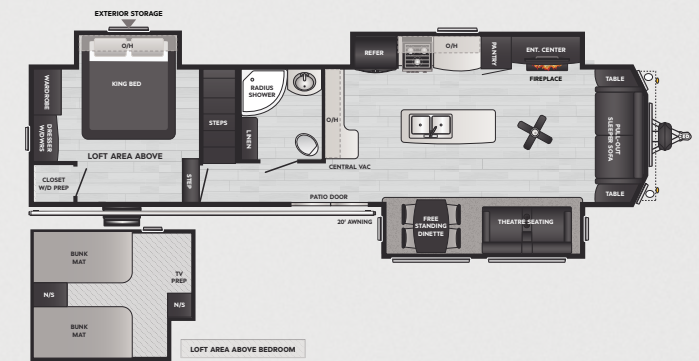
**40/401FLSL** WEIGHT 12220 LENGTH 42' 11"



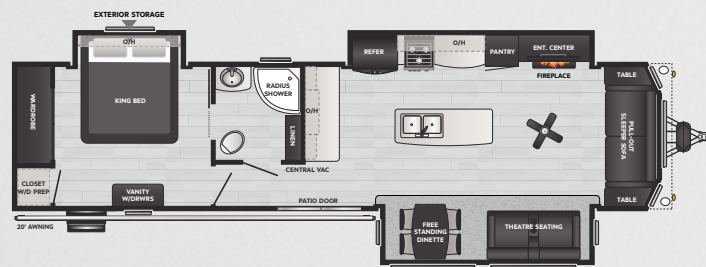
**40/401FSRL** WEIGHT TBD LENGTH 41' 6"



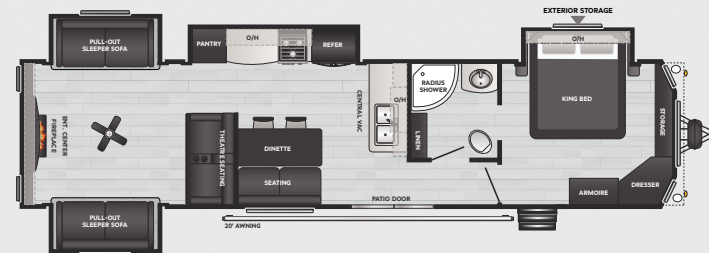
**40/401HBDL** WEIGHT TBD LENGTH 42' 11"



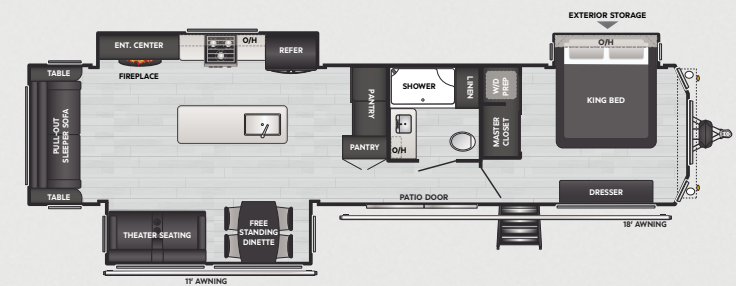
**40/401LOFT** WEIGHT 12538 LENGTH 40' 8"



**40/401MKTS** WEIGHT 12065 LENGTH 40' 8"



**40/401RDEN** WEIGHT 12135 LENGTH 40' 11"



**40/401RS** WEIGHT TBD LENGTH 40' 11"



DISCLAIMER: Product information is as accurate as possible as of the date of this publication. All features, floor plans, and specifications are subject to change without notice. Pre-production estimated weights & lengths may be listed; visit [Keystonerv.com](http://Keystonerv.com) for the most current product information and specifications.

**CAMP BETTER**  
KINDNESS · COMMUNITY · PLANET







**KEYSTONE**  
RV COMPANY

# RESIDENCE

2025 | DESTINATION TRAILERS

## INTERIOR

- » Extra Large Tri-Fold Sofa (Select Models)
- » Upgraded Theatre Seating (Select Models)
- » Raised Panel Hardwood Cabinet Doors and Drawers
- » Wood Core Cabinets Screwed Together
- » Residential Hidden Cabinet Door Hinges W/ Magnetic Catches
- » Hardwood Slide Fascia
- » Power Exhaust Fan With Easy-Access Wall Switch
- » Solid Surface Kitchen Countertops
- » Stainless Steel, Undermount Kitchen Sink
- » Residential High-Rise Kitchen Faucet
- » Decorative Kitchen Backsplash
- » Hardwood Dinette Table Tops
- » Central Vacuum
- » Residential Pull Shades on Windows
- » Electric Pull Shades on Skyview Windows
- » 4G LTE Hotspot + WiFi Booster Prep
- » Ceiling Fan
- » Porcelain Toilet
- » Extra Large Shower
- » King Size, Residential Mattress
- » Decorative Bedspread with Designer Pillow Package
- » Convenient Under Bed Storage and Shoe Rack

## EXTERIOR

- » Enclosed Underbelly
- » (2) 30 LBS. LP Bottles W/ Cover
- » Detachable Hitch (N/A CLDL, FLFT, HBDL)
- » Deep Tinted Safety Glass Windows
- » Exterior Storage Under Bed Slide
- » Outside Shower
- » Black Tank Flush
- » Dual Attic Vents

## OPTIONS

- » (4) Stabilizer Jacks
- » Power Awning W/ LED Light
- » Dual Pane Windows (401 Series Only)

## EQUIPMENT

- » 16 Cu. Ft. Residential Refrigerator
- » 30" Over The Range Residential Microwave
- » 24" Residential 3-Burner Gas Range W/ Extra Large Oven
- » 42K BTU Furnace
- » Triple Air Conditioner Package (CLDL, HBDL, FLSL, RS, FSRL)
- » Double Air Conditioner Package (FLFT, LOFT, MKTS, RDN)
- » Extra Large Fireplace with 5K BTU Heating Element
- » 16 Gallon Gas/Electric Water Heater
- » XL Electric Awning W/ LED Light Strip
- » 50" 4K Television
- » 50 AMP Electrical Service W/ Detachable Cord
- » Washer/Dryer Prep

## MISCELLANEOUS

- » 3-Year Limited Structural Warranty
- » 1-Year Limited Base Warranty
- » Keystone Digital Owner's Manual
- » First Time Camper's Video Series
- » DIY Repair Program

## CONSTRUCTION

- » 102" Wide Body Design
- » Walk-On Roof with 3/8" Decking
- » Extra Tall 5" Roof Trusses on 16" Center
- » 5" Roof Fiberglass Insulation
- » One-Piece TPO Roof Membrane with Lifetime Warranty
- » 2" Wall Construction on 16" Centers (40 Series)
- » Aluminum Framed, Fiberglass Exterior (401 Series)
- » 8' Sidewalls (Select Models)
- » 7' Slide Room Height (Select Models)
- » 3" Floor Joists on 16" Centers with Full Floor Insulation
- » 5/8" Dyna Span Floor Decking with 25 Year Warranty
- » 12V Color-Coded Wiring
- » Tuf-Lok™ Thermoplastic A/C Duct Joiners
- » Tru-Fit™ Slide Construction
- » 53 Gallon Fresh Water Tank

# STANDARD FEATURES & OPTIONS



DISCLAIMER: Product information is as accurate as possible as of the date of this publication. All features, floor plans, and specifications are subject to change without notice. Pre-production estimated weights & lengths may be listed; visit [Keystonerv.com](http://Keystonerv.com) for the most current product information and specifications.

**CAMP BETTER**  
KINDNESS · COMMUNITY · PLANET

