



CLASS C DIESEL
2025 VERONA LE

Version 2025.3 • Current as of 12/18/2024
All Features Are Subject To Change Without Notice Or Obligation

MOTORHOME LUXURY THAT GOES THE EXTRA MILE

Surround yourself with the space you deserve while maintaining exceptional quality and design in the Renegade RV Verona LE. The 2025 Verona LE is a Class C diesel that features hidden sleeping areas, polished solid surface countertops, solid hardwood cabinets and a tile backsplash. A full bath and plenty of storage allow you to enjoy all the comforts of home while on the road. The Renegade Verona LE has everything you need in an RV.

LENGTH	TOWING CAPACITY	BATHROOMS
37' 6"-39' 6"	20,000 lbs	1-1.5

EXTERIOR PAINT OPTIONS



PATHFINDER



RANGER



TRAILBLAZER



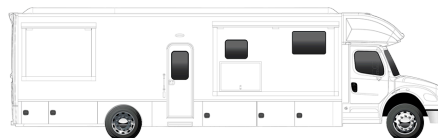
VOYAGER



WAYFINDER

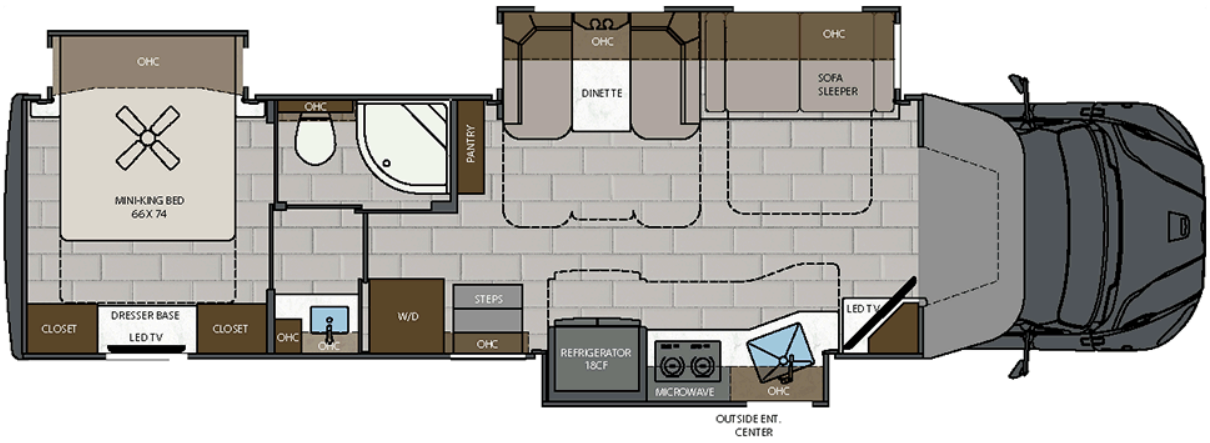


POLARIS

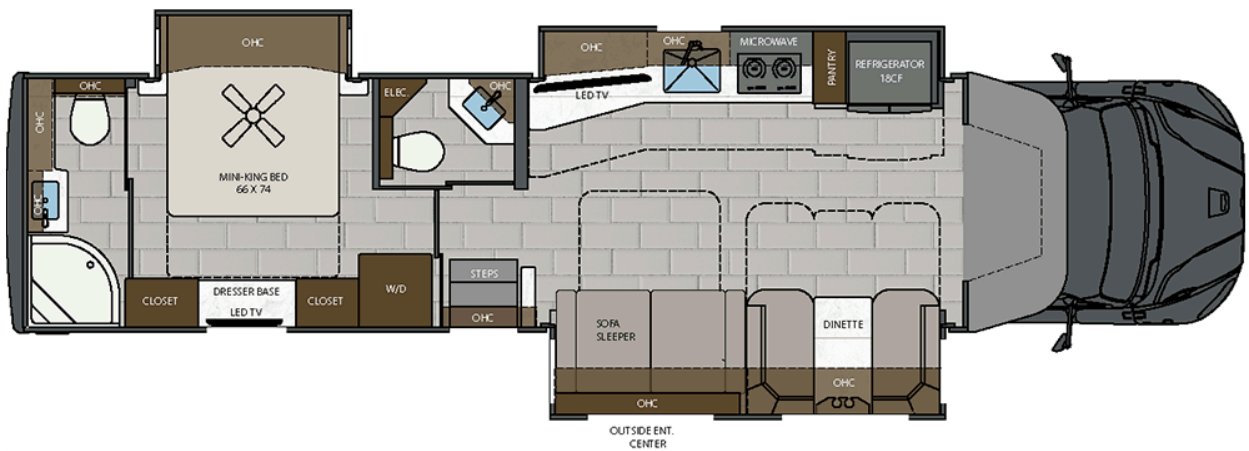


TUNDRA

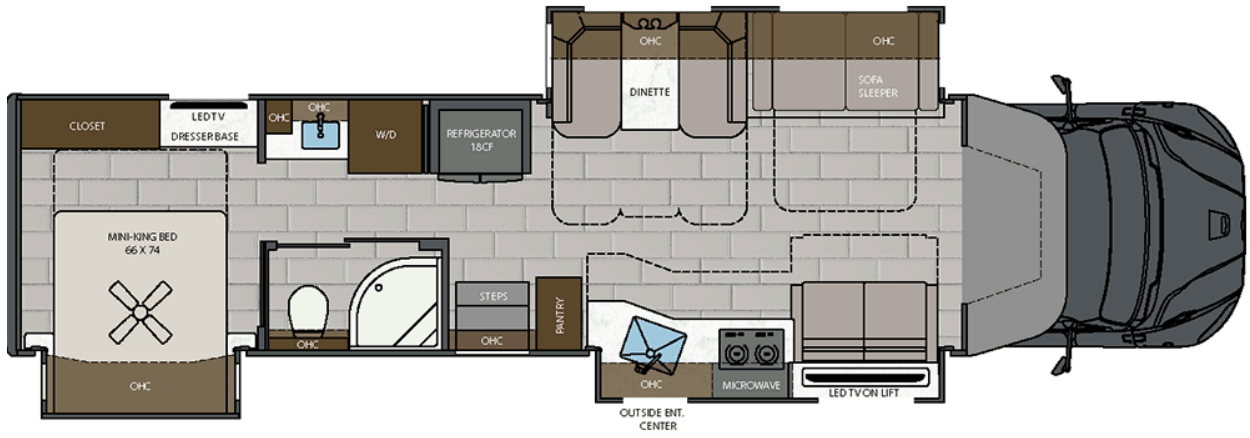
AVAILABLE FLOORPLANS



38LDG



40LRB



40LTS

INTERIOR DETAILS



Rockport Cabinetry // Harbor Interior Décor // The 2025 Verona LE has a residential feel with porcelain tile flooring and maple hardwood cabinetry.



Rockport Cabinetry // Harbor Interior Décor // Prepare your favorite meals on the road in this beautiful and functional kitchen.



Rockport Cabinetry // Harbor Interior Décor // There are plenty of comfortable seating options in the 2025 Verona LE.



Rockport Cabinetry // Harbor Interior Décor // The bedroom in the 2025 Verona LE has a memory foam mattress, a 32" 4K Smart LED TV and plenty of storage.



Rockport Cabinetry // Harbor Interior Décor // The main bathroom features a vanity with a solid surface countertop and an integrated sink.



Rockport Cabinetry // Harbor Interior Décor // The bathroom has plenty of storage with maple hardwood cabinets.



Rockport Cabinetry // Harbor Interior Décor // The 2025 Verona LE comes pre-wired and plumbed for an optional washer/dryer.



Rockport Cabinetry // Harbor Interior Décor // The 2025 Verona LE gives you the driving power you need to safely get to your destination.



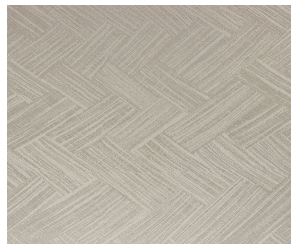
Rockport Cabinetry // Harbor Interior Décor // Make memories that will last a lifetime in this luxury Class C motorhome.



Charleston Décor



Backsplash



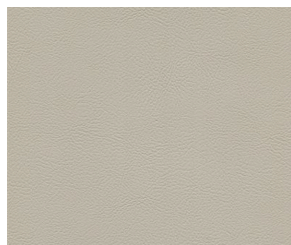
Bedsread



Countertop



Flooring



Furniture



Sofa Pillows



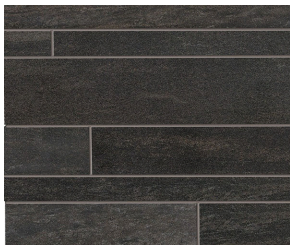
Valance Accent



Valance



Harbor Décor



Backsplash



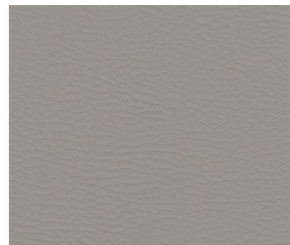
Bedsread



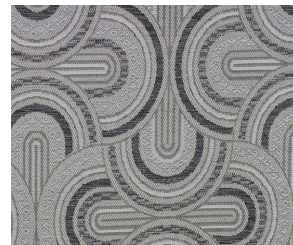
Countertop



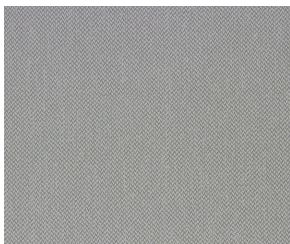
Flooring



Furniture



Sofa Pillows



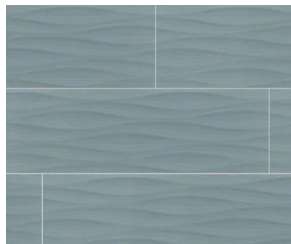
Valance Accent



Valance



Seabrooke Décor



Backsplash



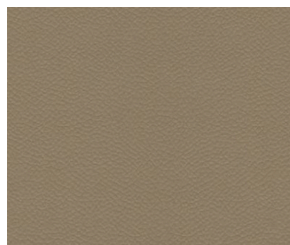
Bedspread



Countertop



Flooring



Furniture



Sofa Pillows



Valance Accent



Valance



Solid Wood Cabinetry Options



Cape Cod



Lakewood



Rockport

BUILT BY THE BOLD, FOR THE BOLD

We became one of the world's top motorhome brands by building extraordinary coaches. We remain the industry rebels by continuously challenging the status quo in terms of quality, value, power, versatility, durability and style. Starting with the best chassis, and ending with a motorhome that outperforms and outlasts - Renegade RVs are designed for extreme luxury and extreme adventure. Renegade RVs are built for you.

STANDARDS & OPTIONS

CHASSIS AND CAB

- Freightliner® M2-106 Plus
 - Cummins® L9 Engine with 360HP, 1150 lb. ft. Torque
 - 37,600 lbs GVWR
 - Allison® 3200 TRV Electronic 6-Speed Transmission
 - 20,000 lbs Towing Capacity
 - Dual 50-Gallon Aluminum Fuel Tanks (100-Gallon Total Capacity)
 - 6-Gallon DEF Tank
 - 4-Wheel Disc Brakes
 - Polished Aluminum Wheels with Center Caps
 - Airliner® Rear Air Suspension
 - Garmin® Touch Screen, Bluetooth, GPS, RV Maps, and Color Camera Monitor
 - Rear and Side View Cameras
 - Upgraded Cab Sound System
 - JBL® 5.25" Dash
 - 6.25" Ceiling Speakers
 - Premium Freightliner® Sound and Thermal Insulation Package
 - LED Headlight Assemblies
 - Power Windows and Door Locks
 - Power/Heated Remote-Control Mirrors
 - Air Ride Driver and Passenger Seat Pedestals with Swivels
 - Soft Touch Driver/Passenger Seats with Armrests
 - Full Cab Mat
 - Auxiliary Air Chuck and Hose
 - Freightliner® Safety Assurance Package:
 - Lane Guidance
 - Electronic Stability Control
 - Collision Mitigation
-

EXTERIOR FEATURES

- Aerodynamic Fiberglass Front and Rear Caps, Transition, Fenders, and Cab Steps
 - Four-Point Hydraulic Leveling System with App
 - Lighted Exterior Entry Door Assist Handle
 - Keyless Entry
 - Powered Folding Double-Entry Steps
 - (7) Colorway Paint Options
 - Roof-Mounted Girard® 2-Stage Lateral Arm Awning with LED Lights with End Caps
 - Slide Toppers with Covers
 - Frameless Dual-Pane Tinted Windows with Screens
 - Power Locking, Side-Swing Aluminum Compartment Doors with Single Handle Paddle Latches and Double Catch
 - Steel Storage Compartments with Carpeted Lining
 - Diamond Shield® Nano-Fusion™ Paint Protection (Front Mask)
 - Full-Width Rock Guard Mud Flap
-

CONSTRUCTION

- 2" Vacuum Laminated Sidewalls with Welded Aluminum Framing
 - 1.5" High-Density Foam Insulation in Sidewalls and Roof
 - Welded Aluminum Roof Truss System with Framed Wall Cutouts
 - "Super Sandwich" Floor Construction with Composite Underbelly Includes:
 - 2" Welded Steel Floor Joist System Mounted to 3" Steel Longitudinal Floor Beams
 - 3/4" Fir Plywood Deck Over 2 x 4 Wood-Framed Residential Floor with Thermal and Sound-Deadening Insulation
-

PLUMBING SYSTEMS

- 150 Gallon Fresh Water Tank
 - 75 Gallon Gray Tank
 - 75 Gallon Black Tank
 - See-Level® Tank Monitoring system
 - Full Maintenance Wet Bay
 - Black Tank Flush System
 - Fresh Water Fill - City Water Hookup
 - Outside Faucet with Sprayer
 - On-Demand Water Pump
 - Whole House Water Filtration System
-

INTERIOR FEATURES

- (3) Interior Décor Options
 - Décor Coordinating Fabric Valances
 - Double Roller Day/Night Shades (Manual)
 - Decorative Wallboard with Coordinating Accent in Slideouts
 - 12" x 24" Porcelain Tile Flooring Throughout
 - Maple Hardwood Cabinetry
 - 3-Wood Stain Color Options, 2-Finish Options
 - Dovetail Drawers on Soft Closing Slides
 - Framed Doors on Hidden Hinges
 - Pantry
 - Hardwood Slide Fascia with Lighting
 - Satin Nickel Door Hardware
 - Satin Nickel Kitchen Faucet
 - Solid Surface Countertops Throughout
 - Rectangular Single Bowl Undermount Kitchen Sink with Cover
 - Accent Lighting at Toe Kicks
 - Grouted Tile Backsplash
 - LED Dimmable Lighting
 - Memory Foam Mattress
 - Ultra Soft Touch Vinyl Furniture Upholstery
 - Convertible Booth Dinette with Storage
 - Mini Booth Dinette with Storage
 - Sofa Sleeper, Hide-a-Bed
 - Loveseat with Storage (4OLTS Only)
 - Aerocap with Storage Cabinet
-

BATH

- Maple Hardwood Vanity, Medicine, and Linen Storage Cabinets
 - LED Vanity Light
 - Deluxe Satin Nickel Bath Faucet and Adjustable Showerhead
 - Satin Nickel Towel Bar, Towel Ring, and Toilet Paper Holder
 - Porcelain Macerator Toilet with Push Button Flush
 - Solid Surface Countertop with Integrated Sink
 - Wavy Patterned Fiberglass Shower with Glass Door
 - Skylight Over Shower
-

APPLIANCES

- 18 cu. ft. French Door Residential Refrigerator with Stainless-Steel Doors
 - Recessed 2-Burner Induction Cooktop with Polished Solid Surface Covers
 - 1.7 cu. ft. Stainless-Steel Convection Microwave Oven
 - Aqua-Hot® 450D Hydronic Water and Zone Heating System
 - (2) 15,000 BTU Roof A/C with Heat Pumps and Plumbed Condensation Lines
 - Ducted Air Conditioning
 - MaxxAir® Power Vents
 - Central Vacuum System
 - Pre-Wired and Plumbed for Optional Washer/Dryer
 - Carbon Monoxide, LP and Smoke Detectors, and Fire Extinguisher
-

ELECTRICAL SYSTEMS

- 8KW Onan® Quiet Diesel Generator
 - Automatic Generator Start System
 - 50-Amp Electrical Panel
 - 3,000W True Sine Wave Inverter
 - Transfer Switch with Surge Protection
 - (2) 330Ah AGM House Battery
 - (3) 200W Solar Panels
 - Multiplex Control System with Wi-Fi App Control
 - USB/USB-C Charging in Living Area, Bedroom, Kitchen, and Bunk Areas
 - 50-Amp Power Retractable Shore Cord Reel
 - 12V Holding Tank Heaters, Gray and Black Tanks
-

ENTERTAINMENT SYSTEMS

- 50" 4K Smart LED TV in Living Area
 - Soundbar Home Theater with Bluetooth Streaming and Wireless Subwoofer in Living Area
 - 32" 4K Smart LED TV in the Bedroom
 - Exterior Entertainment Center
 - 43" Smart LED TV on Swivel
 - Soundbar with Bluetooth Streaming
 - USB Charging
 - Winegard® Connect 2.0 Rooftop OTA Antenna with Wi-Fi and 4G Ready (SIM Card Req.)
 - Prewire for Winegard® Trav'ler Stationary HD Satellite System
-

POPULAR OPTIONS

- Powered Reclining Theater Seat ILO Standard Sofa
 - Floor Heat Throughout
 - Cabover Bunk with Window, Power Shade, and 24" Smart LED TV
 - Starlink® Flat High-Performance with Wedge Mount (N/A with HD Trav'ler Pro)
 - Requires Wi-Fi Ranger® Converge™ HD Rooftop Antenna ILO Winegard® Connect 5G
 - Winegard® In-Motion Satellite System
 - Winegard® Trav'ler Stationary HD Satellite System (N/A with Starlink®)
 - Add Up to 1 More 200W Solar Panel (Quantity Varies by Floorplan and Options)
 - (2) 270Ah High-Capacity Lithium Batteries ILO AGM Batteries
 - Additional 270Ah High-Capacity Lithium Battery (Limit 1)
 - Additional 3000W True Sine Wave Inverter with Forward A/C Connected
 - American Racing Wheels® Upgrade
 - Caliber 9® Grille Package (Available in Chrome or Black)
 - Washer and Dryer Stack
 - Premium Exterior Refrigerator/Freezer on Slide Tray
 - Holding Tank Sewage Macerator System
-

	38LDG	40LRB 40LTS
Overall Length	37' 6"	39' 6"
Exterior Width	99.25"	99.25"
Wheelbase	285"	309"
Overall Exterior Height	12' 10"	12' 10"
Interior Height	84"	84"
Fuel Capacity	100 Gallons	100 Gallons
Fresh Water	150 Gallons	150 Gallons
Gray Water	75 Gallons	75 Gallons
Black Water	75 Gallons	75 Gallons

THE RENEGADE RV WARRANTY

New Renegade motorhomes are covered by a 1-year unlimited miles limited warranty, plus a 3-year 36,000-mile limited structural warranty.

All Renegade motorhome chassis, engines and transmissions, and drivetrain warranties are provided and administered by their respective manufacturers.

For specific information about these warranties, [ask your dealer](#) or [contact Renegade RV](#).

