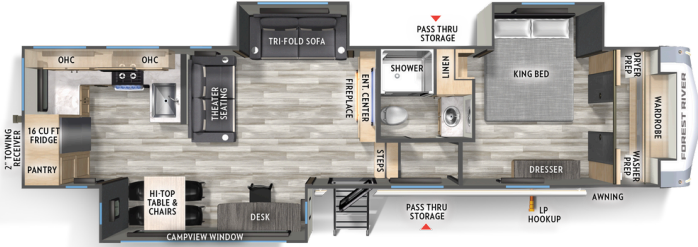


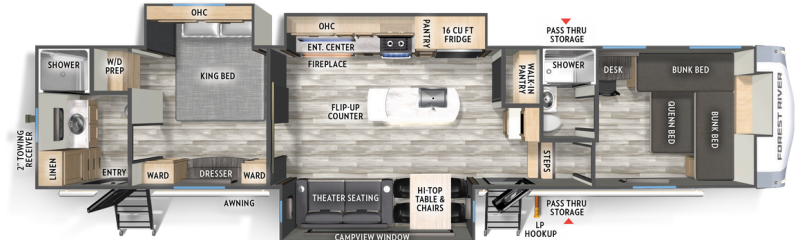
**32LIVE** \*HITCH: 1,935 \*GWR: 13,935 \*UW: 10,363 CCC: 3,572 \*\*LENGTH: 36' 6"  
EXT. HEIGHT: 13' 3" \*WIDTH: 96" †TANKS (F/B/G): 60 38 38 AWNINGS: 15' & 11'



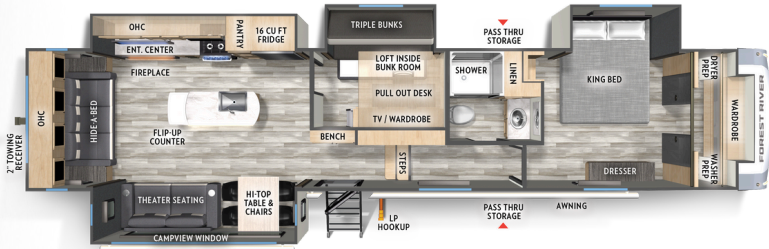
**33CHEF** \*HITCH: 1,885 \*GWR: 13,885 \*UW: 10,558 CCC: 3,327 \*\*LENGTH: 38' 3"  
EXT. HEIGHT: 13' 3" \*WIDTH: 96" †TANKS (F/B/G): 60 38 76 AWNINGS: 15' & 11'



**35FL** \*HITCH: 2,115 \*GWR: 14,115 \*UW: 10,708 CCC: 3,407 \*\*LENGTH: 43' 5"  
EXT. HEIGHT: 13' 2" \*WIDTH: 96" †TANKS (F/B/G): 60 38 76 AWNING: 15'



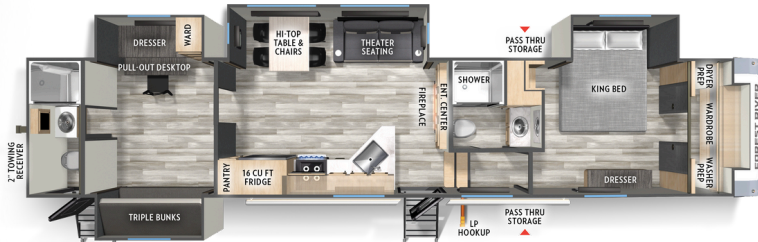
**35FUN** \*HITCH: 2,135 \*GWR: 14,135 \*UW: 11,913 CCC: 2,222 \*\*LENGTH: 42' 7"  
EXT. HEIGHT: TBD \*WIDTH: 96" †TANKS (F/B/G): 50 76 46 AWNINGS: 13' & 12'



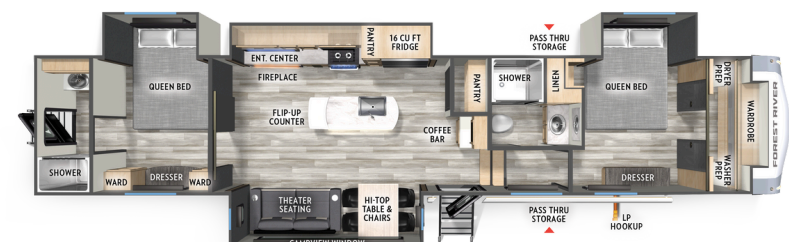
**36MB** \*HITCH: 2,335 \*GWR: 14,335 \*UW: 11,538 CCC: 2,797 \*\*LENGTH: 42' 7"  
EXT. HEIGHT: 13' 2" \*WIDTH: 96" †TANKS (F/B/G): 60 45 45 AWNINGS: 19' & 11'



**37BEST** \*HITCH: 2,210 \*GWR: 15,498 \*UW: 12,698 CCC: 2,800 \*\*LENGTH: 43' 7"  
EXT. HEIGHT: TBD \*WIDTH: 96" †TANKS (F/B/G): 50 76 76 AWNING: 15'



**41DREAM** \*HITCH: 2,150 \*GWR: 14,908 \*UW: 12,208 CCC: 2,700 \*\*LENGTH: 43' 3"  
EXT. HEIGHT: 13' 6" \*WIDTH: 96" †TANKS (F/B/G): 60 76 114 AWNING: 19'



**402BEDS** \*HITCH: 2,175 \*GWR: 14,800 \*UW: 12,353 CCC: 2,447 \*\*LENGTH: 42' 3"  
EXT. HEIGHT: TBD \*WIDTH: 96" †TANKS (F/B/G): 60 76 76 AWNINGS: 10.5' & 14'



# STANDARDS & OPTIONS

## CLIMATE PACKAGE

- Vacuum Bonded, Welded Aluminum Structure
- Best-In-Class Size, High Efficiency 35,000 BTU Furnace
- 12V Tank Heaters
- 18,000 BTU Ducted A/C System w/ Second & Third A/C Prep
- 60,000 BTU On Demand Tankless Water Heater
- Dual Roof Vents For Breathable Attic
- Electric Fireplace w/ Thermostat Control & Remote
- PVC Roof Membrane w/ Lifetime Warranty
- 4'X6' Sectioned ABS Plastic Underbelly Armor

- 50 Amp Service
- Dual 20 lb. LP Tanks
- Sidewalls: 2" High Density Block Foam Insulation
- Roof: Residential Fiberglass Insulation
- Floor: Residential Fiberglass Insulation w/ 5/8" Tongue & Groove Plywood

## EXPEDITION PACKAGE

- 4 Point Auto-Level
- 21" 2-in-1 Oven Range
- 30" OTR Microwave
- 16 Cu. Ft. 12V Refrigerator
- Residential Backsplash

- 50+ Gallon Fresh Water Capacity
- Hi-Top Free Standing Dinette w/ 4 Chairs
- Designer Roller Shades
- Two Power Awnings (Most Models)
- Heavy Duty Slam Latch Baggage Doors
- Motion Lighting Throughout
- 2" Towing Receiver w/ 4-Way Plug (Most Models)
- King/Queen Size Bed(s)
- Extra Large Pass-Through Storage
- "Easy Clean" Floors
- Extra Wide Entry Steps
- Flush Floor, Linoleum Galley Slide-Out
- Battery Disconnect Switch

- "On The Go" Rear Ladder Prep
- Reverse Camera Prep
- Hot/Cold Outdoor Shower
- LP Quick Connect
- Tinted Windows

## OPTIONS

- 2nd & 3rd 13,500 BTU A/C's
- 200W Solar Panel w/ 30 AMP Controller
- CampView Window - Mandatory Option (32LIVE, 33CHEF, 35FUN, 36MB, 402BEDS)



36MB



35FL



35FUN

## EACH NEW FOREST RIVER PURCHASE PROVIDES:

- ✔ Pre-delivery Inspection.
- ✔ Digital Owner's Manual.
- ✔ Free Membership to Forest River Owners Group (FROG). Learn more at [www.forestriverfrog.com](http://www.forestriverfrog.com).
- ✔ A Contribution to Care Camps Foundation [www.carecamps.org](http://www.carecamps.org).
- ✔ 1 Year Free Roadside Assistance from Date of Purchase.



## SPEC DEFINITIONS:

Scan on your smartphone to learn RV terminology and more!



## LEARN MORE:

Scan this QR code with your mobile device to learn more about Forest River.



YOUR CARDINAL DEALER