

BLACKTHORN

FIFTH WHEELS

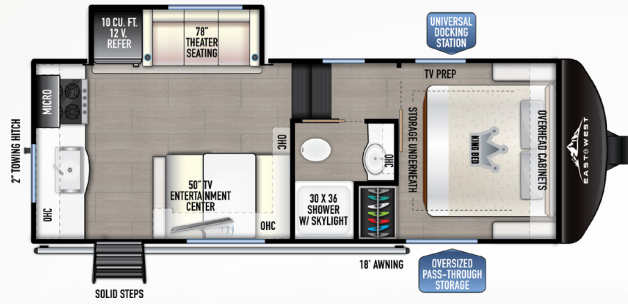
2025 FLOOR PLAN GUIDE



EastToWestRV.com/Blackthorn
A DIVISION OF FOREST RIVER



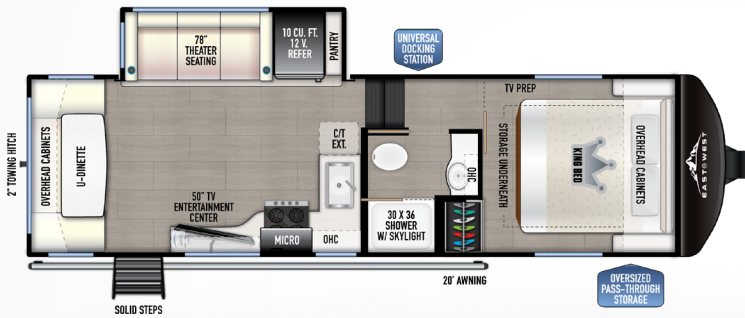
BLACKTHORN HALF-TON FIFTH WHEELS



22RK

REAR KITCHEN SINGLE SLIDE

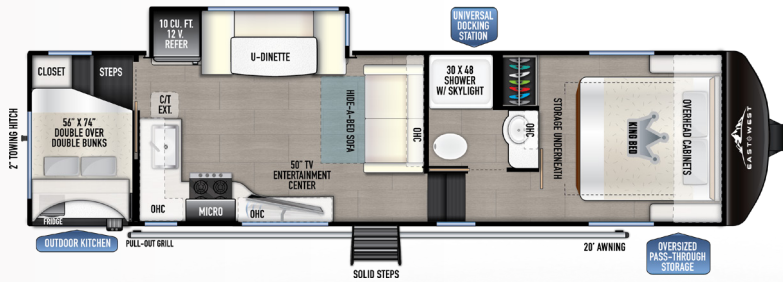
HITCH (LBS.): 1,170 U/VW (LBS.): 7,724 CCC (LBS.): 3,616
 LENGTH: 27' 3" EXTERIOR HEIGHT: 12'-5" WIDTH: 96"
 TANKS (F/G/B): 64 / 88 / 44 AWNING: 18'



26RD

REAR DEN SINGLE SLIDE

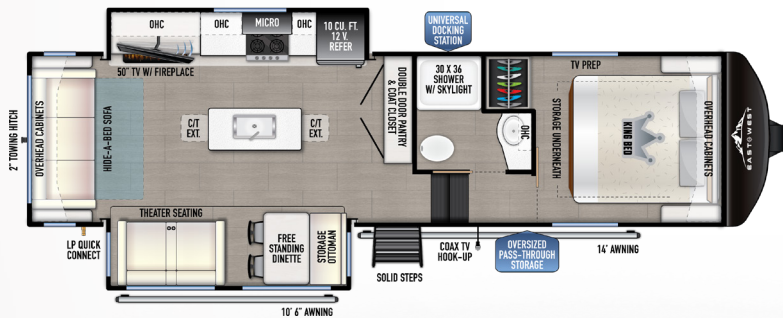
HITCH (LBS.): 1,235 U/VW (LBS.): 8,024 CCC (LBS.): 3,621
 LENGTH: 29' 9" EXTERIOR HEIGHT: 12'-8" WIDTH: 96"
 TANKS (F/G/B): 64 / 84 / 44 AWNING: 20'



27BH-OK

BUNK HOUSE W/ OUTDOOR KITCHEN

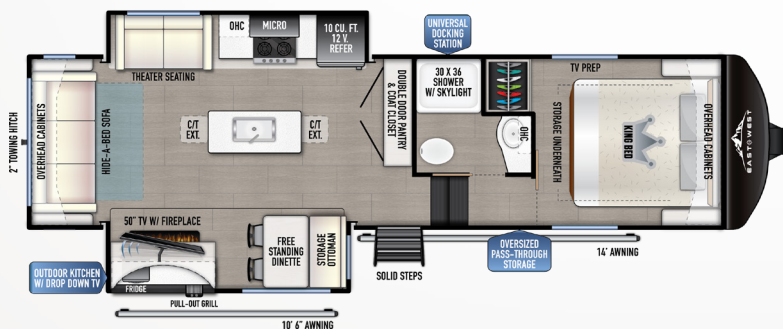
HITCH (LBS.): 1,360 U/VW (LBS.): 8,834 CCC (LBS.): 4,526
 LENGTH: 33' 2" EXTERIOR HEIGHT: 12'-6" WIDTH: 96"
 TANKS (F/G/B): 64 / 88 / 44 AWNING: 20'



28RL

REAR LOUNGE DOUBLE SLIDE

HITCH (LBS.): 1,590 U/VW (LBS.): 9,414 CCC (LBS.): 2,376
 LENGTH: 33' 2" EXTERIOR HEIGHT: 12'-9" WIDTH: 96"
 TANKS (F/G/B): 64 / 71 / 44 AWNING: 10'6 & 14'

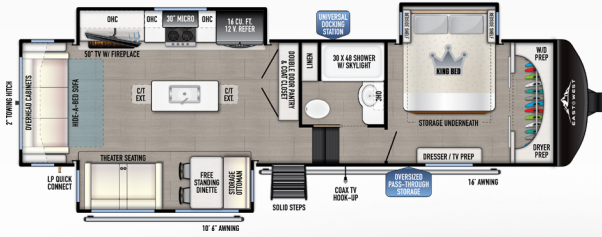


28RL-OK

REAR LOUNGE W/ OUTDOOR KITCHEN

HITCH (LBS.): 1,520 U/VW (LBS.): 9,639 CCC (LBS.): 2,081
 LENGTH: 33' 2" EXTERIOR HEIGHT: 12'-9" WIDTH: 96"
 TANKS (F/G/B): 64 / 71 / 44 AWNING: 10'6 & 14'

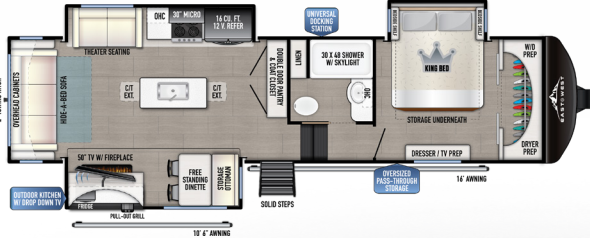
BLACKTHORN PREMIUM FIFTH WHEELS



3100RL

REAR LOUNGE TRIPLE SLIDE

HITCH (LBS.): 2,125 U/VW (LBS.): 10,525 CCC (LBS.): 3,541
 LENGTH: 35' 4" EXTERIOR HEIGHT: 13' 2" WIDTH: 96"
 TANKS (F/G/B): 64 / 88 / 44 AWNING: 10'6" & 16'



3101RL-OK

REAR LOUNGE TRIPLE SLIDE W/ OUTDOOR KITCHEN

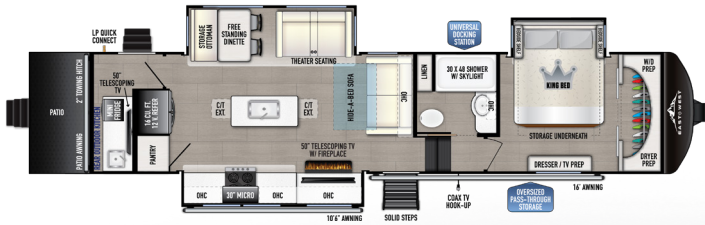
HITCH (LBS.): 2,040 U/VW (LBS.): 11,239 CCC (LBS.): 2,801
 LENGTH: 35' 4" EXTERIOR HEIGHT: 13' 2" WIDTH: 96"
 TANKS (F/G/B): 64 / 88 / 44 AWNING: 10'6" & 16'



3300RD

REAR DEN TRIPLE SLIDE

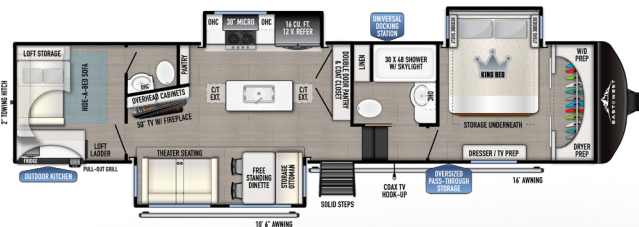
HITCH (LBS.): 1,980 U/VW (LBS.): 11,219 CCC (LBS.): 2,761
 LENGTH: 37' 7" EXTERIOR HEIGHT: 13' 2" WIDTH: 96"
 TANKS (F/G/B): 64 / 88 / 44 AWNING: 20'



3400R-OK

REAR OUTDOOR KITCHEN

HITCH (LBS.): 2,645 U/VW (LBS.): 12,594 CCC (LBS.): 3,566
 LENGTH: 38' 10" EXTERIOR HEIGHT: 13' 4" WIDTH: 96"
 TANKS (F/G/B): 64 / 88 / 44 AWNING: 10'6" & 16'



3700BH-OK

BUNK HOUSE HALF BATH & OUTDOOR KITCHEN

HITCH (LBS.): 2,645 U/VW (LBS.): 12,584 CCC (LBS.): 4,061
 LENGTH: 40' EXTERIOR HEIGHT: 13' 4" WIDTH: 96"
 TANKS (F/G/B): 64 / 88 / 88 AWNING: 10'6" & 16'



3800MB

MID-BUNK ROOM W/ DOOR SIDE WINDOWS

HITCH (LBS.): 2,270 U/VW (LBS.): 12,984 CCC (LBS.): 3,286
 LENGTH: 41' 3" EXTERIOR HEIGHT: 13' 4" WIDTH: 96"
 TANKS (F/G/B): 64 / 88 / 44 AWNING: 10'6" & 20'



3801MB-OK

MID-BUNK ROOM W/ OUTDOOR KITCHEN

HITCH (LBS.): 2,215 U/VW (LBS.): 13,179 CCC (LBS.): 3,036
 LENGTH: 41' 3" EXTERIOR HEIGHT: 13' 4" WIDTH: 96"
 TANKS (F/G/B): 64 / 88 / 44 AWNING: 10'6" & 20'



TRAVEL TRAILERS



TOY HAULERS



FIFTH WHEELS



MOTORHOMES

EAST TO WEST TAKES PRIDE IN OUR FIVE GUIDING PRINCIPLES AND OUR CORPORATE PHILOSOPHY which focuses on people working together to create high quality, value-added products that deliver the ultimate RV experience.

Sustainable Manufacturing

An important objective to our strategy and operations is to implement economically sound manufacturing processes to reduce/ recycle waste & conserve energy and natural resources.

Corporate & Social Responsibility

We foster a business environment in which we focus on and practice:
 - Ethical Labor Practices
 - Teamwork
 - Philanthropy
 - Volunteering

Culture & Values

We are a forward thinking company committed to fostering a culture of teamwork. By being transparent, we encourage our employees to think outside the box and make a difference!

Quality & Construction

Our team takes pride in each unit we build. Our manufacturing standards and point to point inspections ensure each EAST TO WEST brand is built to the same quality specifications every time.

Our Commitment

We strive to provide the highest quality products at the best possible price to our customers. We invite you to be a part of the EAST TO WEST family and we look forward to exceeding your expectations!

WE ARE SENDING OUT **12.11.24** VERSIONS, ANYTHING EARLIER PLEASE DISCARD.

EACH NEW FOREST RIVER PURCHASE PROVIDES:

- ✔ Pre-delivery Inspection. ✔ Digital Owner's Manual.
- ✔ Free Membership to Forest River Owners Group (FROG).
Learn more at www.forestriverfrog.com.
- ✔ A Contribution to Care Camps Foundation www.carecamps.org.
- ✔ 1 Year Free Roadside Assistance from Date of Purchase.



LEARN MORE:

Scan this QR code with your mobile device to learn more about Forest River.



SPECIFICATION DEFINITIONS:

Scan this barcode using a QR reader on your smartphone to learn RV terminology and more!



YOUR **BLACKTHORN** DEALER

All information contained in this brochure is believed to be accurate at the time of publication. However, during any model year, it may be necessary to make changes to the manufacturing process of the units and information in this brochure. Your unit may differ from the information in this brochure due to any changes in the manufacturing process and equipment. Forest River, Inc. reserves the right to make all such changes without notice, including prices, colors, combinations, materials, equipment and specifications of any model as well as the addition of new models and the discontinuance of models shown in this brochure. Therefore, please consult with your Forest River dealer and confirm the availability of any materials, combinations, designs, or specifications that are meaningful to your purchase decision. © 2025 Alta, a Division of East to West, Inc., a Berkshire Hathaway Company. All Rights Reserved. Forest River, Inc. 01/25