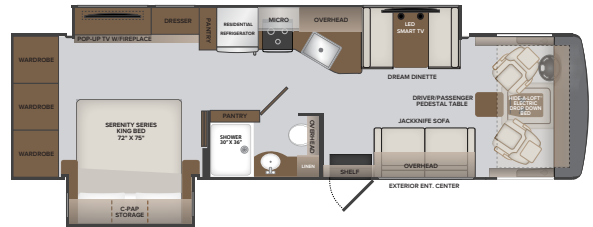




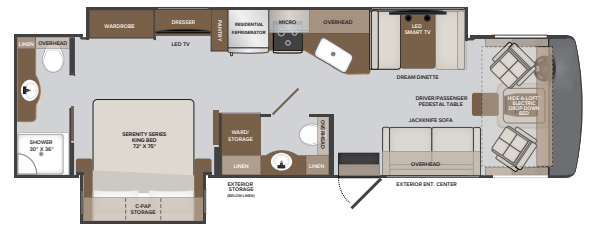
**TOP FEATURES**

- Ford 7.3L V8. (335 HP, 468ft.lb.)
- **AVS (Advanced Vehicle Safety)** (optional) system using the Ford Driver Assist Technology Package which includes adaptive cruise control and lane departure warning
- Standard full body paint
- 22K-26K chassis on 22.5" aluminum Alcoa wheels.
- Stackable or all in one combo washer & dryer available on all floorplans (optional)
- 100W solar panel comes as standard equipment providing a trickle charge to your (4) 6 volt house batteries
- Winegard 360+ W/4g Gateway, 5G Ready, And HD Antenna
- Adjustable; capacitive touch screen stereo; Apple Carplay™/ Android Auto™; built-in Bluetooth; SiriusXM-Ready (Requires Subscription); "Always On" back-up camera; 2 USB inputs; two-zone speaker control; push-to-talk button to access smart phone assistant
- Flat interior floor - no step up to cockpit area
- MultiPlex house controls that can be controlled by your smart phone or tablet
- Hand laid Tarkett flooring  
*Full composite tile eliminating the worry of your tile cracking or swelling.*
- 5.5kW generator with auto gen start and 2000W inverter
- 100 gallon fresh water tank
- Cavernous interior and exterior storage

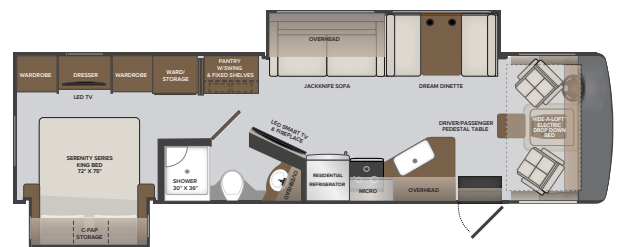
32RW



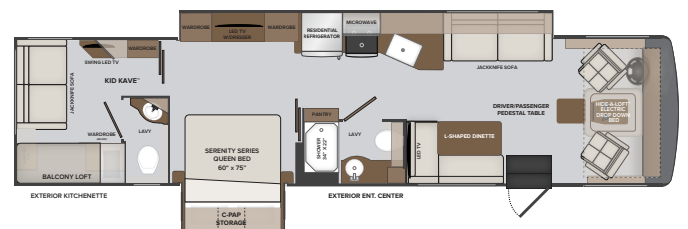
33HB



34MB



36Y

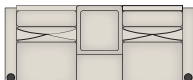


**AVAILABLE OPTIONS**

- Double Door Dometic 8 cu. Ft<sup>3</sup> LP Refrigerator
- Washer / Dryer All-In-One Combo
- Stackable Washer & Dryer (n/a on 36Y)
- Manual Theater Seating
- Collision Mitigation
- Dream Dinette (36Y)
- Power Driver's Seat
- King Stationary Satellite Universal System
- Roof Vent Covers
- Sumo Springs®
- Steering Stabilizer System
- Liquid Spring Suspension
- Dual Glazed Windows



OPT. 126  
W/D ALL IN  
ONE COMBO



OPT. 194  
MANUAL THEATER  
SEATING



OPT. 630  
DREAM DINETTE

**2025**  
MODEL YEAR

CLASS A GAS  
**INVICTA**

**HR** HOLIDAY RAMBLER  
holidayrambler.com

**32RW | 33HB | 34MB | 36Y**

**AUBURN**



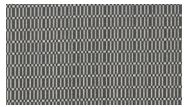
SOFA



LIVING ACCENT



BEDDING



VALANCE



BACKSPASH



COUNTERTOP



FLOORING

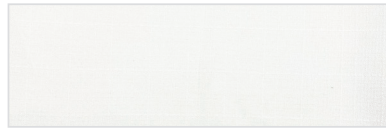
**COTTAGE**



SOFA



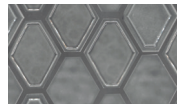
LIVING ACCENT



BEDDING



VALANCE



BACKSPASH



COUNTERTOP

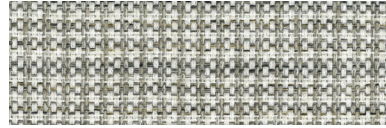


FLOORING

**CUMBERLAND**



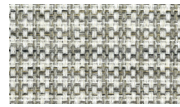
SOFA



LIVING ACCENT



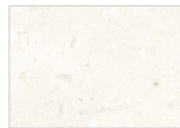
BEDDING



VALANCE



BACKSPASH



COUNTERTOP



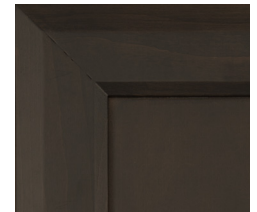
FLOORING



FOSSIL



URBAN CAFÉ



GUINNESS

**CHASSIS**

MODEL	32RW	33HB	34MB	36Y
Wheelbase	228"	228"	242"	242"
Front GAWR (lbs)	8,000	8,000	8,000	9,000
Rear GAWR (lbs)	15,000	15,000	15,000	17,500
GCWR (lbs)	26,000	26,000	26,000	30,000
Hitch Rating Weight (lbs)	8,000	8,000	8,000	8,000
Tongue Weight (lbs)	800	800	800	800
Fuel Capacity (gal)	80	80	80	80

**FORD® CHASSIS**



Model: Ford®  
Engine: 7.3L Triton V8  
Transmission: Ford® 6-Speed, Automatic w/Overdrive  
Alternator: 210 Amp  
Torque: 468 lb.-ft. @ 3,750 RPM  
Horsepower: 335HP @ 3,750 RPM

**DIMENSIONS AND CAPACITIES**

MODEL	32RW	33HB	34MB	36Y
Overall Length	34' 6"	35' 3"	35' 9"	35' 9"
Overall Height	12' 10"	12' 10"	12' 10"	12' 10"
Overall Width*	100"	100"	100"	100"
Interior Height*	82"	82"	82"	82"
Interior Width*	96"	96"	96"	96"
Patio Awning Width	14'	14'	20'	20'
Interior Storage (cu. ft.)	153	152	128	128
Exterior Storage (cu. ft.)	138	145	134	134
Fresh Water Capacity (gal)	100	100	100	100
Grey Water Capacity (gal)	50	50	50	50
Black Water Capacity (gal)	50	50	50	50

\*Overall Width, Interior Height and Interior Width measured with slide-box in.

**EXTERIORS**



**MAGNUM**

NEW EXTERIOR MY2025



**MATTERHORN**

NEW EXTERIOR MY2025



**MAVERICK**

NEW EXTERIOR MY2025



**MOTION**

NEW EXTERIOR MY2025

**INVICTA**