

**Quailridge**  
By FOREST RIVER



**FOREST RIVER**

***Quailridge***

PARK MODELS

# Realize Your Dreams

1 You have been dreaming about it for years, and now the time has come. You are finally searching for that perfect getaway, the one you have always talked about. Look no further, you have found **Quailridge** by Forest River.



**Quailridge** will take you to the next chapter in your life, time to stop dreaming and start living with a park model that gives you everything you have been looking for. Welcome home, welcome to **Quailridge**.



**TOP LEFT:** Bedroom: Quailridge Bedroom shown in Designer Series Gray/Taupe

**TOP RIGHT:** Kitchen: Quailridge Kitchen shown in Designer Series Cherry/Moss

**BOTTOM LEFT:** Quailridge Bathroom shown in Designer Series Cherry/Moss with optional Premier Package

**BOTTOM RIGHT:** Loft: Quailridge 40FKL

# Premier Package



The Optional Quailridge Premier package is a value packed option making life more convenient and enjoyable. A 4k smart TV, Workstation Sink Central Vac System, Rainfall Shower System, Soft Close Drawer Guides and stylish Black Cabinet Hardware give you the ultimate in Style and Function in your vacation getaway.

**LEFT:** 4k HD smart tv with remote control, installed apps and streaming capable

**TOP:** Workstation sink featuring pull down sprayer, rainfall faucet, cup washer, soap dispenser, cutting board, and colander

**BOTTOM RIGHT:** Central vac system with 35' hose and accessory kit





**LEFT:** Soft close, full extension ball bearing drawer guides throughout

**RIGHT:** Rainfall shower with rain head, spray wand and body jets

**BOTTOM:** Black cabinet hardware on all cabinetry and interior doors as well as ceiling fan(s) where applicable



**FOREST  
RIVER**



# Home Customization: Designer Series Interiors

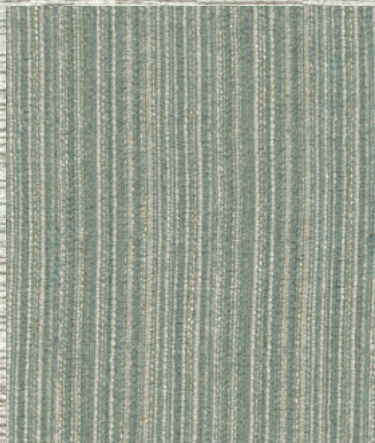


At Forest River Park Models we want to make sure that you are completely comfortable in your new Quailridge Park Model. We know the best way to do this is to give you the freedom to personalize your interior decor. You will have the option to choose from one of our 3 new Designer Series Interior packages featuring upgraded cabinetry, fabrics, shiplap feature walls in the bedroom and living room as well as solid surface countertops. These Designer Series Interiors were carefully coordinated by a professional interior designer with decades of experience. You are also free to create your own interior design by choosing from: 6 different fabric packages, 6 cabinet options, 7 countertop options, 3 main wallboards and 2 premium wallboard options as well as 3 flooring choices.

## Designer Series Interior Cherry / Moss



Oak Plank  
Flooring



Seafoam  
Fabric

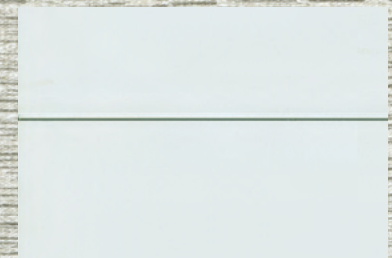


Linen Fabric



Cabinetry - Cherry / Moss

Patton Pine Wallboard



White Shiplap



Everafter Counter Top

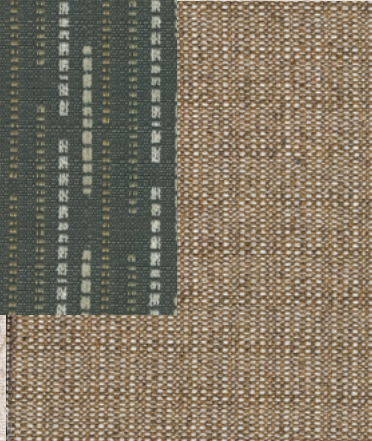
# Designer Series Interior Gray / Taupe



Driftwood  
Flooring



Charcoal  
Fabric



Latte Fabric



Cabinetry - Ferrous / Taupe

Empress Wallboard



Charcoal Shiplap



Everafter Counter Top

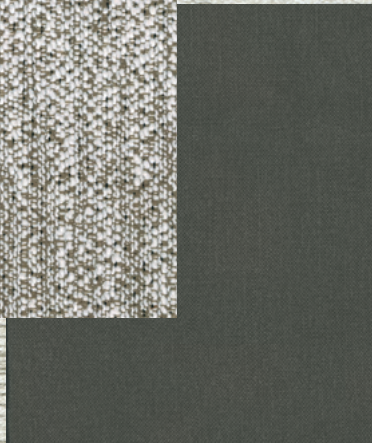
# Designer Series Interior White / Walnut



Driftwood  
Flooring



Mocha  
Fabric

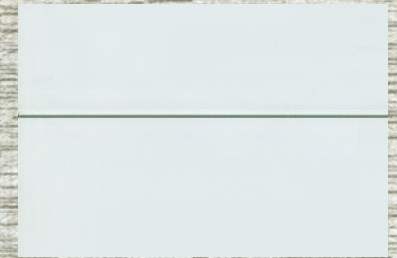


Vapor Fabric



Cabinetry - Walnut / White

Patton Pine Wallboard



White Shiplap

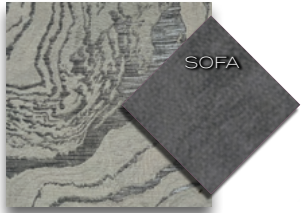


Icy Gray Counter Top

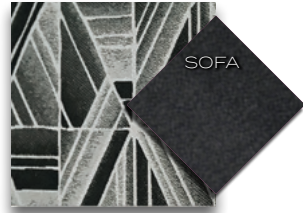
# PERSONAL HOME CUSTOMIZATION

At **Quailridge** we want to make sure you feel completely comfortable in your new home. We know the best way to do this is to allow you to personalize your home to suit your tastes. With six interior fabric decors and numerous other options we leave the decorating completely up to you. We stand behind our commitment to quality by offering Serta® products, a Forest River exclusive feature.

## FABRIC OPTIONS



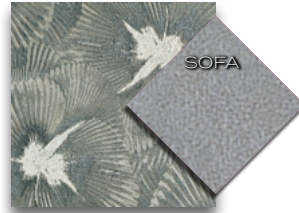
GRAPHITE



ONYX



PEBBLE



PEWTER



RAWHIDE



SEAPORT

## CABINETS



BUTTER RUM



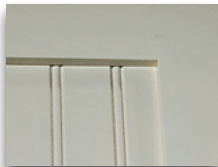
VAGABOND



VINTAGE MAPLE



ASH ICE  
(PREMIUM)

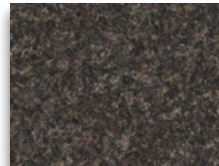


HARMONY WHITE  
(PREMIUM)

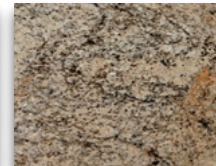


MAPLE SUN  
(PREMIUM)

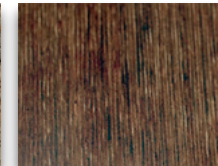
## COUNTERTOPS



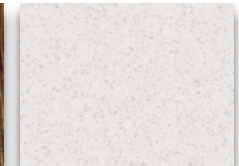
LABRADOR GRANITE



LAPIDUS



PEANUT BRITTLE



PALOMA POLAR



PYRENNES MANTLE



STAR DUNE



DOLCE VITA  
(PREMIUM)

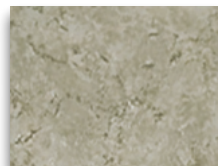
## WALLBOARDS



ASH WEAVE



EMPRESS



STARLIGHT PEWTER



CEDAR (Wall Panel/  
Ceiling) (PREMIUM)



WHITE BEADBOARD  
(Wainscott) (PREMIUM)

## FLOORING



HEARTWOOD



DRIFTWOOD PLANK  
(PREMIUM)



OAK PLANK  
(PREMIUM)

## CARPET



STINGRAY



## **EXTERIOR FEATURES**

- 10" Extruded Steel I-Beam Chassis
- Detachable Hitch
- Corrosion Resistant Metal Underbelly
- 2" x 6" Transverse Floor Joist 16" On Center
- 5/8" Tongue and Groove Plywood Decking
- Central Floor Ducted Heat
- R22 Floor Insulation
- 2" x 4" Sidewall & Endwall Studs 16" On Center
- R11 Sidewall Insulation
- 3/8" OSB Wall Sheathing
- House Type Vapor Barrier On All Ext. Walls
- 90" Sidewall Height
- Residential Thermopane Single Hung Windows
- Rear Door with Deadbolt and Screen (where applicable)
- Vinyl Siding with Limited Lifetime Warranty
- Residential Truss Rafters
- R22 Roof Insulation
- 30 Year Warranty Asphalt Shingles

## **LIVING AREA**

- Hide A Bed Sofa with Recliner
- Vertical Blind At Patio Door
- Designer Window Valances
- Entertainment Center with Cable Hook-Up
- Ceiling Fan with Light Kit
- Solid Wood End Table
- Platform Entertainment Center (Loft Models)

## **KITCHEN/DINING AREA**

- 18 Cu. Ft. Frost Free Refrigerator
- 30" Gas Range
- Spacemaker Over The Range Microwave Residential Cabinetry
- Laminated Countertop with Backsplash

- Full Extension Drawer Guides
- Deep Stainless Steel Sink with Pull Down Sprayer Faucet
- USB Port
- Hardwood Dinette Table with 4 Chairs
- Led Lighting
- Gfi Receptacles

## **BATH AREA**

- 1 Piece Fiberglass Tub/Shower with Curtain
- Residential Porcelain Elongated Toilet
- Power Exhaust Fan with Light
- Medicine Cabinet
- Linen Closet (where applicable)
- Large Vanity Sink
- Residential Style Bath Accessories
- Gfi Receptacle

## **BEDROOM AREA**

- 60 x 75 Serta Queen Mattress
- Oversized Wardrobe with Drawers
- Egress Window
- LED Lighting
- Residential Carpet and Padding
- Built In Nightstands (where applicable)

## **ADDITIONAL FEATURES**

- 50 Electrical Service with Power Cord
- 56,000 BTU Furnace with Electric Ignition N/A 355fl
- 20 Gal. Electric Water Heater
- LP and Smoke Detectors
- Fire Extinguisher
- Residential Rocker Light Switches
- Gypsum Ceiling Board with Crown Molding
- Exterior Porch Lights
- 2 Exterior Gfi Receptals
- Hurricane Tie Down Straps

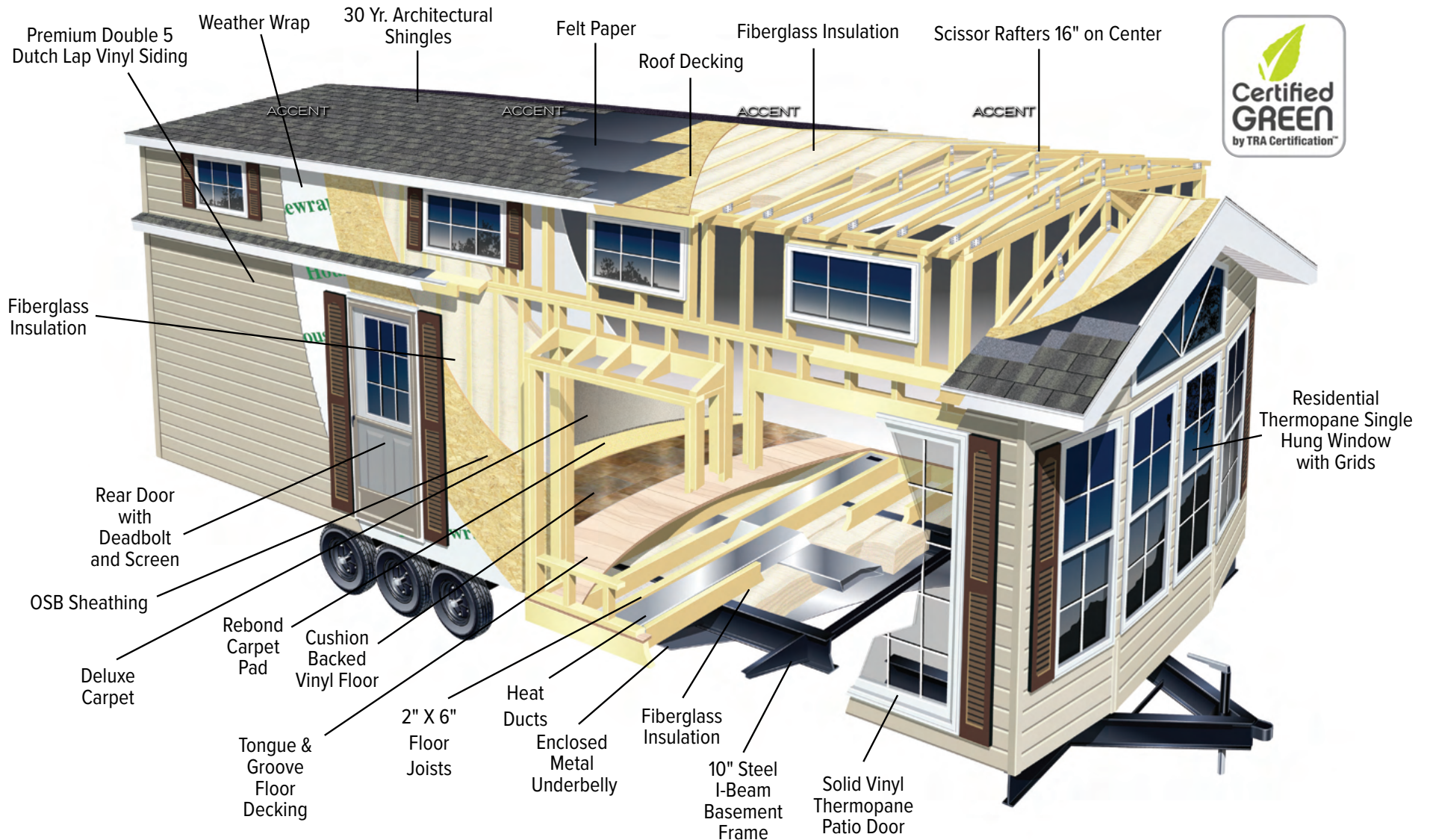
## **OPTIONAL FEATURES**

- Premium Vinyl Siding
- Barn Style Metal Roof
- Premium Upgrade Cabinetry
- Residential Upgrade Vinyl Flooring
- Additional Recliner
- Stainless Steel Appliances
- 18" Dishwasher (where applicable)
- Single Bowl Sink
- Icemaker Installed
- Washer/Dryer Prep (where applicable)
- Stackable Washer/Dryer (where applicable)
- Box Bay (where applicable)
- 40,000 BTU Rv Furnace Ipo 56k
- 13,500 BTU Floor Duct A/C
- 5,000 BTU Loft A/C (Loft Models Only)
- 16 Gal. Gas/Electric Wh IPO 20 Gal.
- Shower IPO Tub/Shower
- Shower Doors
- Electric Fireplace
- Lift Up Queen Bed with Storage
- Island w/ (4) 26" Contoured Bar Stools
- Bench Dinette with Storage (where applicable)
- Tall Loft (Loft Models Only)
- Pit Group IPO Hide A Bed and Recliner
- Cedar Panel Walls
- Cedar Panel Ceiling
- Premier Package
- Designer Series Interiors
- Stackable Washer/Dryer W/A
- Washer/Dryer Prep W/A

\* Denotes where available

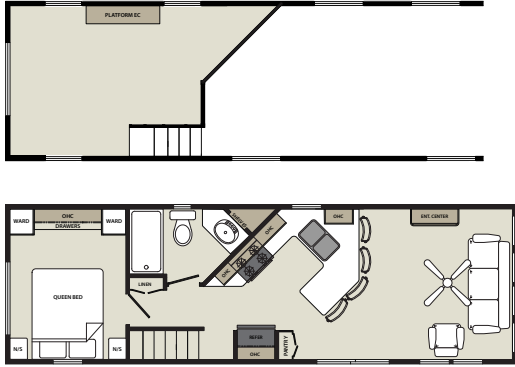
# FOREST RIVER PARK MODELS-BUILT FOR THE TIME OF YOUR LIFE

Quality is built into every park model at Forest River. Forest River's years of park model experience have taught us how to develop a product that is both well built and price competitive. Forest River incorporates production techniques and construction features into each and every quality built park model. You are making an investment, Forest River wants your investment to hold its value, and allow you a worry free leisurely lifestyle. Purchasing from a financially strong company is something you should feel good about. We are a part of Berkshire Hathaway and we are in this for the long haul.

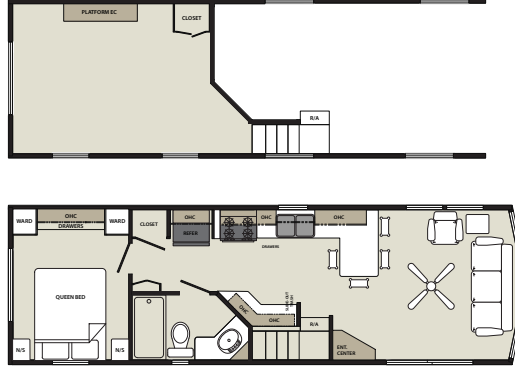


# FLOOR PLANS

39AKML



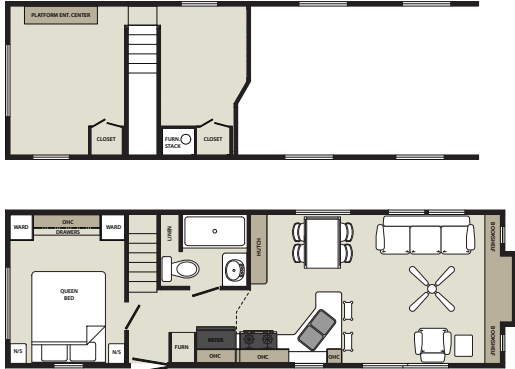
39ASL



39CBDL



39FLML



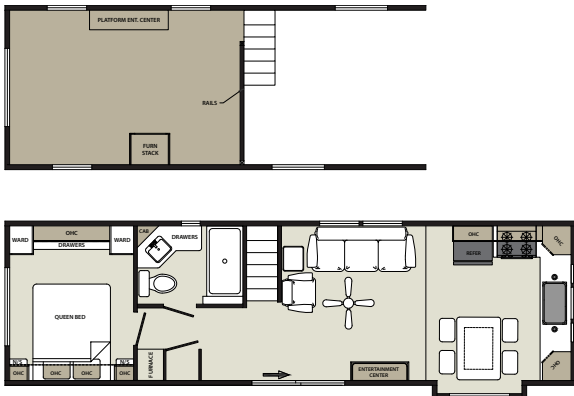
39FLSKL



39UKL



40FKL



40MFLD



All floor plans available in non-loft versions.



## Quailridge

Forest River, Inc. Park Model Division  
28936 Phillips St.  
Elkhart, IN 46514  
Phone: (574) 264-7163  
Fax: (574) 264-7364  
[www.forestriverinc.com](http://www.forestriverinc.com)  
[www.forestriveraccessories.com](http://www.forestriveraccessories.com)



**Learn More**  
Scan this barcode using  
a QR Reader on your  
smart phone to learn  
more about Forest River.



A Berkshire Hathaway company.

All specifications contained herein are based on the latest product information at time of printing. Forest River reserves the right to make changes in prices, colors, materials, equipment and specifications at any time without notice and assumes no responsibility for any errors in this brochure. Photographs in this brochure may show props and optional equipment.  
All units are shipped F.O.B. Elkhart, IN CONSULT YOU LOCAL DEALER FOR WARRANTY INFORMATION

© 2024- Quailridge - a division of Forest River Inc.  
A Berkshire Hathaway company