

COACHMEN
PRISM
SELECT

COACHMEN
PRISM
ELITE



KEY FEATURES

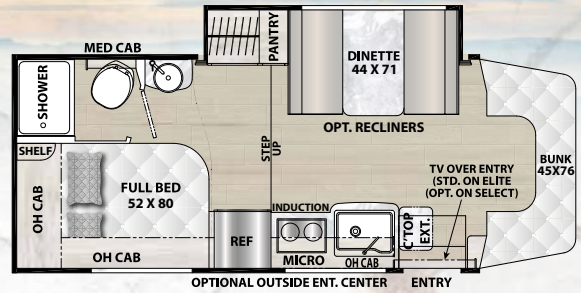
PRISM SELECT

1. 70lb. LP Tank
2. Molded Fiberglass Front Cap with Front Window with Built-In Power Shade
3. Azdel Substrate with Aluminum Framing. The Thickest Azdel in its Class Assuring Lifetime Integrity
4. Intelligent Voice Control System with Adaptive Cruise Control and Active Lane-Keeping Assist
5. Induction Cooktop
6. Convection Microwave
7. Tankless Water Heater

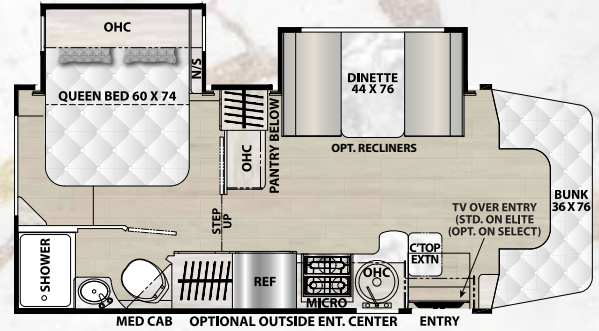
PRISM ELITE

1. Three Full Body Paint Options
2. Exterior Entertainment Center
3. Solid Surface Countertops
4. On-Demand Water Heater
5. 15K Low Profile A/C
6. Armless Awning with LED Light

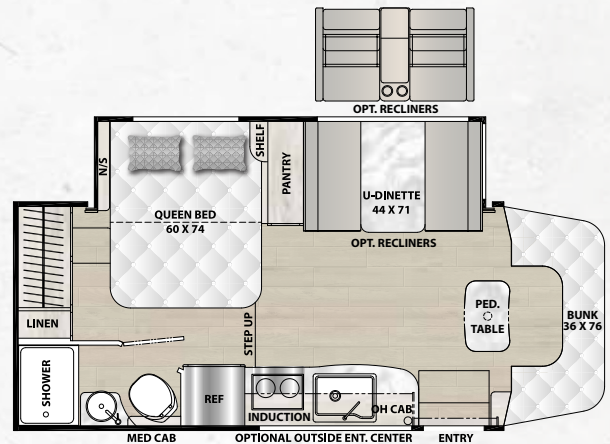
24CB



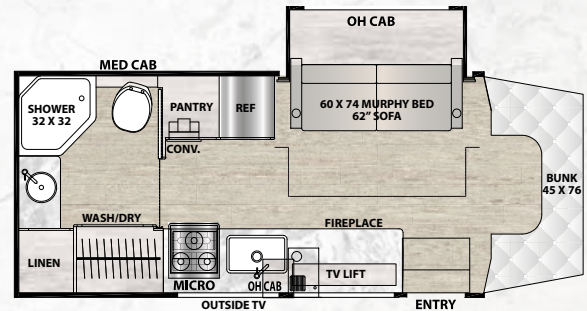
24DS



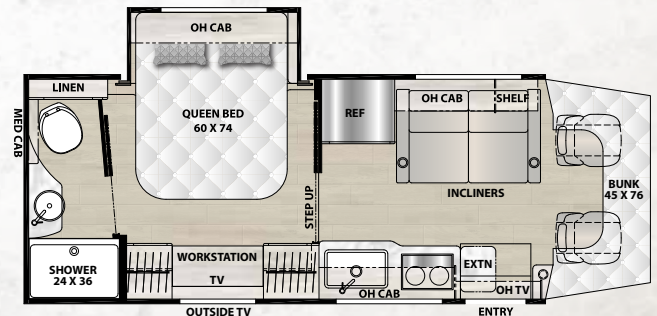
24FS



24MB



26RB



SPECIFICATIONS

	24CB	24DS	24FS	24MB	26RB
CHASSIS	3500 SPRINTER	3500 SPRINTER	3500 SPRINTER	3500 SPRINTER	3500 SPRINTER
ENGINE	4 CYL. DIESEL	4 CYL. DIESEL	4 CYL. DIESEL	4 CYL. DIESEL	4 CYL. DIESEL
HORSE POWER	208	208	208	208	208
TORQUE	322	322	322	322	322
WHEEL BASE	170"	170"	170"	170"	170"
GVWR (LBS.)	11,030	11,030	11,030	11,030	11,030
GCWR (LBS.)	15,250	15,250	15,250	15,250	15,250
UVW (APPROX. LBS.)	TBD	10,232	10,232	TBD	TBD
CCC (APPROX. LBS.)	TBD	798	798	TBD	TBD
GAWR FRONT (LBS.)	4,081	4,081	4,081	4,081	4,081
GAWR REAR (LBS.)	7,721	7,721	7,721	7,721	7,721
INTERIOR HEIGHT	6' 9"	6' 9"	6' 9"	6' 9"	6' 9"
EXTERIOR WIDTH	7' 8"	7' 8"	7' 8"	7' 8"	7' 8"
EXTERIOR HEIGHT (WITH A/C)	11' 7"	11' 7"	11' 7"	11' 7"	11' 7"
EXTERIOR LENGTH (WITH HITCH) (SELECT)	25' 2"	25' 2"	25' 2"	25' 2"	26' 2"
EXTERIOR LENGTH (WITH HITCH) (ELITE)	25'	25'	25'	25'	26'
HITCH WEIGHT (LBS.)	5,000	5,000	5,000	5,000	5,000
FUEL CAPACITY (GAL.)	26	26	26	26	26
LP CAPACITY (LBS.)	80	80	80	80	80
FRESH WATER CAPACITY (GAL.)	29	29	32	32	29
WATER HEATER CAPACITY (GAL.)	TANKLESS	TANKLESS	TANKLESS	TANKLESS	TANKLESS
GREY TANK CAPACITY (GAL.)	32	32	32	32	32
BLACK TANK CAPACITY (GAL.)	35	35	35	32	32
EXTERIOR STORAGE (CU. FT.)	46	37	37	34	34
AWNING LENGTH (SELECT)	14'	14'	14'	14'	14'
AWNING LENGTH (ELITE)	14' THULE	14' THULE	14' THULE	14'	14'

GVWR (Gross Vehicle Weight Rating) is the maximum permissible weight of the unit when fully loaded. It includes all weights, inclusive of all fluids, occupants, cargo, optional equipment and accessories. For safety and product performance do NOT exceed the GVWR.

GCWR (Gross Combined Weight Rating) is the maximum permissible loaded weight of your motor home and any towed trailer or towed vehicle. Actual GCWR of this vehicle may be limited by the sum of the GVWR and the installed hitch receiver maximum capacity rating; see hitch rating label for detail.

GAWR (Gross Axle Weight Rating) is the maximum permissible weight, including cargo, fluids, optional equipment and accessories that can be safely supported by each axle.

UVW (Unloaded Vehicle Weight)* is the typical weight of the unit as manufactured at the factory. It includes all weight at the unit's axle(s), including full fuel, all fluids and LP Gas. The UVW does not include cargo, fresh potable water, additional optional equipment or dealer installed accessories.

*Estimated Average based on standard build optional equipment.

CCC (Cargo Carrying Capacity)** is the amount of weight available for fresh potable water, cargo, passengers, additional optional equipment and accessories. CCC is equal to GVWR minus UVW. Available CCC should accommodate fresh potable water (8.3 lbs per gallon). Before filling the fresh water tank, empty the black and gray tanks to provide for more cargo capacity.

** Estimated average based on standard build optional equipment

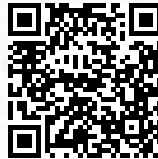
Each Coachmen motorhome is weighed at the manufacturing facility prior to shipping. A label identifying the unloaded vehicle weight of the actual unit and the cargo carrying capacity is applied to every Coachmen motorhome prior to leaving our facilities.

The load capacity of your unit is designated by weight, not by volume, so you cannot necessarily use all available space when loading your unit.

Actual towing capacity is dependent upon your particular loading and towing circumstances, which includes the GVWR, GAWR and GCWR as well as adequate trailer brakes. Please refer to the Operator's Manual of your vehicle for further towing information.



FREE MEMBERSHIP
www.coachmenowners.com



Download a virtual brochure at
www.coachmenrv.com

COACHMEN
PRISM

YOUR PRISM DEALER



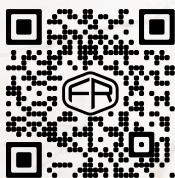
**24/7 EMERGENCY
ROADSIDE ASSISTANCE
WITH VEHICLE PURCHASE***

TOWING
JUMP STARTS
TIRE ASSISTANCE
DELIVERY OF FUEL &
EMERGENCY FLUIDS
LOCKSMITH/LOCKOUT
SERVICES

WINCH OUT
MOBILE TIRE SERVICE
TECHNICAL SUPPORT
RV MOBILE
MECHANIC
DEALER LOCATOR
SERVICES

SPECIALIZED
Customer Service
(800) 608-2751

*VALID FOR 1 YEAR FROM DATE OF PURCHASE



Learn More:

Scan this barcode using a QR reader on your smart phone to learn more about Forest River.



FOREST RIVER

A Berkshire Hathaway Company



COACHMEN

Coachmen RV, a Division of Forest River, Inc.,
A Berkshire Hathaway Company

423 N. Main St., P.O. Box 30, Middlebury, IN 46540

To learn more about Coachmen RV and our products and see how Coachmen is making the easy life easier, visit
www.coachmenrv.com

All information contained in this brochure is believed to be accurate at the time of publication. However, during the model year, it may be necessary to make revisions and Coachmen reserves the right to make all such changes without notice, including prices, colors, materials, equipment and specifications as well as the addition of new models and the discontinuance of models shown in this brochure. Therefore, please consult with your Coachmen dealer and confirm the existence of any materials, design or specifications that are material to your purchase decision. 08/24

©Copyright 2024 Coachmen RV a Division of Forest River Inc – All Rights Reserved.