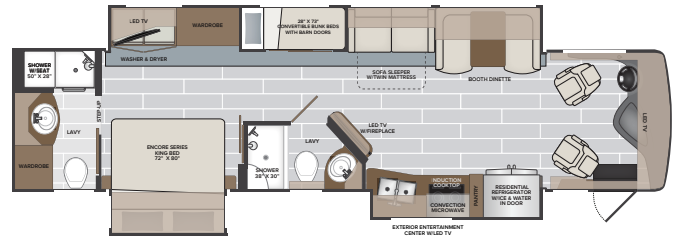




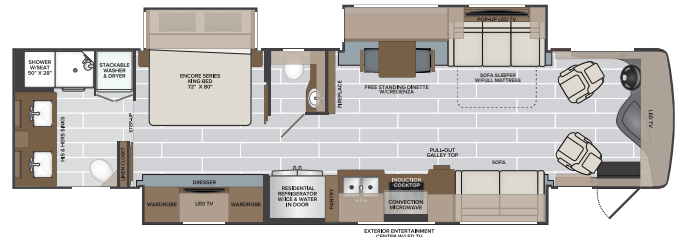
TOP FEATURES

- Titan Bridge®
- Molded Fiberglass Roof - sleek appearance, low maintenance and lasting durability
- Dual monitors in cockpit for easy viewing of cameras and navigation
- Fireplace, *All Floorplans*
- Firefly MultiPlex Wiring w/ Color Touchscreen
- Residential refrigerator, induction cook top, and convection microwave come as standard equipment.
- WiFi Extender Pro Pack w/LTE, Cell Booster, 330W Solar Panel, Collision Mitigation by Mobileye®, Firefly Eclipse Module - Enabling Remote Access Via App Control
- Polished Porcelain Tile Floor w/living area Heated-Standard
- Generous interior and exterior storage plus large holding tank capacities
- Aqua Hot 400D provides unlimited hot water and comfortable interior heat.

38N



38W

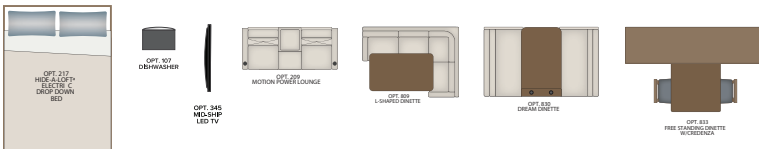


Freightliner® Custom Chassis Features

- XCM Chassis
- Cummins®, 6.7L, 360HP Engine
- V-Series Suspension System with the VFS Front Suspension
- V-Ride™ technology (*enhanced stability*)
- BrakeSync (*standard*)
- Tire Pressure Monitoring (*standard*)

AVAILABLE OPTIONS

- Dishwasher
- Power Passenger Seat w/ Power Footrest
- Motion Power Lounge w/ USB and Lighted Cupholders
- Hide-A-Loft™ Electric Drop Down Bed
- Mid-Ship LED TV (38W only)
- L-Shaped Dinette (38N only)
- Dream Dinette (38W only)
- Free Standing Dinette w/Credenza (38N only)
- Technology Package (WiFi Extender Pro Pack w/LTE, Cell Booster, 330W Solar Panel, Collision Mitigation by MobileEye, FireFly Eclipse Module - enabling remote access from app via WiFi)



2025
MODEL YEAR

CLASS A DIESEL
ENDEAVOR

HR HOLIDAY RAMBLER
holidayrambler.com

38N | 38W

BAYTOWN



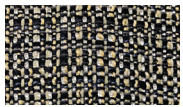
SOFA



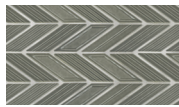
LIVING ACCENT



BEDDING



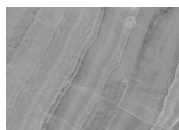
VALANCE



BACKSPASH



COUNTERTOP



FLOORING

RIVIERA



SOFA



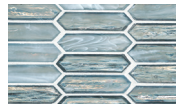
LIVING ACCENT



BEDDING



VALANCE



BACKSPASH



COUNTERTOP



FLOORING

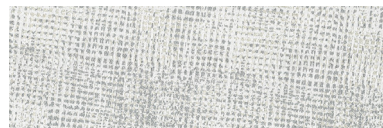
WATERFORD



SOFA



LIVING ACCENT



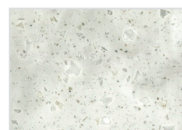
BEDDING



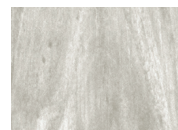
VALANCE



BACKSPASH



COUNTERTOP



FLOORING



SUMMIT ASH



URBAN CAFÉ



GUINNESS

CHASSIS

MODEL	38N	38W
Wheelbase	252"	263"
Front GAWR (lbs)	12,600	12,600
Rear GAWR (lbs)	21,000	21,000
GCWR (lbs)	43,600	43,600
Hitch Rating Weight (lbs)	10,000	10,000
Tongue Weight (lbs)	1,000	1,000
Fuel Capacity (gal)	100	100

TITAN BRIDGE®
Model: Freightliner® Custom Chassis - XCR
Engine: Cummins ISB 6.7L, 360HP
Transmission: Allison® 3000 MH 6-Speed
Alternator: Delco Remy 160 Amp
Torque: 800 lb.-ft.



DIMENSIONS AND CAPACITIES

MODEL	38N	38W
Overall Length	38' 8"	40' 1"
Overall Height	12' 10"	12' 10"
Overall Width*	102"	102"
Interior Height*	84"	84"
Interior Width*	96"	96"
Patio Awning Width	18'	18'
Interior Storage (cu. ft.)	148	132
Exterior Storage (cu. ft.)	127	142
Fresh Water Capacity (gal)	105	105
Grey Water Capacity (gal)	75	75
Black Water Capacity (gal)	50	50

*Overall Width, Interior Height and Interior Width measured with slide-box in.

EXTERIORS



ADMIRAL

NEW EXTERIOR MY2025



ALTITUDE

NEW EXTERIOR MY2025



HARBOR

NEW EXTERIOR MY2025



LATITUDE

NEW EXTERIOR MY2025



LONGITUDE

NEW EXTERIOR MY2025



SHORESIDE

NEW EXTERIOR MY2025