

2024 OVERLAND SERIES SINGLE AXLE

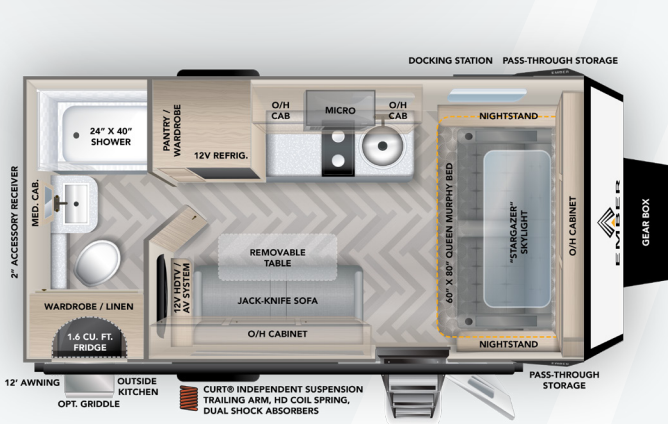


2024 OVERLAND SERIES TANDEM AXLE

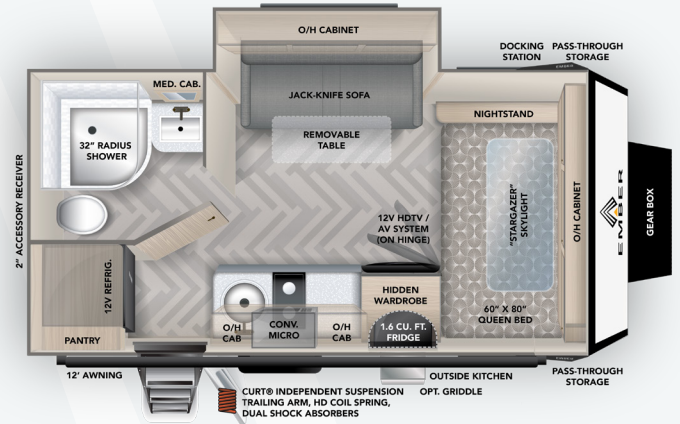




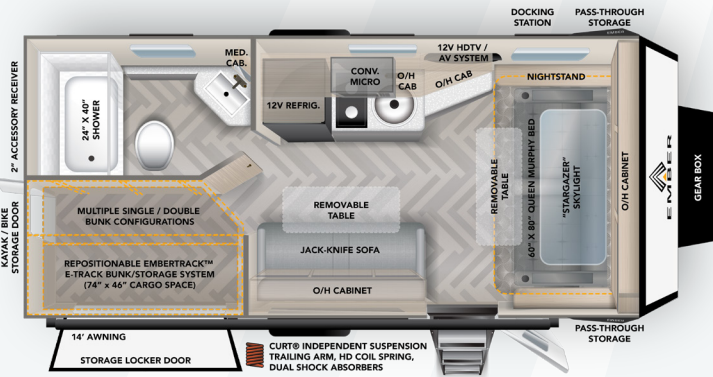
# 2024 OVERLAND SERIES



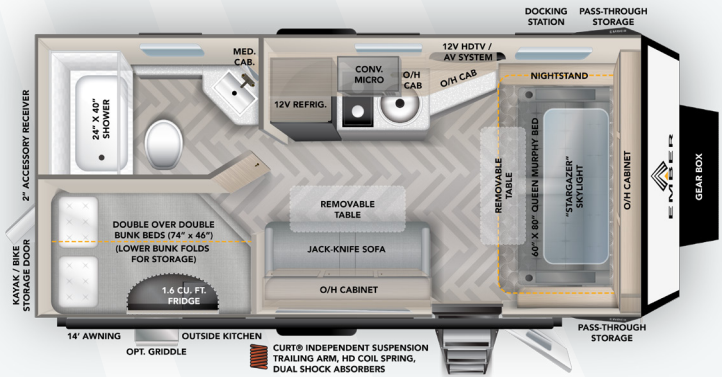
<b>170MRB</b>	LENGTH	HEIGHT	DRY WEIGHT	HITCH WEIGHT
	20'6"	10'6"	4,495 LBS	620 LBS



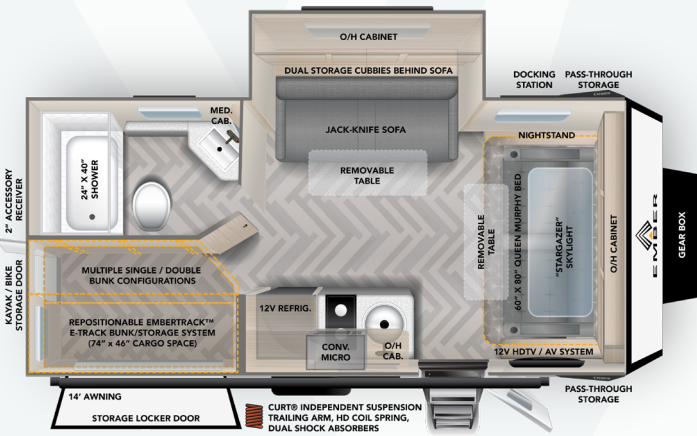
<b>171FB</b>	LENGTH	HEIGHT	DRY WEIGHT	HITCH WEIGHT
	20'6"	10'6"	4,610 LBS	635 LBS



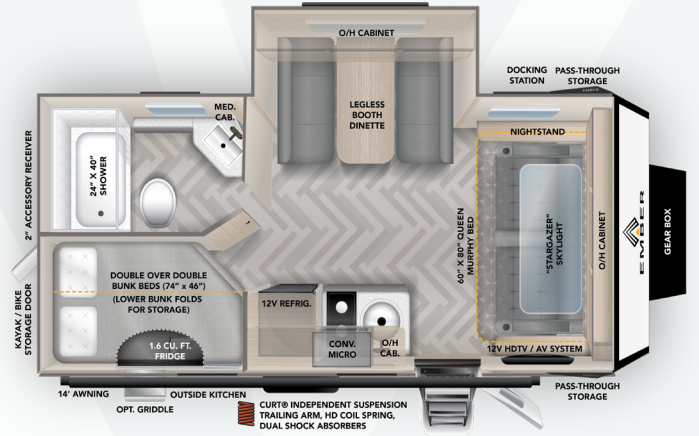
<b>190MSL</b>	LENGTH	HEIGHT	DRY WEIGHT	HITCH WEIGHT
	22'6"	10'6"	4,765 LBS	590 LBS



<b>190MDB</b>	LENGTH	HEIGHT	DRY WEIGHT	HITCH WEIGHT
	22'6"	10'6"	4,755 LBS	530 LBS



<b>191MSL</b>	LENGTH	HEIGHT	DRY WEIGHT	HITCH WEIGHT
	22'6"	10'6"	5,005 LBS	620 LBS



<b>191MDB</b>	LENGTH	HEIGHT	DRY WEIGHT	HITCH WEIGHT
	22'6"	10'6"	4,965 LBS	600 LBS

Please Note: Information on this flyer is the latest available at the time of publication approval. Ember Recreational Vehicles reserves the right to make changes and to discontinue models without notice or obligation. RVs built for sale in Canada may differ to conform to Canadian codes. EMBER is a registered trademark of Ember Recreational Vehicles, Inc. ©2023 EMBER RECREATIONAL VEHICLES, INC. REV230824

EXPLORE MORE AT [EmberRV.com](https://www.EmberRV.com)



# 2024 OVERLAND SERIES



## STANDARDS

### Construction

- CURT® Trailing-Arm Independent Suspension with Heavy-Duty Coil Springs with Dual Shock Absorbers (each wheel)
- Trailblazer™ Heavy-Duty Off-road Chassis
- VersaCoupler® Height-Adjustable Bolt-On Hitching System with LED Hitch Light
- 5-Sided Aluminum Frame Construction
- Gel-coated Fiberglass Exterior
- Laminated Azdel Onboard® Composite Side, Rear, Front, and Slide Room End Walls (inner and outer substrates)
- Laminated Azdel Onboard® Composite Rooftop (inner and outer substrates)
- Structural Composite Flooring
- Steel Fenders/Wheel Wells
- Aluminum Bed, Bunk, and/or Dinette Construction (where applicable)

### Exterior

- Dual-Pane Acrylic Caravan Windows with Integrated Thermal Shades/Screens
- Nitro-filled 16" Goodyear Wrangler Off-Road Tires - Load Range E (LT235/85R16E, including spare)
- Custom Aluminum Rims (including spare)
- Gear Box: Tongue-Mounted, Formed Aluminum, LP and Lockable Storage
- XL Fresh Water Tank (55 gallons)
- Fully Adjustable Triple Solid Step™
- 30" Friction Hinge Entrance Door with Thinshade™ Window Shade and Screen Shot™ Screen Door
- Electric Awning with Dimmable LED Light
- Front Electric Flat Jack
- Dual Go Power!® 200W Rooftop Solar Panels (400W total)
- 50 Amp Victron® MPPT Solar Controller
- Side and Rooftop Solar Ports
- Tire Pressure Monitoring System (TPMS)
- Pre-wired For Rear/Side Cameras
- Lockable Parking Brake
- High-Visibility LED Exterior Lighting
- Back-Up Light
- Keyed-Alike™ Locking System
- Starlink cable prep

- Universal Docking Station with Outside Shower and Water Heater Bypass
- Black Tank Flush
- 360 Siphon® Cap on Black Tank Vent
- Enclosed Radiant Barrier Underbelly
- 12V Tank Heaters
- Self-Adjusting Electric Brakes
- Dual 20# LP Tanks (40# total capacity)
- LP Quick Connect
- 30 Amp Service / 55 Amp Converter
- Detachable Shore Power Cord
- Frame-Integrated Rear 2" Accessory Receiver (300# capacity)
- Front and Rear Quick Drop™ Stabilizers
- Repositionable/Telescoping Roof Ladder + Rear-Mounted Bracket
- Winegard Air 360+ Omnidirectional Antenna (Wi-Fi/LTE Prep)

### Interior

- "Stargazer" Dual Pane Acrylic Skylight with Integrated Thermal Shades/Screens
- 60" x 80" Residential-Sized Queen Bed with Bedside USB + 120V Power and LED Lighting
- EmberLink™ Smart RV Control System
- 12V LED HDTV with Built-In Bluetooth AV System
- 2000W Pure Sine Wave Inverter
- 12V Refrigerator
- Convection Microwave/Air Fryer
- Hardwood Framed Cabinet Doors with Self Close Hidden Hinges
- Hardwood Framed Drawer Fronts with Soft Close Drawers
- Dimmable Interior/Exterior LED Lighting
- 3-Speed 12V Powered Ceiling Vent
- Seamless Countertops
- Stainless Steel Kitchen Sink with Flush Mount Cover
- Dual-burner cooktop
- Showermi\$er™ Fresh Water Saver
- Porcelain Foot Flush Toilet
- Medicine Cabinet with LED Backlight
- Bathroom Skylight and 12V Fan
- Smoke/CO/LP Detectors
- Fire Extinguish

## OPTIONS

- (MANDATORY) Truma Combi: High Efficiency LP Water Heater/Furnace Combo
- (MANDATORY) Truma Aventa A/C: Low-profile "Whisper Quiet" Energy Efficient 13,500 BTU Air Conditioner
- Outside Griddle (connects to LP Quick Connect, N/A 190MSL, 191MSL)
- Wireless Side/Rear Observation Camera System with Monitor
- **MAX SOLAR PACKAGE:** 3000W Victron® Inverter (in place of 2000W) with Cerbo GX Communication Center, 270Ah 12V Battle Born® Gamechanger Lithium-ion (LiFePO4) Battery, Two Additional Roof-mounted 200W Solar Panels (800W total), Upgraded Victron® Bluetooth® MPPT Controller, Cold-Weather Battery Disconnect, and REDARC® DC to DC Trailer Battery Charger
- Additional 270Ah 12V Battle Born® Gamechanger Lithium-ion (LiFePO4) Battery



FINALIST

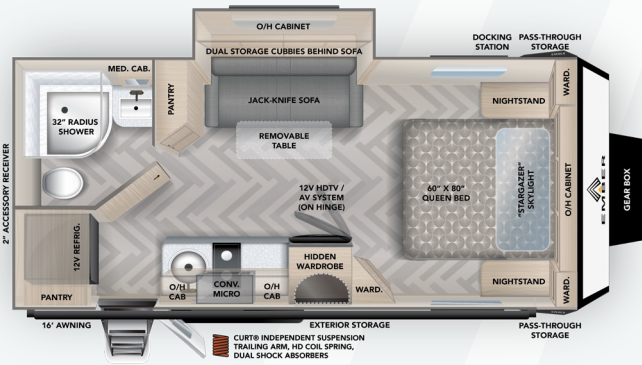


## NOTES

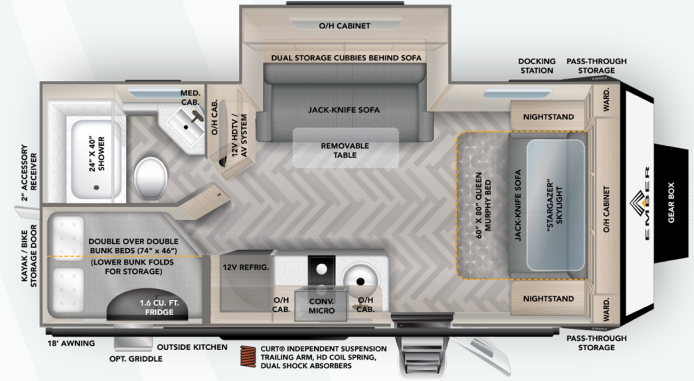




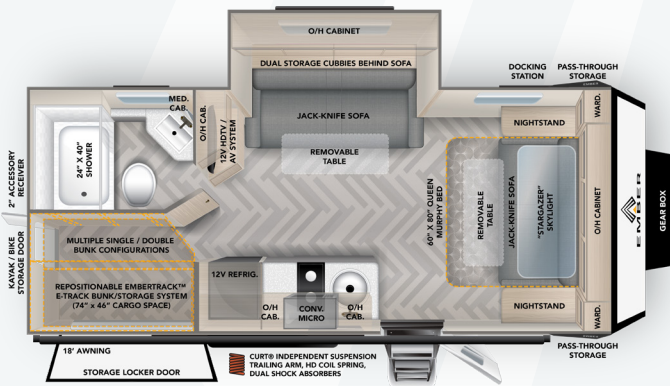
# 2024 OVERLAND SERIES TANDEM



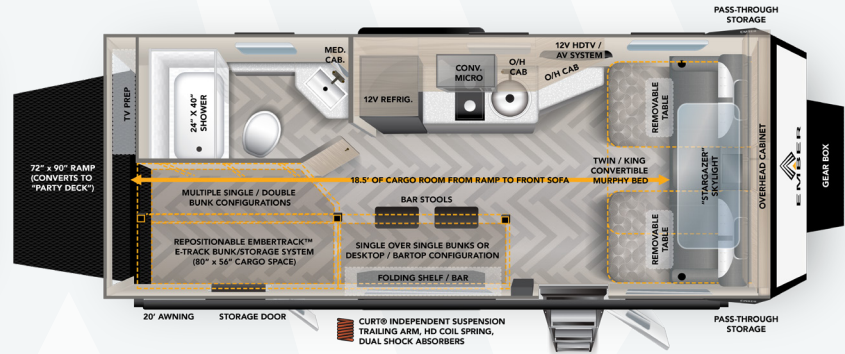
201FBQ	LENGTH	HEIGHT	DRY WEIGHT	HITCH WEIGHT
	24'1"	10'4"	5,255 LBS	605 LBS



221MDB	LENGTH	HEIGHT	DRY WEIGHT	HITCH WEIGHT
	26'1"	10'4"	5,690 LBS	620 LBS



221MSL	LENGTH	HEIGHT	DRY WEIGHT	HITCH WEIGHT
	26'1"	10'4"	5,680 LBS	655 LBS



240TKR	LENGTH	HEIGHT	DRY WEIGHT	HITCH WEIGHT
	28'3"	10'9"	6,865 LBS	TBD LBS

Please Note: Information on this flyer is the latest available at the time of publication approval. Ember Recreational Vehicles reserves the right to make changes and to discontinue models without notice or obligation. RVs built for sale in Canada may differ to conform to Canadian codes. EMBER is a registered trademark of Ember Recreational Vehicles, Inc. ©2023 EMBER RECREATIONAL VEHICLES, INC. REV231031

EXPLORE MORE AT [EmberRV.com](http://EmberRV.com)



# 2024 OVERLAND SERIES TANDEM



## STANDARDS

### Construction

- Tandem CURT® Trailing-Arm Independent Suspension with Heavy-Duty Coil Springs with Dual Shock Absorbers (each wheel)
- Trailblazer™ Heavy-Duty Off-road Chassis
- VersaCoupler® Height-Adjustable Bolt-On Hitching System with LED Hitch Light
- 5-Sided Aluminum Frame Construction
- Gel-coated Fiberglass Exterior
- Laminated Azdel Onboard® Composite Side, Rear, Front, and Slide Room End Walls (inner and outer substrates)
- Laminated Azdel Onboard® Composite Rooftop (inner and outer substrates)
- Structural Composite Flooring
- Steel Fenders/Wheel Wells
- Aluminum Bed, Bunk, and/or Dinette Construction (where applicable)

### Exterior

- Dual-Pane Acrylic Caravan Windows with Integrated Thermal Shades/Screens
- Nitro-filled 16" Goodyear Wrangler Off-Road Tires - Load Range E (LT235/85R16E, including spare)
- Custom Aluminum Rims (including spare)
- Gear Box: Tongue-Mounted, Formed Aluminum, LP and Lockable Storage
- XL Fresh Water Tank
- Fully Adjustable Triple Solid Step™
- 30" Friction Hinge Entrance Door with Thinshade™ Window Shade and Screen Shot™ Screen Door
- Electric Awning with Dimmable LED Light
- Front Electric Flat Jack (N/A 240TKR)
- Dual Go Power!® 200W Rooftop Solar Panels (400W total)
- 50 Amp Victron® MPPT Solar Controller
- Side and Rooftop Solar Ports
- Tire Pressure Monitoring System (TPMS)
- Pre-wired For Rear/Side Cameras
- Lockable Parking Brake
- High-Visibility LED Exterior Lighting
- Back-Up Light
- Keyed-Alike™ Locking System
- Starlink cable prep

- Universal Docking Station with Outside Shower and Water Heater Bypass
- Black Tank Flush
- 360 Siphon® Cap on Black Tank
- Enclosed Radiant Barrier Underbelly
- 12V Tank Heaters
- Self-Adjusting Electric Brakes
- Dual 20# LP Tanks (40# total capacity)
- LP Quick Connect
- 30 Amp Service / 55 Amp Converter
- Detachable Shore Power Cord
- Frame-Integrated Rear 2" Accessory Receiver (300# capacity)
- Front and Rear Quick Drop™ Stabilizers
- Repositionable/Telescoping Roof Ladder + Rear-Mounted Bracket
- Winegard Air 360+ Omnidirectional Antenna (Wi-Fi/LTE Prep)

### Interior

- "Stargazer" Dual Pane Acrylic Skylight with Integrated Thermal Shades/Screens
- 60" x 80" Residential-Sized Queen Bed with Bedside USB + 120V Power and LED Lighting (N/A 240TKR)
- EmberLink™ Smart RV Control System
- 12V LED HDTV with Built-In Bluetooth AV System
- 2000W Pure Sine Wave Inverter
- 12V Refrigerator
- Convection Microwave/Air Fryer
- Hardwood Framed Cabinet Doors with Self Close Hidden Hinges
- Hardwood Framed Drawer Fronts with Soft Close Drawers
- Dimmable Interior/Exterior LED Lighting
- 3-Speed 12V Powered Ceiling Vent
- Seamless Countertops
- Stainless Steel Kitchen Sink with Flush Mount Cover
- Dual-burner cooktop
- Showermi\$er™ Fresh Water Saver
- Porcelain Foot Flush Toilet
- Medicine Cabinet with LED Backlight
- Bathroom Skylight and 12V Fan
- Smoke/CO/LP Detectors
- Fire Extinguisher

## OPTIONS

- (MANDATORY) Truma Combi: High Efficiency LP Water Heater/Furnace Combo
- (MANDATORY) Truma Aventa A/C: Low-profile "Whisper Quiet" Energy Efficient 13,500 BTU Air Conditioner
- Outside Griddle (connects to LP Quick Connect, 221MDB Only)
- Wireless Side/Rear Observation Camera System with Monitor
- **MAX SOLAR PACKAGE:** 3000W Victron® Inverter (in place of 2000W) with Cerbo GX Communication Center, 270Ah 12V Battle Born® Gamechanger Lithium-ion (LiFePO4) Battery, Two Additional Roof-mounted 200W Solar Panels (800W total), Upgraded Victron® Bluetooth® MPPT Controller, Cold-Weather Battery Disconnect, and REDARC® DC to DC Trailer Battery Charger
- Additional 270Ah 12V Battle Born® Gamechanger Lithium-ion (LiFePO4) Battery



**FINALIST**



## NOTES

