



H A M P T O N



CROSSROADS[™]
Recreational Vehicles



395BAM Back to Front



395BAM Bedroom



395BAM Kitchen



395BAM Living Area



395BAM Bathroom & Laundry

STANDARDS & OPTIONS

STANDARDS

LIVING ROOM

- Exterior Cable w/ Satellite Hookup & Booster
- 8' from Floor to Ceiling Height (Non Loft Models)
- 9' From Floor to Ceiling Height (Loft Models)
- 7' 0" Headroom in Slide-Outs
- Two Toned Wood Fascia
- Decorative Accent Lighting
- Powered Theatre Seating
- TV Antenna w/ Cable Output
- HD LED TV
- Living Room Tri-Fold Hide-A-Bed Sofa (VBM)
- Patio Door w/ Swing-Out Assist Rail
- Interior LED Lighting
- Roller Blinds
- (3) 13.5K BTU A/C
- 5,100 BTU Fireplace
- Ceiling Fan (VBM)

KITCHEN

- Residential Refrigerator
- Stainless Steel Microwave
- Solid Surface Countertops
- Raised Panel Cabinet Door
- Deep Stainless Steel Sink
- Faucet w/ Pull-Out Sprayer
- Residential Overhead Cabinets w/ Lighting
- Freestanding Table and Chairs
- Full Extension Ball Bearing Drawer Guides
- Residential 4 Burner Range
- 3.37 Ft³ Oven Capacity

BEDROOM

- TV Hook-up
- Deluxe Closet
- Coordinated Window Treatments & Bedspread
- King Sized Residential Mattress (VBM)
- 13.5K BTU A/C

EXTERIOR

- Tinted Glass Windows
- Patio Awning
- Exterior Speakers

- Outside Faucet
- One Piece Fiberglass Front Cap
- Wi-Fi Prep

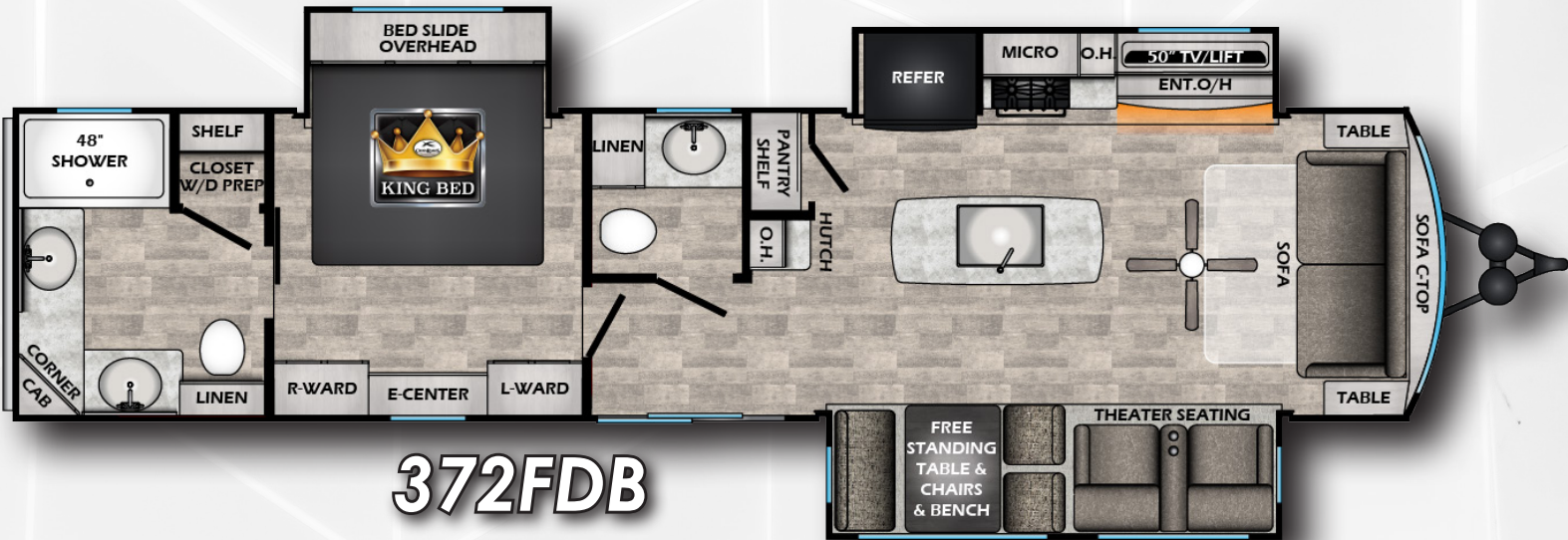
CONSTRUCTION

- 50 Amp Service
- One Piece Radius Roof
- 3/8" Roof Decking
- 16" OC Truss Rafters with 4-1/2" Crown
- Fiberglass Roof & Floor Insulation w/ Radiant Tech Foil
- Rain Gutters Along Entire Roof Line
- 35,000 BTU Floor Ducted Furnace
- 5/8" Floor Decking
- 12" I-Beam
- 60" x 76" Patio Door
- 101" Overall Unit Width
- Electric Slides Throughout
- Dual LP Tank Hook-up (Front and Back)
- On Demand Water Heater
- Black Tank Flush
- Enclosed Underbelly
- Swing-Out Entry Assist Handle at Second Door
- Severe Weather Welded Mounts
- Blade Pure A/C System

CONVENIENCE PACKAGE (STANDARD)

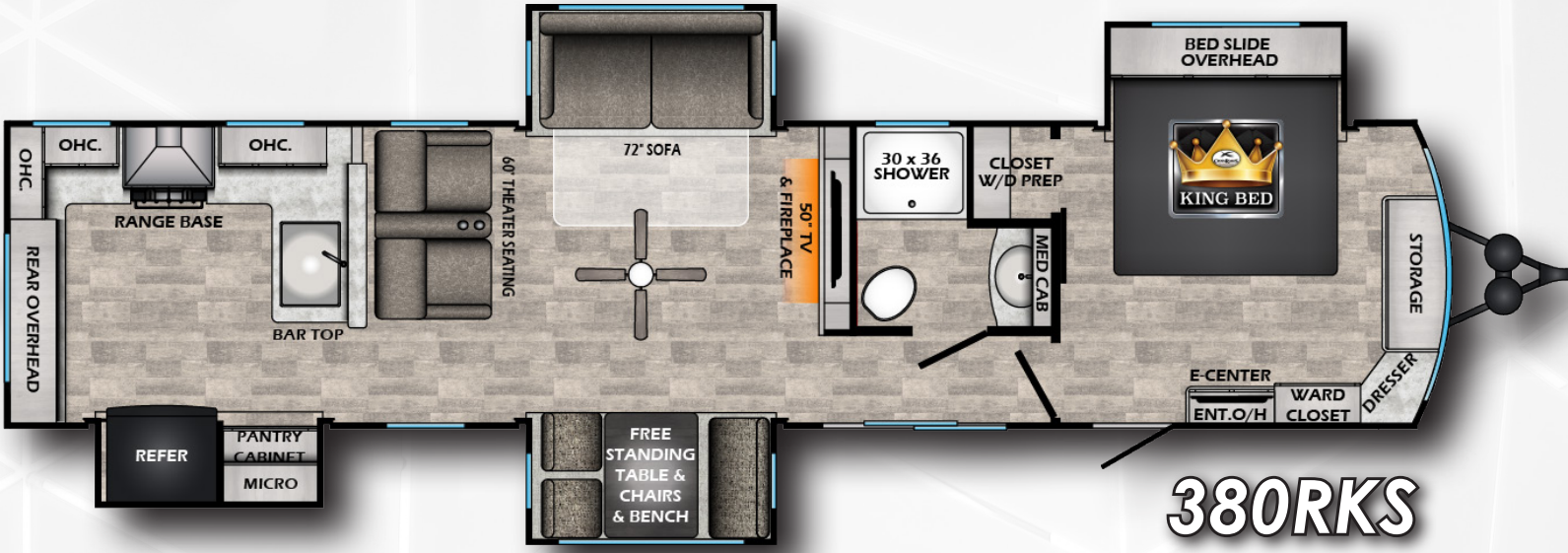
- Smoke Detector
- LP Detector
- (3) 13.5K BTU A/C
- Awning
- Microwave
- Power Vent in Bathroom
- TV Antenna
- One Piece Shower
- Water Heater Bypass
- Quilted Bedspread
- KeyTV

*VBM: Varies By Model

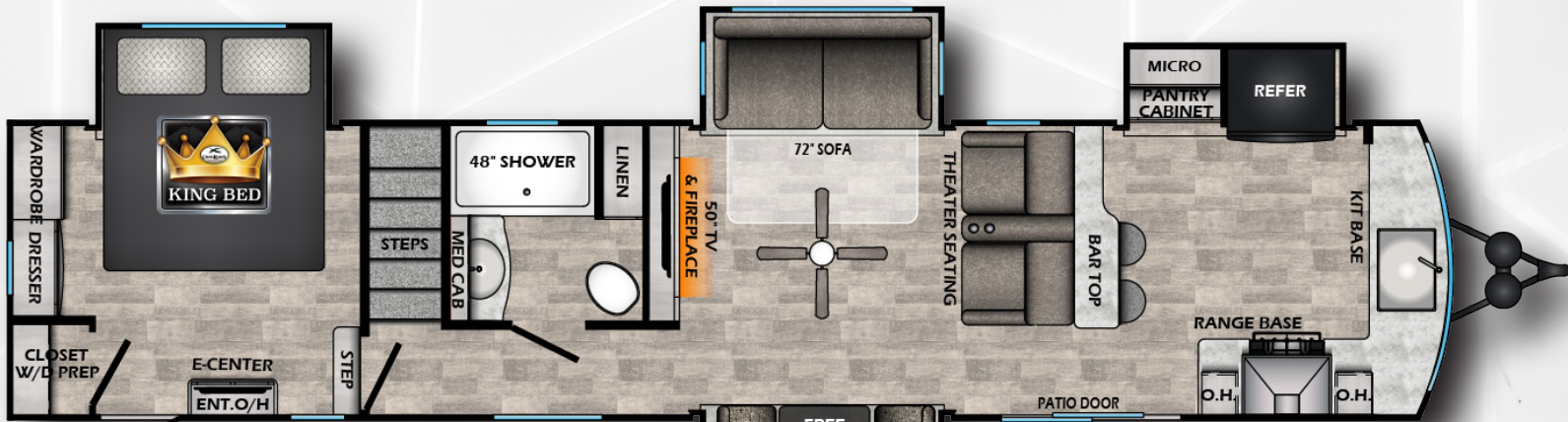




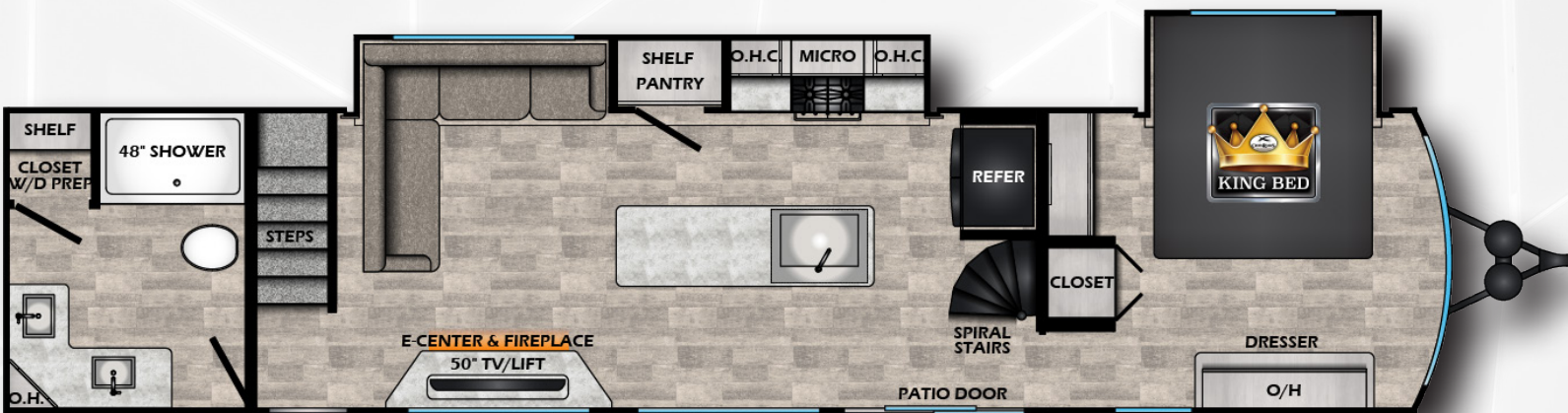
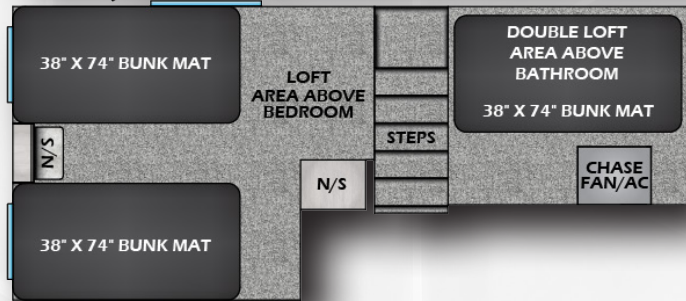
378DBB



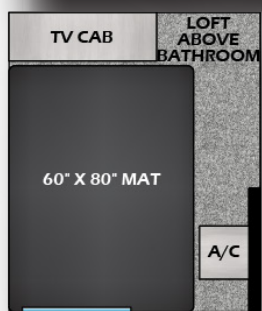
380RKS

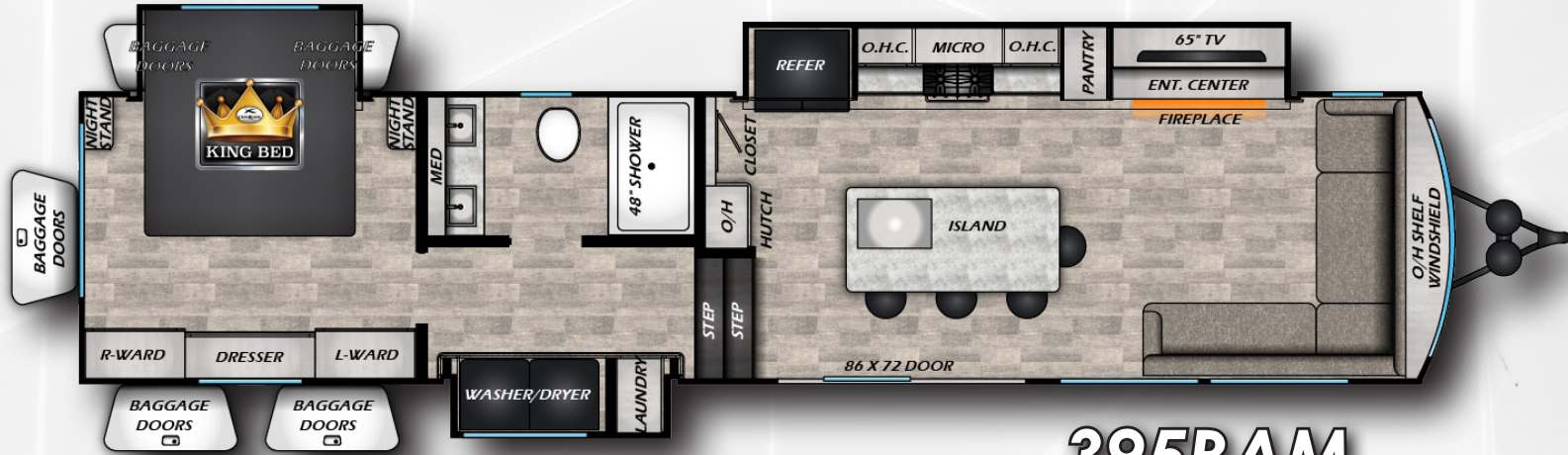


388FKL



390PVL

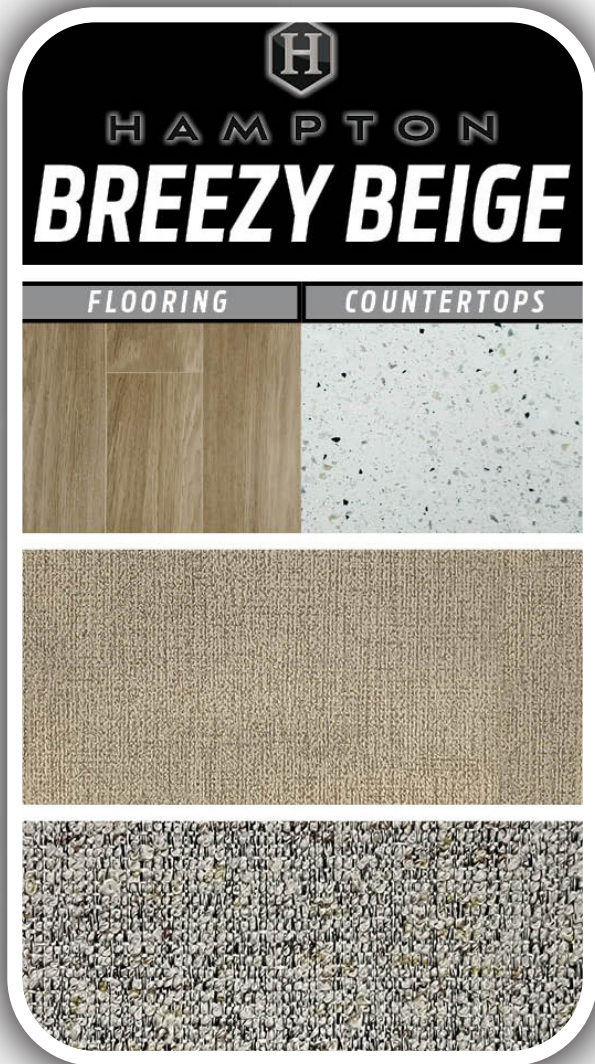




395BAM

MODEL	372FDB	375DBL	378DBB	380RKS	388FKL	390PVL	395BAM
DRY WEIGHT	11020	11696	11706	10928	12074	12120	12282
HITCH	1928	1610	1816	1672	1768	1672	1482
LENGTH	41' 4"	41' 8"	41' 8"	42' 0"	42' 11"	42' 11"	42' 11"
EXT. HEIGHT + A/C	13' 0"	13' 6"	13' 0"	13' 0"	13' 6"	13' 6"	13' 6"
FRESH WATER	50 Gal	50 Gal	50 Gal	50 Gal	50 Gal	50 Gal	54 Gal
BLACK WATER	78 Gal	39 Gal	78 Gal	39 Gal	39 Gal	39 Gal	40 Gal
GRAY WATER	78 Gal	84 Gal	117 Gal	78 Gal	117 Gal	78 Gal	40 Gal

DECOR



www.crossroadsrv.com • 2164 Caragana Ct, Goshen, IN 46526 • (260) 593 - 3850

DISCLAIMER: Product information is as accurate as possible as of the date of publication of this brochure. All features, floor plans, and specifications in this brochure are subject to change without notice. Please also consult CrossRoads' web site at www.crossroadsrv.com for more current product information and specifications. Tow Vehicle Disclaimer. CAUTION: Owners of CrossRoads recreational vehicles are solely responsible for the selection and proper use of tow vehicles. All customers should consult with a motor vehicle manufacturer or their dealer concerning the purchase and use of suitable tow vehicles for CrossRoads products. CrossRoads disclaims any liability or damages suffered as a result of the selection, operation, use or misuse of a tow vehicle. CROSSROADS' LIMITED WARRANTY DOES NOT COVER DAMAGE TO THE RECREATIONAL VEHICLE OR THE TOW VEHICLE AS A RESULT OF THE SELECTION, OPERATION, USE OR MISUSE OF THE TOW VEHICLE. REFERENCE CROSSROADS RV COMPANY OWNERS MANUAL FOR LIMITED WARRANTY DETAILS. *Length is defined as the distance from the centerline of hitch pin/coupler to rear bumper of trailer.