



# Della Terra Dual Axles



WWW.EASTTOWESTRV.COM/DELLA-TERRA  
3000 CR 6 W, Elkhart, IN 46514 | 574.264.6664

### EXPLORE COMFORT PACKAGE (MANDATORY)

- 81" INTERIOR HEIGHT
- 10.7' CUBIC ELECTRIC 12V REFRIGERATOR
- SOLID BEDROOM DOOR\*
- CABLE/SATELLITE READY
- USB CHARGING STATIONS (BEDS, BUNKS, & TABLE)\*
- 3-BURNER RANGE WITH GLASS COVER/OVEN
- 48" DINETTE WITH PULLOUT STORAGE ON ROLLER GUIDES\*
- BUILT IN FIREPLACE (251RD, 241BH, 261RB, 262BH, 272RL, 312BH)
- PORCELAIN FOOT FLUSH TOILET
- BACKUP CAMERA PREP
- INTERIOR LED LIGHTS
- WINDOW VALANCE PACKAGE WITH BLACK NIGHT SHADES
- SEAMLESS PRESSED COUNTERTOPS (NO T-MOLD)
- 35,000 BTU FURNACE
- EXTRA LARGE TINTED PICTURE WINDOWS
- HEADBOARD IN MAIN BEDROOM
- KITCHEN BACKSPLASH
- CAMP KITCHEN (241BH, 262BH, 312BH)
- \*where applicable

### ADVENTURE OUTDOOR PACKAGE (MANDATORY)

- UNIVERSAL DOCKING STATION WITH BATTERY DISCONNECT
- TANKLESS WATER HEATER
- ABS SHOWER SURROUND
- POWER AWNING WITH LED LIGHTING
- OUTSIDE SHOWER WITH HOT & COLD WATER
- HDTV ANTENNA WITH WIFI PREP
- BACKUP CAMERA PREP
- SOLID ENTRY STEPS
- SOLAR PREP
- BLACK TANK FLUSH
- EXTERIOR LED LIGHTS
- DETACHABLE POWER CORD
- POWER TONGUE JACK WITH LED LIGHT
- OVERSIZED EXTERIOR SWING ARM ENTRY ASSIST HANDLE
- STABILIZER JACKS WITH ELECTRIC JACK PREP
- RV GRILL QUICK DISCONNECT

### BASE CAMP PACKAGE (MANDATORY)

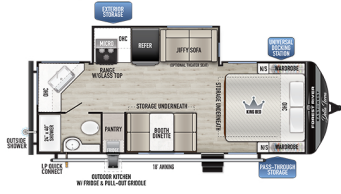
- AUTOMOTIVE DEPOSITION COATING
- KING SIZE BED
- KITCHEN APPLIANCE PACKAGE WITH 17" OVEN & 3 BURNER RANGE
- HEATED & ENCLOSED UNDERBELLY
- ENCLOSED HOLDING TANKS
- FLUSH FLOOR SLIDES (NO CARPET)
- 15,000 BTU DUCTED A/C WITH QUICK COOL
- UPGRADED INTERIOR DESIGN PACKAGE
- MAGNETIC BAGGAGE DOOR CATCHES

### MANDATORY OPTION

- 50 AMP SERVICE WITH A/C PREP: 251RD, 261RB, 262BH, 262BH, 263RK, 272RL, 312BH

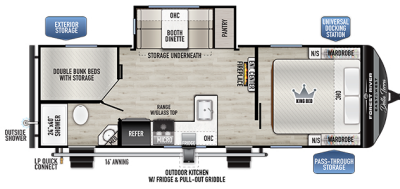
\*AVERAGE WEIGHTS | \*\*PIN TO BUMPER

## 221ML



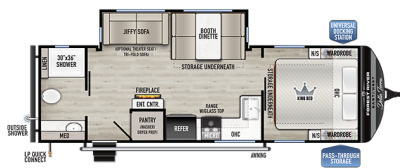
EXT. HEIGHT: **10' 5"** BOX LENGTH: **24' 2"** TIRE SIZE: **15"**  
\*\*LENGTH: **27' 4"** \*WIDTH: **96"** \*\*TONGUE (LBS.): **670**  
\*UWV (LBS.): **6,323** CCC (LBS.): **3,107** GVWR: **9,470**  
TANKS (Fresh/Black/Grey): **40 / 30 / 69**

## 241BH



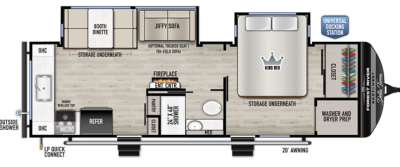
EXT. HEIGHT: **10' 5"** BOX LENGTH: **25' 11"** TIRE SIZE: **15"**  
\*\*LENGTH: **29' 11"** \*WIDTH: **96"** \*\*TONGUE (LBS.): **645**  
\*UWV (LBS.): **6,118** CCC (LBS.): **3,327** GVWR: **9,445**  
TANKS (Fresh/Black/Grey): **40 / 30 / 60**

## 261RB

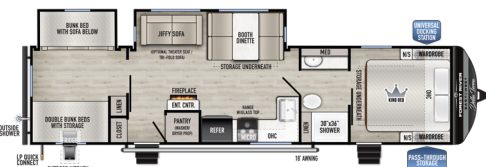


EXT. HEIGHT: **10' 5"** BOX LENGTH: **27' 0"** TIRE SIZE: **15"**  
\*\*LENGTH: **30' 6"** \*WIDTH: **96"** \*\*TONGUE (LBS.): **775**  
\*UWV (LBS.): **6,473** CCC (LBS.): **3,062** GVWR: **9,575**  
TANKS (Fresh/Black/Grey): **40 / 30 / 60**

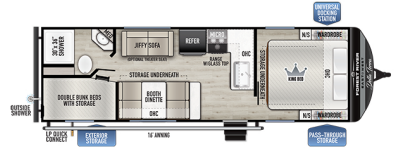
## 263RK



COMING SOON!

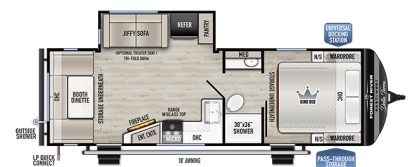


## 240BH



COMING SOON!

## 251RD



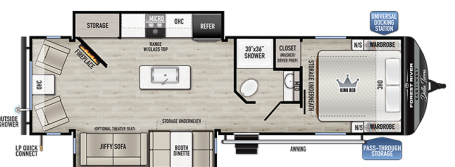
EXT. HEIGHT: **10' 5"** BOX LENGTH: **25' 10"** TIRE SIZE: **15"**  
\*\*LENGTH: **29' 10"** \*WIDTH: **96"** \*\*TONGUE (LBS.): **635**  
\*UWV (LBS.): **6,288** CCC (LBS.): **3,107** GVWR: **9,435**  
TANKS (Fresh/Black/Grey): **40 / 30 / 60**

## 262BH



EXT. HEIGHT: **10' 5"** BOX LENGTH: **27' 11"** TIRE SIZE: **15"**  
\*\*LENGTH: **31' 11"** \*WIDTH: **96"** \*\*TONGUE (LBS.): **820**  
\*UWV (LBS.): **7,043** CCC (LBS.): **2,537** GVWR: **9,620**  
TANKS (Fresh/Black/Grey): **40 / 30 / 60**

## 272RL



EXT. HEIGHT: **10' 5"** BOX LENGTH: **30' 10"** TIRE SIZE: **15"**  
\*\*LENGTH: **33' 11"** \*WIDTH: **96"** \*\*TONGUE (LBS.): **835**  
\*UWV (LBS.): **7,925** CCC (LBS.): **1,672** GVWR: **9,635**  
TANKS (Fresh/Black/Grey): **40 / 30 / 60**

## 312BH

EXT. HEIGHT: **10' 5"** BOX LENGTH: **34' 6"** TIRE SIZE: **15"**  
\*\*LENGTH: **38' 0"** \*WIDTH: **96"** \*\*TONGUE (LBS.): **935**  
\*UWV (LBS.): **8,623** CCC (LBS.): **2,712** GVWR: **11,335**  
TANKS (Fresh/Black/Grey): **40 / 30 / 60**



All information contained in this brochure is believed to be accurate at the time of publication. However, during the model year, it may be necessary to make revisions and Forest River, Inc., reserves the right to make all such changes without notice, including prices, colors, materials, equipment and specifications as well as the addition of new models and the discontinuance of models shown in this brochure. Therefore, please consult with your Forest River dealer and confirm the existence of any materials, design or specifications that are material to your purchase decision. Litho. U.S.A. FOR 2454 P&W: 07.01.2024



# Della Terra LE Single Axles



WWW.EASTTOWESTRV.COM/DELLA-TERRA-LE  
3000 CR 6 W, Elkhart, IN 46514 | 574.264.6664

**OUR COMPANY TAKES PRIDE IN OUR FIVE GUIDING PRINCIPLES AND OUR CORPORATE PHILOSOPHY**  
which focuses on people working together to create high quality, value-added products that deliver the ultimate camping experience!

## Sustainable Manufacturing

An important objective to our strategy and operations is to implement economically sound manufacturing processes to reduce/recycle waste & conserve energy and natural resources.

## Culture & Values

We are a forward thinking company committed to fostering a culture of teamwork. By being transparent, we encourage our employees to think outside the box and make a difference.

## Corporate & Social Responsibility

We foster a business environment in which we focus on and practice:  
-Ethical Labor Practice  
-Teamwork  
-Philanthropy  
-Volunteering

## Quality & Construction

Our team takes pride in each unit we build. Our manufacturing standards and point to point inspections ensure each EAST TO WEST brand is built to the same quality specifications every time.

## Our Commitment

We strive to provide the highest quality products at the best possible price to our customers. We invite you to be a part of the EAST TO WEST family and we look forward to exceeding your expectations!



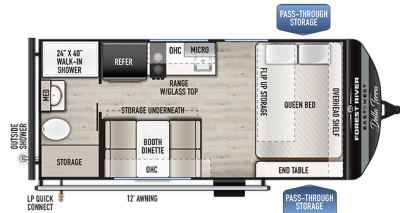
**24/7 EMERGENCY  
ROADSIDE ASSISTANCE  
WITH VEHICLE PURCHASE**

<p>TOWING JUMP-STARTS TIRE CHANGES FLUID DELIVERY LOCKOUT SERVICE</p>	<p>WINCH-OUT MOBILE MECHANIC TECHNICAL SUPPORT DEALER LOCATOR SERVICES</p>
---	--

**SPECIALIZED  
DISPATCH SERVICES**

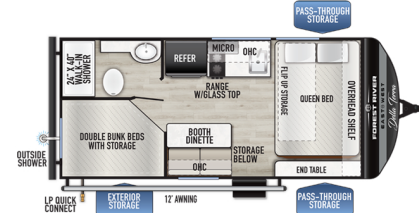
\*VALID FOR 1 YEAR FROM DATE OF PURCHASE

## 160RBXLE



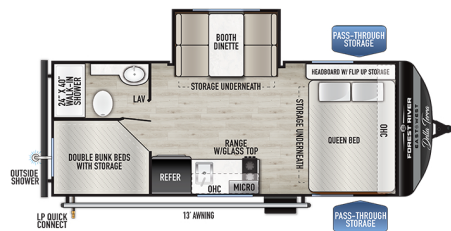
EXT. HEIGHT: **10' 5"** BOX LENGTH: **17' 0"** TIRE SIZE: **15"**  
**\*\*LENGTH: 21' 0"** **\*WIDTH: 96"** **\*\*TONGUE (LBS.): 340**  
**\*UVW (LBS.): 3,518** **CCC (LBS.): 1,222** **GVWR: 4,740**  
 TANKS (Fresh/Black/Grey): **40 / 30 / 60**

## 170BHXLE



EXT. HEIGHT: **10' 5"** BOX LENGTH: **17' 0"** TIRE SIZE: **15"**  
**\*\*LENGTH: 21' 0"** **\*WIDTH: 96"** **\*\*TONGUE (LBS.): 385**  
**\*UVW (LBS.): 3,513** **CCC (LBS.): 1,252** **GVWR: 4,785**  
 TANKS (Fresh/Black/Grey): **40 / 30 / 60**

## 181BHSLE



EXT. HEIGHT: **10' 5"** BOX LENGTH: **24' 0"** TIRE SIZE: **15"**  
**\*\*LENGTH: 20' 2"** **\*WIDTH: 96"** **\*\*TONGUE (LBS.): 520**  
**\*UVW (LBS.): 4,478** **CCC (LBS.): 1,142** **GVWR: 5,620**  
 TANKS (Fresh/Black/Grey): **40 / 30 / 60**

## LE VALUE PACKAGE

- 8 FOOT WIDE
- 81" INTERIOR CEILING HEIGHT
- FRICITION HINGED DOORS
- SHOWER SURROUND
- 8,000 BTU FURNACE
- 10 CUBIC FOOT 12 VOLT REFRIGERATOR
- 2 BURNER STOVE
- OUTSIDE HOT & COLD SHOWER
- CABLE/SATELLITE READY
- USB CHARGING STATION
- EXTERIOR LED UNDER POWER AWNING
- SOLAR PREP
- LADDER PREP
- BLACK TANK FLUSH
- SEAMLESS COUNTERTOPS (NO - TMOLD)
- CPAP STORAGE
- MOTION SENSOR LIGHTS
- WIFI PREP
- BATTERY DISCONNECT
- RETRACTABLE POWER CORD

### SPECIFICATION DEFINITIONS

**GVWR (Gross Vehicle Weight Rating)** - is the maximum permissible weight of the unit when fully loaded. It includes all weights, inclusive of all fluids, cargo, optional equipment and accessories. For safety and product performance do NOT exceed the GVWR.

**GAWR (Gross Axle Weight Rating)** - is the maximum permissible weight, including cargo, fluids, optional equipment and accessories that can be safely supported by a combination of all axles.

**UVW (Unloaded Vehicle Weight)\*** - is the typical weight of the unit as manufactured at the factory. It includes all weight at the unit's axle(s) and tongue or pin and LP Gas. The UVW does not include cargo, fresh potable water, additional optional equipment or dealer installed accessories.

\*Estimated average based on standard build optional equipment.

**CCC (Cargo Carrying Capacity)\*\*** - is the amount of weight available for fresh potable water, cargo, additional optional equipment and accessories. CCC is equal to GVWR minus UVW. Available CCC should accommo-date fresh potable water (8.3 lbs per gallon). Before filling the fresh water tank, empty the black and gray tanks to provide for more cargo capacity.

\*\* Estimated average based on standard build optional equipment

Each Forest River RV is weighed at the manufacturing facility prior to shipping. A label identifying the unloaded vehicle weight of the actual unit and the cargo carrying capacity is applied to every Forest River RV prior to leaving our facilities. The load capacity of your unit is designated by weight, not by volume, so you cannot necessarily use all available space when loading your unit.

YOUR *Della Terra* DEALER



**FOREST RIVER**

WWW.FORESTRIVERINC.COM