

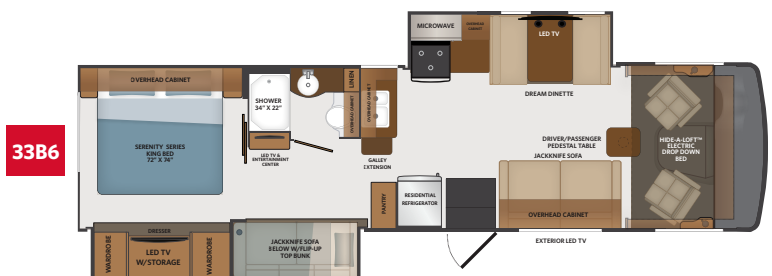
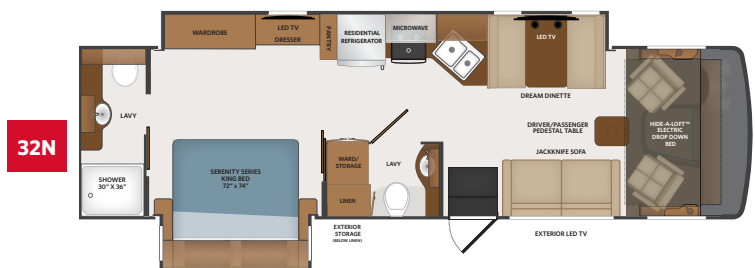
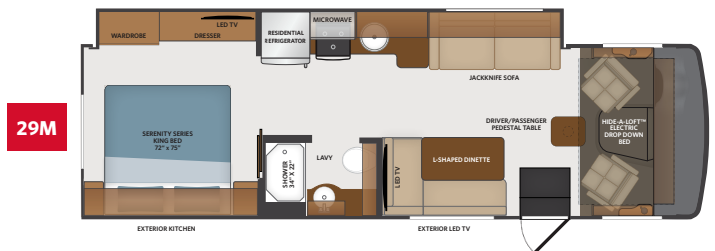
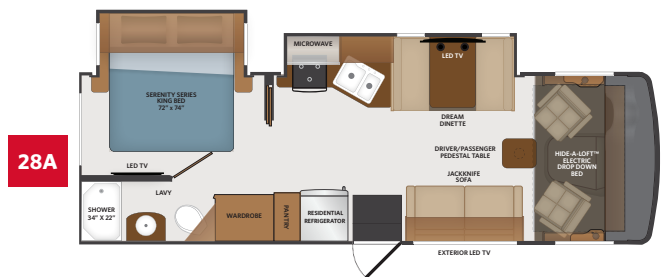


TOP FEATURES

- Ford 7.3L V8. (335 HP, 468ft.lb.)
- 16K - 22K chassis
- 8,000 lb. tow hitch
- Pre wired for solar panel
- Side-View camera integrated into exterior mirrors
- Winegard 360+ W/4g Gateway, 5G Ready, And HD Antenna
- Sony Stereo w/AM/FM/Bluetooth w/backup camera screen
- MultiPlex house controls that can be controlled by your smart phone or tablet
- 50" exterior LED television
- Largest exterior television at this price point*
- Hide-A-Loft™ electric drop down bed (600# Capacity)
- Standard residential refrigerator
- No luan backer on fiberglass sidewall reducing the possibility of delamination
- Fleetwood PowerLock™ system II integrates the sidewall to roof structure, construction techniques, and allows for years of worry free enjoyment
- Large one piece panoramic windshield

AVAILABLE OPTIONS

- Steering Stabilizer System
- Roof Vent Rain Covers
- Manual Theater Seating (28A, 32N, 33B6)
- KING® Universal Satellite System
- Dream Dinette (29M)
- Double Door Dometic 8 cu. Ft³ LP Refrigerator
- Dual A/C with 5500 watt Generator (29M)
- Dual A/C (11k) with EMS* - Residential Refrigerator (28A)



HEIRLOOM



SOFA



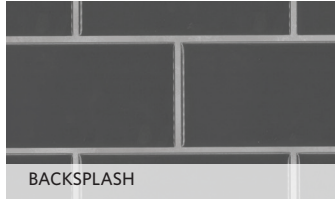
LIVING ACCENT



FLOORING



BEDDING



BACKSPLASH



COUNTERTOP



VALANCE



HERITAGE



ROASTED ALMOND

LANDSCAPE



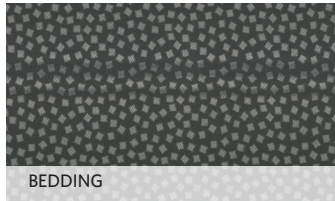
SOFA



LIVING ACCENT



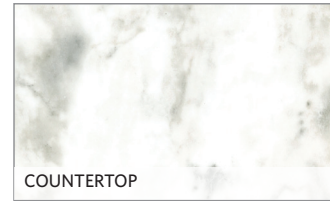
FLOORING



BEDDING



BACKSPLASH



COUNTERTOP



VALANCE



SEDONA

CHASSIS

MODEL	28A	29M	32N	33B6
Wheelbase	190"	190"	208"	228"
Front GAWR (lbs)	6,500	7,000	8,000	8,000
Rear GAWR (lbs)	11,000	12,000	15,000	15,000
GCWR (lbs)	21,000	23,000	26,000	26,000
Hitch Rating Weight (lbs)	8,000	8,000	8,000	8,000
Tongue Weight (lbs)	800	800	800	800
Fuel Capacity (gal)	80	80	80	80

DIMENSIONS & CAPACITIES

MODEL	28A	29M	32N	33B6
Overall Length	29' 3"	31' 0"	33' 6"	34' 7"
Overall Height	12' 4"	12' 4"	12' 4"	12' 4"
Overall Width*	100"	100"	100"	100"
Interior Height*	82"	82"	82"	82"
Interior Width*	96"	96"	96"	96"
Patio Awning Width	20'	20'	14'	12'
Interior Storage (cu. ft.)	81	92	97	121
Exterior Storage (cu. ft.)	70	45	83	93
Fresh Water Capacity (gal)	50	50	50	50
Grey Water Capacity (gal)	37	37	37	37
Black Water Capacity (gal)	37	37	37	37

*Overall Width, Interior Height and Interior Width measured with slide-box in.

FORD® CHASSIS



Model: Ford®
 Engine: 7.3L Triton V8
 Transmission: Ford® 6-Speed, Automatic w/Overdrive
 Alternator: 210 Amp
 Torque: 468 lb.-ft. @ 3,750 RPM
 Horsepower: 335HP @ 3,750 RPM

EXTERIORS



BANSHEE

NEW EXTERIOR MY2025



RAPTOR

NEW EXTERIOR MY2025



SLINGSHOT

NEW EXTERIOR MY2025