



BLACKTHORN

FIFTH WHEELS

2024 FLOOR PLAN GUIDE



EastToWestRV.com/Blackthorn
A DIVISION OF FOREST RIVER



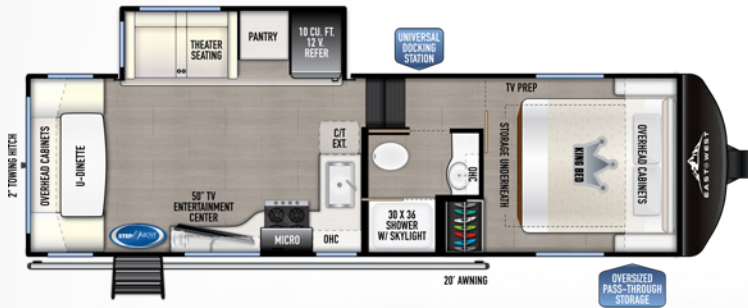
BLACKTHORN HALF-TON FIFTH WHEELS



22RK

REAR KITCHEN SINGLE SLIDE

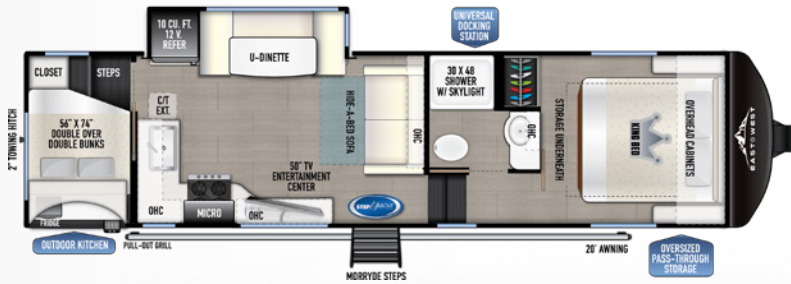
HITCH (LBS.): 1,170 U/VW (LBS.): 7,724 CCC (LBS.): 3,616
 LENGTH: 27' 3" EXTERIOR HEIGHT: 12' 5" WIDTH: 96"
 TANKS (F/G/B): 64 / 88 / 44 AWNING: 18'



26RD

REAR DEN SINGLE SLIDE

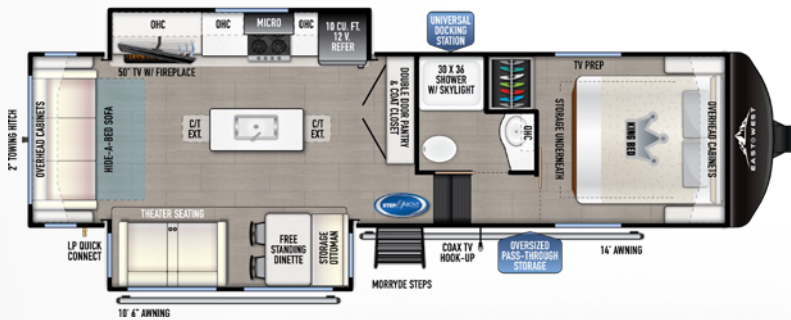
HITCH (LBS.): 1,235 U/VW (LBS.): 8,024 CCC (LBS.): 3,621
 LENGTH: 29' 9" EXTERIOR HEIGHT: 12' 8" WIDTH: 96"
 TANKS (F/G/B): 64 / 88 / 44 AWNING: 20'



27BH-OK

BUNK HOUSE W/ OUTDOOR KITCHEN

HITCH (LBS.): 1,400 U/VW (LBS.): 8,889 CCC (LBS.): 4,526
 LENGTH: 33' 2" EXTERIOR HEIGHT: 12' 6" WIDTH: 96"
 TANKS (F/G/B): 64 / 88 / 44 AWNING: 20'



28RL

REAR LOUNGE DOUBLE SLIDE

HITCH (LBS.): 1,590 U/VW (LBS.): 9,414 CCC (LBS.): 2,376
 LENGTH: 33' 2" EXTERIOR HEIGHT: 12' 9" WIDTH: 96"
 TANKS (F/G/B): 64 / 71 / 44 AWNING: 10' 6" & 14'



28RL-OK

REAR LOUNGE W/ OUTDOOR KITCHEN

HITCH (LBS.): 1520 U/VW (LBS.): 9639 CCC (LBS.): 2081
 LENGTH: 33' 2" EXTERIOR HEIGHT: 12' 9" WIDTH: 96"
 TANKS (F/G/B): 64 / 71 / 44 AWNING: 10' 6" & 14'

BLACKTHORN LUXURY FIFTH WHEELS



3100RL

REAR LOUNGE TRIPLE SLIDE

HITCH (LBS.): 2,125 UVV (LBS.): 10,584 CCC (LBS.): 3,541

LENGTH: 35' 4" EXTERIOR HEIGHT: 13' 2" WIDTH: 96"

TANKS (F/G/B): 64 / 88 / 44 AWNING: 10'6" & 16'



3101RL-OK

REAR LOUNGE TRIPLE SLIDE W/ OUTDOOR KITCHEN

HITCH (LBS.): 2,040 UVV (LBS.): 11,239 CCC (LBS.): 2,801

LENGTH: 35' 4" EXTERIOR HEIGHT: 13' 2" WIDTH: 96"

TANKS (F/G/B): 64 / 88 / 44 AWNING: 10'6" & 16'



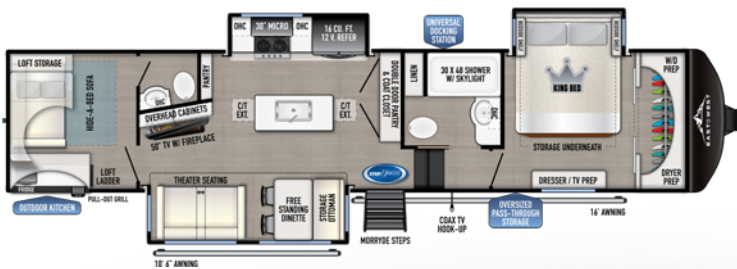
3300RD

REAR DEN TRIPLE SLIDE

HITCH (LBS.): 1,980 UVV (LBS.): 11,219 CCC (LBS.): 2,761

LENGTH: 37' 7" EXTERIOR HEIGHT: 13' 2" WIDTH: 96"

TANKS (F/G/B): 64 / 88 / 44 AWNING: 20'



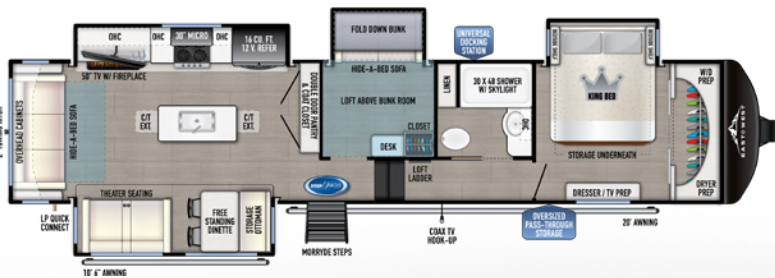
3700BH-OK

BUNK HOUSE HALF BATH & OUTDOOR KITCHEN

HITCH (LBS.): 2,645 UVV (LBS.): 12,584 CCC (LBS.): 4,061

LENGTH: 40' EXTERIOR HEIGHT: 13' 4" WIDTH: 96"

TANKS (F/G/B): 64 / 88 / 88 AWNING: 10'6" & 16'



3800MB

MID-BUNK ROOM W/ DOOR SIDE WINDOWS

HITCH (LBS.): 2,270 UVV (LBS.): 12,984 CCC (LBS.): 3,286

LENGTH: 41' 3" EXTERIOR HEIGHT: 13' 4" WIDTH: 96"

TANKS (F/G/B): 64 / 88 / 44 AWNING: 10'6" & 20'



3801MB-OK

MID-BUNK ROOM W/ OUTDOOR KITCHEN

HITCH (LBS.): 2,215 UVV (LBS.): 13,179 CCC (LBS.): 3,036

LENGTH: 41' 3" EXTERIOR HEIGHT: 13' 4" WIDTH: 96"

TANKS (F/G/B): 64 / 88 / 44 AWNING: 10'6" & 20'

OUR COMPANY TAKES PRIDE IN OUR FIVE GUIDING PRINCIPLES AND OUR CORPORATE PHILOSOPHY

which focuses on people working together to create high quality, value-added products that deliver the ultimate RV experience.

Sustainable Manufacturing

An important objective to our strategy and operations is to implement economically sound manufacturing processes to reduce/ recycle waste & conserve energy and natural resources.

Corporate & Social Responsibility

We foster a business environment in which we focus on and practice:
 - Ethical Labor Practices
 - Teamwork
 - Philanthropy
 - Volunteering

Culture & Values

We are a forward thinking company committed to fostering a culture of teamwork. By being transparent, we encourage our employees to think outside the box and make a difference!

Quality & Construction

Our team takes pride in each unit we build. Our manufacturing standards and point to point inspections ensure each EAST TO WEST brand is built to the same quality specifications every time.

Our Commitment

We strive to provide the highest quality products at the best possible price to our customers. We invite you to be a part of the EAST TO WEST family and we look forward to exceeding your expectations!



**24/7 EMERGENCY
ROADSIDE ASSISTANCE
WITH VEHICLE PURCHASE***

TOWING
JUMP-STARTS
TIRE CHANGES
FLUID DELIVERY
LOCKOUT
SERVICE

WINCH-OUT
MOBILE MECHANIC
TECHNICAL
SUPPORT
DEALER LOCATOR
SERVICES



*VALID FOR 1 YEAR FROM DATE OF PURCHASE



Learn More
Scan this barcode using a QR Reader on your smart phone to learn more about Forest River.



A Berkshire Hathaway company.

3000 COUNTY ROAD 6 WEST ELKHART, IN 46543
 WWW.EASTTOWESTRV.COM/ALTA 574.264.6664



PRE-DELIVERY INSPECTION FACILITY

20,000 square feet of quality assurance. The bare essentials for a premium product. This state-of-the-art facility gives immediate daily feedback to production for quality assurance in every unit built.

FREE MEMBERSHIP
to Forest River Owners' Group

www.forestriverfrog.com



SPECIFICATION DEFINITIONS

GVWR (Gross Vehicle Weight Rating) - is the maximum permissible weight of the unit when fully loaded. It includes all weights, inclusive of all fluids, cargo, optional equipment and accessories. For safety and product performance do NOT exceed the GVWR.

GAWR (Gross Axle Weight Rating) - is the maximum permissible weight, including cargo, fluids, optional equipment and accessories that can be safely supported by a combination of all axles.

UVW (Unloaded Vehicle Weight)* - is the typical weight of the unit as manufactured at the factory. It includes all weight at the unit's axle(s) and tongue or pin and LP Gas. The UVW does not include cargo, fresh potable water, additional optional equipment or dealer installed accessories.

*Estimated average based on standard build optional equipment.

CCC (Cargo Carrying Capacity)** - is the amount of weight available for fresh potable water, cargo, additional optional equipment and accessories. CCC is equal to GVWR minus UVW. Available CCC should accommodate fresh potable water (8.3 lbs per gallon). Before filling the fresh water tank, empty the black and gray tanks to provide for more cargo capacity.

** Estimated average based on standard build optional equipment

Each Forest River RV is weighed at the manufacturing facility prior to shipping. A label identifying the unloaded vehicle weight of the actual unit and the cargo carrying capacity is applied to every Forest River RV prior to leaving our facilities.

The load capacity of your unit is designated by weight, not by volume, so you cannot necessarily use all available space when loading your unit.

CUSTOMER SATISFACTION



www.ForestRiverBuyLocal.com

YOUR **BLACKTHORN** DEALER



All information contained in this brochure is believed to be accurate at the time of publication. However, during the model year, it may be necessary to make revisions and Forest River, Inc., reserves the right to make all such changes without notice, including prices, colors, materials, equipment and specifications as well as the addition of new models and the discontinuance of models shown in this brochure. Therefore, please consult with your Forest River dealer and confirm the existence of any materials, design or specifications that are material to your purchase decision. Litho. U.S.A FOR 2318 P&W: 2023.08.22