



# VIBE

**CAMP ANYWHERE**  
PKG

**2023 VIBE MIDWEST**  
**2023 VIBE WEST**



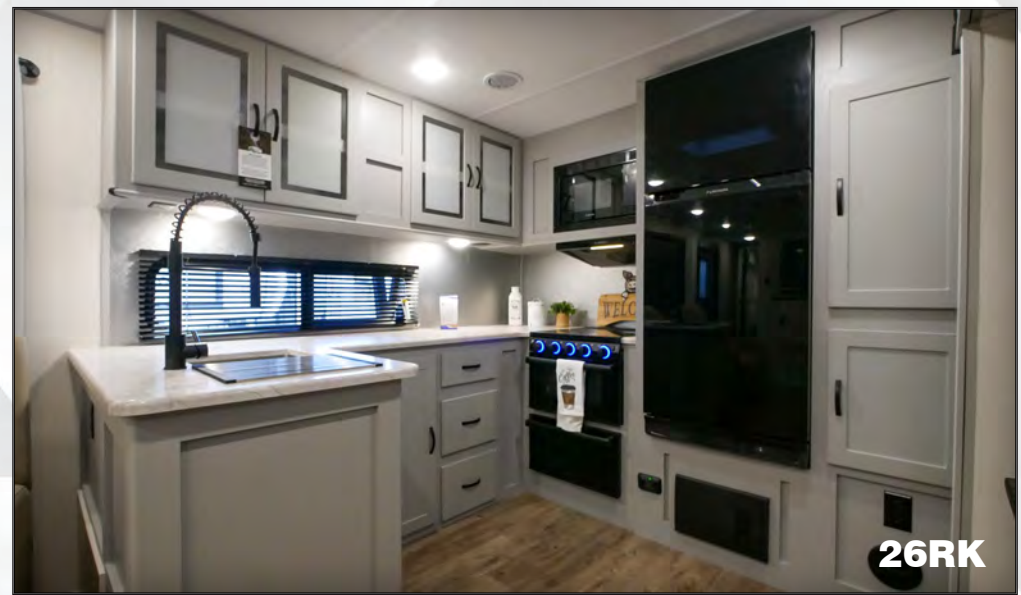
# VIBE

CAMP ANYWHERE  
PKG





34XL



26RK



26RB



28RL



**CONNECT WITH US**  
PLEASE USE THE CAMERA APP ON YOUR  
PHONE TO SCAN THIS QR CODE  
OR VISIT US AT [FORESTRIVER.COM/VIBE](https://www.forestriver.com/vibe)  
FOR MORE INFO AND SPECIFICATIONS



# STANDARDS & OPTIONS



**26RB**



**HIDDEN PANTRY  
STANDARD IN  
26RB AND 28BHE**

**26RB**

## EXTERIOR STANDARDS

- Hyper Lyte Construction
- Amazingly Light!!
- Gel Coat Fiberglass w/ Upgraded Graphics Package
- Laminated "Aluma Frame" Sidewalls/ Rearwall/Slideboxes
- 2" Laminated Floor
- 15,000 BTU Ducted A/C IPO 13.5K
- High efficiency A/C Cooling System (Larger Duct Work)
- Cable & Satellite Prep
- Digital TV Antenna w/ Booster
- Extra Large, Aluminum Framed, Pass-thru Storage
- One Touch Electric Awning
- LED Lighted Exterior Speakers (2)
- XL Grab Handle
- Radial Tires Filled w/ Nitrogen
- Heated and Enclosed Underbelly
- Power Stabilizer Jacks
- 2-20 lb. LP Bottles
- 30" Friction Hinge Entry Door
- Outside Kitchen on Select Models
- Aluminum Wheels
- Spare Tire
- Outside shower

## INTERIOR STANDARDS

- Frosted Glass in Kitchen Cabinets
- 3-Burner Cooktop w/ 17" Oven
- Large Single Bowl Stainless Steel Kitchen Sink
- Upgraded 10.7 cu. ft. Residential Refer
- 6 gal. G/E DSI Water Heater
- Dometic Pedal Flush Toilet
- Solid Surface Kitchen Countertops
- Deluxe Wood Booth Table Top
- 80" Interior Height
- Hard Doors To Bedrooms For Privacy (Not Curtains)
- Decorative Kitchen Back Splash
- Large Trash Can w/ Designated Out-of-the-way Area
- Upgraded Residential Style Carpet
- Full Extension Ball Bearing Drawer Guides
- Pot & Pan Storage Under Dinette Seats
- Tri-fold Sofa (Select Models)
- Skylight Over Kitchen
- Skylight Over Tub/Shower
- Theatre Seating (Select Models)

## INFINITY PACKAGE

- Modern Black Chef's Appliance Package
- 50" Entertainment TV's (most models) with built in Soundbar (Includes 2 zones, FM radio, Bluetooth)
- Stainless Steel Roll-up Sink Cover
- Blackout Roller Shades
- Black Tank Flush
- 200w Roof Mounted Solar Panel w/ Battery & Box
- Upgraded Spring Faucet
- Diamond Guard Front Radius
- Mor/ryde Fold Down Solid Step
- LED Awning Light
- Recessed Stove W/ Glass Cover
- New 3/4 Front Fiberglass Cap W/ LED Light
- Teddy Bear Series Bunk Mats (Bunkhouse Models)
- Decorative Window Treatments (Living Room Only)
- Solid Surface Countertops
- Heated Tank Pads

## OPTIONS

- Free Standing Table w/ 4 Chairs IPO Booth Dinette
- 50 Amp Service w/ Wire & Brace for 2nd A/C
- 2nd 13.5K A/C in Bedroom (Requires 50 Amp)

# BUNK HOUSE MODELS



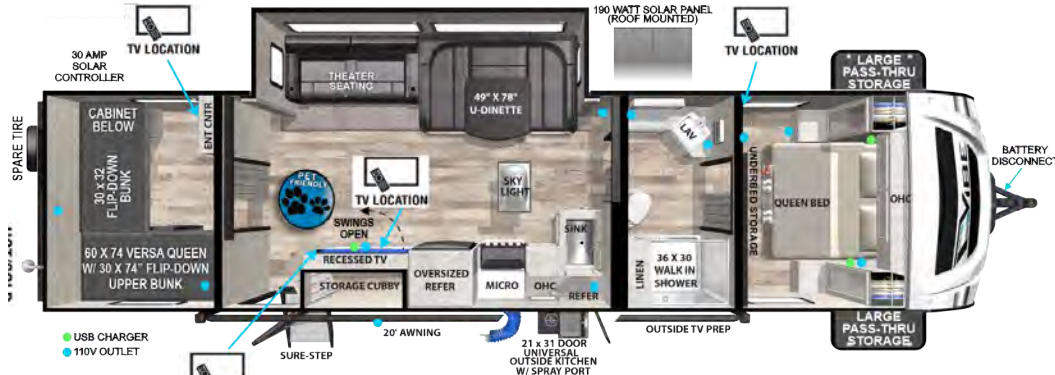
UVW: 5,245 lb.  
EXTERIOR LENGTH: 25' 7"

[CLICK HERE](#) **21BH**



UVW: 6,348 lb.  
EXTERIOR LENGTH: 33' 10"

[CLICK HERE](#) **26BH**



UVW: 7,298 lb.  
EXTERIOR LENGTH: 38'

[CLICK HERE](#) **28BHE**



UVW: 7,836 lb.  
EXTERIOR LENGTH: 38'3"

[CLICK HERE](#) **32BH**







UVW: 7,740 lb.  
EXTERIOR LENGTH: 38' 0"

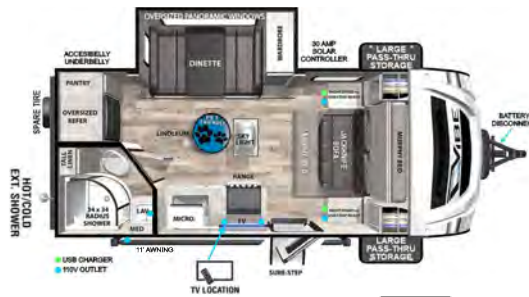


UVW: 8,164 lb.  
EXTERIOR LENGTH: 39' 5"





# COUPLES' COACHES



UVW: 4,730 lb.  
EXTERIOR LENGTH: 21' 11"

**CLICK HERE**  
**18RB**



UVW: 5,888 lb.  
EXTERIOR LENGTH: 29' 2"

**CLICK HERE**  
**25RK**



UVW: 6,353 lb.  
EXTERIOR LENGTH: 32'

**CLICK HERE**  
**26RB**



UVW: 6,664 lb.  
EXTERIOR LENGTH: 33' 6"

**CLICK HERE**  
**26RK**



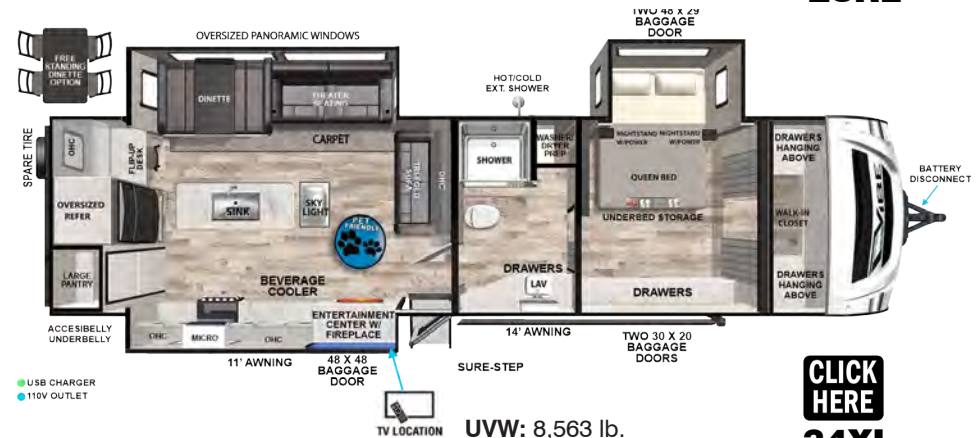
UVW: 7,096 lb.  
EXTERIOR LENGTH: 34' 5"

**CLICK HERE**  
**28RL**



UVW: 7,558 lb.  
EXTERIOR LENGTH: 36' 2"

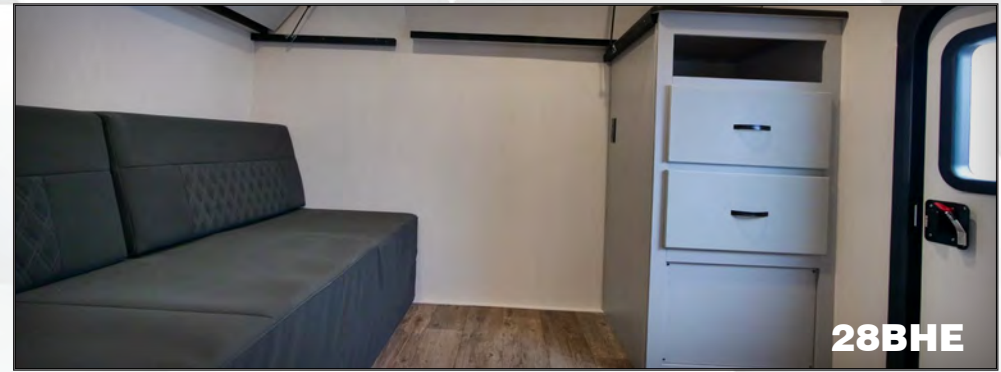
**CLICK HERE**  
**31ML**



UVW: 8,563 lb.  
EXTERIOR LENGTH: 39' 10"

**CLICK HERE**  
**34XL**





	UVW	HITCH	C.C.C.	LENGTH*	HEIGHT**	CAPACITY(GAL)		
<b>18RB</b>	4,730	503	1,525	21'11"	11'2"	40	30	30
<b>21BH</b>	5,245	636	2,355	25'7"	11'2"	40	60	30
<b>25RK</b>	5,888	805	1,712	29' 2"	11'2"	40	60	30
<b>26BH</b>	6,348	835	1,487	33'10"	11'2"	40	90	30
<b>26RB</b>	6,353	700	1,347	32'	11'2"	40	60	30
<b>26RK</b>	6,664	941	1,277	33'6"	11'2"	40	60	30
<b>28BHE</b>	7,298	910	2,412	38'	11'2"	40	60	30
<b>28RL</b>	7,096	821	2,525	34'5"	11'2"	40	60	30
<b>31ML</b>	7,558	990	2,232	36'2"	11'2"	40	90	30
<b>32BH</b>	7,836	1,074	2,038	38'3"	11'2"	40	60	60
<b>33BH</b>	7,740	936	1,996	38'	11'2"	40	60	30
<b>34BH</b>	8,164	972	1,608	39'5"	11'2"	40	60	30
<b>34XL</b>	8,563	1,070	1,307	39'10"	11'2"	40	79	30

\*Length Coupler to Bumper \*\*Height Top Of A/C

FRESH GRAY BLACK





## FROG™ the Forest River Owners' Group!

**FREE MEMBERSHIP**  
to Forest River Owners' Group



www.forestriverfrog.com

### CUSTOMER SATISFACTION



www.ForestRiverBuyLocal.com

**24/7 EMERGENCY  
ROADSIDE ASSISTANCE  
WITH VEHICLE PURCHASE\***

TOWING	WINCH-OUT
JUMP-STARTS	MOBILE MECHANIC
TIRE CHANGES	TECHNICAL SUPPORT
FLUID DELIVERY	DEALER LOCATOR SERVICES
LOCKOUT SERVICE	



\*VALID FOR 1 YEAR FROM DATE OF PURCHASE

### ADDITIONAL SPECIFICATIONS:

**GVWR (Gross Vehicle Weight Rating)** - is the maximum permissible weight of the unit when fully loaded. It includes all weights, inclusive of all fluids, cargo, optional equipment and accessories. For safety and product performance do NOT exceed the GVWR.

**GAWR (Gross Axle Weight Rating)** is the maximum permissible weight, including cargo, fluids, optional equipment and accessories that can be safely supported by a combination of all axles.

Each Forest River RV is weighed at the manufacturing facility prior to shipping. A label identifying the unloaded vehicle weight of the actual unit and the cargo carrying capacity is applied to every Forest River RV prior to leaving our facilities. The load capacity of your unit is designated by weight, not by volume, so you cannot necessarily use all available space when loading your unit.



### PRE-DELIVERY INSPECTION FACILITY

20,000 square feet of quality assurance. The bare essentials for a premium product. This state-of-the-art facility gives immediate daily feedback to production for quality assurance in every unit built.

Download the Forest River mobile app or visit our dynamic online manual to enhance your ownership experience. These interactive options provide incredible ease and insight into use, maintenance and enjoyment of your Forest River product. From "How-To" videos, pictures and illustrations of various components, systems and features, to fully searchable content and downloadable PDFs for individual component owner's manuals, answers are always just a click away.



View the online manual at <https://forestriverinc.com/Owners/Interactive-Manuals> or download our FREE app from the App Store or Google Play!

All information contained in this brochure is believed to be accurate at the time of publication. However, during the model year, it may be necessary to make revisions and Forest River, Inc., reserves the right to make all such changes without notice, including prices, colors, materials, equipment and specifications as well as the addition of new models and the discontinuance of models shown in this brochure. Therefore, please consult with your Forest River, Inc., dealer and confirm the existence of any materials, design or specifications that are material to your purchase decision.

©VIBE, a Division Of Forest River, Inc., a Berkshire Hathaway Company.  
All Rights Reserved.



**Learn More**  
Scan this barcode using a QR Reader on your smart phone to learn more about Forest River.



A Berkshire Hathaway company.

DEALER



# VIBE

CAMP ANYWHERE  
PKG





17RS



17RS



22RB



22RB



## CONNECT WITH US

PLEASE USE THE CAMERA APP ON YOUR PHONE TO SCAN THIS QR CODE OR VISIT US AT [FORESTRIVER.COM/VIBE](https://www.forestriver.com/vibe) FOR MORE INFO AND SPECIFICATIONS



# STANDARDS & OPTIONS

## EXTERIOR STANDARDS

### Single Axle Floorplans

- Walk On Truss Roof
- XTRM-PLY PVC Roofing with 86% Solar Reflectance (NO MAINTENANCE – STRONGEST RV ROOF ON THE MARKET)
- Aerodynamic Aluminum Front Cap
- E-Z Lube Axles
- Cable & Satellite Prep
- Digital TV Antenna w/Booster
- Extra Large, Aluminum Framed, Pass-thru Storage
- Gel Coat Fiberglass w/ Contemporary Graphics Package
- Heated and Fully-Enclosed Underbelly
- Hyper Lyte Construction - Amazingly Light!!
- Laminated "Aluma Frame" Side Walls. Rear Wall, Slide Out boxes and 2 1/4" Laminated Floor
- LED Lighted Exterior Speakers (2)
- One Touch Electric Awning
- Roadside Assistance
- Stabilizer Jacks
- XL Grab Handle
- 13.5 BTU Air Conditioning
- 1-20# LP Bottle

### Double Axle Floorplans

- Walk On Truss Roof
- XTRM-PLY PVC Roofing with 86% Solar Reflectance (NO MAINTENANCE – STRONGEST RV ROOF ON THE MARKET)
- Aerodynamic Fiberglass Front Cap
- Cable & Satellite Prep
- Digital TV Antenna w/Booster
- Ducted 13.5 BTU Air Conditioning
- E-Z Lube Axles
- Extra Large, Aluminum Framed, Pass-thru Storage
- Gel Coat Fiberglass

- w/ Contemporary Graphics Package
- Heated and Enclosed Underbelly
- Hyper Lyte Construction - Amazingly Light!!
- Laminated "Aluma Frame" Side Walls, Rear Wall, Slide Out boxes, and 2 1/4" Laminated Floor
- Led Lighted Exterior Speakers (2)
- High Efficiency A/C Cooling System (larger duct work)
- One Touch Electric Awning
- Roadside Assistance
- Stabilizer Jacks
- XL Grab Handle
- 2- 20# LP Bottles

## INTERIOR STANDARDS

### Single Axle Floorplans

- Decorative Kitchen Backsplash
- Deluxe Wood Booth Table Top
- Double Door 10+ cu. ft. 12V Refrigerator
- Dometic Pedal Flush Toilet
- Fantastic Fan in Bathroom
- Full Extension Ball Bearing Drawer Guides
- Full 80" Ceiling
- LED Lighting
- Solid Surface - Thermofoil Wrapped Kitchen Countertops
- Upgraded Residential Style Carpet
- Stainless Microwave
- 6 Gal. G/E DSI Water Heater
- Hard Doors to bedrooms for privacy (Not Curtains)

### Double Axle Floorplans

- Decorative Kitchen Backsplash
- Deluxe Wood Booth Table Top
- Dometic Pedal Flush Toilet
- Full Extension Ball Bearing Drawer Guides

- LED Lighting
- Full 80" Ceiling
- Glass in Kitchen Cabinets
- Hard Doors to Bedrooms for Privacy (not curtains)
- Large Trash Can w/ Designated Out-Of-The-Way Area
- Solid Surface - Thermofoil Wrapped Kitchen Countertops
- Upgraded Residential Style Carpet
- 3-Burner Cook Top w/Black Oven
- Stainless Microwave
- 6 Gal. G/E DSI Water Heater

## FAMILY CAMP PACKAGE

### Single Axle Floorplans

- Aluminum Wheels
- Battery Disconnect
- Black Tank Flush
- Coat Rack
- Enclosed Holding Tanks w/12v Heat Pads
- Flip-Up Countertop Extension (not available on all floorplans)
- Flush-Mount Kitchen Sink Cover
- Outside Hot and Cold Shower
- Radial Tires
- Second Bunk Window (not available on all floorplans)
- Sink Cover
- Skylight Over Tub/Shower
- Spare Tire & Carrier
- Teddy Bear Bunk Mats (not available on all floorplans)
- Upgraded Hidden Hinges on Cabinet Doors

### Double Axle Floorplans

- Aluminum Wheels
- Battery Disconnect
- Black Tank Flush
- Coat Rack
- Fantastic Fan
- Flip-Up Countertop

- Extension (not available on all floorplans)
- Flush-Mount Kitchen Sink Cover
- Outside Hot and Cold Shower
- Radial Tires
- Second Bunk Window (not available on all floorplans)
- Skylight Over Tub
- Spare Tire & Carrier
- Teddy Bear Bunk Mats (not available on all floorplans)
- Upgraded Hidden Hinges on Cabinet Doors
- 2 - Pots/Pans Drawers

## PREMIUM PACKAGE

### Single Axle Floorplans

- Backup Camera Prep
- Portable Bluetooth Stereo Speaker
- Decorative Window Treatments (dinettes only)
- LED Awning Light
- Magnetic Latches On Access Doors
- Roller Shades With Automatic Stop
- Recessed 2-Burner Cooktop w/Glass Cover
- Seamless Countertop w/ Undermount Single Bowl Stainless Steel Sink
- Solar Prep
- USB Port Package
- Upgraded Designer Kitchen Faucet
- Double Axle Floorplans
- Backup Camera Prep
- Bluetooth MP3/DVD/CD/FM w/Sound Bar
- Decorative Window Treatments (Livingroom only)
- Electric Fireplace w/ Crystals (not available on all floorplans)
- LED Awning Light
- Flat Screen SMART TV (sizes vary by model)

- LED Lights
- Magnetic Latches On Access Doors
- Outside Kitchen (n/a on some models)
- Power Tongue Jack
- Roller Shades With Automatic Stop
- Seamless Countertop w/Undermount Single Bowl Stainless Steel Sink & Designer Pull-Out Kitchen Faucet
- Solar Prep
- Solidstep Triple Step (main entrance only)
- True Stabilizer Jacks w/JT Strong Arms
- Upgraded Appliance Package
- USB Port Package
- Upgraded Pillowtop Mattress
- Friction Hinge Entry Door

## OPTIONS

- 200W Solar with 30amp Controller (Expandable up to 600watts)
- Back Pack Rack
- Recliners in place of Dinette
- Free-Standing Table & Chairs
- Tri-Fold Sofa Sleeper
- 2nd 13.5k A/C In Bedroom w/50 AMP Service
- 15k BTU Ducted A/C IPO 13/5k
- 30# LP Bottles w/Cover
- 50 AMP Service w/Wire & Brace for 2nd A/C

## DARE TO COMPARE

Vibe West is committed to offering the BEST value in the RV market today. With over 100 value packed features, Vibe West sets the standard for excellence. These industry leading features are only a few examples of what our competitors leave out.

1. 2 1/4 inch bonded floor with 1/2" dynaspan® decking (25 year warranty).
2. Aluminum framed laminated sidewalls and slides
3. Screwed and glued cabinets with residential steel ball bearing drawer guides on all of our drawers.
4. 200 watt expandable solar with 30 amp controller. (expandable up to 600 watts)
5. Best in class panoramic windows.
6. "Extreme Barrier" insulation. • Furnace heat to basement. • Holding tanks comes standard with r-7 fiberglass insulation & r-38 reflective astro foil insulation. • Fully enclosed underbelly • 12 volt thermostatically controlled heat pads on all holding tanks • Vacuum-bonded & pinch rolled sidewalls with r-10 high-density block foam insulation in slides • Reflective astro-foil in roof, front wall, slide-out floor and under each holding tank • Double r-7 fiberglass insulation in roof and under each holding tank • 30,000 btu furnace • Exterior vented attic for breathable roof • Electric fireplace w/thermostat
7. Wide stance axles – best towing period!
8. JT strong arm jack stabilizers – because motion sickness belongs in the ocean! (dual axle only)
9. 12 volt oversized refrigerator
10. Walk on truss roof with xtrm-PLY PVC Roofing - 86% Solar Reflectance

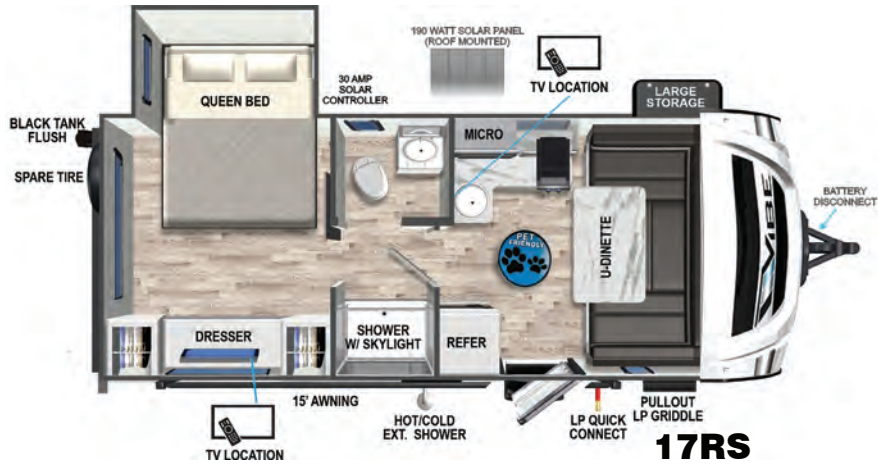
# SINGLE AXLE TRAVEL TRAILERS



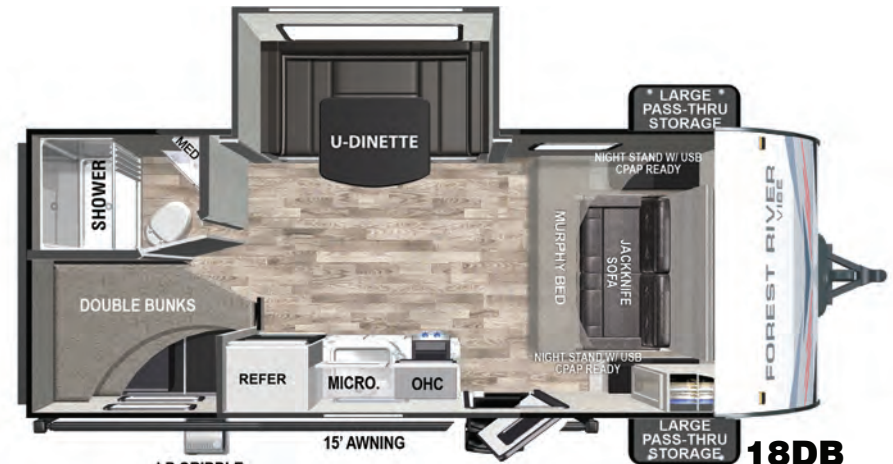
**16RB**



**17DB  
BUNK HOUSE**



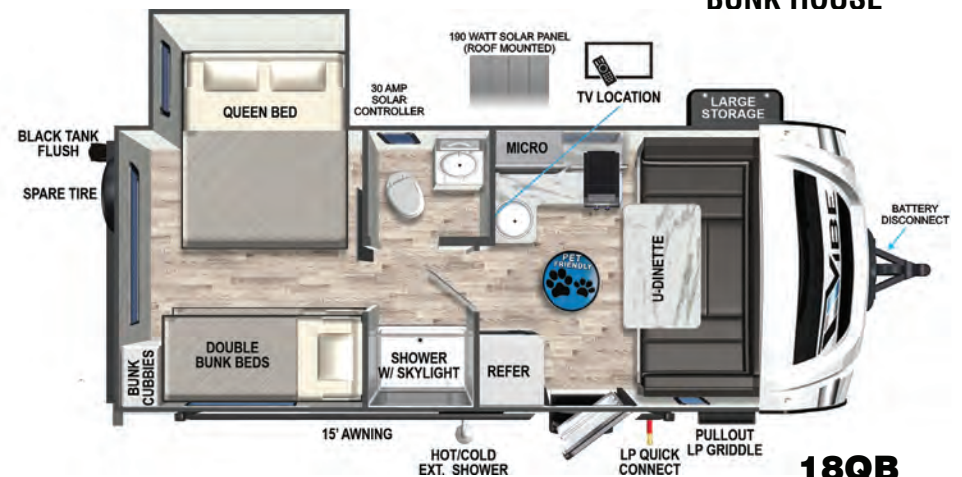
**17RS**



**18DB  
BUNK HOUSE**



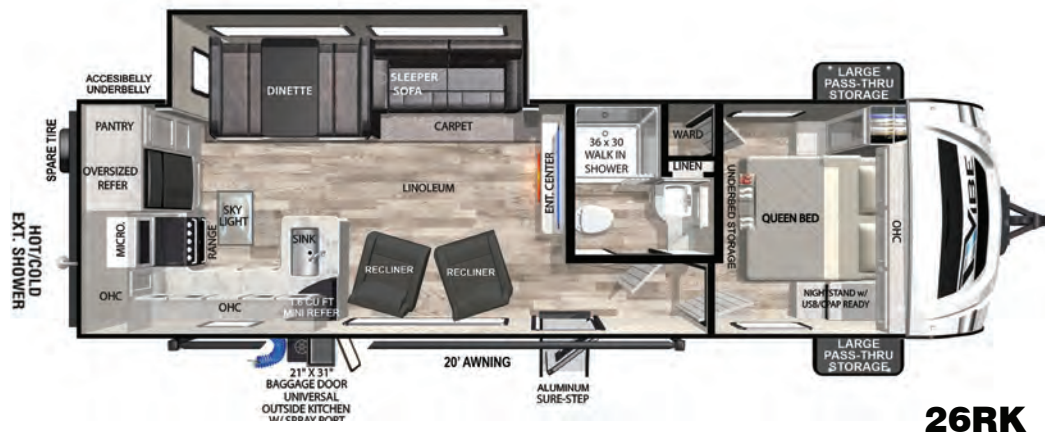
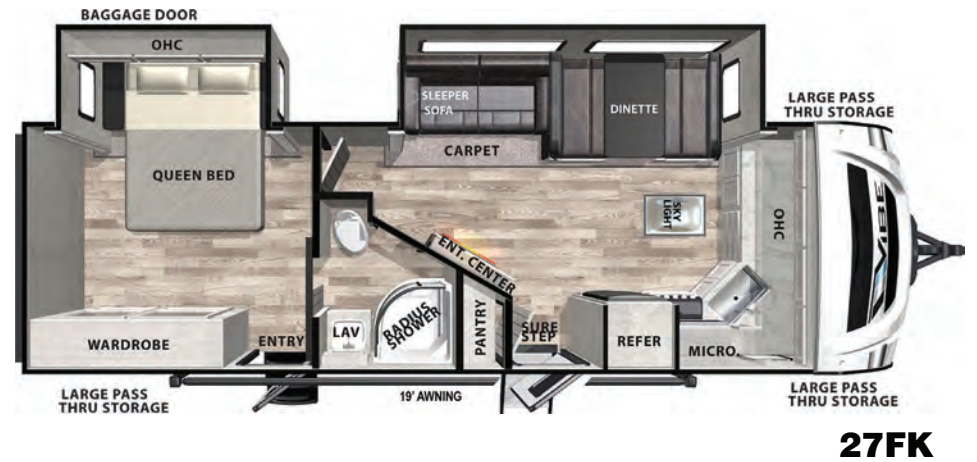
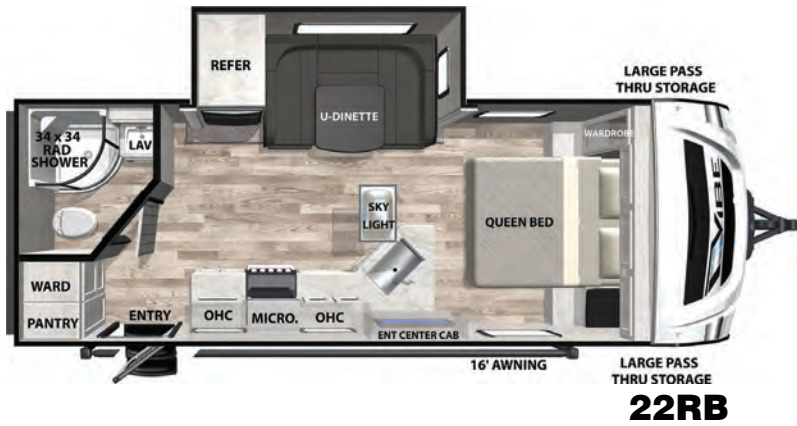
**24DB**



**18QB  
BUNK HOUSE**

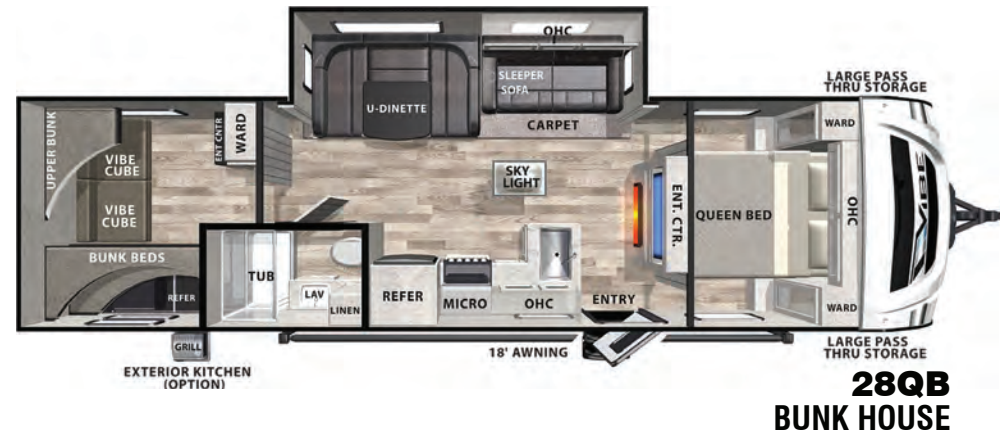
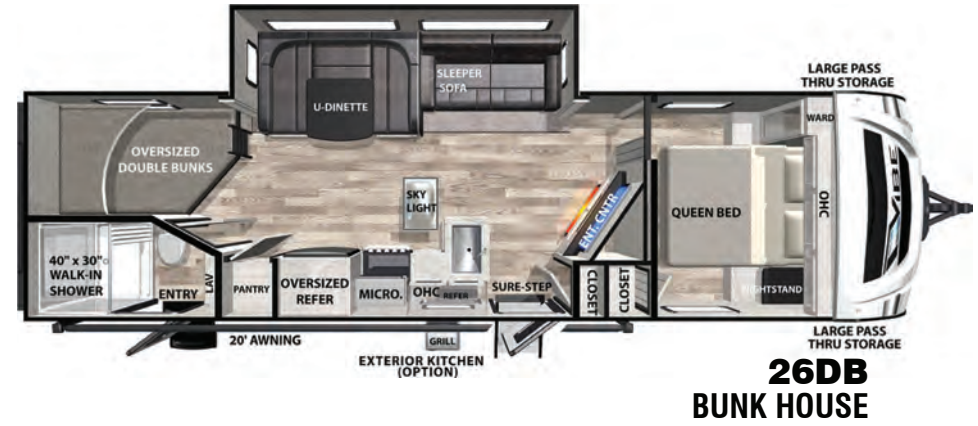
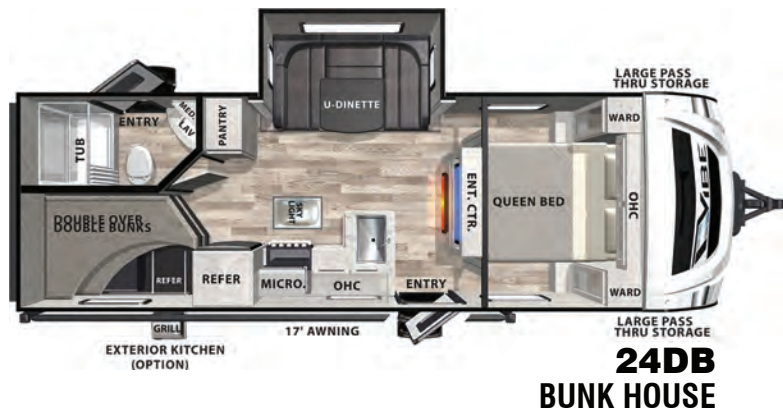


# DOUBLE AXLE TRAVEL TRAILERS





# DOUBLE AXLE TRAVEL TRAILERS







FLOORPLAN	UVW	C.C.C.	LENGTH*	HEIGHT**	CAPACITY(GAL)		
<b>16RB</b>	3,379 lb.	1,411 lb.	21'11"	10'8"	38	27	32
<b>17DB</b>	3,768 lb.	1,114 lb.	22'5"	10'8"	38	27	32
<b>17RS</b>	4,068 lb.	914 lb.	T23'1"	10'8"	39	27	27
<b>18DB</b>	4,113 lb.	805 lb.	22'11"	10'8"	39	27	32
<b>18QB</b>	3,992 lb.	935 lb.	23'1"	10'8"	39	27	27
<b>22RB</b>	5,372 lb.	2,234 lb.	25'10"	10'11"	38	64	32
<b>24DB</b>	5,741 lb.	2,018 lb.	28'6"	10'11"	38	64	32
<b>25RK</b>	5,800 lb.	1,834 lb.	29'7"	10'10"	38	66	33
<b>26DB</b>	6,867 lb.	2,736 lb.	34'2"	10'10"	38	96	32
<b>26RK</b>	6,684 lb.	2,884 lb.	34'5"	10'10"	38	64	32
<b>27FK</b>	7,227 lb.	2,576 lb.	32'5"	11'2"	38	96	32
<b>28QB</b>	6,702 lb.	2,994 lb.	35'2"	11'	38	66	33

\*Length Coupler to Bumper \*\*Height Top Of A/C

FRESH GRAY BLACK





**FROG™ the Forest  
River Owners' Group!**

**FREE MEMBERSHIP**  
to Forest River Owners' Group  
www.forestriverfrog.com



**CUSTOMER SATISFACTION**



[www.ForestRiverBuyLocal.com](http://www.ForestRiverBuyLocal.com)



**24/7 EMERGENCY  
ROADSIDE ASSISTANCE  
WITH VEHICLE PURCHASE\***

TOWING	WINCH-OUT
JUMP-STARTS	MOBILE MECHANIC
TIRE CHANGES	TECHNICAL
FLUID DELIVERY	SUPPORT
LOCKOUT	DEALER LOCATOR
SERVICE	SERVICES




\*VALID FOR 1 YEAR FROM DATE OF PURCHASE

**ADDITIONAL SPECIFICATIONS:**

**GVWR (Gross Vehicle Weight Rating)** - is the maximum permissible weight of the unit when fully loaded. It includes all weights, inclusive of all fluids, cargo, optional equipment and accessories. For safety and product performance do NOT exceed the GVWR.

**GAWR (Gross Axle Weight Rating)** is the maximum permissible weight, including cargo, fluids, optional equipment and accessories that can be safely supported by a combination of all axles.

Each Forest River RV is weighed at the manufacturing facility prior to shipping. A label identifying the unloaded vehicle weight of the actual unit and the cargo carrying capacity is applied to every Forest River RV prior to leaving our facilities. The load capacity of your unit is designated by weight, not by volume, so you cannot necessarily use all available space when loading your unit.



**PRE-DELIVERY INSPECTION FACILITY**  
20,000 square feet of quality assurance. The bare essentials for a premium product. This state-of-the-art facility gives immediate daily feedback to production for quality assurance in every unit built.

Download the Forest River mobile app or visit our dynamic online manual to enhance your ownership experience. These interactive options provide incredible ease and insight into use, maintenance and enjoyment of your Forest River product. From "How-To" videos, pictures and illustrations of various components, systems and features, to fully searchable content and downloadable PDFs for individual component owner's manuals, answers are always just a click away.



View the online manual at <https://forestriverinc.com/Owners/Interactive-Manuals> or download our FREE app from the App Store or Google Play!

All information contained in this brochure is believed to be accurate at the time of publication. However, during the model year, it may be necessary to make revisions and Forest River, Inc., reserves the right to make all such changes without notice, including prices, colors, materials, equipment and specifications as well as the addition of new models and the discontinuance of models shown in this brochure. Therefore, please consult with your Forest River, Inc., dealer and confirm the existence of any materials, design or specifications that are material to your purchase decision.

©VIBE, a Division Of Forest River, Inc., a Berkshire Hathaway Company.  
All Rights Reserved.



**Learn More**  
Scan this barcode using a QR Reader on your smart phone to learn more about Forest River.



A Berkshire Hathaway company.

**DEALER**