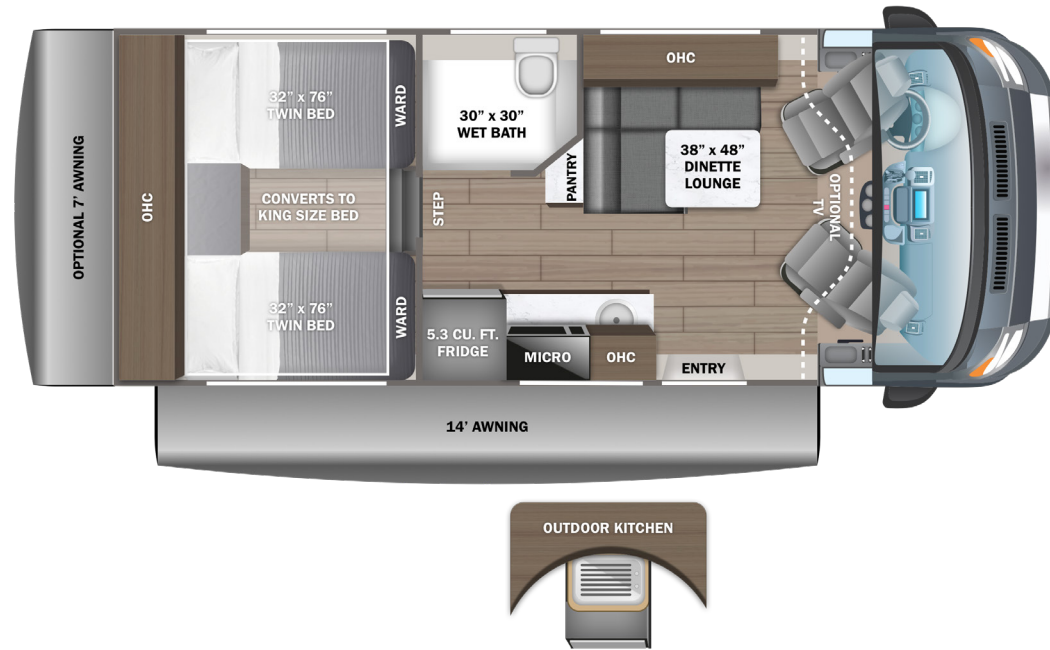


# 2025 CONDOR

*Gas Class B Motorhome*

22T



## EXTERIOR SELECTIONS



Standard Graphics



Graphics Delete Option

## CUSTOMER VALUE PACKAGE

E-Z Drive™: Computer-balanced driveshaft, heavy-duty rear stabilizer bar, standard front stabilizer bar, Hellwig® helper springs and rubber isolation body mounts  
 One-piece, seamless, fiberglass front cap  
 Van Compass™ front and rear lift kit  
 3.9kWh 12V lithium battery  
 2,000W inverter  
 360W roof mounted solar panel with dual controller  
 Expandable side port with second dual bank controller for solar  
 All-terrain tires  
 Backup camera  
 Aqua View® SHOWERMISER™ water management system  
 Internal holding tanks

## STANDARD CHASSIS EQUIPMENT

Ford® Transit 350HD AWD chassis  
 156 in. wheelbase  
 GVWR - 11,000 lb.  
 GCWR - 15,000 lb.  
 3.5L EcoBoost V6 310 HP engine with 400 ft.-lb. torque  
 10-speed transmission  
 3.73 limited slip axle  
 250-amp alternator  
 Matte black aluminum wheels  
 Power anti-lock brakes with power steering  
 (2) 12V AGM chassis batteries (70 amp-hr)  
 31 gal. fuel tank (gas)

## STANDARD EXTERIOR EQUIPMENT

TuffShell™ vacuum-bond laminated roof, floor and sidewalls  
 Bead-foam insulation (R-24 max roof, R-9 max floor, R-8 max walls)  
 One-piece, seamless, fiberglass roof  
 Fiberglass exterior walls with partial paint and vinyl graphics  
 Dual-pane acrylic windows  
 Heated garage with L-track and (2) 120V charging ports  
 Electric patio awning with auto-retract and LED lights  
 Roof rack  
 Collapsible exterior ladder  
 Daytime running headlamps  
 Cable TV hookup with RG-6 coax  
 Starlink satellite internet system  
 Winegard® Connect 2.0 4G/Wi-Fi/digital TV antenna  
 2,800W gas generator with auto-gen start  
 Portable solar plug

30-amp electrical service with detachable power cord  
 120V exterior outlet  
 6 gal. propane tank (20 lb.)  
 LP quick-connect hookup  
 LED-lit holding tank valves  
 Winterization drain system  
 12V demand water pump  
 Water filtration system  
 Outside shower

## STANDARD COCKPIT EQUIPMENT

12 in. SYNC 4 HD/NAV/IACC multi-function display  
 4-way swivel driver and passenger seats  
 Tilt and telescoping steering wheel  
 Power-adjusting, heated side-view mirrors  
 Intelligent adaptive cruise control  
 Lane-keeping system  
 Forward collision warning  
 Pre-collision assist with automatic emergency braking (AEB)  
 Post-collision braking  
 SOS Post Crash Alert System™  
 Driver and passenger airbags  
 Safety Canopy® side-curtain airbags  
 Ford® AdvanceTrac® with RSC® (roll stability control)  
 Side wind stabilization  
 Hill start assist  
 SecuriLock® passive anti-theft system with engine immobilizer  
 Autolocking drive away with crash unlocking  
 Remote keyless entry  
 FordPass™ Connect  
 Tire pressure monitoring system (TPMS)  
 Rain-sensing wiper system  
 Automatic high-beam headlights  
 Wiper-activated headlights  
 Power windows and door locks  
 Privacy shades for cab windows

## STANDARD INTERIOR EQUIPMENT

Custom-molded ABS cab-over with storage  
 Soft-touch vinyl ceiling  
 High-intensity LED ceiling lights  
 Residential vinyl flooring  
 Firefly Multiplex system - wall-mounted touchscreen and mobile app for total coach control  
 13,500 BTU air conditioner  
 17,000 BTU Timberline Binar 5D hydronic heating system with LED touchscreen control

Cassette screens and night shades  
 JBL® Flip 6 removable wireless Bluetooth speaker  
 Adjustable table with multiple mounts  
 5.3 cu. ft. 12V refrigerator  
 Induction cooktop  
 Convection microwave  
 Stainless steel sink  
 Pressed countertops  
 (2) twin-size beds with filler cushion converts to king-size bed  
 All-in-one wet bath with shower and cassette toilet  
 Shower with curtain surround  
 Powered roof vent in wet bath  
 Medicine cabinet with mirror  
 Seatbelts for driver/passenger seats and select cab locations  
 Smoke alarm  
 Carbon monoxide detector  
 Fire extinguisher

## OPTION

32 in. Smart LED HD TV with cab and bedroom mounts  
 7 ft. rear awning  
 Pull-out exterior kitchen



At Entegra Coach, we build our RVs to handle every adventure, then back them with our industry-leading 2+3 limited warranty. Our 2-year limited warranty has you covered for 2 camping seasons. That's 730 days. In addition, our 3-year structural limited warranty has you covered for 3 camping seasons or 1,095 days. You won't find a better limited warranty in the business, because the only strings we attach are those that deliver the ultimate in reliability. For a copy of our 2-year limited + 3-year structural limited warranty with complete terms and conditions, please contact your local Entegra Coach dealer.

It is important for your safety and enjoyment that you are aware of the weights and tow ratings of the RV you select. Consult a competent advisor for questions or advice. Whether you are new to RVing or a veteran, get a feel for the performance of your RV before heading out on the roadways. When you tow a vehicle with your RV, you must drive differently than when you drive a single vehicle. Practice hooking up, driving, backing up and braking in a safe environment or seek out professional instruction. Jayco affixes a weight label to each RV which lists weight information for that vehicle. Refer to that label to verify the vehicle will meet your requirements. Gross Vehicle Weight Rating (GVWR): The maximum permissible weight of the motorhome, including the Unloaded Vehicle Weight (UUV) plus passengers, personal items, all cargo, fluids, options and dealer-installed accessories. The GVWR is equal to or greater than the sum of the UUV and the Cargo Carrying Capacity. Gross Combined Weight Rating (GCWR): The maximum allowable combined weight of the motorhome used as a tow vehicle and the attached towed vehicle.

Floorplan	GVWR (lbs.)	GCWR (lbs.)	Wheel Base	Overall Length	Exterior Height w/ A/C & Satellite	Exterior Width	Interior Height	Fresh Water Capacity (gal.)	Grey Waste Water Capacity (gal.)	Black Waste Water Capacity (gal.)
22T	11,000	15,000	156"	22' 11"	11' 1"	85"	80"	53	51	4.75



Part of Jayco Family of Companies

Entegra Coach, Inc., P.O. Box 460, Middlebury, IN 46540, www.entegracoach.com. See dealer for further information and prices. All information in this brochure is the latest available at the time of publication approval. Entegra Coach reserves the right to make changes and to discontinue models without notice or obligation. Photos in this brochure may show optional equipment and props for photography purposes. RVs built for sale in Canada may differ to conform to Canadian codes. ©2025 Entegra Coach, Inc. Printed in U.S.A. 2032941



entegracoach.com/condor

LEGACY ISN'T LEFT,  
IT'S LIVED.