



RECREATIONAL  
VEHICLES

# SPORTSMEN SE

TRAVEL TRAILERS & TOY HAULERS



24TRKKSE

## KEY FEATURES:

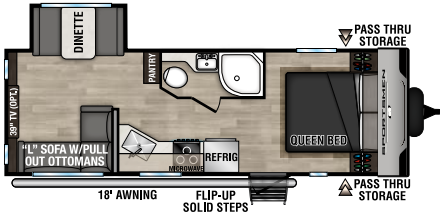
- Solid folding step
- Power tongue jack
- Large folding grab handle
- Full glass entry door
- Screen Defender in entry door

Look no further than the Sportsmen SE if you are seeking an affordable RV with all the amenities of home. Sportsmen SE allows families to start creating memories together while keeping everyone happy!



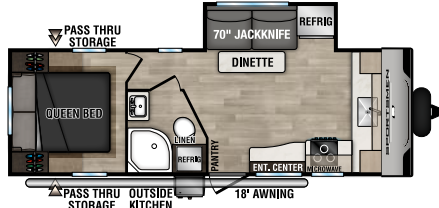
# 2024 SPORTSMEN SE

## TRAVEL TRAILERS



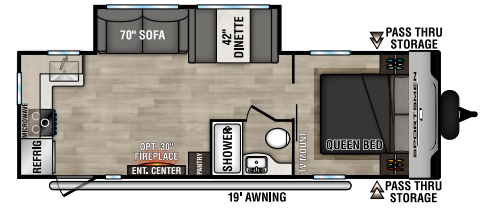
### 221RESE

UVW - 5,210 | Exterior Length - 27' 2" | Sleeps - 6



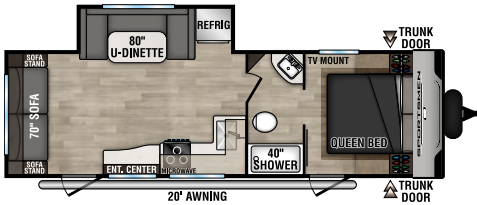
### 231FKKSE

UVW - 5,300 | Exterior Length - 27' 5" | Sleeps - 4



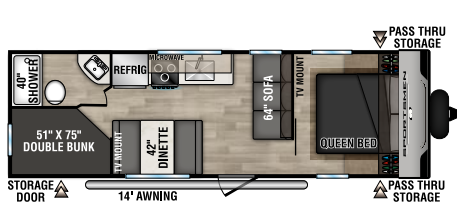
### 241RKSE

UVW - 5,500 | Exterior Length - 28' 2" | Sleeps - 5



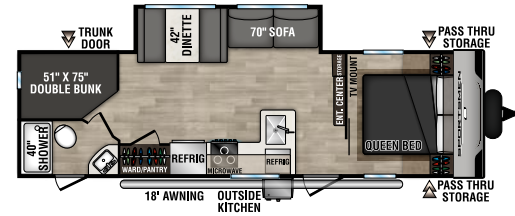
### 251RSSE

UVW - 5,720 | Exterior Length - 29' 7" | Sleeps - 6



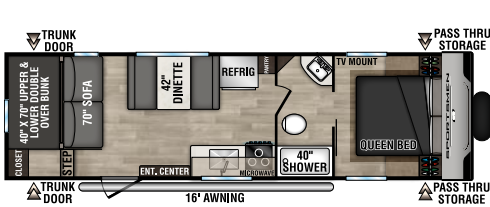
### 260BHSE

UVW - 4,870 | Exterior Length - 28' 7" | Sleeps - 9



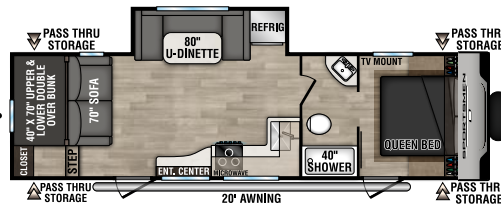
### 261BKSE

UVW - 6,090 | Exterior Length - 31' 7" | Sleeps - 9



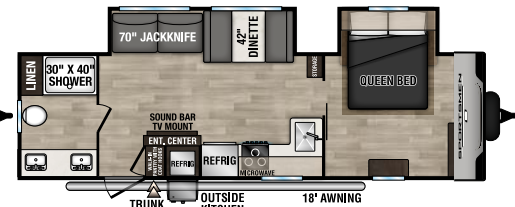
### 270BHSE

UVW - 5,180 | Exterior Length - 31' 5" | Sleeps - 6



### 281BHSE

UVW - 6,160 | Exterior Length - 32' 7" | Sleeps - 9



### 292RBKSE

UVW - 6,690 | Exterior Length - 32' 2" | Sleeps - 5

### TRAVEL TRAILERS

Sportsmen SE	221RESE	231FKKSE	241RKSE	251RSSE	260BHSE	261BKSE	270BHSE	281BHSE	292RBKSE
UVW (Unloaded Vehicle Weight)*	5,210	5,300	5,500	5,720	4,870	6,090	5,180	6,160	6,690
Dry Hitch Weight*	570	900	650	720	630	840	790	820	920
Dry Axle Weight*	4,640	4,400	4,850	5,000	4,240	5,250	4,390	5,340	5,770
CCC (Cargo Carrying Capacity)	1,790	1,700	1,500	1,280	2,130	910	1,820	1,840	1,310
GVWR	7,000	7,000	7,000	7,000	7,000	7,000	7,000	8,000	8,000
Interior Height	78"	78"	78"	78"	78"	78"	78"	78"	78"
Exterior Height w/ A/C	10' 8"	10' 8"	10' 8"	10' 8"	10' 8"	10' 8"	10' 8"	10' 8"	10' 10"
Exterior Width	96"	96"	96"	96"	96"	96"	96"	96"	96"
Exterior Length**	27' 2"	27' 5"	28' 2"	29' 7"	28' 7"	31' 7"	31' 5"	32' 7"	32' 2"
Refrigerator (cu. feet)	10	10	10	10	10	10	10	10	10
Water Heater Cap. (on-demand tankless)	***	***	***	***	***	***	***	***	***
Fresh Water Cap. (gal.)	45	45	45	45	45	45	45	45	45
Waste Water Cap. (gal.)	32	32	32	32	32	32	32	32	32
Gray Water Cap. (gal.)	32	64	64	32	32	32	32	32	64
LP Gas Cap. (lbs.)	40	40	40	40	40	40	40	40	40
Furnace BTUs (1,000s)	30	20	30	30	30	30	30	30	30
Tire Size	14"	14"	14"	14"	14"	14"	14"	15"	15"
Awning	18'	18'	19'	20'	14'	18'	16'	20'	18'

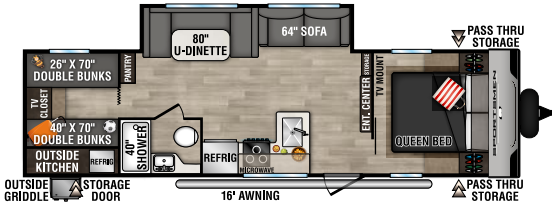
\*This weight reflects the rolling average unit weight for each model. Your trailer weight will vary according to optional equipment.

\*\* Exterior length is measured from rear of bumper to leading edge of coupler.

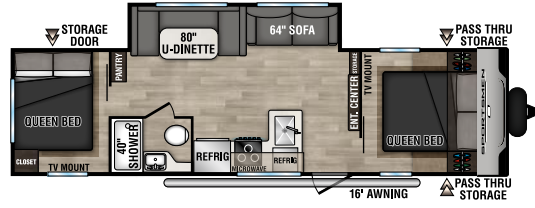
\*\*\*Infinite supply.

# 2024 SPORTSMEN SE

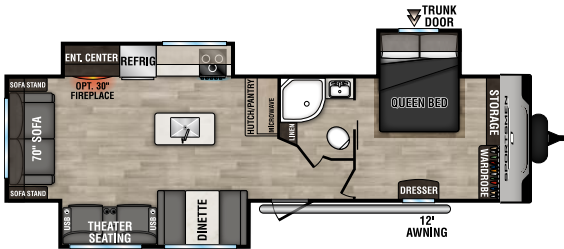
## TRAVEL TRAILERS



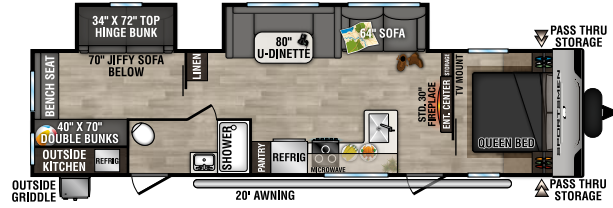
**301BHKSE** U VW - 6,310 | Exterior Length - 32' 10" | Sleeps - 10



**301DBSE** U VW - 6,180 | Exterior Length - 32' 10" | Sleeps - 8

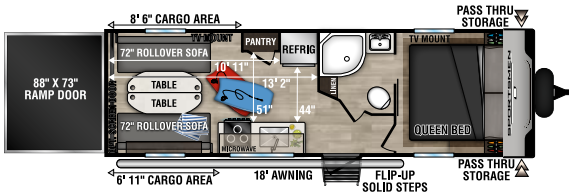


**303QBSE** U VW - 7,600 | Exterior Length - 34' 7" | Sleeps - 5

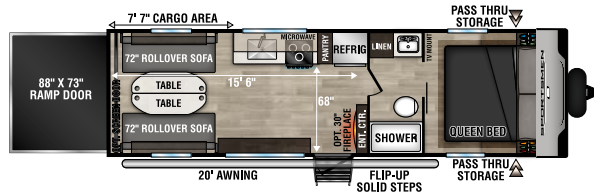


**332BHKSE** U VW - 7,440 | Exterior Length - 37' 3" | Sleeps - 10

## TOY HAULERS



**250THSE** U VW - 5,300 | Exterior Length - 29' 1" | Sleeps - 6



**270THSE** U VW - 5,400 | Exterior Length - 30' 10" | Sleeps - 6

### TRAVEL TRAILERS

### TOY HAULERS

	301BHKSE	301DBSE	303QBSE	332BHKSE	250THSE	270THSE
<b>Sportsmen SE</b>						
U VW (Unloaded Vehicle Weight)*	6,310	6,180	7,600	7,440	5,300	5,400
Dry Hitch Weight*	870	910	930	970	770	1,000
Dry Axle Weight*	5,440	5,270	6,670	6,470	4,530	4,400
CCC (Cargo Carrying Capacity)	1,690	1,820	1,200	1,360	3,500	3,400
GVWR	8,000	8,000	8,800	8,800	8,800	8,800
Interior Height	78"	78"	78"	78"	78"	78"
Exterior Height w/ A/C	10' 8"	10' 8"	11'	10' 10"	10' 8"	10' 8"
Exterior Width	96"	96"	96"	96"	96"	96"
Exterior Length**	32' 10"	32' 10"	34' 7"	37' 3"	29' 1"	30' 10"
Refrigerator (cu. feet)	10	10	10	10	7	7
Water Heater Cap. (on-demand tankless)	***	***	***	***	***	***
Fresh Water Cap. (gal.)	45	45	45	45	45	45
Waste Water Cap. (gal.)	32	32	32	32	32	32
Gray Water Cap. (gal.)	32	32	32	32	32	32
LP Gas Cap. (lbs.)	40	40	40	40	40	40
Furnace BTUs (1,000s)	30	30	30	30	30	30
Tire Size	15"	15"	15"	15"	15"	15"
Awning	16'	16'	12'	20'	18'	20'

\*This weight reflects the rolling average unit weight for each model. Your trailer weight will vary according to optional equipment. \*\* Exterior length is measured from rear of bumper to leading edge of coupler. \*\*\*Infinite supply.

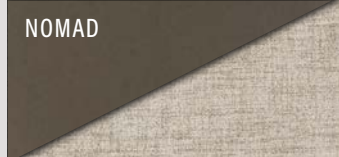


# 2024 SPORTSMEN SE

## STANDARDS

- KZ Exclusive Tough Shield Exterior Metal
- 1-Piece, Seamless, Walk-on, Tufflex Roofing Material w/Lifetime Warranty
- 3/8" Fully Walk-On Roof Decking
- Radius Truss Roof Rafters
- Awning w/Drip Rail & Spouts
- Radius Entry Door
- Extra-Large Radius Baggage Doors
- Tinted Windows
- Diamond Plate Rock Guard
- Rear Bumper w/Sewer Hose Storage
- (2) 20# LP Bottles
- 30 AMP Service
- Cable Hookup
- Power Vent in Bath
- Shower Surround
- Reversible Quilted Comforter
- Digital TV Antenna w/Booster
- 13,500 BTU A/C
- Water Heater Bypass Kit
- Large Overhead Cabinets
- Roller Ball Bearing Drawer Glides
- LED Interior Lighting
- Linoleum Throughout
- Monitor Panel
- 3-Burner Cooktop
- Range Hood w/12V Light & Exhaust Fan
- Microwave w/Turntable

NOTE: Options and packages can be found on the website



### CLIMATE PACKAGE



**CLIMATE PACKAGE** adds insulation so you can extend the camping season, with a fully enclosed, insulated, and heated underbelly to protect tanks and pipes (R-9\* sidewalls, R-20\* roof, and R-24\* floor).  
\*Calculated R-Value



**TUFFLEX ROOFING**  
by Dicor Products LIFETIME WARRANTY!

### RV AIRFLOW SYSTEMS™

**RV AIRFLOW SYSTEMS** provides faster and up to 40% more efficient cooling. Air is consistently distributed throughout the RV.



**BACKUP CAMERA PREP** is standard.



**OUTSIDE SHOWER** with hot and cold faucets.



Experience more freedom and adventure with our optional solar package. Get the convenience of powering your electronics any time, anywhere. **OPTIONAL "OFF THE GRID" SOLAR PACKAGE** includes (1) 110W flexible solar panel, 30A MPPT solar charge controller and pure sine wave inverter. (Powers all GFIs & 110V outlet next to bed & outside refrigerator.)



You'll appreciate the huge **PASS-THRU STORAGE AREAS** offered on most SEs.

Dealer: \_\_\_\_\_

