

SOLAR STANDARD
ON ALL UNITS

ULTRA LITE & NANO TRAVEL TRAILERS

APEX



Emerald Rated


Coachmen®
Recreational Vehicles
A division of Forest River, Inc.

APEX

NANO

HIT THE ROAD TO ADVENTURE WITH
APEX'S LIGHT-WEIGHT TOWABLE RVS



208 BHS



203 RBK / 208 BHS



203 RBK / 208 BHS



208 BHS

LIGHT & FUN

Travel is easy with Apex style and comfort. These narrow-body trailers are ideal for towing with half ton trucks and most smaller SUVs, with weights ranging from 3,000 lbs. up to 4,500 lbs. All Nano floor plans are designed with rich, warm interiors, full-sized bathrooms, contemporary cabinetry, fabrics and flooring.

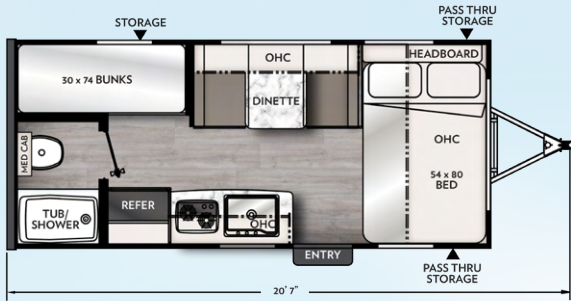
The 186 BH, 203 RBK, and 208 BHS come standard with a 60" x 80" queen bed, or you can add an optional Murphy Bed with Jack Knife sofa, shown at right.



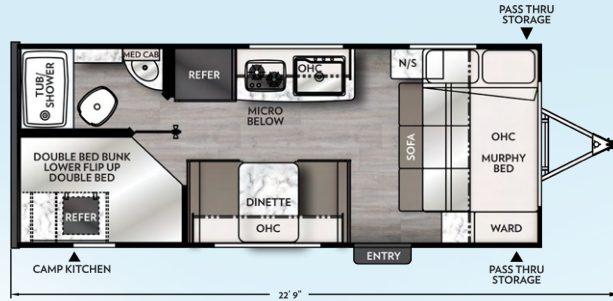
The lower double bunk in 208 BHS flips up to access a large storage area.



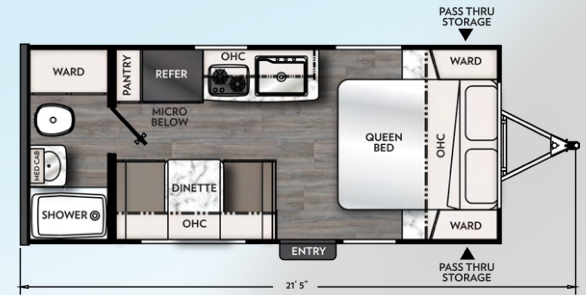
208 BHS



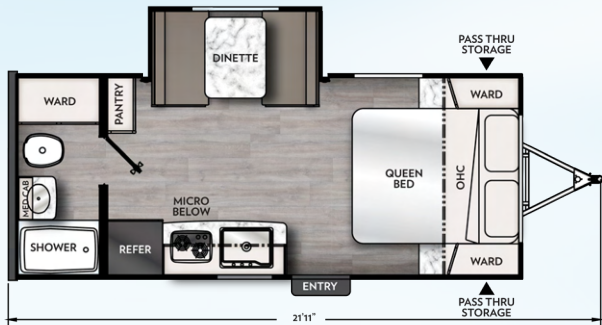
185 BH



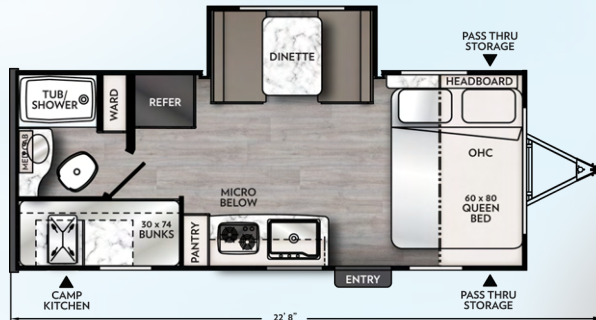
186 BH



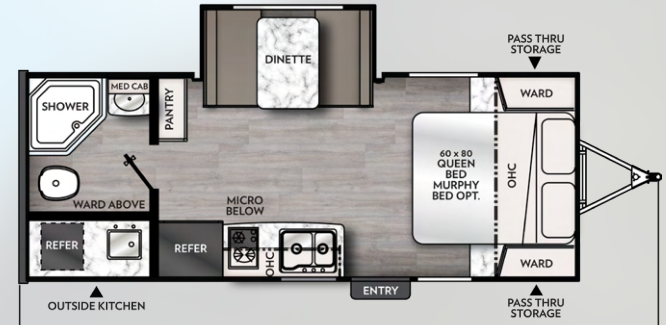
187 RB



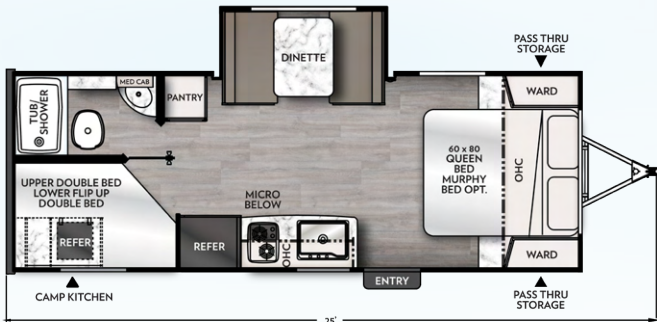
191 RBS



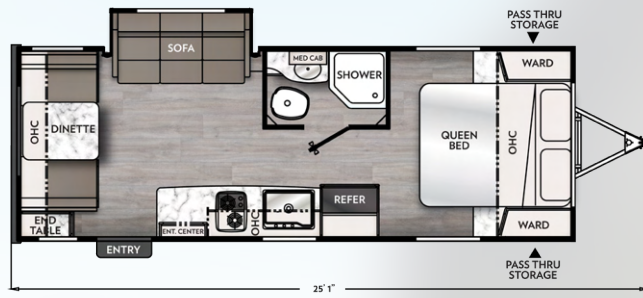
194 BHS



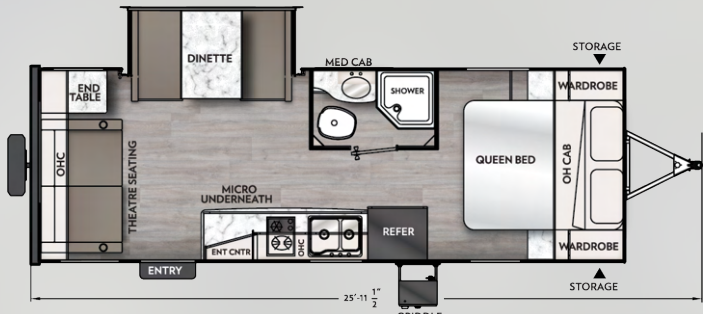
203 RBK



208 BHS



213 RDS



221 RLS



APEX NANO	185 BH	186 BH	187 RB	191 RBS	194 BHS	203 RBK	208 BHS	213 RDS	221 RLS
Hitch Weight	384	432	390	426	454	470	504	494	503
Carrying Capacity	1,234	1,074	1,342	1,114	910	2,084	1,712	1,806	1,806
UVW	3,202	3,597	3,246	3,552	3,784	3,916	4,198	4,115	4,194
GVWR	4,700	4,700	4,700	4,700	4,800	6,000	6,000	6,000	6,000
Ext. Length (Incl. Bumper to Hitch)	20' 7"	22' 11.5"	21' 5"	21' 11"	22' 8"	23' 5"	24' 11"	25' 2"	25' 2"
Ext. Height (Incl. A/C)	9' 10"	9' 9"	9' 10"	9' 10"	9' 10"	9' 11"	9' 11"	9' 11"	9' 11"
Int. Height (Coach)	77"	77"	77"	77"	77"	77"	77"	77"	77"
Awning Length	12'	15'	12'	12'	14'	15'	14'	15'	15'
Fresh Water Capacity (gal.)	52	52	52	52	52	52	52	52	52
Grey Water Capacity (gal.)	27	27	27	27	27	35	35	35	35
Waste Water Capacity (gal.)	27	27	27	27	27	35	35	35	35

Refer to chart descriptions on back cover.

APEX

ULTRALITE

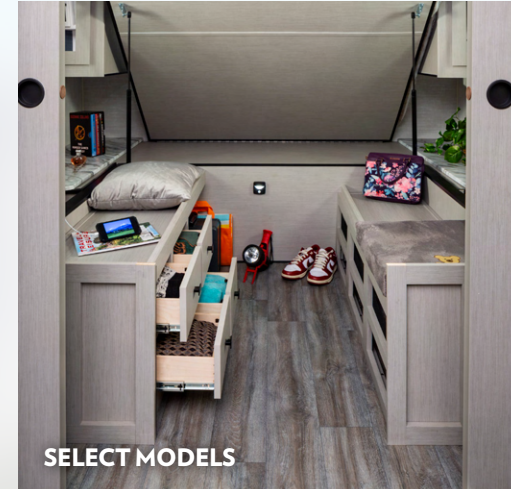
OUR MODERN INTERIORS ARE BEAUTIFULLY PAIRED WITH AN INNOVATIVE USE OF SPACE TO MAKE CAMPING COMFORTABLE AND EASY.



251 RBK



SELECT MODELS



SELECT MODELS



251 RBK

LIGHTWEIGHT ADVENTURE

An Apex Travel Trailer does not just start off as a frame, walls and roof... it begins with an idea! Our belief is that getting the little things right is a BIG THING! The Apex UltraLite is not like other lightweight trailers. It is much smarter because we set new, higher standards for this innovative, truly lightweight trailer.

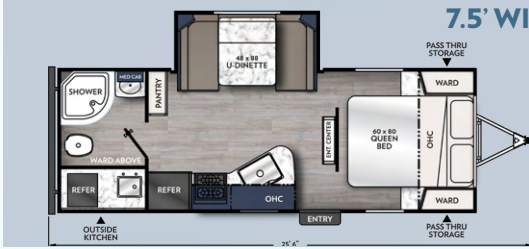
The 251 RBK is perfect for couples who like to kick back and relax with all the amenities of home. It's open concept living at its finest, with comfortable seating located directly across from the TV for a great view, and a booth dinette for those game nights.



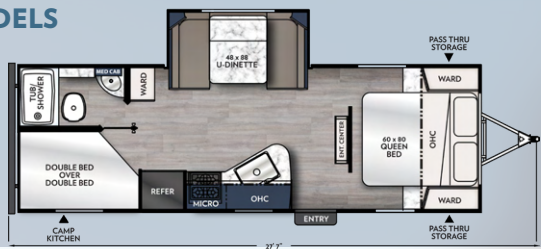
251 RBK

The outside kitchen is the perfect spot to grab some food and keep the fun going.

7.5' WIDE MODELS



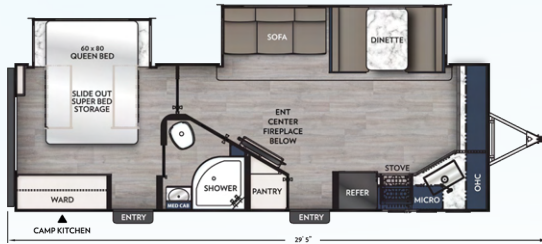
215 RBK



245 BHS



211 RBS



243 FKS



251 RBK



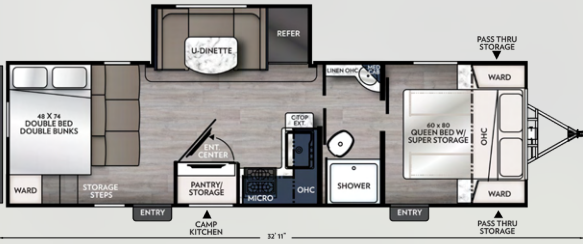
256 BHS



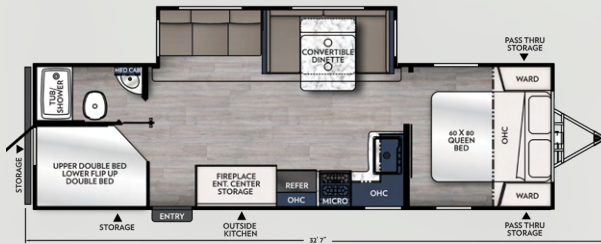
264 RKS



265 RBSS



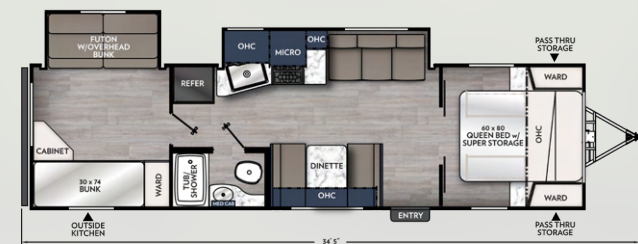
266 BHS



284 BHSS



293 RLDS



300 BHS



Apex 8' WIDES

	215 RBK	245 BHS	211 RBS	243 FKS	251 RBK	256 BHS	264 RKS	265 RBSS	266 BHS	284 BHSS	293 RLDS	300 BHS
Hitch Weight	446	578	587	810	570	694	718	734	934	722	832	672
Carrying Capacity	2,135	1,914	1,938	1,654	2,016	2,128	1,618	1,948	1,520	1,578	1,360	1,625
GVW	4,365	4,586	4,891	5,906	4,984	5,472	5,982	5,652	6,080	6,017	6,440	5,975
GVWR	6,500	6,500	7,000	7,600	7,000	7,600	7,600	7,600	7,600	7,600	7,800	7,600
Ext. Length (Incl. Bumper to Hitch)	25' 6"	27' 7"	26' 2"	29' 5"	29'	30' 1"	31' 10"	30' 5"	32' 11"	32' 7"	34'	34' 5"
Ext. Height (Incl. A/C)	10' 2"	10' 2"	10' 5"	10' 7"	10' 1"	10' 5"	10' 4"	10' 6"	10' 5"	10' 7"	10' 7"	10' 1"
Int. Height (Coach)	78"	78"	78"	78"	78"	78"	78"	78"	78"	78"	78"	78"
Awning Length	13'	18'	15'	20'	16'	16'	18'	18'	20'	18'	18'	18'
Fresh Water Capacity (gal.)	52	52	50	50	50	50	50	50	50	50	50	50
Grey Water Capacity (gal.)	35	35	35	70	35	70	70	70	35	70	70	35
Waste Water Capacity (gal.)	35	35	35	35	35	35	35	35	35	35	35	35

APEX STANDARDS AND OPTIONS

	UL	NANO		UL	NANO		UL	NANO
VALUE PACKAGE (MANDATORY)			INTERIOR AND DÉCOR					
◀ Vacuum-bonded Laminated Azdel Fiberglass Side Walls	x	x	◀ Casino Bisque Cabinetry	x	x	◀ Foot Flush Toilet	x	x
◀ Vacuum-bonded Laminated Azdel Fiberglass Rear Wall	x	x	◀ Shaker Cabinet Door Frames	x	x	◀ Tub Surround	x	x
◀ Vacuum-bonded Laminated Crowned Roof	x	x	◀ Stile and Rail Cabinet Front Construction	x	x	◀ Glass Shower Door	SM	SM
◀ Laminated Aluminum Framed Floor	x	x	◀ One-Piece Seamless Edge Countertops	x	x	◀ Hand-crafted Wood Medicine Cabinet	x	x
◀ Fiberglass Front Cap w/LED Lighting and Window	x	x	◀ Residential Style Flooring	x	x	EXTERIOR/ CONSTRUCTION		
◀ Alumina-cage Construction	x	x	◀ Overhead Bedroom Cabinets w/Side Wardrobes	x	x	◀ Alumina-Cage Construction	x	x
◀ Two-Tone White and Grey Fiberglass Exterior Sidewalls	x	x	◀ Hard Valances w/Night Shades Throughout	x	x	◀ Vacuum-bonded, Aluminum Trussed Roof w/Dicor Crossflex Roof Membrane [R-11 - 7½' wide, R-14 - 8' wide]	x	x
◀ Front Stone Guard	x	x	◀ Pedestal Dinette Table [Fold Up Table on 211RBS]	x	x	◀ Vacuum-bonded Laminated Azdel Fiberglass Sidewalls [R-11]	x	x
◀ Enclosed Underbelly w/Forced Air Heat	x	SM	◀ Large Oversized Booth or U-shaped Dinette w/Sliding Door Storage Access	x		◀ Vacuum-bonded Azdel Fiberglass Rear Wall	x	x
◀ Aluminum Wheels	x	x	◀ Residential Sofa	x	SM	◀ Laminated Aluminum Framed Floor [R-11]	x	x
◀ Spare Tire	x	x	◀ LP Leak Alarm	x	x	◀ Corrosion Resistant Powder Coated Frame	x	x
◀ Slide Topper Prep	x		◀ Fire Extinguisher	x	x	◀ I-beam Chassis Construction	x	x
◀ Back-up Camera Mount	x	x	◀ Smoke Alarm	x	x	◀ Heated and Enclosed Underbelly w/Forced Air	x	SM
◀ Power Tongue Jack	x		◀ Carbon Monoxide Detector	x	x	◀ Gutter Rail	x	x
◀ Stabilizer Jacks [4]	x	x	ELECTRICAL / HEATING/AC			◀ Dual 20 Lb. LP Tanks w/Cover	x	x
◀ LP Port	x	x	◀ Furnace - Forced Air/Ducts Per Floorplan	x	x	◀ Dual Battery Tray	x	x
◀ 200 Watt Solar Panel w/ 30 AMP Control Charger	x	x	◀ 13.5 BTU A/C [Ducted on 8' wide]	x	x	◀ Solid Step	x	x
◀ 13.5 BTU A/C [Ducted on 8' wide]	x	x	◀ 55 Amp Power Center with Auto-detect, Lithium-compatible	x	x	◀ Tinted Safety Glass Radius Windows	x	x
◀ Ducted/Direct Vent Furnace [Floor Plan Specific]	x	x	◀ Outside Receptacle GFI	x	x	◀ Radius Entrance Door w/Window and Friction Hinge	x	x
◀ DSI Gas/Electric Water Heater	x	x	◀ 200 Watt Solar Panel w/ 30 AMP Control Charger	x	x	◀ Dead Bolt Lock	x	x
◀ Hot/Cold Outside Shower	x	x	◀ Wireless Bluetooth Speaker	x	x	◀ Radius Slam Latch Baggage Doors	x	
◀ Black Tank Flush Kit	x	x	◀ Detachable Marine Style Power Cord	x	x	◀ Break Away Switch	x	x
◀ Power Awning w/Lighting	x	x	◀ USB Chargers	x	x	◀ SuperLube Axles	x	x
◀ Swing Away Assist Handle	x	x	GALLEY			◀ Radial Tires	x	x
◀ Friction Hinge Entrance Door	x	x	◀ 8 Cu. Ft. 12V Refrigerator	x	x	◀ Frame Receiver Prep	SM	SM
◀ Solid Step	x	x	◀ Residential Style Oven	x		◀ Battery Disconnect Switch	x	x
◀ Slam Latch Baggage Door Catches	x		◀ Flush-mount 2-Burner Stovetop		x	OPTIONS		
◀ LED Motion Sensor Light in Exterior Storage Area	x		◀ Flush-mount 3-Burner Stovetop	x		◀ Frameless Dark Tint Windows	x	
◀ Hard Valances w/Night Shades Throughout	x	x	◀ Power LED Lighted Range Hood	x		◀ Stargazer		x
◀ LED Interior Lighting Throughout	x	x	◀ Microwave	x	x	◀ 15K BTU A/C Upgrade	x	x
◀ Microwave	x	x	◀ Stainless Steel Single Bowl Sink w/Flush-mount Cover	x	x	◀ 50 Amp Service w/Second [Forced] 13.5K BTU A/C	x	
◀ Lighted, Flush-mount, 3-Burner High Output Range w/Oven	x		◀ One-Piece Seamless Edge Countertops	x	x	◀ 12v Heat Pads		x
◀ 8 Cu. Ft. 12V Refrigerator	x	x	◀ Matte Black Hardware	x	x	◀ Theater Seating	SM	
◀ Stainless Steel Single Bowl Sink w/Flush-mount Cover	x	x	BATH AND WATER			◀ Goodyear® All-Terrain Tires		x
◀ Access Doors Under Dinette	SM	SM	◀ 6 Gal. Gas/Electric DSI Hot Water Heater	x	x	◀ Murphy Bed		SM
◀ Interior Convenience Center	x	x	◀ Power Bath Vent	x	x	SM = SELECT MODELS		
◀ Digital TV Antenna w/Cable Hook-ups and WiFi Capability	x	x	◀ Water Heater Bypass Valve	x	x			
◀ USB Charging Station	x	x	◀ On-Demand Water Pump	x	x			
◀ LED TV	x		◀ Below Floor Low Point Drains	x	x			
◀ Hide-A-Bed Sofa [Deep slides only]	x							
◀ Tub Surround	x	x						
◀ Skylight in Bath	x	x						
◀ Mattress with Cover	x	x						

APEX CONSTRUCTION

Construction Features

- 3M Breathable graphics
- Tinted, safety glass windows
- Welded aluminum structure, vacuum-bonded sidewalls and rear wall, laminated floor
- Aluminum reinforced vacuum-bonded roof
- Dicor Crossflex roofing membrane
- Azdel composite exterior/interior sidewall and rear wall panels
- Aerodynamic front profile with fiberglass front cap and integrated window
- [2] 20 lb. LP tanks
- Insulated slam latch doors with magnetic hold-ups [N/A Nanos]
- Smooth exterior fiberglass skin
- Aluminum framed openings
- Fully enclosed, heated underbelly [Double axle models]
- Fully welded tubular aluminum floor structure
- Slide system
- Residential Style linoleum flooring
- Powder E-coated, welded I-beam frame with full-depth crossmembers
- SuperLube axles
- Radial tires

Apex features the combination of environmentally friendly Azdel wall boards inside, and out. Using Alomicage Construction maximizes strength while minimizing weight. These Ultralite Travel Trailers are designed for towing by today's half-ton trucks, and SUVs. From 18' to 34'. All units are available under 6,800 lbs.



Fiberglass Front Cap

- ¾ Front fiberglass cap for superior strength
- Automotive glass front window with superior UV protection
- Front stone guard
- Integrated LED accent lights
- Vacuum Bonded Sidewalls and Roof
- Stronger construction
- Lighter weight



Apex is proud to be one of three products to receive the Emerald Level Certification, the highest rated level possible.

As a Certified Green RV, APEX utilizes effective production techniques in combination with healthy materials, plus efficient usage of energy and water to produce a high quality RV with less environmental impact.

Check us out at:

coachmenrv.com/travel-trailers/apex

LIGHTWEIGHT DURABILITY



Double axle floor plans only.



ALOMICAGE™ CONSTRUCTION

Lower Center of Gravity for Better Towability



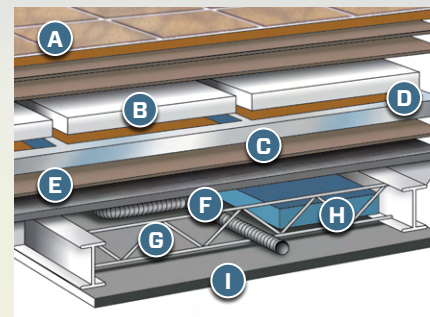
Welded Aluminum Framing

Durable, lightweight aluminum cage – individually framed cut-outs to make for stronger sidewalls and reduce water leaks.



Aluminum Reinforced Vacuum-bonded Roof

The aluminum framed, laminated roof is lighter than the competition, rigid and fully walkable.



Six Layer Laminated Floor

- A Residential durable insulated floor covering
- B Double layer Luan plywood top decking
- C Welded aluminum frame
- D Block foam structural insulation
- E Luan plywood bottom decking
- F Darco waterproof floor wrap
- G Cross member support
- H Holding tanks
- I Heated and enclosed underbelly [Double axle models]

EXPERIENCE YOUR OWN ULTRALITE ADVENTURE

Versatile Apex Travel Trailers provide a perfect home base, wherever the road leads.



THE ENTIRE APEX LINEUP IS PERFECT FOR SMALLER TOW VEHICLES.



423 N. Main Street · P.O. Box 30 · Middlebury, IN 46540

To learn more about Coachmen RV and our products and see how Coachmen is making the easy life easier, visit <https://coachmenrv.com/travel-trailers/apex-ultra-lite>.



YOUR APEX DEALER

Coachmen Interactive Mobile Manuals

Download your Coachmen mobile app or visit our dynamic online manual to enhance your ownership experience. These interactive options provide incredible ease and insight into use, maintenance and enjoyment of your Coachmen product. Ranging from "How-To" videos, pictures and illustrations of various components, systems and features to fully searchable content and downloadable PDFs for individual component owner's manuals, answers are always just a click away.

Find us on Facebook



**24/7 EMERGENCY
ROADSIDE ASSISTANCE
WITH VEHICLE PURCHASE***

<p>TOWING JUMP-STARTS TIRE CHANGES FLUID DELIVERY LOCKOUT SERVICE</p>	<p>WINCH-OUT MOBILE MECHANIC TECHNICAL SUPPORT DEALER LOCATOR SERVICES</p>
---	--

***VALID FOR 1 YEAR FROM DATE OF PURCHASE**

GVWR (Gross Vehicle Weight Rating) - is the maximum permissible weight of the unit when fully loaded. It includes all weights, inclusive of all fluids, cargo, optional equipment and accessories. For safety and product performance do NOT exceed the GVWR.

GAWR (Gross Axle Weight Rating) - is the maximum permissible weight, including cargo, fluids, optional equipment and accessories that can be safely supported by a combination of all axles.

UVW (Unloaded Vehicle Weight)** - is the typical weight of the unit as manufactured at the factory. It includes all weight at the unit's axle(s) and tongue or pin and LP Gas. The UVW does not include cargo, fresh potable water, additional optional equipment or dealer installed accessories. *Estimated average based on standard build optional equipment.

CCC (Cargo Carrying Capacity)** - is the amount of weight available for fresh potable water, cargo, additional optional equipment and accessories. CCC is equal to GVWR minus UVW. Available CCC should accommodate fresh potable water (8.3 lbs per gallon). Before filling the fresh water tank, empty the black and grey tanks to provide for more cargo capacity. **Estimated average based on standard build optional equipment.

Each Forest River RV is weighed at the manufacturing facility prior to shipping. A label identifying the unloaded vehicle weight of the actual unit and the cargo carrying capacity is applied to every Forest River RV prior to leaving our facilities. The load capacity of your unit is designated by weight, not by volume, so you cannot necessarily use all available space when loading your unit. All information contained in this brochure is believed to be accurate at the time of publication. However, during the model year, it may be necessary to make revisions and Forest River, Inc., reserves the right to make all such changes without notice, including prices, colors, materials, equipment and specifications as well as the addition of new models and the discontinuance of models shown in this brochure. Therefore, please consult with your Forest River dealer and confirm the existence of any materials, design or specifications that are material to your purchase decision.
©2021 Apex by Coachmen RV, a Division of Forest River, Inc., a Berkshire Hathaway company. All rights reserved. 12/23 CHM 2258

COA
COACHMEN OWNERS ASSOCIATION

FREE MEMBERSHIP
www.coachmenowners.com

CUSTOMER SATISFACTION

FOREST RIVER
encourages you to
BUY LOCAL

PREFERENTIAL SERVICE PRODUCT INFORMATION

www.ForestRiverBuyLocal.com



Learn More
Scan this barcode using a QR Reader on your smart phone to learn more about Forest River.



A Berkshire Hathaway company.