



THE 2024 INFLATABLE POP-UPS

MODELS: _____

- OP2
- OP4
- OP LITE
- OP4 LE (2023)



THE 2024 OP2



DRY WEIGHT: 3244 LBS | GVWR: 4400

BEDS: 1 QUEEN BED

WATER: 33 GALLONS - 1 SEAFLO PUMP - ECCOTEMP WATER HEATER

BATHROOM/SHOWER: LARGE PRIVACY ROOM - HOT WATER SHOWER

OPTIONS: _____

HEATER

CRUISEMASTER DO35 HITCH

SOLAR & LITHIUM BATTERIES

AIR ANNEX OR AIR CANOPY

BIKE RACK CARRIERS

CINEMA SYSTEM

12V FRIDGE

REMOTE TRAILER MOVER

AIR WINDBREAK

OPUS
OFF-ROAD



"THE AWARD-WINNING AIR SYSTEM EXPANDS TO ABOUT EIGHT FEET TALL AND 121 SQUARE FEET IN TOTAL"





OFF-ROAD RUGGED

The OP2 has a single bed lid that opens to a large queen bed and spacious lounge. The exterior was designed with an extended front tool box, stackable storage and a built-in hot water shower.

The OP2 features an all-terrain chassis with Off-Road 15" tires and independent coil suspension, built to follow any 4WD vehicle through the roughest terrain. The 2024 OP2 comes with a 33 gallon freshwater supply and 3-4 days of built in battery life (with solar power and lithium battery options). The large tent extension works as a space for hot water showers and provides privacy so you can get off grid in comfort.

OUTDOOR KITCHEN

The OP2 stainless steel kitchen slides out to a fully-functioning offgrid outdoor cooking experience so you never miss a moment of the action.

The upgraded front toolbox provides stackable storage with tons of pantry space and a 63 QT 12v fridge. The 2023 models also have LED lighting running along the top of the stove and spicerack for added visibility at night.

OP2 KITCHEN FEATURES:

- 4-burner stove
- Wind guards
- Stainless steel chopping board
- Sink with running water
- LED outdoor cooking light
- 12v electric fridge.
- Hot water connects

AIR TENT TECHNOLOGY

The OP2 features our innovative, multi-award winning AIR OPUS tent, which allows you to effortlessly set up your tent at the touch of a button. Our patented AIR Inflation technology incorporates a built-in compressor which inflates the tent in just 2 minutes. The AIR tent frame is built to withstand rough weather conditions while providing you with a bright, spacious, comfortable living space.



COVER OPTIONS

The 2024 models include the option for an AIR Canopy or AIR Annex. Both options connect directly to the AIR tent and can be packed-down with your camper during travel and storage.

AIR ANNEX

The new lightweight AIR Annex includes two extra bedroom pods and an extended living area. This option takes an additional 2 - 3 minutes to inflate with your on-board air compressor. With a fully enclosed living space and a large protective floor, the AIR Annex adds space to sleep an additional 4 adults.

AIR CANOPY

The AIR Canopy is a lighter option to the full AIR Annex. Extending the full width of your camper, the AIR Canopy takes an additional 90 seconds to inflate and provides full kitchen coverage for protection from rain and sun.

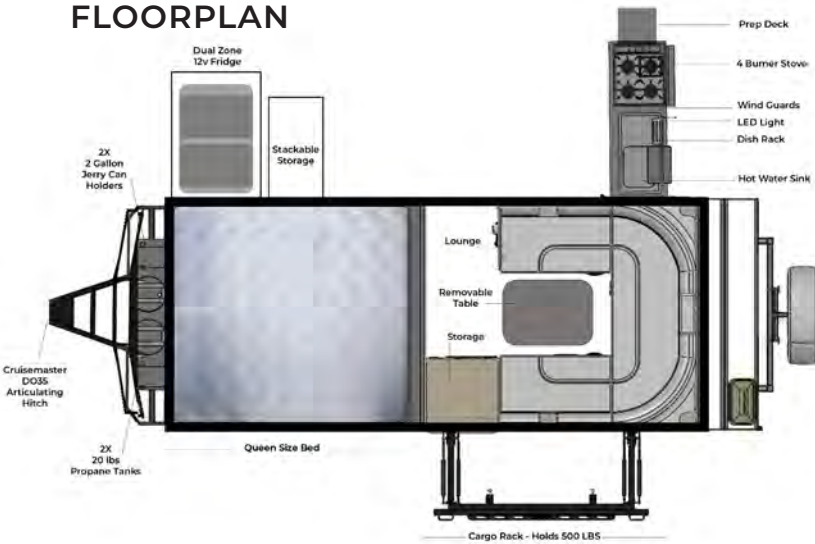




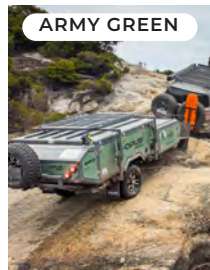
SPECIFICATIONS

DIMENSIONS (OPEN)	21'4" X 6'10"
DIMENSIONS (CLOSED)	18'4" (W. SPARE) X 6'5"
GROUND CLEARANCE	12.4"
RIDE HEIGHT	5'7" (WITH CARGO RACK)
BED SIZE	6'2" X 5'5" X 4"
ELECTRICS	12V & 120V
DRY WEIGHT	3,244 LBS
TONGUE WEIGHT	355 LBS
GVWR	4400 LBS
LOAD CAPACITY	1100 LBS
CARGO RACK CAPACITY	500 LBS
TOWING	7-PIN BLADE

FLOORPLAN



COLORS



FEATURES

OPTIONAL

- Lithium Battery Upgrade
- Truma VarioHeat Furnace 16,000BTU*
- Portable Cassette Toilet
- LED Lighting w/ Dimmer Switches
- OPUS AIR Inflatable Annex
- OPUS AIR Inflatable Canopy
- Fold Over Cargo Rack*
- Rhino Roof Rack Bars*
- Kayak Carrier (only with Rhino Bars)
- Single Bike Carrier
- Water & Waste Carriers 6gl (each)
- Enduro Remote Control Trailer Mover
- Nemesis Wheel Lock
- Zamp 140Watt Solar System
- Upgraded Fridge ARB 63QT
- ARK Dual Wheel Tongue Jack

STANDARD

- AIR OPUS Inflatable AIR Tent
- Interior Ceiling Lighting
- Front Stone Gaurd
- Interior Floor Lighting w/ Dimmer
- Slide out Kitchen with Stove & Sink
- 33gl On-board Water System
- 12v Refrigerator
- Stereo System w/ 2 x speakers
- Propane & Water Can Holders
- Solar Panel Port
- 265/75R15 Off Road Mud Tires
- Electric Drum Brakes & E-brake
- Leatherette Club Lounge
- External LED Lighting
- Fold-down table
- Exterior Shower (Cold Water)
- Shore Power Extension Lead
- Off-Road Articulating Hitch



THE 2024 OPUS



DRY WEIGHT: 3100 LBS | GVWR: 4200 LBS

Beds: 2 Double Beds w/ King Bed Extension (Sleeps 6 with Lounge Bed)

Water: 40 Gallons - 2x 20 Gallon Tanks - 2 Seaflo Pumps - Eccotemp Water Heater

Bathroom/Shower: Rack-Mounted Ironman 4x4 Shower Tent & Hot Water Shower

OPTIONS:

Heater and/or Air Conditioner

AIR Annex or AIR Canopy

Cruisemaster DO35 Hitch

Cinema System

Solar & Lithium Batteries

Storage Cover

OPUS
OFF-ROAD

“THE OPUS IS BUILT WAY BETTER THAN ANY OTHER TENT TRAILER OUT THERE. BUILT TO LAST. IT’S EXTREMELY WELL THOUGHT OUT AND ENGINEERED. AND IF YOUR VEHICLE CAN GET THERE, SO CAN THE OPUS. “
- ADAM C.



WHAT'S NEW ON THE 2024 MODELS?

ICECO 12V FRIDGE

53 QT cooler style fridge/freezer slides out.



POWER INVERTER

Use 12v and 110v power on and off grid.



ADDED KITCHEN LIGHTS

LED Lights run above the stove & dish rack.



BLUETOOTH SPEAKER

Removable speaker connects 2 speakers.



ADJUSTABLE TABLE

Remove table for additional sleeping space.



SMART CONTROL PANEL

Reads lithium & AGM batteries.



OFF-ROAD & OFF-GRID READY

Our chassis is designed to tackle any terrain and attaches to a Cruisemaster DO35 articulating hitch - the best off-road hitch on the market providing 360° mobility while towing. We've also beefed up the suspension, installed heavy-duty coil springs, along with a dual shock axle, and angled the rear of the trailer to provide an impressive rear departure angle, making the Opus your perfect overlanding companion. With 40 gallons of water on-board, lithium batteries, solar charging, 20lb propane tank holder, and DC-DC charging options, you can get off the grid while still living luxuriously.

OUTDOOR COOKING EXPERIENCE

The OP4 stainless steel kitchen slides out to a fully-functioning off-grid outdoor cooking experience so you never miss a moment of the action. Includes a 4-burner stove with wind guards, stainless steel chopping board, sink with running water, LED outdoor cooking light and a 12v electric fridge.

GEAR & TOYS

With two reinforced lids and a universal racking system, the OP4 is the perfect load-carrying platform and can handle up to 500 lb on the roof rack. This makes it easy to bring all the toys - carry boats, bikes, kayaks, gear, and more. Even with these features, the GVWR remains incredibly low at 4200 lbs.

AIR BEAM TECHNOLOGY

BUILT TO WITHSTAND ROUGH WEATHER WHILE PROVIDING A BRIGHT & SPACIOUS LIVING SPACE

✓ BUILT-IN AIR PUMP INFLATES TENT IN 2 MINUTES

✓ DURABLE DESIGN WITH 9 INDIVIDUAL AIR BEAM

The OP4 is designed with our patented AIR Inflation technology with an onboard 12v air compressor allowing you to effortlessly inflate your tent in under two minutes. With 9 individually valved air beams, the tent is designed to stand firm through rain and wind. With far more headroom than any other off-road camper on the market, the OP4 has 8-foot high ceilings, multiple sunroofs, and dozens of windows.

WEATHER

The Opus can handle any kind of weather! The tent is completely waterproof and can stand winds up to 55MPH without any compromise to its stable structure. Although the canvas is still a tent, it's made from very high-quality poly-cotton so it is well insulated. With our tropical rain fly, you'll stay protected from the elements while still being able to open your sunroofs for ventilation.

COVER OPTIONS

If you'd like to get out of the sun or cook during rain, we have two awning options to keep you covered: the AIR Canopy or AIR Annex. Both connect directly to the AIR tent & pack-down with your camper for travel & storage.

AIR ANNEX

The AIR Annex is fully enclosed with a large protective floor & two additional bedroom pods. It inflates 2 - 3 minutes with the air compressor and adds 4 additional sleeping spaces.



AIR CANOPY

The AIR Canopy is a lighter option to the full AIR Annex. Extending the full width of your camper, the Canopy takes 90 seconds to inflate and provides full kitchen coverage reaching 10 feet high.

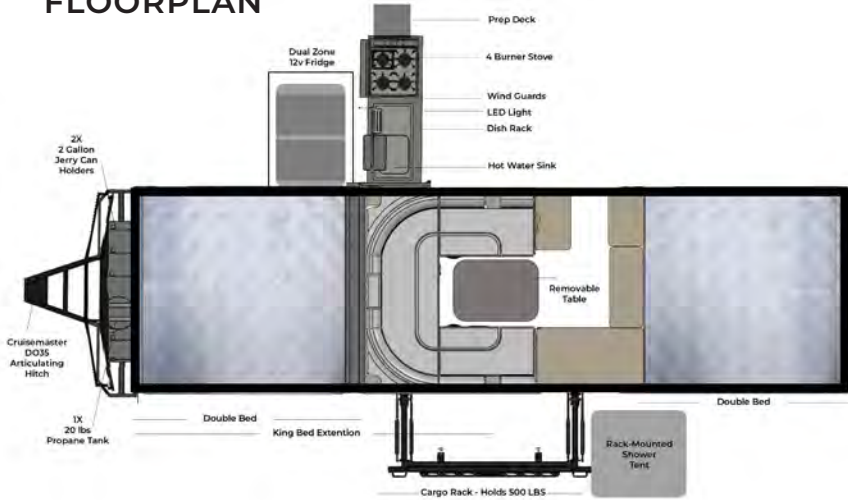


SPECIFICATIONS

DIMENSIONS (OPEN)	L20' x W7'2"
DIMENSIONS (CLOSED)	17' (INC. SPARE WHEEL) x 7'2"
GROUND CLEARANCE	Minimum Ground Clearance: 12.4" Maximum Ground Clearance: 22"
RIDE HEIGHT	5'4" (WITH CARGO RACK)
BED SIZE	2 Double Beds: 5'7 x 4'2 x 4'
LOAD CAPACITY	1100 LBS
DRY WEIGHT	3100 LBS
TONGUE WEIGHT	400 LBS
GVWR	4200 LBS

"IN JUST 90 SECONDS, THE AIR OPUS TRANSFORMS FROM A COMPACT BOX TO A FULL-SIZE CAMPER THAT'S ROOMY ENOUGH TO SLEEP GROUPS OF UP TO SIX"
- MEN'S HEALTH MAGAZINE

FLOORPLAN



COLORS



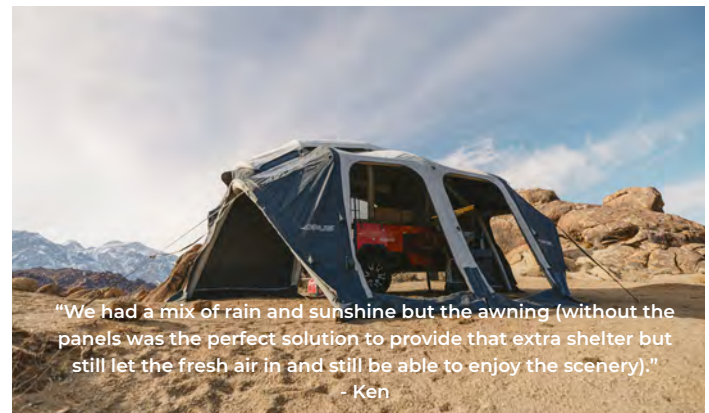
FEATURES

STANDARD

- AIR OPUS Inflatable Tent
- Tropical Roof & LED Lighting
- Galvanized steel chassis & Rock Guard
- 2x 265/75/RR15 Mud Tires + 1x Spare
- Electric brakes, 7 pin-plug & E-Brake
- Dual Axel Trailing Arm Suspension
- Dual coil shock absorbers
- Leatherette Club Lounge
- Removable Table
- 2 x 100ah AGM Batteries
- 12v, 120v and USB Outlets
- Exterior Rinse Shower
- Articulating Hitch
- Slide-out Stainless Steel Kitchen
- 4-Burner Stove
- Sink with On-Demand Hot Water
- Slide-out 12v Fridge/Freezer
- Stereo System with AUX, USB & Bluetooth
- 20lb Propane Tank Holder
- 2 x 6gl Jerri Can Holders

OPTIONAL

- OPUS AIR Annex
- OPUS AIR Canopy
- Enduro Remote Trailer Mover
- Fold Over Cargo Rack
- Rhino Roof Rack Bars
- Cruisemaster DO35 Articulating Hitch
- DC - DC Charger (Trailer Side)
- 2 Lithium Batteries & Li Charger
- Zamp 140Watt Solar Panel System
- 63 QT 12V Fridge
- ARK 750 Tongue Jack
- Nemesis Wheel Lock
- Solar Panel Port
- Portable Cassette Toilet
- Cinema System (Projector & Screen)
- Fitted Storage Cover
- Single Bike Carriers (up to 3)
- Kayak Carrier (only with Rhino Bars)
- Rack Mounted Hot Water Shower & Tent
- Dometic AC & Heat Pump 10,000BTU
- Propane Furnace 16,000 BTU
- Upgraded LED Lighting w/ Dimmer



OPUS CAMPER PROUDLY MANUFACTURES IN PITTSBURG, CA.

OPUS
OFF-ROAD

WWW.OPUSCAMPER.US | 925.215.7315 | 701 WILLOW PASS RD. STE 8, PITTSBURG, CA 94565

THE 2024 OPUS LITE



DRY WEIGHT: 2380 LBS | GVWR: 3527 LBS

PERFECT TO TOW WITH A SMALL SUV OR JEEP

Beds: 1 Double Bed (Sleeps 2.5 with Lounge Bed)

Water: 20 Gallon Fresh Water Tank

Battery: 1 X 100 AMP AGM Battery with Lithium Upgrade Available

OPTIONS: _____

AIR Annex

Cruisemaster DO35 Hitch

Solar & Lithium Batteries

Saracen Hitch Lock

Enduro Trailer Mover

OPUS
OFF-ROAD

WWW.OPUSCAMPER.US



RUGGED, VERSATILE & ENGINEERED FOR TIGHT LOW PROFILE TOWING
THE OP LITE IS PERFECT FOR A SMALL SUV OR JEEP

OFF-ROAD READY

Featuring the same beefed-up independent suspension system the OPUS OFF-ROAD brand is known for, the OP LITE has been engineered to go anywhere your 4WD vehicle can go. An articulating hitch sits at the end of a galvanized steel chassis to tackle the roughest roads with ease. Underneath there are twin shock absorbers and trailing arm independent suspension for each wheel. The articulating hitch partnered with the suspension system makes the OP LITE an incredibly versatile trailer. The hitch rotates a full 360 degrees so your tow vehicle can be angled in any direction without damage.



BRING YOUR GEAR

A true Overlanding companion, the OP LITE is designed to sustain you off-grid for up to 2 days. For more time off-grid the OP LITE comes fitted with a solar panel port giving you the option to easily add a ZAMP 140 WHT solar panel. With large exterior storage compartments and a full-width rear storage with access points, the OP LITE has plenty of storage space for your off-grid trip.

SLIDE-OUT KITCHEN

The OP LITE features our signature outdoor slide-out stainless steel kitchen to make sure you don't miss a moment of fun whilst you're cooking up a delicious meal after a hard day of adventuring! A full kitchen experience comes in the form of a large external 12 V fridge, stainless steel slide-out 4 burner stove with stainless steel chopping board, wind guards, sink, pantry access & cutlery drawer that are all in arms reach.



AIR INFLATION TECHNOLOGY

Our patented AIR Tent technology provides the capability to achieve 8 foot ceilings and large operable windows for optimal ventilation and uninterrupted views so you never feel cramped or crowded in your tent. The AIR inflation system runs off the 12v electric air compressor installed in your OP LITE and is connected to your control panel so that you can inflate it at the touch of a button.

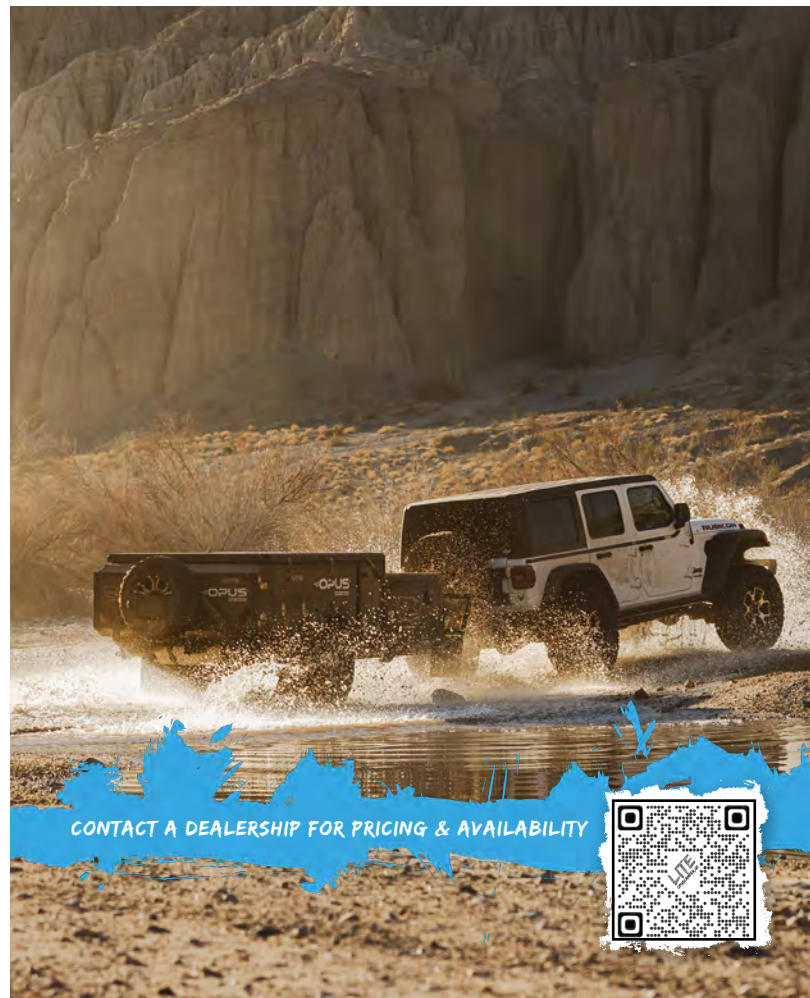
AIR ANNEX OPTION

The OP Lite inflatable AIR Annex provides a fully enclosed extra living area that covers your kitchen area from the elements. It connects directly to your AIR tent & inflates at the touch of a button. Provides dual functionality as all the walls can be zipped open for use as a Sun Awning, it can also be fully enclosed.





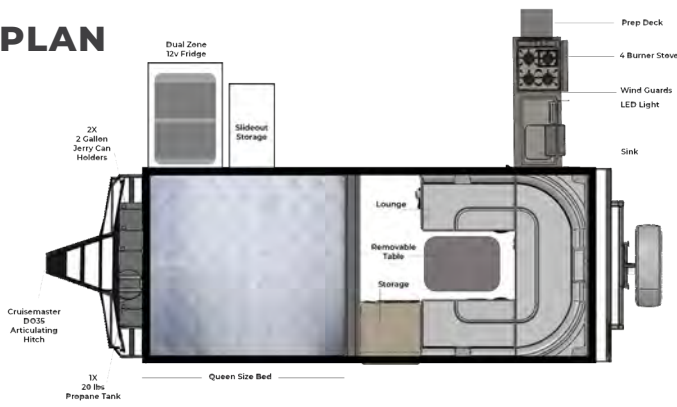
DESIGNED FOR COMPACT LOW PROFILE TOWING
TO TAKE YOU ANYWHERE YOUR 4WD VEHICLE CAN



CONTACT A DEALERSHIP FOR PRICING & AVAILABILITY



FLOORPLAN



OPTIONS

- OPUS AIR INFLATABLE ANNEX
- LITHIUM BATTERY
- NEMESIS WHEEL LOCK
- ENDURO REMOTE TRAILER MOVER
- WATER & WASTE CARRIERS 6GL (EACH)
- ZAMP 140WATT SOLAR SYSTEM

EVERYTHING YOU NEED FOR OFF-GRID ADVENTURES

- AIR OPUS INFLATABLE TENT
- INTERIOR CEILING LIGHTING
- CEILING & FLOOR LIGHTING W/ DIMMER SWITCHES
- LEATHERETTE CLUB LOUNGE
- REMOVABLE TABLE
- STEREO SYSTEM W/ 2X SPEAKERS
- EXTERIOR LED LIGHTING
- 2 X USB PORT
- SPARE WHEEL & CARRIER
- SLIDE-OUT KITCHEN
- 4-BURNER STOVE & SINK
- PROPANE & WATER CAN HOLDERS
- 12V REFRIGERATOR
- SOLAR PANEL PORT
- 20-GALLON ON-BOARD WATER SYSTEM
- ELECTRIC WATER PUMPS
- WATER TANK FILL HOSE
- STONE GUARD
- 1 X 100AH DEEP CYCLE BATTERIES
- 265/75R/15 OFF-ROAD MUD TIRES
- GALVANIZED STEEL TRUSS CHASSIS
- ELECTRIC DRUM BRAKES & E-BRAKE
- OFF-ROAD ARTICULATING HITCH
- ARK DUAL WHEEL TONGUE JACK



INTERIOR & EXTERIOR TOWING DETAILS SPECIFICATIONS

- DRY WEIGHT: 2,380LBS
- GROSS VEHICLE WEIGHT RATING: 3,527LBS
- TONGUE WEIGHT: 209LBS
- EXTERIOR LENGTH: 17'2 FT
- EXTERIOR WIDTH: 5'6 FT
- HEIGHT (CLOSED): 4'5 FT
- HEIGHT (OPEN): 10 FT
- BED DIMENSIONS: RV QUEEN BED (6 FT X 5'3 FT)



LIMITED EDITION OP4

OFF-ROAD CAMPER WITH AIR BEAM INFLATION



WHY LIMITED?

Truma Combi Heater
Renogy Inverter
2x Lithium Batteries
Tons Of Additional Exterior Storage
Upgraded Lounge & Mattresses
Additional Propane Tank On Tongue (2x Tanks Total)
Upgraded Alloy Cargo Rack

DRY WEIGHT: 3100 LBS | **GVWR:** 4200

Beds: 2 Double Beds w/ King Bed Extension (Sleeps 6 w/ Lounge)

Water: 40 Gallons - 2x 20 Gallon Tanks

Bathroom/Shower: Rack-Mounted Tent & Hot Water Shower

OPUS
OFF-ROAD



EVERYTHING YOU NEED...

This OP4 is fitted with a Truma Combi heater, an inverter, lithium batteries, and tons of exterior storage. The interior is fully loaded with upgraded cushioning, mattresses, an adjustable table, and bamboo woodwork.

The exterior holds an additional propane tank on the tongue and an upgraded alloy cargo rack. The OP4 LTD comes equipped with a robust off-road package, including an independent trailing arm suspension, dual shocks, coil springs, an articulating hitch, and front rock guard to tackle anything the wilderness can throw at it.



OUTDOOR COOKING EXPERIENCE...

With added storage in the interior and exterior of the LTD, everything you need is in arm's reach. The kitchen layout is also flipped on the LTD, making it easy to access the fridge while you're using your stove.

The stainless steel kitchen slides out to a fully-functioning off-grid outdoor cooking experience so you never miss a moment of the action. Includes a 4-burner stove with wind guards, stainless steel chopping board, sink with running water, LED outdoor cooking light and a 12v electric fridge.

WHAT ARE YOUR OPTIONS?

There are some features that do not come standard with the LTD build and you will need to specifically request them from your dealership (many are also available for purchase on our website at www.purplelineusa.com). This is your opportunity to determine what features you need based on your lifestyle.

AIR CANOPY



The Canopy covers the entire exterior kitchen, inflates in 90 seconds, connects directly to the AIR tent, & packs down with your camper.

REMOTE TRAILER MOVER



Use a remote to direct your trailer into any position required. Gain absolute control going up or downhill, or hitching and unhitching.

CINEMA SYSTEM



Only available in OP4s, the cinema system has a custom retractable projector screen, and streams via USB, MicroUSB, AV/VGA & HDMI.

AIR WINDBREAK



Inflating in under 30 seconds, the AIR Windbreak comes with 2 large panels & 2 standard panels that zip together to protect your kitchen.

STORAGE COVER



Carefully engineered for the OP4 LTD to protect everything from your hitch to your spare tire, to your cargo rack and gas/water quick connects.

KAYAK CARRIER



Designed for Rhino Rack installation on your cargo rack, the kayak carrier allows you to carry up to one kayak.

BIKE RACK



Designed for the OP4 fold-over cargo rack, the bike rack carriers fit great with the rack-mounted shower with room to spare | Load capacity: 45 lbs

SOLAR PANEL



The OP4 LTD has a solar panel port that fits a ZAMP solar panel. We recommend the Zamp 140 Watt Solar panels to charge your trailer.

OPTIONS:

- AIR Canopy
- Remote Trailer Mover
- Zamp 140Watt Solar Panel System
- Saracen Off-Road Hitch Lock
- Cinema System (Projector & Screen)
- Fitted Storage Cover
- Single Bike Carriers (up to 3)
- Kayak Carrier
- Rack Mounted Hot Water Shower
- AIR Windbreak

RACK MOUNTED SHOWER



This innovative design secures to the cargo rack inside a durable shower box for quick set-up and ultimate privacy when outdoors.

SARACEN - DO35 HITCH LOCK



Get the high-security hitch lock developed in Australia specifically for the CRUISEMASTER® DO35 articulating hitch.

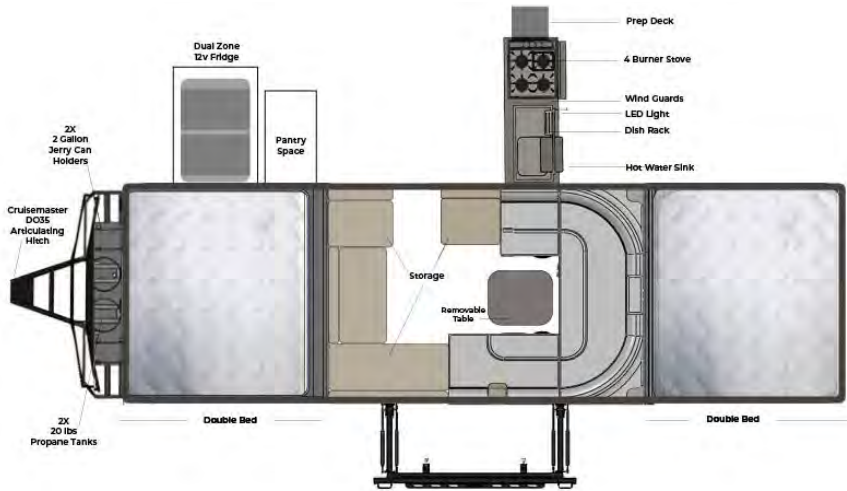
AIR BEAM TECHNOLOGY

The OP4 features our innovative, multi-award winning AIR OPUS tent, which allows you to effortlessly set up your tent at the touch of a button. Our patented AIR Inflation technology incorporates a built-in compressor which inflates the tent in just 2 minutes. The AIR tent frame is built to withstand rough weather conditions while providing you with a bright, spacious, comfortable living space.



FLOORPLAN

LIMITED FEATURE: LAYOUT IS FLIPPED TO CREATE MORE STORAGE & EAST FRIDGE ACCESS



SPECIFICATIONS

DIMENSIONS (OPEN)	L20' x W7'2"
DIMENSIONS (CLOSED)	17' (INC. SPARE WHEEL) x 7'2"
GROUND CLEARANCE	Minimum Ground Clearance: 12.4" Maximum Ground Clearance: 22"
RIDE HEIGHT	5'4" (WITH CARGO RACK)
BED SIZE	2 Double Beds: 5'7 x 4'2 x 4'
LOAD CAPACITY	1100 LBS
DRY WEIGHT	3100 LBS
TONGUE WEIGHT	400 LBS
GVWR	4200 LBS



AVAILABILITY

Visit our website at www.opuscamper.us to find a dealership near you.

Please contact a dealership for all pricing and financing information.



FEATURES

LIMITED FEATURES: Noted Features(*) are not available on standard builds.

LIMITED FEATURES

- Truma Combi Heater
- Renogy Inverter
- 2x Lithium Batteries
- Tons Of Additional Exterior Storage
- Upgraded Lounge Cushioning
- Microfiber Mattresses
- Dark Grey Adjustable Table
- Bamboo Woodwork Inside
- Additional Propane Tank On Tongue (2x Tanks Total)
- Upgraded Alloy Cargo Rack

STANDARD

- AIR OPUS Inflatable Tent & Tropical Roof
- Galvanized steel chassis & Rock Guard
- 2x 265/75/RR15 Mud Tires + 1x Spare
- Electric brakes, 7 pin-plug & E-Brake
- 12v, 120v and USB Outlets
- Exterior Rinse Shower
- Slide-out Stainless Steel Kitchen
- 4-Burner Stove & Sink with Hot Water
- Slide-out 12v Fridge/Freezer
- Stereo System with AUX, USB & Bluetooth
- 2 x 6gl Jerri Can Holders

OPTIONAL

- OPUS AIR Canopy
- Enduro Remote Trailer Mover
- Zamp 140Watt Solar Panel System
- Saracen Off-Road Hitch Lock
- Cinema System (Projector & Screen)
- Fitted Storage Cover
- Single Bike Carriers (up to 3)
- Kayak Carrier (only with Rhino Bars)
- Rack Mounted Hot Water Shower & Tent
- Dometic AC & Heat Pump 10,000BTU
- AIR Windbreak



OPUS CAMPER PROUDLY MANUFACTURES IN PITTSBURG, CA.

WEBSITE: WWW.OPUSCAMPER.US | PHONE: 925.215.7315 | EMAIL: INFO@OPUSCAMPER.US