



2024 Midwest • 2024 Northwest

2024



FOREST RIVER
WILDWOOD
FSX

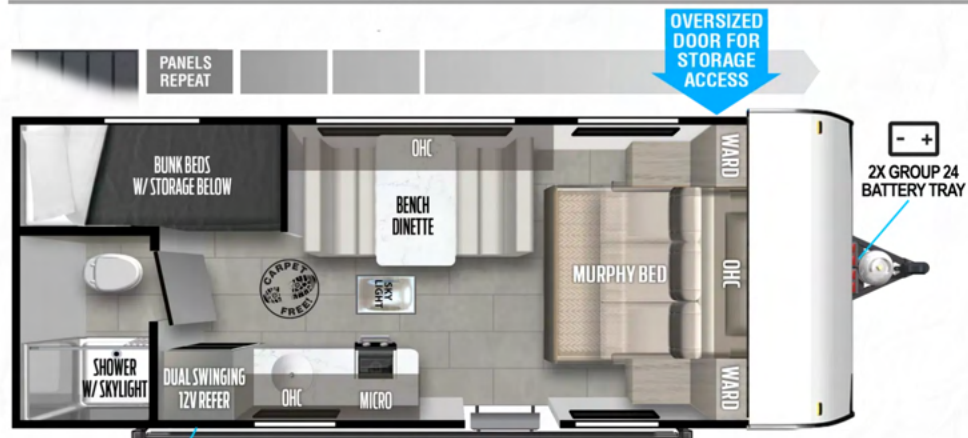
2024

LE TRAVEL TRAILERS

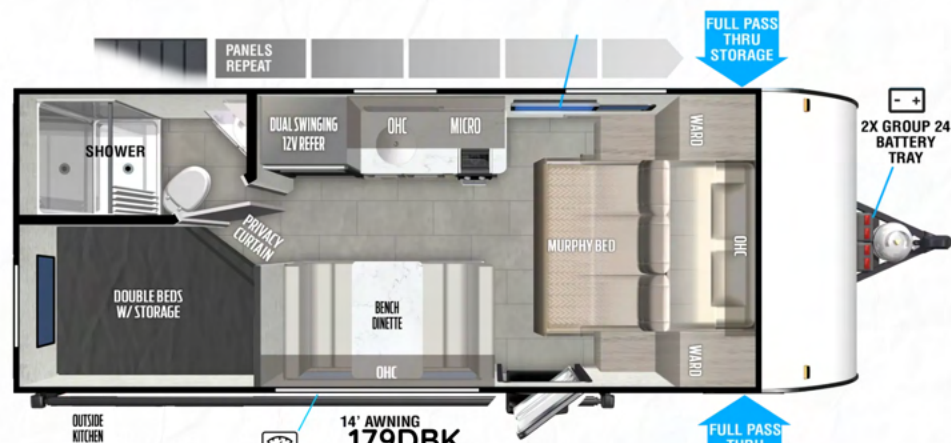
164RBLE
LENGTH: 20' 1"
UVW: 2,819 LBS



174BHLE
LENGTH: 20' 1"
UVW: 2,899 LBS

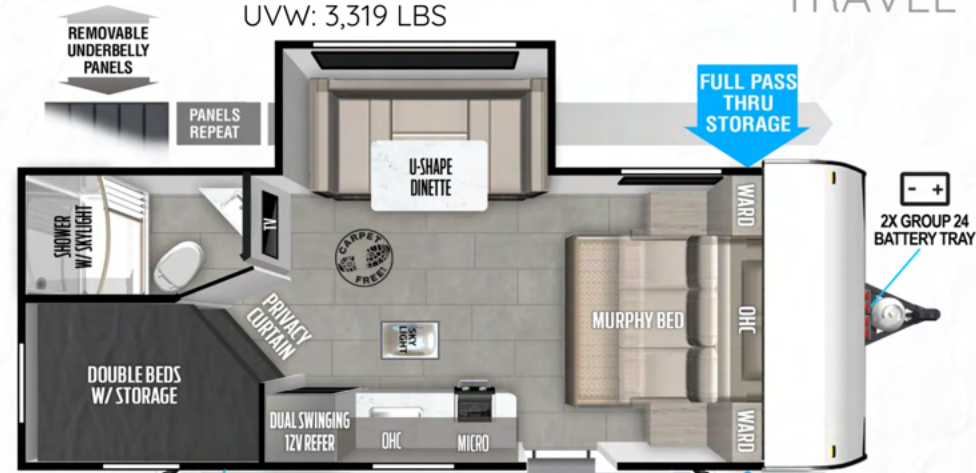


177BH 12' AWNING
LENGTH: 22' 0"
UVW: 3,319 LBS



14' AWNING
179DBK
LENGTH: 22' 6"
UVW: 3,829 LBS

TRAVEL TRAILERS



14' AWNING
178BHSK
LENGTH: 22' 11"
UVW: 4,119 LBS

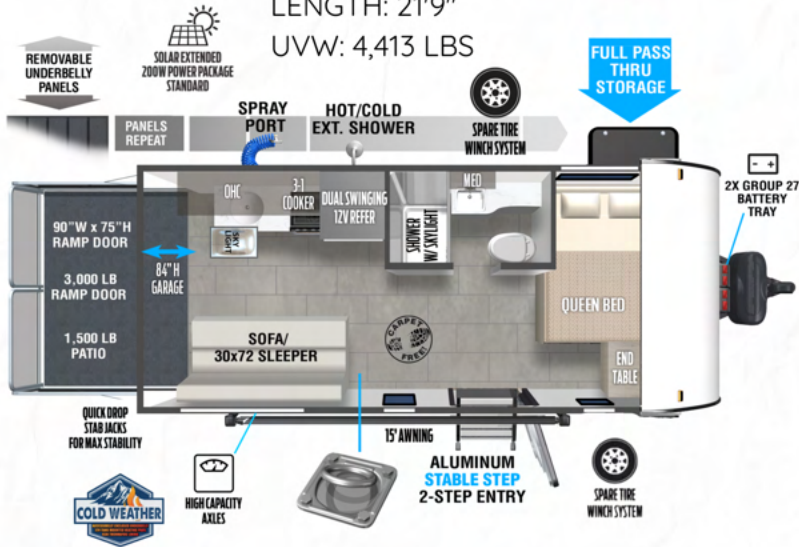


12' AWNING
167RBK
LENGTH: 21' 2"
UVW: 3,651 LBS

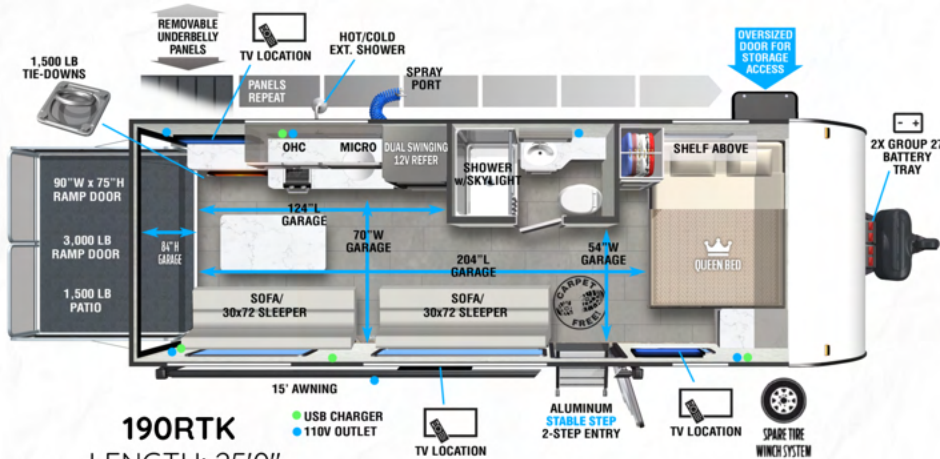
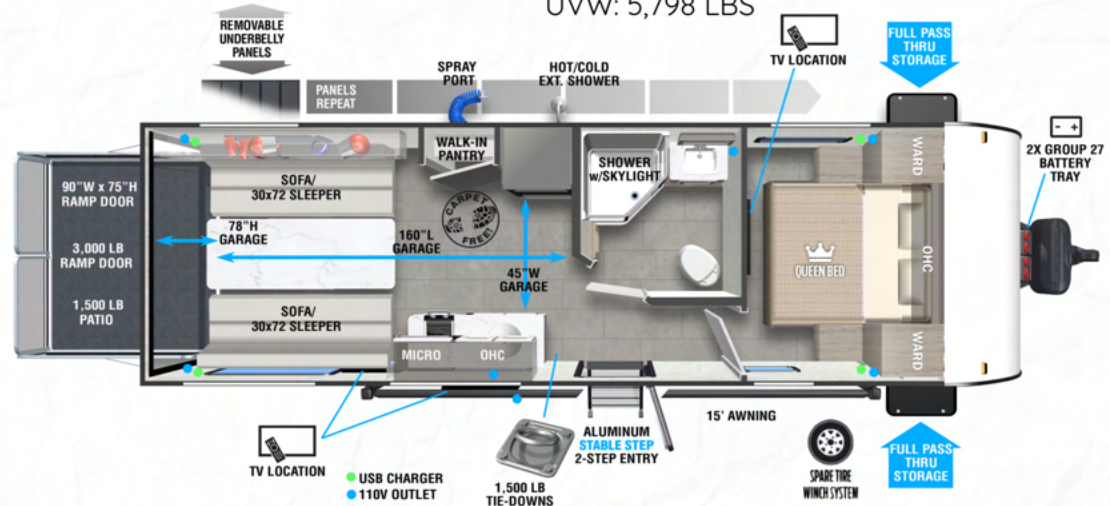


TOY HAULERS + VERSATILE CARGO

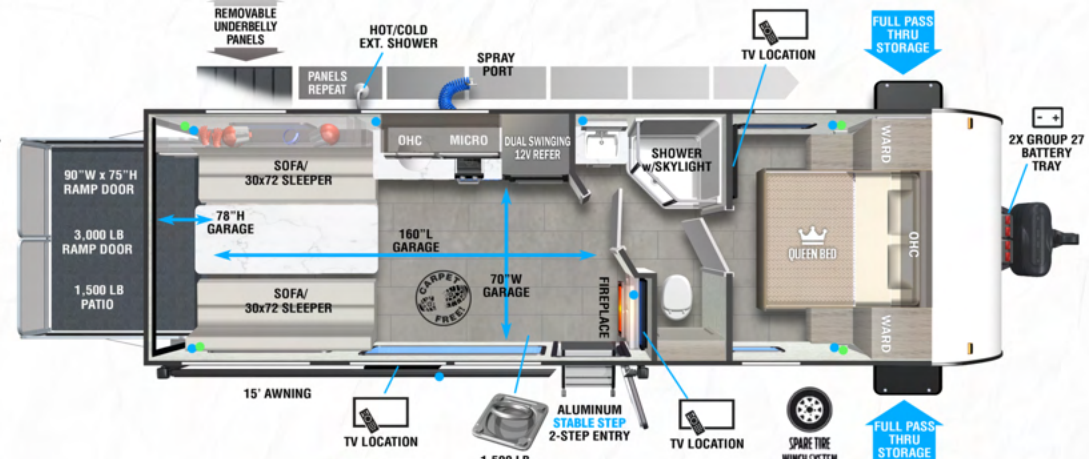
175RTK
LENGTH: 21'9"
UVW: 4,413 LBS



210RTK
LENGTH: 28'8"
UVW: 5,798 LBS



190RTK
LENGTH: 25'0"
UVW: 4,988 LBS



260RTK
LENGTH: 28'8"
UVW: 5,805 LBS



AVAILABLE ON MOST MODELS

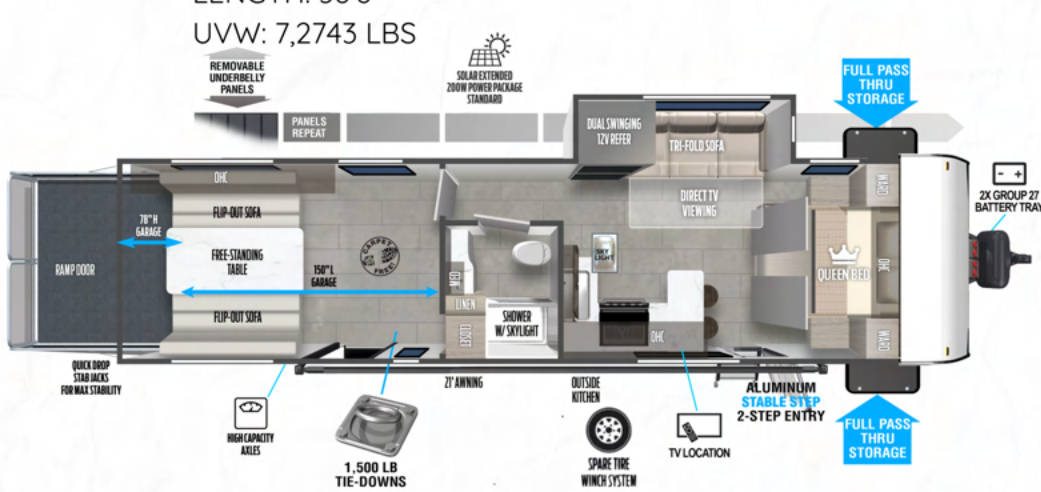


270RTK
LENGTH: 32'3"
UVW: 6,318 LBS

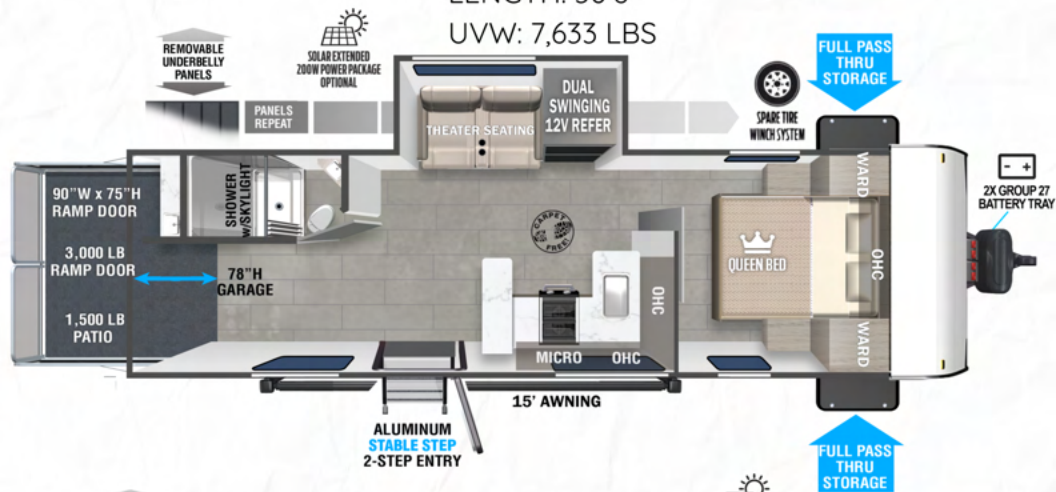


TOY HAULERS + VERSATILE CARGO

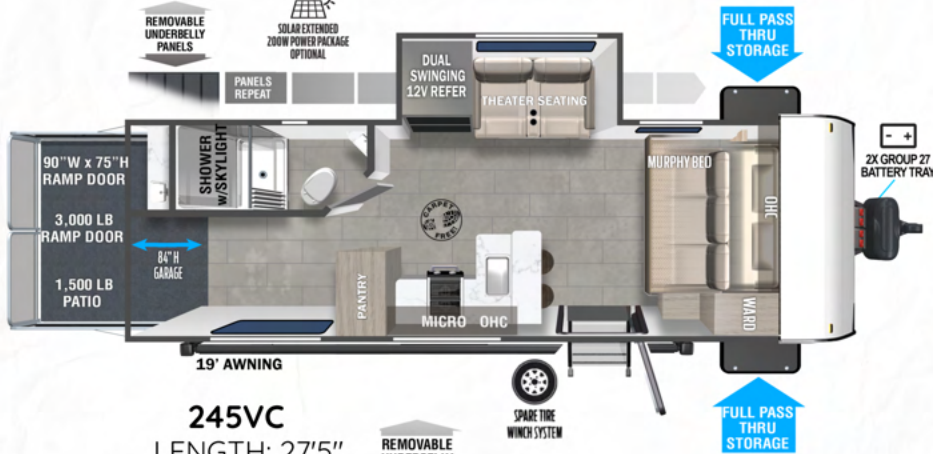
290RTK
 LENGTH: 36'6"
 UVW: 7,2743 LBS



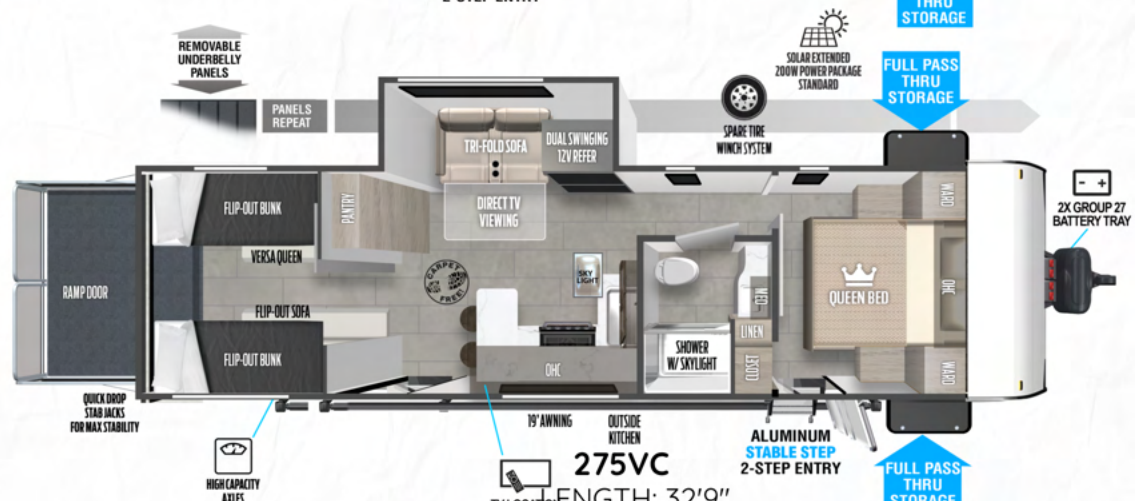
262VC
 LENGTH: 30'6"
 UVW: 7,633 LBS



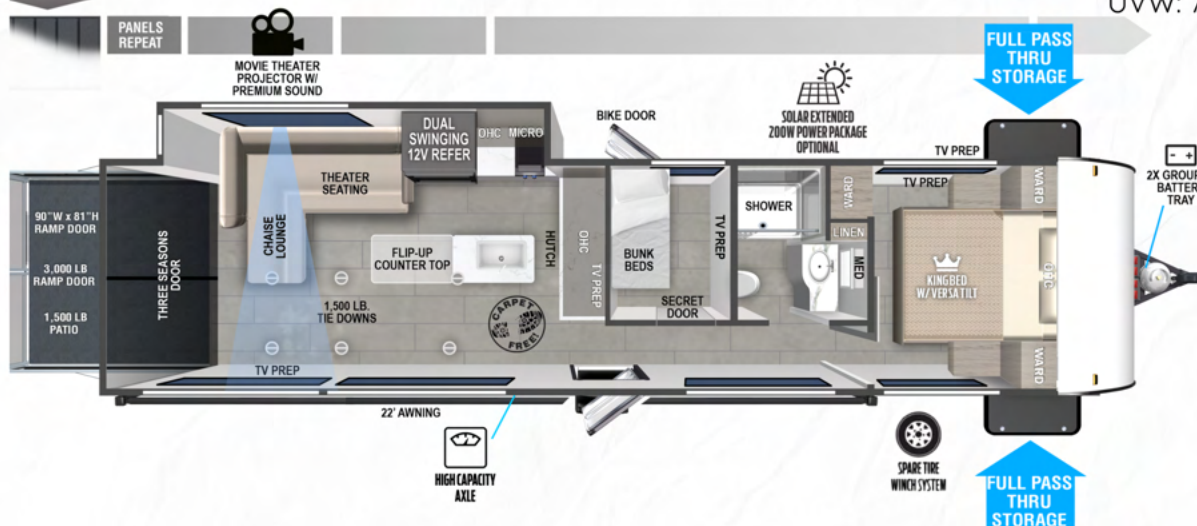
245VC
 LENGTH: 27'5"
 UVW: 6,208 LBS



275VC
 LENGTH: 32'9"
 UVW: 7,008 LBS



30VCVIEW
 LENGTH: 36'6"
 UVW: 8,585 LBS





For the most recent specs, pictures,
and 360 tours visit
forestriverinc.com/wildwood-fsx
or
Scan QR Code below



Your Wildwood Dealer



@wildwoodrvs



@WildwoodRV

24/7 EMERGENCY
ROADSIDE ASSISTANCE
WITH VEHICLE PURCHASE

TOWING
JUMP STARTS
TIRE CHANGES
FLUID DELIVERY
LOCKOUT
SERVICE

WINCH-OUT
MOBILE MECHANIC
TECHNICAL
SUPPORT
DEALER LOCATOR
SERVICES

**SPECIALIZED
DISPATCH SERVICES**

*VALID FOR 1 YEAR FROM DATE OF PURCHASE

CUSTOMER SATISFACTION

FOREST RIVER
RECOMMENDS YOU TO

BUY LOCAL

PREFERENTIAL SERVICE

PRODUCT INFORMATION

www.ForestRiverBuyLocal.com

FREE MEMBERSHIP
to Forest River Owners' Group

www.forestriverfrog.com

FOREST RIVER

A Berkshire Hathaway company.

Learn More
Scan this barcode using
a QR Reader on your
smart phone to learn
more about Forest River.

AVAILABLE ON THE
App Store

GET IT ON
Google play

Download the Forest River mobile app or visit our dynamic online manual to enhance your ownership experience. These interactive options provide incredible ease and insight into use, maintenance and enjoyment of your Forest River product. From "How-To" videos, pictures and illustrations of various components, systems and features, to fully searchable content and downloadable PDFs for individual component owner's manuals, answers are always just a click away

PRE-DELIVERY INSPECTION FACILITY

75,000 square feet of quality assurance. The bare essentials for a premium product. This state-of-the-art facility gives immediate daily feedback to production for quality assurance in every unit built.

UVW (Unloaded Vehicle Weight)* is the typical weight of the unit as manufactured at the factory. It includes all weight at the unit's axle(s) and tongue or pin and LP Gas. The UVW does not include cargo, fresh potable water, additional optional equipment or dealer installed accessories. *Estimated Average based on standard build optional equipment. CCC (Cargo Carrying Capacity) is the amount of weight available for fresh potable water, cargo, additional optional equipment and accessories. CCC is equal to GVWR minus UVW. Available CCC should accommodate fresh potable water (8.3 lbs per gallon). Before filling the fresh water tank, empty the black and gray tanks to provide for more cargo capacity. Estimated average based on standard build optional equipment. See back page for additional specification definitions. GVWR (Gross Vehicle Weight Rating) - is the maximum permissible weight of the unit when fully loaded. It includes all weights, inclusive of all fluids, cargo, optional equipment and accessories. For safety and product performance do NOT exceed the GVWR. GAWR (Gross Axle Weight Rating) is the maximum permissible weight, including cargo, fluids, optional equipment and accessories that can be safely supported by a combination of all axles. Each Forest River RV is weighed at the manufacturing facility prior to shipping. A label identifying the unloaded vehicle weight of the actual uAll information contained in this brochure is believed to be accurate at the time of publication. However, during the model year, it may be necessary to make revisions and Forest River, Inc., reserves the right to make all such changes without notice, including prices, colors, materials, equipment and specifications as well as the addition of new models and the discontinuance of models shown in this brochure. Therefore, please consult with your Forest River dealer and confirm the existence of any materials, design or specifications that are material to your purchase decision. © 2023 Ozark, a Division of Forest River, Inc., a Berkshire Hathaway company. All Rights Reserved

FOREST RIVER
WILDWOOD



FOREST RIVER WILDWOOD



22ERAS

UVW	HITCH	CCC	LENGTH	HEIGHT	CAPACITY (GAL)		
6,196	685	1,489	28' 2"	TBD	40	60	30



22RBS

UVW	HITCH	CCC	LENGTH	HEIGHT	CAPACITY (GAL)		
5,647	771	2,124	27' 0"	11' 2"	61	64	32



25RD

UVW	HITCH	CCC	LENGTH	HEIGHT	CAPACITY (GAL)		
6,704	912	3,295	31' 2"	11' 0"	50	65	40



25RKE

UVW	HITCH	CCC	LENGTH	HEIGHT	CAPACITY (GAL)		
5,978	780	1,802	29' 7"	10' 9"	61	64	32



26BDUB

UVW	HITCH	CCC	LENGTH	HEIGHT	CAPACITY (GAL)		
6,988	824	2,636	33' 9"	11' 2"	61	75	32



29VIEW

UVW	HITCH	CCC	LENGTH	HEIGHT	CAPACITY (GAL)		
8,001	1,010	1,809	34' 10"	11' 4"	40	60	30

WILDWOOD X LITE



210RBXL

UVW	HITCH	CCC	LENGTH	HEIGHT	CAPACITY (GAL)		
4,830	500	2,670	25' 2"	10' 8"	61	42	32



220BHXL

UVW	HITCH	CCC	LENGTH	HEIGHT	CAPACITY (GAL)		
4,691	563	2,872	27' 6"	10' 6"	40	64	28



24RLXL

UVW	HITCH	CCC	LENGTH	HEIGHT	CAPACITY (GAL)		
5,063	550	2,487	28' 11"	10' 5"	40	30	40



24VIEW

UVW	HITCH	CCC	LENGTH	HEIGHT	CAPACITY (GAL)		
6,205	781	2,37	29' 11"	10' 8"	61	64	32



241BHXL

UVW	HITCH	CCC	LENGTH	HEIGHT	CAPACITY (GAL)		
5,520	2,090	610	28' 11"	10' 8"	39	74	32

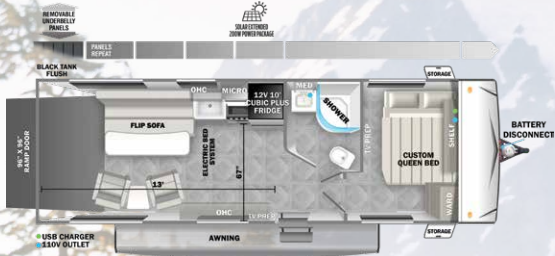


263BHXL

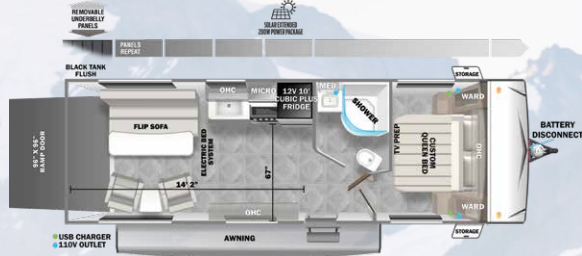
UVW	HITCH	CCC	LENGTH	HEIGHT	CAPACITY (GAL)		
6,440	768	1,328	32' 1"	10' 8"	61	74	32



TOY HAULERS



211SSXL



251SSXL

UVW	HITCH	CCC	LENGTH	HEIGHT	CAPACITY (GAL)
5,490	678	2,988	27' 10"	11' 8"	61 32 32

UVW	HITCH	CCC	LENGTH	HEIGHT	CAPACITY (GAL)
5,714	726	2,812	30' 1"	11' 8"	61 32 32



251SSXL



251SSXL



PRE-DELIVERY INSPECTION FACILITY
20,000 square feet of quality assurance. The bare essentials for a premium product. This state-of-the-art facility gives immediate daily feedback to production for quality assurance in every unit built.

CUSTOMER SATISFACTION



www.ForestRiverBuyLocal.com

Download our Forest River mobile app or visit our dynamic online manual to enhance your ownership experience. These interactive options provide incredible ease and insight into use, maintenance and enjoyment of your Forest River product.

Ranging from "How-To" videos, pictures and illustrations of various components, systems and features, to fully searchable content and downloadable PDFs for individual component owner's manuals, answers are always just a click away. View the online manual at www.forestriverinc.com/OnlineManual or download our FREE app from the App Store or Google Play!



FREE MEMBERSHIP
to Forest River Owners' Group

www.forestriverfrog.com



GVWR (Gross Vehicle Weight Rating) - is the maximum permissible weight of the unit when fully loaded. It includes all weights, inclusive of all fluids, cargo, optional equipment and accessories. For safety and product performance do NOT exceed the GVWR.

GAWR (Gross Axle Weight Rating) - is the maximum permissible weight, including cargo, fluids, optional equipment and accessories that can be safely supported by a combination of all axles.

UVW (Unloaded Vehicle Weight)* - is the typical weight of the unit as manufactured at the factory. It includes all weight at the unit's axle(s) and tongue or pin and LP Gas. The UVW does not include cargo, fresh potable water, additional optional equipment or dealer installed accessories.

CCC (Cargo Carrying Capacity)** - is the amount of weight available for fresh potable water, cargo, additional optional equipment and accessories. CCC is equal to GVWR minus UVW. Available CCC should accommodate fresh potable water (8.3 lbs per gallon). Before filling the fresh water tank, empty black and gray tanks for more cargo capacity.

*Estimated Average based on standard build optional equipment. ** Estimated average based on standard build optional equipment. Values estimated at time of printing.

Each Forest River RV is weighed at the manufacturing facility prior to shipping. A label identifying the unloaded vehicle weight of the actual unit and the cargo carrying capacity is applied to every Forest River RV prior to leaving our facilities. The load capacity of your unit is designated by weight, not by volume, so you cannot necessarily use all available space when loading your unit.

All information contained in this brochure is believed to be accurate at the time of publication. However, during the model year, it may be necessary to make revisions and Forest River, Inc., reserves the right to make all such changes without notice, including prices, colors, materials, equipment and specifications as well as the addition of new models and the discontinuance of models shown in this brochure. Therefore, please consult with your Forest River, Inc., dealer and confirm the existence of any materials, design or specifications that are material to your purchase decision.

©2024 Wildwood, a division of Forest River Inc., a Berkshire Hathaway company.



Learn More
Scan this barcode using a QR Reader on your smart phone to learn more about Forest River.



A Berkshire Hathaway company.

24/7 EMERGENCY ROADSIDE ASSISTANCE WITH VEHICLE PURCHASE*

TOWING
JUMP-STARTS
TIRE CHANGES
FLUID DELIVERY
LOCKOUT
SERVICE

WINCH-OUT
MOBILE MECHANIC
TECHNICAL
SUPPORT
DEALER LOCATOR
SERVICES



*VALID FOR 1 YEAR FROM DATE OF PURCHASE