

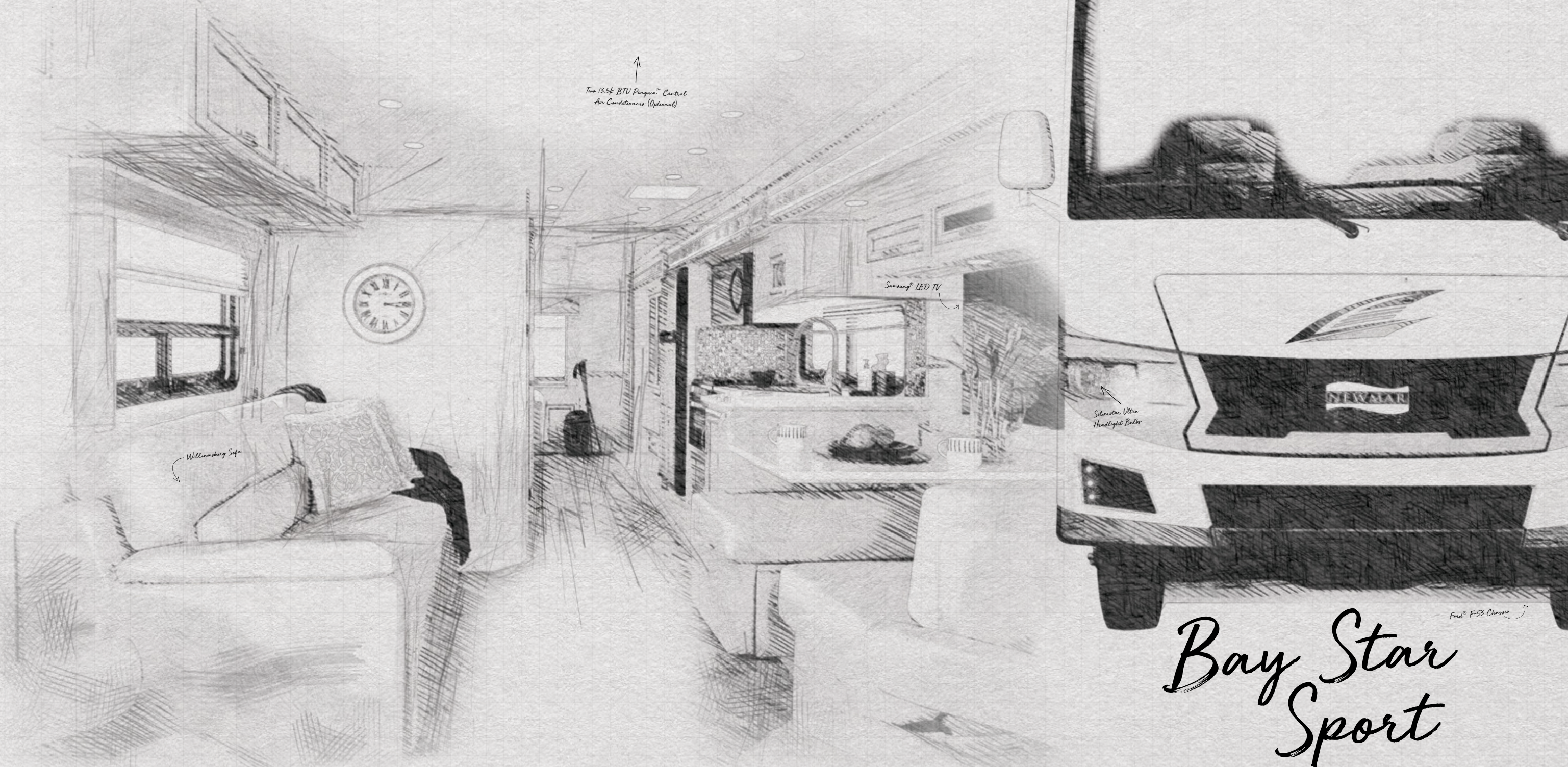
20  24	<i>Bay Star Sport</i> GAS MOTORCOACH	
---	---	---





# Built for adventure. Designed to delight.

Fit for every type of traveler, the 2024 Bay Star Sport provides an exceptional connection of convenience and comfort. This nimble RV is equipped with all the appointments and features needed for unforgettable adventures, no matter where you find yourself.



# Bay Star Sport

# Ford® F-53 Chassis



27'-32' / 6 floor plans

7.3-liter V8 Engine  
335 HP  
468 lb./ft. torque  
Chester Full-Paint  
Masterpiece Finish™  
Exterior



# Cockpit

## Six-Way Power Driver's Seat (Optional)

Manual Footrest and Tablet Holder  
on Passenger Seats

## Axxera Dash Radio

Apple CarPlay®  
SiriusXM® Ready  
10" Single Monitor

## Wireless Phone Chargers

## Side-View Cameras

## USB and USB-C Connections

## 180-Watt Harman/JBL Sound System





Floor plan 2912 shown with Stowe décor and Arctic cabinets

# Cabin

**Three Décor Options:  
Cervo\*, Stowe\*, Wrigley**

**Comfort Lounge Sofa\*\***

**Samsung® LED TV**

**32" Samsung® LED TV in Front Overhead  
(Optional)<sup>1</sup>**

\*New for 2023  
\*\*See Features and Options for all available furniture configurations  
<sup>1</sup>Floor plan dependent



# Cabin

**WiFiRanger Everest System  
with Aspen Router** (Optional)

**13.5K BTU Penguin™ Heat Pump  
Central Air Conditioner**

Two 13.5K or One 15K BTU Penguin™ Heat  
Pump Central Air Conditioner (Optional)

**Drop Down Bunk Over Cab** (Optional)\*

**Dual-Pane Windows**



Floor plan 2912 with Stowe décor and Arctic cabinets

\*Available for floor plan 3014



# Galley & Dinette

**8 Cu. Ft. Norcold® Refrigerator**

**Three-Burner Range with Oven**

**30" Non-Convection Black Microwave**

**Glazed Maple Cabinets**

Available in Three Matte Finish Color Options

Soft-Close Cabinet Doors and Drawers

**Polished Solid-Surface Countertop**

**Kitchen Pantry**

**Williamsburg Booth Dinette Sleeper**

Storage Drawers Beneath



*\*Additional dinette configurations available; see Features and Options for details*







# Master Bedroom

**King Bed\* with Pillow Top Mattress**  
(Optional)

**32" Samsung® LED TV**

**Large Shirt Wardrobe**

*\*Bed size varies by floor plan*



# Bathroom

**Matte Solid-Surface Countertops**

**Rectangular or Radius Shower\*  
with Shower Door**

**Gas/Electric Water Heater  
with Electric Ignition**

**Linen and Vanity Cabinets**



*\*Shower sizes vary by floor plan*



# Exterior & Storage

**Exterior Entertainment Center** (Optional)\*

32" Samsung® LED TV

AM/FM Radio

Speakers in Sidewall

**SilverStar® Ultra Headlight Bulbs**



# Exterior

**Industry-Exclusive Full-Paint  
Masterpiece Finish™**

Three Graphic Design and Color Options



*interior & exterior*  
*Design Options*



# Bodin



Awning Color: Black/Gray

**CERVO INTERIOR** a. Furniture/Fabric b. Flooring c. Counter Top



*\*Exterior colors and interior décor options can be matched to customer preference.*

**CABINET FINISHES**



*\*Available in Matte Finish*

# Chester



Awning Color: Black/Gray

**STOWE INTERIOR** a. Furniture/Fabric b. Flooring c. Counter Top



**CABINET FINISHES**



*\*Exterior colors and interior décor options can be matched to customer preference.*

*\*Available in Matte Finish*

# Newquay



Awning Color: Black/Gray

## WRIGLEY INTERIOR a. Furniture/Fabric b. Flooring c. Counter Top



*\*Exterior colors and interior décor options can be matched to customer preference.*

## CABINET FINISHES



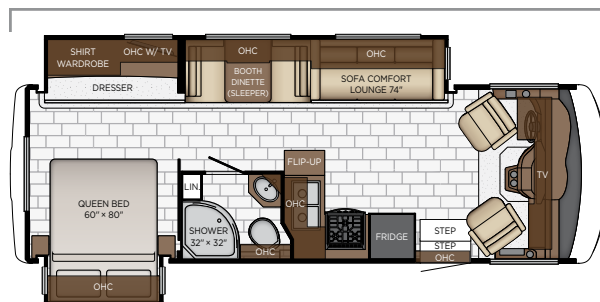
*\*Available in Matte Finish*



# Floor Plan Specifications

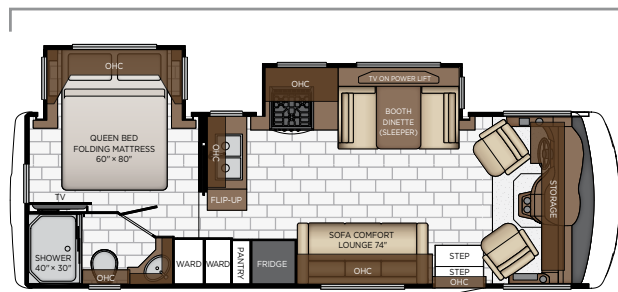


Length: 27' 11"



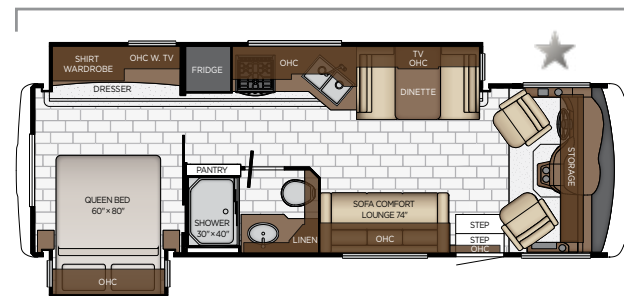
<b>2720</b>	Length	27' 11"	Grey Tank	60 gal.
	Width	101.5"	Sewage Tank	40 gal.
	App. Overall Height	12' 04"	Water Tank	75 gal.
	Interior Width	95.5"	Propane Tank	25 gal.
	Interior Height	80"	Furnace	30,000 btu

Length: 28' 11"



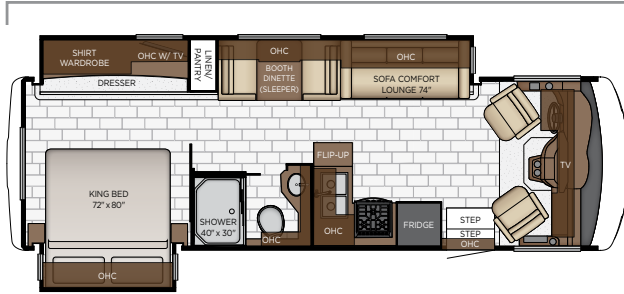
<b>2813</b>	Length	28' 11"	Grey Tank	60 gal.
	Width	101.5"	Sewage Tank	40 gal.
	App. Overall Height	12' 04"	Water Tank	75 gal.
	Interior Width	95.5"	Propane Tank	25 gal.
	Interior Height	80"	Furnace	30,000 btu

Length: 29' 11"



<b>2912</b>	Length	29' 11"	Grey Tank	60 gal.
	Width	101.5"	Sewage Tank	40 gal.
	App. Overall Height	12' 04"	Water Tank	75 gal.
	Interior Width	95.5"	Propane Tank	25 gal.
	Interior Height	80"	Furnace	30,000 btu

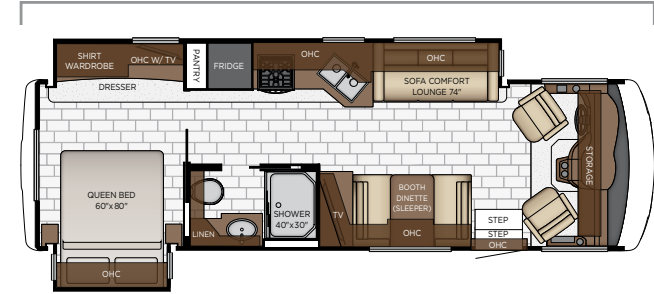
Length: 29' 11"



**2920**

Length	29' 11"	Grey Tank	60 gal.
Width	101.5"	Sewage Tank	40 gal.
App. Overall Height	12' 04"	Water Tank	75 gal.
Interior Width	95.5"	Propane Tank	25 gal.
Interior Height	80"	Furnace	30,000 btu

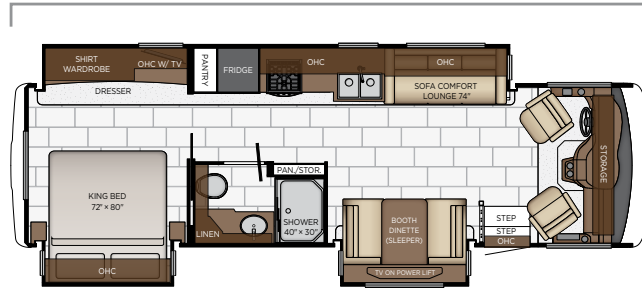
Length: 30' 11"



**3014**

Length	30' 11"	Grey Tank	60 gal.
Width	101.5"	Sewage Tank	40 gal.
App. Overall Height	12' 04"	Water Tank	75 gal.
Interior Width	95.5"	Propane Tank	25 gal.
Interior Height	80"	Furnace	35,000 btu

Length: 32' 11"



**3225**

Length	32' 11"	Grey Tank	60 gal.
Width	101.5"	Sewage Tank	40 gal.
App. Overall Height	12' 04"	Water Tank	75 gal.
Interior Width	95.5"	Propane Tank	25 gal.
Interior Height	80"	Furnace	30,000 btu

# Quality You Can Feel

Like a fine home, the 2024 Bay Star Sport is framed 16 inches on center and is covered by a fiberglass roof with an integrated gutter rail.

FORD®											
FLOOR PLAN	ENGINE HP	AXLE RATIO	FUEL CAP.	WHEEL BASE	FRONT GAWR	REAR GAWR	TAG GAWR	GVWR	GCWR	APP. UVW	APP. NCC
2720	335	5.86	80 gal.	178	7500 lb.	13500 lb.	-	20500 lb.	26000 lb.	17550 lb.	2950 lb.
2813	335	5.86	80 gal.	182	7500 lb.	13500 lb.	-	20500 lb.	26000 lb.	17650 lb.	2850 lb.
2912	335	5.86	80 gal.	190	8000 lb.	15000 lb.	-	22000 lb.	26000 lb.	18150 lb.	3850 lb.
2920	335	5.86	80 gal.	190	8000 lb.	15000 lb.	-	22000 lb.	26000 lb.	18250 lb.	3750 lb.
3014	335	5.86	80 gal.	200	8000 lb.	15000 lb.	-	22000 lb.	26000 lb.	18800 lb.	3200 lb.
3225	335	5.86	80 gal.	220	8000 lb.	15000 lb.	-	22000 lb.	26000 lb.	20050 lb.	1950 lb.

The content in our literature depicts and describes products that are subject to change. For the most recent images and information, please visit [NewmarCorp.com](http://NewmarCorp.com).

Lengths, heights, widths, and dry weights are approximate. Weight will vary based on optional equipment added to the above base weight.

**GAWR:** Gross Axle Weight Rating is the maximum permissible weight for an axle.

**GVWR:** Gross Vehicle Weight Rating is the maximum permissible weight for a fully loaded motor coach.

**GCWR:** Gross Combination Weight Rating is the value specified by the manufacturer of the vehicle as the maximum allowable loaded weight of this motor coach and any towed trailer or towed vehicle.

**UVW:** Unloaded Vehicle Weight is the weight of this motor coach as built at the factory with full fuel, engine oil, and coolants. Does not include cargo, fresh water, propane gas, or dealer-installed accessories.

**NCC:** Net Carrying Capacity is the maximum weight of all occupants, including the driver, personal belongings, food, fresh water, waste water, propane gas, tools, tongue weight of towed vehicle, dealer-installed accessories, etc., that can be carried by the motor coach.

**Specifications supplied by the chassis manufacturer.**

**Bay Star Sport R-Values:**

- Roof R-Value = 19
- Sidewall R-Value = 11
- Floor R-Value = 16
- Basement R-Value = 4

# Features & Options



**EXTERIOR FEATURES**

- Full-Paint Masterpiece Finish™ with Clearcoat Finish
- Diamond Shield Protection on Front Cap
- Automatic Step for Entrance Door
- Convex Exterior Mirrors with Defrost and Remote Control
- Rear Hitch for Towing Car
- Assist Handle at Entrance Door
- Mud Flaps
- Smart Level Hydraulic Leveling Jacks with Bluetooth Compatible Touch Pad
- Undercoating

**OPTIONS**

- Rear Ladder\*
- Flag Pole Bracket

**CONSTRUCTION FEATURES**

- Diflex II™ Roof with Walkable Deck
- Gelcoated Fiberglass Exterior Sidewalls, Front and Rear Caps
- Aluminum-Frame Sidewalls and Roof Construction, on 16" Center
- 5/8" Foam Insulation Laminated in Sidewalls and Ceiling
- Automatic Mechanical Lock Arms on Slideout Rooms—Scissor Style

**OPTIONS**

- Egress Door with Ladder System\*

**WINDOWS, AWNINGS, & VENTS**

- One-Piece Tinted Windshield
- Frameless Double-Pane Tinted Safety-Glass Windows
- Power Vent with in Kitchen and Bathroom
- Skylight Above Shower
- Carefree Travel'r Side Awning
- Rear Window in Bedroom\*

**OPTIONS**

- Slideout Covers, One Full, One Short
- Slideout Covers, Two Short

**CHASSIS FEATURES**

- Ford® F-53 Chassis with 7.3 Ltr V-8 Engine, 20,500 lb. on 27'-28' Floor Plans
- Ford® F-53 Chassis with 7.3 Ltr V-8 Engine, 22,000 lb. on 29'-32' Floor Plans
- Cruise Control

- Tilt Steering Wheel
- Stainless Steel Wheel Simulators
- Anti-Lock Braking System
- Electronic Stability Control

**AIR CONDITIONING & HEATING**

- 13.5K BTU Penguin™ Heat Pump
- Dash Heater and Air Conditioner
- Propane Gas Furnace with Ducted Heat
- Driver and Passenger Overhead Dash Fans

**OPTIONS**

- 15K BTU Penguin™ Heat Pump
- Two 13.5K BTU Penguin™ Heat Pump, 5.5 Cummins Onan® Generator, 50 Amp Service with Energy Management System

**ELECTRICAL FEATURES**

- 4.0 kW Cummins Onan® Generator with One Remote Switch and Automatic Changeover
- 30 Amp Electrical Service with Flexible Cord and Automatic Transfer Switch
- Two 12 Volt House Batteries
- Manual Battery Disconnect Switch for House Battery
- 12 Volt Auxiliary Receptacle on Dashboard
- 60 Amp Converter
- Dash Radio, Cameras and Monitors to Power Up from both House Batteries and Ignition
- Daytime Running Lights
- Emergency Engine Start Switch
- Multiplex Lighting Control System
- Multiplex Monitor System 10.1" In Center of Coach with Interior Lighting and HVAC Controls
- LED Interior Lights
- Manually Operated Hold-To-Run Slideout Switch
- Cable TV Connection
- USB Outlet at Dash for Driver Use
- Drain Lift Pump with 1200 Watt Inverter\*
- Lights in Exterior Storage Compartments
- Wireless Phone Charger for Driver
- LED Lighting on Awning

**OPTIONS**

- 1200 Watt Inverter Ran to TV's\*
- 1200 Watt Pure Sine Inverter for Bedbase, Nightstand and Overhead Cabinet Recepticals
- 2000 Watt Pure Sine with CPAP Prep, Six 6-Volt Batteries

**PLUMBING & BATH FEATURES**

- Demand Water System
- Sewage Holding-Tank Rinse
- Water Heater Bypass System
- Dometic® 310 China Bowl Stool
- ABS Shower Surround with Shower Door
- Systems Monitor Panel
- Exterior Shower Located on Off Door Side

**INTERIOR FEATURES**

- Vinyl Covered Ceiling Panels
- Pleated Window Shades
- Decorative Wall Art
- Mini Blinds in Kitchen and Bathroom Windows
- Vinyl Tile Floor in Kitchen, Living Area and Bathroom
- Carpeting on all Slideout Floors
- Interior Assist Handle at Main Entrance Door
- Bedsread with Accent Pillow
- Inlaid Six Panel Design Interior Passenger Doors
- Auto Motion Power Shade at Windshield and Manual Shades at Driver and Passenger Side Windows
- Dash Panel Color Coordinated ABS
- Integrated Window Blind System on Entry Door

**CABINETS & FURNITURE**

- Calypso Glazed Maple Mitered Flat Designer Cabinet Doors—Matte Finish
- Concealed Hinges on Cabinet Doors
- Drawers Underneath Booth Dinette Seats
- Drawers with Full Extension Ball Bearing Guides
- Polished Solid-Surface Countertop in Kitchen with Undermounted Stainless Steel Sink and Sink Covers

- Solid-Surface Countertops in Bathroom and Bedroom
- Williamsburg Sofa and Front Seats
- Passenger Seat with Manual Foot Rest and Integrated Seat Belts
- Passenger Seat Work Station
- Lifts on Bed Top
- Smooth Top Mattress
- Mesh Cell Phone Holder at Each Bunk Bed\*
- Soft-Close Cabinet Drawers

**OPTIONS**

- Amaretto Glazed Maple Mitered Flat Designer Cabinets—Matte Finish
- Arctic “B” Glazed Maple Mitered Flat Designer Cabinets—Matte Finish
- Drop Down Bunk Bed Over Driver and Passenger Seats, Extends to Windshield with Bunk Ladder
- Plush Pillow Top Mattress\*
- Folding Cockpit Table
- Six-Way Power Driver Seat
- King Bed\*
- Visionary Trifold Sofa 74” with Memory Foam Mattress

**APPLIANCES & ACCESSORIES**

- Three-Burner Range with Oven
- Range Hood with Light and Fan
- Microwave
- Norcold® 8 Cu. Ft. Refrigerator
- Raised Panel Refer Door Insert
- 6 Gal. Gas/Electric Water Heater with Electric Ignition

**OPTIONS**

- Norcold® 10 Cu. Ft. Refrigerator
- Norcold® 15 Cu. Ft. 4-Door Refrigerator with Icemaker (Removes Pantry)

## AUDIO, VIDEO & ACCESSORIES

Samsung® LED TV in Living Area (TV Sizes Vary Per Floor Plan)

32" LED TV in Bedroom

Dash Radio with Harman/JBL 180 Watt Sound System

Rearview Colored Monitor System with Audio

Side-View Cameras Displayed onto Rearview Monitor Screen

High Definition Component Wiring

Winegard Digital Crank-Up TV Antenna

TV Jack and 110 Volt Receptical in Door Side Exterior Storage Compartment

Satellite Dish Prep on Roof

10 Bc Fire Extinguisher, Smoke Detector, Propane and Carbon Monoxide Detector

### OPTIONS

WiFiRanger Denali/Spruce LTE

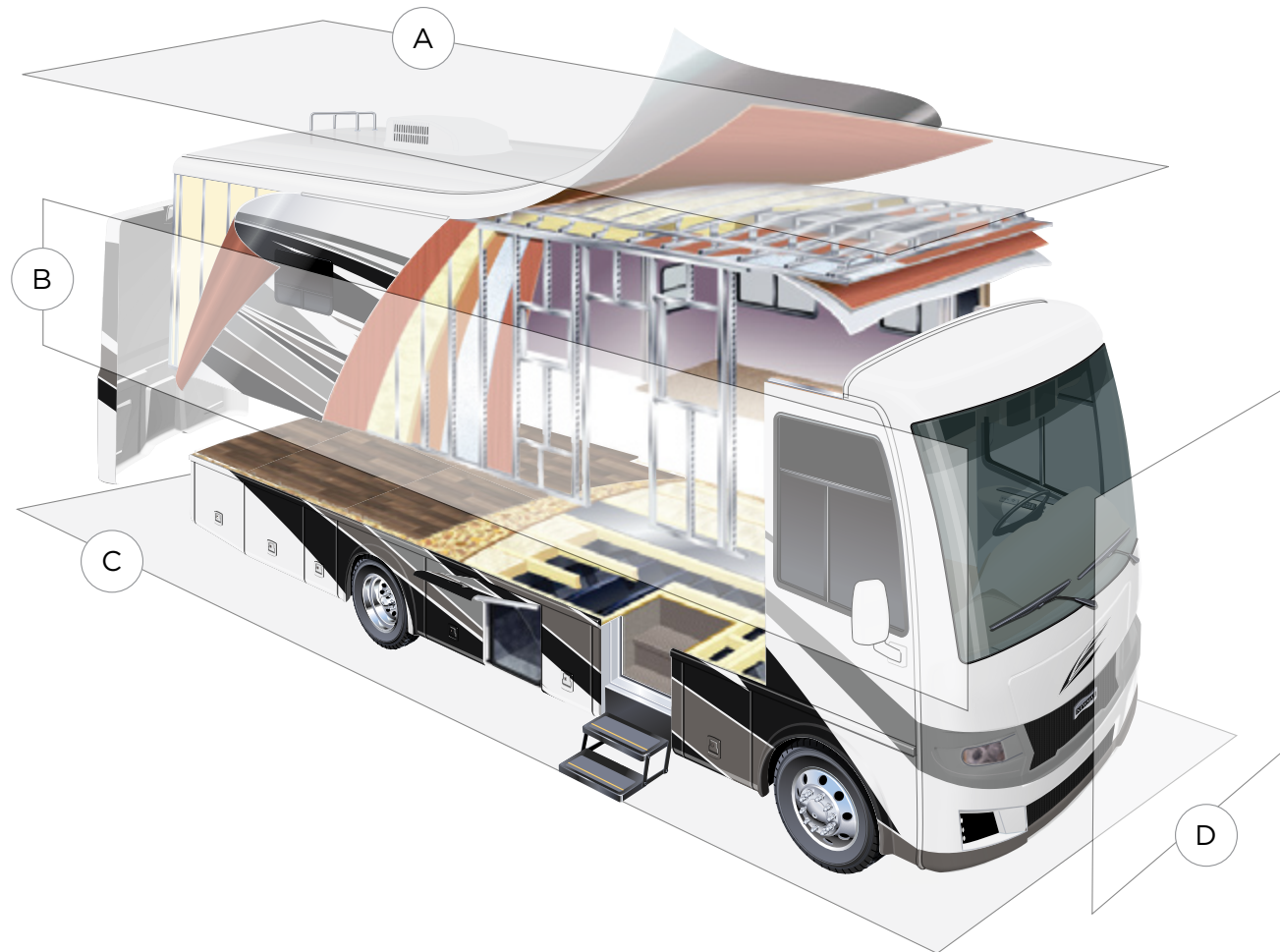
WiFi System Everest with Aspen Interior Router

Winegard Rayzar Automatic Digital TV Antenna

Exterior Entertainment Center in Sidewall with Samsung® 32" LED TV, AM/FM Radio and Speakers on 2813 and 3014 Floor Plans Only







## A. ROOF

Diflex II™ Roof  
 3/8" Decking  
 Batten Insulation  
 A/C Ducting  
 16" on Center Aluminum Rafter Framing  
 5/8" Bead Foam  
 Padded Vinyl Overlay

## B. SIDEWALL

Interior Wall Panel  
 5/8" Bead Foam  
 Batten Insulation  
 Composite One-Piece  
 Gelcoat Exterior Sidewall  
 Aluminum Framing

## C. FLOOR

Carpet/Tile  
 Carpet Padding  
 5/8" Floor Decking  
 Batten Insulation  
 16" on Center Wood Framing  
 Polyethylene Moisture Barrier

## D. EXTERIOR

15K BTU Penguin™ Heat Pump Central  
 Air Conditioner  
 One-Piece Bonded Windshield  
 Coated Aluminum Wheels  
 Frameless, Double-Pane,  
 Tinted Safety Glass Windows  
 Top Hinge Baggage Doors  
 Batten Insulation in Front and Rear Cap

# The Newmar Customer Experience

The Newmar Difference™ goes beyond our industry-leading motor coaches to provide you with an unrivaled ownership experience.



## Quality from the Start

Every Newmar is crafted one at a time by folks who have spent an average of eight years building them. And each coach we assemble must undergo more than 1,000 tests and checks before ever leaving our factory.



## Carefully Selected Dealers

We view our dealership network in terms of quality, not quantity. Each of our dealers acts as a partner in our shared mission to exceed your highest of expectations, for an ownership experience that's second to none from day one.



## Everything in One Place

As a Newmar owner, you'll find resources specific to your coach through Newgle, an easy-to-use knowledge base that houses everything from user guides to technical support documents.



## Friends for Life

Meet fellow owners through the Newmar Kountry Klub, a top social club for RV travelers that hosts rallies and other special events throughout the U.S. and Canada.



## Seamless Service

When you join the Newmar family, we pair you with a dedicated service specialist with expert knowledge of your exact coach. Our service specialists guarantee dealer warranty authorizations within four business hours and ship all in-stock parts the same day, free of charge.



## Rock-Solid Protection

All models include a one-year/unlimited mileage limited warranty and a five-year, non-transferable structural warranty that covers your coach's superstructure in the event it fails to perform. Ask your Newmar dealer for more details.

*Our Partners*

The Newmar Difference™ begins with suppliers dedicated to providing our customers with unrivaled quality, comfort, and support.



*BASF*

The Coatings division of BASF is a global expert in the development and production of innovative and sustainable OEM and refinish coatings. Coatings by BASF—solutions beyond your imagination.



*Industrial Finishes*

Industrial Finishes has supported RV manufacturers for over four decades, offering paint products that deliver uncompromising quality and provide your coach with a true Masterpiece™ finish.



Driven By You

*Freightliner  
Custom Chassis*

Freightliner Custom Chassis are renowned for their exceptional ride, excellent maneuverability, advanced technology, and nationwide 24/7 factory-direct support.



*RiverPark*

From Samsung® 4K TVs and Xite Infotainment systems to Bose® soundbars and JBL and Infinity premium audio systems, RiverPark helps you experience a higher level of technology in your Newmar coach.



*Spartan RV Chassis*

An American company with over 30 years of experience in designing and manufacturing the premier motorhome chassis, Spartan delivers superior performance, exceptional safety ratings, and industry-leading technology.



WHEN YOU KNOW THE DIFFERENCE<sup>SM</sup>