

PUMA

Ultra Lites | Travel Trailers | Fifth Wheels | Toy Haulers | Destination

PUMA

P A L O M I N O

SINCE 1968

**Ultra Lites
Travel Trailers
Fifth Wheels
Toy Haulers
Destination**



AN RV FOR EVERY LIFESTYLE

Puma has built its success by offering the broadest selection of RV's for every lifestyle, while incorporating the latest in industry innovations. Customer driven features lead Puma's line-up with floorplans that capitalize on the most popular features, in bunk, non-bunk, Toy Hauler and Destination trailers. Puma's selection of popular packages adds value for years of fun with friends and family. Campers get a lot of comfort for their investment with many popular standard features.

OUTSIDE KITCHEN OPTIONS

available on select models



**MICRO KITCHEN
W/GRIDDLE**

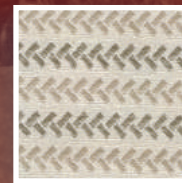


**MINI KITCHEN W/
GRIDDLE**

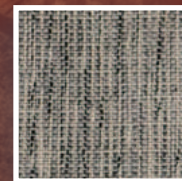
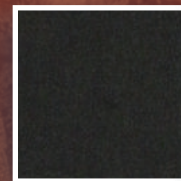


**OUTSIDE KITCH-
EN W/GRIDDLE**

DECOR OPTIONS



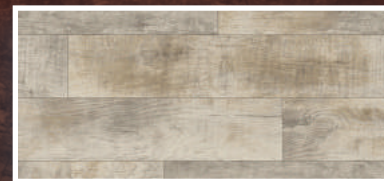
CAFE LATTE



GRANITE



SLATE



FLOORING

PUMA CONSTRUCTION

**LONGER LASTING.
BETTER BUILT.**

*Smooth,
Aerodynamic
Radius Front
Metal with
Bold Exterior
Graphics*



- A.** AlphaPly Roofing Membrane (Limited lifetime warranty)
- B.** King HD TV Antenna & WiFi Prep.
- C.** 3/8" Roof Decking
- D.** 4-1/2" Crowned Truss Roof Rafters
- E.** Insulated Ducting for Air Conditioning Runs
- F.** Extended Molded ABS Fender Skirt
- G.** Sturdy .024 and .030 Gauge Aluminum Skin
- H.** Lighted LED Speakers
- I.** Solid Aluminum Triple Steps
- J.** New Aluminum Wheels

- K.** R-7 Fiberglass Insulation Cut and Glued Between Sidewall Studs
- L.** Sidewall Studs Spaced 16" Apart
- M.** Silicone Sealed Radius Compartment Doors
- N.** Front Diamond Plate
- O.** Roof & Side Mount Solar Prep
- P.** Molded ABS LP Tank Cover
- Q.** Optional Lighted Power Jack
- R.** Rugged, Powder Coated Steel I-Beam Frame
- S.** Floor Ducted Heat
- T.** Puma Next Generation™ Enclosed Water Tanks

- U.** Congoleum® Designer Carefree Linoleum with 3 – Year Cold Crack Warranty
- V.** Longitudinal Floor Studding Spaced 12" Apart
- W.** 43 Gallon Fresh Water Tank
- X.** Steel Crossmembers for Added Support
- Y.** Marine Grade Carpet with Pad on Slide Outs
- Z.** 5/8" Araucopy Plywood Floor Decking (25 Year manufacturer's limited warranty)

ULTRA LITES


12FBX

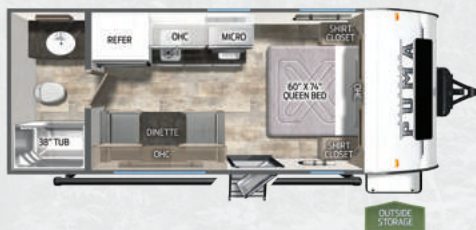
LENGTH 18' 6" UVW 2839 HITCH 410 CCC 1071 AWNING 10'


16BHX

LENGTH 21' 6" UVW 3144 HITCH 370 CCC 726 AWNING 12'


16DSX

LENGTH 22' 6" UVW 3714 HITCH 415 CCC 1101 AWNING 14'


16QBX

LENGTH 21' 6" UVW 3124 HITCH 380 CCC 756 AWNING 13'


18RD

LENGTH 23' 2" UVW 3799 HITCH 455 CCC 1055 AWNING 14'

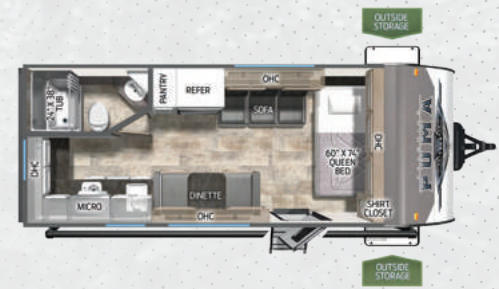
ULTRA LITES: 8' WIDE



18BHX

LENGTH 23'7" U/VW 4548 HITCH 515 CCC 1067 AWNING 16'

OPT MINI KITCHEN W/GRIDDLE



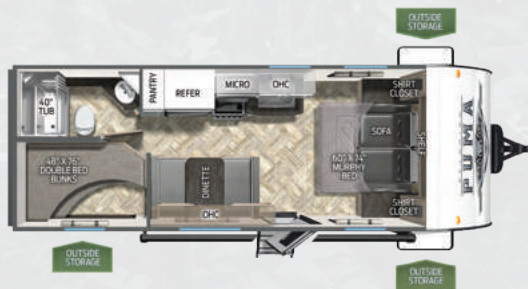
18RKX

LENGTH 23'10" U/VW 4018 HITCH 415 CCC 1497 AWNING 14'

OPT MICRO KITCHEN W/GRIDDLE



DOUBLE AXLE: 8' WIDE



20BHX

LENGTH 26' U/VW 4458 HITCH 450 CCC 1542 AWNING 19'

OPT MINI KITCHEN W/GRIDDLE



20RLX

LENGTH 24'10" U/VW 4208 HITCH 600 CCC 1500 AWNING 16'

TRAVEL TRAILERS



22FKQ

LENGTH 26'5" U/VW 5549 HITCH 820 CCC 1500 AWNING 19'

OPT MICRO KITCHEN W/GRIDDLE



23BHQ

LENGTH 30'2" U/VW 5403 HITCH 695 CCC 1500 AWNING 19'

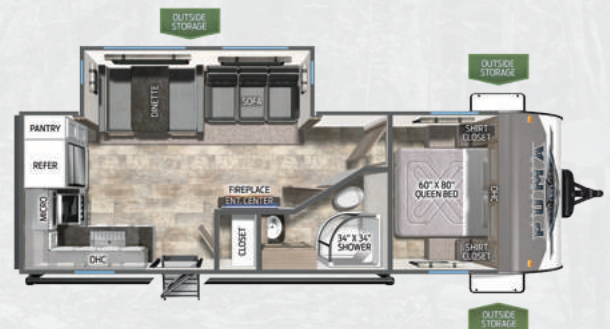
OPT MINI KITCHEN W/GRIDDLE



25BHS

LENGTH 30'5" U/VW 6028 HITCH 650 CCC 1500 AWNING 19'

OPT MINI KITCHEN W/GRIDDLE



25RKQB

LENGTH 29'7" U/VW 6048 HITCH 670 CCC 1550 AWNING 20'

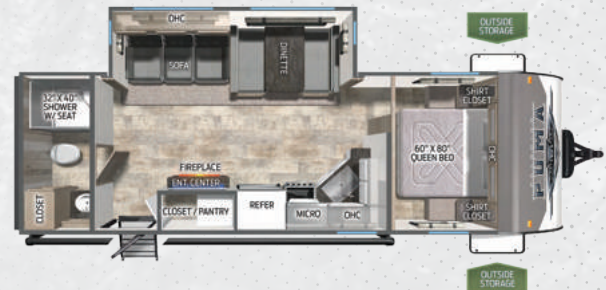
OPT MICRO KITCHEN W/GRIDDLE



26FKDS

LENGTH 29'11" U/VW 6593 HITCH 975 CCC 1600 AWNING 21'

OPT MICRO KITCHEN W/GRIDDLE



26RBSS

LENGTH 29'10" U/VW 6033 HITCH 610 CCC 1577 AWNING 21'

OPT MICRO KITCHEN W/GRIDDLE



26RLS

LENGTH 31'11" U/VW 6588 HITCH 910 CCC 1322 AWNING 20'

OPT MICRO KITCHEN W/GRIDDLE



27RBDS

LENGTH 33'7" U/VW 7468 HITCH 1030 CCC 1500 AWNING 21'

OPT MICRO KITCHEN W/GRIDDLE



27RLSS

LENGTH 31'7" U/VW 6203 HITCH 756 CCC 1553 AWNING 21'

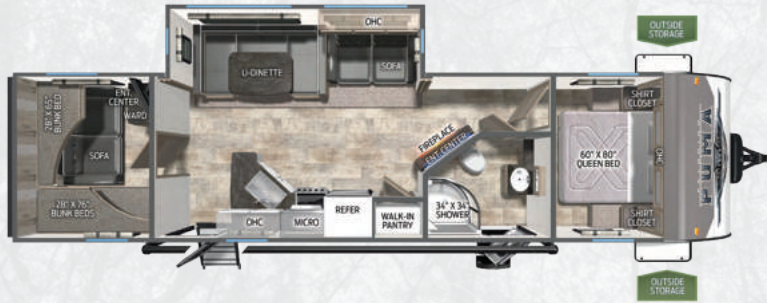


28BHFQ

LENGTH 34'3" U/VW 6943 HITCH 830 CCC 1500 AWNING 21'

OPT MICRO KITCHEN W/GRIDDLE

TRAVEL TRAILERS

**28BHSS**

LENGTH 36'10" U/VW 7513 HITCH 835 CCC 1550 AWNING 20'

OPT MINI KITCHEN W/GRIDDLE

**28BHSS2**

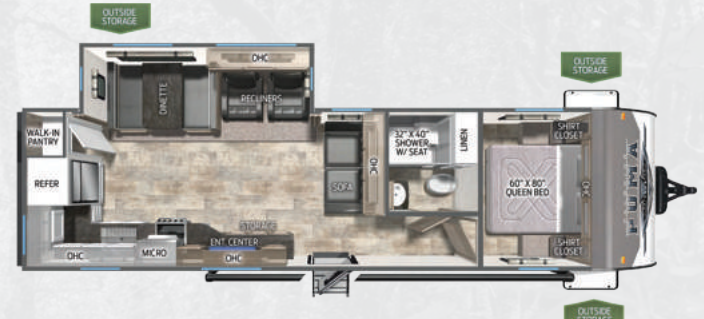
LENGTH 36'10" U/VW 7574 HITCH 843 CCC 1489 AWNING 20'

OPT MINI KITCHEN W/GRIDDLE

**28DBFQ**

LENGTH 32'10" U/VW 6868 HITCH 694 CCC 1632 AWNING 21'

OPT MICRO KITCHEN W/GRIDDLE

**28RKQS**

LENGTH 34'5" U/VW 7253 HITCH 870 CCC 1547 AWNING 21'

OPT MICRO KITCHEN W/GRIDDLE

**29BHQB**

LENGTH 37'5" U/VW 7638 HITCH 840 CCC 2002 AWNING 19'

OPT MINI KITCHEN W/GRIDDLE

**29BHSQ**

LENGTH 36'10" U/VW 8403 HITCH 1115 CCC 2000 AWNING 21'

OPT MINI KITCHEN W/GRIDDLE



TRAVEL TRAILERS

**29RDBS**

LENGTH 34'10" UVW 7503 HITCH 1020 CCC 1500 AWNING 20'

OPT MICRO KITCHEN W/GRIDDLE

**30RKQS**

LENGTH 36'1" UVW 7974 HITCH 1085 CCC 1626 AWNING 21'

OPT MICRO KITCHEN W/GRIDDLE

**31FKRK**

LENGTH 37'11" UVW 8333 HITCH 1130 CCC 1597 AWNING 21'

OPT MICRO KITCHEN W/GRIDDLE

**31QBBH**

LENGTH 37'10" UVW 8231 HITCH 1049 CCC 1764 AWNING 21'

OPT OUTSIDE KITCHEN W/GRIDDLE
OPT MINI KITCHEN W/GRIDDLE**31RLQS**

LENGTH 36'1" UVW 8808 HITCH 975 CCC 1692 AWNING 13'

**32BH2B**

LENGTH 38'6" UVW 9023 HITCH 1030 CCC 2207 AWNING 21'

OPT OUTSIDE KITCHEN W/GRIDDLE

TRAVEL TRAILERS

11



32BHQS

LENGTH 38'9" U/VW 9072 HITCH 1045 CCC 1728 AWNING 19'

OPT MINI KITCHEN W/GRIDDLE



32BHFS

LENGTH 38'9" U/VW 9608 HITCH 1175 CCC 1700 AWNING 21'

OPT MINI KITCHEN W/GRIDDLE



32MBDS

LENGTH 38'9" U/VW 8833 HITCH 1090 CCC 1700 AWNING 15'

OPT MICRO KITCHEN W/GRIDDLE



32RBFQ

LENGTH 36'11" U/VW 8998 HITCH 948 CCC 1502 AWNING 21'

OPT OUTSIDE KITCHEN W/GRIDDLE
MINI KITCHEN W/GRIDDLE



32RBFQ2

LENGTH 36'11" U/VW 9237 HITCH 932 CCC 1263 AWNING 21'





FIFTH WHEELS



253FBS

LENGTH 28'6" UYW 6788 HITCH 1128 CCC 2012 AWNING 17'

OPT MICRO KITCHEN W/GRIDDLE



255RKS

LENGTH 28'5" UYW 6754 HITCH 1102 CCC 2046 AWNING 18'

OPT MICRO KITCHEN W/GRIDDLE



257RESS

LENGTH 30'8" UWW 7419 HITCH 1262 CCC 1981 AWNING 18'

OPT MICRO KITCHEN W/GRIDDLE



265RDS

LENGTH 30'5" UWW 7259 HITCH 1135 CCC 2104 AWNING 17'

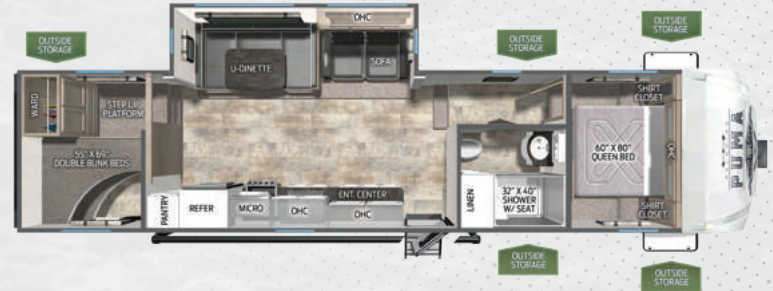
OPT MICRO KITCHEN W/GRIDDLE



295BHSS

LENGTH 34'4" UWW 8732 HITCH 1358 CCC 2018 AWNING 18'

OPT OUTSIDE KITCHEN W/GRIDDLE
MINI KITCHEN W/GRIDDLE



299BHS

LENGTH 36'4" UWW 8533 HITCH 1225 CCC 2000 AWNING 20'

OPT MINI KITCHEN W/GRIDDLE



315BHHS

LENGTH 38'6" UWW 9318 HITCH 1560 CCC 2442 AWNING 21'

OPT MICRO KITCHEN W/GRIDDLE



TOY HAULERS



VALUE LEADER PACKAGE (REQ.)

- Rear Zip Screen
- ABS Tub Surround
- Bedspread & Shams
- TV Antenna w/Booster & Cable Hook-up
- Tinted Windows
- Super Lube Axles
- Front & Rear Stab Jacks
- Bath Skylight
- Congoleum® Linoleum w/3-Year Cold Crack Warranty
- LED Lighting
- Bedroom TV Hook-up
- Folding Grab Handle
- WiFi Prep

ELITE PACKAGE (REQ.)

- Electric Awning w/ LED Light Strip
- 21" Stainless Steel Oven & Range Hood
- 1.3 Cu. Ft. Stainless Steel Microwave
- AM/FM/Bluetooth® Stereo
- (2) Outside Speakers
- Outside Shower
- Spare Tire
- Front Diamond Plate
- 13,500 BTU Ducted A/C
- 6 gal. Gas/Electric Water Heater
- Night Roller Shades
- 11 Cu. Ft. (12V) Black Glass Faced Fridge w/Dual Swing, Scratch Resistant Doors

INTERIOR HEIGHTS FROM FLOOR

HEIGHTS	25TH	27TH	29TH
ONE ELECTRIC BED	84"	84"	84"
TWO ELECTRIC BEDS	72"	72"	72"
HAPPYJACK	84"	84"	84"
ENTRANCE AT DOOR	86"	86"	86"
TO BOTTOM OF A/C	90.5"	90.5"	N/A
TO CEILING	91.5"	91.5"	91.5"

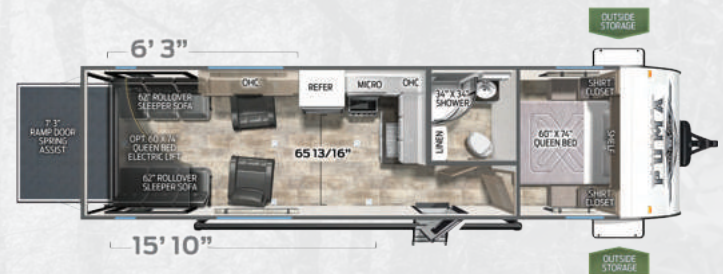
UNLEASHED TRAVEL TRAILER TOY HAULERS



25TH

LENGTH 29' 9" U/VW 6173 HITCH 845 CCC 2700 AWNING 17'

OPT OUTSIDE KITCHEN W/GRIDDLE



27TH

LENGTH 34' 1" U/VW 6738 HITCH 1235 CCC 3257 AWNING 19'



29TH

LENGTH 37' 6" U/VW 7813 HITCH 1440 CCC 3182 AWNING 21'

TOY HAULERS



382THS

LENGTH 39'10" U/VW 10218 HITCH 1900 CCC 3682 AWNING 21'



383DSS

LENGTH 39'10" U/VW 10758 HITCH 1895 CCC 3137 AWNING 21'

UNLEASHED FIFTH WHEEL TOY HAULERS

VALUE SHOPPER PACKAGE (REQ.)

- Electric Awning w/LED Light Strip
- Jack Knife Sofa w/Pull-Down Drink Tray & Storage Underneath
- Roof & Side Mount Solar Prep
- WiFi Prep
- 13,500 BTU Ducted A/C
- 40" LED TV
- Bedspread & Shams
- Bedroom TV Hook-up
- Glass Range Cover
- LED Lighting
- Congoleum® Linoleum w/3-Year Cold Crack Warranty
- AM/FM/Bluetooth® Stereo
- ABS Tub Surround
- TV Antenna w/Booster & Cable Hook-up
- Undermount Sink w/Cover
- Zip Screen
- (2) Power Front Jacks
- (2) Electric Stabilizer Jacks

ADVANTAGE PACKAGE (REQ.)

- 1.3 Cu. Ft. Stainless Steel Microwave
- 21" Stainless Steel Oven & Range Hood
- 12 Gal. Gas/Electric Water Heater
- 11 Cu. Ft. (12V) Black Glass Faced Fridge w/Dual Swing, Scratch Resistant Doors
- Night Roller Shades
- Spare Tire
- Enclosed Darco Wrapped Underbelly
- Folding Grab Handle
- Bath Skylight
- Upgraded Faucet w/Pull Down Sprayer
- Outside Shower
- (2) Outside Speakers

XL EDITION PACKAGE (REQ.)

- 50 Amp Service, Second A/C Prep & Bedroom Roof Vent
- (2) 30lb LP Gas Tanks
- Roof Ladder
- 15,000 BTU Ducted A/C In Living Area
- 30 Gal Fuel Pump Station
- Aluminum Solid Triple Step IPO Std Step
- Black Tank Flush
- 5,100 BTU Electric Fireplace

INTERIOR HEIGHTS FROM FLOOR

HEIGHTS	382THS	383DSS
ONE ELECTRIC BED	84"	84"
TWO ELECTRIC BEDS	75"	75"
HAPPYJACK	84"	84"
ENTRANCE AT DOOR	86"	86"
TO BOTTOM OF A/C	88.5"	88.5"
TO CEILING	91.5"	91.5"



DESTINATION



LENGTH 40' U/VW 10263 HITCH 1365 CCC 1302 AWNING 19'



LENGTH 40'6" U/VW 9979 HITCH 1295 CCC 1521 AWNING 18'



38RLB

LENGTH 42'3" UYW 10429 HITCH 1205 CCC 976 AWNING 19'



DESTINATION

39DBT

LENGTH 42'4" UYW 10162 HITCH 1439 CCC 1838 AWNING 21'



39FKL

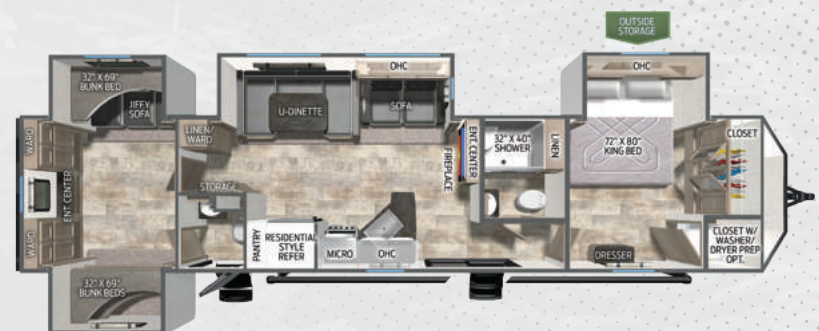
LENGTH 42'7" UYW 10084 HITCH 1515 CCC 1616 AWNING 21'



39PQB

LENGTH 42'9" UYW 10454 HITCH 1425 CCC 1246 AWNING 21'

OPT OUTSIDE KITCHEN W/GRIDDLE





ULTRA LITES

ULTRA LITE PACKAGE (REQ.)

- 13,500 BTU Non-Ducted A/C
- (2) Exterior Speakers
- 30 Amp Converter
- Aluminum Solid Double Step
- AM/FM/Bluetooth® Stereo
- Back-up Camera Prep
- Electric Awning w/LED Light Strip
- Front Diamond Plate
- Outside Shower
- Power Tongue Jack
- Spare Tire & Carrier
- Stainless Steel Range Hood
- Stainless Steel Microwave

ULTRA LEADER PACKAGE (REQ.)

- 6 Gal Gas/Electric DSI Water Heater
- 11 Cu. Ft. (12V) Black Glass Faced Fridge w/ Dual Swing, Scratch Resistant Doors
- ABS Tub Surround
- Bathroom Skylight
- Bedspread w/Shams
- Congoleum® Linoleum w/3-Year Cold Crack Warranty
- Front & Rear Stabilizer Jacks
- LED Lighting
- Night Roller Shades
- Roof & Side Mount Solar Prep
- Super Lube Axle
- Tinted Windows
- TV Antenna w/Booster & Cable Hook-up
- TV Hook-up
- WiFi Prep

TRAVEL TRAILERS

VALUE SHOPPER PACKAGE (REQ.)

- 13,500 BTU Ducted A/C
- ABS Tub Surround
- AM/FM/Bluetooth® Stereo
- Bedroom TV Hook-up
- Bedspread & Shams
- Congoleum® Linoleum w/3-Year Cold Crack Warranty
- Electric Awning w/LED Light Strip
- Glass Range Cover
- Jack Knife Sofa w/Pull-Down Drink Tray & Storage Underneath
- LED Lighting
- Roof & Side Mount Solar Prep
- TV Antenna w/Booster & Cable Hook-up
- Undermount Sink w/Cover
- WiFi Prep

ADVANTAGE PACKAGE (REQ.)

- 1.3 Cu. Ft. Stainless Steel Microwave
- 21" Stainless Steel Oven & Range Hood
- 11 Cu. Ft. (12V) Black Glass Faced Fridge w/ Dual Swing, Scratch Resistant Doors
- 6 Gal. Gas/Electric Water Heater
- (2) Outside Speakers
- Bath Skylight
- Enclosed Darco Wrapped Underbelly
- Folding Grab Handle
- Night Roller Shades
- Outside Shower
- Spare Tire
- Upgraded Faucet w/Pull Down Sprayer

LIMITED EDITION PACKAGE (REQ.)

- 15,000 BTU Ducted A/C IPO 13,500 BTU
- 5,100 BTU Electric Fireplace
- 50 Amp Service, Second A/C Prep & Bedroom Roof Vent
- Aluminum Solid Triple Steps
- Black Tank Flush
- Roof Ladder

FIFTH WHEELS

VALUE SHOPPER PACKAGE (REQ.)

- 13,500 BTU Ducted A/C
- ABS Tub Surround
- AM/FM/Bluetooth® Stereo
- Bedroom TV Hook-up
- Bedspread & Shams
- Congoleum® Linoleum w/3-Year Cold Crack Warranty
- Electric Awning w/LED Light Strip
- Glass Range Cover
- Jack Knife Sofa w/Pull-Down Center Drink Tray & Storage Underneath
- LED Lighting
- Roof & Side Mount Solar Prep
- TV Antenna w/Booster & Cable Hook-up
- Undermount Sink w/Cover
- WiFi Prep
- (2) Power Front Jacks
- (2) Electric Stabilizer Jacks

ADVANTAGE PACKAGE (REQ.)

- 1.3 Cu. Ft. Stainless Steel Microwave
- 21" Stainless Steel Oven & Range Hood
- 11 Cu. Ft. (12V) Black Glass Faced Fridge w/ Dual Swing, Scratch Resistant Doors
- 6 Gal. Gas/Electric Water Heater
- (2) Outside Speakers
- Bath Skylight
- Enclosed Darco Wrapped Underbelly
- Folding Grab Handle
- Night Roller Shades
- Outside Shower
- Spare Tire
- Upgraded Faucet w/Pull Down Sprayer

LIMITED EDITION PACKAGE (REQ.)

- 15,000 BTU Ducted A/C IPO 13,500 BTU
- 5,100 BTU Electric Fireplace
- 50 Amp Service, Second A/C Prep & Bedroom Roof Vent
- Aluminum Solid Triple Steps
- Black Tank Flush
- Roof Ladder

DESTINATION TRAILERS

VALUE SHOPPER PACKAGE (REQ.)

- 1.3 Cu. Ft. Microwave
- 12 Gal Gas/Electric DSI Water Heater
- 13,500 BTU Ducted A/C
- 18 Cu. Ft. Stainless Steel Fridge (w/Ice Maker)
- 24" Stainless Steel Oven w/ Cooktop & Range Hood
- ABS Tub Surround
- AM/FM/Bluetooth® Stereo
- Bedroom TV Hook-up
- Black Tank Flush
- Congoleum® Linoleum w/3-Year Cold Crack Warranty
- Electric Awning w/LED Light Strip
- Folding Grab Handle
- King Bedspread & Shams
- LED Lighting
- Patio Door
- Roof & Side Mount Solar Prep
- TV Antenna w/Booster & Cable Hook-up
- Undermount Sink w/Cover
- Upgraded Kitchen Faucet
- WiFi Prep

MARQUIS EDITION PACKAGE (REQ.)

- 12V Ceiling Fan in Living Room
- 15,000 BTU Ducted A/C IPO 13,500
- (2) Exterior Speakers
- 30 lb Gas Bottles & Cover
- (4) Stabilizer Jacks
- 5,100 BTU Electric Fireplace
- 50 AMP Service (Second A/C Prep)
- Night Roller Shades
- Outside Shower
- Solid Surface Countertop
- Table & Chairs IPO Dinette
- Tri-Fold Sofa IPO Jackknife in Living Room

PUMA

PALOMINO

Puma by Palomino, a Division of Forest River, Inc.
2551 Century Drive | Goshen, IN 46526 | palominorv.com



PRE-DELIVERY INSPECTION FACILITY

20,000 square feet of quality assurance. The bare essentials for a premium product. This state-of-the-art facility gives immediate daily feedback to production for quality assurance in every unit built.

YOUR **PUMA** DEALER



SCAN THE QR CODE WITH YOUR MOBILE DEVICE

VIRTUAL TOURS, PHOTOS, VIDEOS, FOLLOW
PUMA ON SOCIAL MEDIA, AND MORE!



FREE MEMBERSHIP
to Forest River Owners' Group
www.forestriverfrog.com






Learn More
Scan this barcode using
a QR Reader on your
smart phone to learn
more about Forest River.



FOREST RIVER OWNER'S GUIDE
Now you can have your Owner's Manual with you
wherever you are. Download our FREE App from
the App Store or Google Play and you'll have the
information right at your fingertips.



Follow Puma on:   

Specification Definitions


GVWR (Gross Vehicle Weight Rating): is the maximum permissible weight of the unit when fully loaded. It includes all weights, inclusive of all fluids, cargo, optional equipment and accessories. For safety and product performance do NOT exceed the GVWR.

GAWR (Gross Axle Weight Rating): is the maximum permissible weight, including cargo, fluids, optional equipment and accessories that can be safely supported by a combination of all axles.

UVW (Unloaded Vehicle Weight):¹ is the typical weight of the unit as manufactured at the factory. It includes all weight at the unit's axle(s) and tongue or pin and LP Gas. The UVW does not include cargo, fresh potable water, additional optional equipment or dealer installed accessories.

CCC (Cargo Carrying Capacity):¹ is the amount of weight available for fresh potable water, cargo, additional optional equipment and accessories. CCC is equal to GVWR minus UVW. Available CCC should accommodate fresh potable water (8.3 IWW per gallon). Before filling the fresh water tank, empty the black and gray tanks to provide for more cargo capacity.

Each Forest River RV is weighed at the manufacturing facility prior to shipping. A label identifying the unloaded vehicle weight of the actual unit and the cargo carrying capacity is applied to every Forest River RV prior to leaving our facilities. The load capacity of your unit is designated by weight, not by volume, so you cannot necessarily use all available space when loading your unit.

All information contained in this brochure is believed to be accurate at the time of publication. However, during the model year, it may be necessary to make revisions and Forest River, Inc., reserves the right to make all such changes without notice, including prices, colors, materials, equipment and specifications as well as the addition of new models and the discontinuance of models shown in this brochure. Therefore, please consult with your Forest River dealer and confirm the existence of any materials, design or specifications that are material to your purchase decision. © 2023 Puma by Palomino, a Division of Forest River, Inc., a Berkshire Hathaway Company. All Rights Reserved.  01/19 Puma

¹ Estimated Average based on standard build optional equipment