

STARCRAFT

# Befriend the Breeze



***SUPER LITE***  
**MAXX**

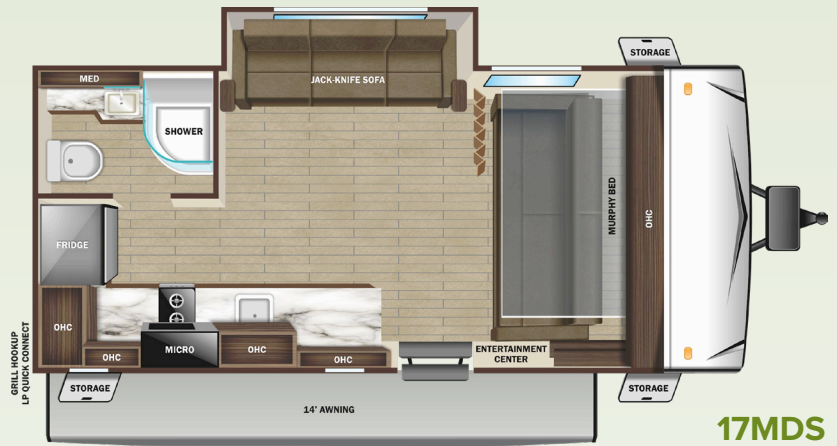
*2024 Travel Trailers*



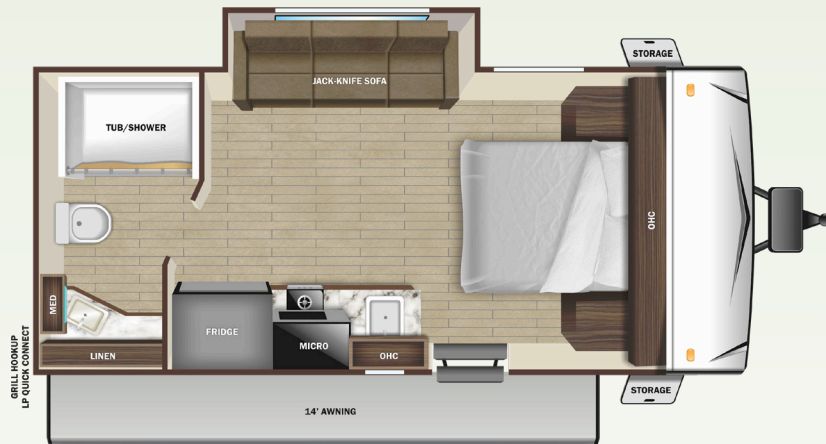
2024 Super Lite Maxx 18RBS



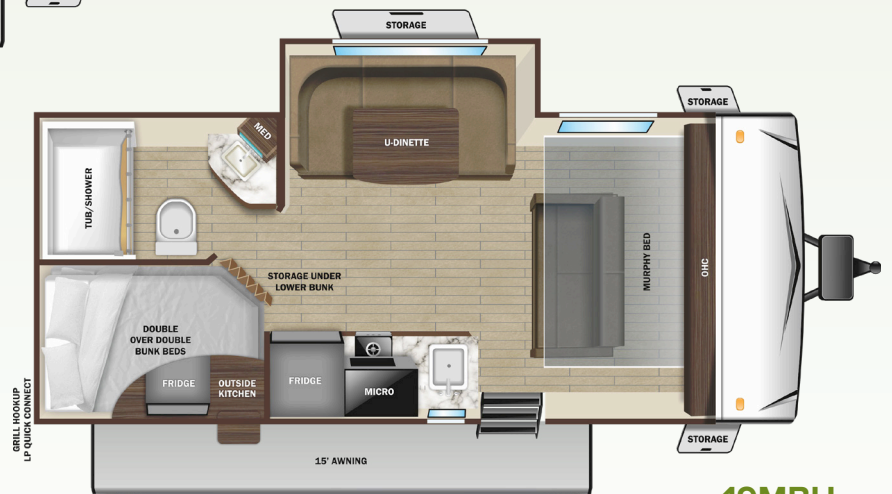
**16FBS**



**17MDS**



**18RBS**



**19MBH**

## STANDARD INTERIOR EQUIPMENT

- 10 cu. ft. 12V refrigerator
- 2-burner recessed range with flush mount glass cover
- 5G antenna
- 75 lb. ball bearing drawer guides
- 80" bed
- 81" interior height
- Bathroom skylight and roof vent
- Cable and satellite prep
- Convection microwave
- Deep bowl kitchen sink
- Electrical outlets and USB ports in master bedroom
- Hardwood cabinet doors
- LED interior lighting
- Range hood
- Residential high-rise faucet
- Residential vinyl flooring
- Roller blackout night shades
- Seamless pressed membrane countertops
- Soft closing foot flush toilet

## STANDARD EXTERIOR EQUIPMENT

- 30 amp service
- Dome style digital TV antenna with Wi-Fi prep
- Exterior grill/griddle quick connect port
- Flexible LP lines

- Fully walkable roof
- Impact resistant galvanized steel wheel wells
- Magnum Roof™ system
- Power awning
- PVC roofing membrane (limited lifetime warranty)
- Rear observation camera prep
- Rear roof access ladder
- Single axle design
- Solid swing-down entry steps
- Tinted safety-glass windows throughout
- TuffShell™ - vacuum bonded laminated construction, reinforced with heavy-duty fiberglass and welded aluminum frames

## CUSTOMER CONVENIENCE PACKAGE (Mandatory)

- 15" nitrogen filled off-road radial tires with aluminum rims
- 13,500 BTU A/C
- 2-20 lb. LP bottles
- 32" 12V LED TV
- Detachable power cord
- Enclosed, insulated underbelly and fully insulated roof
- Gas/electric water heater
- Inverter pre-wire

- JBL® Aura Cube stereo with Bluetooth® and miZONE™ technology
- Power tongue jack
- Rubber torsion axle with increase ground clearance adjustments
- Side camera prep marker lights
- Spare tire
- Stabilizer jacks

## OPTIONS

- Xtend Solar I Package (200 watt solar panel with 30 amp controller) (Mandatory)
- Griddle with bumper bracket
- 110V tank heat pads
- Wi-Fi router



Go the distance with our 3-Year Limited Structural Warranty plus a 1-Year Limited Manufacturer's Warranty—freedom from worry is your best travel companion.

## SPECIFICATIONS

	16FBS	18RBS	19MBH	17MDS
Unloaded Vehicle Weight (lbs.)	3,915	4,070	4,480	4,250
Dry Hitch Weight (lbs.)	425	465	650	410
Gross Vehicle Weight Rating (GVWR)	4,995	4,995	5,500	5,300
Cargo (Gross)	1,080	925	1,020	1,050
Exterior Length	20' 0"	22' 7"	23' 6"	23' 0"
Exterior Height	10' 6"	10' 6"	10' 5"	10' 6"
Exterior Width (Including Wheel Wells)	8' 4"	8' 4"	8' 4"	8' 4"
Exterior Width (Slides Out)	9' 3"	9' 3"	10' 6"	9' 3"
Interior Height	6' 6"	6' 6"	6' 6"	6' 6"
Fresh Water Capacity (gals.)*	61	61	61	61
Gray Waste Water Capacity (gals.)	30	32	30	30
Black Waste Water Capacity (gals.)	30	30	30	30
LP Capacity (lbs.)	40	40	40	40
Tire Size	15"	15"	15"	15"
Awning Size	11'	14'	15'	14'

\*Includes water heater

Learn more about our standard features and full options packages at [StarcraftRV.com](http://StarcraftRV.com)



[StarcraftRV.com](http://StarcraftRV.com)  
#CampingPureAndSimple

### LOCAL DEALER INFO

**STARCRAFT**  
Starcraft RV – Part of the Jayco Family of Companies  
903 S. Main Street  
Middlebury, IN 46540 USA  
(800) 945-4787

Unloaded Vehicle Weight (UJVW): Sometimes referred to as "Dry Weight," UJVW means the typical weight of this trailer as built at the factory. The UJVW, as used in product literature and other promotional materials, does not include cargo, fresh water, propane, options or dealer-installed accessories. Hitch Weight (HW): The hitch weight, as used in product literature and other promotional materials, does not include cargo, fresh water, propane, gas, options or dealer-installed accessories. The addition of these types of items will either add to or subtract from the stated hitch weight. It is important for your safety and enjoyment that your tow vehicle be adequately sized and equipped to tow and handle the GVWR of the RV you select. Review weights and rating of your tow vehicle and consult a competent advisor for questions or advice. Whether you are new to RVing or a veteran, get a feel for the performance of your tow vehicle before heading out on the roadways. When you tow an RV, you must drive differently than when you drive a single vehicle. Practice hooking up, driving, backing up and braking in a safe environment or seek out professional instruction. Starcraft affixes a weight label to each RV which lists weight information for that vehicle. See specifications chart on the respective pages of this brochure.

Starcraft RV | 903 S. Main Street | Middlebury, IN 46540. See dealer for further information and prices. All information in this brochure and on [www.StarcraftRV.com](http://www.StarcraftRV.com) is the latest available at the time of publication approval. Starcraft RV reserves the right to make changes and to discontinue models without notice or obligation. Photography may show optional equipment or props used for decoration purposes only. RVs built for sale in Canada may differ to conform to Canadian codes. Starcraft and the S are registered trademarks of Jayco, Inc. Printed in U.S.A.