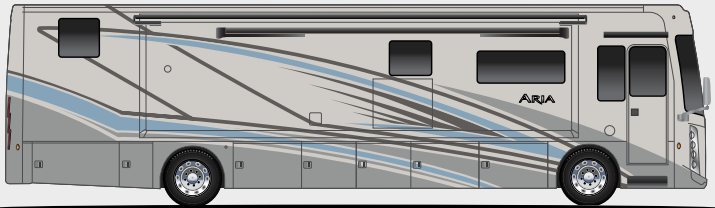


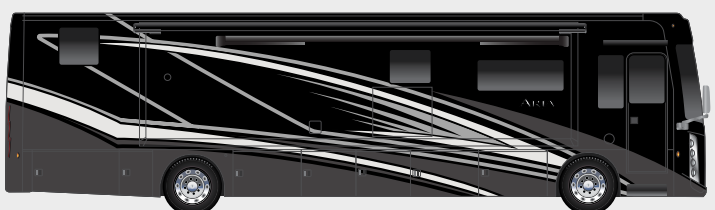
Exteriors and Floor Plans



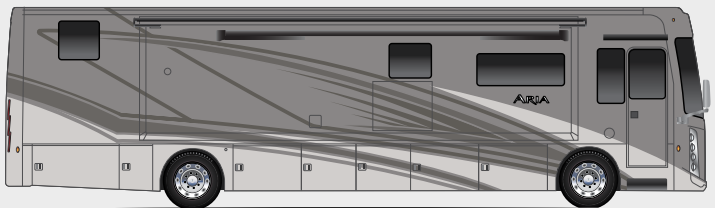
BROAD STREET



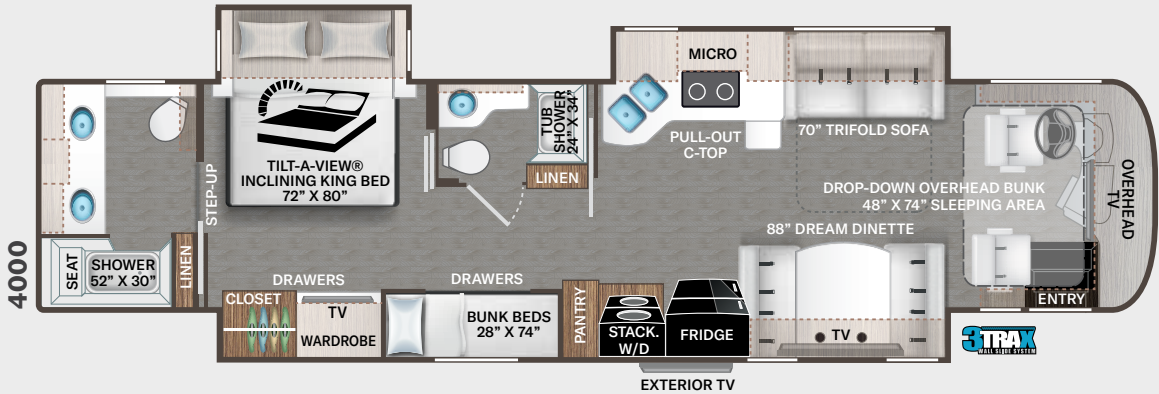
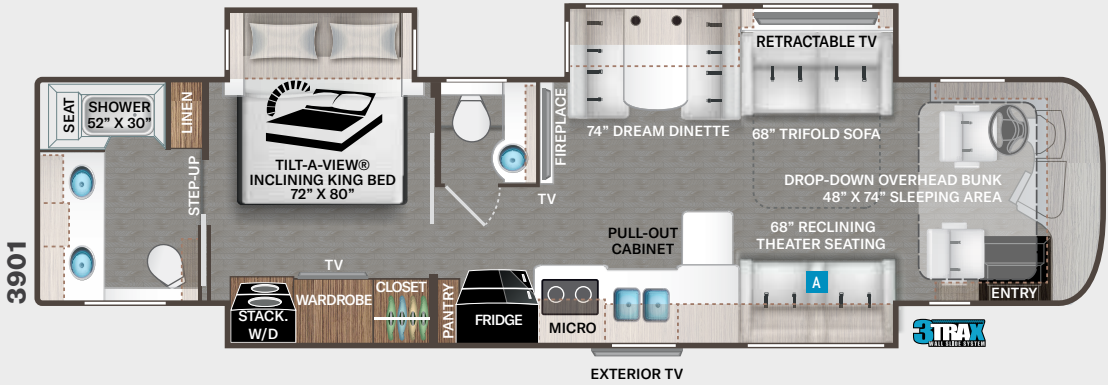
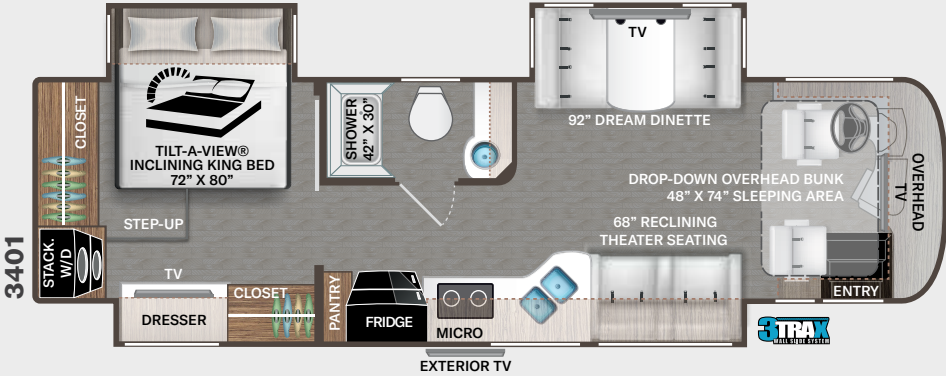
COASTERRA



LATITUDE



SALT ROCK



Interiors

Satin Finish Cabinetry:



Optional - Lifestyle Edition:



Option Available on Select Floor Plans:



OPTIONAL 68" TRIFOLD SOFA



Use your phone's camera to find out more information. Just scan the code!

ARIA®

Featured Highlights

CONSTRUCTION & EXTERIOR

- Freightliner® XC-R Raised Rail Chassis with Atlas Foundation™
- Cummins® ISB-XT 6.7L Engine with 360HP & 800 lb.-ft. Torque
- 6-Speed Allison MH-3000 Automatic Transmission
- Air-Ride™ Suspension
- I-Beam Front Axle with 55° Wheel Cut
- Exhaust Brake
- Sachs® Shock Absorbers
- 100-gallon Fuel Tank with Dual Fills
- In-Block Engine Heater
- One-Piece Fiberglass Front & Rear Caps
- Invisible Front Paint Protection
- One-Piece Windshield
- Full-Body Paint Packages with Gel-Coat Sidewalls
- Automatic Leveling Jacks with Touchpad Controls
- Side-Hinged Locking Compartment Doors
- Basement Pass-Through Storage
- Easy Slide Storage Tray
- Power Entry Door & Patio Lateral Arm Awnings with Integrated LED Lighting
- Slideout Room Topper Awnings
- Patio Light (Both Sides)
- Roof Ladder
- Frameless Dual Pane Windows
- 10,000-lb. Trailer Hitch with 7-pin Round Connector

AUTOMOTIVE & COCKPIT

- 10.1" Touchscreen Dash Radio with Bluetooth®, Apple CarPlay®/Android Auto® & Sirius/XM® Radio
- Chrome Heated/Power Mirrors with Integrated Side View Cameras
- Blind Spot Detection

- Leatherette Reclining/Swivel, Power Adjustable Captain’s Chairs with Lumbar Support (Passenger Seat has Electric Footrest)
- Remote Entry Door Lock
- Thor Insignia Puddle Light at Entry Door
- Driver & Passenger Overhead Storage Cabinetry
- Cruise Control
- Emergency Engine Start Switch
- Map Lights
- Dash Fans
- Air Horns
- Fog Lights
- Power Solar & Privacy Shades on Windshield
- Manual Solar & Privacy Shades on Side Windows
- Electric Step Cover
- 275/80R 22.5" Radial Tires with Aluminum Wheels
- Power Drop-Down Hide-Away Overhead Bunk with Cotton Cloud™ Mattress

INTERIOR

- Porcelain Floor Tile Throughout
- Ceiling Ducted Whisper Air™ Central Cooling System
- Decorative Ceiling Treatment with Mood Lighting
- LED Lighting
- Satin Finish Cabinetry with Rake Style Doors and Nickel Finish Hardware
- Full Extension Metal Ball Bearing, Soft-closing Drawer Guides
- Window Privacy Roller Shades
- P/S Leatherette Sofa Bed (3901)
- Leatherette Power Reclining Theater Seating with Footrests, USB Charging Ports & Cup Holders (3401 & 3901)

- Leatherette Dream Dinette® Booth with Wireless Charger on Table Top & Dual Child Safety Tethers
- Electric Fireplace with Remote Control (3901)

INTERIOR OPTION

- Lifestyle Edition Two-Tone Cabinetry with Bristol Style Doors & Chrome Finish Hardware
- Leatherette Sofa Bed (3901)

KITCHEN

- Residential Refrigerator
- Electric Induction Cooktop
- Designer Tile Backsplash
- Stainless Steel Over-the-Range Convection Microwave Oven
- Solid Surface Countertops
- Pop-Up Outlets in Kitchen Countertop
- Large Double Bowl Stainless Steel Sink with Single Handle Faucet & Pull-Down Sprayer
- Solid Surface Sink Covers
- 12-volt Attic Fan with Cover

BEDROOM & BATHROOM

- King Size Bed with Tilt-A-View® Inclining Bed Mechanism
- Bedspread with Throw Pillows
- USB Charging Ports in Bed Base
- Foot Flush Porcelain Toilet
- Macerator Toilet (3901 & 4000)
- Oversized Fiberglass Full Height Shower with Glass Door
- Oxygenics® Shower Head
- Skylight in Shower
- Second Fiberglass Full Height Shower and Tub with Glass Door (4000)
- 12-volt Attic Fan w/Cover in Bathroom

ENTERTAINMENT

- 55" LED Smart TV in Living Area (3901)
- 50" LED Smart TV in Living Area (3401 & 4000)
- 43" LED Smart TV in Living Area (3901)
- 32" LED Smart TV in Cockpit Overhead (3401 & 4000)
- 32" LED Smart TV in Bedroom
- JBL® Sound Bar with Bluetooth®
- Exterior 40" TV on Swivel Bracket with Sound Bar with Bluetooth®
- Tablet Holder and USB Charge Ports in Bunk Beds (4000)
- Cable TV & HDMI Video Distribution
- Satellite Mounting Backer in Roof
- Winegard® Connect™ 2.0 WiFi / 4G / TV Antenna

ELECTRICAL & PLUMBING

- Onan® RV QD 8000 Diesel Generator
- Automatic Generator Start
- Automatic Transfer Switch with Power Protection
- 50-amp Shoreline Power Cord
- 12-volt Electric Power Cord Reel
- Aqua-Hot® 250D Hydronic Furnace & Water
- 2000-watt Pure Sine Inverter /100-amp Converter
- Dual Roof Air Conditioners with Heat Pump in Front Living Area
- Energy Management System
- Four (4) Auxiliary House Batteries
- Battery Disconnect Switch
- Rapid Camp+® Multiplex Wiring Control System with 7" Screen, WiFi-App-Enabled & SurgeGuard® Electrical Protection
- 100-watt Solar Charging System controlled via Multiplex Panel
- Exterior GFCI Recept

- Enclosed & Heated Holding Tanks
- E-Z Flow Water Panel with Whole-House Water Filtration
- Black Tank Flush System
- 360° Siphon® Holding Tank Vent Cap
- Outside Shower
- Stackable Washer & Dryer
- Exterior LP Connection

ELECTRICAL & PLUMBING OPTIONS

- Third Roof Air Conditioner (3901 & 4000)



P.O. Box 1486, Elkhart, IN 46515
Sales Department: 800.860.5658



Use your phone’s camera to find out more information.
Just scan the code!

Specifications

	3401	3901	4000
Chassis	Freightliner XC-R	Freightliner XC-R	Freightliner XC-R
Gross Vehicle (GVWR)	32,400	35,320	35,320
Gross Combined (GCWR)	42,400	45,320	45,320
Wheel Base	208"	270"	284"
Exterior Length (w/o ladder)	34'-9"	39'-11"	41'-1"
Exterior Height (w/AC)	12'-6"	12'-6"	12'-6"
Exterior Width (w/o mirrors)	101"	101"	101"
Interior Height (living area)	84"	84"	84"
Awning Size	20'	20'	20'
Fuel (gal)	100	100	100
LPG (lbs)	105	105	105
Fresh/Waste/Gray Water (gal)	91 / 51 / 51	91 / 51 / 51	91 / 51 / 70
Water Heater (gal)	Tankless	Tankless	Tankless
Furnace (BTUs)	40,000	40,000	40,000 (2 - 20,000)
Exterior Storage Capacity (cu. ft.)	125	215	240
Hitch Weight Rating (lbs)	10,000	10,000	10,000

For a complete listing of specifications and available features, visit: thormotorcoach.com/aria

IMPORTANT–PLEASE READ: This brochure reflects product design, fabrication, material, components and specifications at the date of printing, which date is disclosed below. Please visit us online at ThorMotorCoach.com or consult with your selling dealership for the latest in standards, options, specification and technical information. Photographs in the brochure may depict optional equipment or may only be available in certain floor plans. Components, appliances and the chassis may have been manufactured in a calendar year before the vehicle's designated model year. All capacities are approximate. The actual length of the vehicle may differ from that indicated in the brochure due to variances in the manufacturing processes and/or installed components. All dry weights are based on standard model features and do not include optional features or equipment. Component part and appliance manufacturers issue limited warranties covering portions of the vehicle not covered under the limited warranty we issue.
Copyright Thor Motor Coach, Inc. © OH 09/13/2023

