

# Destination freedom.

Mobile Suites

2023



*DSRV*  
Luxury Suites



## Mobile Suites

36 RSSB3



## Luxury from the word go.

Since 2003, DRV Luxury Suites have been the fifth wheels you long for, aspire to, and put at the top of your "someday" list. How do we do it? We begin by listening to you, our customers. Then we go to extreme lengths to give you everything you want in a high-end fifth wheel or luxury asset hauler — uncompromising quality, residential construction, luxurious appointments, no-excuses customer service, and the kind of four-season comfort that makes full-timing the time of your life.

When you choose DRV, you're not just buying another luxury fifth wheel. You're moving up to a true home on the road — one that will keep you safe, protected and worry-free, no matter where the next adventure leads. Now that you're ready to relax and enjoy life, choose the luxury coach that cries freedom every step of the way.







## Destination anywhere.

The Mobile Suites is the foundation of DRV. It offers the comforts of home, including the conveniences of a residential kitchen, a master suite complete with a king sized bed and large bathroom, full washer and dryer connections in every floor plan, and the peace of mind that comes from knowing you've chosen the best construction available.







41 RKDB - Italian White Cabinets  
with Symphony Décor  
and Granite Furniture

## A home that feels like you.

You expect the ultimate in form, function, and design. By listening to our customers support and feedback we have taken our Mobile Suites to a new level.

The 41 RKDB was designed on customer feedback. This floor plan features a large rear kitchen, conversational lounge seating for 6, large entertainment center, and a full half bath, keeping the master suite private when guests visit.







## Mobile Suites

41 RKDB



*With DRV... you can have more.*

Every model features a 20 cubic foot residential refrigerator, residential style gas oven, stainless steel dishwasher, convection microwave, soft-close drawers and doors, hand laid luxury vinyl plank flooring throughout the main floor and upper deck, and a custom tile backsplash on solid surface countertops.

You will find king beds standard in all floor plans. The bedrooms also feature full underbed storage, which is perfect for our full-timers as they travel into different weather seasons. All master retreats provide nightstands, over the bed storage, and independently controlled reading lights on each side of the bed.







40 KSSB4 - Italian White Cabinets with Symphony Décor, Truffle Furniture and Optional Bar Configuration

## Room to live.

The 40 KSSB4 showcases a gourmet kitchen with upgraded amenities that include a stainless steel residential refrigerator with matching convection oven, microwave oven, and residential style gas oven. This floor plan boasts two large pantry cabinets, and a sink free island, keeping function and space at the fore front without compromising beauty.

Engineered for dependability and lasting beauty, your Mobile Suite will be every bit as sophisticated as you are. Loaded with all the amenities of your home our industry envied 15" box tube frame means your new home on wheels is built strong to protect your investment and personal belongings.

The structural foundation isn't the only detail we focus on. The 3 1/4" thick insulated sidewalls protect you from whatever climate you travel to. Giving you peace of mind and true freedom knowing the details are covered.







## Mobile Suites

40 KSSB4

The 40 KSSB4 checks all the boxes. Featuring a large residential kitchen, full dining, and entertaining space, and large master suite all for 41'.

Every Mobile Suite living room is completed with a 55" smart TV, fireplace, day/night roller shades, accent lighting, and residential furniture.

This floor plan also features a grand staircase that leads to the master bedroom, bathroom, linen cabinet, and large washer/dryer closet. The dedicated laundry area allows for multipurpose storage and workspace should a washer and dryer not be needed.

Never compromise on amenities even when a shorter floor plan is desired. Travel to all your destinations easier.





Arctic Mist

Elite Package Full Body Paint (Option)



Capetown Veil

Elite Package Full Body Paint (Option)



Cobblestone Cove

Partial Body Paint (Standard)



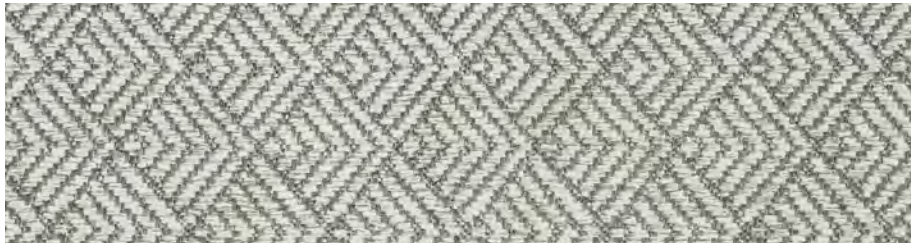
Denali Ridge

Partial Body Paint (Standard)

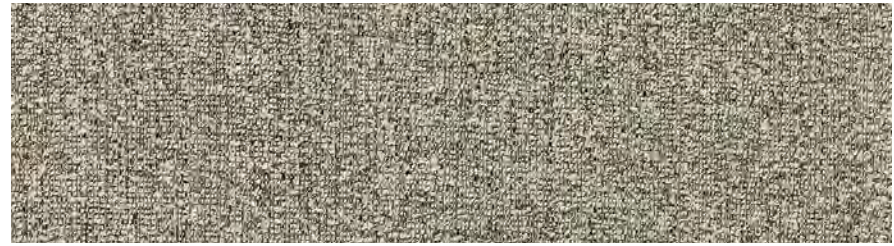


Havana Moon

Partial Body Paint (Standard)



Symphony Sofa Pillows



Symphony Dinette Chairs



Chai Hickory Cabinets



Columbian Maple Cabinets



Italian White Cabinets



Aurora Cream Countertops



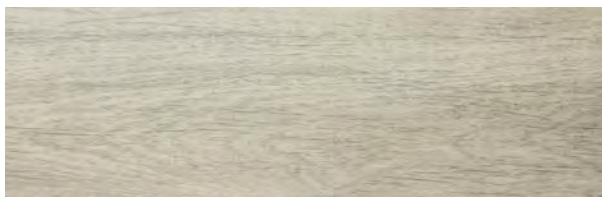
Granite Sofas



Luna Sofas



Truffle Sofas



Nestle Flooring



Shade Flooring



Virtual Gloss Carpet

## The foundation of true freedom.

---

If there's one thing we've learned after all these years on the road, it's this: People choose DRV Luxury Suites because they're ready to *enjoy* life. They don't want to spend their time worrying about things like quality, construction and service. Which is why we put so much thought into them in the first place. Every DRV product is built to *last* — with our unique triple-stacked box tube frame, the thickest sidewalls in the industry, screwed and glued aluminum framing for unshakable stability, and dozens of no-excuses features that'll keep you safe, comfortable and worry-free, even when Mother Nature's at her worst.

### Structure

---

**Custom engineered and tested 15" triple steel box tube chassis.** Super strong foundation to build a lasting, high quality fifth wheel.

**All-weather heavy duty aluminum floor system.** The floor is screwed and bolted together and will not rot over time. We also refuse to use staples which eventually work up through the floor covering.

**R-29 insulated frame floor system with three weather barriers.** Warm floors for extended or full-time use; keep out condensation.

### Technology

---

**Sstate-of-the-art Level-Up™ leveling system and industrial hydraulic system.** Level your coach with the push of a button.

**Automotive style Kodiak® disc brakes.** Limited lifetime warranty; smoother stopping; shorter stopping distance; low maintenance cost.

**Heavy duty H-rated 17.5" tires and aluminum eight-bolt wheels.** Heavier load capacity. Special tread pattern to dissipate heat. Tires are regroovable for miles and miles of safe use. Wheels are lightweight and will not rust.

**SeeLevel tank monitoring system.** Uses sonar to provide instant and accurate readings of all tanks.

At DRV Luxury Suites, we build each fifth wheel the same way we'd build our own home. And we appoint it with the finest luxury features available — lush homelike furnishings, cedar-lined closets and fireplaces, large French door refrigerators, stainless steel appliances, top-of-the-line electronics and more. Then we back it up with the best quality control and customer service in the industry. Every single coach is tested before it ever leaves the factory. And, if you should someday have a problem, rest assured, we'll get it fixed. No matter where you are. Day or night.

### Livability

---

**Screwed and glued construction.** Solid; 16" o.c. stud spacing.

**3.25" aluminum framed walls with R-16 insulated rating.** Exclusive foam core vapor barrier. Lightweight; lower heating and cooling cost; noise reduction; eliminates chance of condensation.

**Radiused aluminum roof rafters on 16" centers.** More space; more insulation; improved water run-off; maximum load capacity per square foot.

**R-25 insulated roof system with plywood and rubber or fiberglass covering.** Improved weather barrier; sound deadening; low maintenance; lower heating and cooling costs.

**Soft touch interior ceiling.** Sound proofing; easy to clean; extra insulation.

### Refinements

---

**Conveniently located wall switches control all lighting.** Fingertip control of all task and decorative lighting.

**Overhead LED room lighting on dimmer switches.** Personal light control.

**Designer raised panel cabinet doors and soft-close drawers and doors.** Optimal storage; residential look; residential function.

NOTE: Some features shown are exclusive to specific makes and models. Please review the complete Standards and Options list for availability.





**Roof Construction**

**Residential Roof R25**

**Wall Construction**

**Residential Sidewall R16**

**Floor Construction**

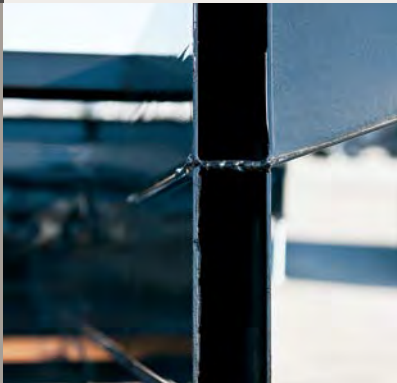
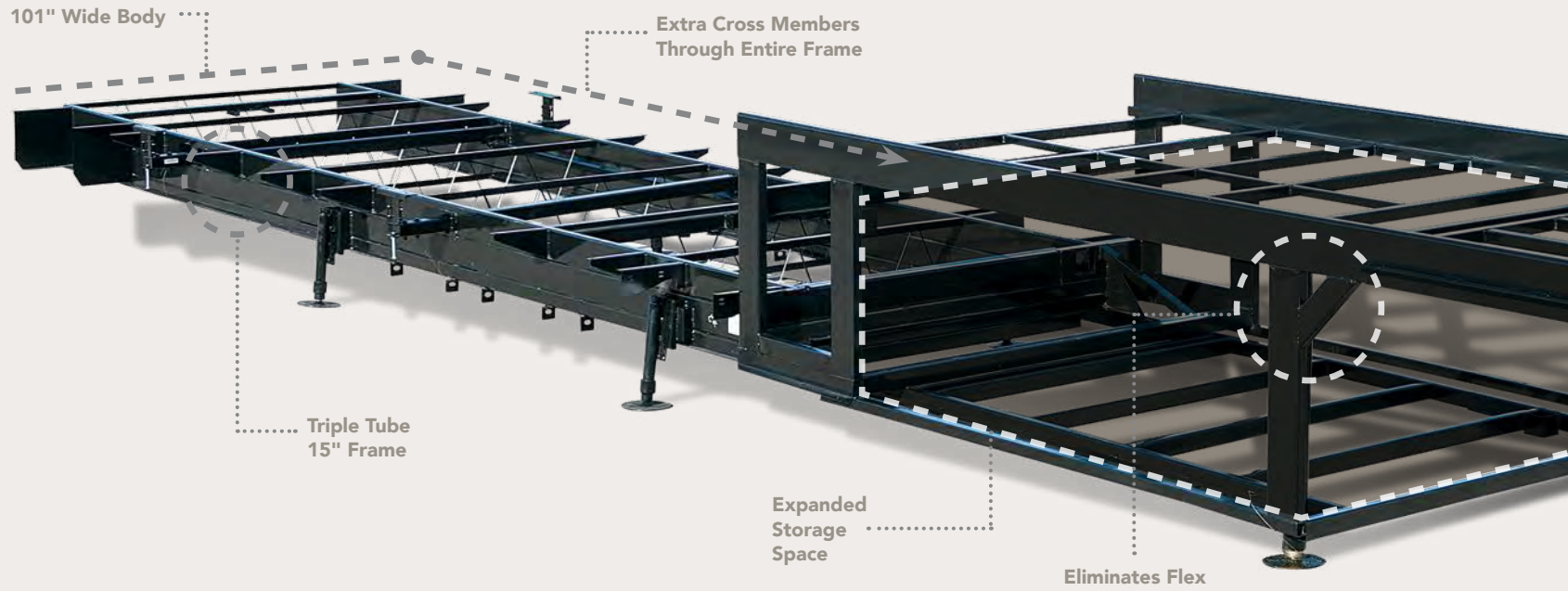
**Residential Floor R29**

**All Season Thermal Pack with High Density Insulation**

Standard on all Suites

**Reliability**

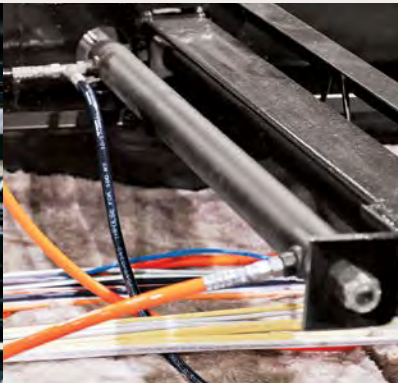
- High pressure hydraulic lines with metal fittings
- Individual push-button slide room controls
- Industrial stabilizer jacks located and wind tested to provide maximum stability
- Heavy gauge UL copper wiring
- Residential copper water manifold
- Reliable LED lights
- Convenient lights at all exterior service locations
- Gel coat fiberglass walls and exterior doors
- Plywood roof decking
- Extra sound proofing in floor, walls and roof
- Ultra quiet ducted lo-pro A/Cs
- Automotive disc brakes
- Furnace return air replaceable filter
- Oversized basement storage doors with gas lift cylinders
- Custom painted exterior graphics
- Tough-skin, specially coated rock guard



Stacked triple-tube steel frame for 15" of maximum strength; the largest foundation on any fifth wheel in the industry.



Pinless hydraulic jacks are mounted at a 5-degree angle for maximum stability.



Commercial hydraulic rack & pinion slide-outs. All gear boxes are located inside the frame for the ultimate weather protection.



Residentially hung sidewalls are carriage-bolted into the floor for solid construction and superior strength.



R-16 residential insulation completely surrounds all of our walls and slides. Best insulation in the industry and eco-friendly!



## Solid Box Steel Frame

The foundation is the most important part of your home. It needs to be strong, reliable and able to last the test of time. DRV's custom-engineered 15" triple box tube frame measures 101" wide – the largest, most rigid fifth wheel frame in the industry. This design eliminates flex around the pin box and allows us to frame even the upper deck with steel to open up the storage compartment, providing you with space to fit all your personal belongings.

## DRV 6-Jack Level-Up System

Designed by DRV, our 6-jack level-up system provides quick and easy leveling and the strength to stabilize the coach when set up.



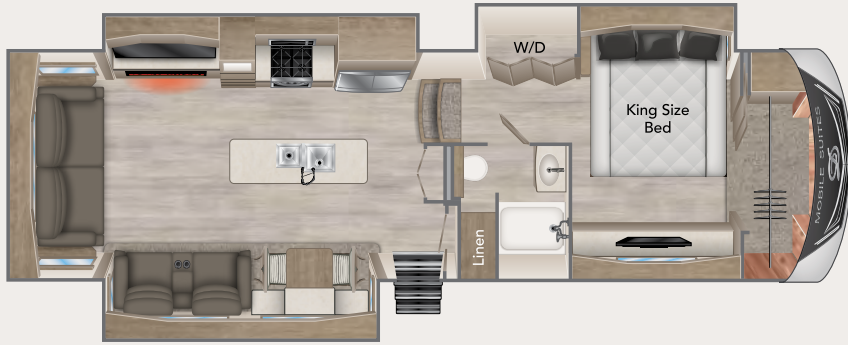
Our 3 1/4" walls are the thickest in the industry, giving you maximum insulation from noise and weather. The exclusive foam core vapor barrier eliminates condensation.

MORryde® I.S. Suspension eliminates the axle and leaf springs, allowing each tire to work independently. With 5 1/2" of travel per assembly, MORryde® I.S. will absorb road shock and protect your home for its lifetime.

Commercial E-Z Lube® hubs surrounded by 8 large 5/8" stud bolts and standard automotive disc brakes round out the safety features of every DRV unit.

Heavy-duty 17.5" tires provide increased load capacity while staying cool on long hauls. We use truck tires, not RV tires, to ensure better performance and peace of mind.

A copper water manifold comes standard, ensuring equal water pressure throughout your home. And each water line is clearly labeled and has its own shut-off valve, allowing you to isolate a single line without shutting off water to the rest of your home.



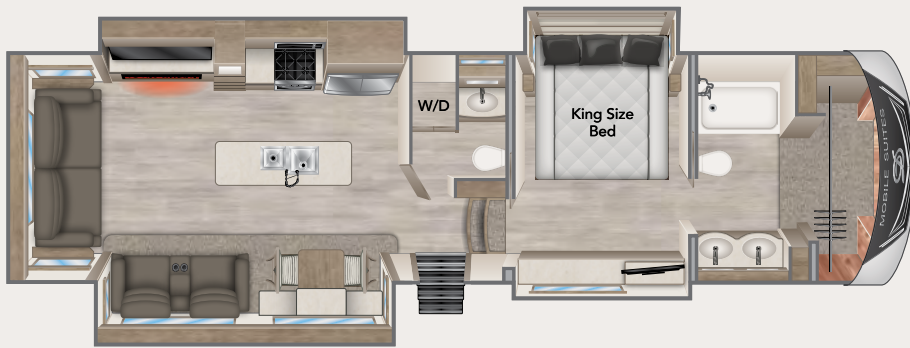
36 RSSB3

Length 38' 7" | Est. Dry Weight 16,600 Lbs.



41 FKMB

Length 43' 1" | Est. Dry 18,700



39 DBRS3

Length 41' 6" | Est. Dry 17,360



41 RKDB

Length 43' 1" | Est. Dry 18,220



40 KSSB4

Length 42' 3" | Est. Dry 18,300



43 MANHATTAN

Length 44' 11" | Est. Dry 20,000

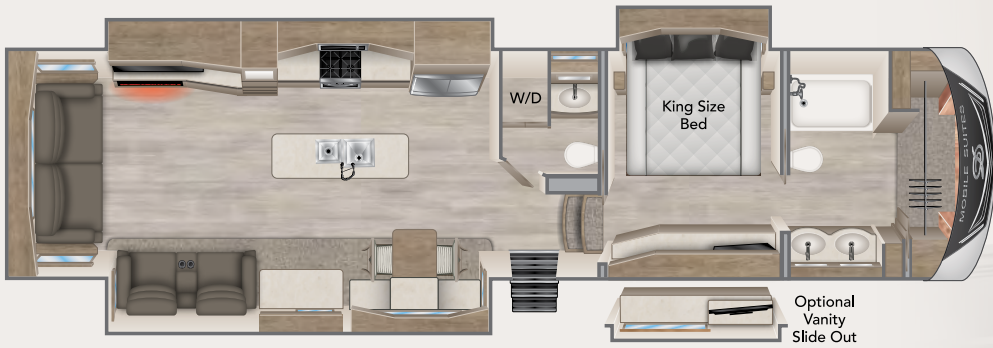
**ALL MODELS FEATURE** *Note: All lengths are measured from the pin box to the rear cap. All dry weights are estimates depending on options. For GVWR please visit our website.*

• Fresh Tank - 100 gal.

• Gray Tank - 75 gal.

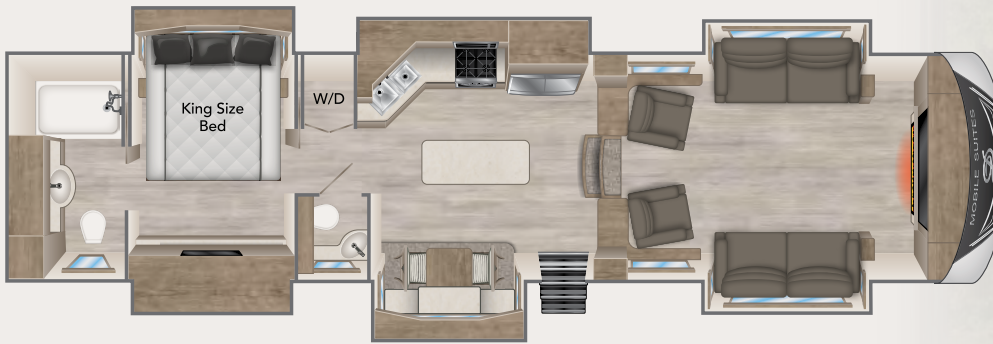
• Black Tank - 50 gal.

• SeeLevel Tank Monitor



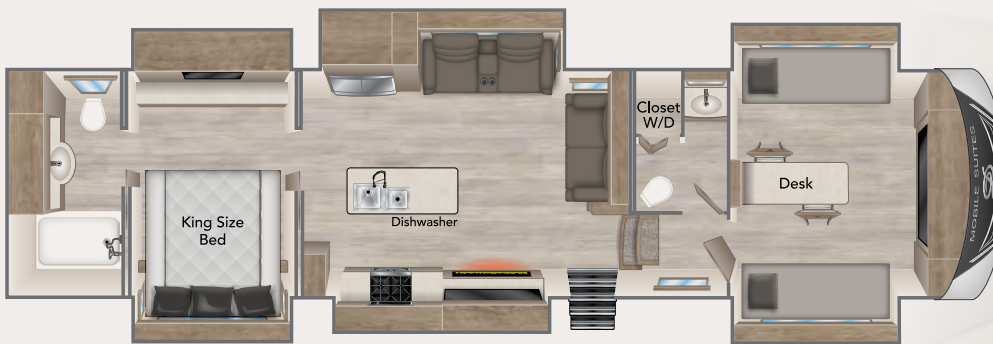
44 HOUSTON

Length 46' 0" | Est. Dry 20,300



44 NASHVILLE

Length 46' 0" | Est. Dry 19,800



44 ORLANDO



Length 46' 0" | Est. Dry 20,860



## Standards

**Frame/Running Gear:**

- 17 1/2" H-Rated Re-Groovable Tires
- Heavy Duty Grease Bolt Shackles w/Bronze Bushing
- Kodiak® Automotive Disc Brakes
- Heavy Duty Axles
- Commercial Grade E-Z Lube® Hubs
- 15" Triple Stacked Box Tube Frame
- 101" Wide Body
- Industrial Hydraulic System for Jacks & Lower Level Slides
- Electric Bedroom Slide
- Slide Outs w/Select Push Button Controls
- Pinless Hydraulic Front Landing Jacks at 5 Degree Outboard Angle

**Construction: Floor**

- 3" Thick Floor
- 14" O.C. Floor Aluminum Floor Joists
- Screwed & Glued Joist Construction
- 5/8" Tongue & Groove Plywood Flooring
- Residential Perimeter Heating
- Residential Rated R29 Insulation

**Construction: Walls/Slides**

- 3 1/4" Thick Walls/Slides
- 16" O.C. Stud Spacing
- Screwed & Glued Aluminum Stud Construction
- 1/4" Monsanto® Fome-Cor Vapor Barrier (Eliminates Condensation)
- 1/4" Thick Gelcoat Azdel Fiberglass w/Wood Backer
- Residential Rated R16 Insulation

**Construction: Roof**

- 16" O.C. Rafter Spacing
- Residential Rated R25 Insulation
- 1/2" Plywood Roof Overlayment
- Seamless, 1-Piece Rubber Roof
- Soft-Touch Vinyl Ceiling, Including Interior Slide-Out Ceilings

**Exterior:**

- Straight Roof Line w/8' Tall Interior Slide Out Height
- High Density Insulation
- Custom Painted Exterior w/Clear Coat
- Gelcoat Fiberglass Molded Caps
- Frameless Tinted Safety Glass Windows

- Exterior Security Lights
- Commercial LED Exterior Clearance Lights
- Amber LED Front Cap Turn Signal
- LED Docking Lights
- 78" Entry Door
- Metal Slam Door Compartment Latches
- Extra Thick Compartment Doors w/Gas Struts
- Motion Sensor LED Light Switches for Basement
- Washable Storage Compartment Liner
- Custom Enlarged Control Center w/LED Lighting
- Lend-a-Hand Exterior Grab Handle
- Power Awning w/LED Lights & Aluminum Weather Shield
- Water Pump Switch at Outside Hookup Center

**Systems/Tanks:**

- 50 Amp Service w/Detachable Cord
- 80 Amp 12 VDC Converter
- 100 Gal. Fresh Water Tank
- 75 Gal. Grey Water Tank w/Power Flush
- 50 Gal. Black Water Tank w/Power Flush
- SeeLevel Tank Monitoring System on All Tanks

- Residential Type 1/2" PEX Water Lines
- Exclusive Copper Water Manifold w/Individual Shut-Off Valves
- Whole House Water Filtration System
- Multi-Switch Water Bypass System
- Slide Out Propane Tray w/Dual 40 Lb. Tanks
- 12 VDC Battery on Pull Out Tray
- On Demand Water Heater
- 40,000 BTU Furnace w/Custom Plenum
- Residential 5 Duct Heating System w/6" Ducting
- Forced Heat Ducting to Tanks/ Water System
- Fully Ducted A/C System w/ Cold Air Return
- 15,000 BTU Low-Profile Main A/C
- Wired & Ducted Bedroom A/C w/Cold Air Return
- Third A/C Prep (All Tandem Axles)
- Triple 15,000 BTU Low-Profile A/Cs (All 43/44' Models)
- Solar Prep
- HD Roof Satellite Prep for Dual DVR Receivers
- HD Ground Satellite & Cable Prep

**Interior: Luxury Living Room/Dinette**

- 55" Smart TV with JBL Soundbar
- Hand Laid Vinyl Plank Tile
- Residential Rebond Carpet Pad
- Plush Residential High Durability Carpet
- Chai Hickory/ Columbian Maple/ Italian White Solid Hardwood Cabinetry
- Solid Hardwood Fascia Trim Around Slide Outs w/LED Lights
- Solid Hardwood Cabinet Stiles (Pocket Drilled/ Screwed)
- Concealed Soft-Close Cabinet Door Hinges
- Raised Panel Cabinetry
- Soft-Close Full Extension Metal Drawer Guides
- LED Interior Ceiling Lighting on Dimmer Switches
- Decorative Wall Clock (Most Models)
- Utility Closet w/Coat Storage & Centralized Control Station (Most Models)
- Interior Ceiling Fan (Most Models)
- Decorative 12V Light Scones

## Options

- Custom Hardwood Dinette Buffet w/Solid Surface Top
- Hidden Storage Behind TV (Side Entertainment Models)
- Dinette Table w/Hidden Leaf Extension
- (2) Hardwood Dinette Chairs w/ Fabric Accent
- Crown Molding Throughout
- HD Wiring Throughout
- Residential Sofa w/Tri-Fold Bed (Most Models)
- Residential Theatre Seating w/Center Console (Side Entertainment Models)
- Residential Recliners (Rear & Front Entertainment Models)

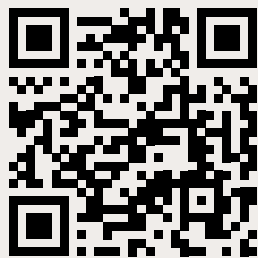
### Interior: Gourmet Kitchen

- 20 Cu. Ft. Residential Stainless Steel French Door Refrigerator
- Stainless Steel Convection/ Microwave
- Stainless Steel Residential Style Gas Oven
- Stainless Steel Residential Dishwasher
- Pull-Out 13 Gal. Garbage Can (Most Models)
- Deep Double Bowl Apron Front Stainless Steel Sink w/Sink Covers
- Residential Kitchen Faucet
- Custom Hand Laid Tile Backsplash
- High Polished Solid Surface Countertops

- Custom Appliance Garage w/Pull-Out Tray (Most Models)
- Custom Over the Island Accent Light
- Lighted Pantries & Kitchen/ Bathroom Toe Kicks

### Interior: Master Bath/ Hallway

- Hardwood Steps with Woven Inlay
- Hand Laid Vinyl Plank in Hallway/Bathroom
- No Carpet in Hallway
- Washer/Dryer Prep
- Heat & A/C Ducting in Bathroom
- Powered Fan in Bathroom (Exhaust Only)
- Sky-Light Over Shower w/LED Pot Light
- Porcelain Toilet w/Water Saver Spray
- One Piece Fiberglass Shower



SCAN TO WATCH  
THE MOBILE SUITES  
BRAND VIDEO

### Cabinetry (Standards):

- Chai Hickory
- Columbian Maple
- Italian White

### Décor (Standards):

- Symphony

### Flooring (Standards):

- Nestle Flooring
- Shade Flooring
- Virtual Gloss Carpet

### Counters (Standards):

- Aurora Cream

### Entertainment:

- 60" LED Smart HDTV (Rear Entertainment Models Only)
- 32" LED HDTV Outdoor Entertainment
- Winegard® Trav'ler HD Auto Satellite
- Winegard 360 Plus

### Bedroom:

- Built in Front Wardrobe Safe w/ Keyless Entry
- Queen Bed Suite
- Sleep Number® Bed by Select Comfort

### Dinette:

- Chai Hickory Folding Chair
- Columbian Maple Folding Chair
- Chai Hickory Dinette
- Columbian Maple Dinette
- Solid Surface Bartop w/Storage

### Systems/Vents/Fans:

- 15 BTU Ducted Lo/Pro AC – Bedroom
- Heat Pump
- Power Ventilator w/Switch Control – Bedroom
- Splendide® Front Load 2 Piece
- Splendide® XC 2,100 Combo
- Generator Prep
- Onan® 5,500 Marquis Gold Generator w/Prep
- 3,000 Watt Inverter w/Four 6V Batteries
- Surge Protector w/Voltage Protection & Remote Display
- Heat Pads on All Tanks w/Elbow Heater on Drain Pipe

### Construction/ Running Gear:

- Power Cord Reel
- HBA Brake Cam (To be Ordered Special for Customers w/GM Trucks)
- MORryde® Step Above

### Exterior/Awnings:

- Slide Toppers
- Power Dinette Slide Patio Awning w/Weathershield
- Slide Out Storage Tray (36" x 90")
- Voyager 270 Camera System
- RVIA
- CSA

### Partial Body Paint (Standards):

- Denali Ridge
- Havana Moon
- Cobblestone Cove

### Elite Package:

- One Piece Fiberglass Roof (N/A on Full House)
- Custom Molded One Piece Fiberglass Fender Skirts
- Custom Full Body Paint Scheme w/Window Silks and Striping on Slide End Walls
- High Polished Quartz Countertops
- Power MCD Roller Shades
- ASA In-Command System
- Dyson Vacuum Cleaner
- Lit Hardwood Valances
- Arctic Mist Exterior
- Capetown Veil Exterior
- Winegard HALO System

*This brochure is based upon the latest product information available at the time of printing. DRV reserves the right to make changes at any time to prices, colors, materials, equipment, specifications and models, and to discontinue models without notice or obligation. Color representations are as close as photographic/print reproduction will allow. All specifications are approximate and dimensions nominal. Text and/or photos may represent equipment or décor items which may not be included as a standard item in your model of choice.*

## NEW TECHNOLOGY

# RV Halo™ Voice

BY WINEGARD™

## AI Enabled Online & Offline Voice Assistant

Simplified, scalable and streamlined.  
Always-on & connected for the ultimate user experience.

**The RV Halo Voice integrates with existing control and multiplexing systems.**

*Models available with and without camera.*



*Access almost every facet of your living space with the user-friendly RV Halo Voice.*

### CONTROL

- Devices
- Lighting (on/off/dim)
- Slide outs
- Awnings
- Jacks

### CHECK

- Tank levels
- Battery voltage
- Internet status
- Direct Spark Ignition monitoring

### FEATURES

- Online Voice Control
- Security Camera
- Leveling System
- Temperature
- Offline Edge Voice control
- RV-C Interface
- A/V Control
- Integrates with complete RV Halo lineup including RV Halo App
- Motion Safety Switch ensures safe operation of slide-outs



## COMMAND EXAMPLES

Voice commands are customizable for your coach options. Integrates with **Amazon Alexa** commands.

"OK RV..."

"set up camp"

"retract the awning"

"all lights off"

"night light on"

"night light off"

"all lights on"

"what is my fresh tank level?"

"get my gray tank level"

"additional command"

"what's the indoor temperature?"

"what's my internet status?"

"what's the shore power status?"

"enable the camera"

"set A/C to 70"

"A/C off"

"A/V system off"

 "what's the weather?"

"additional command"



# ASA *Voyager* Camera

For better RV maneuvering and visibility on the road, the ASA Voyager® 270 camera system features a three-camera bird's eye view, turn signal triggers and audible blind spot alerts.

## 270° OBSERVATION SYSTEM Safety Made Simple

### Auto-Calibration

Calibration between components happens in less than a minute. This patented production-friendly technology will save your team time and hassle.

### Birds-Eye View

Three cameras work together to generate a 270 degree seamless top down image of the drivers surroundings.

### Wireless

This industry-first wireless observation system brings assurance and peace of mind to anyone maneuvering extended vehicles without the hassle of additional wiring requirements.

## EXPAND YOUR VISION.

**NOTE:**

The Voyager 270 and ASA iN-Command® system with RV Halo™ Voice are optional features that can be added during the DRV build process.



# WELCOME TO MyDRV



**MyDRV** is a mobile app that allows customers to manage their RV, monitor warranty information, and track sales and past orders. You can also access a robust library of how-to content, checklists, and other valuable resources, right from your phone.

You can manage your RV online or by downloading the mobile app.

## CREATE YOUR ACCOUNT

Download the mobile app or activate online.

\*\*\*\*\*@gmail.com

\*\*\*\*\*

**STEP 1**  
Create an account or sign in to get started.

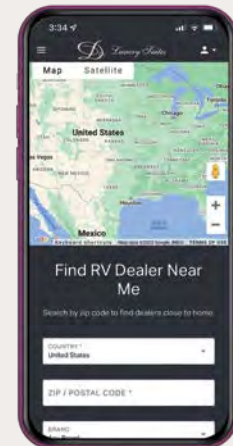
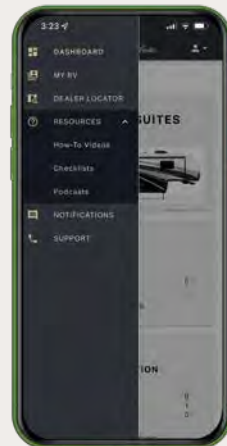
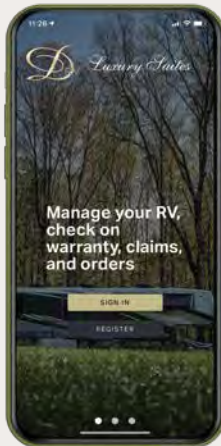
\*\*\* \*\* 12345

10/14/2021

**STEP 2**  
Verify your VIN number and purchase date.



**STEP 3**  
Verify your email.





## DRV Factory Tours

DRV Luxury Suites is open for factory tours, and we cannot wait to take you through the DRV build process and give you an in-depth look at the DRV Difference.

DRV factory tours are extremely important to our success and telling our story. Factory tours are a personal way to get to know our company and see many unique construction features we offer standard in all our products. We take pride in our quality and our construction and will spend as much time as we needed to make sure we answer all your questions. Factory tours are held **Monday, Wednesday, and Friday at 10 a.m. EST**, so please call ahead or click the link below to schedule your tour.

# Freedom is calling.

Mobile Suites

2023

## Peace of mind from coast to coast.

Relax. Your new DRV fifth wheel is backed by the best customer service on the road. Whether you need a mobile tech, warranty work or just a little help figuring out your electronics, we'll make it right. Anywhere in America.  
*That's true freedom.*

**DRVSuites.com**  
*Destination freedom.*



[www.suitesowners.com](http://www.suitesowners.com) | Be sure to join our outstanding DRV owner's club!

0160 W 750 N | PO Box 235 | Howe, IN 46746  
Factory tours by appointment. Please call 260-562-1075 for specifics.

