

2024
MODEL YEAR

CLASS A GAS
ECLIPSE

HR HOLIDAY RAMBLER
holidayrambler.com

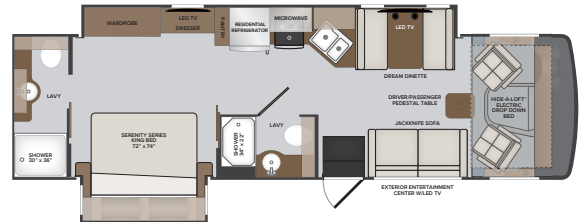
32S | 34J | 35R



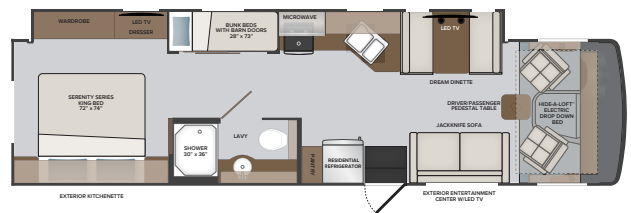
TOP FEATURES

- Ford 7.3L V8. (335 HP, 468ft.lb.)
- 22,000 pound chassis
- One piece fiberglass rear cap
- Standard full body paint
- Side-View Camera Integrated in Exterior Mirrors
- Wifi Ranger comes standard boosting any existing Wifi signal
- 8,000 pound tow hitch
- MultiPlex house controls that can be controlled by your smart phone or tablet.
- Safe-T-View camera display *(optional)*
- Standard Hide-A-Loft™ electric drop down bed
- Standard residential refrigerator. *LP refrigerator optional.*
- Pre wired for solar panel.
- Tarkett interlocking composite flooring.
- Dash stereo with Apple CarPlay, Android Auto, and tilt screen.
- No luan backer on fiberglass sidewall reducing the possibility of delamination.
- Large one piece panoramic windshield

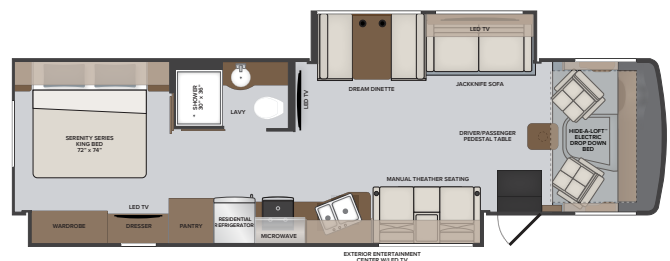
32S



34J



35R



AVAILABLE OPTIONS

- Double Door Dometic 8 cu. Ft.³ LP Refrigerator
- Washer / Dryer All-In-One Combo (35R)
- Stackable Washer & Dryer (35R)
- Manual Theater Seating (32S & 34J)
- Collision Mitigation
- Power Driver's Seat
- King Stationary Satellite Universal System
- Safe-T-View
- Roof Vent Covers
- Steering Stabilizer System



OPT. 105
DOMETIC 8CF
DOUBLE DOOR
REFRIGERATOR LP



OPT. 126
W/D ALL IN
ONE COMBO



OPT. 194
MANUAL THEATER SEATING

2024
MODEL YEAR

CLASS A GAS
ECLIPSE

HR HOLIDAY RAMBLER
holidayrambler.com

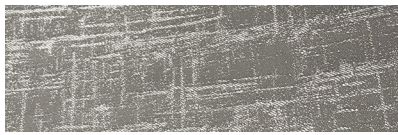
BAYVIEW



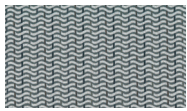
SOFA



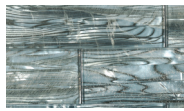
LIVING ACCENT



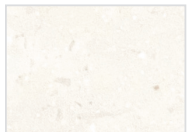
BEDDING



VALANCE



BACKSPLASH

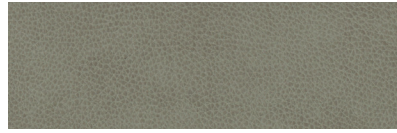


COUNTERTOP



FLOORING

NEWPORT



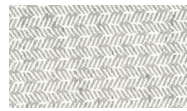
SOFA



LIVING ACCENT



BEDDING



VALANCE



BACKSPLASH



COUNTERTOP

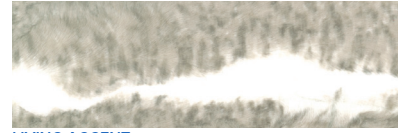


FLOORING

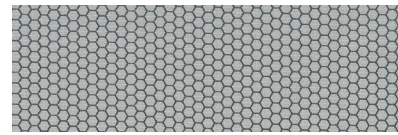
PORTOBELLO



SOFA



LIVING ACCENT



BEDDING



VALANCE



BACKSPLASH



COUNTERTOP



FLOORING



FOSSIL



NEW MY2024
URBAN CAFE



NEW MY2024
GUINNESS

**NEW CABINETRY
DOOR PROFILES FOR
MODEL YEAR 2024**

CHASSIS

MODEL	32S	34J	35R
Wheelbase	208"	228"	228"
Front GAWR (lbs)	8,000	8,000	8,000
Rear GAWR (lbs)	15,000	15,000	15,000
GCWR (lbs)	26,000	26,000	26,000
Hitch Rating Weight (lbs)	8,000	8,000	8,000
Tongue Weight (lbs)	800	800	800
Fuel Capacity (gal)	80	80	80

FORD® CHASSIS

Model: Ford®
Engine: 7.3L Triton V8
Transmission: Ford® 6-Speed, Automatic w/Overdrive
Alternator: 210 Amp
Torque: 468 lb.-ft. @ 3,750 RPM
Horsepower: 335HP @ 3,750 RPM



DIMENSIONS AND CAPACITIES

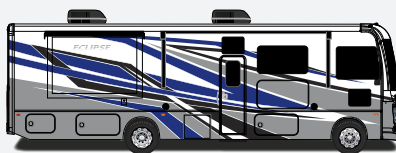
	32S	34J	35R
Overall Length	33' 6"	36' 0"	36' 0"
Overall Height	12' 4"	12' 4"	12' 4"
Overall Width*	100"	100"	100"
Interior Height*	82"	82"	82"
Interior Width*	96"	96"	96"
Patio Awning Width	14'	22'	18'
Interior Storage (cu. ft.)	97	110	130
Exterior Storage (cu. ft.)	83	82	160
Fresh Water Capacity (gal)	50	50	50
Grey Water Capacity (gal)	74	37	37
Black Water Capacity (gal)	37	37	37

*Overall Width, Interior Height and Interior Width measured with slide-box in.

EXTERIORS



EUCALYPTUS



PRIDE



SILVERADO

ECLIPSE