

| | | |
|---|--|---|
| 20  24 | <i>Kountry Star</i> DIESEL MOTORCOACH |  |
|---|--|---|





Stand out. Settle in.

The perfect blend of simplicity and excellence, the 2024 Kountry Star proves our dedication to quality. This hand-crafted, versatile coach offers you all the comforts of home while providing endless opportunities for abundant adventuring.



Kountry Star

Freightliner® XCR Chassis



34'-40' / 8 floor plans

Cummins B
Diesel Engine

360 HP

800 lb./ft. torque

Rochford Full-Paint
Masterpiece Finish™
Exterior



Cockpit

Six-Way Powered Driver's Seat

**Industry-First Comfort Drive™
Adaptive Steering**

**Mobileye® Lane Tracking
and Lane Departure System**

Glass Dash Instrument Panel

180-Watt Harman/JBL Sound System

USB and USB-C Connections

Xite Dash Radio (Optional)
6.5" Monitor

Nav-N-Go Navigation System

Side-View Camera System





Floor plan 4037 with Yukon décor and Toffee cabinets

Cabin

Three Décor Options:
Yukon*, Brunswick, and Manitoba

87" Jack Knife Sofa**

Fireplace in Living Area (Optional)

Samsung® 4K LED TV on Televator

Bose® Soundbar System

32" Samsung® LED TV in Front Overhead (Optional)

Mid-Ship Dedicated Workspace¹

Beverage Center with Wine Cooler and Stemware Rack¹ (Optional)

*New for 2024
**See Features and Options for all available furniture configurations
¹Exclusively available on floor plan 4068



Cabin

WiFiRanger Everest System with Aspen Router (Optional)

Two 15K BTU Penguin™ Heat Pump Central Air Conditioners

Vinyl Plank Floor (Optional)



Floor plan 4037 with Yukon décor and Toffee cabinets



Galley & Dinette

30" Convection Stainless Microwave

Recessed Three-Burner Cooktop

Glazed Maple Flat Designer Cabinets

Available in Six Matte Finish Color Options

Soft-Close Cabinet Doors

Undermounted LED Lights

Polished Solid-Surface Countertop

Kitchen Window

Combo Dinette* (Optional)



** Additional dinette configurations available; see Features and Options for details*





Bedroom

King Bed with Pillow Top Mattress*

Adjustable-Support Air Bed (Optional)

Dresser and Two Shirt Wardrobes*

Samsung® LED TV

**Select floor plans*



Bathroom

Residential Shower*

Polished Solid-Surface Countertop

**Truma AquaGo Comfort Plus
Continuous Water Heater** (Optional)

**Splendide® Two-Piece Stacked
Washer and Dryer** (Optional)

Linen Storage



**Shower size and style vary by floor plan*



Exterior & Storage

Industry-Exclusive Full-Paint Masterpiece Finish™

Three Graphic Design and Color Options

Carefree Travel'r Power Side and Entrance Door Awning

LED Strip Lighting

Exterior Entertainment System (Optional)

43" Samsung® LED TV

Bose® Soundbar



Exterior



- Silverstar Ultra Headlight Bulbs**
- Industry-Exclusive STAR Foundation**
- 8.0 kW Cummins Onan® Diesel Quiet Series Generator**
Automatic Generator Start on Low Battery or Temperature Setting



interior & exterior
Design Options



Belfast



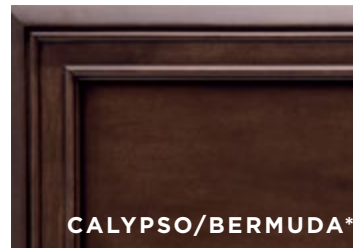
Awning Color: Charcoal Tweed

BRUNSWICK INTERIOR a. Furniture/Fabric b. Flooring c. Counter Top



**Exterior colors and interior décor options can be matched to customer preference.*

CABINET FINISHES



**Available in Matte Finish*

Rochford

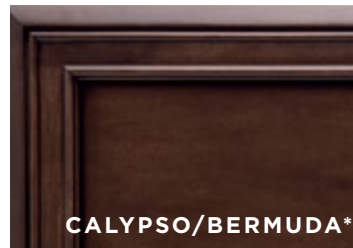


Awning Color: Charcoal Tweed

MANITOBA INTERIOR a. Furniture/Fabric b. Flooring c. Counter Top



CABINET FINISHES



**Exterior colors and interior décor options can be matched to customer preference.*

**Available in Matte Finish*

Rother



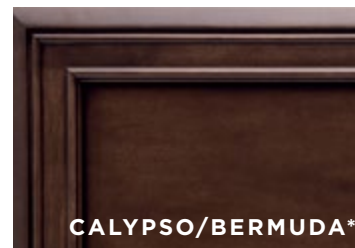
Awning Color: Linen Tweed

YUKON INTERIOR a. Furniture/Fabric b. Flooring c. Counter Top



**Exterior colors and interior décor options can be matched to customer preference.*

CABINET FINISHES

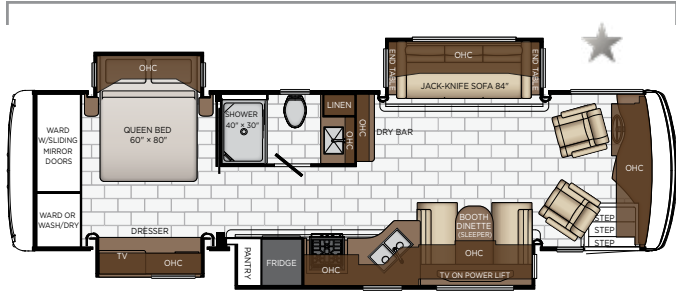


**Available in Matte Finish*

Floor Plan Specifications

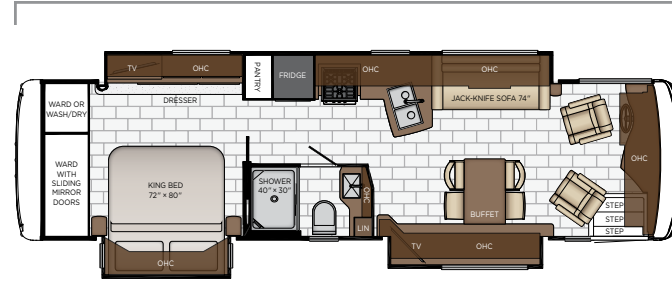


Length: 34' 10"



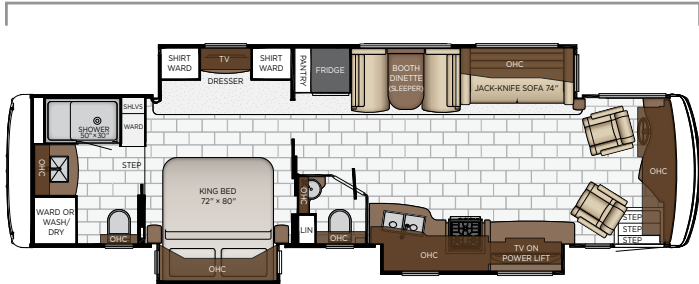
| | | | | |
|-------------|---------------------|---------|--------------|------------|
| 3418 | Length | 34' 10" | Grey Tank | 65 gal. |
| | Width | 101.5" | Sewage Tank | 45 gal. |
| | App. Overall Height | 12' 10" | Water Tank | 105 gal. |
| | Interior Width | 95.5" | Propane Tank | 32 gal. |
| | Interior Height | 83" | Furnace | 35,000 btu |

Length: 34' 10"



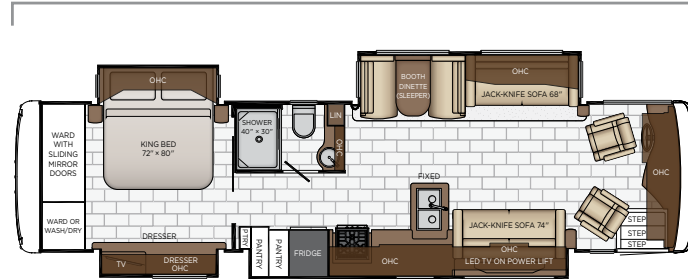
| | | | | |
|-------------|---------------------|---------|--------------|------------|
| 3426 | Length | 34' 10" | Grey Tank | 65 gal. |
| | Width | 101.5" | Sewage Tank | 45 gal. |
| | App. Overall Height | 12' 10" | Water Tank | 105 gal. |
| | Interior Width | 95.5" | Propane Tank | 32 gal. |
| | Interior Height | 83" | Furnace | 35,000 btu |

Length: 37' 10"



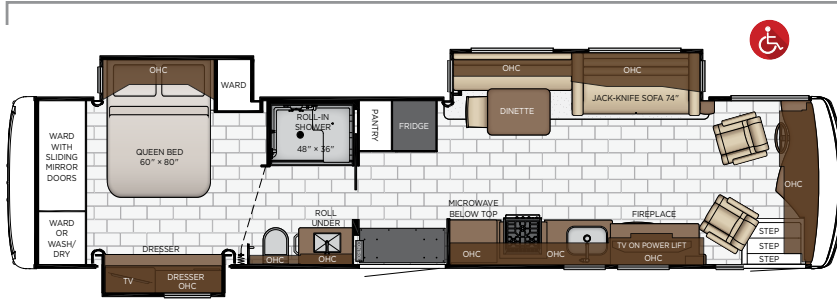
| | | | | |
|-------------|---------------------|---------|--------------|------------|
| 3709 | Length | 37' 10" | Grey Tank | 65 gal. |
| | Width | 101.5" | Sewage Tank | 45 gal. |
| | App. Overall Height | 12' 10" | Water Tank | 105 gal. |
| | Interior Width | 95.5" | Propane Tank | 32 gal. |
| | Interior Height | 83" | Furnace | 54,000 btu |

Length: 37' 10"



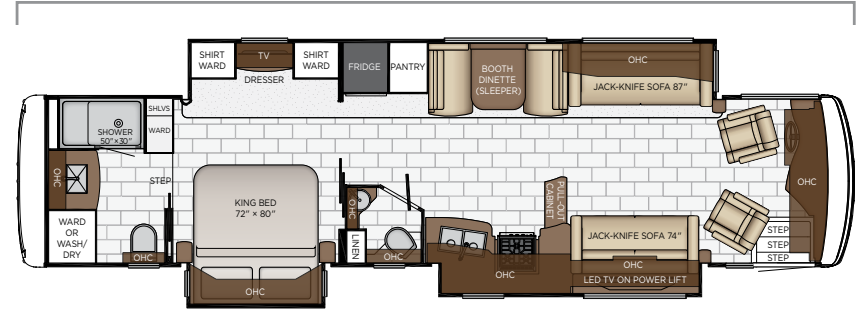
| | | | | |
|-------------|---------------------|---------|--------------|------------|
| 3717 | Length | 37' 10" | Grey Tank | 65 gal. |
| | Width | 101.5" | Sewage Tank | 45 gal. |
| | App. Overall Height | 12' 10" | Water Tank | 105 gal. |
| | Interior Width | 95.5" | Propane Tank | 32 gal. |
| | Interior Height | 83" | Furnace | 54,000 btu |

Length: 40' 10"



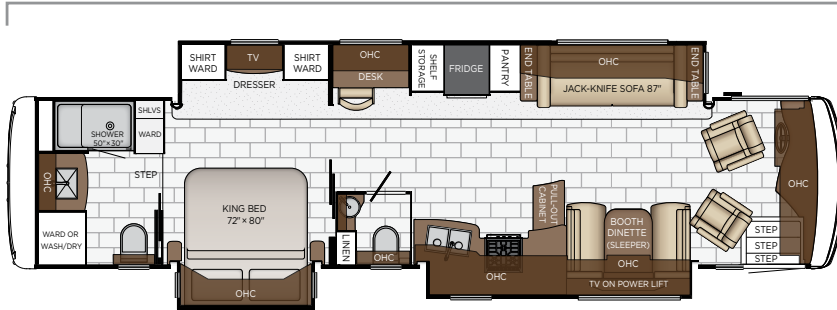
| | | | | |
|-------------|---------------------|---------|--------------|------------|
| 4011 | Length | 40' 10" | Grey Tank | 65 gal. |
| | Width | 101.5" | Sewage Tank | 45 gal. |
| | App. Overall Height | 12' 11" | Water Tank | 105 gal. |
| | Interior Width | 95.5" | Propane Tank | 32 gal. |
| | Interior Height | 83" | Furnace | 54,000 btu |

Length: 40' 10"



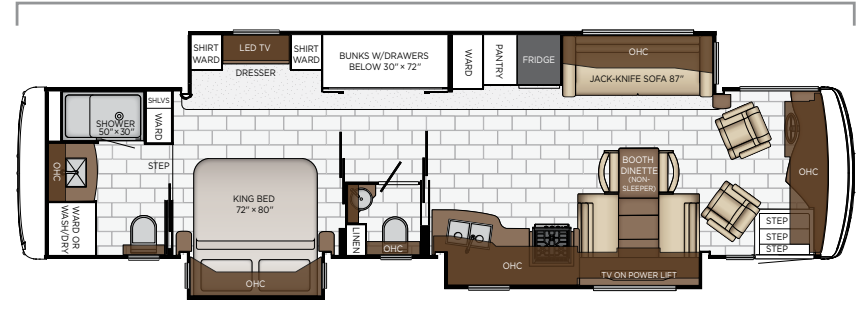
| | | | | |
|-------------|---------------------|---------|--------------|------------|
| 4037 | Length | 40' 10" | Grey Tank | 65 gal. |
| | Width | 101.5" | Sewage Tank | 45 gal. |
| | App. Overall Height | 12' 11" | Water Tank | 105 gal. |
| | Interior Width | 95.5" | Propane Tank | 32 gal. |
| | Interior Height | 83" | Furnace | 54,000 btu |

Length: 40' 10"



| | | | | |
|-------------|---------------------|---------|--------------|------------|
| 4068 | Length | 40' 10" | Grey Tank | 65 gal. |
| | Width | 101.5" | Sewage Tank | 45 gal. |
| | App. Overall Height | 12' 11" | Water Tank | 105 gal. |
| | Interior Width | 95.5" | Propane Tank | 32 gal. |
| | Interior Height | 83" | Furnace | 54,000 btu |

Length: 40' 10"



| | | | | |
|-------------|---------------------|---------|--------------|------------|
| 4070 | Length | 40' 10" | Grey Tank | 65 gal. |
| | Width | 101.5" | Sewage Tank | 45 gal. |
| | App. Overall Height | 12' 11" | Water Tank | 105 gal. |
| | Interior Width | 95.5" | Propane Tank | 32 gal. |
| | Interior Height | 83" | Furnace | 54,000 btu |

Quality You Can Feel

Like a fine home, the 2024 Kountry Star is framed 16 inches on center and is covered by a fiberglass roof with an integrated gutter rail.

| FREIGHTLINER® | | | | | | | | | | | |
|---------------|-----------|------------|-----------|------------|------------|-----------|----------|-----------|-----------|-----------|----------|
| FLOOR PLAN | ENGINE HP | AXLE RATIO | FUEL CAP. | WHEEL BASE | FRONT GAWR | REAR GAWR | TAG GAWR | GVWR | GCWR | APP. UVW | APP. NCC |
| 3418 | 360 | 4.78 | 100 gal. | 206 | 12600 lb. | 21000 lb. | n/a | 33600 lb. | 43600 lb. | 27800 lb. | 5800 lb. |
| 3426 | 360 | 4.78 | 100 gal. | 206 | 12600 lb. | 21000 lb. | n/a | 33600 lb. | 43600 lb. | 27300 lb. | 6300 lb. |
| 3709 | 360 | 4.78 | 100 gal. | 242 | 13700 lb. | 24000 lb. | n/a | 37700 lb. | 47700 lb. | 29300 lb. | 8400 lb. |
| 3717 | 360 | 4.78 | 100 gal. | 242 | 13700 lb. | 24000 lb. | n/a | 37700 lb. | 47700 lb. | 29000 lb. | 8700 lb. |
| 4011 | 360 | 4.78 | 100 gal. | 276 | 15000 lb. | 24000 lb. | n/a | 39000 lb. | 49000 lb. | 29600 lb. | 9400 lb. |
| 4037 | 360 | 4.78 | 100 gal. | 276 | 15000 lb. | 24000 lb. | n/a | 39000 lb. | 49000 lb. | 30700 lb. | 8300 lb. |
| 4068 | 360 | 4.78 | 100 gal. | 276 | 15000 lb. | 24000 lb. | n/a | 39000 lb. | 49000 lb. | 31100 lb. | 7900 lb. |
| 4070 | 360 | 4.78 | 100 gal. | 276 | 15000 lb. | 24000 lb. | n/a | 39000 lb. | 49000 lb. | 30900 lb. | 8100 lb. |

The content in our literature depicts and describes products that are subject to change. For the most recent images and information, please visit NewmarCorp.com.

Lengths, heights, widths, and dry weights are approximate. Weight will vary based on optional equipment added to the above base weight.

GAWR: Gross Axle Weight Rating is the maximum permissible weight for an axle.

GVWR: Gross Vehicle Weight Rating is the maximum permissible weight for a fully loaded motor coach.

GCWR: Gross Combination Weight Rating is the value specified by the manufacturer of the vehicle as the maximum allowable loaded weight of this motor coach and any towed trailer or towed vehicle.

UVW: Unloaded Vehicle Weight is the weight of this motor coach as built at the factory with full fuel, engine oil, and coolants. Does not include cargo, fresh water, propane gas, or dealer-installed accessories.

NCC: Net Carrying Capacity is the maximum weight of all occupants, including the driver, personal belongings, food, fresh water, waste water, propane gas, tools, tongue weight of towed vehicle, dealer-installed accessories, etc., that can be carried by the motor coach.

Specifications supplied by the chassis manufacturer.

Kountry Star R-Values:

- Roof R-Value = 19
- Sidewall R-Value = 11
- Floor R-Value = 16
- Basement R-Value = 4

Features & Options



EXTERIOR FEATURES

| |
|--|
| Full-Paint Masterpiece Finish™ with Clearcoat Finish |
| Diamond Shield Protection on Front Cap |
| Convex Exterior Mirrors with Remote Control and Defrost |
| Entrance Door with Automatic Step |
| Assist Handle at Entrance Door |
| Smart Level Hydraulic Leveling Jacks with Bluetooth Compatible Touch Pad |
| Mud Flaps |
| Rear Ladder* |
| Rear Hitch for Towing Car |
| Undercoating |
| Wheelchair Lift on 4011 |

OPTIONS

| |
|---|
| Flag Pole Bracket |
| Storage Tray 30" X 90" Power Location-Bay 3 |

CONSTRUCTION FEATURES

| |
|--|
| Gelcoated Fiberglass Exterior Sidewalls, Front and Rear Caps |
| Aluminum-Frame Sidewalls and Roof Construction, 16" on Center |
| 5/8" Foam Insulation Laminated in Sidewalls and Ceiling |
| Polar Pak R19 Batten Insulation in Roof |
| One-Piece Molded Fiberglass Roof |
| Automatic Mechanical Lock Arms on Slideout Rooms-Scissor Style |
| Power Opening Entrance Door for Wheelchair Lift on 4011 |

OPTIONS

| |
|---------------------------------|
| Egress Door with Ladder System* |
|---------------------------------|

WINDOWS, AWNINGS, & VENTS

| |
|--|
| One-Piece Tinted Windshield |
| Frameless Double-Pane Tinted Safety-Glass Windows |
| Fan-Tastic® Vent with Rain Sensor in Kitchen and Bathroom |
| Skylight Above Shower |
| Carefree Travel'r Power Side and Entrance Door Awning with Alumaguard and LED Strip Lighting |
| Slideout Awning Covers |
| Kitchen Window* |
| Entrance Door to Lock/Unlock Automatically with Park Brake |

OPTIONS

| |
|--|
| Bunk Windows |
| Screen Door Over Wheelchair Lift on 4011 |

CHASSIS FEATURES

| |
|---|
| Freightliner® XCR Chassis with 360Hp Cummins ISB Engine 34'-40' Floor Plans |
| Aluminum Wheels |
| Comfort Drive™ Steering System with Power Column and Adjustable Control |
| V-Ride Drive Axle Suspension |
| Cruise Control |
| Manual Tilt and Telescope Steering Wheel with VIP Smart Wheel |
| Recessed Fuel Fills with Crossover to Fill from Either Side |
| Anti-Lock Braking System |
| Chassis Battery Disconnect |
| Glass Dash Instrument Panel |
| Dash Panel Optiview |
| Headlights Automatic High Beam |
| Mobileye® Lane Tracking and Lane Departure Warning System |

AIR CONDITIONING & HEATING

| |
|---|
| Two 15K BTU Penguin™ Heat Pump Air Conditioners |
| Propane Furnace with Ducted Heat |
| Dash Heater and Air Conditioner |
| Wall Mounted Sensors for Heating and Air Conditioning |
| Built in Overhead Defroster Blower Fan |

ELECTRICAL FEATURES

| |
|--|
| 8.0 kW Cummins Onan® Diesel Quiet Series Generator |
| 50 Amp Electrical Service with Flexible Cord and Automatic Transfer Switch |
| Automatic Generator Start on Low Battery or Temperature Setting |
| Four 6-Volt House Batteries on Pull-Out Tray |
| Battery Disconnect Switch for House Battery |
| 2000 Watt Xantrex Tru Sine Inverter |
| Emergency Engine Start Switch |
| Energy Management System |
| Exterior Security Light on Doorside |
| Mid-Ship Side Turn Signals |
| LED Lights Recessed in Ceiling and Underneath Overhead Cabinets |
| LED Awning Strip Lighting |
| Manually Operated Hold-To-Run Slideout Switch |
| 12-Volt Auxiliary Receptacle on Dashboard |
| USB Charger At Dinette and Bedroom Night Stand |
| USB Outlet at Dash for Driver Use |
| 110V USB Outlet at Head of Each Bunk Area* |
| 110V Recept in Bed Overhead with Two Pass-Through Ports |

| |
|--|
| Engine Block Heater |
| Cable TV Connection |
| Lights in Exterior Storage Compartments |
| Interior Courtesy Lights |
| Spare Fuses in Chassis Fuse Panel and House Fuse Panel |
| Multiplex Monitor System 10.1" in Center of Coach with Interior Lighting and HVAC Controls |
| Power Rewind Reel with 33' Cord* |
| Dash Radio, Cameras and Monitors to Power-Up from Both House Batteries and Ignition |

OPTIONS

| |
|--------------------------------------|
| Transfer Switch with Surge Protector |
|--------------------------------------|

PLUMBING & BATH FEATURES

| |
|---|
| Demand Water System |
| Sewage Holding-Tank Rinse |
| Water Heater Bypass System |
| Dometic® 321 China Bowl Stool or Macerator Stool* |
| Exterior Shower |
| Water Filter for Entire Unit |

INTERIOR FEATURES

| |
|---|
| Dash Panel Color Coordinated ABS |
| Interior Assist Handle at Main Entry Door |
| Power Stepwell Cover |
| Inlaid Six Panel Design Interior Passage Doors |
| Decorative Wall Art |
| Feature Ceiling |
| Vinyl Tile Floor in Kitchen, Bathroom and Living Area |
| Carpeting on Slideout Floors |
| MCD Window Shades |
| MCD Power Shades at Windshield and Manual Shades on Driver and Passenger Side Windows |
| Fitted Cam-Quilted Bedspread with Picture Frame Accent and Accent Pillow |
| Wastebasket in Kitchen Base Under Sink |

OPTIONS

| |
|---|
| Vinyl Plank Floor in Place of Vinyl Tile |
| MCD Power Window Shades with Remote Control on 4011 |

CABINETS & FURNITURE

| |
|---|
| Calypso Glazed Maple Mitered Flat Designer Cabinet Doors with Matte Finish |
| Concealed Hinges on Cabinet Doors |
| Drawers with Full Extension Ball Bearing Guides |
| Fixed Pantry Shelves |
| Cooktop Cover Flush, Matching Countertop Material |
| Soft-Close Cabinet Drawers |
| Polished Solid-Surface Countertop in Kitchen with Undermounted Stainless Steel Sink and Sink Covers |
| Polished Solid-Surface Countertops in Bathroom and Bedroom |
| Ultralux Sofa and Front Seats |
| Plush Pillow Top Mattress |
| Lifts on Bed Top |
| Front Seats with 6-Way Power |
| Driver Seat with Vibrator for Mobileye® System |
| Manual Foot Rest on Passenger Seat |
| Passenger Seat Work Station |
| Desk with One Chair* |
| Dinette Booth Williamsburg Convertible* |
| Dinette with Power Adjustable Table, Bench Seat and Folding Chair on Wheelchair Accessible Floor Plan |
| Villa Comfort Fit Furniture |
| Mesh Cell Phone Holder at Each Bunk Bed* |
| Extended Rotation Concealed Hinge for Washer and Dryer Cabinet Door |

OPTIONS

| |
|--|
| Amaretto Glazed Maple Mitered Flat Designer Cabinet Doors with Matte Finish |
| Arctic "B" Glazed Maple Mitered Flat Designer Cabinet Doors with Matte Finish |
| Toffee Glazed Maple Hardwood Mitered Flat Designer Cabinet Doors with Matte Finish |
| Glacier Glazed Maple Hardwood Mitered Flat Designer Cabinet Doors with Matte Finish |
| Bermuda Glazed Maple Hardwood Mitered Flat Designer Cabinet Doors with Matte Finish |
| Bunk Bed Drop Down Over Driver and Passenger Seats. Extends to Windshield with Bunk Ladder* |
| Bunk Bed Drop Down Over Driver and Passenger Seats. Extends to Windshield with Bunk Ladder and Fireplace with TV |
| Combination Desk with Buffet Dinette Table, Two Fixed and Two Folding Chairs |
| Buffet Dinette with Two Fixed and Two Folding Chairs |
| Euro Booth Dinette with One Table Leaf on 3426 |

| |
|--|
| Euro Booth Dinette with Two Table Leaves, Removable Table Leg and Two Folding Chairs |
| Side 87" Hide-A-Bed Sofa* |
| Sofa 87" Hide-A-Bed with Memory Foam Mattress |
| Sofa Hide-A-Bed with Memory Foam Mattress |
| Sofa Visionary Trifold 74" |
| R5 Square Air Mattress |
| R5 Radius Corner Air Mattress |
| Powered Theater Seating 68" with Reading Lights and Lighted Cup Holders |
| Powered Theater Seating 74" with Reading Lights and Lighted Cup Holders |
| Powered Theater Seating 84" with Reading Lights |
| Powered Theater Seating 87" with Reading Lights and Lighted Cup Holders |
| Powered Theater Seating 87" with Reading Lights |
| Two Recliners with Lampstand and Reading Lights |
| Full Height Bed Base on 4011 |

APPLIANCES & ACCESSORIES

| |
|--|
| 30" Stainless Steel Convection Microwave with 3-Burner Cooktop and Air Fryer Feature |
| 10 Gal. Gas/Electric Water Heater with Direct-Spark Ignition |
| Prep for Two-Piece Washer/Dryer |
| Air Horns |

OPTIONS

| |
|---|
| Norcold® 12 Cu. Ft. Four-Door Refrigerator with Icemaker |
| Whirlpool® 19.7 Cu. Ft. Refrigerator, Two Extra 6-Volt Batteries and 22 Gal. Propane Tank |
| Whirlpool® 19.7 Cu. Ft. Refrigerator, Two Extra 6-Volt Batteries and 22 Gal. Propane Tank and Heated Water Line |
| Whirlpool® 11 Cu. Ft. Refrigerator, Extra 6-Volt Batteries, 22 Gal. Propane Tank and Icemaker |
| Whirlpool® 11 Cu. Ft. Refrigerator, Extra 6-Volt Batteries and 22 Gal. Propane Tank |
| 30" Stainless Steel Convection Microwave with Air Fryer Feature in Kitchen Overhead |
| Beverage Center with Wine Cooler and Stemware Rack* |
| Splendide® Two-Piece Stacked Washer and Dryer |
| Fireplace in Living Area* |
| Central Vacuum with Tool Kit |
| Truma Comfort Plus Continuous Hot Water Heater |

AUDIO, VIDEO & ACCESSORIES

| |
|---|
| Samsung® LED TV in Living and Bedroom Areas, TV Sizes Vary per Floor Plan* |
| Samsung® 50" 4K LED Televator TV in Living Area, on Selected Floor Plans* |
| Samsung® 50" on Televator with Fireplace on 4011 Floor Plan |
| Dash Radio with Harman/JBL 180 Watt Sound System and Subwoofer |
| Bluetooth Microphone for Dash Radio |
| Rearview Color Monitor System with Audio |
| Side-View Cameras Displayed onto Rearview Monitor Screen |
| Winegard Digital Crank Up TV Antenna |
| Satellite Prep on Roof |
| TV Jack and 110-Volt Recept in Door Side Exterior Storage Compartment |
| High Definition Component Wiring |
| Bose® Soundbar Sound System |
| 10 Bc Fire Extinguisher, Smoke Detector, Propane and Carbon Monoxide Detector |

OPTIONS

| |
|--|
| Samsung® 32" LED TV in Front Overhead* |
| Two 19" Skyworth TV/DVD Monitors at each Bunk* |
| Xite Dash Radio, 6.5" Monitor with Nav-N-Go Navigation System |
| Exterior Entertainment Center in Sidewall with Samsung® 43" LED TV and Soundbar |
| Exterior Entertainment Center in Storage Compartment with Samsung® 43" LED TV and Soundbar |
| SiriusXM® Capability with Antenna (Does Not Include Monthly Subscription) |
| WiFi Ranger Denali/Spruce LTE |
| WiFi System Everest with Aspen Interior Router |
| Winegard Automatic Dome Satellite Dish-Std/HD, DIRECTV Std. and Bell Canada |
| Winegard Automatic Open Face Satellite Dish-HD and Bell HD TV |
| Winegard Automatic Open Face SWM Satellite Dish-DIRECTV Std/HD |
| Winegard In-Motion Dome Satellite Dish-Std/HD, DIRECTV Std. and Bell Canada |
| Winegard Rayzar Automatic Digital TV Antenna |

*Check with dealership on floor plan availability





A. ROOF

Fiberglass Roof
 Batten Insulation
 A/C Ducting
 16" on Center Aluminum Rafter Framing
 Kraft Paper Vapor Barrier
 5/8" Bead Foam
 3/16" Panel
 Padded Vinyl Overlay

B. SIDEWALL

Interior Wall Panel
 5/8" Bead Foam
 Kraft Paper Vapor Barrier
 Batten Insulation
 Composite One-Piece
 Gelcoat Exterior Sidewall
 Aluminum Framing

C. FLOOR

Carpet/Tile
 Carpet Padding
 5/8" Floor Decking
 Batten Insulation
 16" on Center Wood Framing
 Polyethylene Moisture Barrier

D. EXTERIOR

15K BTU Penguin™ Heat Pump Central
 Air Conditioner
 One-Piece Bonded Windshield
 Coated Aluminum Wheels
 Frameless, Double-Pane,
 Tinted Safety Glass Windows
 Side-Hinged Baggage Doors with
 Optional Pull-Out Tray

The Newmar Customer Experience

The Newmar Difference™ goes beyond our industry-leading motor coaches to provide you with an unrivaled ownership experience.



Quality from the Start

Every Newmar is crafted one at a time by folks who have spent an average of eight years building them. And each coach we assemble must undergo more than 1,000 tests and checks before ever leaving our factory.



Carefully Selected Dealers

We view our dealership network in terms of quality, not quantity. Each of our dealers acts as a partner in our shared mission to exceed your highest of expectations, for an ownership experience that's second to none from day one.



Everything in One Place

As a Newmar owner, you'll find resources specific to your coach through Newgle, an easy-to-use knowledge base that houses everything from user guides to technical support documents.



Friends for Life

Meet fellow owners through the Newmar Kountry Klub, a top social club for RV travelers that hosts rallies and other special events throughout the U.S. and Canada.



Seamless Service

When you join the Newmar family, we pair you with a dedicated service specialist with expert knowledge of your exact coach. Our service specialists guarantee dealer warranty authorizations within four business hours and ship all in-stock parts the same day, free of charge.



Rock-Solid Protection

All models include a one-year/unlimited mileage limited warranty and a five-year, non-transferable structural warranty that covers your coach's superstructure in the event it fails to perform. Ask your Newmar dealer for more details.

Our Partners

The Newmar Difference™ begins with suppliers dedicated to providing our customers with unrivaled quality, comfort, and support.



BASF

The Coatings division of BASF is a global expert in the development and production of innovative and sustainable OEM and refinish coatings. Coatings by BASF—solutions beyond your imagination.



Industrial Finishes

Industrial Finishes has supported RV manufacturers for over four decades, offering paint products that deliver uncompromising quality and provide your coach with a true Masterpiece™ finish.



Driven By You

*Freightliner
Custom Chassis*

Freightliner Custom Chassis are renowned for their exceptional ride, excellent maneuverability, advanced technology, and nationwide 24/7 factory-direct support.



RiverPark

From Samsung® 4K TVs and Xite Infotainment systems to Bose® soundbars and JBL and Infinity premium audio systems, RiverPark helps you experience a higher level of technology in your Newmar coach.



Spartan RV Chassis

An American company with over 30 years of experience in designing and manufacturing the premier motorhome chassis, Spartan delivers superior performance, exceptional safety ratings, and industry-leading technology.



WHEN YOU KNOW THE DIFFERENCE™