

Single Axle



180BHS



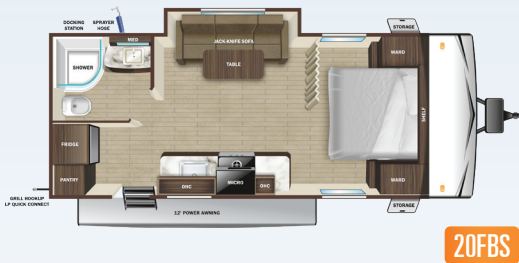
19BH



182RB



188BHS



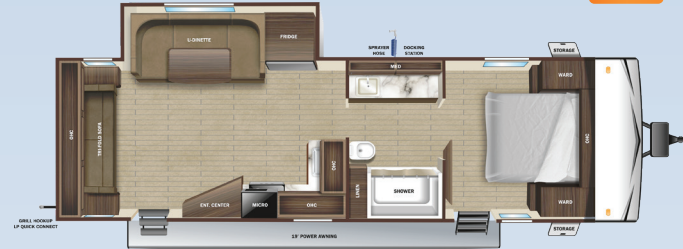
20FBS



20MB



26BH



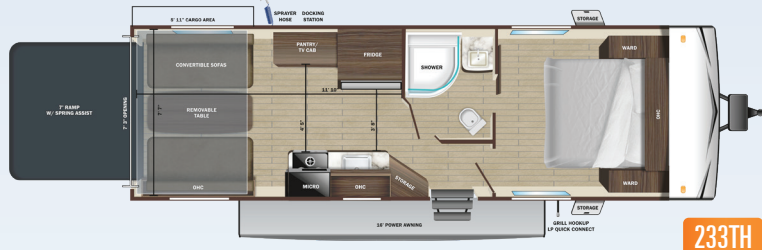
26RLS



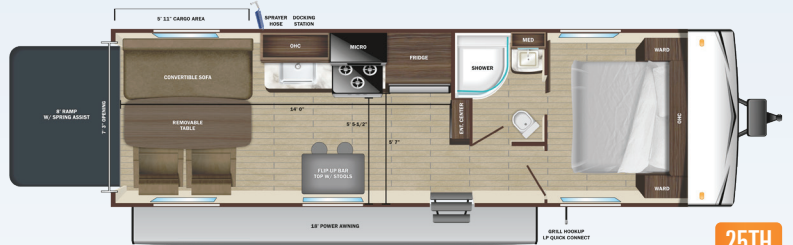
26BHS



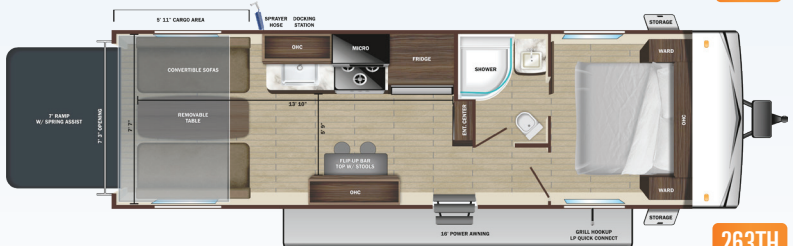
28BHS



233TH



25TH



263TH

OPEN RANGE CONVENTIONAL

2024 TRAVEL TRAILERS

STANDARD INTERIOR EQUIPMENT

- » 75 lb. ball bearing drawer guides
- » 81" interior height
- » AM/FM/Bluetooth® radio with indoor/outdoor zoned speakers
- » Closeable A/C vents
- » Flush floor slides with residential vinyl flooring
- » Foot flush toilet
- » Hardwood cabinet doors
- » LED interior lighting
- » Pleated blackout night shades
- » Pocket-screwed lumbercore cabinet construction
- » Pressed membrane kitchen countertops
- » Range hood
- » Residential high-rise kitchen faucet
- » Single basin under-mount kitchen sink
- » Storage below main bed

STANDARD EXTERIOR EQUIPMENT

- » 120 GFCI protected receptacle
- » 5/8" main floor decking
- » 96" exterior width
- » Black front diamond plate protection
- » Exterior docking center (dual axle models)
- » Detachable power cords
- » Fiberglass insulation
- » Flexible LP lines
- » Galvanized wheel wells
- » Grab handle
- » Griddle with bumper bracket (26BHS, 28BHS, 188BHS)
- » In-frame battery rack
- » Magnetic baggage door catches
- » Magnum Roof™ system
- » Marine grade exterior speakers (2)
- » PVC roofing membrane (limited lifetime warranty)
- » Rain guttering with molded drip spouts
- » Rear camera prep
- » Safety bumper with drain hose carrier and end caps

- » Self-adjusting electric brakes and E-Z Lube® axles
- » Thermal Seal- enclosed, insulated, and heated underbelly and fully insulated roof with a PVC roofing membrane (dual axle models)
- » Tinted safety-glass windows throughout

CUSTOMER CONVENIENCE PACKAGE (MANDATORY)

- » 13,500 BTU roof mounted A/C
- » 17" oven (dual axle models)
- » 2-burner range with glass cover (single axle models)
- » 3-burner range with glass cover (dual axle models)
- » Dome style digital TV antenna
- » Gas/electric water heater
- » Microwave
- » Powered awning with LED lighting
- » Powered bathroom vent
- » Nitrogen filled radial tires
- » Residential vinyl flooring throughout
- » Stabilizer jacks (4-dual axle models, 2-single axle models)
- » Solid swing down step (main)
- » Entrance door with window and shade prep
- » Water heater bypass
- » Xtend Solar I Package (200 watt solar panel with 30 amp controller)

OPTIONS

- » 14" Aluminum Rims 14" ( 182RB, 20MB, 20FBS, 26BH, 26BHS, 26RLS, 27BH, 28BHS, 233TH 263TH)
- » 15" Aluminum Rims 15" (19BH, 180BHS, 188BHS, 25TH)
- » 15,000 BTU A/C (dual axle models)
- » 50 amp service with 2nd A/C (26BHS, 26RLS, 28BHS)
- » Fiberglass Sidewalls (n/a 233TH, 25TH, 263TH) (N/A Olympia)
- » Griddle with bumper bracket (20FBS, 26BH, 20MB, 26RLS, 182RB, 19BH, 180BHS)
- » MOAB Pkg (Western built units only) (Aluminum Rims option N/A) (N/A 233TH, 25TH, 263TH)
- » Ramp Patio (233TH, 25TH, 263TH)
- » Smart TV
- » Spare tire with carrier (mandatory on single axle models)

SPECIFICATIONS	180BHS†	19BH†	182RB	188BHS**	20FBS	20MB	26BH	26RLS	26BHS	28BHS	233TH**	25TH**	263TH**
May Include Estimated Values													
Unloaded Vehicle Weight (lbs.)	3,700	3,565	3,485	4,215	4,600	4,225	4,795	5,655	5,880	6,275	5,240	5,250	5,020
Dry Hitch Weight (lbs.)	430	405	400	550	515	525	625	770	770	755	845	775	845
Gross Vehicle Weight Rating (GVWR)	4,900	4,450	4,475	4,900	6,250	5,850	6,750	7,500	7,500	7,600	7,500	7,600	7,500
Cargo (Gross)	1,200	885	990	935	1,650	1,625	1,955	1,845	1,690	1,325	2,260	2,350	2,480
Exterior Length (Overall)	22' 2"	22' 4"	22' 11"	23' 7"	23' 8"	24' 6"	29' 6"	30' 1"	30' 8"	33' 10"	28' 4"	30' 0"	30' 5"
Exterior Height	10' 7"	10' 7"	10' 4"	10' 2"	11' 1"	10' 7"	10' 7"	11' 0"	11' 1"	11' 2"	10' 6"	12' 5"	11' 1"
Exterior Width	8' 0"	8' 0"	8' 0"	8' 0"	8' 0"	8' 0"	8' 0"	8' 0"	8' 0"	8' 0"	8' 0"	8' 0"	8' 0"
Exterior Width (Slides Out)	10' 1"	N/A	N/A	10' 6"	9' 5"	N/A	N/A	11' 0"	11' 0"	11' 0"	N/A	N/A	N/A
Interior Height	6' 9"	6' 9"	6' 9"	6' 9"	6' 9"	6' 9"	6' 9"	6' 9"	6' 9"	6' 9"	6' 9"	8' 4"	6' 9"
Fresh Water Capacity (Gal.) (Eastern Built)*	N/A	26	26	26	48	48	48	48	48	48	48	48	48
Fresh Water Capacity (Gal.) (Western Built)*	36	N/A	36	36	90	90	90	90	90	90	90	90	90
Gray Waste Water Capacity (Gal.)	19.9	19.9	19.9	39	39	39	39	39	32.5	39	39	39	39
Black Waste Water Capacity (Gal.)	19.9	19.9	19.9	39	39	39	39	39	32.5	39	39	39	39
LP Capacity (lbs.)	20	20	20	20	60	60	60	60	60	60	60	60	60
Tire Size	15"	15"	14"	15"	14"	14"	14"	14"	14"	14"	14"	14"	14"
Awning Size	11'	13'	13'	16'	12'	13'	18'	19'	16'	18'	16'	18'	16'

\*Includes Water Heater

\*\*Specifications, weights, measurements, and capacities above are from model year 2023 and are estimates only for model year 2024. Actual specs, weights, measurements, and capacities may be different for model year 2024 than what is listed above. For the most up-to-date model year 2024 specs, please speak with your local Highland Ridge dealer, visit <http://www.HighlandRidgeRV.com>, and check the yellow sticker on the door of your Highland Ridge RV before purchasing, operating, and towing the RV.

† Only available in Western United States and Western Canada

‡ Only available in Eastern United States and Eastern Canada

TO LEARN MORE VISIT  
[openrangerv.com](http://openrangerv.com)



Highland Ridge RV – Part of the Jayco Family of Companies



LOCAL DEALER INFO



Due to continual research and advances, manufacturer reserves the right to change specifications, design, price, and equipment without notice, and assumes no responsibility for any error in the literature. Some items shown are not included as standard or optional equipment. 2032619.2024