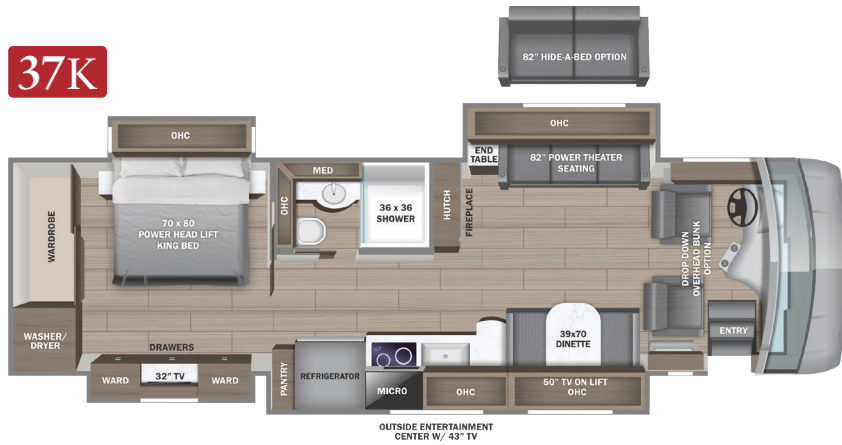
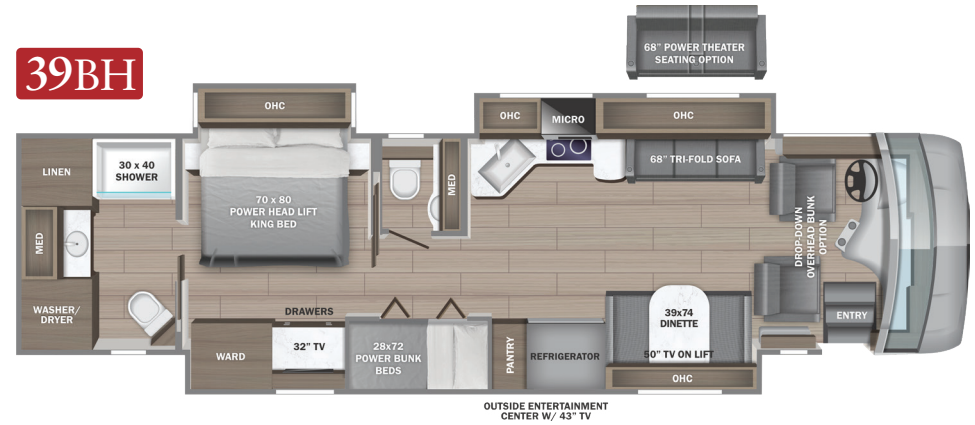


2024 REATTA XL

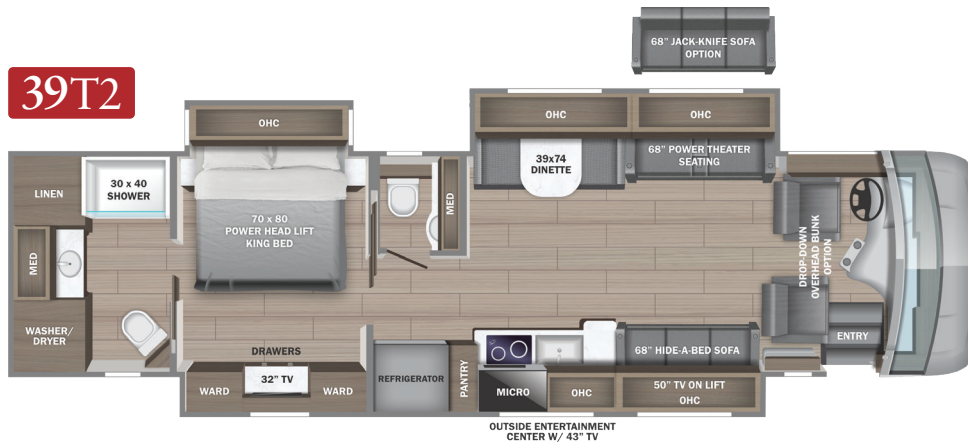
37K



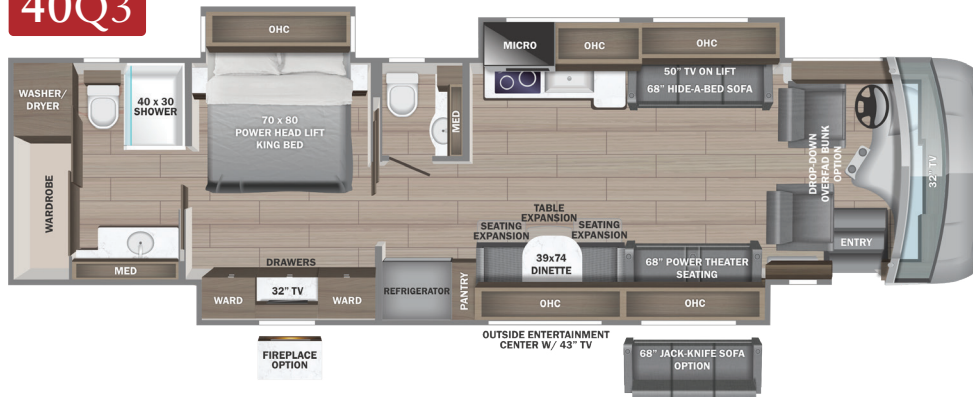
39BH



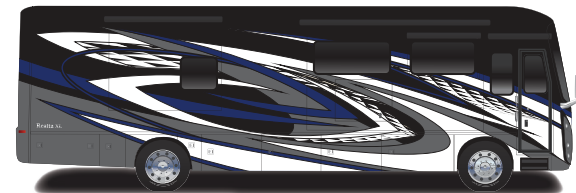
39T2



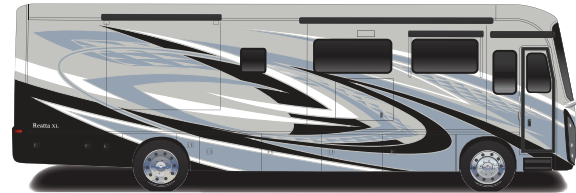
40Q3



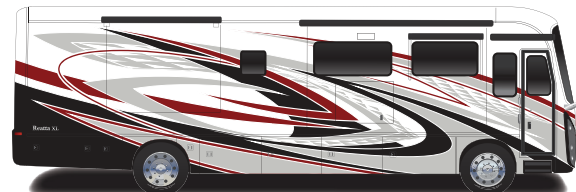
PAINT SELECTIONS



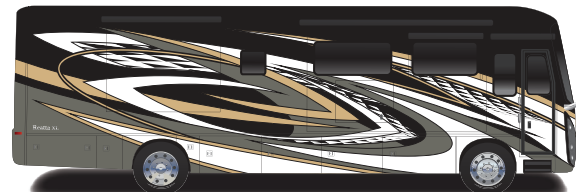
Blue Pearl



Coral Mist



Red Mist



Sahara Sands

CHASSIS

Spartan® K2 raised-rail chassis
Cummins® L9 turbocharged 380 HP engine with 1,150 lb.-ft. torque at 1,400 RPM
Allison® 3,000 MH 6-speed transmission
Rear-mounted radiator
170 amp alternator
1,000W engine block heater
Variable geometry turbo (VGT) engine brake
Independent front air suspension (IFS) front axle - 14,320 lb. rating
Rear axle - 22,000 lb. rating
4.88 rear axle ratio
Michelin® 275/80R 22.5 in. tires
Bilstein® 46mm shocks
Wireless tire pressure monitoring system (TPMS) with temperature monitoring
Equalizer™ hydraulic automatic coach leveling
Remote air connection
(2) 12V chassis batteries
100 gal. fuel tank
10 gal. DEF tank
Spartan® Safehaul tow vehicle air brake system
10,000 lb. hitch with 7-pin plug

CONSTRUCTION

Roof: One-piece fiberglass with 3/8 in. plywood decking, 4 in. arched aluminum trusses, insulation and reflective Flexfoil® (R-24)
Side walls: Vacuum-bonded, high-gloss gelcoat with R-8 bead-foam insulation
Floors: Vacuum-bonded layers of Darco underbelly, a welded aluminum frame, R-9 bead-foam insulation, 3/8 in. Structurwood® and 1/4 in. plywood
X-Bridge™ bracing welded into chassis frame
Heated basement storage
Insulated front and rear caps (R-24)
Electric-powered slideout rooms

HEAT, A/C, WATER, AND POWER

Onan® 10,000W diesel generator, with automatic start, on slide-out tray
2,000W pure sine wave inverter with 100 amp battery charger
(2) L16 AGM batteries (6V/390 amp hrs. ea.)
50 amp power cord on electric powered reel
Automatic transfer switch with surge protection
(2) 200W Go Power!® solar panels
(3) 15,000 BTU A/C units with heat pumps [(2) 15,000

BTU units with heat pumps on 37K]
Aqua-Hot® 250D hydronic water and heating system with 5 in. LED screen
Electric radiant floor heating system
LED-lit fireplace with 5,000 BTU heating element (37K only)
Sani-Con® macerator holding tank dump system with manual gate valves and manual backup
Black tank flush
Grey tank flush
City and tank water filtration system
Hot and cold water hook-up in front cap area with 30 ft. quick-disconnect hose

EXTERIOR

Carefree® power patio awning with LED lights
Carefree® power entrance door awning with LED lights
Carefree® slideout awnings
Carefree® window awnings
Frameless, dual-pane, tinted, safety-glass windows
Grab handle and keypad system for keyless entry
43 in. Samsung® 4K UHD Smart TV with tilt, swivel, and extend adjustment
JBL® radio and speakers with USB port and receptacle
LED accent lights under all slideout rooms
Heated, remote-control, side-view mirrors with integrated cameras
Diamond Shield™ front protective film mask
LED high and low beam headlights
Halogen fog lights
Automatic daytime running lights
LED marker lights, turn lights, license plate light, third brake light, accent lights and docking lights
Porch light
Mudflap with chrome "Entegra" nameplate
Winegard® TRAV'LER satellite dish DIRECTV® - standard with USA option
Winegard® TRAV'LER Pro satellite dish Shaw TV - standard with CSA option
Winegard Connect 2.0 Wi-Fi/4G antenna
Exterior utility center
Slideout basement storage tray
Sikkens custom full-body paint

COCKPIT

Valid™ 15 in. digital dash with quad core graphics processor, on-board diagnostics, selector knob and ability to display traditional instrument cluster, 360° camera system or GPS navigation
Xite™ 360° HD digital camera system
Xite™ XSG4 infotainment system with 9 in. touchscreen, iGO navigation, Bluetooth®, Sirius XM™ and AM/FM tuner, integrated camera control and house mode whole-coach audio distribution
Leather-wrapped steering wheel with integrated controls for cruise, rain-sensing wipers, radio and Bluetooth® phone functionality
Manual tilt and telescoping steering column
Ultra-Vision® one-piece wrap-around tinted windshield
Rain-sensing windshield wipers
32 in. Samsung® LED 1080P Smart TV in front overhead
6-way power adjustable driver and passenger seats with power recline
Powered flush stepwell cover
Powered adjustable brake and accelerator pedals
Powered front sun visors and privacy shades

INTERIOR

Firefly multiplex system with 10 in. VegaTouch touchscreen for complete integration of coach controls (mobile app available)
50 in. Samsung® 4K UHD Smart TV
Samsung® sound bar with subwoofer
Sony® Blu-ray™ player
Premium furniture
Hand-laid, woodgrain porcelain tiled floors
LED interior lighting
Decorative ceiling feature with integrated accent lighting
Manual solar day shades and blackout night shades
Central vacuum system
Removable screen on entry door

KITCHEN

Window with push out lever operation and screen
Stainless steel residential refrigerator with ice maker and water dispenser
Induction cooktop
1.5 cu. ft. convection microwave oven
Solid-surface countertops with stainless steel sink
Filtered water dispenser at kitchen sink
Fan-Tastic power exhaust fan with intake
Slide-out storage tray(s) in overhead cabinet

BEDROOM

King-size pillow-top mattress on tilt bed
32 in. Samsung® LED 1080P Smart TV
Sony® Blu-ray™ player
Bunks with industry-exclusive 300 lb. capacity each (39BH)

BATHROOM

Solid-surface countertops with integrated sink
One-piece fiberglass shower with skylight
Aqua View SHOWERMISER™ water saving system
Thetford® Aqua Magic toilet with foot flush
Fan-Tastic power exhaust fan with intake
Separate washer and dryer

SAFETY

Carbon monoxide detector
Smoke alarm
Storage safe

OPTIONS

Canadian standards (CSA)
Theater seating with power recliners (39BH)
Theater seating with power recliners
34 in. bedroom fireplace (40Q2)
Winegard® in-motion satellite dome
Winegard® TRAV'LER satellite dish Dish Network®
Drop-down overhead bunk in cab area with 750 lb. capacity
Starlink satellite internet

WARRANTY

2+3
YEAR LIMITED | YEAR STRUCTURAL
WARRANTY

NO ONE OFFERS A BETTER WARRANTY

At Entegra Coach, we build our RVs to handle every adventure, then back them with our industry-leading 2+3 limited warranty. Our 2-year limited warranty has you covered for 2 camping seasons. That's 730 days. In addition, our 3-year structural limited warranty has you covered for 3 camping seasons or 1,095 days. You won't find a better limited warranty in the business, because the only strings we attach are those that deliver the ultimate in reliability. For a copy of our 2-year limited + 3-year structural limited warranty with complete terms and conditions, please contact your local Entegra Coach dealer.

Floorplan	GVWR (lbs.)	GCWR (lbs.)	Front GAWR (lbs.)	Rear GAWR (lbs.)	Tag GAWR (lbs.)	Wheel Base	Overall Length	Exterior Height w/ A/C & Satellite	Exterior Width	Interior Height	Fresh Water Capacity (gal.)	Grey Waste Water Capacity (gal.)	Black Waste Water Capacity (gal.)
37K	36,320	46,320	14,320	22,000	N/A	230"	37' 10"	12' 10"	101"	84"	100	62	41
39BH	36,320	46,320	14,320	22,000	N/A	255"	39' 11"	12' 10"	101"	84"	100	62	41
39T2	36,320	46,320	14,320	22,000	N/A	255"	39' 11"	12' 10"	101"	84"	100	62	41
40Q3	36,320	46,320	14,320	22,000	N/A	267"	40' 11"	12' 10"	101"	84"	100	62	41

It is important for your safety and enjoyment that you are aware of the weights and tow ratings of the RV you select. Consult a competent advisor for questions or advice. Whether you are new to RVing or a veteran, get a feel for the performance of your RV before heading out on the roadways. When you tow a vehicle with your RV, you must drive differently than when you drive a single vehicle. Practice hooking up, driving, backing up and braking in a safe environment or seek out professional instruction. Jayco affixes a weight label to each RV which lists weight information for that vehicle. Refer to that label to verify the vehicle will meet your requirements. Gross Vehicle Weight Rating (GVWR): The maximum permissible weight of the motorhome, including the Unloaded Vehicle Weight (UVW) plus passengers, personal items, all cargo, fluids, options and dealer-installed accessories. The GVWR is equal to or greater than the sum of the UVW and the Cargo Carrying Capacity. Gross Combined Weight Rating (GCWR): The maximum allowable combined weight of the motorhome used as a tow vehicle and the attached towed vehicle.



Part of Jayco Family of Companies

Entegra Coach, Inc., P.O. Box 460, Middlebury, IN 46540, www.entegracoach.com. See dealer for further information and prices. All information in this brochure is the latest available at the time of publication approval. Entegra Coach reserves the right to make changes and to discontinue models without notice or obligation. Photos in this brochure may show optional equipment and props for photography purposes. RVs built for sale in Canada may differ to conform to Canadian codes. ©2023 Entegra Coach, Inc. Printed in U.S.A. 2032655



entegracoach.com/reatta-xl