



**AIRSTREAM**<sup>®</sup> Interstate 24GT

2024 TOURING COACHES

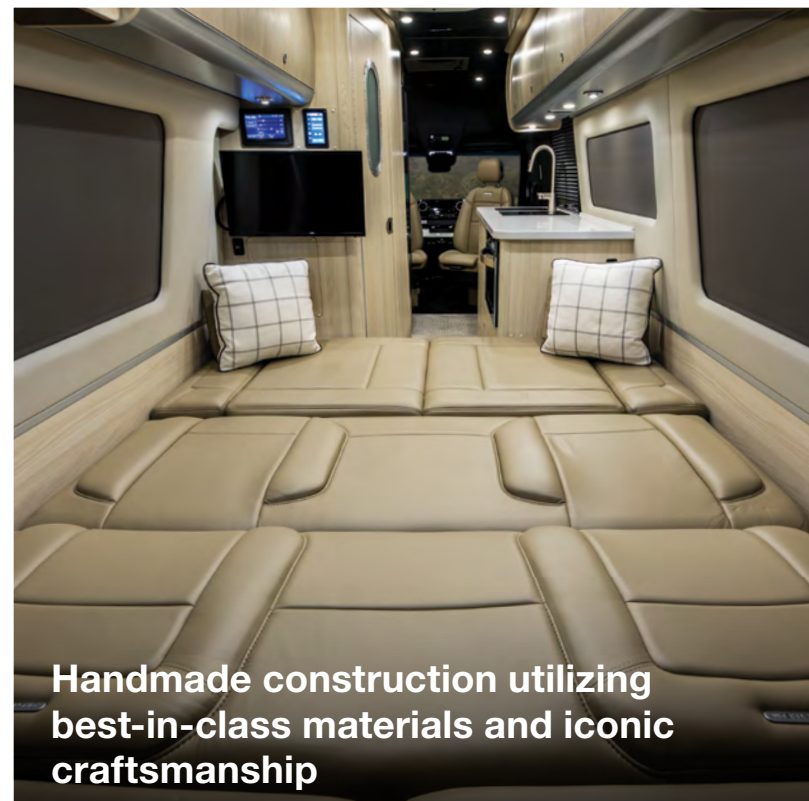


## About Interstate 24GT

With Mercedes-Benz® power and performance under the hood and Airstream's legendary handmade craftsmanship inside, the Interstate 24GT is built for couples and solo travelers who want a premium travel experience. Hit the road for a multi-week odyssey or head south in style for the winter: the Interstate 24GT was designed to be as versatile as your travel plans. With comfort and dependability at the top of the list, Interstate 24GT delivers all the comforts of home – in abundance.

From the large galley and spacious sleeping quarters to the cleverly appointed on-board bathroom, Interstate 24GT is made for the grand tour that inspired its GT namesake. With belted seating positions for up to seven people and sleeping space for two, you can bring along friends for a day trip or hit the road with a loved one for the road trip of a lifetime. We load up the Interstate 24GT with every available safety and performance feature offered by Mercedes-Benz – and we include them as standard, not upgrade options. With an Interstate 24GT, you're traveling in the very best of safety, performance, interior design, comfort, and efficiency every time you hit the road.

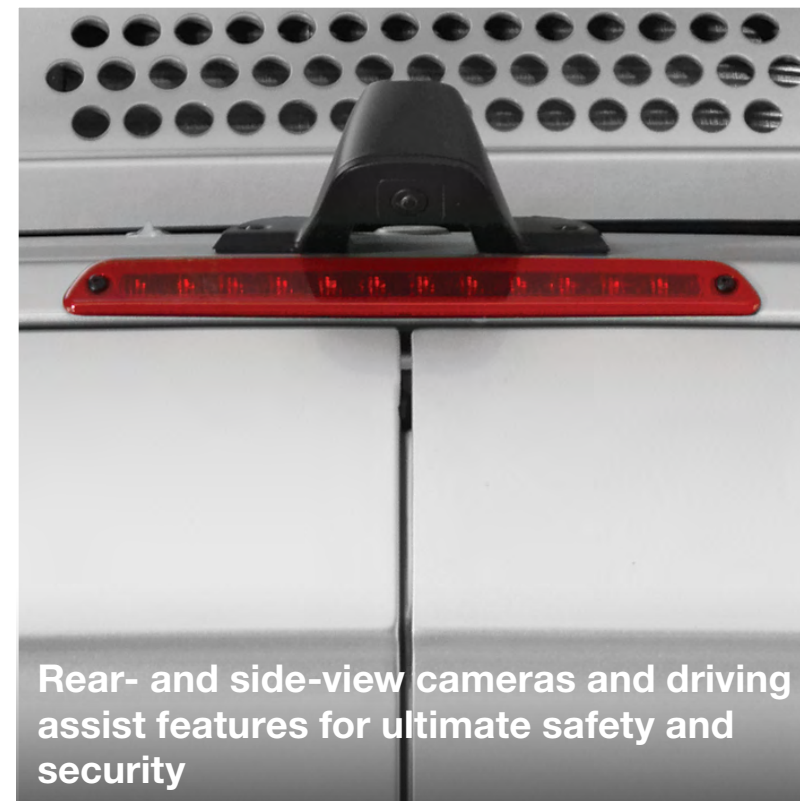
Once you arrive at your destination, conveniences like a full kitchen, an onboard bathroom, charging stations, and two smart flatscreen TVs let you enjoy your time in comfort and style. Swivel the captain's chairs around and catch up on emails at the handy work station. Prepare snacks and drinks on solid surface countertops in the galley. Store accessories in the European-style curved cabinetry. Relax on plush, easy-to-clean Ultraleather™ seating surfaces. No matter where you turn, the Interstate 24GT is ready to impress.



Handmade construction utilizing best-in-class materials and iconic craftsmanship



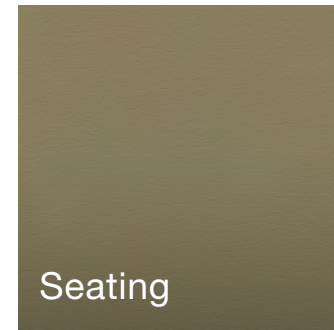
Solid surface countertops, fine Italian wood cabinetry, and luxurious sleeping quarters



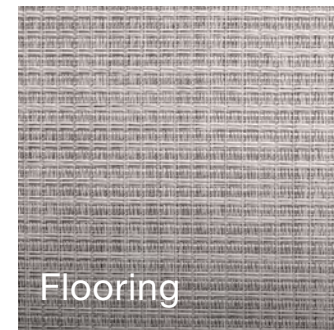
Rear- and side-view cameras and driving assist features for ultimate safety and security

# Décors

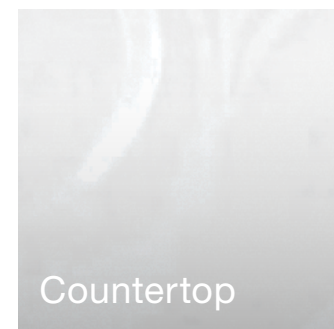
“It's only 24 feet, but the bright and airy interior makes it feel much bigger than it actually is.”  
**SOPHIA** Interstate 24GT Owner



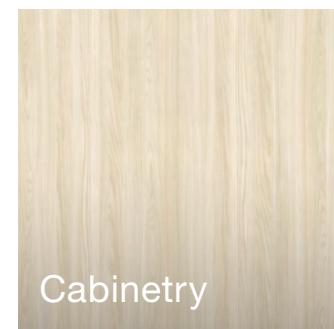
Seating



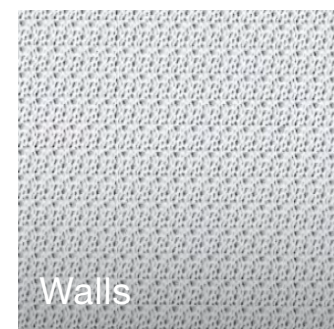
Flooring



Countertop

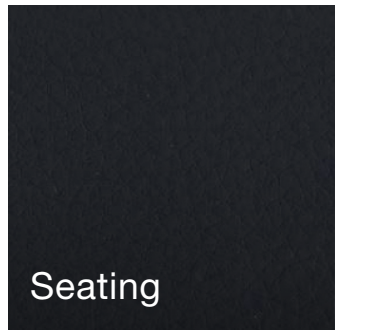


Cabinetry

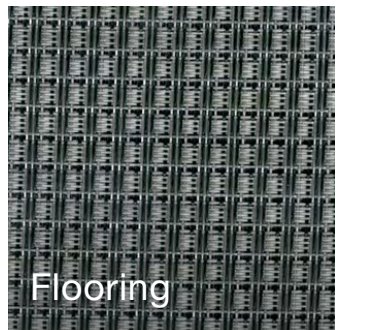


Walls

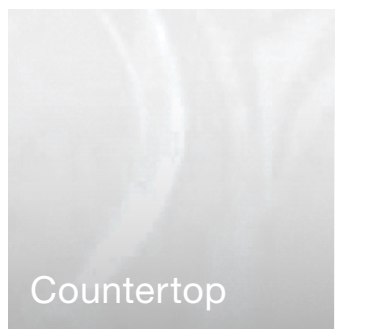
## Classic Canyon



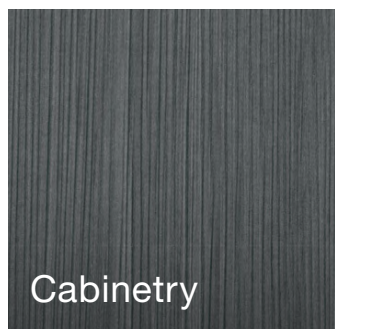
Seating



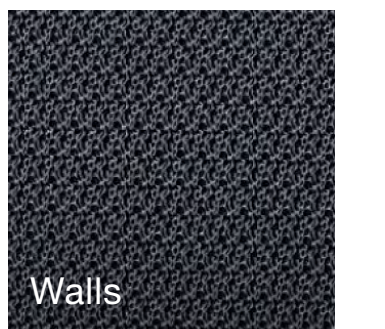
Flooring



Countertop



Cabinetry

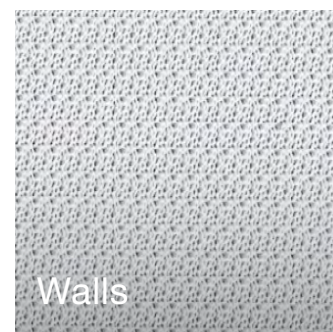
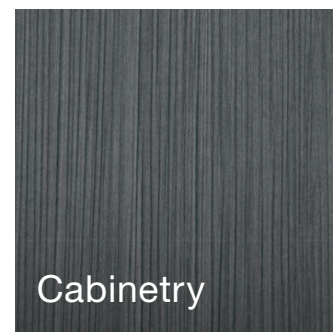
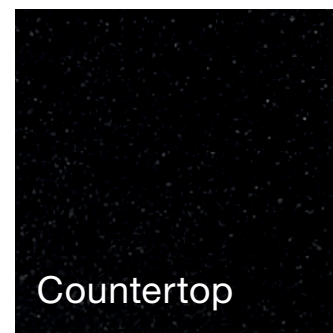
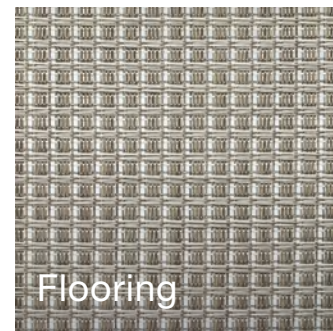
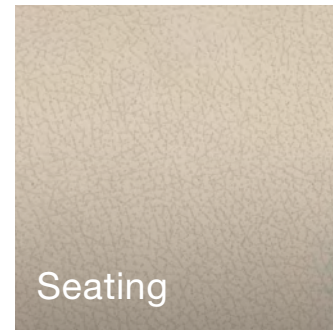


Walls

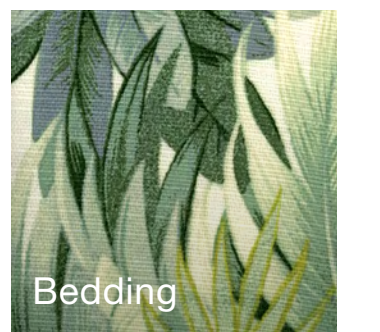
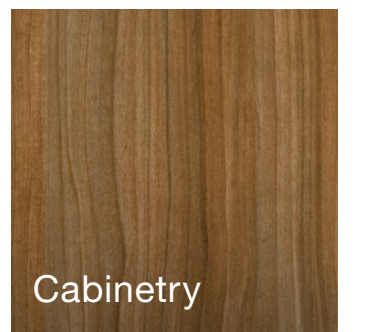
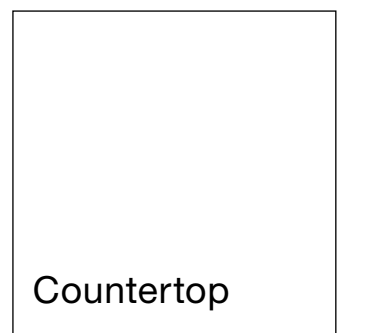
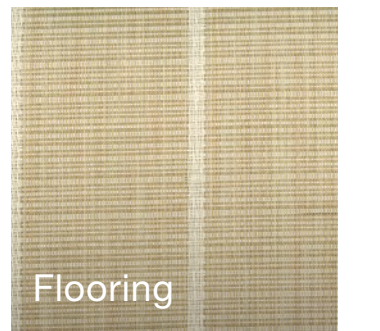
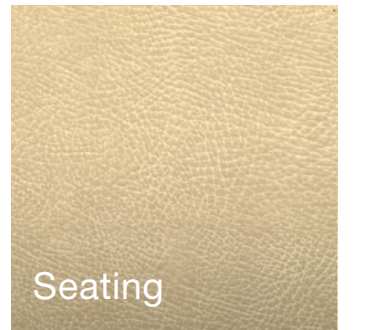
## Formal Black

# Décors

“ I never thought I would love such a luxurious décor, but every time I step inside it really takes my breath away.” **MARK** Interstate 24GT Owner



Modern Greige



Tommy Bahama Special Edition



## Exterior Colors



Tenorite Grey Metallic

(AWD only)

Elegant, understated and ready to roam



Iridium Silver Metallic

Exquisite, prestigious, and gracefully distinguished



Classic Canyon Décor Shown



## Floor Plan

In its standard configuration, the Interstate 24GT has belted seating positions for seven passengers. Front captain's chairs swivel to face a convenient work station on the street (driver's) side. A central galley features a two-burner cooktop and deep sink for preparing everything from a gourmet meal to healthy snacks while en route. Across the aisle a wet bath makes for an efficient use of space, with a showerhead that doubles as a faucet, a mirror that extends and swivels, and a totally waterproof toilet paper cover.

The rear of the Interstate 24GT is anchored by a wide seating area for up to five people around a central table. The seating area converts at the push of a button to a spacious sleeping area. Overhead lockers provide ample space to store dishware, food, bedding, and everything you need to make your journey complete. Behind the seating, rear doors swing open to reveal more storage and a clever table system that's perfect for outdoor entertaining.

# Exterior Features

Built on the powerful performance of the legendary Mercedes-Benz Sprinter van chassis, the Interstate 24GT is packed with exterior features that prioritize entertaining, camping, and enjoying the outdoors. The sliding door automatically opens and a powered step extends for easy entrance. Premium Air Ride Suspension provides the smoothest ride available, while two 100 Ah deep cycle lithium batteries, roof-mounted solar panels, and enhanced power system components ensure you have the power you need for the road ahead.



**1** 400 watts of solar panels on the roof harvest the free, abundant power of the sun.



**2** The powered awning extends and retracts at the push of a button.



**3** The optional E1 Package upgrade combines an enhanced energy system with a convenient single-fuel-source heating and hot water system.



**4** Air Ride Suspension handles bumps in the road, changes in elevation, and wind resistance for the smoothest ride possible.



**5** Safety sensors positioned around the exterior of the coach give you comprehensive situational awareness.



**6** Mercedes-Benz® performance under the hood is anchored by a powerful and efficient diesel engine.

# Chassis Options

## 4X2

Chassis	Mercedes-Benz® Sprinter 3500 Extended
Engine	Mercedes-Benz® 3.0LV6 Turbo Diesel
Horsepower/Torque	188 HP @ 3800RPM/ 325 lbs torque @1400-2400RPM
Transmission	7G-TRONIC Plus Automatic
GVWR/GCWR	11,030 lbs/15,250 lbs
UWV****	9,335 lbs
OCCC****	1,695 lbs
Tow Capacity**	Up to 5,000 lbs
Overall Height	9 ft. 7 in. (inc. A/C & Antenna)

## 4X4

Chassis	Mercedes-Benz® Sprinter 3500 Extended
Engine	Mercedes-Benz® 3.0LV6 Turbo Diesel
Horsepower/Torque	188 HP @ 3800RPM/ 325 lbs torque @1400-2400RPM
Transmission	7G-TRONIC Plus Automatic
GVWR/GCWR	11,030 lbs/15,250 lbs
UWV****	9,735 lbs
OCCC****	1,295 lbs
Tow Capacity**	Up to 5,000 lbs
Overall Height	9 ft. 9 in. (inc. A/C & Antenna)

## AWD

Chassis	Mercedes-Benz® Sprinter 3500 Extended All Wheel Drive
Engine	Mercedes-Benz® 2.0L 4-Cylinder High Output Diesel
Horsepower/Torque	211 HP @ 3,600 RPM 332 lb-ft torque @ 1600 - 2400 RPM
Transmission	9G-TRONIC Plus Automatic
GVWR/GCWR	11,030 lbs/15,250 lbs
UWV****	9,735 lbs
OCCC****	1,295 lbs
Tow Capacity**	Up to 5,000 lbs
Overall Height	9 ft. 9 in. (inc. A/C & Antenna)





# Specifications

Emissions	BlueTEC SCR Technology, 50 State – EPA/CARB Standards
Axle Ratio	3.92 / 4.727 AWD
Wheelbase	170"
MPG*	16-18 Estimated Highway
Tow Package	Mercedes-Benz® Hitch, 7 Pin Trailer Plug, Brake Control Pre-wired
Trailer Safety System	Mercedes-Benz® Trailer Stability Assist System
Overall Length	24 ft. 6 in.
Overall Width	6 ft. 7.7 in.
Interior Height/Width	6 ft. 2.25 in. / 5 ft. 10 in.
Tank Capacities	23 gals (Fresh), 24 gals (Grey), 11 gals (Waste)
LPG	14.6 gals (61.8 lbs) 80% fill
Diesel Fuel	24.5 gals
Air Conditioner	13,500 BTU
Furnace	16,000 BTU
Water Heater	60,000 BTU On-Demand Continuous Flow
Heated Tanks	Fresh and Grey Tanks (12 volt)
Refrigerator & Freezer	5.0 cu. ft. Fridge/1.6 cu. ft. Freezer (12 volt)
Microwave	1.2 cu. ft. Drawer Microwave
Cooktop	2 Burner with Integrated Cover
Safety Components	LP Gas Detector, Smoke and CO <sub>2</sub> Alarm, Fire Extinguisher and First Aid Kit
Plumbing System	Macerator Pump System
TV Antenna	Directional In-motion VHF/UHF
TV Cable	Cable TV Outlets/Hook-ups
TV Satellite	Pre-wired for Satellite Dish
Connected 5G Antenna	Pre-wired for Airstream Connected
Electrical System	Touch Screen/Touch Pad Electronic Controls with Energy Management

Converter/Inverter	50 amp Multi-stage Charger, 1,000 Watt Pure Sine Inverter
Generator	2.5 kW (LPG) with Auto Start and Ultra Quiet Resonator
Batteries (Coach)	2 – 100 Ah Deep Cycle Lithium Batteries (LiFePO4)
Shore Power	30 amp/110 Volt Service
Solar Power	400 Watt Total (100W Chassis / 300W House)
E1 Package	OPT
Hydraulic Leveling Jacks	OPT
Front Bed System	OPT
Support	3 Year 24/7 Coach-Net® Roadside Assistance
Warranty***	3 Years/36,000 Miles Airstream 3 Years/36,000 Miles Mercedes-Benz® 5 Years/100,000 Miles Mercedes-Benz® Engine (Chassis specs may vary, contact your Airstream Dealer)

## Safety

Multiple Safety Air Bags	STD
Active Brake Assist	STD
Active Lane Keeping Assist	STD
Active Blind Spot Assist	STD
Active Distance Assist - Distronic Plus	STD
Active Driver Attention Assist	STD
Active Rear Cross Traffic Assist	STD
E-Call Assist	STD
Traffic Sign Assist	STD
Front & Rear Parktronic Parking Assist	STD
Wet Wiper System	STD
Rear Camera Assist	STD

## Cockpit

Power Adjustable Heated Driver/Passenger Seats	STD
Tilt & Telescopic Leather Steering Wheel	STD
Advanced Multifunctional Steering Wheel	STD

Push Button Keyless Start	STD
Steering Wheel Paddle Shifters	STD
Entry Door Lighting	STD
In-Dash Wireless Cell Phone Charging	STD
Overhead Map Lights	STD
In-Dash Maintenance Monitoring System	STD
MBUX Infotainment System (Mercedes-Benz User Experience) touch screen, pinch, zoom, voice recognition, Apple Carplay®, Android® capability	STD
Rear & Side View Camera Monitor	STD
Cockpit Carpet Floor Mats	STD
Privacy Shades	STD

## Exterior

Full Body Kit	STD
3M® Protective Film Rear Bumper	STD
Hidden Hitch Cover Rear Bumper	STD
Fog Lamps	STD
Alcoa® DuraBright Aluminum Wheels	STD
High Performance Headlights	STD
Power Heated Mirrors	STD
Power Armless Awning w/Auto Retract	STD
Power Entry Step (sliding side door)	STD
LED Lighting - patio, service box locations, adjustable awning, under carriage	STD
Locking Service Boxes	STD
Exterior Shower with Hot & Cold Water	STD
LP Accessory Hook-up (Grill)	STD
Power Rear Screen	STD
110 V Outlet	STD
Air Ride Suspension	STD
Side Screen Door	STD
Power Sliding Door	STD

## Main Cabin

Signature Aluminum Ceiling & Trim	STD
Matte Finish Laminate Cabinetry	STD
Flush-Mount & Solid Shut Cabinets	STD
Ultraleather™ Seating	STD
Vinyl w/Urethane Covering on Walls & Windows	STD

Power Window Shades	STD
Built-in Work Station	STD
Riveted Aluminum Porthole Door	STD
Pantry with Built-in Drawers and Shelves	STD
Marine Woven Synthetic Flooring	STD
Adjustable LED Lighting	STD
Modular Solid Surface Table (1)	STD
LED Widescreen SMART HDTVs (2)	STD
Power Rear Sofa Converts to Lay Flat Bed	STD
Power Ottomans	STD
USB Charging Ports	STD
Exhaust Fan with Rain Sensor	STD
Rear Cabin Carpet Kit (Black)	STD

## Bathroom (Wet Bath)

Toilet	STD
Shower	STD
Sink with Articulated Mirror	STD
Riveted Aluminum Porthole Door	STD
Retractable Clothes Line	STD
Towel Rack	STD

## Galley

Solid-surface Countertop with Backsplash	STD
Waste Basket & Paper Towel Holder (built-in)	STD
Sink with Integrated Cover	STD
Cooktop with Integrated Cover	STD
Under Counter Lighting	STD

\* Actual mileage may vary due to load, driving style, and overall conditions.

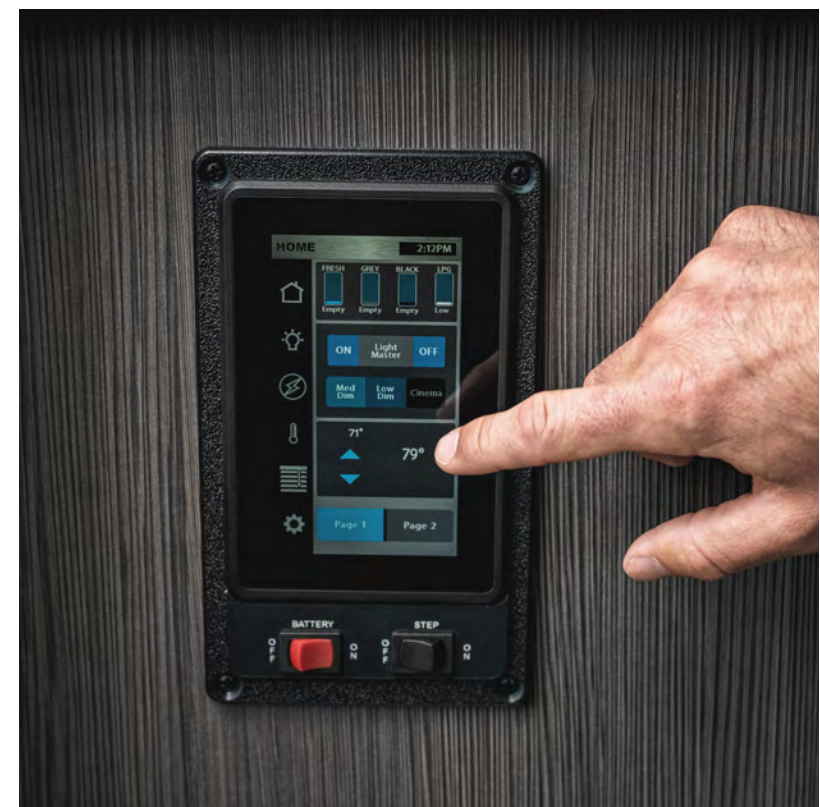
\*\* Typical tow capacity will vary and is dependent upon build spec and intended vehicle loading with people, cargo, and fluids.

\*\*\* New Vehicle Limited Warranty. Individual components may vary. See Owners Manual for specific warranty coverage and information.

\*\*\*\* Weights are approximate. See Vehicle Sticker for specific vehicle information.

# Why You'll Love It

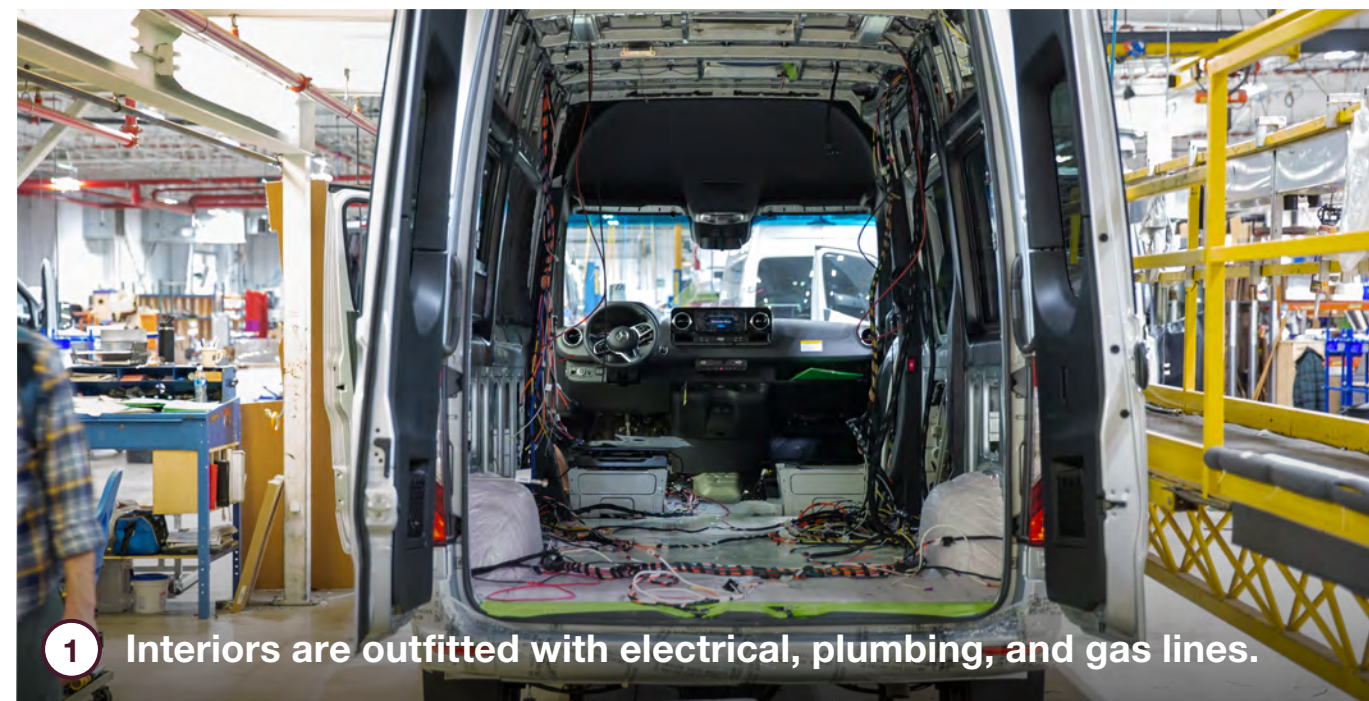
- You've spent your life dreaming of a grand adventure – now make that adventure a reality in the Interstate 24GT.
- Built as much for weeks-long trips as it is for the journey south in the winter, the Interstate 24GT is made for couples who want to travel in sumptuous, functional style.
- Air Ride Suspension ensures a smooth ride no matter the road conditions.
- Sliding and powered screens throughout the coach let you open windows to let fresh air flow freely through the interior.



# How It's Made

Each Mercedes-Benz Sprinter van chassis arrives in Jackson Center, Ohio fully loaded with safety and security features and one of the most powerful and dependable engines under the hood. Our expert craftspeople add external features like RV windows, vents, air conditioners, awnings, and undercarriage features like generators, holding tanks, and batteries. Standard seats are removed and re-upholstered with plush Ultraleather, while the interior is outfitted with electrical wiring harnesses, plumbing, gas lines, and insulation. We hand-craft every cabinet and storage locker in our woodshop, which are then installed alongside showers, beds, tables, and kitchen appliances. Every Airstream touring coach is put through an extensive water check to ensure there are no leaks before quality inspection teams test every component, system, and function before it goes out the door to a customer.

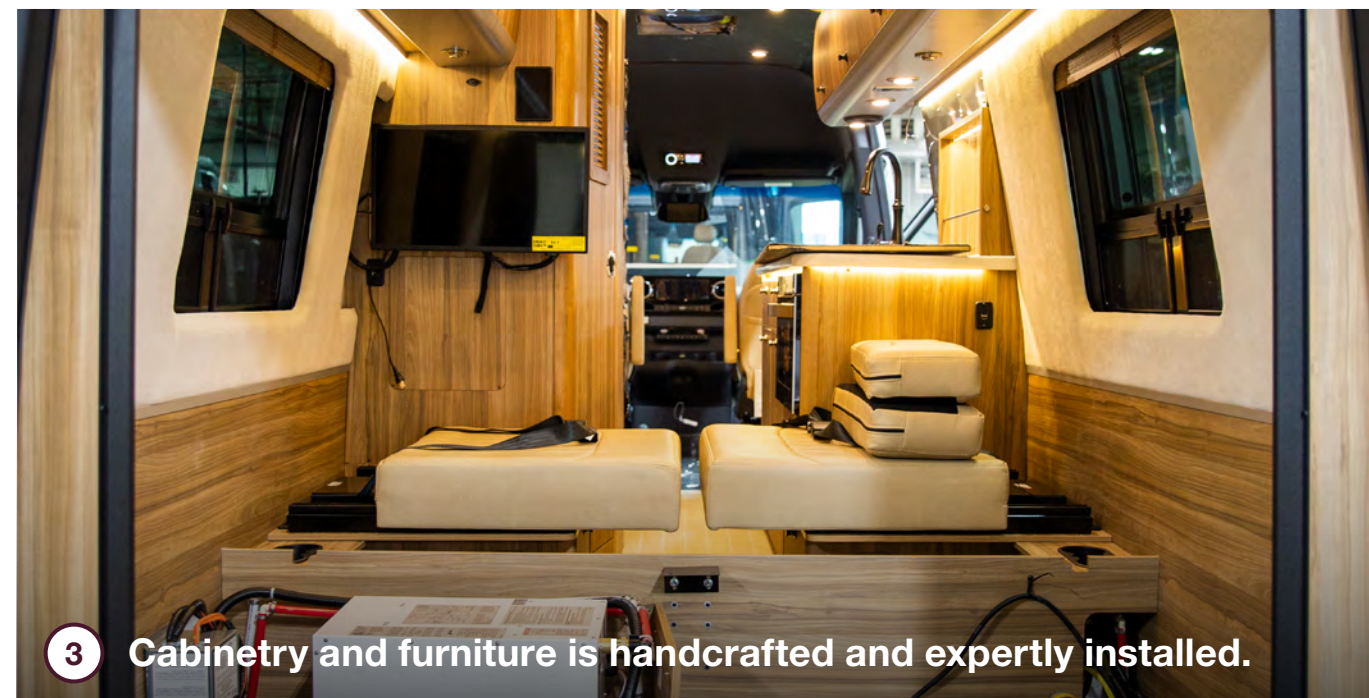
[Schedule a factory tour](#)



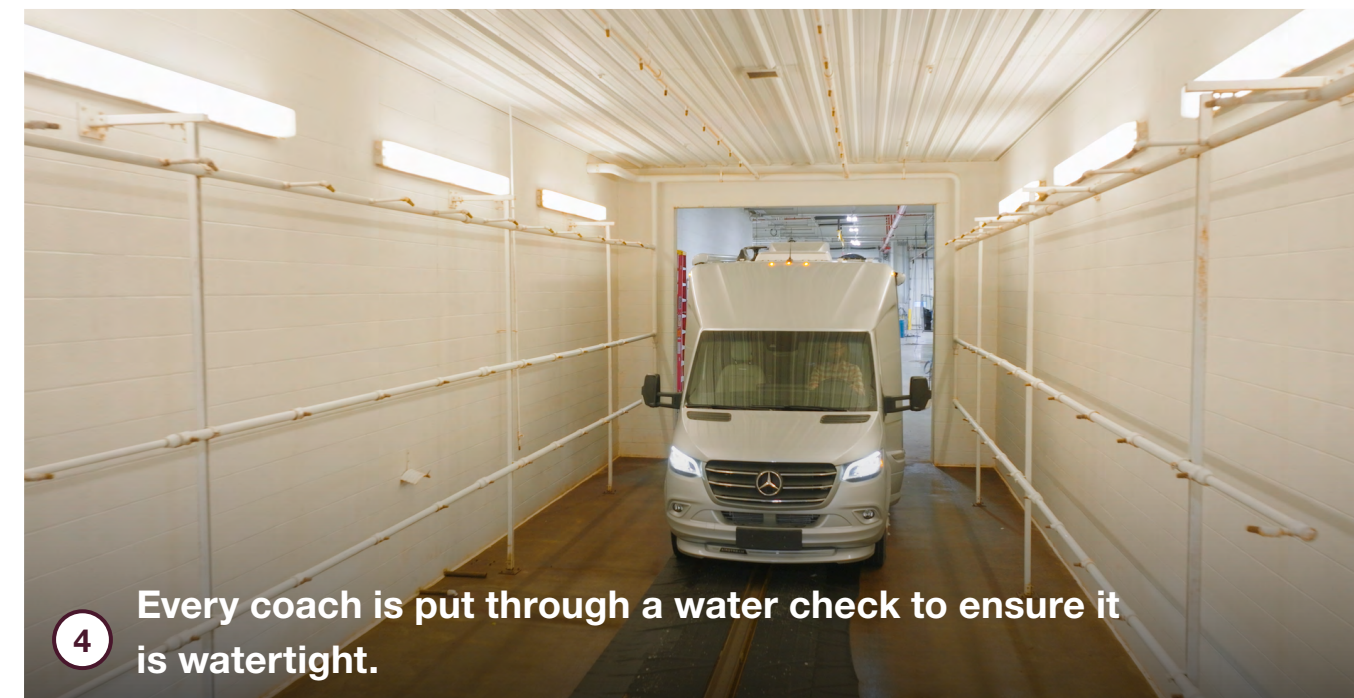
1 Interiors are outfitted with electrical, plumbing, and gas lines.



2 Seating is upholstered in-house with Ultraleather fabric.



3 Cabinetry and furniture is handcrafted and expertly installed.



4 Every coach is put through a water check to ensure it is watertight.



419 West Pike Street,  
P.O. Box 629  
Jackson Center, OH  
45334 USA  
937-596-6111

[www.airstream.com](http://www.airstream.com)

# AIRSTREAM<sup>®</sup> + Mercedes-Benz<sup>®</sup>

## Roll with the Best<sup>®</sup>

Product information, specifications, and photography in this brochure were as accurate as possible at time of printing. Photographs may contain some features that are optional on your vehicle.

Since we continually strive to improve our products, actual products may differ. Prices and specifications are subject to change without notice. All capacities are approximate and dimensions are nominal. Some features or options may be different or unavailable in other countries.

Warning – This information is intended as a guide only. Weights of individual vehicles may vary. Consult your owner's manual for complete loading, weighing, and towing instructions. Do not overload the travel trailer.

AIRSTREAM<sup>®</sup>, the Airstream travel trailer trade dress, and all related model names, slogans, logos, trade dress, and trademarks are owned or used under license by Airstream, Inc. All other trademarks are owned by their respective owners.