

# OLD SCHOOL TRAILERS

1933 Eisenhower Dr. N, Goshen, IN 46526 | 574-537-1434 | info@theoldschooltrailer.com



## "OLD SCHOOL" TRAILERS, LLC

Combining the looks of yesterday with the features of today. With weights that range from 2,400 lbs. to 3,200 lbs., there is a unit available that can be towed with even the smaller SUVs.

We offer standard features that aren't even available as options on many other units: such as aluminum cage construction, the upgraded .030 metal, and power awnings on even our smallest camping trailers.

We have an experienced team who takes pride in the work they do and the product that is shipped and I share that same pride.

Hoping we can be part of your camping experience!

*Bob Taulbee*

"Old School" Trailers, LLC  
Goshen, IN

Thank you for your interest in

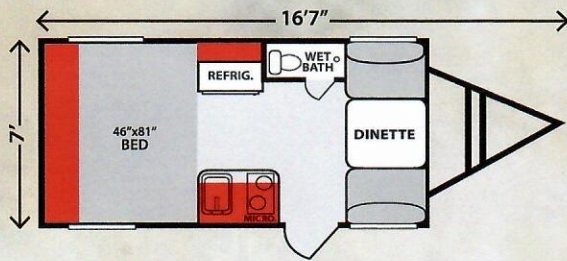
**OLD SCHOOL TRAILERS**

For additional information visit our website

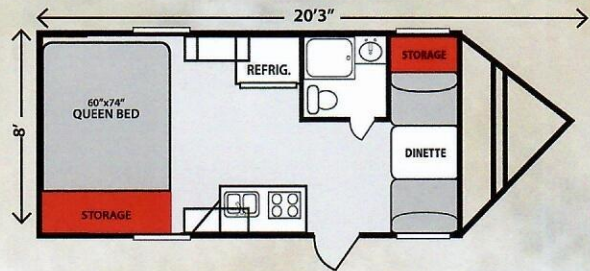
[www.theoldschooltrailer.com](http://www.theoldschooltrailer.com)

Dealer:

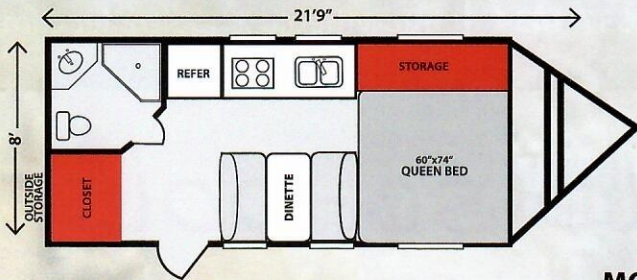
**MODEL 715**



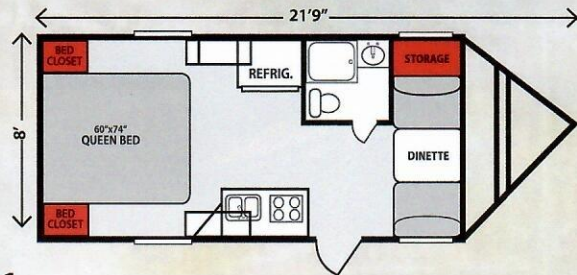
**MODEL 815**



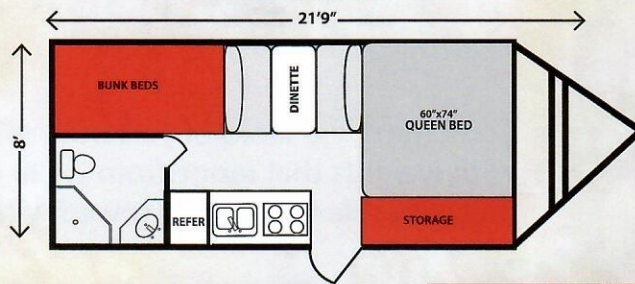
**MODEL 818**



**MODEL 820**



**MODEL 821**



**SPECIFICATIONS**

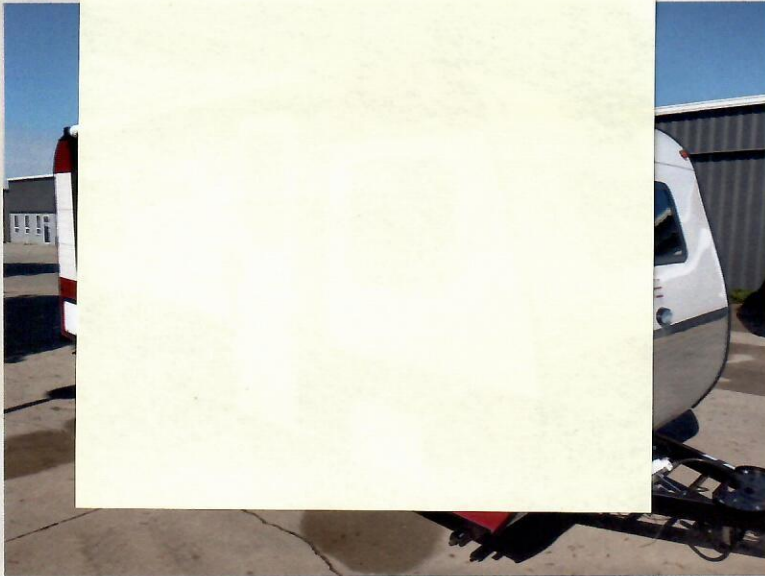
MODEL	715	815	818	820	821
OVERALL LENGTH	16'7"	20'3"	21'9"	21'9"	21'9"
AVG. SHIPPING WT.	2440	3160	3160	3140	TBA
HITCH WT.	260	420	300	420	TBA
CARRYING CAPACITY	1320	1260	1140	1280	TBA
EXTERIOR WIDTH	7'	8'	8'	8'	8'
NUMBER OF AXLES	1	1	1	1	1
AXLES WT. RATING	3,500	4,000	4,000	4,000	4,000
TIRE SIZE	14"	15"	15"	15"	15"
FURNACE BTU	18,000	18,000	18,000	18,000	18,000
A/C BTU	13,500	13,500	13,500	13,500	13,500
FRESH WATER (GAL)	9	28	28	28	28
GREY WATER	32	32	32	32	32
BLACK WATER	13	32	32	32	32

**TRAILER FEATURES**

- ALUMINUM CAGE CONSTRUCTION
- .030 METAL
- LIPPERT FRAME
- 5/8" OSB FLOORING WITH DARCO
- 7/16" OSB ROOF DECKING
- DICOR ROOF
- 4,000 LBS. ON THE 815, 818 & 820;
- 3,500 LBS. ON THE 715
- 4 STABILIZER JACKS
- POWER AWNING
- 13,500 BTU A/C
- TV ANTENNA
- FIBERGLASS INSULATION
- OUTSIDE SHOWER
- 4" SQUARE BUMPER
- RADIAL TIRES: 14" ON 715; 15" ON 815, 818 & 820
- WHITE WALLS WITH PAINTED RIMS
- AM/FM STEREO
- TINTED WINDOWS
- MICROWAVE
- 2-BURNER COOK-TOP
- 3.2 CU. FT. REFER. IN 715; 6.0 CU. FT. REFER. IN 815, 818, 820 & 821
- WET BATH IN 715
- DRY BATH IN 815, 818 & 820
- HIGH SPEED ROOF VENT FAN IN BATHROOM
- 18,000 BTU FURNACE
- 6-GALLON GAS/ELECTRIC WATER HEATER
- USB PORTS

# OLD SCHOOL TRAILERS

1933 Eisenhower Dr. N, Goshen, IN 46526 | 574-537-1434 | info@theoldschooltrailer.com



## "OLD SCHOOL" TRAILERS, LLC

Combining the looks of yesterday with the features of today. With weights that range from 2,400 lbs. to 3,200 lbs., there is a unit available that can be towed with even the smaller SUVs.

We offer standard features that aren't even available as options on many other units: such as aluminum cage construction, the upgraded .030 metal, and power awnings on even our smallest camping trailers.

We have an experienced team who takes pride in the work they do and the product that is shipped and I share that same pride.

Hoping we can be part of your camping experience!

*Bob Taulbee*  
"Old School" Trailers, LLC  
Goshen, IN

Thank you for your interest in

**OLD SCHOOL TRAILERS**

For additional information visit our website

[www.theoldschooltrailer.com](http://www.theoldschooltrailer.com)

Dealer: