

2024 LUXURY MOTORCOACH

# S U P R E M E A I R E



S

A Super C that stands out from other Super Cs.

Not all Super Cs are equal—and the 2024 Supreme Aire is a world apart from all of them. With exclusive features you'll only find on Newmar Super Cs like a step-free aisleway and full air-ride cab, the amenities are next-level. And from coast to coast, in resorts or campgrounds, it's sure to turn heads.



Supreme Aire

# Freightliner® M2 112 Chassis



40'-45' / 4 floor plans

Detroit Diesel DD13  
12.8L Engine

525 HP

1850 lb./ft. torque

Kingston Full-Paint  
Masterpiece Finish™  
Exterior



# Cockpit

## Redesigned Dash\* and New Steering Wheel\*

### Air Ride Captain's Chairs

Lumbar Support with 12V Electric Controls

### Skylight

Power Shade

### Xite Dash Radio

9" Monitor  
Nav-N-Go Navigation  
Apple CarPlay®

## Harman/JBL 180-Watt Sound System and Subwoofer

### Detroit Assurance 5.0 Lane Departure Warning System\*

### Detroit Assurance Safety System\*

Object Detection  
Active Brake Assist  
Pedestrian Detection  
Auto On/Off Headlights  
Auto Rain Sense Wipers  
Intelligent High Beams

### Tire Pressure Monitoring System

### HD 360 Camera System

\*New for 2024





Floor plan 4530 with Seahaven décor and Sable Maple cabinets  
*\*The backsplash in 2024 Supreme Aire models will differ from the one shown here*

## Cabin

**Four Décor Options:  
Barton\*, Haven, Linley, and Seahaven\***

**Villa Comfort Fit Hide-A-Bed Sofa  
and Jackknife Sofa\*\***

**50" Samsung® 4K LED TV**  
Bose® 900 Sound Touch Soundbar

**Power Stepwell Cover**

**Porcelain Tile Flooring**

\*New for 2024  
\*\*See Features & Options for all available furniture configurations



# Cabin

**15K BTU Penguin™ Heat Pump  
Air Conditioners\***

**Electric Radiant Heat Beneath  
Main Floor Tile**

**WiFiRanger Everest System  
with Aspen Router (Optional)**

**Silverleaf® Monitor**

**Mobile App**  
(to control elements of the coach)

*\*Two units on 40' models, three units on 45' models*



Floor plan 4530 with Seahaven décor and Sable Maple cabinets  
*\*The backsplash in 2024 Supreme Aire models will differ from the one shown here*



*\*The backsplash in 2024 Supreme Aire models will differ from the one shown here*

# Galley & Dinette

**All-Electric Flush Mount Induction Cooktop**

**Convection Microwave**

**Whirlpool® 19.7 Cu. Ft. Refrigerator**

**Dishwasher in a Drawer** (Optional)

**Glazed Maple Hardwood Cabinets\***

Available in Four High Gloss or Matte Finish Color Options

Soft-Close Drawers

Undermounted LED Lights

**Pantry**

Pull-Out Shelves

Push-to-Release Drawer Slides

**Super Polished Solid-Surface Countertops**

**Tile Backsplash**

**Booth Dinette\*\***



*\*Newly styled for 2024*

*\*\*Additional dinette configurations available; see Features & Options for details*







# *Bedroom*

**King Bed\* with Pillow Top Mattress**

Adjustable Support Air Bed (Optional)

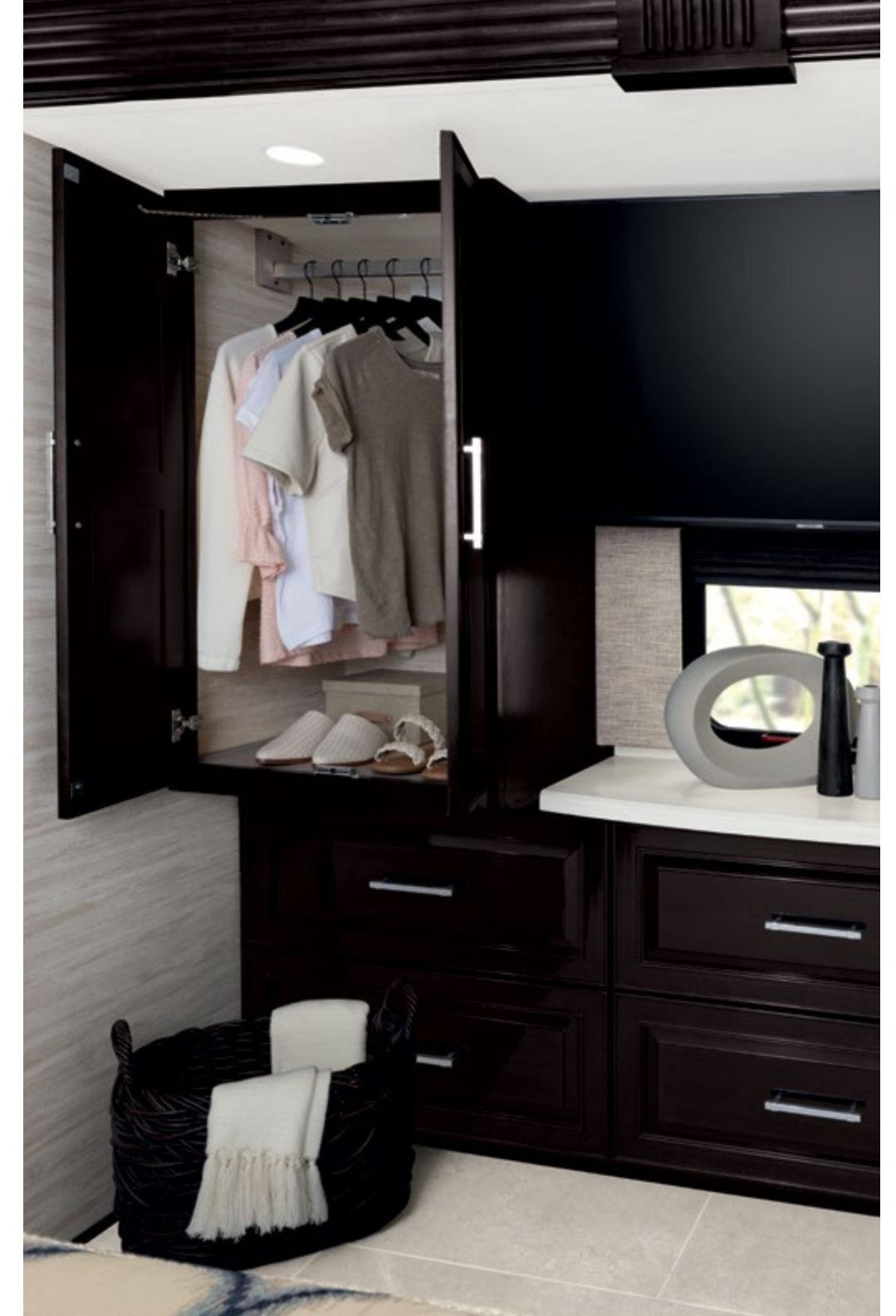
**Samsung® 4K LED TV**

**Bedroom Speakers**

**Lighted Wardrobe**

Safe

**Dimmable Reading Lights**



# Bathroom

**Tiled Shower Walls with Glass Door\***

**Super Polished Solid-Surface  
Countertops**

**Aqua Miser® Shower System**

**150-Gallon Fresh Water Tank**

**Linen Cabinet**



*\*The backsplash in 2024 Supreme Aire models will differ from the one shown here*

*\*Shower sizes vary by floor plan  
Half baths available on select floor plans*



# Exterior & Storage

**Industry-Exclusive Full Paint  
Masterpiece Finish™ with Cut and Buff**  
New Exterior Design and Color Combinations\*

**New Graphic Design and Color Options**

**Girard® Nova Side Awnings**

**Power Baggage Door Locks**

**Lighted Exterior Storage Compartments**

**Dometic® Freezer on Pullout Tray**  
(Optional)

**Exterior Entertainment Center (Optional)**  
43" Samsung® LED TV  
Bose® Soundbar

\*New for 2024



# Exterior

**Rear Cap Storage**

**Exterior Shower**

**12.5 kW Cummins Onan®  
Diesel Generator**

**10 Watt Solar Panel**  
(to Charge Chassis Battery)



*interior & exterior*  
*Design Options*



# Aberdeen



Awning Color: Charcoal Tweed

## BARTON INTERIOR

a. Furniture/Fabric   b. Flooring   c. Counter Top



*\*Exterior colors and interior décor options can be matched to customer preference.*

## CABINET FINISHES



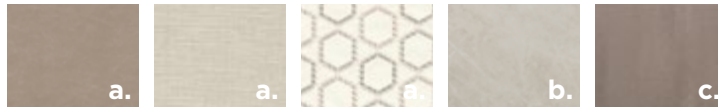
*\*Available in Matte and High Gloss Finish*

# Coventry

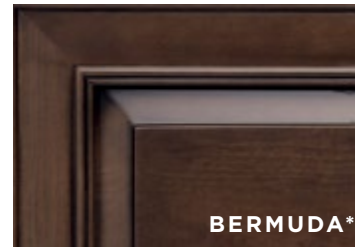


Awning Color: Charcoal Tweed

## HAVEN INTERIOR a. Furniture/Fabric b. Flooring c. Counter Top



## CABINET FINISHES



\*Exterior colors and interior décor options can be matched to customer preference.

\*Available in Matte and High Gloss Finish

# Kingston



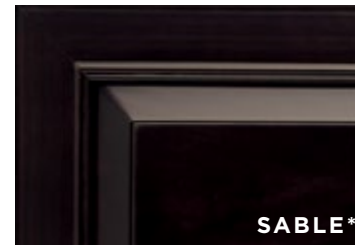
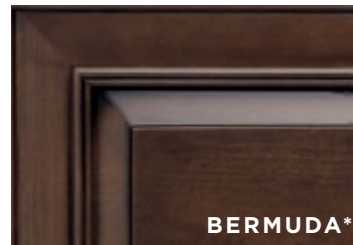
Awning Color: Charcoal Tweed

## LINLEY INTERIOR a. Furniture/Fabric b. Flooring c. Counter Top



*\*Exterior colors and interior décor options can be matched to customer preference.*

## CABINET FINISHES



*\*Available in Matte and High Gloss Finish*



# Wakefield



Awning Color: Linen Tweed

**SEAHAVEN INTERIOR** a. Furniture/Fabric b. Flooring c. Counter Top



**CABINET FINISHES**



*\*Exterior colors and interior décor options can be matched to customer preference.*

*\*Available in Matte and High Gloss Finish*

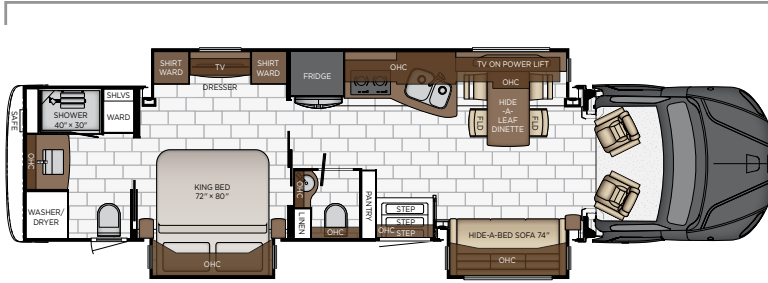




# Floor Plan Specifications

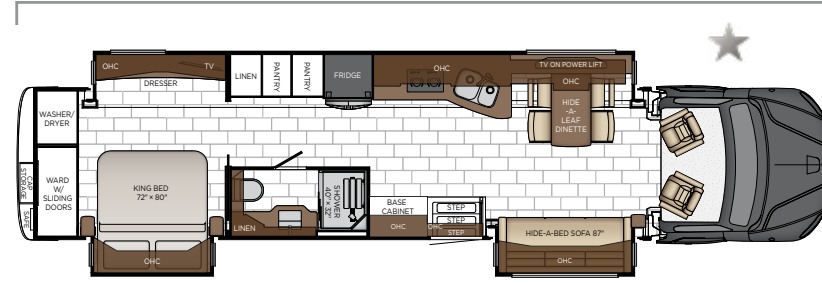


Length: 41' 2"



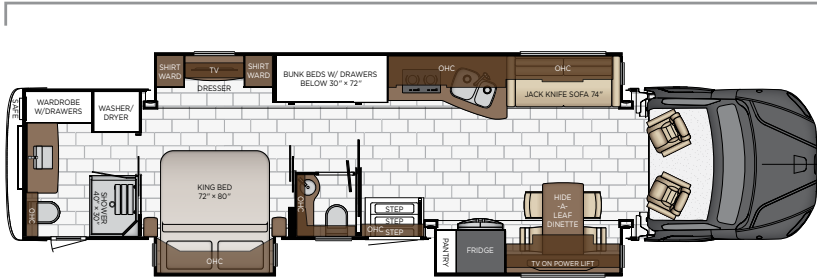
<b>4051</b>	Length	41' 02"	Grey Tank	60 gal.
	Width	101.5"	Sewage Tank	40 gal.
	App. Overall Height	13' 02"	Water Tank	150 gal.
	Interior Width	95.5"	Propane Tank	0 gal.
	Interior Height	83"	Furnace	50,000 btu

Length: 44' 11"



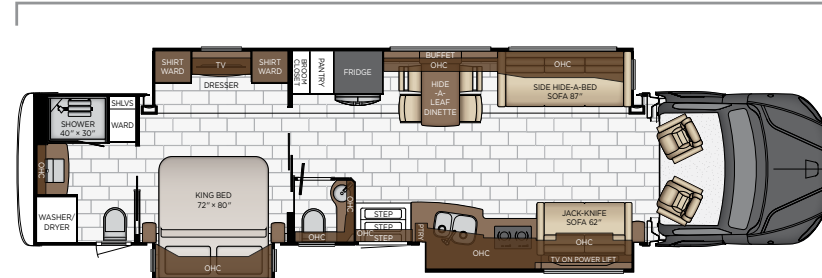
<b>4504</b>	Length	44' 11"	Grey Tank	60 gal.
	Width	101.5"	Sewage Tank	40 gal.
	App. Overall Height	13' 02"	Water Tank	150 gal.
	Interior Width	95.5"	Propane Tank	0 gal.
	Interior Height	83"	Furnace	50,000 btu

Length: 44' 11"



<b>4509</b>	Length	44' 11"	Grey Tank	60 gal.
	Width	101.5"	Sewage Tank	40 gal.
	App. Overall Height	13' 02"	Water Tank	150 gal.
	Interior Width	95.5"	Propane Tank	0 gal.
	Interior Height	83"	Furnace	50,000 btu

Length: 44' 11"



<b>4530</b>	Length	44' 11"	Grey Tank	60 gal.
	Width	101.5"	Sewage Tank	40 gal.
	App. Overall Height	13' 02"	Water Tank	150 gal.
	Interior Width	95.5"	Propane Tank	0 gal.
	Interior Height	83"	Furnace	50,000 btu



SupremeAire

NEWMAR

# Quality You Can Feel

Like a fine home, the 2024 Supreme Aire is framed 16 inches on center, and is covered by a fiberglass roof with an integrated gutter rail.

FREIGHTLINER®											
FLOOR PLAN	ENGINE HP	AXLE RATIO	FUEL CAP.	WHEEL BASE	FRONT GAWR	REAR GAWR	TAG GAWR	GVWR	GCWR	APP. UVW	APP. NCC
4051	525	3.58	100 gal.	285 + TAG	18000 lb.	20000 lb.	20000 lb.	58000 lb.	72000 lb.	41500 lb.	16500 lb.
4504	525	3.58	100 gal.	309 + TAG	18000 lb.	20000 lb.	20000 lb.	58000 lb.	72000 lb.	43500 lb.	14500 lb.
4509	525	3.58	100 gal.	309 + TAG	18000 lb.	20000 lb.	20000 lb.	58000 lb.	72000 lb.	43500 lb.	14500 lb.
4530	525	3.58	100 gal.	309 + TAG	18000 lb.	20000 lb.	20000 lb.	58000 lb.	72000 lb.	43500 lb.	14500 lb.

**The content in our literature depicts and describes products that are subject to change. For the most recent images and information, please visit [NewmarCorp.com](http://NewmarCorp.com).**

Lengths, heights, widths, and dry weights are approximate. Weight will vary based on optional equipment added to the above base weight.

**GAWR:** Gross Axle Weight Rating is the maximum permissible weight for an axle.

**GVWR:** Gross Vehicle Weight Rating is the maximum permissible weight for a fully loaded motor coach.

**GCWR:** Gross Combination Weight Rating is the value specified by the manufacturer of the vehicle as the maximum allowable loaded weight of this motor coach and any towed trailer or towed vehicle.

**UVW:** Unloaded Vehicle Weight is the weight of this motor coach as built at the factory with full fuel, engine oil, and coolants. Does not include cargo, fresh water, propane gas, or dealer-installed accessories.

**NCC:** Net Carrying Capacity is the maximum weight of all occupants, including the driver, personal belongings, food, fresh water, waste water, propane gas, tools, tongue weight of towed vehicle, dealer-installed accessories, etc., that can be carried by the motor coach.

**Specifications supplied by the chassis manufacturer.**

**Supreme Aire R-Values:**

- Roof R-Value = 19
- Sidewall R-Value = 11
- Floor R-Value = 16
- Basement R-Value = 4

# Features & Options



## EXTERIOR FEATURES

Full-Paint Masterpiece Finish™ Graphics with Cut and Buff and Beta Fusion Protection on Front Cap

Lighted Newmar Badge in Front Cap

Chrome Power Baggage Door Locks, Keyless Entry Door with Touch Pad and Door Bell

Convex Exterior Mirrors with Defrost and Remote Control

Automatic Triple Entrance Door Step-Hydraulic

Assist Handle at Entrance Door

Mud Flaps

Rear Protective Tow Guard with Stainless Steel Newmar Name Cutout

Undercoating

Hydraulic Leveling Jacks

Stainless Steel Exterior Trim Pieces and Entrance Door Kick Panel

Storage Bins in Pegboard Compartment

Power Lock Cockpit Doors

Rear Cap Storage

## OPTIONS

Storage Tray 39" X 56" Non-Power Location-Bay 6

Storage Tray 39" X 56" Non-Power Location-Bay 5

Stainless Steel Trim Kit for Exterior Compartment Doors

Flag Pole Bracket

## CONSTRUCTION FEATURES

Fiberglass Roof and Integrated Gutter Rail

Gelcoated Fiberglass Exterior Sidewalls, Front and Rear Caps

Aluminum-Frame Sidewalls and Roof Construction, 16" on Center

5/8" Foam Insulation Laminated in Sidewalls and Ceiling

Polar Pak R19 Batten Insulation on Roof

Automatic Lock Arms on Non Hydraulic Slideout Rooms-Paddle Style

Egress Door with Ladder System\*

HWH Flat Floor Slideout

## WINDOWS, AWNINGS, & VENTS

Frameless Double-Pane Tinted Safety-Glass Windows

Fan-Tastic® Vent with Rain Sensor in Kitchen, Bathroom and Enclosed Stool Room

Hardwood Louvered Cover on Fan-Tastic® Vent in Kitchen

Sky Window in Cockpit with Power Shade

Girard® Package-Two Nova Side Awnings, Slideout Covers and Power Window Awnings

Driver and Passenger Power Window

Bunk Windows\*

## OPTIONS

Kitchen Window

## CHASSIS FEATURES

100 Gallon Fuel Capacity

30K Rear Hitch for Towing-Includes Draw Bar with 2-5/16" Ball

Aluminum Wheels

Anti-Lock Braking System

Chassis Battery Disconnect

Electronic Stability Control

Cruise Control

Standard M-2 112 Chassis Detroit DD13-525 Engine 311" Wheel Base

Standard M-2 112 Chassis Detroit DD13-525 Engine 335" Wheel Base

Tandem Rear Drive Axles

Tire Pressure Monitoring System

D.A.S.S.-Auto On/Off Headlights, Intelligent High Beams, Auto Rain Sense Wipers

D.A.S.S.-Object Detection, Active Brake Assist, Pedestrian Detection

Detroit Assurance Lane Departure Warning System

## AIR CONDITIONING & HEATING

Two 15K BTU Penguin™ Heat Pump Air Conditioners with Remote Control Thermostat on 40'

Three 15K BTU Penguin™ Heat Pump Air Conditioners with Remote Control Thermostat on 45'

Chinook Dual Loop Heat with Continuous Hot Water

Dash Heater and Air Conditioner

Wall Mounted Sensors for Heating and Air Conditioning

Roof Air Conditioning Drainage System

Electric Radiant Heat Installed Below Main Floor Tile

## ELECTRICAL FEATURES

12.5 kW Onan® Diesel Generator

Generator Start/Stop Function on Touchscreen in Water Bay Compartment

50 Amp Electrical Service with Flexible Cord with Automatic Transfer Switch

Eight 6-Volt AGM House Batteries

Battery Disconnect Switch for House Battery

10 Watt Solar Panel to Charge Chassis Battery

3000 Watt True Sine Inverter

Integrated Block Heater

Energy Management System

Exterior Security Lights

Midship Side Turn Signals



LED Lights Recessed in Ceiling and Underneath Overhead Cabinets  
 Accent Lights in Feature Ceiling, Slideout Fascia Trim and Lambrequins  
 LED Lighting in Pull-Out Pantry, Kitchen and Bathroom Base Cabinets  
 LED Lights in Exterior Storage Compartments on Automatic Switches  
 LED Lights Installed Under Door Side Slideouts  
 Lights in Wardrobes  
 Manually Operated Hold-To-Run Slideout Switch  
 Automatic Generator Start on Low Battery or Temperature Setting

Cable TV Connection  
 Interior Courtesy Lights  
 USB Outlet at Dinette and Bedroom Night Stand  
 USB Outlet at Dash for Driver Use  
 Power Rewind Wheel with 50' Cord  
 Recessed Docking Lights  
 KIB Touch Screen Interior Light and Shade Controls  
 Secondary Multiple Touchscreen in Bedroom  
 Silverleaf® Multiplex Electrical Wiring System  
 Solar Prep with Six Gauge Wire from the Roof House Battery Compartment  
 Spare Fuses in Chassis and House Fuse Panels  
 110 Volt Recept in Bed Overhead with Two Pass-Through Ports  
 110 Volt/USB Outlet at Head of Each Bunk\*  
 Transfer Switch with Surge Protector  
 Reading Lights at Head of Bed-Dimmable with Adjustable Aim  
 Multiplex Lighting Control System with LCD Display Touchscreen  
 System Control App to Control Numerous Features from Personal Device

**OPTIONS**

LED Strip Lighting Installed Under Off Door Side Slideouts  
 Four Flexible 110 Watt Solar Panels on Roof  
 Cord Connection 50 Amp/120/240 Volt for Stacker Trailer  
 Lithium Ion 640 AHR Battery System with Two 3000W Pure Sine Inverters  
 Lithium Ion 960 AHR Battery System with Two 3000W Pure Sine Inverters

**PLUMBING & BATH FEATURES**

Demand Water System  
 Sewage Holding-Tank Rinse  
 Dometic® 321 China Bowl Stool or Macerator Stool\*  
 Aqua Miser® Shower System  
 Tiled Shower Walls with Glass Door  
 Fold-Down Shower Seat\*  
 Water Filter for Entire Unit

Exterior Shower  
 Auto Fill for Fresh Water Tank  
 Power Water Hose Reel  
 12 Volt Dump Valves  
 150 Gallon Fresh Water Tank  
 Grey Holding Tank Rinse  
 Bladder Tank for Water Pump System  
 Hot Water Line Run to Front Off-Door Side Storage Bay

**OPTIONS**

Assist Handle in Each Shower  
 RV Sanicon Turbo System

**INTERIOR FEATURES**

Tile Floor in Kitchen, Bathroom, Bedroom and Living Areas  
 Auto Motion Power Shades and Lambrequins  
 Interior Assist Handle at Main Entry Door  
 Fitted Non-Quilted Bedspread with Accent Pillows  
 Safe Located in Bedroom Wardrobe  
 Wastebasket in Kitchen Base Under Sink  
 Shoe Storage Shelves Recessed in Rear Cap of Wardrobe\*  
 Flush Handles on Swinging Bath Doors  
 Hardwood Raised Panel Interior Passage Doors  
 Padded Vinyl Ceiling with Designer Feature Panels  
 Power Stepwell Cover

**CABINETS & FURNITURE**

Bermuda Glazed Maple Hardwood Cabinets with Raised Panel Doors-Matte Finish  
 Concealed Hinges on Cabinet Doors  
 Super Polished Solid-Surface Countertop in Kitchen with Undermounted Stainless Steel Sink and Sink Covers  
 Super Polished Solid-Surface Countertop in Bathroom and Bedroom  
 Cooktop Cover Flush, Matching Countertop Material  
 Lifts on Bed Top  
 Pull-Out Pantry Shelves\*  
 Push-to-Release Drawer Slides in Pantry  
 Pantry with Space for Serving Trays and Bakeware  
 Soft-Close Side Hinge Cabinet Doors  
 Drawers with Dove Tail Sides with Self-Closing Full Extension Ball Bearing Guides  
 Villa Furniture  
 Plush Pillow Top Mattress

Extended Rotation Concealed Hinge for Washer and Dryer Cabinet Door

Mesh Cell Phone Holder at Each Bunk Bed\*

Molded Silverware Divider Tray

Driver and Passenger Seats Air Ride with Electric Lumbar

#### OPTIONS

Driftwood Glazed Maple Hardwood Cabinets with Raised Panel Doors-High Gloss or Matte Finish

Bermuda Glazed Maple Hardwood Cabinets with Raised Panel Doors-High Gloss Finish

Glacier Glazed Maple Cabinets with Raised Panel Doors-High Gloss or Matte Finish

Sable Maple Hardwood Cabinets with Raised Panel Doors-High Gloss or Matte Finish

R5 Radius Corner Air Mattress

Convertible Dinette with Two Fixed and Two Folding Chairs that Face to Window

Combination Desk/Dinette with Buffet Table, Two Fixed and Two Folding Chairs

Euro Booth Dinette with Two Table Leaves and Two Folding Chairs

Euro Booth/Hide-A-Bed Combo 162" with Two Table Leaves and Two Folding Chairs

Two Recliners with Lampstand and Reading Lights

Powered Theater Seating 74" with Reading Lights and Lighted Cup Holders

Powered Theater Seating 87" with Reading Lights and Lighted Cup Holders

#### APPLIANCES & ACCESSORIES

Stainless Steel 30" Convection Microwave with Air Fryer Feature

Air Horns

Whirlpool® 19.7 Refrigerator

Splendide® Two-Piece Stacked Washer and Dryer

All Electric Flush Mount Induction Cooktop

Central Vacuum with Tool Kit

#### OPTIONS

Dishwasher in Drawer with Stainless Steel Front Located Below Cooktop

Freezer on Pull-Out Tray in Exterior Compartment

Beverage Center with Wine Cooler and Stemware Rack

#### AUDIO, VIDEO & ACCESSORIES

Samsung® LED TV in Living and Bedroom Areas\* (TV Sizes Vary Per Floor Plan)

Samsung® 50" 4K LED TV on Televator in Living Area\*

Bose® 900 Sound Touch in Living Room

Xite Dash Radio with Apple CarPlay®, 9" Single Monitor with Nav-N-Go Navigation

Winegard Rayzar Automatic Digital TV Antenna

Satellite Dish Prep on Roof

Two Bedroom Radio Speakers

TV Jack and 110 Volt Recept in Door Side Exterior Storage Compartment

Cat 6 TV Cables

CB Prep with Antenna

Infrared Repeater System to Operate Audio/Visual Components

WiFi Ranger Denali/Spruce LTE

10 Bc Fire Extinguisher, Smoke, Propane and Carbon Monoxide Detectors

Bose® 500 Subwoofer

Xite Triview Rear View Camera

HD 360 Camera System

#### OPTIONS

SiriusXM® Radio Capability with Antenna (Does Not Include Monthly Subscription)

Exterior Entertainment Center in Storage Compartment with Samsung® 43" 4K LED TV and Bose® Soundbar

Exterior Entertainment Center in Sidewall with Samsung® 43" 4K LED TV and Bose® Soundbar

Camera Rear (2) Prep for Use with Stacker Trailer

Two-19" Skyworth TV/DVD Monitors at each Bunk\*

Universal Toll Module

WiFi System Everest with Aspen Interior Router

Winegard Automatic Open Face Satellite Dish for DISH HD and Bell HD TV

Winegard Automatic Open Face Satellite Dish for DISH and Winegard In-Motion for DISH Network

Winegard Automatic Open Face SWM Satellite Dish for DIRECTV STD/HD

Winegard In-Motion Dome Satellite Dish for DISH STD/HD, DIRECTV STD and Bell Canada

SupremeAire



S U P R E M E A I R E



## A. ROOF

Fiberglass Roof  
 Batten Insulation  
 A/C Ducting  
 16" on Center Aluminum Rafter Framing  
 Kraft Paper Vapor Barrier  
 5/8" Bead Foam  
 3/16" Panel  
 Padded Vinyl Overlay

## B. SIDEWALL

Interior Wall Panel  
 5/8" Bead Foam  
 Kraft Paper Vapor Barrier  
 Batten Insulation  
 Composite One-Piece  
 Gelcoat Exterior Sidewall  
 Aluminum Framing

## C. FLOOR

Carpet/Tile  
 Carpet Padding  
 5/8" Floor Decking  
 Batten Insulation  
 16" on Center Wood Framing  
 Polyethylene Moisture Barrier

## D. EXTERIOR

15M Penguin™ Heat Pump Central  
 Air Conditioner  
 One-Piece Bonded Windshield  
 Coated Aluminum Wheels  
 Frameless, Double-Pane,  
 Tinted Safety Glass Windows  
 Side-Hinged Baggage Doors with  
 Optional Pull-Out Tray

# The Newmar Customer Experience

The Newmar Difference™ goes beyond our industry-leading motor coaches to provide you with an unrivaled ownership experience.



## Quality from the Start

Every Newmar is crafted one at a time by folks who have spent an average of eight years building them. And each coach we assemble must undergo more than 1,000 tests and checks before ever leaving our factory.



## Carefully Selected Dealers

We view our dealership network in terms of quality, not quantity. Each of our dealers acts as a partner in our shared mission to exceed your highest of expectations, for an ownership experience that's second to none from day one.



## Everything in One Place

As a Newmar owner, you'll find resources specific to your coach through Newgle, an easy-to-use knowledge base that houses everything from user guides to technical support documents.



## Friends for Life

Meet fellow owners through the Newmar Kountry Klub, a top social club for RV travelers that hosts rallies and other special events throughout the U.S. and Canada.



## Seamless Service

When you join the Newmar family, we pair you with a dedicated service specialist with expert knowledge of your exact coach. Our service specialists guarantee dealer warranty authorizations within four business hours and ship all in-stock parts the same day, free of charge.



## Rock-Solid Protection

All models include a one-year/unlimited mileage limited warranty and a five-year, non-transferable structural warranty that covers your coach's superstructure in the event it fails to perform. Ask your Newmar dealer for more details.

*Our Partners*

The Newmar Difference™ begins with suppliers dedicated to providing our customers with unrivaled quality, comfort, and support.



*BASF*

The Coatings division of BASF is a global expert in the development and production of innovative and sustainable OEM and refinish coatings. Coatings by BASF—solutions beyond your imagination.



*Industrial Finishes*

Industrial Finishes has supported RV manufacturers for over four decades, offering paint products that deliver uncompromising quality and provide your coach with a true Masterpiece™ finish.



Driven By You

*Freightliner  
Custom Chassis*

Freightliner Custom Chassis are renowned for their exceptional ride, excellent maneuverability, advanced technology, and nationwide 24/7 factory-direct support.



*RIVERPARK*

From Samsung® 4K TVs and Xite Infotainment systems to Bose® soundbars and JBL and Infinity premium audio systems, RiverPark helps you experience a higher level of technology in your Newmar coach.



*Spartan Motors*

An American company with over 30 years of experience in designing and manufacturing the premier motorhome chassis, Spartan delivers superior performance, exceptional safety ratings, and industry-leading technology.



WHEN YOU KNOW THE DIFFERENCE<sup>SM</sup>