

2023 ENTEGRA COACH ETHOS LI

# Ethos Li

GAS CLASS B MOTORHOME



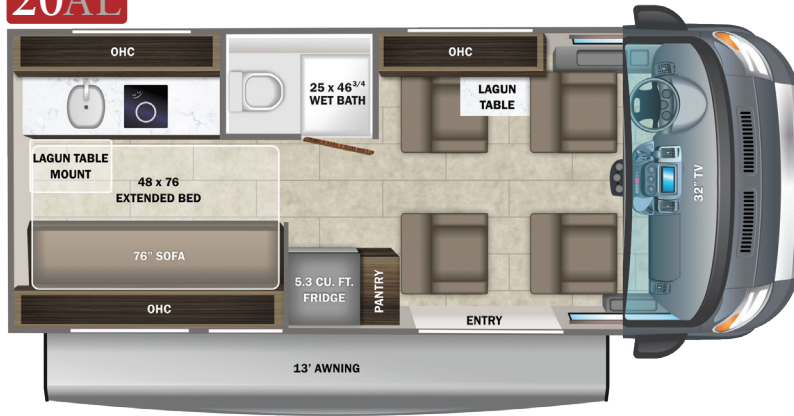
ENTEGRACOACH



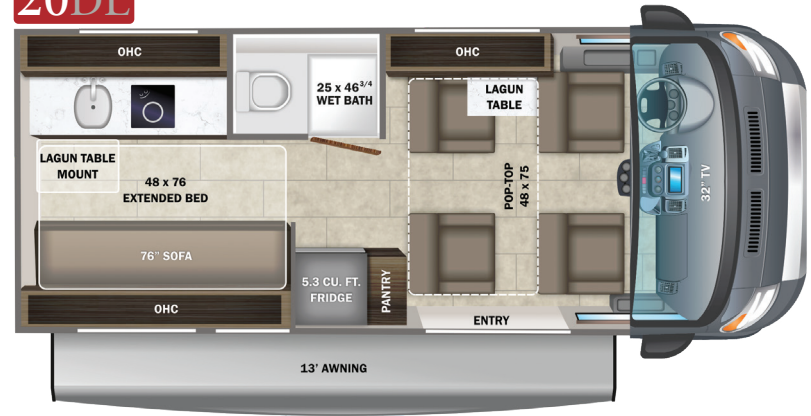




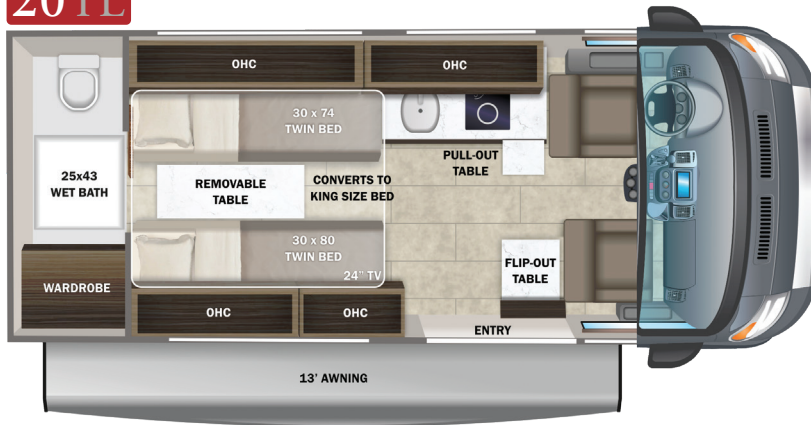
20AL



20DL



20TL



## INTERIOR DÉCOR

Autumn



## EXTERIOR SELECTIONS



Granite Van



Silver Van

## CUSTOMER VALUE PACKAGE

E-Z DRIVE™: Hellwig helper springs, premium heavy-duty suspension  
Thule® armless patio awning with LED light strip  
Thule® roof rack (N/A 20DL)  
Induction cooktop  
Timberline hydronic heating system  
Swivel driver and passenger seats with 6-way lumbar adjustment  
Winegard® Connect 2.0 4G/Wi-Fi/digital TV antenna

## STANDARD EXTERIOR EQUIPMENT

RAM® ProMaster 3500 window van  
GVWR- 9,350 lb.  
GCWR- 11,500 lb.  
3.6L V6 24V VVT 276HP engine with 250 ft.-lb. torque  
9-speed automatic 948TE transmission  
180 amp alternator  
Aluminum wheels  
Daytime running headlamps  
Power folding/heated side-view mirrors  
LT225/75R 16E tires  
3,500 lb. rear hitch receiver with dual 4/7 pin connector  
12V chassis battery  
24 gal. fuel tank (gas)  
Heated holding tanks (12V pads)  
LED-lit running boards for cab and entry doors  
(2) 110V exterior outlets on each side of van  
Portable solar plug  
LED-lit holding tank valves  
Chrome grille package  
Satellite prep  
Outside shower  
48V - 210 amp hour smart lithium battery providing 10KW hours of power  
3,500W inverter  
2nd alternator (48V) dedicated to lithium battery  
200W of roof-mounted solar panels  
Slow charge solar panel for chassis battery  
30 amp electrical service with detachable power cord  
13,500 BTU 48V Coleman®-Mach® 10 air conditioner

Winterization drain system  
Black tank flush  
12V demand water pump  
Water filtration system  
House battery disconnect switch  
Aqua View® SHOWERMISER™ water management system

## STANDARD INTERIOR EQUIPMENT

10 in. Uconnect® infotainment center with GPS  
Power windows and door locks  
A/C and cruise control  
Wireless charging pad  
Rain-sensing wiper system  
Traffic sign assist  
Backup camera  
Leather-wrapped steering wheel with integrated controls  
Cab area privacy shade  
Remote keyless entry  
Custom-molded, vinyl-wrapped ABS interior wall panels  
Sliding screen door for entrance door  
Expandable table at entry door with safety grab handle (20TL only)  
Soft-touch vinyl ceiling  
High-intensity LED ceiling lights  
Tecnoform® European-style, high-gloss cabinetry  
Ball-bearing drawer guides  
Residential vinyl flooring  
Firefly Multiplex system  
Sliding vented windows  
Decorative window valances with night roller shades  
Rear magnetic privacy shades  
Removable privacy shade for sliding door window  
Powered roof vent in living area  
(2) additional cab bucket seats (20AL, 20DL)  
32 in. front TV on drop-down bracket (20AL, 20DL)  
24 in. living area TV on swivel bracket (20TL)  
Cable TV hookup with RG-6 coax  
Collapsible dinette table  
5.3 cu. ft. AC/DC refrigerator (20AL, 20DL)  
3.1 cu. ft. AC/DC refrigerator (20TL)  
Convection microwave

Stainless steel sink with glass cover and kitchen accessories  
Solid-surface kitchen countertop with pull-out extension  
Pop-up 110V/USB outlet in kitchen  
50.5 in x 79.5 in. pop- top (20DL)  
(2) twin-size beds with adjustable headrests, Froli® sleep system and filler cushion to convert to king-size bed (20TL only)  
Under-bed storage (20TL only)  
48 in. x 76 in. convertible sofa bed (20AL, 20DL)  
Bathroom wardrobe with drawers  
Shower with magnetic curtain surround  
Toilet with foot flush  
Medicine cabinet with mirror  
Powered roof vent in bathroom  
Seatbelts for driver/passenger seats and select cab locations  
Driver and passenger airbags  
Smoke alarm  
Carbon monoxide detector  
Fire extinguisher

## WARRANTY

**2**  
**YEAR**  
LIMITED  
**WARRANTY**

At Entegra Coach, we build our RVs to handle every adventure, then back them with an outstanding warranty. Our 2-year limited warranty has you covered for 2 camping seasons. That's 730 days. For a copy of our 2-year limited warranty with complete terms and conditions, please contact your local Entegra Coach dealer.

Floorplan	GVWR (lbs.)	GCWR (lbs.)	Wheel Base	Overall Length	Exterior Height w/ A/C & Satellite	Exterior Width	Interior Height	Fresh Water Capacity (gal.)	Grey Waste Water Capacity (gal.)	Black Waste Water Capacity (gal.)
20AL	9,350	11,500	159	20' 11"	9' 3"	83	74	21	13/14	10
20DL	9,350	11,500	159	20' 11"	9' 3"	83	74	21	13/14	10
20TL	9,350	11,500	159	20' 11"	9' 3"	83	74	24	13	12

It is important for your safety and enjoyment that you are aware of the weights and tow ratings of the RV you select. Consult a competent advisor for questions or advice. Whether you are new to RVing or a veteran, get a feel for the performance of your RV before heading out on the roadways. When you tow a vehicle with your RV, you must drive differently than when you drive a single vehicle. Practice hooking up, driving, backing up and braking in a safe environment or seek out professional instruction. Jayco affixes a weight label to each RV which lists weight information for that vehicle. Refer to that label to verify the vehicle will meet your requirements. Gross Vehicle Weight Rating (GVWR): The maximum permissible weight of the motorhome, including the Unloaded Vehicle Weight (UVW) plus passengers, personal items, all cargo, fluids, options and dealer-installed accessories. The GVWR is equal to or greater than the sum of the UVW and the Cargo Carrying Capacity. Gross Combined Weight Rating (GCWR): The maximum allowable combined weight of the motorhome used as a tow vehicle and the attached towed vehicle.



Part of Jayco Family of Companies

Entegra Coach, Inc., P.O. Box 460, Middlebury, IN 46540, [www.entegracoach.com](http://www.entegracoach.com). See dealer for further information and prices. All information in this brochure is the latest available at the time of publication approval. Entegra Coach reserves the right to make changes and to discontinue models without notice or obligation. Photos in this brochure may show optional equipment and props for photography purposes. RVs built for sale in Canada may differ to conform to Canadian codes. ©2023 Entegra Coach, Inc. Printed in U.S.A. 2032560.2023



[entegracoach.com/ethos-li](http://entegracoach.com/ethos-li)