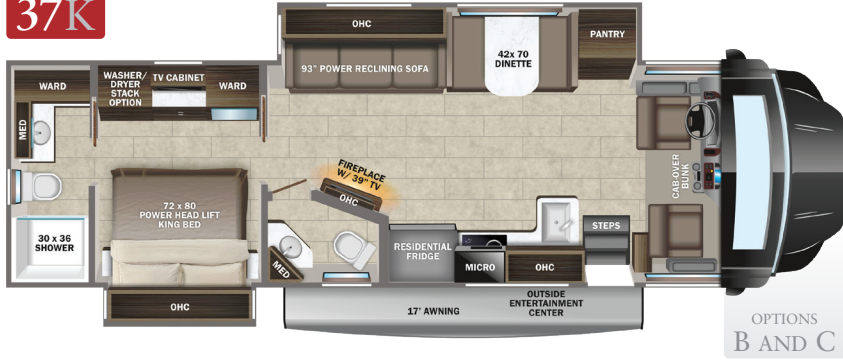
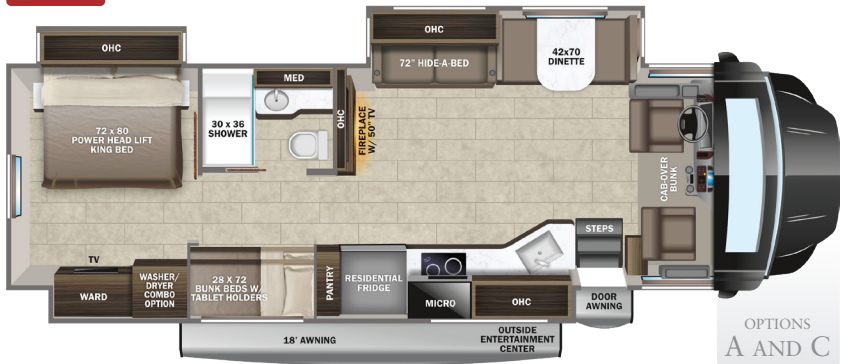


**37K**



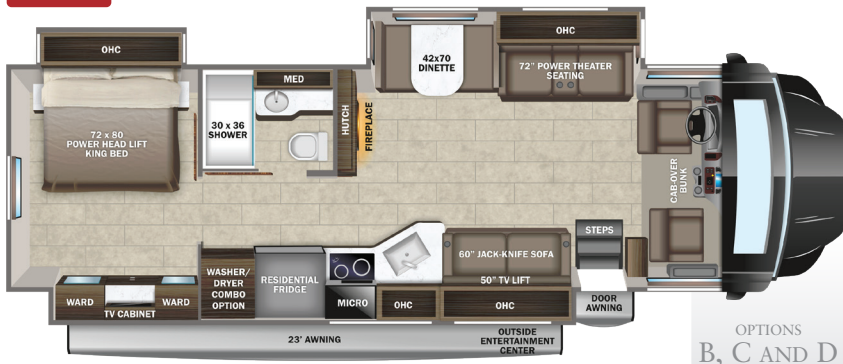
OPTIONS  
B AND C

**37L**



OPTIONS  
A AND C

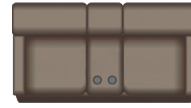
**37M**



OPTIONS  
B, C AND D

### OPTIONS

A



Theater Sofa Option

B



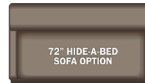
Freestanding  
Dinette Option

C



12 cu. ft.  
Fridge Option

D



Hide-a-Bed  
Sofa Option

### EXTERIOR SELECTIONS



Cobblestone Full-Body Paint



Moonlight Full-Body Paint



Oceanside Full-Body Paint



Sienna Full-Body Paint

### INTERIOR DÉCOR

Carbon



Fossil



## CUSTOMER VALUE PACKAGE

E-Z DRIVE™ PREMIER: Computer-balanced driveshaft, rear air suspension, heavy-duty rear stabilizer bar, full air brakes, SACHS shocks  
 One-piece, seamless fiberglass front and rear caps  
 Automotive-bonded panoramic window in front cap with power shade  
 Dual-pane, tinted safety-glass windows  
 2) 15,000 BTU A/C units with heat pump on main A/C  
 Electric patio awning with LED lights  
 2,000W pure sine wave inverter  
 Power cord reel with 50 amp service  
 Sony® infotainment center with Apple CarPlay® and Android Auto™  
 Backup and side-view cameras  
 Residential refrigerator  
 Residential-size convection microwave

## STANDARD EXTERIOR EQUIPMENT

Freightliner® S2RV chassis  
 GVWR - 31,000 lb.  
 GCWR - 43,000 lb.  
 Cummins® ISB 6.7L 360 HP diesel engine with 800 ft.-lb. torque  
 Allison® 3000 MH automatic transmission  
 185 amp alternator  
 G-rated highway tires - 275/80R22.5  
 Engine exhaust brake  
 12,000 lb. hitch with 1,200 lb. tongue capacity and 7-pin plug  
 Dual 12V chassis batteries  
 100 gal. fuel tank  
 10 gal. DEF tank  
 Onan® 8,000W Quiet Diesel generator and auto-gen start  
 Transfer switch with reverse polarity protection  
 (4) 6V AGM (220Ah) house batteries on slideout tray  
 190W solar panel with dual controller  
 30,000 BTU auto-ignition furnace  
 Electric fireplace  
 24.5 gal. propane tank (83 lb.)  
 LP quick-connect hookup  
 Thetford® Sani-Con Turbo macerator system  
 Exterior utility center  
 Winterization drain system  
 Black tank flush  
 Outside shower  
 12V demand water pump  
 Water filtration system

TuffShell™ vacuum-bond laminated roof, floor and sidewalls  
 Bead-foam insulation (R-24 max roof, R-9 max floor, R-8 max walls)  
 One-piece, seamless, crowned fiberglass roof  
 Premium Sikkens full-body paint  
 Automatic hydraulic leveling jacks  
 Alcoa® aluminum rims  
 Exterior entertainment center with outside speakers and LED HD Smart TV mounted on swivel bracket  
 Winegard® In-motion satellite dish  
 Deluxe heated, remote-controlled, side-view mirrors  
 Entrance door with industry's largest travel-view window  
 Electric-powered entrance steps  
 Slideout awning(s)  
 Carpeted, full pass-through storage compartments with lockable slam latch doors  
 Roof ladder  
 Smoke alarm  
 Carbon monoxide detector

## STANDARD INTERIOR EQUIPMENT

6-way power driver and passenger seats  
 Power windows and door locks  
 A/C and cruise control  
 Tilt steering wheel  
 Auxiliary start switch  
 Privacy curtains for cab area  
 Custom-molded ABS surround in cab-over area  
 Overhead bunk with 750 lb. capacity  
 Firefly Multiplex system  
 High-intensity recessed LED ceiling lights  
 84 in. interior ceiling height with padded vinyl ceiling  
 Raised-panel hardwood cabinetry throughout  
 Deluxe hidden cabinet hinges  
 Ball-bearing drawer guides  
 Day/night roller shades in living area  
 Vinyl plank flooring  
 Entegra-exclusive, easy-operation legless dinette table  
 LED HD Smart TV in living area  
 Cable TV hookup with RG-6 coax and video selector switch  
 Winegard 2.0 Wi-Fi/4G antenna  
 Wood-framed kitchen window with spice cabinets  
 2-burner induction cooktop  
 LED-lit, solid-surface kitchen countertops with recessed stainless steel sink and sink covers  
 Shower with decorative surround, glass door, skylight and light  
 Porcelain toilet with foot flush

Recessed stainless-steel bathroom sink  
 Powered roof vent in bathroom with wall switch  
 Walk-around, king-size bed with power head lift, bedspread and nightstands  
 USB port and wireless charging in nightstands  
 Under-bed storage (select models)  
 LED HD Smart TV in bedroom  
 Large wardrobes  
 Bunks with industry-exclusive 300 lb. capacity each (37L)  
 Wall-mounted tablet holder in each bunk (37L)  
 2-point lap safety belts in all designated seating locations  
 Third brake light

## OPTIONS

Power theater seating (N/A 37K, STD on 37M)  
 Hide-a-bed sofa (37M)  
 Freestanding table with 4 chairs (N/A 37L)  
 12 cu. ft. gas/electric, 4-door refrigerator  
 Combination washer/dryer (N/A 37K)  
 Stackable washer/dryer (37K)  
 Winegard® TRAV'LER® satellite dish - DIRECTV®  
 Canadian Shaw® TRAV'LER® satellite dish  
 Slide-out tray with 12V refrigerator cooler in basement

## WARRANTY



## NO ONE OFFERS A BETTER WARRANTY

At Entegra Coach, we build our RVs to handle every adventure, then back them with our industry-leading 2+3 limited warranty. Our 2-year limited warranty has you covered for 2 camping seasons. That's 730 days. In addition, our 3-year structural limited warranty has you covered for 3 camping seasons or 1,095 days. You won't find a better limited warranty in the business, because the only strings we attach are those that deliver the ultimate in reliability. For a copy of our 2-year limited + 3-year structural limited warranty with complete terms and conditions, please contact your local Entegra Coach dealer.

It is important for your safety and enjoyment that you are aware of the weights and tow ratings of the RV you select. Consult a competent advisor for questions or advice. Whether you are new to RVing or a veteran, get a feel for the performance of your RV before heading out on the roadways. When you tow a vehicle with your RV, you must drive differently than when you drive a single vehicle. Practice hooking up, driving, backing up and braking in a safe environment or seek out professional instruction. Jayco affixes a weight label to each RV which lists weight information for that vehicle. Refer to that label to verify the vehicle will meet your requirements. Gross Vehicle Weight Rating (GVWR): The maximum permissible weight of the motorhome, including the Unloaded Vehicle Weight (UVW) plus passengers, personal items, all cargo, fluids, options and dealer-installed accessories. The GVWR is equal to or greater than the sum of the UVW and the Cargo Carrying Capacity. Gross Combined Weight Rating (GCWR): The maximum allowable combined weight of the motorhome used as a tow vehicle and the attached towed vehicle.

Floorplan	GVWR (lbs.)	GCWR (lbs.)	Wheel Base	Overall Length	Exterior Height w/ A/C & Satellite	Exterior Width	Interior Height	Fresh Water Capacity (gal.)	Grey Waste Water Capacity (gal.)	Black Waste Water Capacity (gal.)
37K	31,000	43,000	279	39' 4"	13' 4"	101	84	72	51/40	40/23
37L	31,000	43,000	279	39' 4"	13' 4"	101	84	72	50/31	50
37M	31,000	43,000	279	39' 4"	13' 4"	101	84	72	40/40	33/23