

**2023**  
MODEL YEAR

CLASS A GAS  
**INVICTA**

**HR** HOLIDAY RAMBLER  
holidayrambler.com

**32RW | 33HB | 34MB | 36DB**



**TOP FEATURES**

**INVICTA**  
Shown in Chambord Graphics

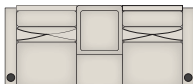
- Ford 7.3L V8. (350HP, 468ft.lb.)
- Standard full body paint
- 22K-26K chassis on 22.5" aluminum Alcoa wheels.
- Stackable or all in one combo washer & dryer available on all floorplans (optional).
- 100W solar panel comes as standard equipment providing a trickle charge to your (4) 6 volt house batteries.
- Wifi Ranger comes standard boosting any Wifi signal.
- Axxera Dash Radio with 9" Tilttable Touch screen- Apple CarPlay and built in Bluetooth.
- Flat interior floor- no annoying step up to cockpit area.
- MultiPlex house controls that can be controlled by your smart device or the digital display centrally located inside your unit.
- Hand laid Tarkett flooring. Full composite tile eliminating the worry of your tile cracking or swelling.
- 5.5kW Generator with auto gen start and 2000W inverter.
- 100 Gallon fresh water tank.
- Cavernous interior and exterior storage.

**AVAILABLE OPTIONS**

- Aerodynamic Front Cap w/Hood & Automotive Headlights
- Automotive, Bonded, One Piece Windshield
- Remote Power Heated Mirrors w/Turn Indicators and Side Cameras
- Power Entry Step w/Light
- Pass Through Storage
- Exterior Entertainment Center w/LED TV
- One Piece Fiberglass Wall w/No Luan Backer
- 100W Solar Panel
- 50 Amp Service / Whole House EMS
- 5.5kW Onan Generator w/Auto Gen Start
- Unidirectional, KING® Controls TV Jack Antenna
- (4) 6Volt House Batteries
- 100 Fresh, 50 Gray (32RW, 33HB, 34MB) | 80 Gray (36DB), 50 gal. Black Tanks
- 10 Gallon Water Heater (32RW, 33HB, 34MB)
- Tankless Water Heater (36DB)
- 2000W Inverter
- Full Body Paint



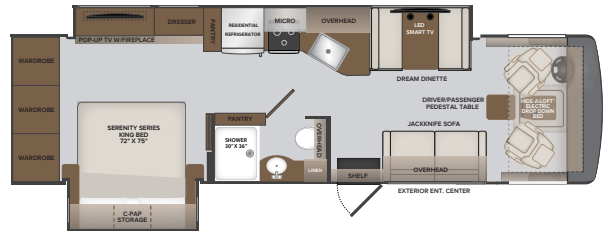
OPT. 126  
W/D ALL IN  
ONE COMBO



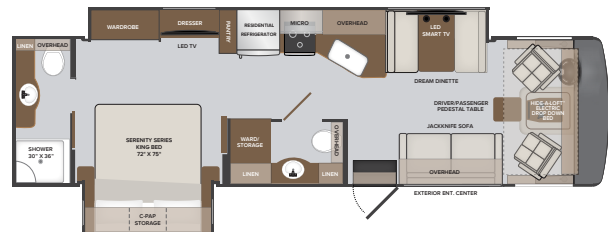
OPT. 194  
MANUAL THEATER SEATING

OPT. 131  
STACKABLE  
WASHER & DRYER

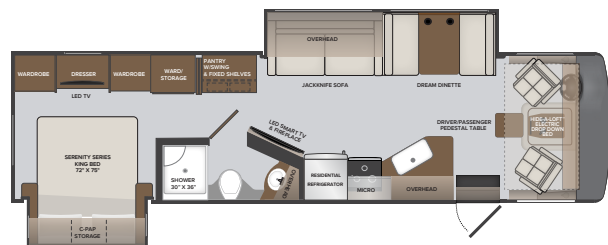
**32RW**



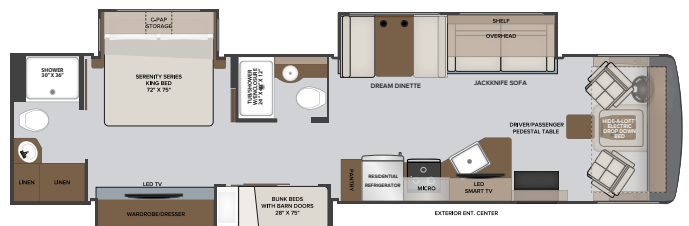
**33HB**



**34MB**



**36DB**

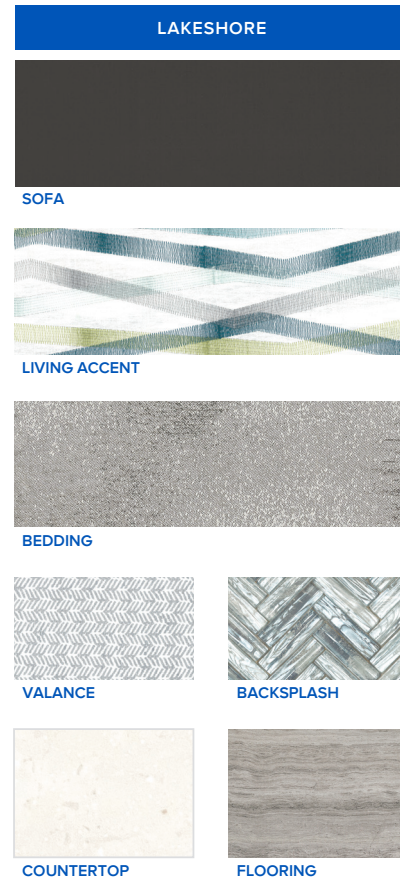
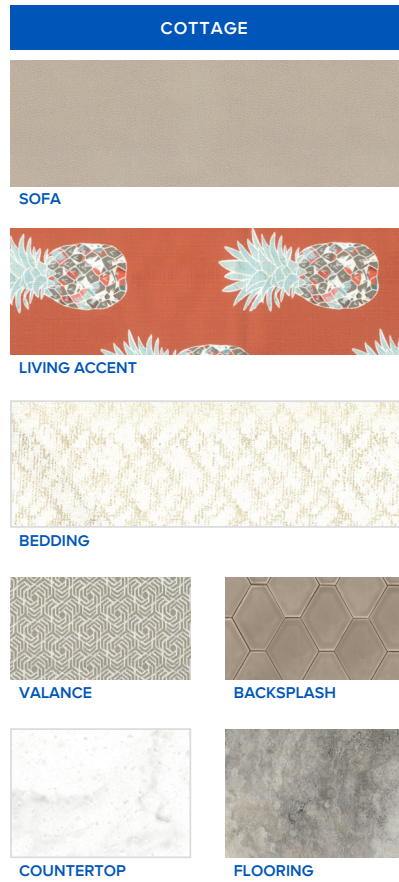
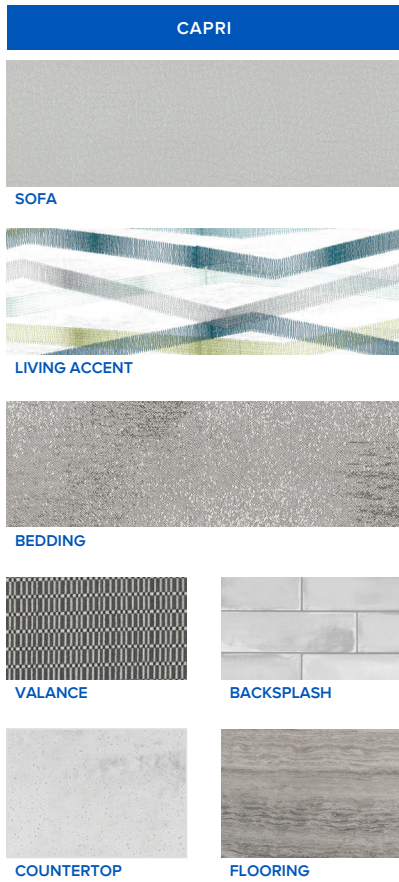


**2023**  
MODEL YEAR

CLASS A GAS  
**INVICTA**

**HR** HOLIDAY RAMBLER  
holidayrambler.com

**32RW | 33HB | 34MB | 36DB**



**CHASSIS**

MODEL	32RW	33HB	34MB	36DB
Wheelbase	228"	228"	242"	252"
Front GAWR (lbs)	8,000	8,000	8,000	9,000
Rear GAWR (lbs)	15,000	15,000	15,000	17,500
GCWR (lbs)	26,000	26,000	26,000	30,000
Hitch Rating Weight (lbs)	8,000	8,000	8,000	8,000
Tongue Weight (lbs)	800	800	800	800
Fuel Capacity (gal)	80	80	80	80

**FORD® CHASSIS**



Model: Ford®  
 Engine: 7.3L Triton V8  
 Transmission: Ford® 6-Speed, Automatic w/Overdrive  
 Alternator: 210 Amp  
 Torque: 468 lb.-ft. @ 3,000 RPM  
 Horsepower: 350HP @ 3,900 RPM

**DIMENSIONS AND CAPACITIES**

MODEL	32RW	33HB	34MB	36DB
Overall Length	34' 6"	35' 3"	35' 9"	38' 11"
Overall Height	12' 10"	12' 10"	12' 10"	12' 10"
Overall Width (Maximum)	100"	100"	100"	100"
Interior Height (Maximum)	82"	82"	82"	82"
Interior Width (Maximum)	96"	96"	96"	96"
Patio Awning Width	14' 0"	14' 0"	20' 0"	12' 0"
Interior Storage (cu. ft.)	153	152	128	148
Exterior Storage (cu. ft.)	138	145	134	120
Fresh Water Capacity (gal)	100	100	100	100
Grey Water Capacity (gal)	50	50	50	80
Black Water Capacity (gal)	50	50	50	50

EXTERIORS



**ALL-NEW EXTERIOR GRAPHICS  
FOR MODEL YEAR 2023**

**INVICTA**