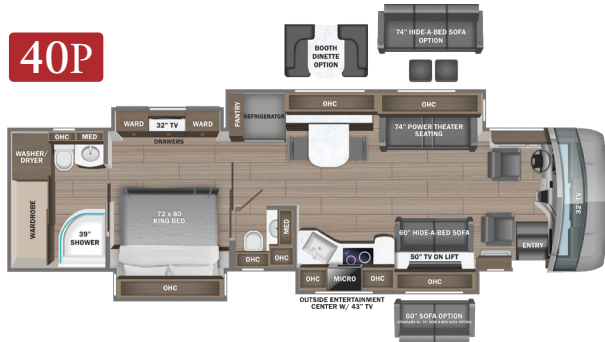
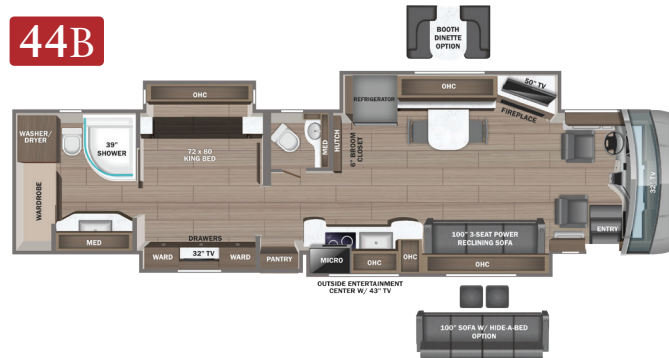


2024 ASPIRE

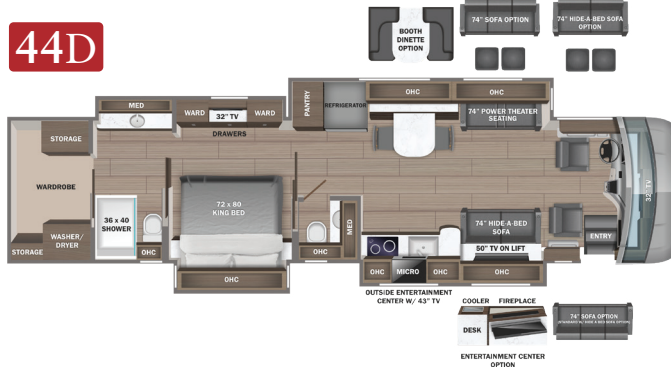
40P



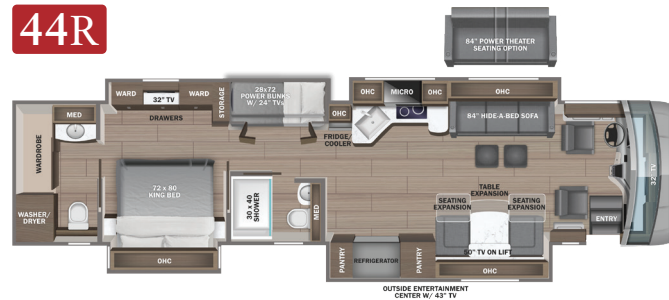
44B



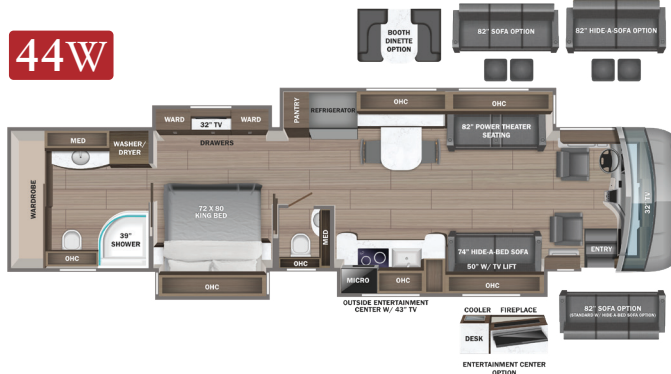
44D



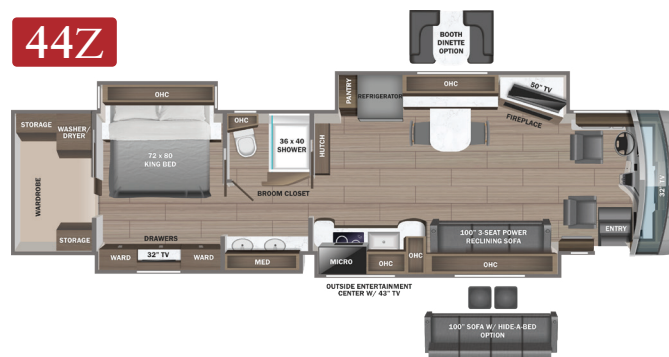
44R



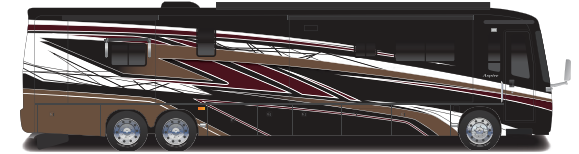
44W



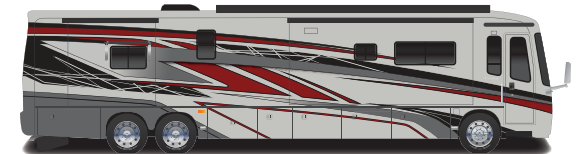
44Z



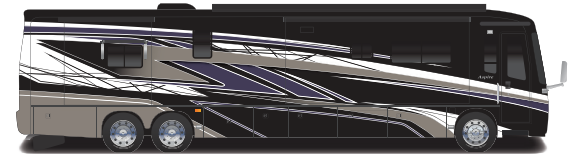
PAINT SELECTIONS



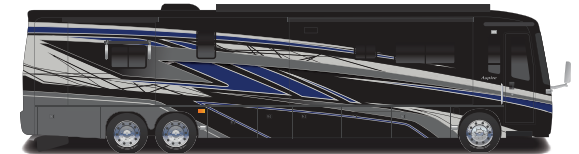
Burgundy Bliss



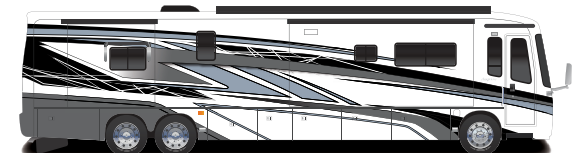
Crimson Grey



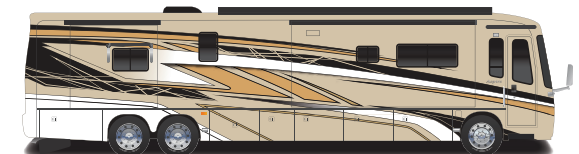
Purple Haze



Ultrasonic Blue



White Coral



White Sands

CHASSIS

Spartan® K2 raised-rail chassis
Cummins® L9 turbocharged 450 HP engine with 1,250 lb.-ft. torque at 1,400 RPM
Allison® 3,000 MH 6-speed transmission
Side-mounted, parallel-airflow radiator
170 amp alternator
1,000W engine block heater
Three-stage engine brake
Reycro® Granning® front axle with independent front suspension - 17,000 lb. rating
Meritor rear axle - 20,000 lb. rating (Dana® rear axle - 24,000 lb. rating on 40P)
Tag axle with one-touch manual air dump - 12,000 lb. rating (N/A 40P)
ABS disc brakes on front axle, drum brakes on drive and tag axle (ABS disc brakes on front and rear axle on 40P)
4.88 rear axle ratio (4.78 on 40P)
Michelin® X Coach Z 295/80R22.5 tires
Bilstein® 46mm shocks
Tire pressure monitoring system (TPMS) with temperature monitoring
Equalizer™ hydraulic automatic coach leveling
Valid™ Truline air leveling system with auxiliary air compressor
Remote air connection
(2) 12V chassis batteries
150 gal. fuel tank with dual fills (100 gal. on 40P)
15 gal. DEF tank with dual fills (single fill on 40P, 44D, 44R)
Spartan® Safehaul tow vehicle air brake system
15,000 lb. hitch with 7-pin plug (10,000 lb. hitch on 40P)

CONSTRUCTION

Roof: 4 in. arched aluminum trusses filled with batt insulation and reflective Flexfoil® topped with 3/8 in. plywood decking then one-piece fiberglass
Sidewalls: 2-1/2 in. exterior walls with Aluma-Tru™ welded tubular aluminum studs on 16 in. centers or less, filled with batt and Flexfoil® insulation, then covered with high-gloss gelcoat fiberglass (R-16)
Floors: 2 in. x 4 in. wood trusses on 16 in. centers or less filled with batt and Flexfoil® insulation then topped with 3/4 in. 7-ply plywood decking (R-33)
X-Bridge™ bracing welded into chassis frame
Aqua-Hot® heated basement storage
Insulated front and rear caps (R-24)
Entegra-exclusive Relia-Torque flush-mounted 12V slideout system

HEAT, A/C, WATER, AND POWER

Onan® 10,000W diesel generator, with automatic start, on slide-out tray
3,000W pure sine wave inverter
(2) L16 AGM batteries (6V/390 amp hrs. ea.)
(2) 200W solar panels
50 amp power cord on electric powered reel
Smart automatic transfer switch with surge protection

Bergstrom dual-zone HVAC system
(3) 15,000 BTU A/C units with heat pumps and condensation drain system
Aqua-Hot® 400D hydronic water and heating system with in-floor heat throughout
Sani-Con® macerator holding tank dump system with manual gate valves and manual backup
Black tank flush
Grey tank flush
Tilt tank dump
City and tank water filtration system
Hot and cold water hook-up in front cap area with 30 ft. quick-disconnect hose
Water hose with electric reel

EXTERIOR

Power rear engine door with manual override
Dual roof-mounted Girard® Vision dual-pitched patio awnings with LED lights
Girard® power entrance door awning with LED lights
Girard® Ultra slideout awnings
Girard® window awnings
Frameless, dual-pane, tinted, safety-glass windows
Lit grab handle with doorbell and keypad system for keyless entry
43 in. Samsung® 4K UHD Smart TV with tilt, swivel, and extend adjustment
JBL® radio and speakers with USB port and receptacle
Chrome, heated, remote-control, side-view mirrors with two-position memory settings
Diamond Shield™ front protective film mask
Automatic LED low beam headlights, halogen high beam headlights and fog lights
Automatic daytime running lights
LED marker lights, turn lights, license plate light, third brake light, accent lights and docking lights
LED accent lights under all slideout rooms
Porch light and motion sensor security lights
Mudflap with chrome "Entegra" nameplate
Starlink satellite internet system
Winegard® TRAV'LER satellite dish DIRECTV® - standard with USA option
Winegard® TRAV'LER Pro satellite dish Shaw TV - standard with CSA option
Winegard® Rayzar Z1 TV antenna
Winegard® Wi-FiRanger™ Wi-Fi extender
Heated exterior utility center with 5 in. LED SeeLevel™ tank monitoring panel
Slideout basement storage tray
Push-button, power-unlatching baggage doors with LED indicator light
Sikkens custom full-body paint

COCKPIT

Valid™ 15 in. digital dash with quad core graphics processor, on-board diagnostics and ability to display traditional instrument cluster, 360° camera system or GPS navigation
Ramco 360° HD digital camera system

Valid™ infotainment system with 15 in. touchscreen, Sygic navigation, Bluetooth®, Sirius XM™ and AM/FM tuner, integrated camera control and house mode whole-coach audio distribution
4.3 in. infotainment control touchscreen in passenger console
E-Z Steer™ adjustable power steering assist
Steering wheel with integrated controls for screen selection, instrument cluster navigation, media source selection, cruise, wipers and Bluetooth® phone functionality
Manual tilt and telescoping steering column
JBL® premium audio 5-speaker sound system with amplifier, speakers and DVC subwoofer
All-in-one automotive antenna for AM/FM/Sirius/GPS dash radio system
Ultra-Vision® one-piece wrap-around tinted windshield
Rain-sensing windshield wipers
32 in. Samsung® LED 1080P Smart TV in front overhead
Leather driver and passenger seats with powered 6-way adjustment, lumbar and footrest functions
Powered flush stepwell cover
Powered adjustable brake and accelerator pedals
Powered front sun visors and privacy shades
Dual USB port and one 12V socket for charging

INTERIOR

Firefly multiplex system with 10 in. VegaTouch touchscreen for complete integration of coach controls (mobile app available)
50 in. Samsung® 4K UHD Smart TV
Bose® sound bar with subwoofer and universal remote control
Sony® Blu-ray™ player
Premium leather Crown Compass furniture
Hand-laid porcelain tiled floors
LED interior lighting
Decorative ceiling feature with integrated accent lighting
Manual solar day shades and blackout night shades
Central vacuum system
Aire-Secure™ travel locks for all pocket doors
Removable screen on entry door
Bar area with beverage chiller and rain glass upper cabinet door with LED accent lighting (44R only)

KITCHEN

Window with push out lever operation and screen
Stainless steel residential refrigerator with ice maker and water dispenser
Induction cooktop with matching wood cover
1.9 cu. ft. convection microwave oven
Fisher & Paykel dishwasher
Solid-surface countertops with stainless steel sink and dimmable LED accent lighting
Filtered water dispenser at kitchen sink
Maxxair® power vent exhaust fan with intake and touch screen control
Large, deep drawer for waste basket with easy access trash chute (trash chute not available on 40P, 44D, 44R)
Pantry with pull-out shelves
Slide-out storage tray(s) in overhead cabinet

BEDROOM

King-size gel memory-foam mattress
32 in. Samsung® LED 1080P Smart TV
Bose® sound bar with universal remote control
Sony® Blu-ray™ player
Ceiling fan
Nightstands with solid-surface tops
Automatic light in rear closet

BATHROOM

Solid-surface countertops with integrated sink and dimmable LED accent lighting
Textured porcelain tile shower with skylight and clear glass shower door
Teakwood shower seat
Fixed shower head and separate hand-held spray wand
Aqua View SHOWERMISER™ water saving system
Thetford® macerator toilet in main bath
Thetford® macerator toilet in mid bath (44D, 44R, 44W)
Thetford® Aria china toilet in mid bath (40P, 44B)
Maxxair® power exhaust fan with intake
Separate washer and dryer

SAFETY

Carbon monoxide detector
Smoke alarm
Storage safe

OPTIONS

Canadian standards (CSA)
Theater seating with power recliners and fixed center console (44R only)
100 in. sofa with hide-a-bed (44B, 44Z only)
Fireplace/TV/entertainment center and work station IPO sofa (44D, 44W only)
LED-lit fireplace (44B and 44Z only)
Winegard® in-motion satellite dome
Winegard® TRAV'LER satellite dish Dish Network®
(2) additional AGM batteries (4 total) - (N/A 40P)

WARRANTY



Floorplan	GVWR (lbs.)	GCWR (lbs.)	Front GAWR (lbs.)	Rear GAWR (lbs.)	Tag GAWR (lbs.)	Wheel Base	Overall Length	Exterior Height w/ A/C & Satellite	Exterior Width	Interior Height	Fresh Water Capacity (gal.)	Grey Waste Water Capacity (gal.)	Black Waste Water Capacity (gal.)
40P	41,000	51,000	17,000	24,000	N/A	261"	40' 11"	12' 11"	101"	84"	100	62	41
44B, 44D, 44R, 44W, 44Z	49,000	64,000	17,000	20,000	12,000	320"	44' 11"	12' 11"	101"	84"	100	62	41

It is important for your safety and enjoyment that you are aware of the weights and tow ratings of the RV you select. Consult a competent advisor for questions or advice. Whether you are new to RVing or a veteran, get a feel for the performance of your RV before heading out on the roadways. When you tow a vehicle with your RV, you must drive differently than when you drive a single vehicle. Practice hooking up, driving, backing up and braking in a safe environment or seek out professional instruction. Jayco affixes a weight label to each RV which lists weight information for that vehicle. Refer to that label to verify the vehicle will meet your requirements. Gross Vehicle Weight Rating (GVWR): The maximum permissible weight of the motorhome, including the Unloaded Vehicle Weight (UVW) plus passengers, personal items, all cargo, fluids, options and dealer-installed accessories. The GVWR is equal to or greater than the sum of the UVW and the Cargo Carrying Capacity. Gross Combined Weight Rating (GCWR): The maximum allowable combined weight of the motorhome used as a tow vehicle and the attached towed vehicle.



Part of Jayco Family of Companies

Entegra Coach, Inc., P.O. Box 460, Middlebury, IN 46540, www.entegracoach.com. See dealer for further information and prices. All information in this brochure is the latest available at the time of publication approval. Entegra Coach reserves the right to make changes and to discontinue models without notice or obligation. Photos in this brochure may show optional equipment and props for photography purposes. RVs built for sale in Canada may differ to conform to Canadian codes. ©2023 Entegra Coach, Inc. Printed in U.S.A. 2032657



entegracoach.com/aspire