



**AIRSTREAM**<sup>®</sup> Interstate 24X

2023 TOURING COACHES



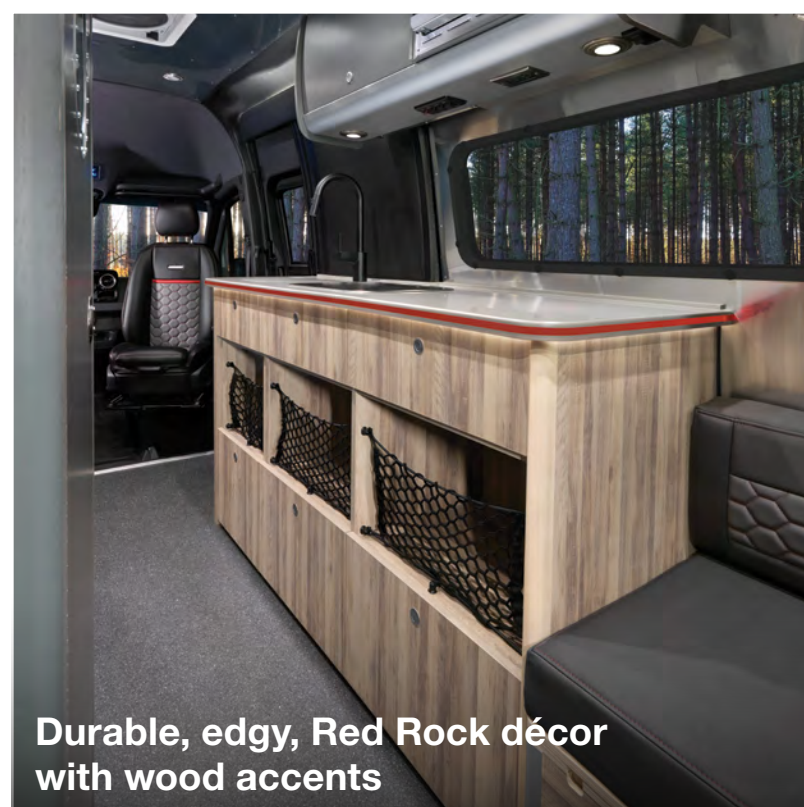


## About Interstate 24X

The future of adventure is here in the Airstream Interstate 24X. Built on the powerful Mercedes-Benz® Sprinter van chassis, the rugged and capable Interstate 24X features the amenities, quality, and craftsmanship you expect – plus dozens of new enhancements that are as flexible as they are functional.

Travel with the dependability of Mercedes-Benz power and performance under the hood. Advanced technology throughout the cockpit – including in-dash controls, power seats, and more – lets you focus on the adventure ahead. Active safety systems, side and rear cameras, and the most airbags in any Mercedes-Benz model ensure passengers arrive safe and secure, while push-button controls provide powerful convenience.

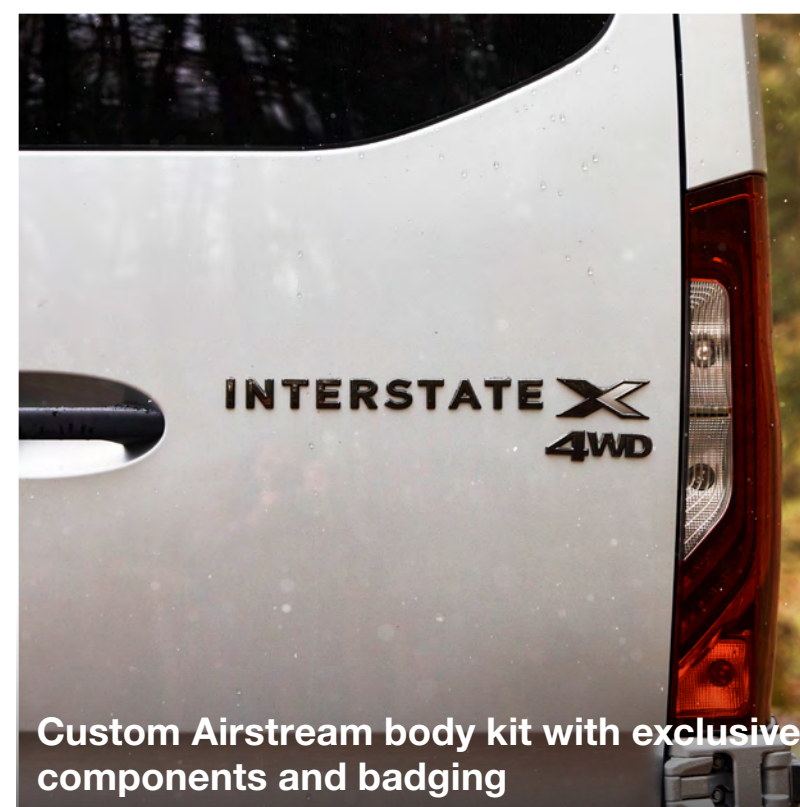
Airstream's first true adventure van, Interstate 24X is loaded with features that let you bring along everything you need for an epic experience. The Aluminum Aircraft L-track Storage System on the walls, ceiling, and floor creates a highly flexible storage solution for bikes, fishing gear, kayaks, and more. When you arrive at your destination, easily set up the convertible interior space in your perfect combination of bench seating, bedding, and living space. And with Airstream's legendary craftsmanship and interior design, you've got all the comforts of home – no matter how far away you travel.



Durable, edgy, Red Rock décor with wood accents



Rugged styling with a protective coating around the front, rear, and side

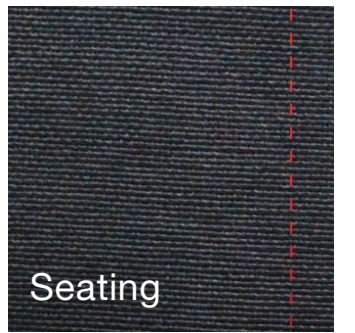


Custom Airstream body kit with exclusive components and badging

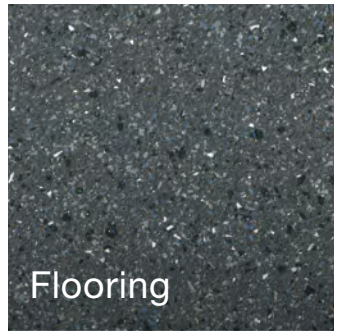


# Décor

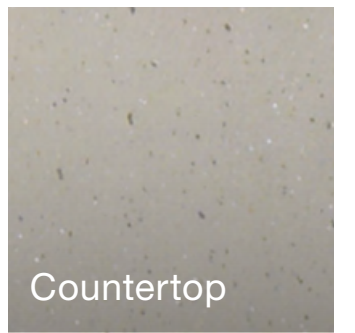
“ This is the adventure van I’ve dreamed of – everything I need to get out and enjoy the outdoors, and plenty of flexibility to bring along the gear I need.” **ANDY** Interstate 24X Owner



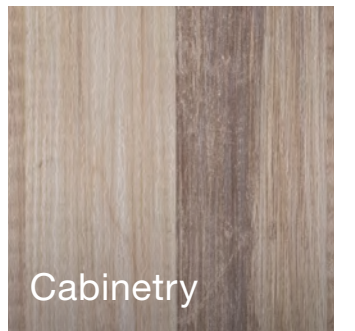
Seating



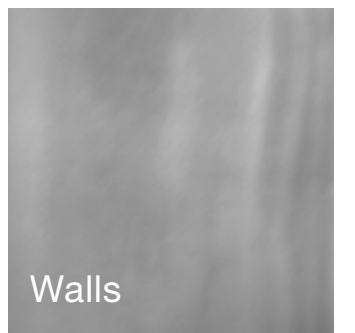
Flooring



Countertop



Cabinetry



Walls

## Red Rock





## Exterior Color



### Iridium Silver Metallic

Sleek and modern exterior color with protective coating around front, rear, and sides





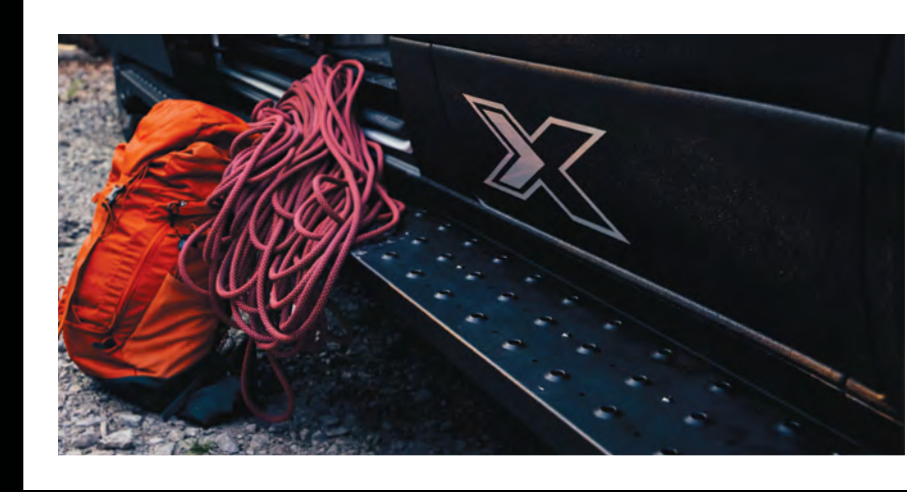
## Floor Plan

Rugged, functional, sleek, and stylish, the interior of Interstate 24X is fully loaded with on-board systems that upgrade your adventure. Inside the Interstate 24X, Airstream comfort and quality form the foundation of your next road trip. A bathroom, a kitchen, and the largest sleeping area in any Class B recreational vehicle mean you're truly traveling with the comforts of home, while flexible options for seating, dining, and working allow you to make the adventure your own.



# Exterior Features

Built on the powerful performance of the legendary Mercedes-Benz Sprinter van chassis, the Interstate 24X is packed with exterior features that prioritize comfort and maximize outdoor adventure. Premium Air Ride Suspension provides the smoothest ride available, while two 100 Ah deep cycle lithium batteries, roof-mounted solar panels, and enhanced power system components ensure you have the power you need for the adventure ahead.



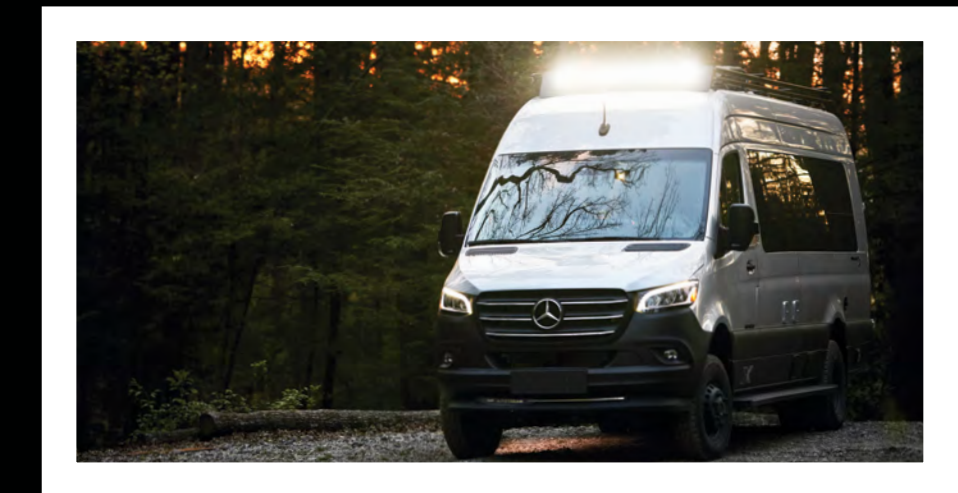
**1** Matte black running boards allow for easy entrance.



**2** 4-Wheel drive comes standard to enable more off-road adventures.



**3** Air Ride Suspension comes standard, so you can enjoy a smooth ride, mile after mile.



**4** Exterior lighting provides safety, security, and enhanced nighttime navigation.



**5** Powered armless patio awning extends with push-button ease.



**6** Sliding door and screen system lets breezes in while keeping bugs out.



# Specifications

Chassis	3500 EXT 4x4 Silver
Engine	Mercedes-Benz® 3.0L V6 Turbo Diesel
Emissions	BlueTEC SCR Technology, 50 State – EPA/CARB Standards
Horsepower	188 HP / 325 lbs torque
Transmission	7 Speed Automatic
Axle Ratio	3.92
Wheelbase	170"
MPG*	16-18 Estimated Highway
Chassis Safety System	Mercedes-Benz® Adaptive ESP® (Electronic Stability Program)
GVWR/GCWR	11,030 lbs/15,250 lbs
UBW	9,545
OCCC	1,485 lbs
Tow Package	Mercedes-Benz® Hitch, 7 Pin Trailer Plug, Brake Control Pre-wired
Tow Capacity**	Up to 5,000 lbs
Trailer Safety System	Mercedes-Benz® Trailer Stability Assist System
Overall Length	24 ft. 6 in.
Overall Height	9 ft. 9 in.
Overall Width	6 ft. 7 in.
Interior Height/Width	6 ft. 2 in. / 5 ft. 10 in.
Tank Capacities	23 gals (Fresh), 24 gals (Grey), 11 gals (Black)
LPG	9.8 gals (41.5 lbs) 80% fill
Diesel Fuel	24.5 gals
Air Conditioner	13,500 BTU
Furnace	Diesel Fired Hydronic System
Water Heater	On-Demand Diesel Fired Hydronic System
Heated Tanks	Fresh and Grey Tanks (12 volt)

Refrigerator & Freezer	5.0 cu. ft. Fridge/1.6 cu. ft. Drawer Freezer (12 volt)
Microwave	0.7 cu. ft. Locker Microwave
Cooktop	2 Burner with Integrated Cover
Safety Components	LP Gas Detector, Smoke and CO <sub>2</sub> Alarm, Fire Extinguisher and First Aid Kit
Plumbing System	Macerator Pump System
TV Antenna	Directional In-motion VHF/UHF
TV Cable	Cable TV Outlets/Hook-ups
TV Satellite	Pre-wired for Satellite Dish
Connected 5G Antenna	Pre-wired for Airstream Connected
Electrical System	Touch Screen/Touch Pad Electronic Controls with Energy Management
Converter/Inverter	50 amp Multi-stage Charger, 2,000 Watt Pure Sine Inverter
Generator	2.5 kW (LPG) with Auto Start and Ultra Quiet Resonator
Batteries (Coach)	2 – 100 Ah Deep Cycle Lithium Batteries (LiFePO4)
Shore Power	30 amp/110 Volt Service
Solar Power	400 Watt Total (100W Chassis / 300W House)
E1 Package	OPT
Hydraulic Leveling Jacks	OPT
Front Bed System	OPT
Support	3 Year 24/7 Coach-Net® Roadside Assistance
Warranty***	3 Years/36,000 Miles Airstream 3 Years/36,000 Miles Mercedes-Benz® 5 Years/100,000 Miles Mercedes-Benz® Engine

## Safety

Multiple Safety Air Bags	STD
Active Brake Assist	STD
Active Lane Keeping Assist	STD
Active Cruise Control Assist	STD
Active Driver Attention Assist	STD
E-Call Assist	STD
Traffic Sign Assist	STD
Wet Wiper System	STD
Rear Camera Assist w/Always-On Viewing & Adjustable Angle	STD

## Exterior

Silver (MB Iridium) with Black Package	STD
Durable Black Protective Coating (lower side moldings)	STD
Durable Black Protective Coating (front & rear bumpers)	STD
Durable Black Protective Coating (front air dam)	STD
Durable Black Wheels	STD
All Season-All Terrain Rugged On/Off Road Tires	STD
Black Running Boards (driver/passenger side)	STD
Black Roof Rack	STD
Black Power Armless Patio Awning (14 ft.) w/ LED Lighting	STD
Off-Road Front HD LED Light Bar	STD
Camp Pod LED Lighting (side and rear)	STD
Under-Carriage LED Lights	STD
Exterior Outdoor Table/Table Mount	STD
Exterior Shower	STD
Exterior Sliding Screen Door (side)	STD
Exterior Zippered Screen System (rear)	STD
Exterior Gear Wash Station (rear)	STD
Portable Air Compressor	STD

## Interior

Seats 6	STD
Sleeps 2	STD
Red Rock Décor	STD
Airstream Aluminum (walls, ceiling, window trim)	STD
Colorado Black UltraLeather with Stone Inset (front seats)	STD
Simtex Marine-Grade Carbon Gray (rear seating/sleeping)	STD
Rugged Grey Flooring (waterproof, stain and scratch resistant)	STD
Flush Mount Matte Finish Cabinets	STD
Flex Bed System (6'8" X 5'8" King or Twin)	STD
Rear Convertible Space (sleeping, living, working, storing,...)	STD
Modular Table System (four mounting positions inside/outside)	STD
Bathroom (heated wetbath with toilet, shower, sink)	STD
Galley (solid surface countertop w/edge band lighting, sink, storage)	STD
Security Safe	STD

## Interior Storage

Aluminum Aircraft L-Track Storage System (Ceiling, Floor, Walls)	STD
Flex Storage Solutions (hang, secure, tie-down, cinch gear)	STD
Oversize Center Aisle Storage (16' for kayak, surfboard, bikes, ...)	STD
Overhead Storage Compartments/Solutions	STD
Lower Storage Compartments (under seating)	STD

\*\*\* Actual mileage may vary due to load, driving style, and overall conditions.

\*\*\* Typical tow capacity will range from 4,200-5,000 lbs dependent upon build spec and intended vehicle loading with people, cargo, and fluids.

\*\*\* New Vehicle Limited Warranty. Individual components may vary. See Owners Manual for specific warranty coverage and information.



# Why You'll Love It

Interstate 24X is built to withstand the rigors of your adventurous lifestyle. Go further than you ever dreamed with a 3.0L V6 Turbo Diesel engine that packs 188 horsepower and 325 pounds of torque. And with a towing capacity of up to 5,000 pounds, you can bring along toys, trailers, or even your Airstream travel trailer.

Large wheels and tires help you tackle rougher terrain and provide ultimate stability and traction.

Expansive solar power lets you stay off grid longer than ever, while an outdoor shower lets you clean up yourself and your gear before heading inside.

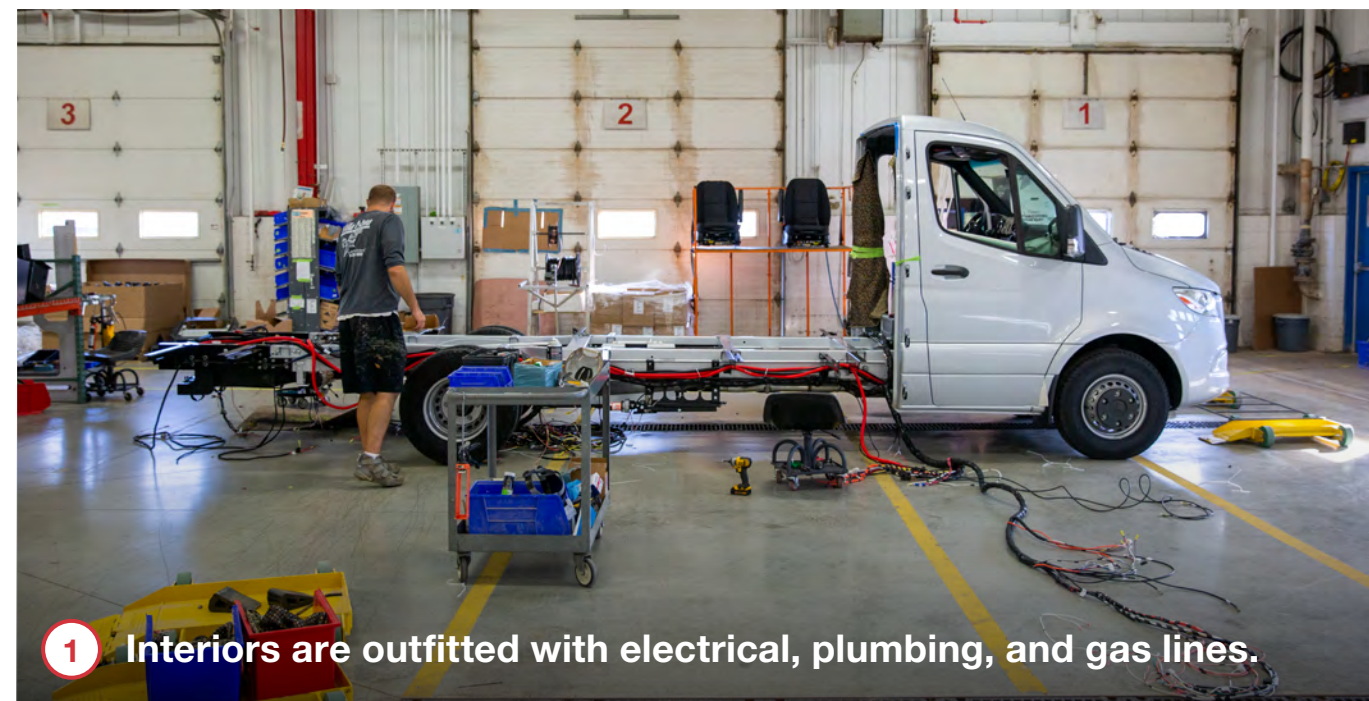
A versatile interior L-track storage system lets you secure gear, bikes, and more with ultimately simplicity.





# How It's Made

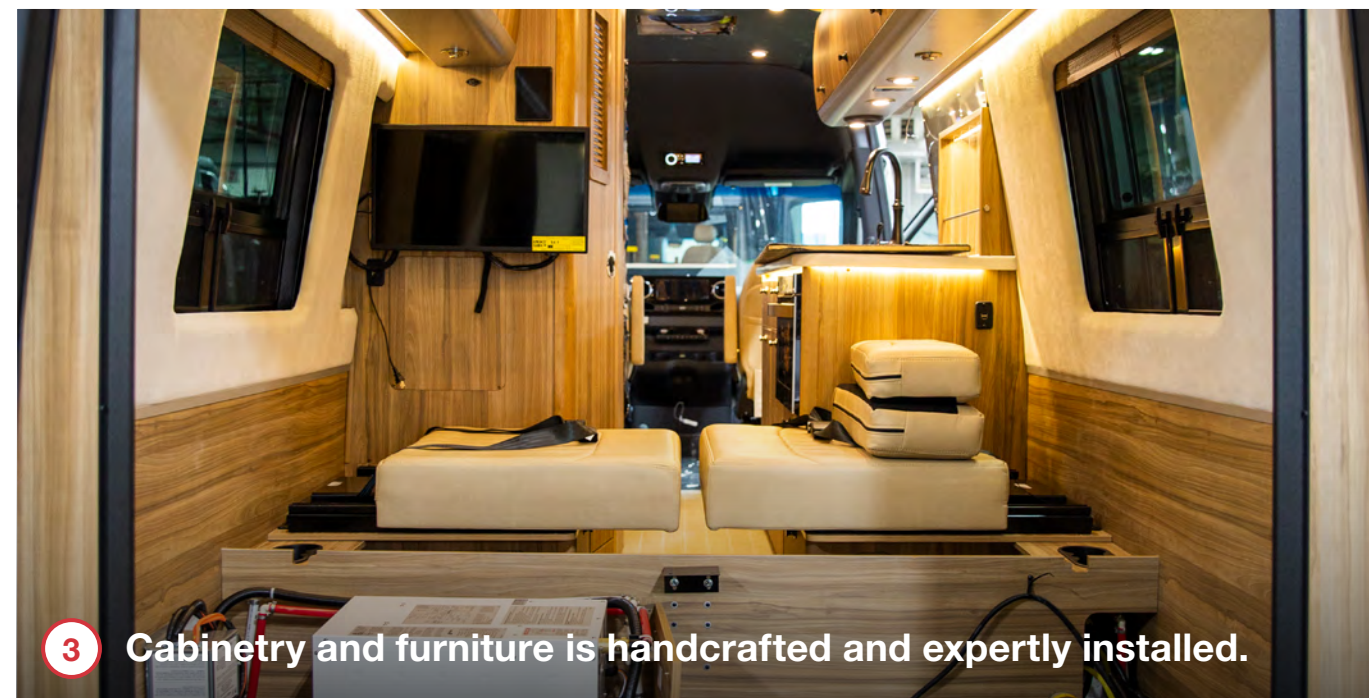
Each Mercedes-Benz Sprinter van chassis arrives in Jackson Center, Ohio fully loaded with safety and security features and one of the most powerful and dependable engines under the hood. Our expert craftspeople add external features like RV windows, vents, air conditioners, awnings, and undercarriage features like generators, holding tanks, and batteries. Standard seats are removed and re-upholstered with plush Ultraleather, while the interior is outfitted with electrical wiring harnesses, plumbing, gas lines, and insulation. We hand-craft every cabinet and storage locker in our woodshop, which is then installed alongside showers, beds, tables, and kitchen appliances. Every Airstream touring coach is put through an extensive water check to ensure there are no leaks before quality inspection teams test every component, system, and function before it goes out the door to a customer.



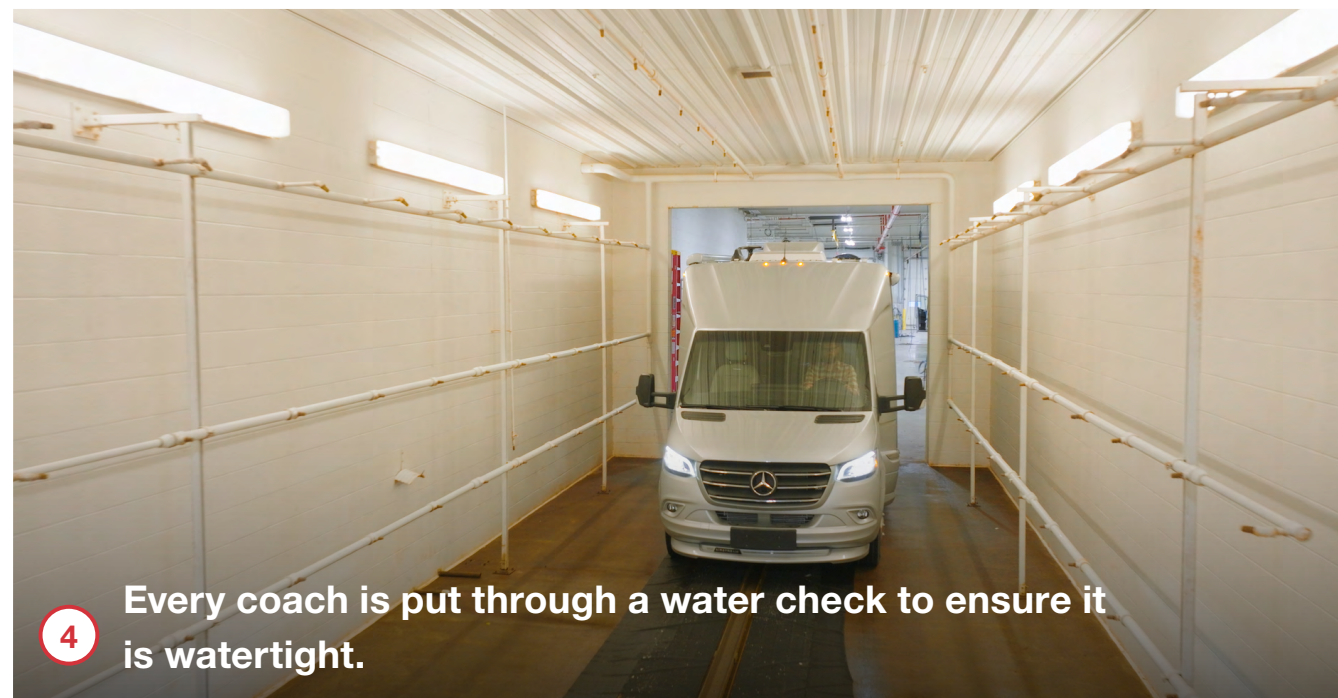
1 Interiors are outfitted with electrical, plumbing, and gas lines.



2 Seating is upholstered in-house with Ultraleather fabric.



3 Cabinetry and furniture is handcrafted and expertly installed.



4 Every coach is put through a water check to ensure it is watertight.



419 West Pike Street,  
P.O. Box 629  
Jackson Center, OH  
45334 USA  
937-596-6111

[www.airstream.com](http://www.airstream.com)

# **AIRSTREAM<sup>®</sup>** **+** **Mercedes-Benz<sup>®</sup>**

## Roll with the Best<sup>®</sup>

Product information, specifications, and photography in this brochure were as accurate as possible at time of printing. Photographs may contain some features that are optional on your vehicle.

Since we continually strive to improve our products, actual products may differ. Prices and specifications are subject to change without notice. All capacities are approximate and dimensions are nominal. Some features or options may be different or unavailable in other countries.

Warning – This information is intended as a guide only. Weights of individual vehicles may vary. Consult your owner's manual for complete loading, weighing, and towing instructions. Do not overload the travel trailer.

AIRSTREAM<sup>®</sup>, the Airstream travel trailer trade dress, and all related model names, slogans, logos, trade dress, and trademarks are owned or used under license by Airstream, Inc. All other trademarks are owned by their respective owners.