

PARK MODELS



USE OUR DESIGN CENTER/INTERACTIVE BUILDER BY SCANNING THIS QR CODE

CAVCO FAIRMONT Park Model RVs

150

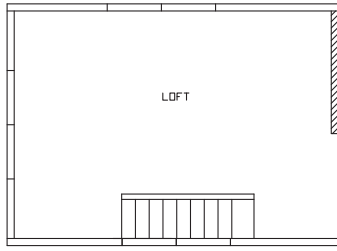


190006 SHOWN

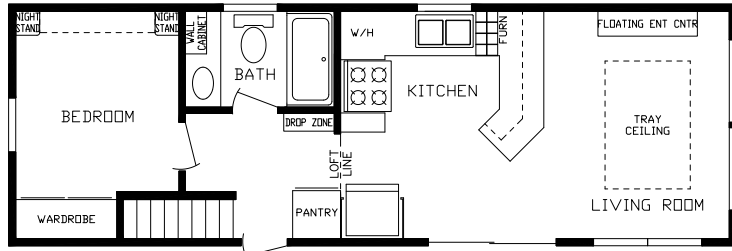


JUST PARK IT

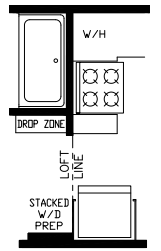
"Build Your Own Unit" at fairmontparkmodels.com



190000 Loft



190000



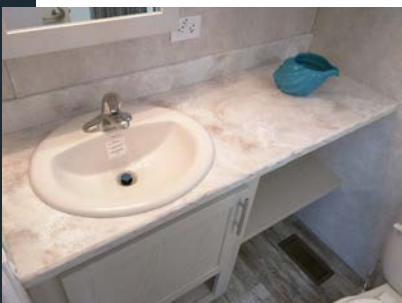
©
R01 Opt
Washer/Dryer
Prep

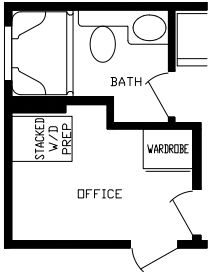
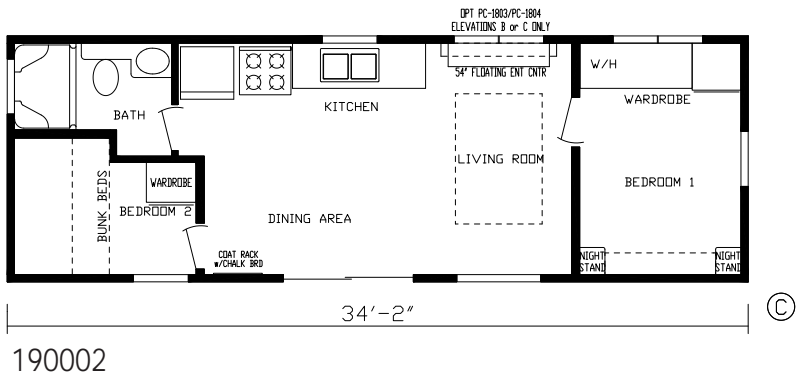


Opt Front End on 190000,
190002, 190005, 190006,
190008, 190009



Std Front End on 190000,
190005, 190006, 190008,
190009





R01 Opt
Washer / Dryer
Prep

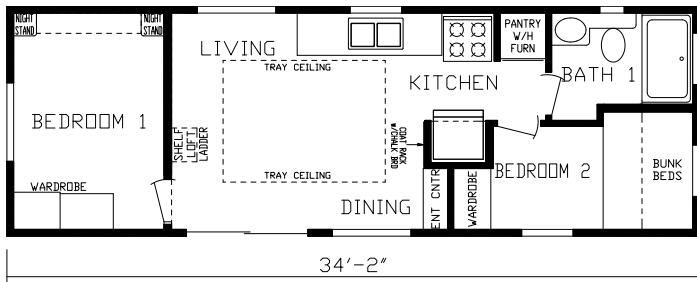
PEW-222 Std Front End on 190002



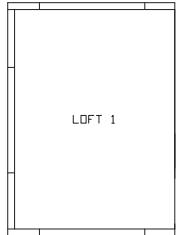
PORCH & AWNING ADDED ON SITE BY OTHERS



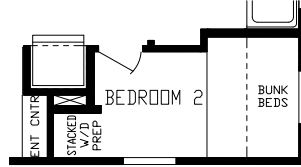
CAVCO 150



190004



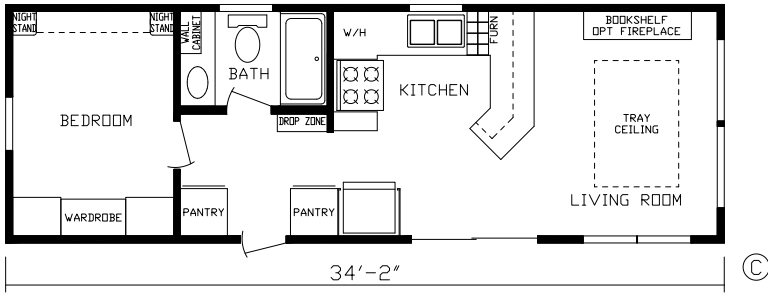
190004 Loft



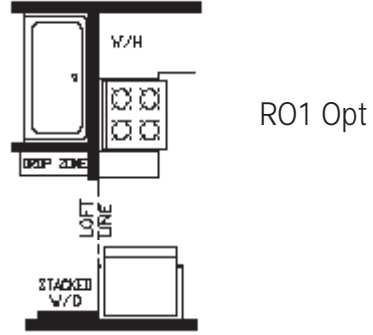
R01 Opt
Washer / Dryer
Prep



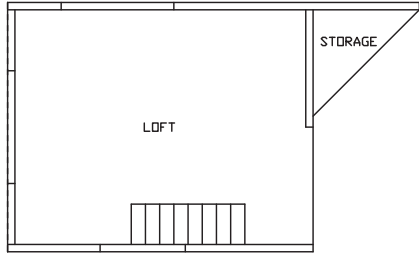
GET MORE FOR WHAT YOU PAY



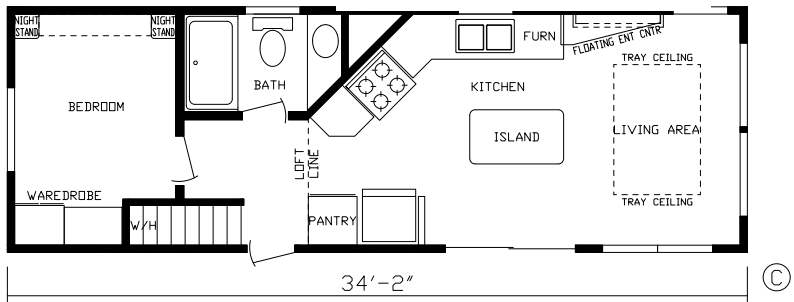
190005



R01 Opt

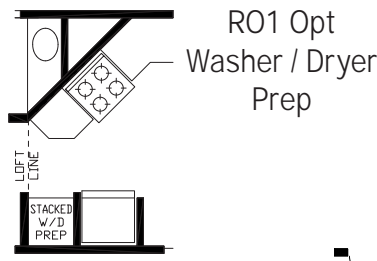


190006 Loft



190006

Std Front End on 190006



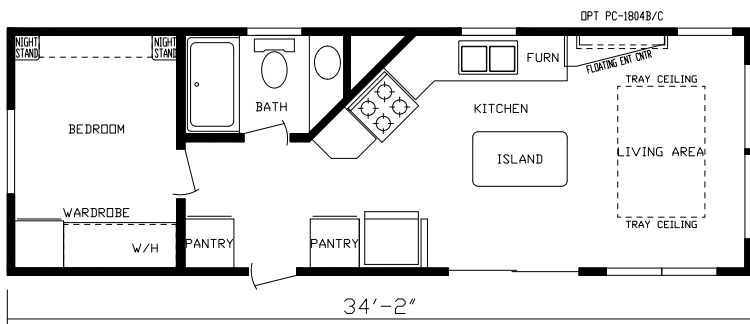
R01 Opt
Washer / Dryer
Prep



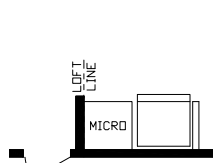
R02 Opt
Combo
Washer/Dryer Prep



CAVCO 150



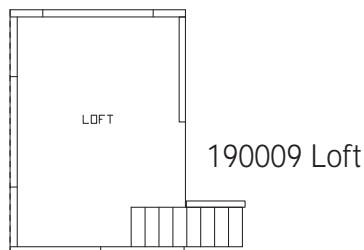
190008



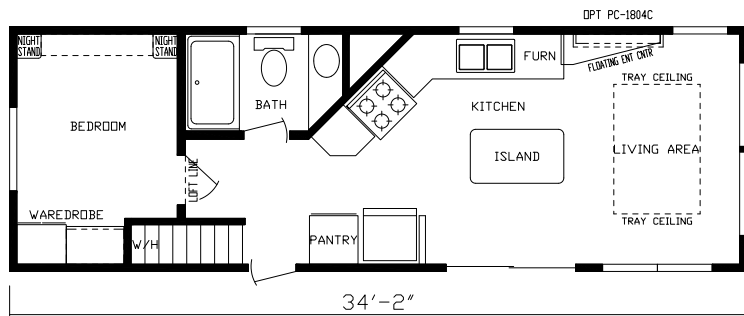
R01 Opt Combo Washer/Dryer Prep



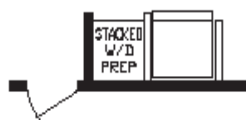
R02 Washer/Dryer Prep



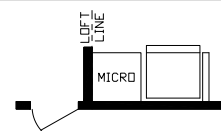
190009 Loft



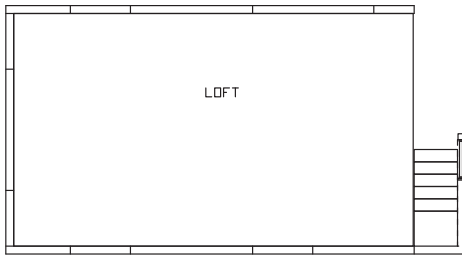
190009



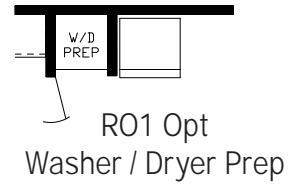
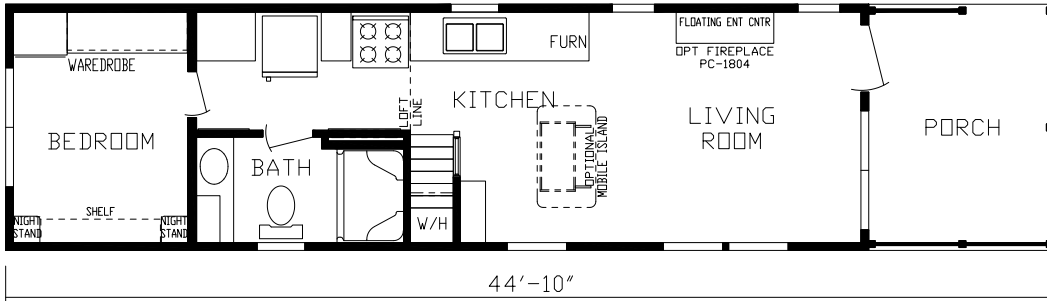
R02 Washer/Dryer Prep



R01 Opt Combo Washer/Dryer Prep



190011 Loft

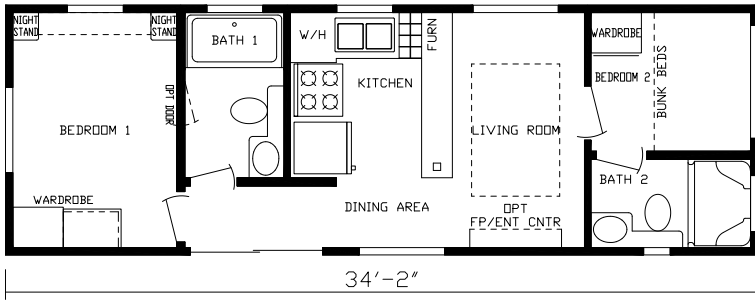


©

190011



CAVCO 150



190012



R01 Opt Entry





USE OUR DESIGN CENTER/INTERACTIVE BUILDER BY SCANNING THIS QR CODE

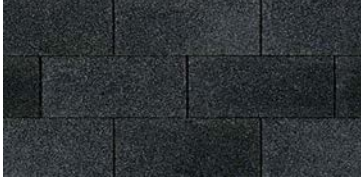
Roofing



TruDefinition Duration Series Shingles with SureNail Technology

INNOVATIONS FOR LIVING.™

Supreme 25 Year Warranty — **Standard in CAVCO 150**



Onyx Black



Estate Gray



Driftwood



Chateau Green

Oak Ridge Pro Architectural Shingles — **Upgrade in CAVCO 150**



Onyx Black



Estate Gray



Driftwood



Chateau Green

Metal Roofing



Lineals

Standard on Cavco 150 on Doorside & Hitch End;



Charcoal



Hunter



Brown



Galvanized

Standard



Cypress



Harvard Slate



Wicker



Pebble Clay



White

ROYAL Building Products

Siding

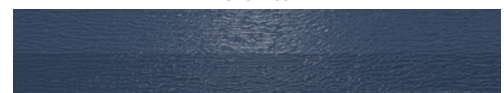
Upgrade



Redwood

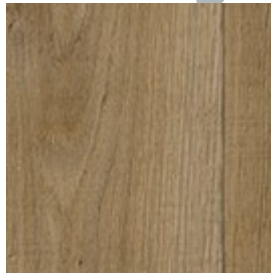


Granite



Marine Blue

Floor Vinyl *Congoleum*



Aged Oak-AF-020



LX-330 Westport Harbor



DF9630 Vintage Plank



LX275 Barn Wood
Vintage White



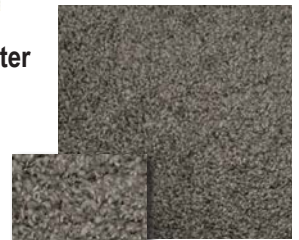
LX277 Barn Wood
Greige



Shake It Up 25 oz. Polyester



Rodeo



Silver Smith



Balboa Mist



Onyx



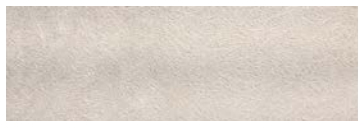
Toffee



Baltic

Fabric

Wall Vinyl



Opulence Grey



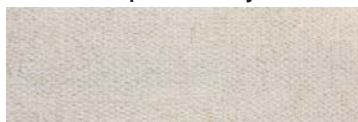
Burlap Grey



Natural Driftwood



Suede Grey



Canvas Natural



Wide Painted Pine



Douglas Mocha



Brigade Twilight

Counter Tops

Backsplashes & Accents

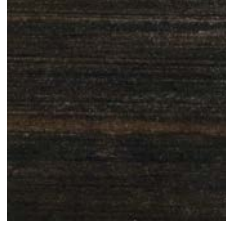
Standard



Winter Carnival



Bernard Granite



Bronze Steel



Potter's Clay



Calcutta Marble



Ice Granite

Upgrade



Dolce Vita

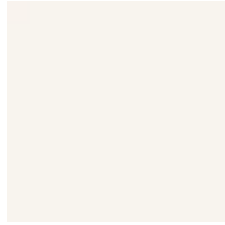


Antique Marula Pine

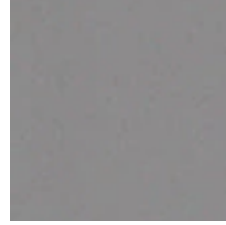


Azul Aran

Upgrade



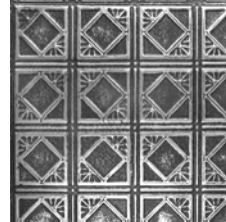
Artic White
3"x6"



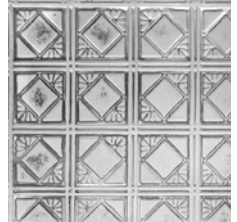
Suede Grey
3"x6"



Black
3"x6"

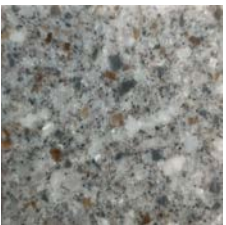


Silver Washed
Pewter Tin



Silver Washed
White Tin

Solid Surface Upgrade



Pinnacle



Ocean View

Upgrade — Accents Only

Timberwood-Backsplash
and fireplace



Trim



Java Trim



Ibis Trim



White Trim

Hardwood



Rustic Shore Shaker



Cottage Slate Shaker



Vintage Shaker



Stonehenge Shaker

Cabinets



GENERAL

- 8" Steel I-Beam Construction
- 30 PSF Rafters, 16" O.C.
- 7/16" Roof Decking
- 2" x 4" Sidewalls, 16" O.C.
- 7/16" OSB Sheathing Under Siding
- ½" Residential Tape & Textured Drywall Ceiling
- ½" Drywall Décor Vinyl Covered Walls
- 2" x 6" Transverse Floor Joist 16" O.C.
- 19/32" OSB Tongue & Groove/Glued & Screwed 4' x 8' Floor Decking
- Steel Strapping from Truss & Floor to Sidewall
- Pet Center per Plan
- Bunk Mattresses per Plan

FLOORING

- Shaw® Carpet in Loft & at Stairway per Plan
- 5 lb. Rebond Pad
- Congoleum® Roll Goods Bath, Kitchen, Flat Floor Bedroom & Living Room

HEATING

- 40,000 BTU Gas Furnace
- 5" x 12" Residential Aluminum Heat Ducts
- 4" x 10" Floor Registers

ELECTRICAL

- Porch Light at Exterior Doors
- GFI Breakers Per Code
- 50 Amp Service w/25' Supply Cord
- Safe House Pkg. – Smoke Detector, LP Detector, Fire Extinguisher, & GFI Receptacles
- (1) Exterior GFI Receptacle - Doorside Waterproof
- Underbelly Receptacle Near Fresh Water Inlet for Heat Tape or Heated Hose
- Recessed Overhead LED Lights Throughout
- TV Jack at LR Entertainment Center
- USB Port & Recept at Bedroom Nightstands
- Lighted Ceiling Fan Living Room & Master Bedroom – Non Loft Models
- Lighted Ceiling Fan Living Room – Loft Models

DOORS

- Raised 6-Panel White Interior Passage Doors
- 10 Lite Rear Door w/Deadbolt & Storm – Per Plan
- Vinyl Thermopane Patio Door per Plan

PLUMBING

- Double Bowl Stainless Steel Kitchen Sink
- High Arch Kitchen Faucet w/Pull Out Sprayer
- 20 Gallon Electric Water Heater w/Exterior Access Door
- Residential Ceramic Commode

BATHROOM

- Exhaust Fan
- Porcelain Lav Bowl
- Mirror
- 1 Piece Tub/Shower per Plan
- Window per Plans

INSULATION

- R-19 Blown Insulation in Roof
- R-13 Fiberglass Kraft Backed Insulation in Sidewalls
- R-11 Fiberglass Insulation in Floor
- HomeGuard™ Exterior Weather House Wrap Wind Barrier

CABINETRY

- 4 Cabinet Color Choices
- Hardwood Shaker Cabinets & Stiles – Pocket Screwed
- 40" Overhead Cabinets – Hardwood
- European Style Hidden Cabinet Hinges
- Side Mounted Metal Drawer Guides w/Dovetail Wood Construction
- High Pressure Dual Laminated Countertops & Backsplash
- Tip Out Trays at Kitchen Sink
- Adjustable Overhead Shelving
- Bedside Nightstands w/Receptacle, USB Port & Overhead Cabinets
- Floating Entertainment Center LR– Per Plan w/ TV Jack

DÉCOR

- Fabric Window Valances in (3) Decor Choices (Blue, Brown & Grey)
- 2" Blinds, Selected Windows
- Residential Crown Molding & Door Trim
- 1/2" Residential Textured Drywall Ceilings (Better Insulated & More Sound Proof)
- Coat Rack w/Board Accent Wall
- Convenient Chalk Board over Coat Rack
- Residential Crown Molding & Door Trim
- Ceiling Tray w/Accent VOG

APPLIANCES

- Stainless Steel Whirlpool® Appliances
- Whirlpool® Frost Free Refrigerator
- Whirlpool® 30" Gas Range
- Glass Canopy 30" Stainless Steel Range Hood
- Microwave per Plan

EXTERIOR

- Detachable Hitch
- Royal Dutch Lap Vinyl Siding
- Exterior Wainscot (3/4 Color & 1/4 Different Color)
- Owens Corning® 25-Year Roof Shingles
- Ice & Water-Weather Lock Under Shingles — Full Roof Coverage
- Ventilated Soffit
- Ridge Vent
- Residential Step Flashing at Dormer Transition
- Innovent® Vent Chutes in Roof
- Woven Shepweave Underbelly
- Lineals – Doorside & Hitch End (White)

WINDOWS

- Kinro® Egress Windows in All Bedrooms
- Kinro® Thermopane Vinyl Dual Glaze Low E White Single Hung Gridded Windows
- Transom Windows LR, Loft & Bedroom per Plan

POPULAR OPTIONS

- 1-Color Exterior Siding – No Wainscot
- White Vinyl Exterior Corner Posts
- Awning Rail (Omit Lineals)
- Pro Pac Air Conditioning - 13.5K BTU
- Wall Mount Loft Air Conditioner
- Metal Roof
- Metal Underbelly
- 100 amp Service (Direct Wire - No Power Cord)
- 26" or 48" Fireplace - with or without Stone. 26" Fireplace all models. 48" Fireplace 00,02 & 05 only
- Vertical Blind for Patio Door
- 16 Gallon Gas/Electric/DSI Water Heater
- Glass Tub/Shower Door
- Shower IPO Tub/Shower
- Lighted Medicine Cabinet over Bath Lav
- Black Hardware
- Black Faucets
- Ceramic Backsplash - Kitchen & Bath
- Stainless Steel Farmers Sink per Plan
- Solid Surface Countertops
- Queen Slide-a-Bed Sofa
- Recliner
- Movable Island & (4) Chairs or Stools
- Dinette Table w/(4) Chairs
- Queen Bed (Metal Frame, Box Spring & Queen Mattress)
- Pillow Top Mattress
- Sectional w/Sleeper Sofa
- Bedspread, Pillows, & Shams in (3) Color Choices to Match Decor
- Bunk Spreads (Match Decor)
- End Tables
- Washer/Dryer Prep per Plan
- Stainless Steel Farmers Sink on 04,06,08,09 & 011 models only



JUST PARK IT
fairmontparkmodels.com



WHAT'S IN YOUR PARK MODEL?

All descriptive representations are believed to be accurate at the time of publication. However, due to product improvement and changes in suppliers, design and production may vary. Note: Fairmont Homes reserves the right to make changes in price, colors, materials, components, and specifications and to discontinue models at any time without notice or obligation. Fairmont Homes assumes no responsibility for any error in type, print reproduction, specifications, or floor plans in this or any print material.

©01/2023 Fairmont Homes, LLC, ALL RIGHTS RESERVED