

CLASS-A

ALLEGRO RED 340

MODEL YEAR 2023 | PRODUCT UPDATES

Initial MY2023 Model Change Plans, Subject to Change in Full Production

Date Revised: 3/8/22

TIFFIN

20
23

Premium Paint System

Our eight-step, full-body paint system features premium grade paints sealed with three layers of superclear coat with ultraviolet protection. An additional layer of high-performance film protects the front of the coach and select areas.

NO LONGER AVAILABLE

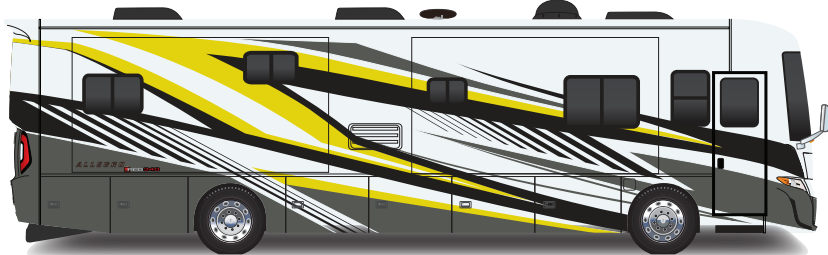
- Generation 1 Paint Schemes

Initial MY2023 Model Change Plans, Subject to Change in Full Production

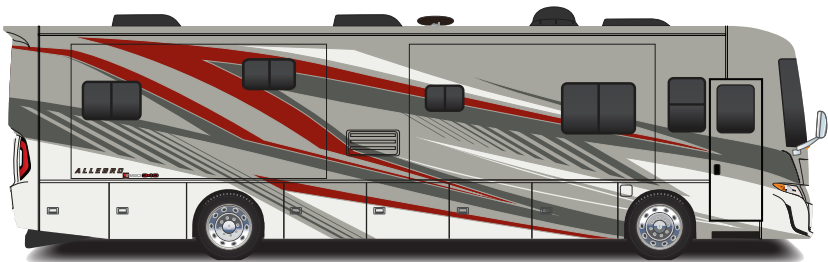


50TH ANNIVERSARY

NEW

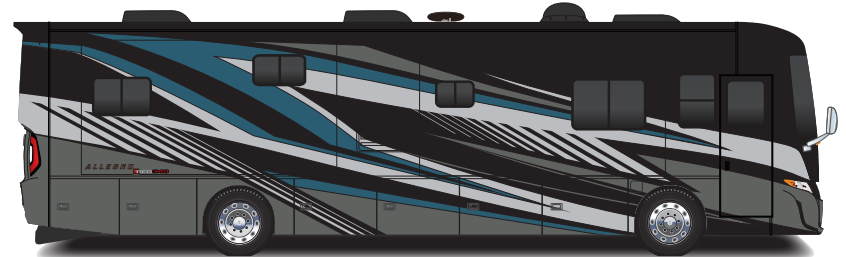


NEW



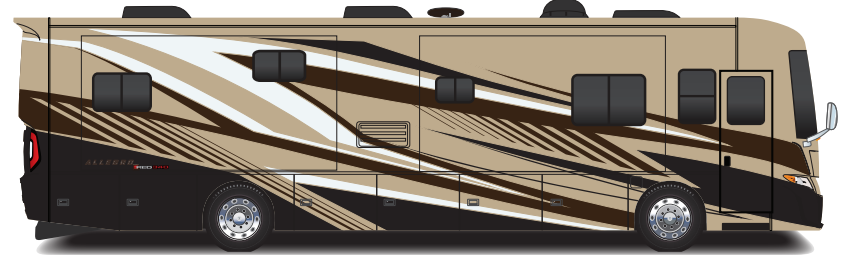
G2 SCARLET THUNDER

NEW



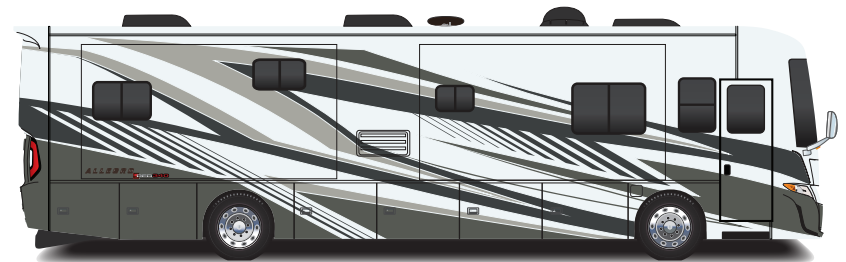
G2 EURO BLUE

NEW



G2 ROCKY MOUNTAIN BROWN

NEW



G2 FROSTED GRANITE

Floor Plans



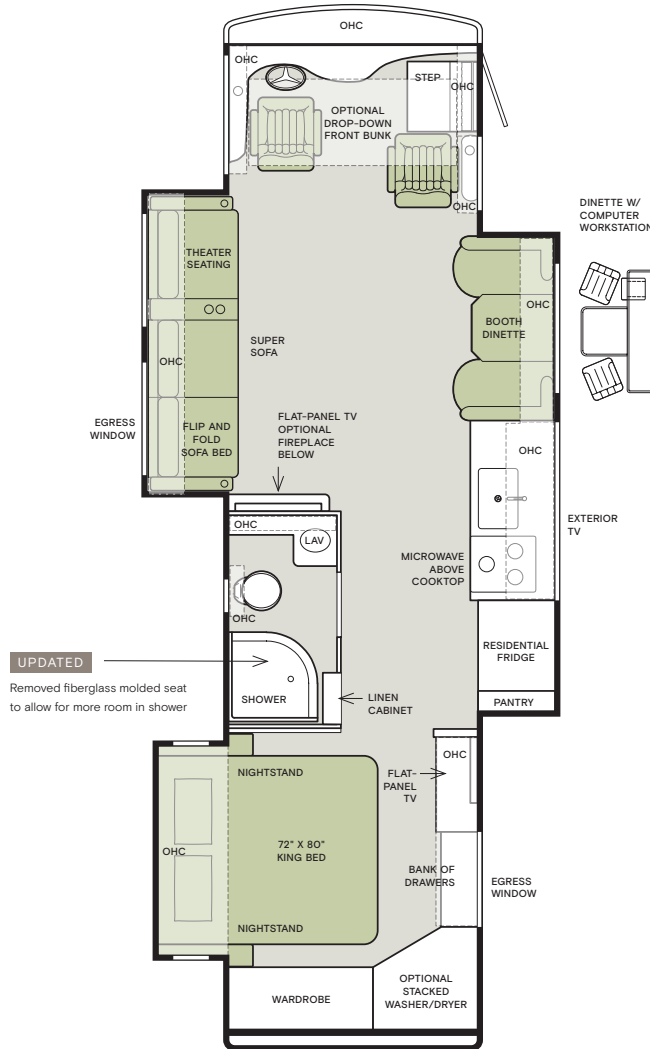
The design of every Allegro RED 340 floor plan must meet four essential criteria: Maximum space, Optimal organization, Relaxation plus, and Elegant atmosphere. Tiffin's MORE Plans offer your family the most comfortable layout for life on the road.

If optional furniture combinations are selected, window locations may vary from diagram shown.

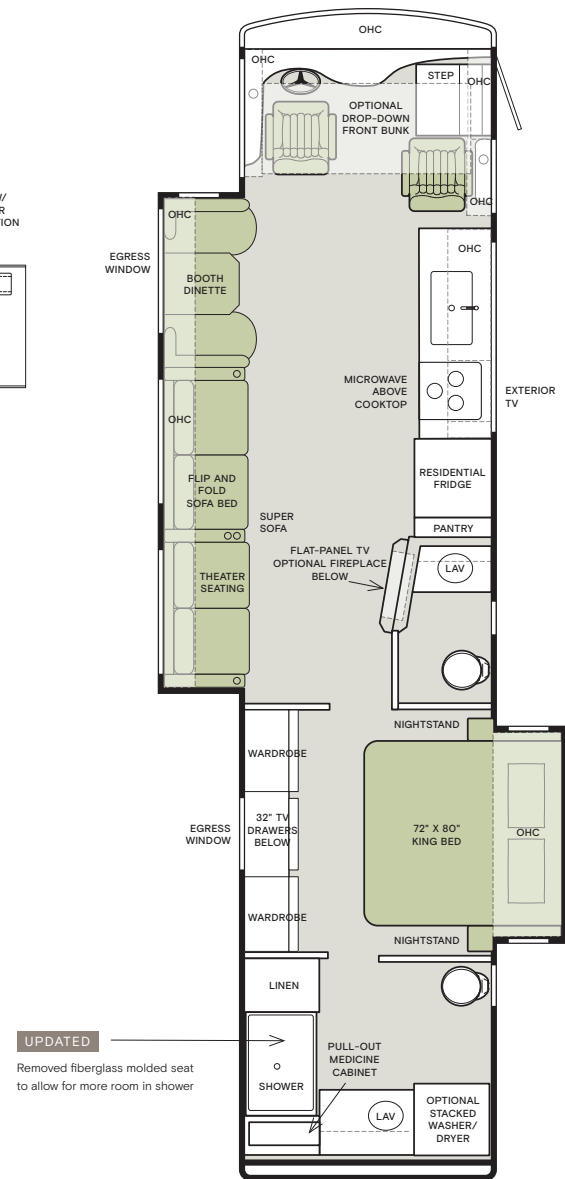
All options may not be available in every model. Because of progressive improvements and specifications, standard and optional equipment are subject to change without notice or obligation.

For a complete and up-to-date list of available options and specifications, visit tiffinmotorhomes.com.

33 AL



38 LL



Interior Décor

Make your experience on the road all your own. Express yourself by choosing the interior appointments such as cabinet finishes, flooring, and décor ensembles for every part of your motorhome. In the 2023 Allegro RED 340, you'll be able to travel in style no matter where you go.

CABINETS



NATURAL ALDER

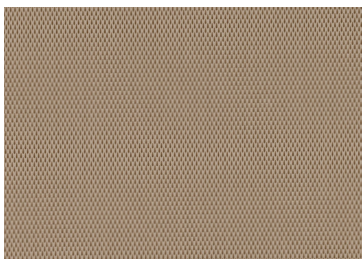
FLOORING



SEAGRASS Matte Finish Tile

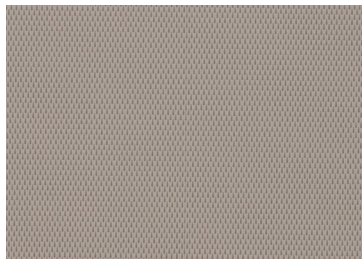
NEW

ULTRALEATHER



TRAIL (S)

NEW

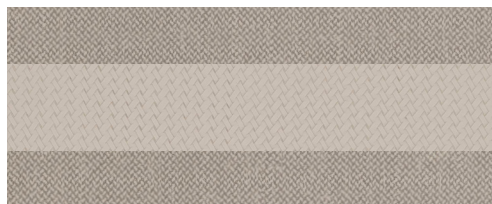


TAUPE HILL (O)

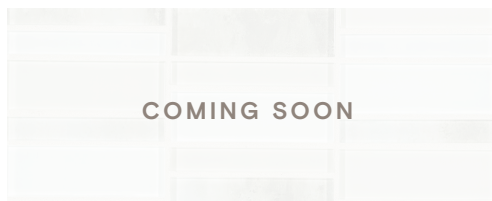
NEW

MOONDANCE

NEW

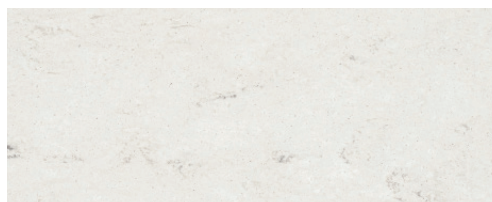


WINDOW TREATMENT



COMING SOON

BACKSPLASH



COUNTERTOP



LIVING ROOM



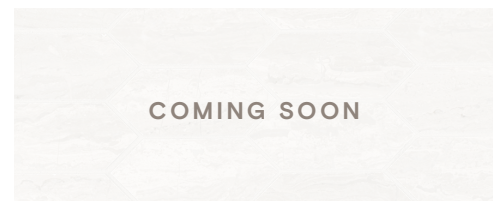
MASTER SUITE

STONEWASHED

NEW

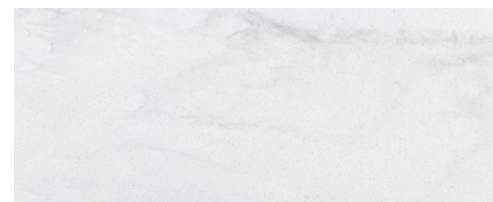


WINDOW TREATMENT



COMING SOON

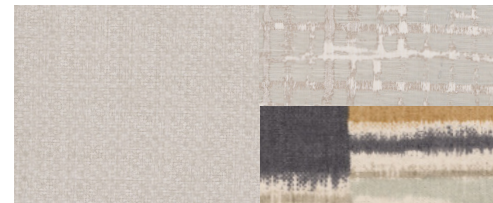
BACKSPLASH



COUNTERTOP



LIVING ROOM



MASTER SUITE

Specifications

CHASSIS

- Cummins® B6.7 Engine
- Allison® 2500 MH 6-speed Automatic Transmission with Lock-up
- Peak HP 340 HP @ 2,600 RPM
- Peak Torque (lb – Ft. Max Net) 700 @ 1,600 RPM
- Straight Rail Chassis Frame
- Adaptive Cruise Control
- Collision Mitigation with Forward Warning and Active Braking
- Electronic Stability Control with Roll Stability Support
- Automatic Traction Control
- Air Ride Suspension
- Full Air Brakes
- Exhaust Brake
- Four Aluminum Wheels
- Tire Pressure Monitoring
- Air Leveling System

	33 AL	38 LL
Freightliner® XCS Straight Rail Rear Engine Diesel Chassis with RoadWatch	S	S
GAWR—Front	10,000 lb	10,410 lb
GAWR—Rear	18,000 lb	17,590 lb
GVWR	28,000 lb	28,000 lb
GCWR	33,000 lb	33,000 lb
Wheel Base	198"	252"
Tire Size	255/80R22.5	255/80R22.5
Fuel Tank (gal.) — Dual Fuel Fill	90	90
DEF Tank ¹ (gal.)	13	13
Alternator Amps	160	160
Hitch Rating ²	5,000 lb	5,000 lb

¹ Diesel Exhaust Fluid (DEF) is the active component used in Selective Catalytic Reduction (SCR) engines to reduce nitrogen oxide emissions by 90% to meet EPA standards.

² Maximum Trailer Weight is dependent on the loading and towing variables which include the GVWR, GAWR, and GCWR, as well as adequate trailer brakes.

WEIGHTS AND MEASURES

	33 AL	38 LL
Overall Length (approximately) ³	35'2"	39'6"
Overall Height (maximum)	12'10"	12'10"
Interior Height	84"	84"
Overall Width ³	101"	101"
Interior Width	96"	96"
Fresh Water (gal.)	70	70
Black Water (gal.)	50	50
Grey Water (gal.)	65	65
LPG Tank (gal.; can only be filled to 80% capacity)	24	24
Basement Storage (cubic ft – app.)	71	118
Minimum Garage Height	14'	14'

³ The approximated coach width and length does not include side-view mirrors and rear ladders.

PLUMBING AND ELECTRICAL

- 8.0 kw Onan® Generator
- Four 6 V House Batteries
- 50 Amp Service
- Two Roof ACs with Heat Pumps (15 K BTUs)
- 2000 Watt Pure Sine Wave Inverter
- Tank Level Monitoring System
- Heated Holding Tank Compartment
- Prep for Satellite
- Prep for Solar Panel
- Spyder® Multiplex System¹ **UPDATED**
- Aquaview ShowerMiser
- Truma® Gas Continuous Water Heater² **UPDATED**

PLUMBING AND ELECTRICAL OPTIONS	33 AL	38 LL
Wi-Fi Booster	O	O
In-motion Satellite	O	O

¹ Spyder Multiplex Controls now with mobile app capability

² Now controlled through the Spyder Multiplex Control Panel

DRIVER'S COMPARTMENT

- Tilt and Telescoping Steering Wheel with Integrated Controls
- One Drawer in Dash
- Power Suspended Adjusted Throttle and Brake Pedals
- Digital Dash Cluster
- CD Player and AM/FM Stereo
- Power Solar and Privacy Windshield Shades
- Fire Extinguisher
- Ceiling Mounted Speakers
- In-dash Navigation System
- Manual Solar and Privacy Shades on Side Windows
- Six-way Power Driver and Passenger Seats
- Color Back-up Monitor

DRIVER'S COMPARTMENT OPTIONS	33 AL	38 LL
Overhead Front Bunk	O	O

EXTERIOR

- Fiberglass Front and Rear Caps
- Front Cap Protective Film
- Tinted One-piece Windshield
- Horizontal Mounted Wipers
- Heated Power Mirrors
- Exterior Patio Light
- Power Patio Awning
- Patio Side Exterior TV
- Awning(s) over Slide-outs
- Double Electric Step
- Full-body Paint
- Convenient Access Doors with Gas Shocks
- Single Handle Lockable
- Storage Door Latches
- Charcoal Carpet Cargo Storage Walls
- Sewer Hose Storage **NEW**
- Product Logo **UPDATED**
- Gen 2 Paint Schemes **NEW**
- Fast Charge USB Ports for Exterior TV Box **NEW**

EXTERIOR OPTIONS	33 AL	38 LL
Lippert™ On-The-Go™ Ladder NEW	O	O

INTERIOR

- Soft Touch Vinyl Ceiling
- Flat-panel TV in Entertainment Center with Soundbar
- Treated Carpet and Fabrics
- Ball Bearing Drawer Slides
- Solar and Privacy Shades
- Power Roof Vents
- Smoke Detector
- Carbon Monoxide Detector
- LED Lighting
- LPG Leak Detector
- BluRay® Player
- Residential Refrigerator
- Manual Step Cover **UPDATED**

INTERIOR OPTIONS	33 AL	38 LL
Central Vacuum Cleaner	O	O
Handcrafted Cabinetry	Natural Alder	S
Fabric Suites ¹	NEW Moondance	O
	NEW Stonewashed	O
Floor Tiles ²	NEW Seagrass (Matte Finish)	S
Ultraleathers ³	NEW Trail	S
	NEW Taupe Hill	O

¹ Khaki Shade and Resort Tan will no longer be available

² Sand Castle will no longer be available

³ Belgian and Cocoon will no longer be available

KITCHEN

- Large Kitchen Sink with Single Lever Faucet
- Solid Surface Galley Countertop
- 3-burner Cooktop
- Convection Microwave
- Residential Refrigerator

KITCHEN OPTIONS	33 AL	38 LL
Oven with Cooktop/Convection Microwave	O	O

DINETTE/LIVING AREA

KITCHEN OPTIONS	33 AL	38 LL
Ultraleather Booth Dinette/Sleeper on Passenger Side UPDATED	S	—
Ultraleather Booth Dinette/Sleeper on Driver Side UPDATED	—	S
Ultraleather Super Sofa on Driver Side	S	S
Dinette with Computer Workstation on Passenger Side	O	—
Fireplace	O	O

BEDROOM

- Flat-panel TV
- Solar/Privacy Shades
- Memory Foam King Mattress (72" x 80")

BEDROOM OPTIONS	33 AL	38 LL
Stacked Washer/Dryer	O	O

BATHROOM

- Medicine Cabinet
- Fiberglass Shower¹ **UPDATED**
- Roof Vent Fan

¹ Removed fiberglass molded seat to allow for more room in shower

Because of progressive improvements and specifications, standard and optional equipment are subject to change without notice or obligation. For a complete and up-to-date list of available options and specifications, visit tiffinmotorhomes.com.

1

YEAR OR 12,000 MILES
LIMITED WARRANTY

5

YEARS OR 50,000 MILES
DELAMINATION
LIMITED WARRANTY

10

YEARS OR 50,000 MILES
CONSTRUCTION
LIMITED WARRANTY

1

YEAR COACH
ROADSIDE SERVICE

∞

ONGOING
CUSTOMER SUPPORT



TIFFIN

MOTORHOMES

FOR PARTS & SERVICE CALL 256.356.0261 OR VISIT TIFFINMOTORHOMES.COM | 105 2ND ST NW RED BAY, AL 35582  

©2021 Tiffin Motorhomes, Inc. Allegro®, Allegro Breeze®, Allegro RED®, Phaeton®, Allegro Bus®, Zephyr®, Wayfarer®, Roughing It Smoothly®, Open Road®, PowerGlide®, Pusher® and Cahaba® are registered trademarks of Tiffin Motorhomes, Inc. All rights reserved.
For all information concerning the limited warranty provided by Tiffin, please refer to the full written limited warranty set forth on the Tiffin website or held by our authorized dealerships. Please note, some interior furnishings not included.