

OUTDOOR LIFESTYLE

INDOOR LUXURY



# BIGHORN



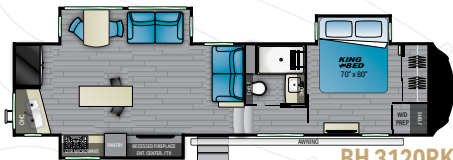
BROUGHT TO YOU BY  
**HEARTLAND**



## TOP 5

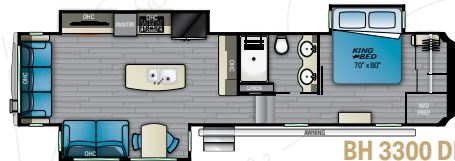
# EXTERIOR FEATURES

- 1 Super Store-More 3-sided accessed basement with 30% more storage
- 2 Azdel laminated sidewalls with lightweight non-wood substrate, sound barrier and better insulation value
- 3 "Comfort Camping" tire pressure monitoring prep kit, Bluetooth speaker bracket, and Euro entry door latch
- 4 MORyde 12V detachable power cord reel mounted in front basement compartment
- 5 MORyde CRE3000 Rubber Suspension



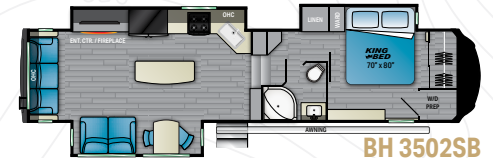
**BH 3120RK**

LENGTH - 37' 6" | HEIGHT - 13' 3" | HITCH - 2,141 LBS.  
 DRY - 11,972 LBS. | GVWR - 16,500 LBS. | SLEEP CAPACITY - 3-4



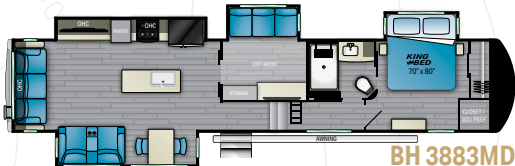
**BH 3300 DL**

LENGTH - 39' 0" | HEIGHT - 13' 3" | HITCH - 2,330 LBS.  
 DRY - 12,277 LBS. | GVWR - 16,000 LBS. | SLEEP CAPACITY - 3-4



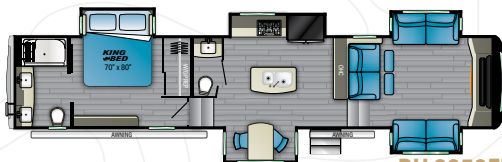
**BH 3502SB**

LENGTH - 39' 3-1/4" | HEIGHT - 13' 3" | HITCH - 2,585 LBS.  
 DRY - 12,840 LBS. | GVWR - 16,500 LBS. | SLEEP CAPACITY - 3-4



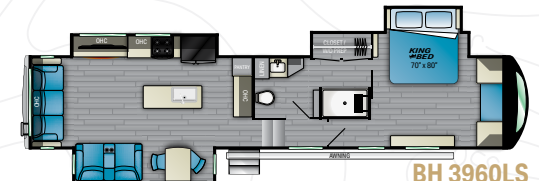
**BH 3883MD**

LENGTH - 43' 1" | HEIGHT - 13' 3" | HITCH - TBD LBS.  
 DRY - TBD LBS. | GVWR - TBD LBS. | SLEEP CAPACITY - 9+



**BH 3950FL**

LENGTH - 43' 10" | HEIGHT - 13' 3" | HITCH - 3,675 LBS.  
 DRY - 14,238 LBS. | GVWR - 16,500 LBS. | SLEEP CAPACITY - 5-6



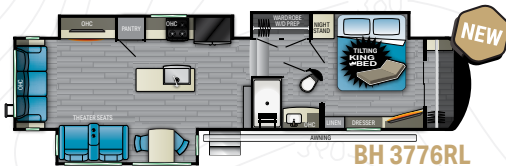
**BH 3960LS**

LENGTH - 43' 10" | HEIGHT - 13' 3" | HITCH - 3,020 LBS.  
 DRY - 15,212 LBS. | GVWR - 16,500 LBS. | SLEEP CAPACITY - 3-4



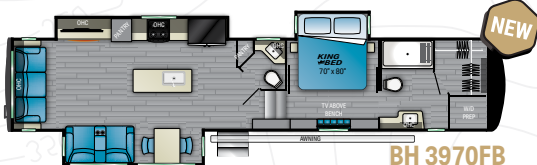
## TOP 5 INTERIOR FEATURES

- 1 | "Triple Top" 3 separate kitchen surface workspaces for superior kitchen flow (most floor plans)
- 2 | "True Wood" 100% maple hardwood cabinetry & fascia in dynamic "Black and Tan" 2-tone wood package
- 3 | "Spa Baths" with solid surface sinks, marble look shower, removable shower head and teak wood seat
- 4 | Straight roof line and 'elite height' main slides for increased space and storage
- 5 | In-house constructed vacuum-bonded laminated main and upper deck floors



**BH 3776RL**

LENGTH - TBD | HEIGHT - TBD | HITCH - TBD  
 DRY - TBD LBS. | GVWR - TBD LBS. | SLEEP CAPACITY - TBD



**BH 3970FB**

LENGTH - 43' 3" | HEIGHT - 13' 3" | HITCH - 2,905 LBS.  
 DRY - 14,595 LBS. | GVWR - 16,500 LBS. | SLEEP CAPACITY - 3-4



## KING OF THE MOUNTAIN PACKAGE:

- Maple hardwood on all cabinetry, stiles and fascia
- 6-point "Level Up" hydraulic leveling system
- Dexter axles
- MORryde CRE3000 rubber suspension
- NevR Adjust brakes
- Slam latch baggage doors
- Bluetooth speaker prep bracket with USB charger in bedroom and outside
- Spare tire mounted on easy access rack
- 12 Gallon DSI gas/electric water heater
- Universal docking station w/ water filter
- Aluminum framed vacuum bonded laminated floors
- Whisper Quiet AC system with dual high-output 15,000BTU ACs
- Aluminum framed pinch rolled laminated fiberglass side & end walls

## BIGHORN PREMIER PACKAGE:

- Stainless steel appliances
- Power theater seating w/ massage, heat and floor lighting
- Super Store More basement storage/access
- 5,100BTU electric fireplace
- In-house crafted solid surface countertops and bathroom sinks
- Slow-close ball bearing drawer and door guides
- Felt wrapped underbed storage with gas strut access
- Fantastic Fan w/ rain sensor in main bath
- 55" LED flat screen TV w/ AM, FM, CD, and DVD stereo
- Slide out topper prep brackets
- Dinette with 2 standard and 2 folding chairs
- Dual surface mounted wireless cell chargers in bed and living room
- Marble-look shower w/ folding teak wood seat (N/A 3502SB)

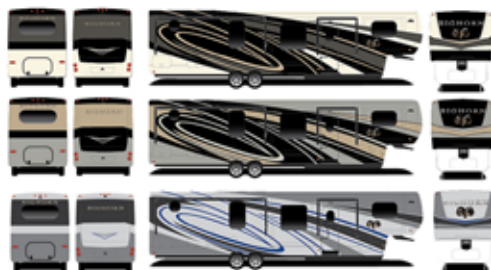
## OPTIONAL EQUIPMENT UPGRADES:

- Air Compressor Kit with Door and Off-door Side Hose Connections
- Power Awning Main Slide Dinette (N/A 3950FL and 3120RK)
- 12V heat padson holding tanks
- 3rd 15K A/C & Power Management System
- Generator Prep (Forced w/ 5.5 Generator)
- 300W Solar System with 2000W Inverter
- Stackable Washer/Dryer (Most Models)
- 18 Cubic Feet Gas/Electric Refer
- Dual Pane Frameless Windows
- Add Heat Pump to Main A/C
- Add Heat Pump to 2nd A/C
- Upgraded Vacuum

- 50 AMP service
- Electric awning w/ LED light strip
- Aluminum rims
- Battery disconnect
- Winegard Traveler satellite wiring prep
- LED entry light
- Frameless windows
- Rear ladder
- Rear and side camera prep
- MORryde "Zero G" entry step
- 300W solar prep
- 32" bedroom TV
- Exterior shower

- Hidden hinges on all cabinets
- King mattress
- Residential linoleum on all main floors
- Residential kitchen and bath faucets
- Hardwood bath steps
- Backlit headboard
- 2" accessory hitch
- Winegard Air 360+ TV antenna & wifi prep
- Rota-Flex rubberized pin box
- 12V Detachable power cord reel
- 20 cu.ft. residential fridge
- Roller shades
- Hide-a-bed sofa (N/A 3120RK)

## FULL BODY PAINT OPTIONS



- Black & Crème
- Silver & Gold
- Blue & Crème

## SPECIAL FEATURES

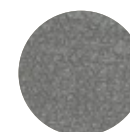


Spa Bath



Store-More Storage

## INTERIOR FABRIC DECOR OPTIONS



Smoky Quartz



Gemstone

## VISIT US ONLINE



For more information and to take a virtual walk-through, visit [www.heartlandrvs.com](http://www.heartlandrvs.com)

Your authorized Heartland dealer: