

WINNEBAGO

INSPIRE 34AE



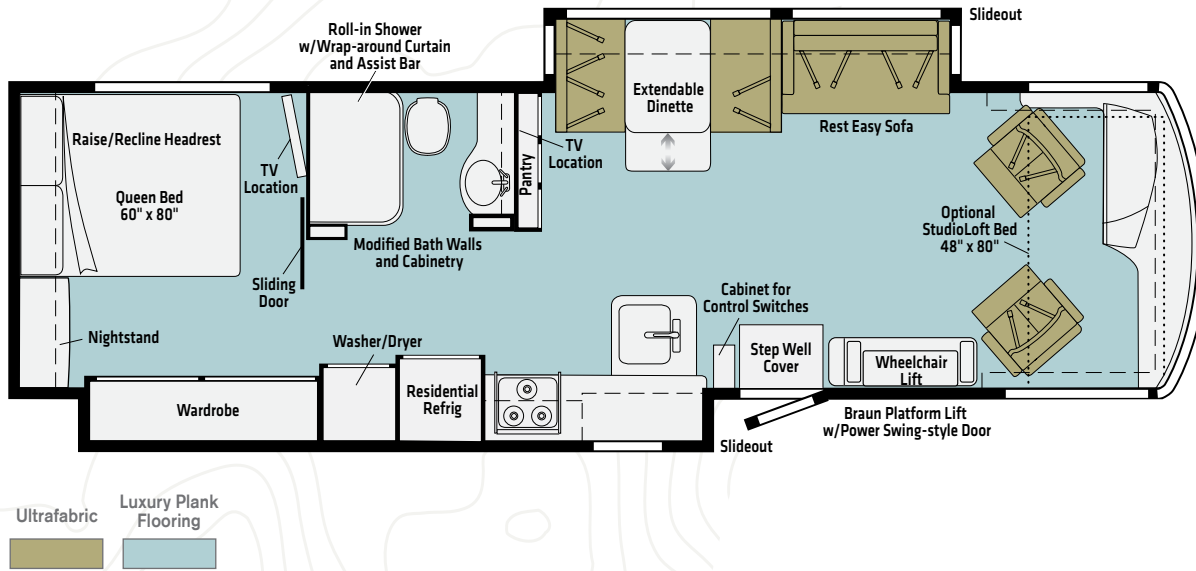
**ACCESSIBILITY
ENHANCED
INSPIRE**

One of the few mid-entry diesel pusher motorhomes on the market, the upscale Inspire® is ideally suited for Winnebago's accessibility enhancements. Designed to take full advantage of the 340-hp Freightliner XCS chassis, the Inspire delivers a smooth, well-mannered ride with more luxury, space and power. And like all Winnebago diesel pushers, the Inspire comes with a 3-year/100,000 mile warranty.

**ACCESSIBILITY
ENHANCED** 
WINNEBAGO

WINNEBAGO INSPIRE 34AE

INSPIRE // 34AE /



An Accessibility Enhanced Inspire allows you to:

- Travel comfortably — and sleep in your own bed each night.
- Visit faraway places without the hassles of flying.
- Bring your pets or service animals along with you.
- Escape from the routine of everyday life and build lasting memories.

The following accessibility enhancements are standard on the 34AE floorplan:

- Platform wheelchair lift with 800-pound lifting capacity
- Power swing-style door
- Wall-mount and key-fob remote controls allow wheelchair user to independently enter and exit the coach
- Expanded hallway and toilet areas for greater accessibility
- Large roll-in shower with assist bar
- Electric adjustable queen bed
- Extendable dinette

Accessible placement of:

- Systems monitor
- Generator and light switches
- Remote-control roof vents
- Adjustable showerhead

Available options include:

- Accessible location of microwave
- Folding bench seat for shower
- Additional assist bars

WEIGHTS | MEASURES

34AE

Length	35'9"
Exterior Height ¹	11'11"
Exterior Width ²	8'5.5"
Exterior Storage ³ (cu. ft.)	153
Awning Length	17'
Interior Height	6'8"
Interior Width	8'0.5"

1. The height of each model is measured to the top of the tallest standard feature and is based on the curb weight of a typically equipped unit. The actual height of your vehicle may vary by several inches depending on chassis or equipment variations. Please contact your dealer for further information.
2. Floorplans feature a wide-body design - over 96" In making your purchase decision, you should be aware that some states restrict access on some or all state roads to 96" in body width. Before making your purchase decision, you should confirm the road usage laws in the states of interest to you.
3. The load capacity of your motorhome is designated by weight, not by volume, so you cannot necessarily use all available space when loading your motorhome. Measurements are based on the most recent information available. See your dealer for specifications.

Not all items available in combination. See dealer for details.

Winnebago's® continuing program of product improvement makes specifications, equipment, model availability, and prices subject to change without notice. Published content reflects the most current product information at the time of printing. Please consult your dealer for individual vehicle features and specifications.



winnebago.com
(800) 492-9135