

EMBLEM

GAS CLASS A MOTOR COACH



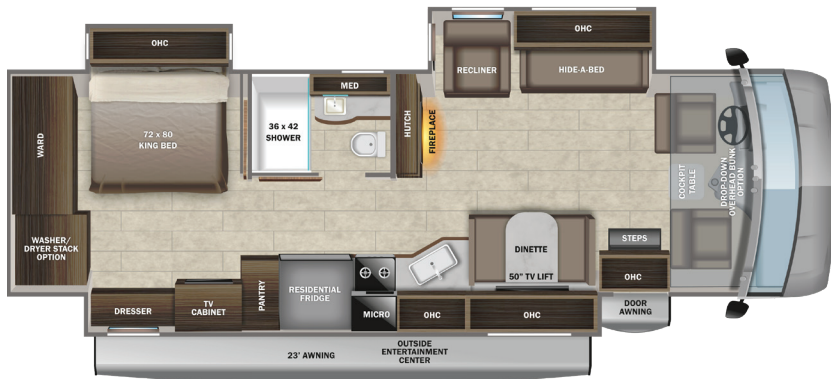
2022



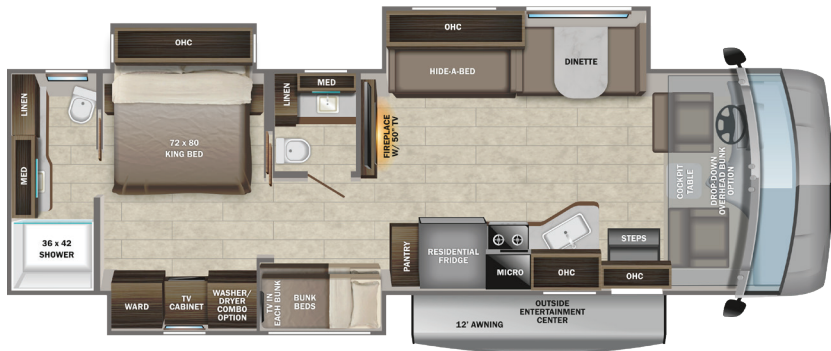
ENTEGRA
COACH®



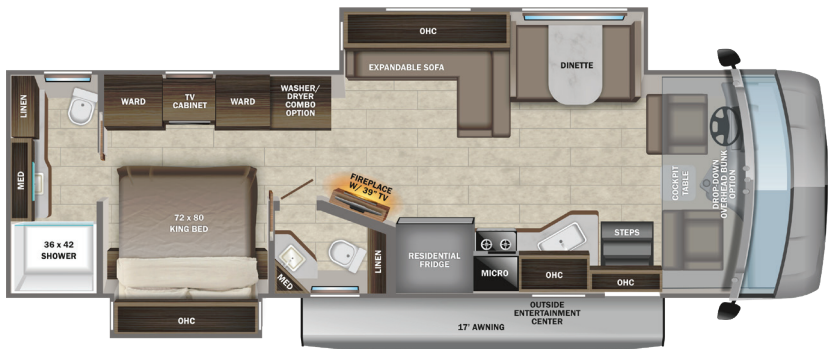
FLOORPLANS



36H OPTIONS A, C AND E

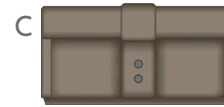
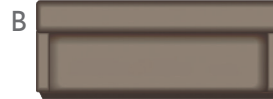
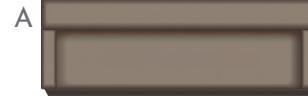


36T OPTIONS C AND E



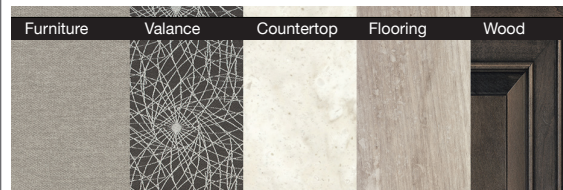
36U OPTIONS B, D AND E

OPTIONS

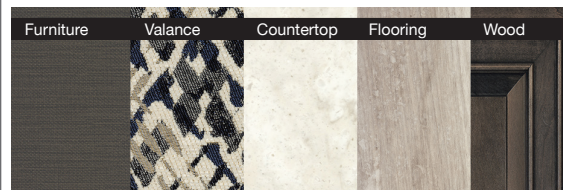


INTERIOR DÉCOR

Crossville



Richmond



EXTERIOR SELECTIONS



CUSTOMER VALUE PACKAGE

E-Z DRIVE™ ELITE: Computer-balanced driveshaft, variable-rate front and rear jounce bumpers, heavy-duty front and rear stabilizer bars, SACHS shocks, 22.5-in. Michelin® tires
Automatic hydraulic leveling jacks
Frameless windows
15,000-BTU A/C unit with heat pump and second 13,500-BTU A/C unit
Exterior entertainment center with outside speakers, LED TV mounted on swivel bracket and single-disc DVD/FM radio
Electric patio awning with LED lights
Slideout cover
Onan® Marquis Gold Genset 5,500-watt generator with auto-gen start
2,000-watt inverter
50-amp electrical service
Girard® tankless water heater
Pioneer® 8-in. infotainment center with Apple CarPlay® and Android Auto™
Backup and side-view cameras
Removable driver/passenger cockpit table
LED-lit, solid-surface kitchen countertops with recessed stainless steel sink and sink covers
LED HD Smart TV in living area
Day/night roller shades in living area

STANDARD CHASSIS EQUIPMENT

Ford® F53 chassis
GVWR - 24,000-lb.
GCWR - 30,000-lb.
7.3L V-8 350 HP engine with 468 ft.-lb. torque
6-speed automatic TorqShift® transmission with overdrive and tow haul mode
210-amp alternator
G-rated highway tires-245/70R19.5
Front and rear disc, 4-wheel anti-lock brakes
5,000-lb. rear hitch receiver with dual connector and 7-pin plug
12V chassis battery
80-gal. fuel tank

HEAT, A/C, POWER & WATER EQUIPMENT

Transfer switch with reverse polarity protection
(2) 6V AGM (220Ah) house batteries on slideout tray
190W solar panel with dual controller
35,000-BTU auto-ignition ducted furnace
Furrion® electric fireplace
24.5-gal. propane tank (83-lb.)
LP quick-connect hookup
Thetford® Sani-Con® Turbo Macerator system

Exterior utility center
Winterization drain system
Black tank flush
Outside shower
12V demand water pump
Water filtration system

STANDARD EXTERIOR EQUIPMENT

TuffShell™ vacuum-bond laminated roof, floor and sidewalls
Bead-foam insulation (R-24 max roof, R-9 max floor, R-8 max walls)
One-piece, seamless, crowned fiberglass roof
One-piece, seamless, fiberglass front and rear caps
Premium Sikkens full-body paint
Entrance door with industry's largest travel-view window
Electric-powered entrance step
Lockable pass-through storage compartments with slam latches
Roof ladder

COCKPIT AMENITIES

Power front privacy shade with manual side privacy shades
120-in. panoramic windshield
6-way power and swivel driver/passenger seats
Soft-touch, vinyl-wrapped automotive dash
A/C and cruise control
Tilt steering wheel
Auxiliary start

STANDARD INTERIOR EQUIPMENT

Firefly Multiplex system
84-in. interior ceiling height with padded vinyl ceiling
High-intensity recessed LED ceiling lights
Tile-like vinyl flooring
LED-lit hardwood fascia
Hardwood cabinet doors and drawers
Deluxe hidden cabinet hinges
Ball-bearing drawer guides
Entegra-exclusive, easy-operation legless dinette table
Prep for satellite dish
Cable TV hookup with RG-6 coax
Winegard 2.0 Wi-Fi/4G antenna
Wood-framed kitchen window with spice cabinets
Residential refrigerator with ice and water in door
2-burner induction cooktop
Residential-size convection microwave oven
One-piece, fiberglass shower with glass door, skylight and light
Recessed, LED-lit, stainless steel bathroom sink

Porcelain toilet with foot flush
Powered roof vent in bathroom with wall switch
Walk-around, king-size bed with bedspread and nightstands
Under-bed storage (select models)
LED TV in bedroom
Large wardrobes
Bunks with industry-exclusive, 300-lb. capacity each (36T)

STANDARD SAFETY EQUIPMENT

2-point lap safety belts in all designated seating locations
Smoke alarm
Carbon monoxide detector
Third brake light
Porch light

OPTIONS

Drop-down overhead bunk in cab area with 750-lb. capacity
Combination washer/dryer (36T, 36U)
Stackable washer/dryer (36H)
Power theater seating (36H, 36T)
12-cu.ft. gas/electric refrigerator
Freestanding table with 4 chairs (36U)
120-in. straight reclining sofa (36H)
93-in. straight reclining sofa (36U)

WARRANTY

2+3
YEAR | YEAR
LIMITED | STRUCTURAL
WARRANTY

NO ONE OFFERS A BETTER WARRANTY

At Entegra Coach, we build our RVs to handle every adventure, then back them with our industry-leading 2+3 limited warranty. Our 2-year limited warranty has you covered for 2 camping seasons. That's 730 days. In addition, our 3-year structural limited warranty has you covered for 3 camping seasons or 1,095 days. You won't find a better limited warranty in the business, because the only strings we attach are those that deliver the ultimate in reliability. For a copy of our 2-year limited + 3-year structural limited warranty with complete terms and conditions, please contact your local Entegra Coach dealer.

It is important for your safety and enjoyment that you are aware of the weights and tow ratings of the RV you select. Consult a competent advisor for questions or advice. Whether you are new to RVing or a veteran, get a feel for the performance of your RV before heading out on the roadways. When you tow a vehicle with your RV, you must drive differently than when you drive a single vehicle. Practice hooking up, driving, backing up and braking in a safe environment or seek out professional instruction. Jayco affixes a weight label to each RV which lists weight information for that vehicle. Refer to that label to verify the vehicle will meet your requirements. Gross Vehicle Weight Rating (GVWR): The maximum permissible weight of the motorhome, including the Unloaded Vehicle Weight (UVW) plus passengers, personal items, all cargo, fluids, options and dealer-installed accessories. The GVWR is equal to or greater than the sum of the UVW and the Cargo Carrying Capacity. Gross Combined Weight Rating (GCWR): The maximum allowable combined weight of the motorhome used as a tow vehicle and the attached towed vehicle.

Floorplan	GVWR (lbs.)	GCWR (lbs.)	Wheel Base	Overall Length	Exterior Height w/ A/C & Satellite	Exterior Width	Interior Height	Fresh Water Capacity (gal.)	Grey Waste Water Capacity (gal.)	Black Waste Water Capacity (gal.)
36H	24,000	30,000	252	38' 8"	12' 10"	101	84	72	40/50	40
36T	24,000	30,000	252	38' 8"	12' 10"	101	84	72	50/41	31/41
36U	24,000	30,000	252	38' 2"	12' 10"	101	84	72	50	31/41