

2021 PARK MODELS

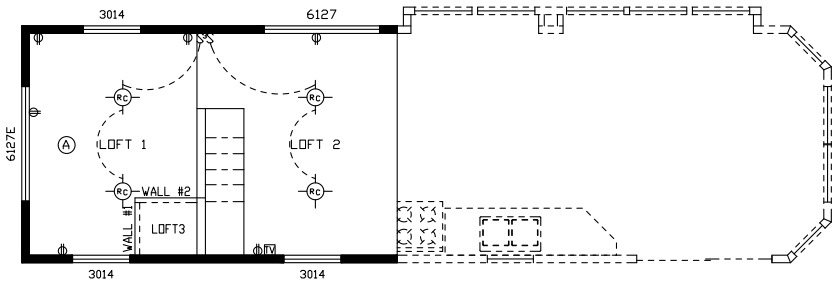
# COUNTRY MANOR



## JUST PARK IT

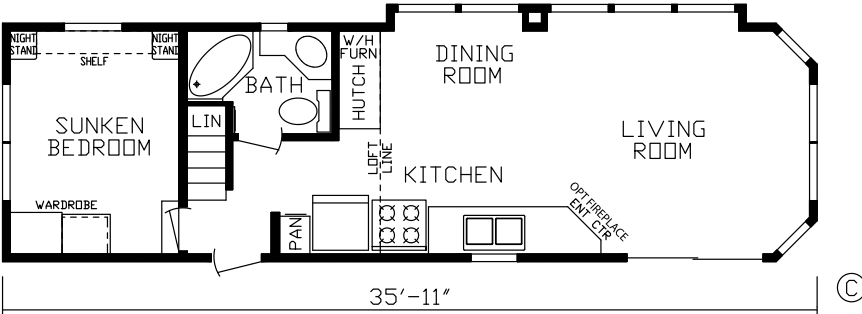
"Build Your Own Unit" at [fairmontparkmodels.com](http://fairmontparkmodels.com)

**Model # 100169 Loft**



**PRO-243  
Optional  
Living  
Room**

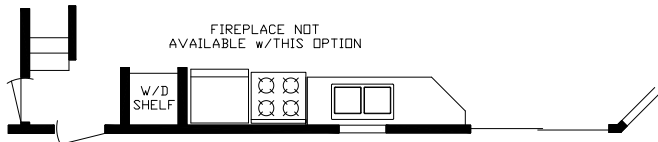
LIVING ROOM



**Cottage Slate Cabinetry**



**Model # 100169 (also available as a flat bedroom floor - Model #100174)**

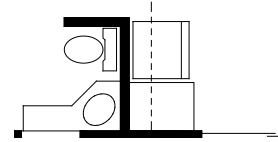
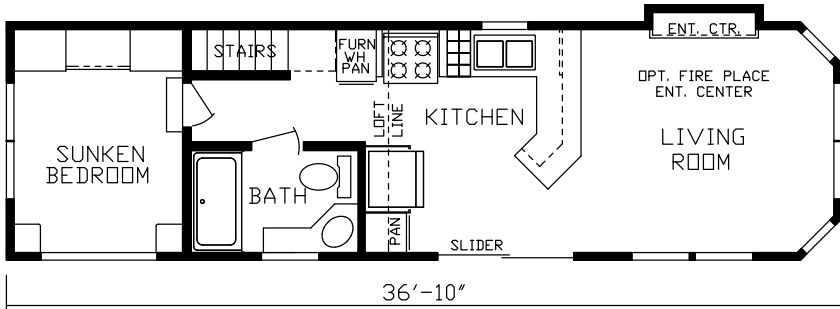
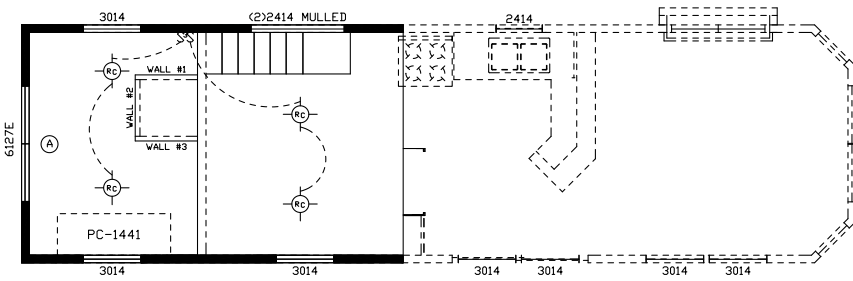


**PRO-256 Optional Stacked Washer /  
Dryer**

100169



**Model # 100152 Loft**



**PRO-224**  
**Optional Stacked**  
**Washer / Dryer**

**Model # 100152 (also available as a flat bedroom floor - Model #100162)**



100152

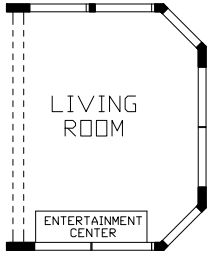
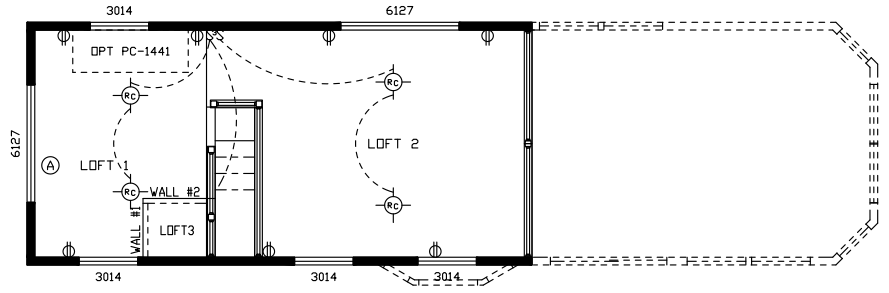


100171

**PRO-162  
Optional  
Entertainment  
Center Location**



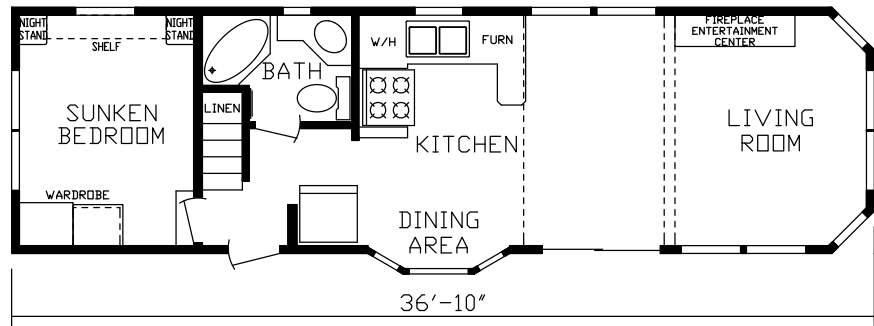
**Model # 100171 Loft**



**PRO-165  
Optional  
Entertainment  
Center Location**

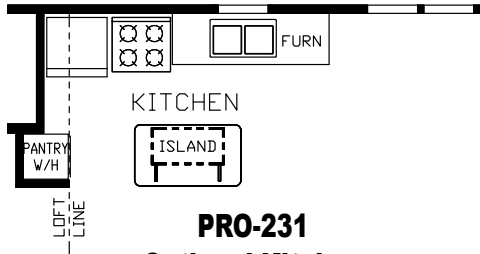
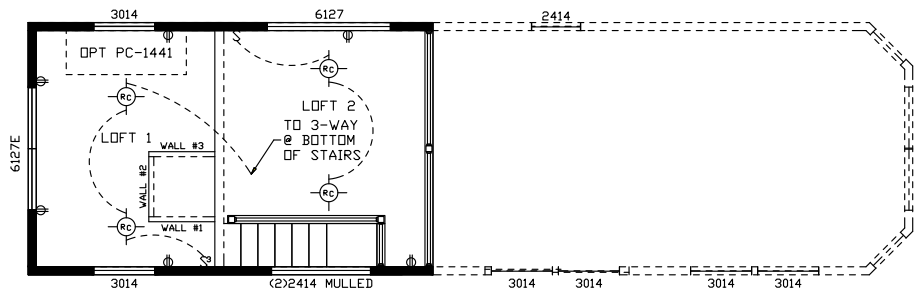


**PRO-243  
Optional  
Entertainment  
Center Location**

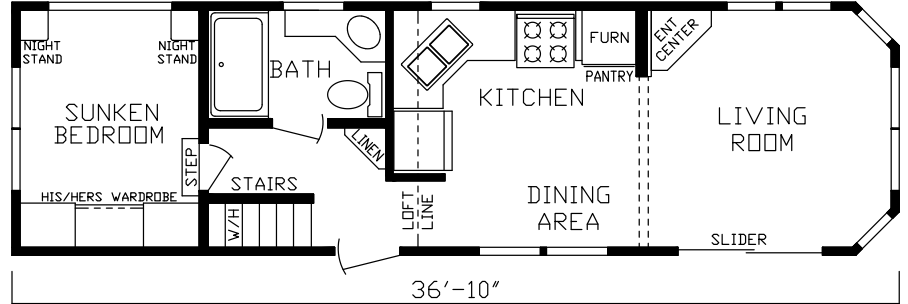


**Model # 100171**

**Model # 100155 Loft**



**PRO-231  
Optional Kitchen**

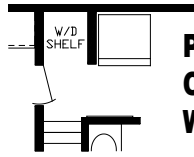


**Model # 100155**

**BUILT BY THE HOUSING EXPERTS**

**NEW!**

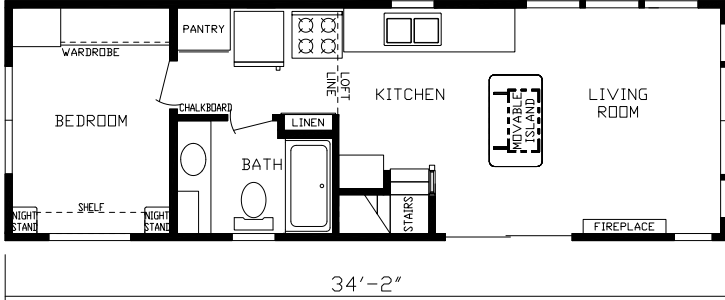
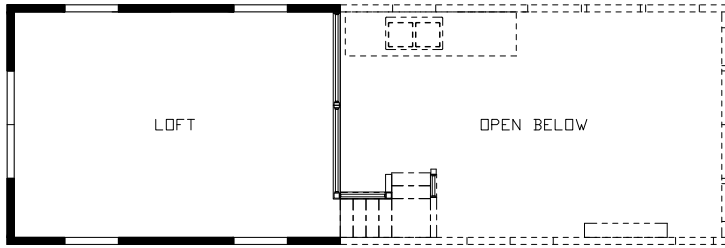
**Model # 100177 LOFT**



**PRO-251  
Optional Stacked  
Washer Dryer**

# COUNTRY MANOR

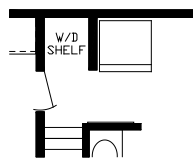
FAIRMONT Park Model RVs



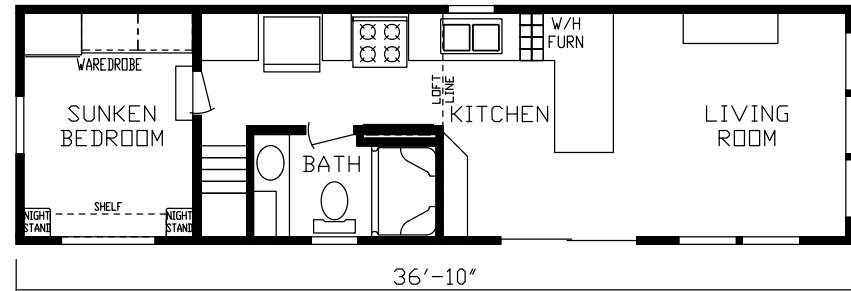
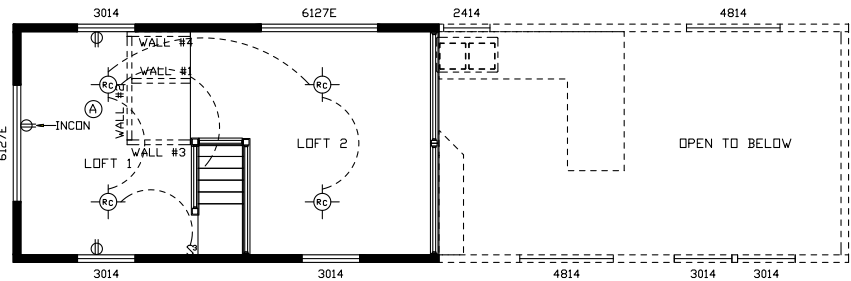
100177

**Model # 100177**

**Model # 100166 Loft**



**PRO-251  
Optional Stacked  
Washer Dryer**



**Model # 100166**

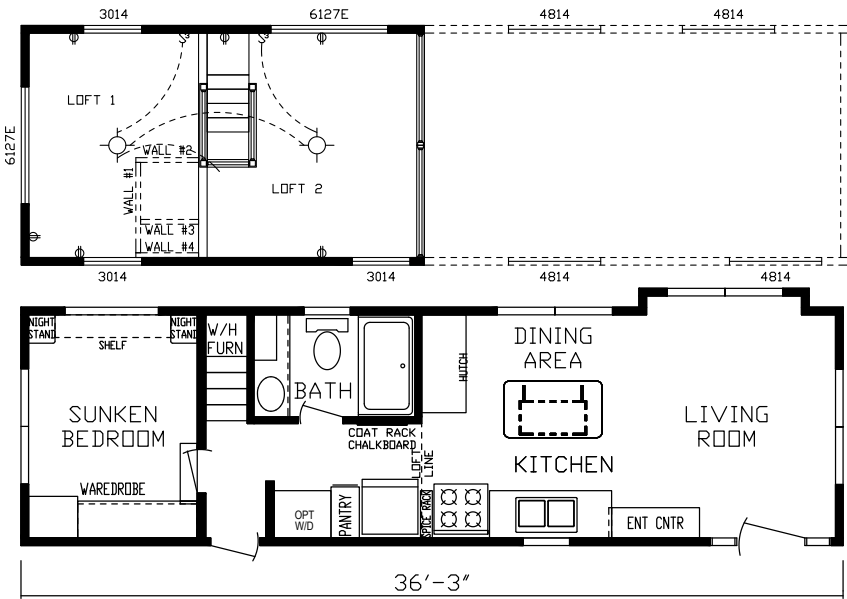


100166

1. Vinyl Thermopane Windows w/Low E Glass — Tilt-to-Clean Single Hung Gridded
  2. Trapezoid Windows w/Low E Glass per Plan
  3. Royal Dutch Vinyl Lap Siding
  4. 7/16" OSB Sheathing Throughout
  5. R-13 Kraft Backed Fiberglass Insulation — Sidewalls
  6. 2 x 4 Sidewall Studs, 16" O.C. — Headers over All Windows & Doors
  7. Exterior Weather Wrap Throughout
  8. 8" I-Beam Frame w/Detachable Hitch
  9. Breathable Mesh Underbelly
  10. 2 x 6 Floor Joists, 16" O.C. — Transverse Framing for Sturdier Floors
  11. R-22 Fiberglass Insulation in Floor
  12. 5/8" OSB Tongue & Groove Floor Decking
  13. Congoleum® Lux Flooring in Kitchen, Bath, Dining Room, Living Room, Hall & Flat Bedroom Floor
  14. 30# Truss Roof Rafters, 16" O.C.
  15. R-19 Insulation in Roof
  16. Innovent® Vent Chutes Above Insulation
  17. 7/16" Roof Decking
  18. Ice and Water Shield — Full Roof Coverage
  19. Owens Corning® Oakridge Pro Lifetime Shingles, Eaves, Soffit & Ridge Ventilated
  20. Residential Rear Entry Door w/Storm Door — 10 Lite Door per Plan
  21. Hardwood Residential Cabinets w/Hardwood Stiles, Flat Panel Cabinet Doors & Hidden Hinges
  22. Dual Bowl Stainless Steel Sink w/Pull Out Chrome Faucet
- Additional Features (not Shown)**
- 1/2" Drywall Walls (Vinyl Covered)
  - 1/2" Residential Textured Drywall Ceilings
  - 2" Mini Blinds
  - LED Can Lights — Ceiling
  - Shaw Carpet® w/Tack Strip in Sunken Bedroom, Loft & Stairway



**Model # 100165 Loft**



**Model # 100165 (also available as a flat bedroom floor - Model #100168)**

# COUNTRY MANOR

FAIRMONT Park Model RVs

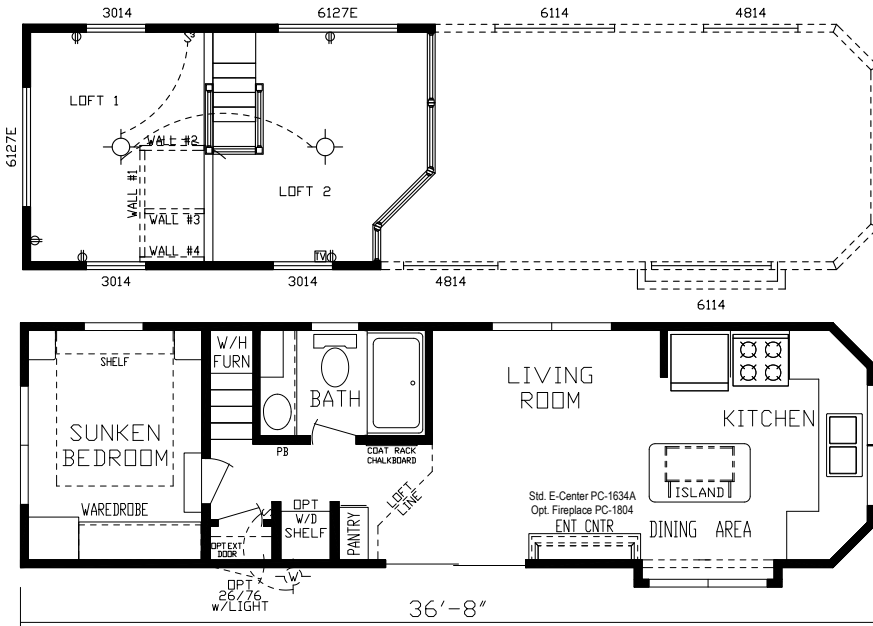


100165



Shown Above  
(left and right)  
with Optional  
PC-1384 Island

**Model # 100170 Loft**



**Choose from Our  
NEW Bedding —  
Standard in  
Country Manor Park  
Models**



**Sandstone**



**Pacific**



**Pewter**

**Model # 100170 (also available as a flat bedroom floor - Model #100176)**



Shown with Optional PC-1804 Entertainment Center and Optional Free Standing Island (below)

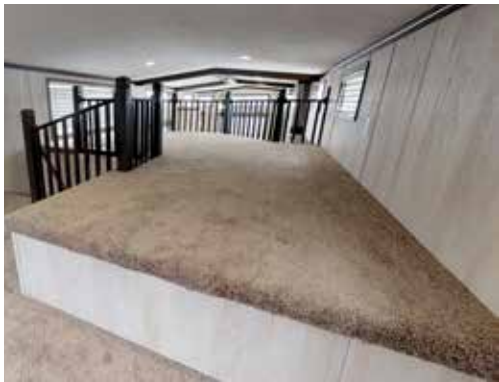


100170



# COUNTRY MANOR

FAIRMONT  
Park Model RVs

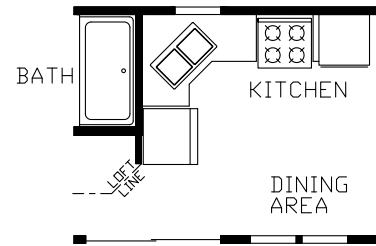
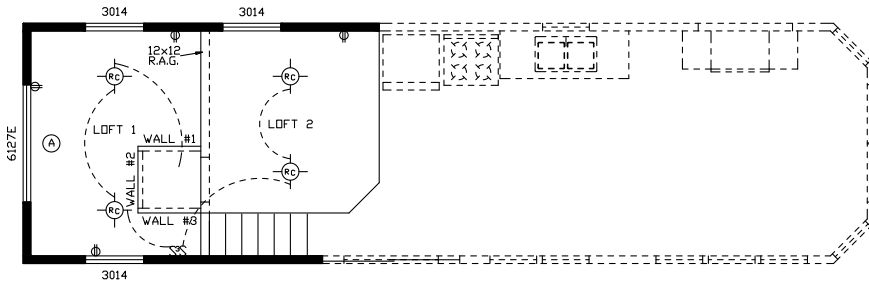


Shown with Optional  
PC-1804 Entertainment Center  
(left and below)

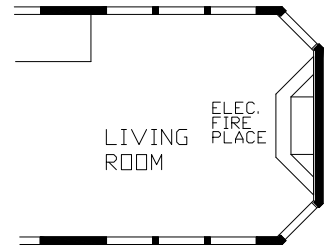
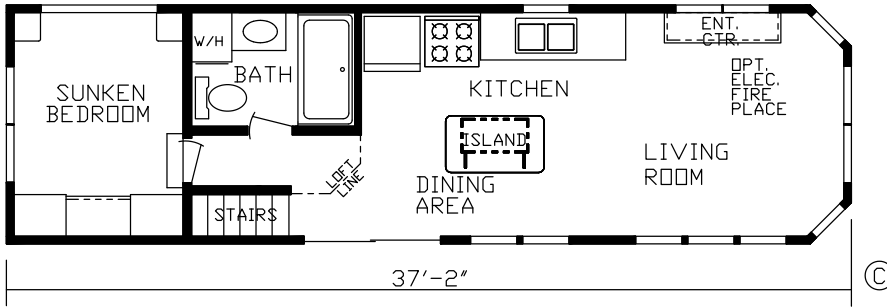


100170

**Model # 100131 Loft**



**PRO-233**  
**Optional Kitchen**



**PRO-066**  
**Optional Living Room**

**Model # 100131**



**PRO-153**  
**Optional Kitchen**

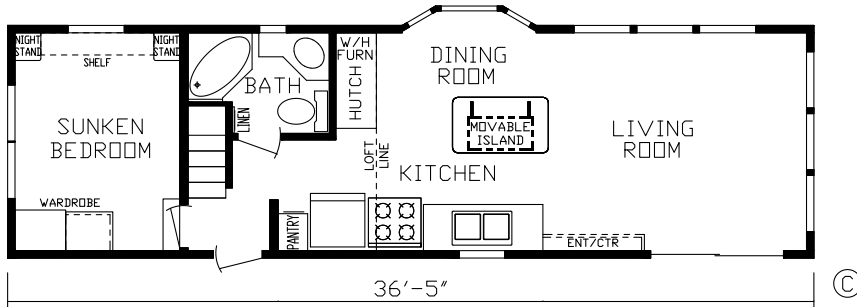
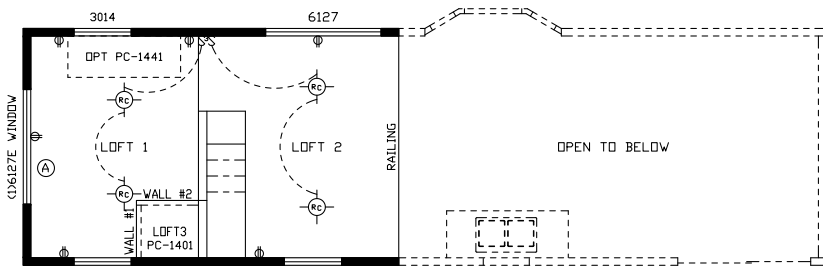
100131



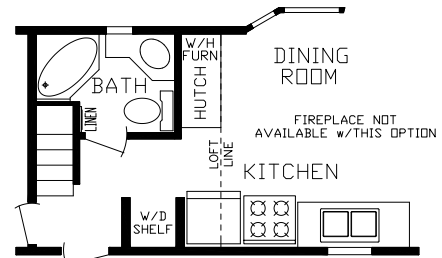
Shown with Optional Free Standing Island  
(above and left)

GET MORE FOR

**Model # 100173 Loft**



**Model # 100173 (also available as a flat bedroom floor - Model #100172)**



**PRO-255  
Optional Stacked  
Washer / Dryer**

**Choose from Our Hardwood Shaker Cabinetry  
Standard in ALL Fairmont Park Models**



**Rustic Shore Maple**



**Cottage Slate**



**Vintage**



**Stone Henge**

**Trim Choices**

**Ibis Trim**



**Java Trim**



**White Trim**



WHAT YOU PAY

## GENERAL

- 8" Steel I-Beam Construction
- 30 PSF Rafters, 16" O.C.
- 2/12 Roof Pitch — 6/12 Dormer Roof Pitch per Print
- 7/16" Roof Decking
- 2" x 4" Sidewalls, 16" O.C.
- 7/16" OSB Plating Under Siding
- ½" Drywall Décor Vinyl Covered Walls
- 2" x 6" Transverse Floor Joist 16" O.C.
- 5/8" OSB Tongue & Groove/Glued & Screwed 4' x 8' Floor Decking
- Steel Strapping from Truss & Floor to Sidewall

## FLOORING

- Shaw® Carpet in Sunken Bedroom, Loft & Stairway
- 5 lb. Rebond Pad
- Congoleum® Roll Goods Bath, Kitchen, Flat Floor Bedroom & Living Room

## HEATING

- 40,000 BTU Gas Furnace
- 5" x 12" Residential Aluminum Heat Ducts
- 4" x 10" Floor Registers

## ELECTRICAL

- Porch Light at Exterior Doors
- GFI Breakers Per Code
- 50 Amp Service w/25' Supply Cord
- Safe House Pkg. – Smoke Detector, LP Detector, Fire Extinguisher, & GFI Receptacles
- (1) Exterior GFI Receptacle - Doorside Waterproof
- Underbelly Receptacle Near Fresh Water Inlet for Heat Tape or Heated Hose
- Recessed Overhead LED Lights Throughout
- 3 TV Jacks – Master BR, LR & Loft
- USB Port & Recept at Bedroom Nightstands

## DOORS

- Raised 6-Panel White Interior Passage Doors
- 10 Lite Rear Door w/Deadbolt & Storm – Per Plan
- Vinyl Thermopane Patio Door per Plan

## PLUMBING

- Double Bowl Stainless Steel Kitchen Sink
- High Arch Kitchen Faucet w/Pull Out Sprayer
- 16 Gallon Gas/Electric/DSI Quick Recovery Water Heater
- Residential Ceramic Commode

## BATHROOM

- Exhaust Fan
- Porcelain Lav Bowl
- Lighted Medicine Cabinet
- 1 Piece Tub/Shower per Plan
- Window per Plans

## INSULATION

- R-19 Fiberglass Sprayed-In Insulation in Roof
- R-13 Fiberglass Kraft Backed Insulation in Sidewalls
- R-22 Fiberglass Insulation in Floor
- HomeGuard™ Exterior Weather House Wrap Wind Barrier

## CABINETRY

- 4 Cabinet Color Choices
- Hardwood Shaker Cabinets & Stiles — In Screwed
- European Style Hidden Cabinet Hinges
- Side Mounted Metal Drawer Guides w/Dovetail Wood Construction
- High Pressure Dual Laminated Countertops & Backsplash
- Tip Out Trays at Kitchen Sink
- Adjustable Overhead Shelving
- Bedside Nightstands w/Receptacle, USB Port & Overhead Cabinets and Shelf

## DÉCOR

- Wingate Wood Cornice Boards to Match Cabinets
- 2" Blinds, Selected Windows
- Vertical Blind for Patio Door
- Residential Crown Molding & Door Trim
- 1/2" Residential Textured Drywall Cathedral Ceilings (Better Insulated & More Sound Proof)
- Bedspread, Pillows, & Shams — 3 Decor Color Tone Choices (Blue, Brown & Grey)

## APPLIANCES

- Black Whirlpool® Appliances
- Whirlpool® Frost Free Refrigerator
- Whirlpool® 30" Gas Range
- Microwave Above Range

## EXTERIOR

- Detachable Hitch
- Royal Dutch Lap Vinyl Siding
- Owens Corning® Architectural Shingled Roof w/ Lifetime Warranty
- Ice & Water-Weather Lock Under Shingles — Full Roof Coverage
- Ventilated Soffit
- Ridge Vent
- Residential Step Flashing at Dormer Transition
- Innovent® Vent Chutes in Roof
- Woven Shepweave Underbelly

## WINDOWS

- Kinro® Egress Windows in All Bedrooms
- Kinro® Thermopane Vinyl Dual Glaze Low E White Single Hung Gridded Windows
- Transom Windows LR, Loft & Bedroom per Plan

## FURNITURE

- Queen Slide-a-Bed Sleeper Sofa & Recliner
- Dinette Table w/4 Chairs or Bar Stools Per Plan
- Queen Bed w/Metal Bed Frame & Pillow Top Mattress

## POPULAR OPTIONS

- Pro Pac Air Conditioning - 13.5K BTU
- Wall Mount Loft Air Conditioner
- Metal Roof
- Metal Underbelly
- White Vinyl Exterior Corner Posts
- 100 amp Service (Direct Wire - No Power Cord)
- 26" or 48" Fireplace - with or without Stone
- 20 Gallon Electric Water Heater
- Black Water Holding Tank w/Marine Toilet per Plan (N/A on models 100165, 100166, 100170 & 100177)
- Gray Water Holding Tank per Plan (N/A on models 100165, 100166, 100170 & 100177)
- Glass Tub/Shower Door
- Shower IPO Tub/Shower
- Black Hardware
- Black Faucets
- Stainless Steel Appliances
- Ceramic Backsplash - Kitchen & Bath
- Stainless Steel Farmers Sink (available only on models 100152, 100165, 100166, 100168, 100170, 100176 & 100177)
- Solid Surface Countertops
- Movable Island & (4) Chairs or Stools
- Lift Frame Bed w/Storage Box
- Sectional w/Sleeper Sofa
- 15-Lite Door w/Dual Sidelites IPO Patio Door
- Loft Entertainment Center
- Coffee Table w/Lift Up Storage
- End Tables
- Washer/Dryer per Plan
- Lighted Ceiling Fan
- Ceiling Beams (N/A on models 100155, 100165, 100166 & 100171)



**JUST PARK IT**  
fairmontparkmodels.com



# WHAT'S IN YOUR PARK MODEL?