


2021 PARK MODELS

# CAVCO



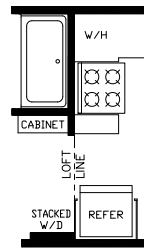
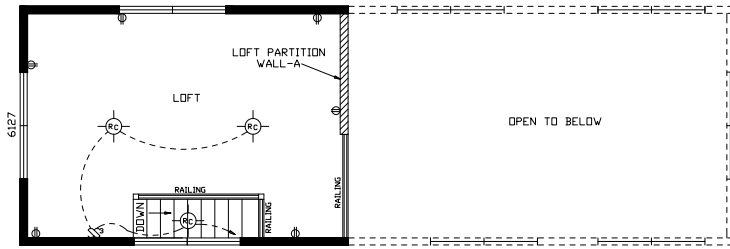
# 150



## JUST PARK IT

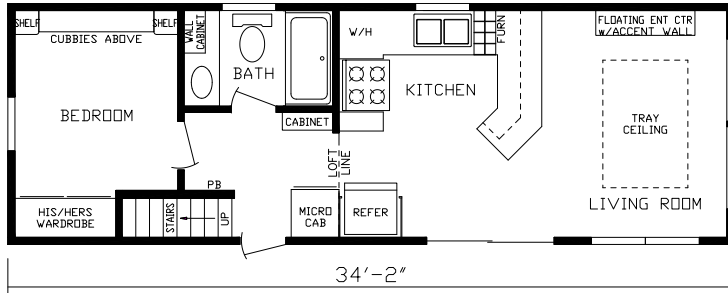
“Build Your Own Unit” at [fairmontparkmodels.com](http://fairmontparkmodels.com)

**Model # 190000 Loft**



**PRO-238  
Optional  
Stacked  
Washer/  
Dryer**

**STANDARD FRONT END  
ON 190000, 190005,  
190006**



©



**OPTIONAL  
FRONT END  
ON 190000, 190002,  
190005, 190006**

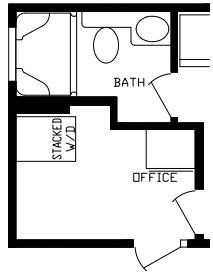
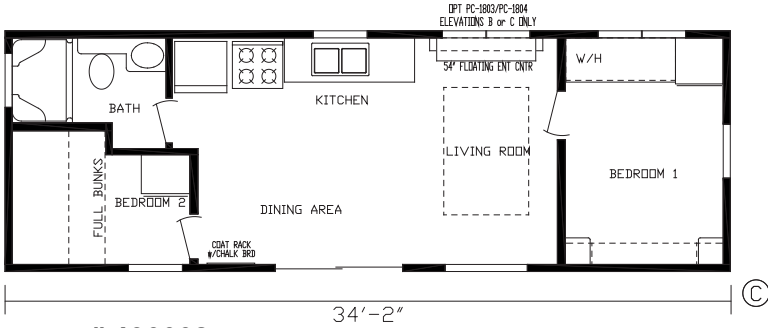
**Model # 190000 (non-lofted version of this model is 190005)**



190000







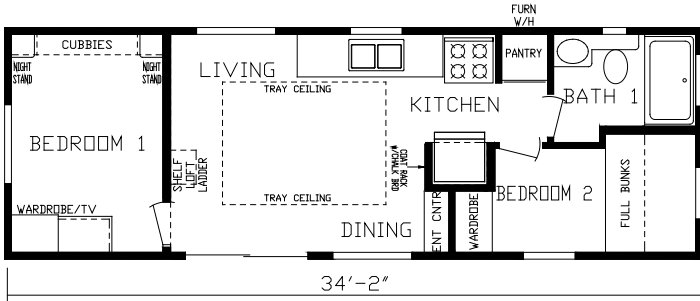
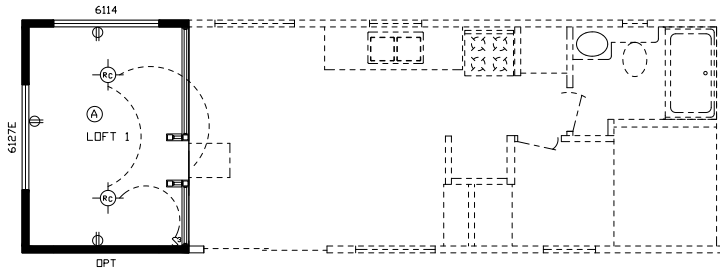
**PRO-242**  
Optional Stacked  
Washer / Dryer

**PEW-222**  
STANDARD  
FRONT END  
FOR 190002



**190002**

**Model # 190004 Loft**



**Model # 190004**



**Sandstone**



**Pacific**



**Pewter**

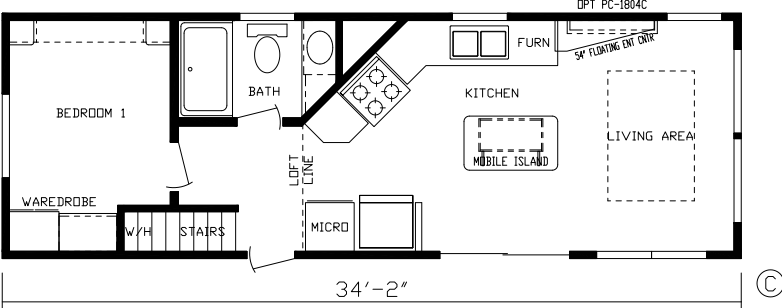
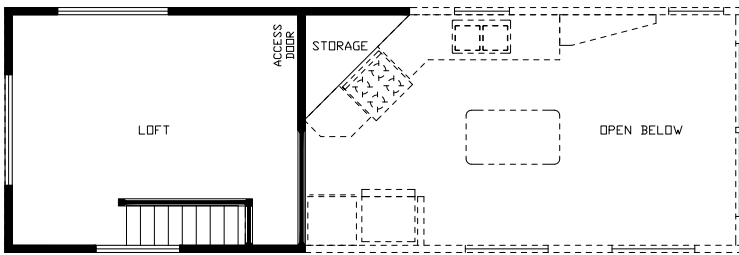
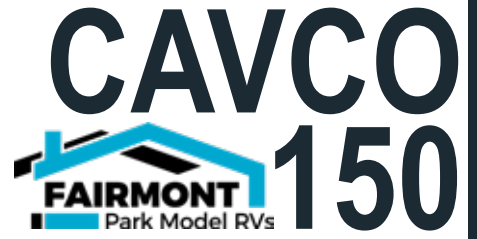
**Choose from Our NEW  
Valance Fabrics —  
Standard in  
Cavco 150 Park Models**



190004



**Model # 190006 Loft**



**Model # 190006**

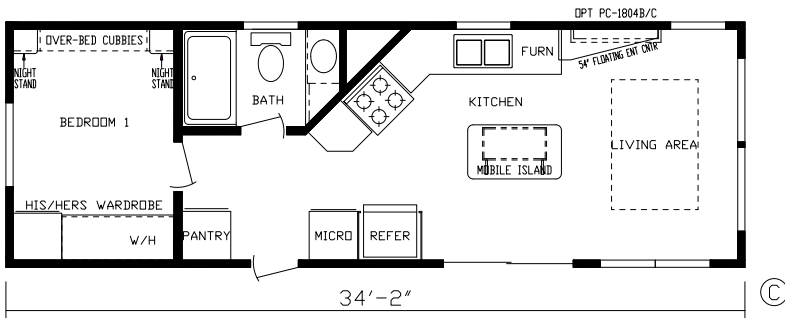


**STANDARD FRONT END FOR 190006**



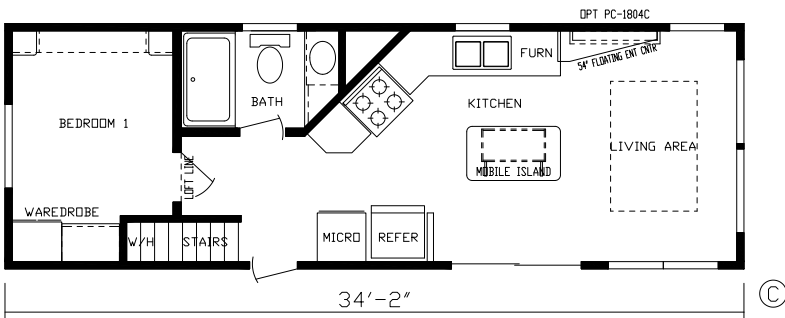
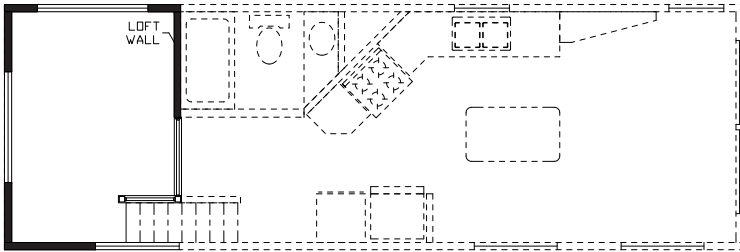
190006

# Choose from Our Hardwood Shaker Cabinetry Standard in ALL Fairmont Park Models



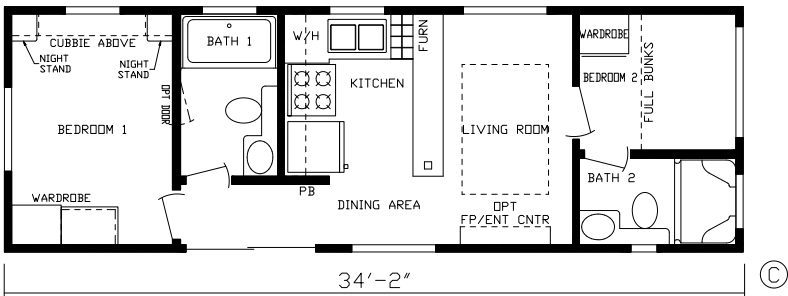
**Model # 190008** (non-lofted version of 190006)

**Model # 190009 Loft**



**Model # 190009** (single loft version of 190006)

**NEW!**



**Model # 190012**



**Rustic Shore Maple**



**Cottage Slate**



**Vintage**



**Stone Henge**

## Trim Choices

**Ibis Trim**



**Java Trim**

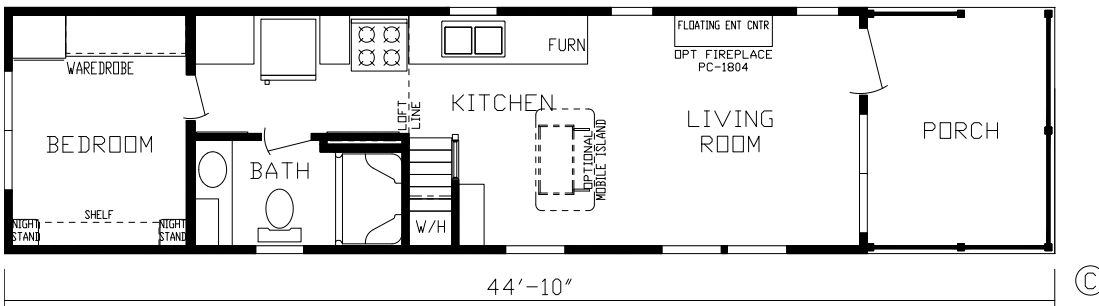
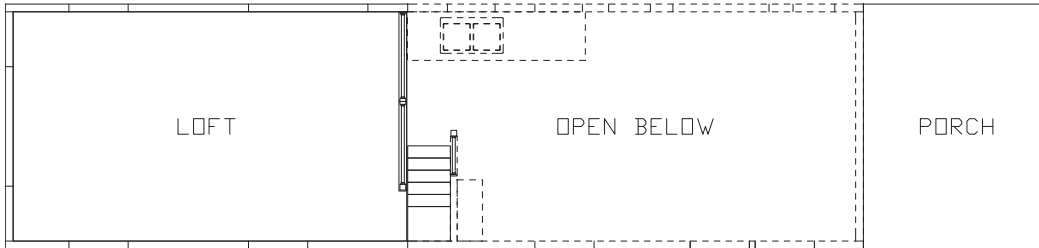


**White Trim**



**NEW!**

## Model # 190011 Loft



## Model # 190011



# 190011





## GENERAL

- 8" Steel I-Beam Construction
- 30 PSF Rafters, 16" O.C.
- 7/16" Roof Decking
- 2" x 4" Sidelwalls, 16" O.C.
- 7/16" OSB Plating Under Siding
- ½" Residential Tape & Textured Drywall Flat Ceiling
- ½" Drywall Décor Vinyl Covered Walls
- 2" x 6" Transverse Floor Joist 16" O.C.
- 5/8" OSB Tongue & Groove/Glued & Screwed 4' x 8' Floor Decking
- Steel Strapping from Truss & Floor to Sidelwall
- Pet Center per Plan
- Bunk Mattresses per Plan

## FLOORING

- Shaw® Carpet in Loft & at Stairway per Plan
- 5 lb. Rebond Pad
- Congoleum® Roll Goods Bath, Kitchen, Flat Floor Bedroom & Living Room

## HEATING

- 40,000 BTU Gas Furnace
- 5" x 12" Residential Aluminum Heat Ducts
- 4" x 10" Floor Registers

## ELECTRICAL

- Porch Light at Exterior Doors
- GFI Breakers Per Code
- 50 Amp Service w/25' Supply Cord
- Safe House Pkg. – Smoke Detector, LP Detector, Fire Extinguisher, & GFI Receptacles
- (1) Exterior GFI Receptacle - Doorside Waterproof
- Underbelly Receptacle Near Fresh Water Inlet for Heat Tape or Heated Hose
- Recessed Overhead LED Lights Throughout
- TV Jack at LR Entertainment Center
- USB Port & Recept at Bedroom Nightstands
- Lighted Ceiling Fan Living Room & Master Bedroom – Non Loft Models
- Lighted Ceiling Fan Living Room – Loft Models

## DOORS

- Raised 6-Panel White Interior Passage Doors
- 10 Lite Rear Door w/Deadbolt & Storm – Per Plan
- Vinyl Thermopane Patio Door per Plan

## PLUMBING

- Double Bowl Stainless Steel Kitchen Sink
- High Arch Kitchen Faucet w/Pull Out Sprayer
- 20 Gallon Electric Water Heater w/Exterior Access Door
- Residential Ceramic Commode

## BATHROOM

- Exhaust Fan
- Porcelain Lav Bowl
- Mirror
- 1 Piece Tub/Shower per Plan
- Window per Plans



## INSULATION

- R-19 Fiberglass Sprayed-In Insulation in Roof
- R-13 Fiberglass Kraft Backed Insulation in Sidelwalls
- R-22 Fiberglass Insulation in Floor
- HomeGuard™ Exterior Weather House Wrap Wind Barrier

## CABINETRY

- 4 Cabinet Color Choices
- Hardwood Shaker Cabinets & Stiles
  - In Screwed
- 40" Overhead Cabinets – Hardwood
- European Style Hidden Cabinet Hinges
- Side Mounted Metal Drawer Guides w/Dovetail Wood Construction
- High Pressure Dual Laminated Countertops & Backsplash
- Tip Out Trays at Kitchen Sink
- Adjustable Overhead Shelving
- Bedside Nightstands w/Receptacle, USB Port & Overhead Cabinets
- Floating Entertainment Center LR– Per Plan w/ TV Jack

## DÉCOR

- Fabric Window Valances in (3) Decor Choices (Blue, Brown & Grey)
- 2" Blinds, Selected Windows
- Residential Crown Molding & Door Trim
- 1/2" Residential Textured Drywall Cathedral Ceilings (Better Insulated & More Sound Proof)
- Coat Rack w/Board Accent Wall
- Convenient Chalk Board over Coat Rack
- Residential Crown Molding & Door Trim
- Ceiling Tray w/Accent VOG
- Cathedral Ceiling w/No Ceiling Tray on Model 190007 (not available on other models)

## APPLIANCES

- Black Whirlpool® Appliances
- Whirlpool® Frost Free Refrigerator
- Whirlpool® 30" Gas Range
- Curved 30" Euro Style Range Hood
- Microwave per Plan

## EXTERIOR

- Detachable Hitch
- Royal Dutch Lap Vinyl Siding
- Exterior Wainscot (3/4 Color & 1/4 Different Color)
- Owens Corning® 25-Year Roof Shingles
- Ice & Water-Weather Lock Under Shingles — Full Roof Coverage
- Ventilated Soffit
- Ridge Vent
- Residential Step Flashing at Dormer Transition
- Innovent® Vent Chutes in Roof
- Woven Shepweave Underbelly
- Lineals – Doorside & Hitch End (White)

## WINDOWS

- Kinro® Egress Windows in All Bedrooms
- Kinro® Thermopane Vinyl Dual Glaze Low E White Single Hung Gridded Windows
- Transom Windows LR, Loft & Bedroom per Plan

## POPULAR OPTIONS

- 1-Color Exterior Siding – No Wainscot
- White Vinyl Exterior Corner Posts
- Awning Rail (Omit Lineals)
- Pro Pac Air Conditioning - 13.5K BTU
- Wall Mount Loft Air Conditioner
- Metal Roof
- Metal Underbelly
- 100 amp Service (Direct Wire - No Power Cord)
- 26" or 48" Fireplace - with or without Stone
- Vertical Blind for Patio Door
- 16 Gallon Gas/Electric/DSI Water Heater
- Glass Tub/Shower Door
- Shower IPO Tub/Shower
- Lighted Medicine Cabinet over Bath Lav
- Black Hardware
- Black Faucets
- Stainless Steel Appliances
- Ceramic Backsplash - Kitchen & Bath
- Stainless Steel Farmers Sink per Plan
- Solid Surface Countertops
- Queen Slide-a-Bed Sofa
- Recliner
- Movable Island & (4) Chairs or Stools
- Dinette Table w/(4) Chairs
- Queen Bed (Metal Frame, Box Spring & Queen Mattress)
- Lift Frame Bed w/Storage Box
- Pillow Top Mattress
- Sectional w/Sleeper Sofa
- Bedspread, Pillows, & Shams in (3) Color Choices to Match Decor
- Bunk Spreads (Match Decor)
- Coffee Table w/Lift Up Storage
- End Tables
- Washer/Dryer per Plan

**JUST PARK IT**  
fairmontparkmodels.com



# WHAT'S IN YOUR PARK MODEL?

All descriptive representations are believed to be accurate at the time of publication. However, due to product improvement and changes in suppliers, design and production may vary. Note: Fairmont Homes reserves the right to make changes in price, colors, materials, components, and specifications and to discontinue models at any time without notice or obligation. Fairmont Homes assumes no responsibility for any error in type, print reproduction, specifications, or floor plans in this or any print material.

©01/2021 Fairmont Homes, LLC, ALL RIGHTS RESERVED