

BIGHORN



OUTDOOR LIFESTYLE

INDOOR LUXURY



BROUGHT TO YOU BY
HEARTLAND

TOP 5 EXTERIOR FEATURES

1. Super Store-More 3-sided accessed basement with 30% more storage
2. Azdel laminated sidewalls with lightweight non-wood substrate, sound barrier and better insulation value
3. MORryde CRE3000 rubber suspension system
4. MORryde 12V detachable power cord reel mounted in front basement compartment
5. Oversized Motorhome-based Euro style entry door latch with oversized entry door grab handle



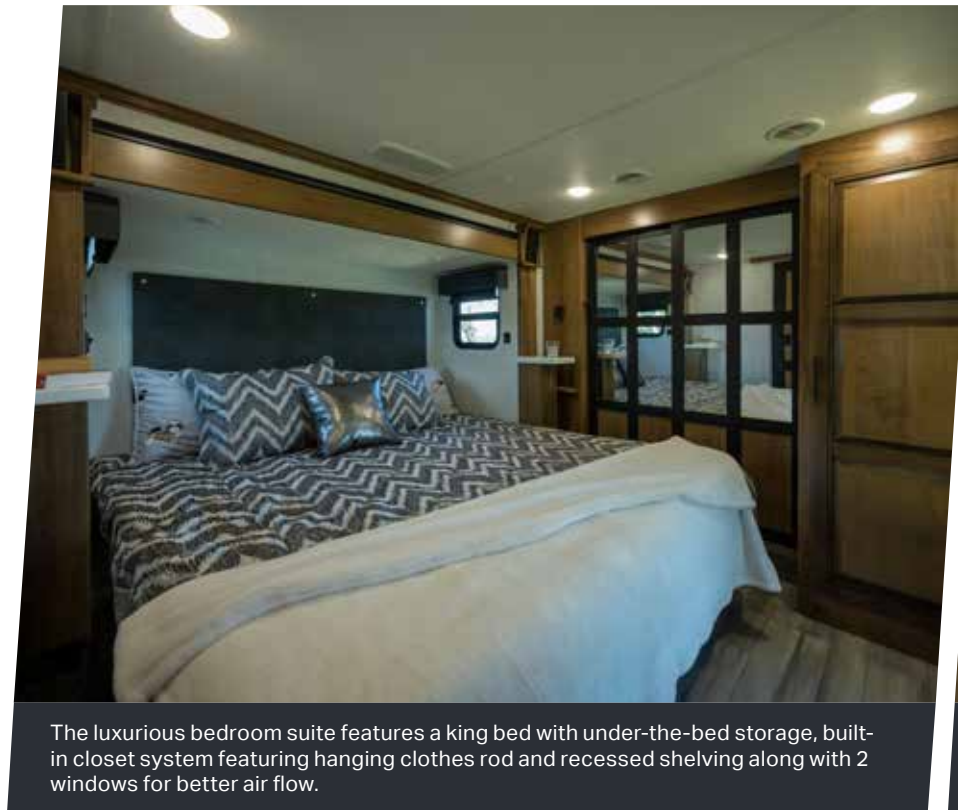
The Azdel composite and aluminum components of our sidewalls create a strong, lightweight, quiet, weather and temperature resistant wall that will increase the life of your RV.



Patent pending super Stor-Mor 3-sided access to basement with 30% more storage capacity.

TOP 5 INTERIOR OPTIONS

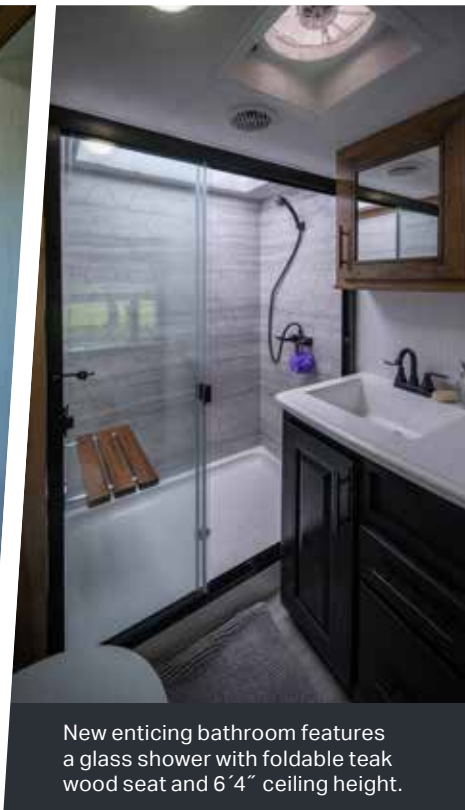
1. "Triple Top" 3 separate kitchen surface workspaces for superior kitchen flow (most floor plans)
2. 100% maple hardwood cabinetry & fascia in dynamic "Black and Tan" 2-tone wood package
3. "Spa Baths" with solid surface sinks, marble look shower, removable shower head and teak wood seat
4. Cushioned woven flooring on slide out floors; anti-microbial, soft on the feet and pet friendly
5. In-house constructed vacuum-bonded laminated main and upper deck floors



The luxurious bedroom suite features a king bed with under-the-bed storage, built-in closet system featuring hanging clothes rod and recessed shelving along with 2 windows for better air flow.



The beautifully redesigned Bighorn interior features 2-tone black and tan maple cabinetry, residential size refrigerator, 3 burner gas cook top with oversized oven, 30" microwave and many more beautifully designed standard features.



New enticing bathroom features a glass shower with foldable teak wood seat and 6'4" ceiling height.

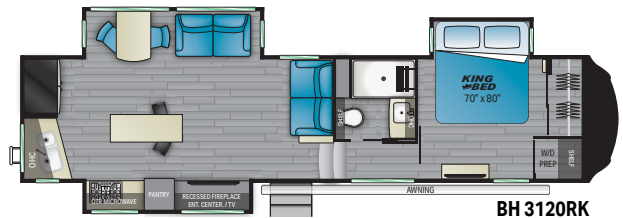


For more information and to take a virtual walk-through, visit www.heartlandrvs.com



BIGHORN

Designed to be the ultimate recreational vehicle, Bighorn offers a variety of floorplan options to fit your family's needs.

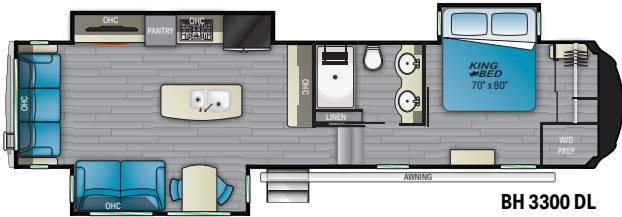


BH 3120RK

Length – 37' 6"
Height – 13' 3"

Dry – 11,972 lbs.
GVWR – 16,500 lbs.

Hitch – 2,141 lbs.

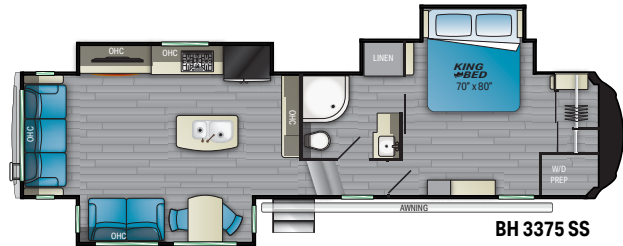


BH 3300 DL

Length – 39' 0"
Height – 13' 3"

Dry – 12,277 lbs.
GVWR – 16,000 lbs.

Hitch – 2,330 lbs.

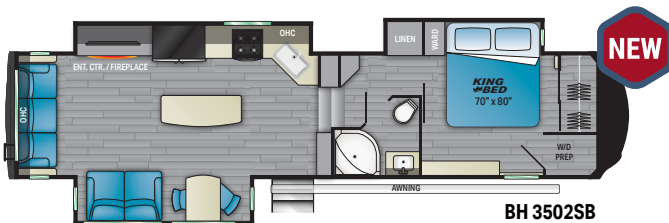


BH 3375 SS

Length – 38' 8"
Height – 13' 3"

Dry – 13,268 lbs.
GVWR – 16,000 lbs.

Hitch – 2,580 lbs.

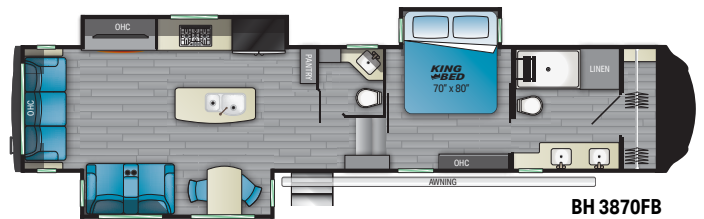


BH 3502SB

Length – 38' 7"
Height – 13' 3"

Dry – 12,840 lbs.
GVWR – 16,500 lbs.

Hitch – 2,585

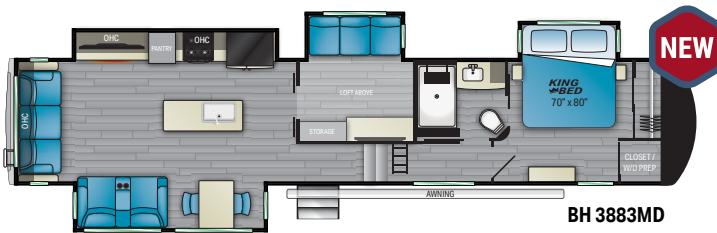


BH 3870FB

Length – 43' 0"
Height – 13' 3"

Dry – 13,955 lbs.
GVWR – 16,500 lbs.

Hitch – 2,885 lbs.

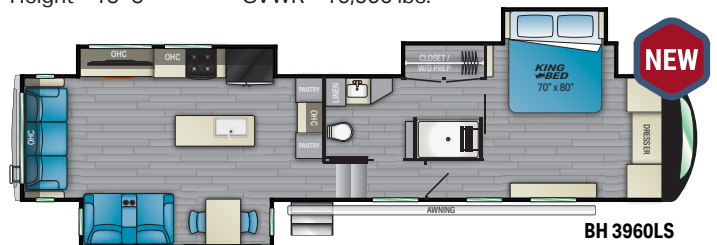


BH 3883MD

Length – TBD
Height – TBD

Dry – TBD.
GVWR – TBD

Hitch – TBD

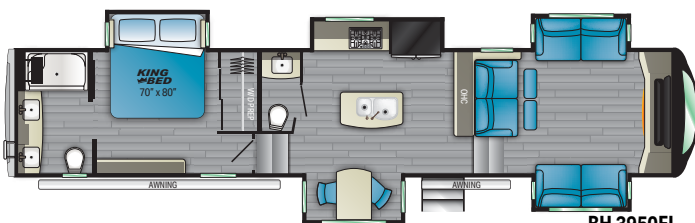


BH 3960LS

Length – 43' 10"
Height – 13' 3"

Dry – 15,212 lbs.
GVWR – 16,500 lbs.

Hitch – 3,020 lbs.

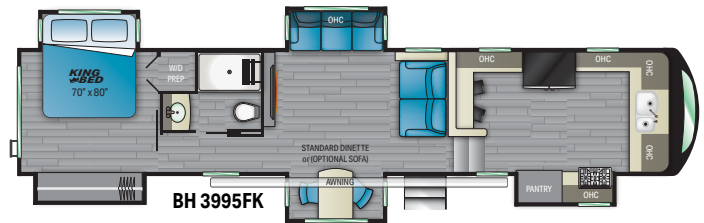


BH 3950FL

Length – 43' 10"
Height – 13' 3"

Dry – 14,238 lbs.
GVWR – 16,500 lbs.

Hitch – 3,675 lbs.



BH 3995FK

Length – 43' 10"
Height – 13' 3"

Dry – 14,141 lbs.
GVWR – 16,500 lbs.

Hitch – 2,907 lbs.

HEARTLAND

WWW.HEARTLANDRV.COM



Product information is as accurate as possible as of the date of publication of this brochure. Due to Heartland's commitment to continuous product improvement, floorplans, materials, components, features, measurements, specifications, options, etc. are subject to change at any time without notice or obligation. In certain conditions some additional equipment may be needed. Photos may show optional equipment or props used for photography purposes only. Heartland has listed the approximate base weight of the trailer without the optional equipment included. Optional equipment will impact the weight of the trailer. Please locate the weight sticker attached to the trailer you are considering for the most accurate trailer weight. Tow Vehicle Caution: Owners of Heartland recreational vehicles are solely responsible for the selection and proper use of tow vehicles. All customers should consult with the motor vehicle manufacturer or their dealer concerning the purchase and use of suitable tow vehicles for Heartland products. Heartland disclaims any liability or damages suffered as a result of the selection, operation, use or misuse of a tow vehicle. Heartland's limited warranty does not cover damage to the recreational vehicle or the tow vehicle as a result of the selection of the tow vehicle. Overall length for a Fifth Wheels is defined as the body length of the trailer excluding hitch meaning bumper to cap. The overall length for a Travel Trailer is defined as the body length of the trailer including hitch, meaning bumper to hitch (pin). It does not include rear ladder or spare tire. Optional pin boxes will affect overall length. 4/20