

# COLUMBUS

EXPLORE THE ULTIMATE FIFTH WHEEL



VISIT [WWW.PALOMINORV.COM](http://WWW.PALOMINORV.COM) FOR ADDITIONAL PHOTOS AND INFORMATION

## CONSTRUCTION

- 101" wide body
- All welded aluminum frame superstructure
- Drop Frame pass-thru storage compartments
- 5/8 tongue-groove plywood floor
- R40 Residential 5" radius Wood Truss Roof
- 6' 6" height slides (living area slides)
- (5) heat ducts out of traffic areas
- Snap-in ceiling molding-no staples or tape
- 12V heat pads on all holding tanks
- R38 floor insulation
- R40 roof insulation
- R11 sidewall insulation
- Mor/Ryde CRE3000 Suspension system
- Vacuum Bonded Walls
- Lippert Axles
- 16" wheels w/nitro fill tires
- Rear View Camera prep
- Slide Topper Prep

## INTERIOR

- Large framed tinted windows throughout
- Hidden hinges
- Soft close constructed reinforced doors & drawers with upgraded hardware

- Upgraded crack/mold/mildew-resistant flooring
- Upgrade true solid surface countertops kitchen only
- LED lights
- Residential crown molding throughout unit
- Solid Wood Slide Fascia
- Roller night shades
- Solid Wood steps
- Large entry closet for jacket & shoe storage

## EXTERIOR

- Slam latches on all storage doors
- Magnetic Compartment Door Holds
- 2-tone aluminum wheels
- 2-tone wheel well skirting
- Painted fiberglass front cap
- Heated utility convenience center
- Black tank flush
- Outside FM/Bluetooth receiver w/ USB port
- Outside shower
- 2-30 lb LP tanks w/auto switch
- Entry door w/window and screen door
- Quick battery disconnect
- Power awning w/LED lighting
- 7000 lb axles (all models)
- Crank down spare tire

- Storage rack in front compartment
- Tire pressure monitoring system
- 2" hitch receiver

## FURNITURE

- Power w/USB charging residential theater seating w/storage
- 50/50 Split Sleeper sofa (per model)
- Solid Wood entertainment & end table tops
- Residential high end dining chairs w/ storage

## BEDROOM

- 13.5 Coleman Serenity bedroom A/C
- 32" TV Backer and hookups
- Solid Wood dresser top
- Pillow top mattress
- Mirrored sliding closet doors
- High end bedspread & pillows
- Reading Lights with USB Charger
- CPAP Shelves

## APPLIANCES

- Insignia 3 burner gas cooktop
- Insignia 22" Residential oven
- 50" LED TV w/Sound Bar and DVD player

- 10 gallon water heater w/quick recovery
- Washer / dryer prep
- Full system water purifier
- 20 cu. ft residential refrigerator w/1,000W Inverter
- 30" residential microwave
- 15,000 BTU Coleman Serenity A/C
- 35,000 BTU furnace
- Omnidirectional rooftop antenna with 4G LTE/Wifi Prep
- 50 AMP Converter w/ built-in charge wizard

## KITCHEN

- Pull out pantry
- Storage for sink covers (some models)
- Sink covers
- Residential under counter storage
- Residential backsplash
- Additional lighting above sink area
- Large single bowl stainless steel sink
- Single lever faucet w/pull out sprayer
- Trash can w/ dedicated storage (some models)

## BATHROOM

- 60" x 30" one-piece fiberglass shower with seat and built-in shelves for toiletries

- Pressed top counter top
- 3 speed power vent
- Porcelain toilet
- Shower Skylight

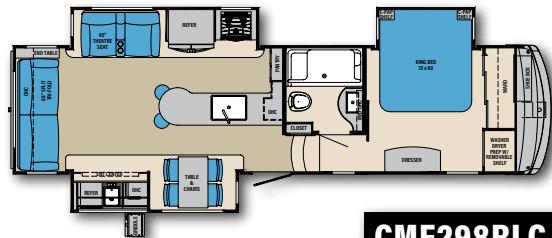
## OPTIONS

- Stackable washer / dryer
- Dual pane windows
- 18 cu ft gas electric refrigerator
- Generator prep
- 5/5 generator install (includes gen prep)
- 17.5" Goodyear H rated tires w/upgraded rims
- Compass Package (Forced Option) includes:** 6 Point Hydraulic Leveling System, Tire Pressure Monitoring System, Quietcool Serenity A/C System w/15K BTU main, 13.5 BTU 2nd, 2" Hitch Receiver, 20 Cu. Ft. Residential Refrigerator, 50" Entertainment TV w/2 Ext Speakers, 2-tone Aluminum Wheels, G-rated Tires, 12V Heat Pads on All Tanks, Kitchen Maxx Air Vent w/Rain Hood, Electric Fireplace, Metal Wrapped Awning, Residential Dinette Chairs(2), Battery Disconnect, LED Awning Lights, Syphon 360 Vent Covers, MCD Night Shades, Mor/Ryde Strut Assist Step Above Entry Step, Friction Hinge Entry Door w/Euro Handle, Go Power Solar Prep, Pull Down Faucet, Ladder, King Bed, Hybrid Carpet, 2 Folding Chairs

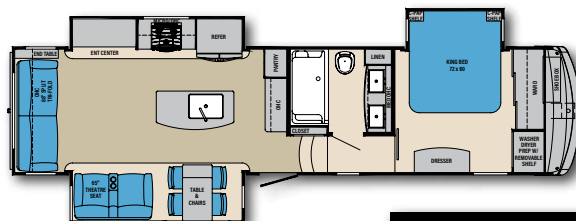
SPECIFICATIONS	CMF298RLC	CMF329DVC	CMF366RLC	CMF378MBC	CMF382FBC	CMF383FBC	CMF388FKC	CMF389FLC
<b>HITCH WEIGHT</b>	2,239	2,086	1,779	2,184	2,533	2,417	2,380	2,769
<b>UVW</b>	11,268	11,457	11,540	12,999	13,080	12,257	13,341	13,140
<b>GVWR</b>	14,268	14,457	14,540	15,997	16,050	15,557	16,380	16,138
<b>CCC</b>	3,000	3,000	3,000	2,998	2,970	3,300	3,039	2,998
<b>OVERALL LENGTH</b>	35' 5"	37' 6"	38' 9"	41' 2"	41' 2"	41' 2"	41' 2"	41' 2"
<b>EXT. HEIGHT (w/o 2nd AC)</b>	13' 6"	13' 6"	13' 6"	13' 6"	13' 6"	13' 6"	13' 6"	13' 6"
<b>EXT. WIDTH</b>	101"	101"	101"	101"	101"	101"	101"	101"
<b>FRESH WATER (gal.)</b>	75 gal	75 gal	75 gal	75 gal	75 gal	75 gal	75 gal	75 gal
<b>GREY WATER (gal.)</b>	78 gal	71 gal	71 gal	71 gal	78 gal	78 gal	75 gal	75 gal
<b>BLACK WATER (gal.)</b>	39 gal	39 gal	39 gal	39 gal	39 gal	78gal	39 gal	39 gal
<b>AWNING SIZE</b>	16' & 10'	17' & 10'	18' & 11'	20' & 10'	12'-9" & 11'	12'-9" & 11'	18'-6"	20'



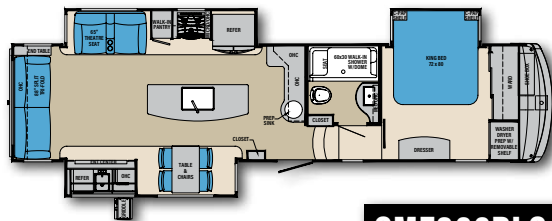
# COLUMBUS



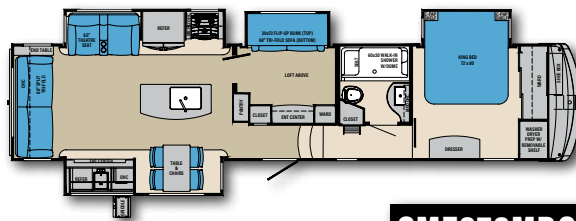
**CMF298RLC**



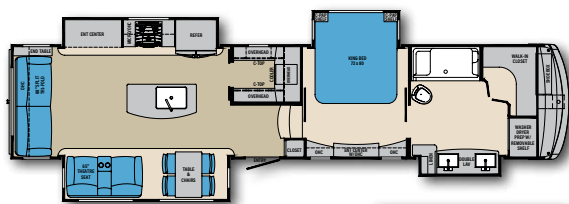
**CMF329DVC**



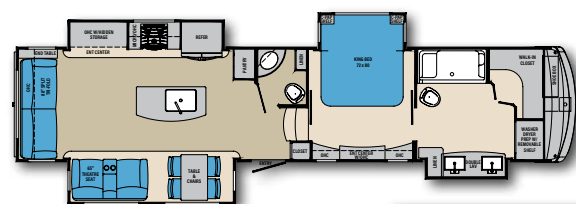
**CMF366RLC**



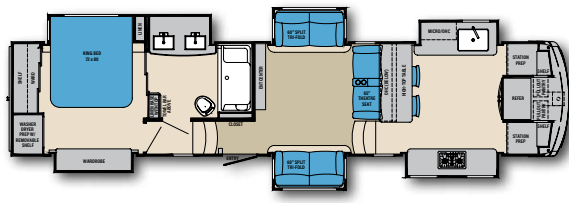
**CMF378MBC**



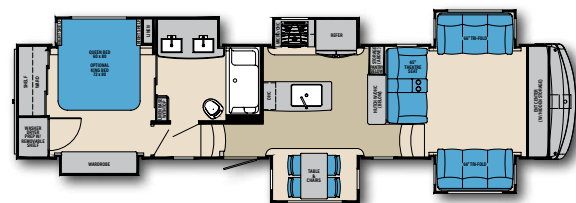
**CMF382FBC**



**CMF383FBC**



**CMF388FKC**



**CMF389FLC**





**24/7 EMERGENCY  
ROADSIDE ASSISTANCE  
WITH VEHICLE PURCHASE**

TOWING JUMP-STARTS TIRE CHANGES FLUID DELIVERY LOCKOUT SERVICE	WINCH-OUT MOBILE MECHANIC TECHNICAL SUPPORT DEALER LOCATOR SERVICES
---	--

**SAFERIDER RV  
MOTOR CLUB**

\*VALID FOR 1 YEAR FROM DATE OF PURCHASE



### PRE-DELIVERY INSPECTION

20,000 square feet of quality assurance. The bare essentials for a premium product. This state-of-the-art facility gives immediate daily feedback to production for quality assurance in every unit built.



Learn More  
Scan this barcode using  
a QR Reader on your  
smart phone to learn  
more about Forest River.



A Berkshire Hathaway company.

All information contained in this brochure is believed to be accurate at the time of publication. However, during the model year, it may be necessary to make revisions and Forest River, Inc., reserves the right to make all such changes without notice, including prices, colors, materials, equipment and specifications as well as the addition of new models and the discontinuance of models shown in this brochure. Therefore, please consult with your Forest River, Inc., dealer and confirm the existence of any materials, design or specifications that are material to your purchase decision. ©2019 Palomino RV, a Division of Forest River, Inc., a Berkshire Hathaway Company. 10/19 Columbus

**FREE MEMBERSHIP**  
to Forest River Owners' Group

[www.forestriverfrog.com](http://www.forestriverfrog.com)

COLUMBUS CARE



# PALOMINO

COLUMBUS BY PALOMINO  
A Division Of Forest River, Inc.  
105-1/2 C.R. 14 • Middlebury, In 46540  
[www.palominorv.com](http://www.palominorv.com)



[www.ForestRiverBuyLocal.com](http://www.ForestRiverBuyLocal.com)

### PALOMINO OWNER "DIGITAL KIT" APP

Now you can have your Owner's Manual with you wherever you are. Download our FREE App from the App Store or Google Play and you'll have the information right at your fingertips.



YOUR PALOMINO DEALER: